

State of Texas

Counties of Borden and Dawson,

Corrected field notes of a
survey of the West line

of Borden County and the East line Dawson County, made by virtue of an order of the Court of Borden County ~~and~~ passed at the regular Feb. Term of said court on the 11 day of Feb, 1908, and an order of the County Court of Dawson County on May 18, 1908, concurring with Borden County for the purpose of establishing the West boundary line of Borden County and the East boundary line of Dawson County.

We, the undersigned surveyors met on the 18 day of May 1908, at the N.W. corner of Borden County ~~is~~ the same being the N.E. corner of Dawson County as established by W.S. McClung, Special Surveyor for County Boundary of Borden County Texas.

Said N.W. corner of Borden Co. being the N.E. corner of Dawson County is a stone 2 ft, X 2ft, X 4 inches placed in a pit level with the surface of the ground, across the face of said stone two straight lines are cut N. S; E.W. and intersecting at right angles at the center of stone. The N. half of stone is mkd. LYNN, 5/18/08. The ~~S.E.~~^{NW.} quarter is mkd, [^]COR.B.C. The S.W. quarter is mkd N.E. CO.D.C. Six inches S. of said corner a stone is set 10"X 5"X 2 ft, mkd 30. B.C.

A stone 14"X14"X6", mkd on S. face D.C.N.L. brs W. 50 vrs.

A stone 14"X14"X6" mkd on S face N.L.B.C. brs E. 50 vrs.

The Wood's old corner being a set stone mkd on E face N.W.B.C.

On W face D.C. brs N. 37 44'W. 484.8 vrs A wind mill brs N. 12 49'W. A wind mill brs N. 42 E. The N.E. corner of survey No. 59. E.L.R.R.R.R. Co, Blk, No, 8, is 919.4 vrs E. and 100.5 vrs May 19th, 1908. Magnetic Declination, 11 20'E.

1 1st Mile { Thence S thru open prairie, at 100 vrs pass a set stone
 10"x 6"x2ft, Mks on E face W.L.B.C. On W face E.L.D.C. at 1800.8
 vrs cross the S^{line} survey No, 59. at 919¹.4 vrs W. of its S.E. corner
 1900.8 vrs set a stone mkd on E. face W.L.B.C. 1,M. On W face
 E.L.D.C. 1,M. From which a wind mill brs N. 80 20'W. A wind mill
 brs S. 8 25'W.

2nd Mile { Thence S. thru open Prairie at 1900.8 vrs set a stone mkd
 On E face W.L.B.C. 2,M. On W face E.L.D.C. 2,M. From which
 A wind mill brs S. 34 18'W. a wind mill S. 1 14'W.

3rd Mile { Thence S. thru open prairie at 1900.8 vrs set a stone mkd
 on E face W.L.B.C. 3,M. On W face E.L.D.C. 3,M. From which
 a wind mill brs N. 85 32'W. A wind mill E 19 12'W.

4th Mile { Thence S. thru open prairie, 626 vrs cross the N. line of
 survey No, 6, Blk, No, 32, E.L.R.R.R.R. Tsp, 6 N. 541 vrs N.
 76 8'E. of its N.W. corner. 1900.8 vrs set a stone mkd on E face
 W.L.B.C. 4,M. On W face E.L.D.C., 4, M. from which a wind
 mill S. 16 15'E. Flue on E end of house brs S. 16 W.

5th Mile { Thence S. thru open prairie at 467.8 vrs cross the N. line
 of survey No, 7, Blk, No, 32, Tsp, 6, N. E.L.R.R.R.R. Co, 71 vrs
 N. 76 8'E. of its N.W. corner At 312.8 vrs cross the W. line
 of survey No, 7, 294.8 vrs S. 13 52'E. of its N.W. corner
 The S.E. corner of survey No, 12, Blk, No, 1, J. poitevent, brs S.
 13 52'E. 1606 vrs At 1900.8 vrs set a stone mkd on the E face
 W.L.B.C. 5,M. On W face E.L.D.C. 5,M. From whcih flue on house
 brs S. 55 30'W. Flue on house brs S. 39 32'E.

6th Mile { Thence S. thru open prairie 428 vrs cross the S. line of
 survey No, 12, Blk, No, J. poit event, 398.8 vrs S. 76 8'W. ~~Thn~~ of its
 S.E. corner. 1900.8 vrs set a stone mkd on E face W.L.B.C. 6,M.
 On W face E.L.D.C. 6,M. From which flue on house brs N. 88 24'E.
 Flue W end of house brs N. 30 48'W.

**CORRECTED MAP OF THE WEST BOUNDARY
LINE OF BORDEN COUNTY AND EAST
BOUNDARY LINE OF DAWSON COUNTY.**

SCALE - 1000 Yds to the inch -



BORDEN COUNTY

The State of Texas: We, the undersigned surveyors do hereby certify that the foregoing map is a correct and true copy of the boundary line between Borden and Dawson Counties, as surveyed by us on the ground, and that said map shows the correct location of the various land surveys there made at various times in accordance with the conditions and terms of same. Given under our hands this 21 day of Jan. 1909.
W. S. McClary, Surveyor for Borden County, Texas
R. W. B. Clark, Surveyor for Dawson County, Texas

The State of Texas }
County of Dawson } J. W. Henderson, Clerk
of the County Court of Dawson County, Texas do hereby certify that the foregoing map is a true and correct copy of the original now on file in my office. Given under my hand and the seal of said court at my office in Kansas State this 14 day of April, 1909.
J. W. Henderson, Clerk

[Faint handwritten notes and signatures in the bottom left corner.]

Borden Co Bdru Line 5.
See also Map K-7-49a,b,f

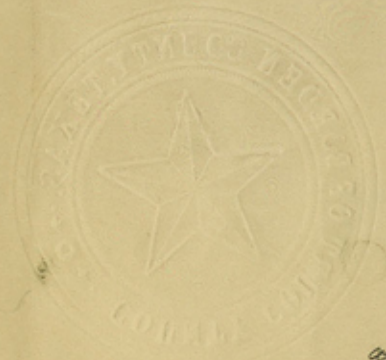
County Clerk, Borden County, Texas

[Handwritten signature]

the 11th day of February, 1908.

Given under my hand and seal of office this
the 11th day of February, 1908, at the County Clerk's
office in the City of Borden, Texas.

County of Borden,
State of Texas,
I, J. S. [Name], County Clerk



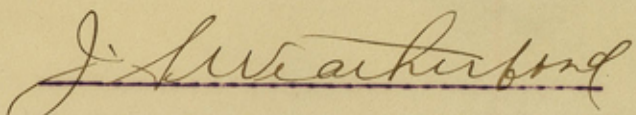
county50667

State Of Texas,
County of Borden.

I, J.S. Weatherford, County Clerk
in and for Borden County Texas,

do hereby certify that the foregoing field notes are a true
and correct copy of the one now on file in the Office of
the County Clerk of the state and county aforesaid.

Given under my hand and seal of office this
the 11, day of February, 1909.


County Clerk, Borden County Texas



28th Mile { Thence S. at 1227.6 vrs cross the S line of survey No, 43,
 { Blk, No, 33, Tsp 4, N. the same being the N. line of No, 6, Blk,
 { No, 33, Tsp 3, N. The S.W. corner of said survey No, 43, brs S.
 { 74 28' W. 656.2 vrs At 1900.8 vrs set a stone m&d on E face W.L.B.C.
 { 28, M. On W face E.L.D.C. 28, M. From which Wind mill brs N.
 { 33 10' W. Wind mill brs S. 44 28' E.

29th Mile { Thence S. at 1295.5 vrs cross the N. line of survey No, 7,
 { Blk, No, 33, Tsp 3, N. 119 vrs N. 76 17' E. from its N.W. corner.
 { 1732.6 vrs cross the W. line said survey No, 7, 425.3 vrs S.
 { 15 48' E. from its N.W. corner. At 1900.8 vrs set a stone m&d
 { on E face W.L.B.C. 29, M. On W face E.L.D.C. 29, M. From which wind-
 { mill brs S. 3 35' W. Wind mill brs N. 72 30' W.

+ Thence S. at 1551.2 vrs cross the N. line of survey No,
 13, Blk, No, 34, Tsp, 3, N. 473 vrs S. 74 12' W. from its
 + N.E. corner. At 1900.8 vrs ~~xx~~
 + to the N.W. corner of Howard Co, The same being the S.W. corner of
 Borden County. as established by T.H. Seay Special Surveyor for
 County Boundary for Howard Co, and W.S. McClung Special Surveyor
 for Co boundary for Borden Co, in April, 1908 A.D.

For the description of this corner, see the field notes ^{of} the S. line
 of *Borden* Co. and the N. line of Howard Co. 30th Mile stone.

Resurvey finished Jan 3rd, 1909. ~~xxxxxxxx~~
 J. A. Orr,)
) Chain Carriers
 Z. Robinson,)
 D. B. Tucker,)
) Rodmen.
 Morris Lane)

We, the undersigned surveyors, do hereby certify that the foregoing survey was made by us on the ground according to law and that the limits, boundaries and corners with the marks, natural and artificial are truly and correctly described and set forth in the foregoing field notes just as we found them on the ground.

Witness our hands this the 3rd day of Jan. 1909 A.D.
W. S. McClung (Special surveyor for county Boundary, Borden Co, Texas.
Byron Barnes (Special Surveyor for County Boundary Dawson Co, Texas.

Thence S. thru Mes Flat, crossing crk. At 859. cross the
 (W. line of survey No, 9. Blk, No, 33, Tsp, 4, N. 1695 vrs S.
 15 43'E. from its N.W. corner and 95. N. 15 43'W. from its S.W.
 22nd + corner. 967.8 vrs cross the N. line of survey No, 17, Blk No, 33,
 Mile Tsp, 4, N. 27 vrs S. 74 30'W. from its N.E. corner. AT 1900.8
 vrs set a stone mkd on E face W.L.B.C. 22, M. On W face E.L.D.C.
 22, M. From which clump of brush on point brs S. 30 E Clump
 of brush on point brs S. 18 18'W.

Thence S. 995.8 vrs cross the N line of survey No, 20. 559
 23rd + vrs S. 74 30'W. from its N.E corner. At 1450 vrs cross the Col-
 Mile crado River, At 1900.8 vrs set a stone mkd on E face W.L.B.C. 23,
 M On W face E.L.D.C. 23, M. From which brush on point brs
 S. 88 30'E. Brush on hill brs S 17 E.

Thence S. ascending hill and crossing several short draws
 (At 1021.6 vrs cross the S. line of survey No, 20, 820.5 vrs N.
 24th + 74 30'E. from its S.W. corner. At 1900.8 vrs set a stone mkd on
 Mile E face W.L.B.C. 24, M. On W face E.L.D.C. 24, M. From which
 Mes, 4" Dia Mkd X brs S. 41 W. 83.4 vrs

Thence S. crossing a hill. At 1044.8 vrs cross the N. line of
 survey No, 29, Blk, 33, Tsp 4, N. 300 vrs N. 74 30'E. from its
 25th + N.W. corner. At 1900.8 vrs set a stone mkd on E face W.L.B.C. 25, M.
 Mile On W face E.L.D.C. 25, M. From which wind mill brs S. 76 W.
 + Po int of bluff brs N. 20 W.

Thence S. at 254.2 vrs cross the W line of survey No, 32,
 1069.6 vrs S. 15 41'E. from its N.W. corner The S.W. corner of x
 26th + said survey No, 32, brs S. 15 41'E. 787 vrs At 1071.5 vrs cross
 Mile the N. line of survey No, 42, 221. vrs S. 74 20'W. from its N.E.
 corner. 1900.8 vrs set a stone mkd on E face W.L.B.C. 26, M.
 On W face E.L.D.C. 26, M. From which Double Mes, 5" Dia Mkd X brs
 N. 22 30'W. 13.3 vrs Add 5" Dia Mkd X brs N. 32 30'W. 14 vrs.

Thence S. 1149.8 vrs cross the N. line of survey No, 43,
 1173 vrs N. 74 20'E from its N.W. corner. At 1900.8 vrs set a stone
 27th + mkd on E face W.L.B.C. 27, M. On W face E.L.D.C. 27, M. From which
 Mile wind mill brs S. 10 14'W. Wind mill brs S. 44 15'E.

Sand

17th Mile Thence S. crossing ^{Sand} Crk, At 871 vrs Cross the N. line of survey No, 34, Blk, No, 33, Tsp, 5, N. 395 vrs N. 75 35'E. of its N.W. corner. ascend slope and passing thru field. At 1900.8 vrs set a stone mkd on E face W.L.B.C.17,M. On W face E.L.D.C.17,M. From which point of bluff brs S. 11 45'W. Point of bluff brs S. 28 40'W.

18th Mile Thence S. cross point of bluff . At 778 vrs cross the W. line of survey No, 34, Blk 1740 vrs S. 12 38'E. from its N.W. corner . The S.W. corner of said survey, No, 34, brs S. 12 38'E. 1136 vrs At 894.5 vrs cross the N. line of survey No, 40, Blk, No, 33, Tsp, 5, N. 25 vrs S. 75 28'W. of its N.E. corner. At 1900.8 vrs set a stone mkd on E face W.L.B.C.18,M. On W face E.L.D.C.18,M. From which point of bluff brs N. 2 13'W. Point of bluff brs S 2 14'E.

19th Mile Thence S. Ascend ^{Bluff} of Plains . At 924 vrs cross the N. line of survey No, 45, Blk, No, 33, Tsp, 5, N. 432.3 vrs S. 75 ^{0.5} 2'W from its N.W. corner. At 1900.8 vrs set a stone mkd on E face W.L.B.C.19,M. On W face E.L.D.C.19,M. From which point of bluff brs S. 84 30'E. Point of bluff brs S. 49 40'E.

20th Mile Thence S. 940 vrs cross the S boundary line of survey No 45, Blk, No, 33, Tsp, 5, N. the same being the N. boundary of survey No, 4, Blk, No, 33, Tsp, 4, N. The One-Half-Corner on said S. line on survey No, 45, brs S. 75 15'W. 95 vrs. The S.W. corner of said 45, the same being the N.W. corner of survey No, 4, Tsp, 4, N. brs S. 75 15'W. 1054 vrs . The S.E. corner of said survey No, 45, the same being the N.E. corner of said survey No, 4. Tsp 4, N. brs N. 2 75 15'E. 855 vrs. At 1900.8 vrs set a stone mkd on E face W.L. B.C.20,M. On W face E.L.D.C.20,M. From which a cedar on a point of a hill brs S 12 4'E. Point of hill brs s. 22 W.

21st Mile Thence S. at 989.4 vrs cross the S line of survey No, 4. Blk No, 33, Tsp, 4, N. 403 vrs N. 74 30'E from its S.W. corner. At 1900.8 vrs set a stone mkd On E face W.L.B.C.21,M. On W face E.L.D.C.21,M. From which Mes 3" Dia Mkd X brs S. 10.2 vrs. Mes 4" Dia Mkd X brs S. 16 30'W, 16.8 vrs.

Thence S. at 787 vrs cross the N. boundary line of the
 (T & P Ry. Co's 80 Mile Reservation, the same being the S. boundary
 (line of survey No, 47, Blk, No, 1, J. Poitevent, and the N. boundary
 12th (line of survey No, 2, Blk, No, 33, T & P Ry. Co. Tsp, 5, N. from said
 Mile. (point the N.W. corner of said survey No, 2, brs S. 76 8' W. 589 vrs
 (At 1900.8 vrs set a stone mkd on E face W.L.B.C. 12, M. On W face
 (E.L.D.C. 12, M. From which point of bluff brs N. 86 20' E. Point of
 (bluff brs N. 31 30' E.

Thence S. over hill. At 798 vrs cross the N. line of survey
 (No, 11, Blk, No, 33, Tsp, 5, N. 133 vrs N. 76 1' E. from which N.W.
 (corner. At 1572 vrs cross the W. line of said survey at a point 752
 (vrs S. 12 38' E from its N.W. corner. The S.W. corner of said
 + 13th (survey No, 11, brs S. 12 38' E. 1088.9 vrs At 1900.8 vrs set
 Mile (a stone mkd on E face W.L.B.C. 13, M. On W face E.L.D.C. 13, M.
 (From which point of bluff brs S. 20 11' W. Point of bluff brs S.
 (37 33' W.

Thence S. at 60 vrs cross creek known as Tobacco Crk to
 (settlers and known as Colorado River in the field notes of
 (T & P Ry. Co Surveys. Passing over hill. At 813.5 vrs cross
 14th (the N. line of survey No, 15, Blk, 33, Tsp, 5N. 245 vrs S. 75 54' W.
 Mile (from its N.E. corner. At 1900.8 vrs set a stone mkd on E face
 (W.L.B.C. 14, M. On W face E.L.D.C. 14, M. From which DeCordova
 (Peak brs S. 87 30' E. Red top house brs N. 63 5' E. This stone is
 (set on the side of a hill.

Thence S. at 830.3 vrs cross the N. line of survey No, 32,
 (Blk, No, 33, Tsp, 5, N. 66 vrs S. 75 48' W., from its N.E. corner
 (At 1900.8 vrs set a stone mkd on E face W.L.B.C. 15, M. On W face
 15th (E.L.D.C. 15, M. From which W. point of red top house brs N. 37 21' E
 Mile (DeCordova Peak brs S. 86 20' E.

Thence S. at 848.3 vrs cross the N. line of survey
 (No, 27, Blk, No, 33, Tsp, 5N. 815.3 vrs N. 75 41' E. from its N.W.
 16th (corner. At 1900.8 vrs set a stone mkd on E face W.L.B.C. 16, M.
 Mile (On W face E.L.D.C. 16, M. From which DeCordova Pk, brs S. 89 30' E.
 (Red top house brs N. 32 3' E.

Thence S.

7th Mile { Thence S. at 488.8 vrs cross the S. line of survey No, 13, Blk, No,1.J.Poitevent, 1033 vrs N. 76 8'E. of its S.W. corner at 1900.8 vrs set a stone Mkd on E face W.L.B.C.7,M. On W face E.L.D.C.7,M. From which ^o point of bluff brs S. 3 30'E. New house Brs S. 55 30'E. Said stone is near breaks of canyon.

8th Mile { Thence S. descending hill into Indian Canyon at 538.8 vrs cross the S. line of survey No, 24, Blk, No,1. J.Poitevent,~~x254x2~~ 564 vrs N.76 8'E. of its S.W. corner, At 1900.8 vrs set a stone mkd on E face W.L.B.C. 8,M. On W face E.L.D.C.8,M. From which a clump of trees on hill brs S. 31 50'E. Rock on hill brs S. 25 40'E..

9th Mile { Thence S. at 164 vrs ~~x~~ enter Indian Canyon Tank . At 595 vrs cross the S. line of survey No, 25, Blk,No, 1. J. Poitevent. 95vrs N.76 8'E. of its S.W. corner . At 991.8 vrs cross W. line of survey, No, 36, same block. 385 vrs. S. 13 25'E. of its N.W. corner. The S.E. ~~corner~~ of said survey 36, brs S. 13 52'E. 1515 vrs. At 1900.8 vrs set a stone mkd on E face W.L.B.C. 9,M. On W face E.L.D.C.9,M. From which rock on point brs, N. 83 E. Mes.3" Dia, Mkd X brs N.55 20'E 3.8 vrs

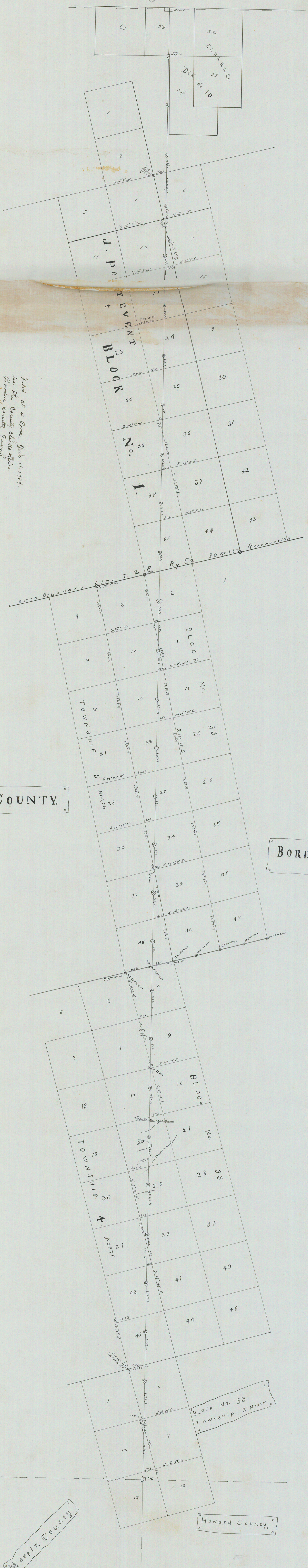
10th Mile { Thence S. crossing HKBRY Draw . At 652.8 vrs cross the S. line of survey No,35,J.Poitevent. 366.5 vrs S.76 8'W. of its S.E. corner. 1900.8 vrs set a stone mkd on E face W.L.B.C.10,M. On W face E.L.D.C.10,M. From whcihh rocy point brs S. 74 22'E. Rock on side of hill brs N.17 22'E.

11th Mile { Thence S. at 710.8 vrs cross the N. line of survey No,47, Blk,No,1.J.Poitevent, 842 vrs S.76 8'W. from its N.E. corner At 1900.8 vrs ~~x~~ set a stone mkd on E face W.L.B.C.11,M. On W face E.L.D.C.11,M. From which rock on bluff brs N.87 5'E. Rock on bluff brs N. 56 32'E.

CORRECTED MAP OF THE WEST BOUNDARY LINE OF BORDEN COUNTY AND EAST BOUNDARY LINE OF DAWSON COUNTY

Scale: - 1000 yds. to the inch.

Lynn County



I hereby certify that this map is a true and correct copy of the map of the West boundary of Borden County and East boundary of Dawson County as shown on the original map of the County Clerk of Borden County, Texas, and as shown on the original map of the County Clerk of Dawson County, Texas, and as shown on the original map of the County Clerk of Lynn County, Texas, and as shown on the original map of the County Clerk of Ryan County, Texas, and as shown on the original map of the County Clerk of Howard County, Texas.

Filed at 4 P.M., July 11, 1909.
 in the County Clerk's Office
 Borden County, Texas
 J. W. McArthur
 County Clerk

Approved at 4 P.M., July 11, 1909
 W. H. B. [Signature]
 County Clerk
 Dawson County, Texas

DAWSON COUNTY

BORDEN C

Martin County

Howard County

The State of Texas
 Counties of Borden
 and Dawson

we the undersigned surveyors, do hereby certify that the map of the West boundary of Borden County and East boundary of Dawson County as shown on the original map of the County Clerk of Borden County, Texas, and as shown on the original map of the County Clerk of Dawson County, Texas, and as shown on the original map of the County Clerk of Lynn County, Texas, and as shown on the original map of the County Clerk of Ryan County, Texas, and as shown on the original map of the County Clerk of Howard County, Texas, is a true and correct copy of the original map.

Given under our hands this 11th day of July, 1909.

W. H. B. [Signature] Special Surveyor for
 Borden County, Texas
 J. W. McArthur Special Surveyor for
 Dawson County, Texas