

BRAZORIA - FORT BEND  
COUNTY BOUNDARY LINE



BASCOM GILES  
COMMISSIONER  
GENERAL LAND OFFICE  
AUSTIN, TEXAS

1. Field notes from the N.E. corner of Francis Bingham League to the N.E. corner of Fort Bend County and the N.W. corner of Brazoria County, which is also a corner of Harris County. Photostatic copy field notes, plat and decree. Surveyed July 28th to August 2nd, 1913, by Rice and Atkinson.
2. Photostatic copy of Field Notes from San Bernard River to Cow Creek and the Brazos River. Surveyed by Hedick & Munson, March and July, 1932. Approved by Commissioners Court of Ft. Bend & Brazoria Counties Dec. 10, 1934
3. Original field notes of above bearing signatures of surveyors and members of Commissioners Court.
4. Certified plat by Hedick and Munson.

NOTE: See Brazoria County Rolled Sk. #35 for original tracing by Hedick & Munson, Fort Bend and Brazoria Boundary Line, surveyed March & July, 1932

county 50704

2

Field Notes

Of the County Line of Brazoria and Fort Bend Counties from the North East corner of the Francis Bingham League to the North East corner of Fort Bend County and the North West corner of Brazoria County which is also a corner of Harris County.

Beginning at a concrete monument in the North East corner of the Francis Bingham League which is in the middle of a drainage ditch and is East from the North West corner of the said Bingham League on the Bank of the Brazos River 9867 varas, and is West of the South East corner of the William Pettus League 1437 varas as established on the ground.

Thence N14°05"E at 1900 varas set concrete monument, and at 2760 varas cross the North line of the William Pettus League.

And at 3802 varas set concrete monument for mile two.

At 5127 varas cross the North line of the William Hall League and at 5702 varas set concrete monument for mile three.

At 7477 varas cross the G. C. & S. F. R. R. and at 7603 varas set concrete monument for mile four, and at 7742 varas cross the south line of the A. B. Langerman survey.

At 9504 varas set concrete monument for mile five and at 11405 varas set concrete monument for mile six.

At 11579 varas cross the North line of the A. B. Langerman survey

At 13306 varas set concrete monument for mile seven.

At 13540 cross the North line of the Chas Heywood survey.

At 15206 varas set concrete monument for mile eight.

At 17107 varas set concrete monument for mile Nine.

At 17591 varas cross the South line of the S. G. Haynie survey.

At 19028 varas to cut stone monument the common corner of Fort Bend Brazoria and Harris Counties.

Recorded in Vol. E, page 304.

County Surveyor *Rand Brown* County Surveyor of Brazoria County Texas.  
County Clerk - Aug 12/1913.

*E. S. Calkins*  
County Surveyor

*Clifton Rice*  
County Surveyor of Ft. Bend County Texas.

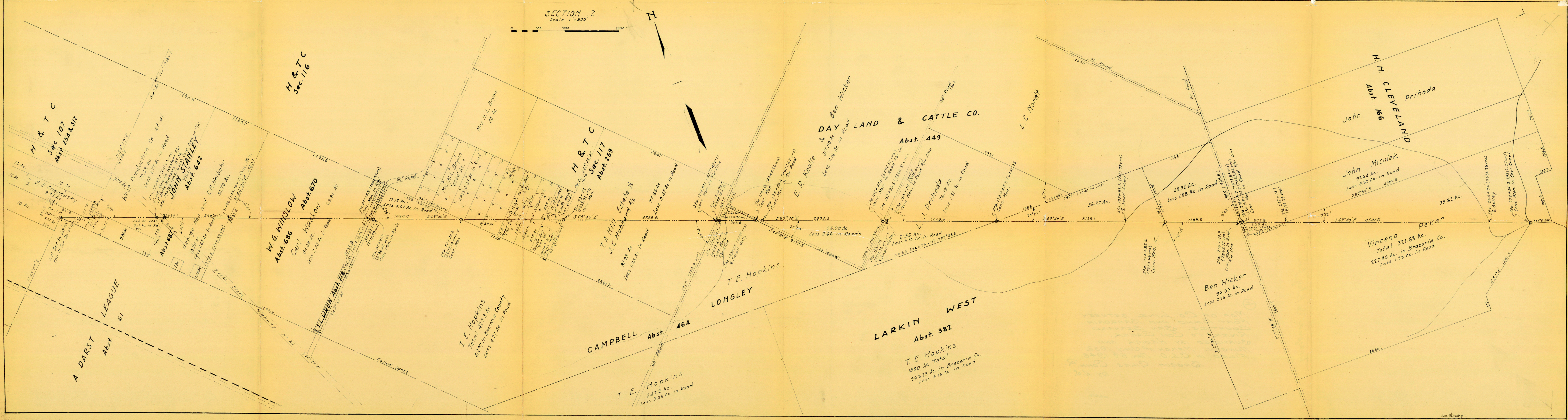
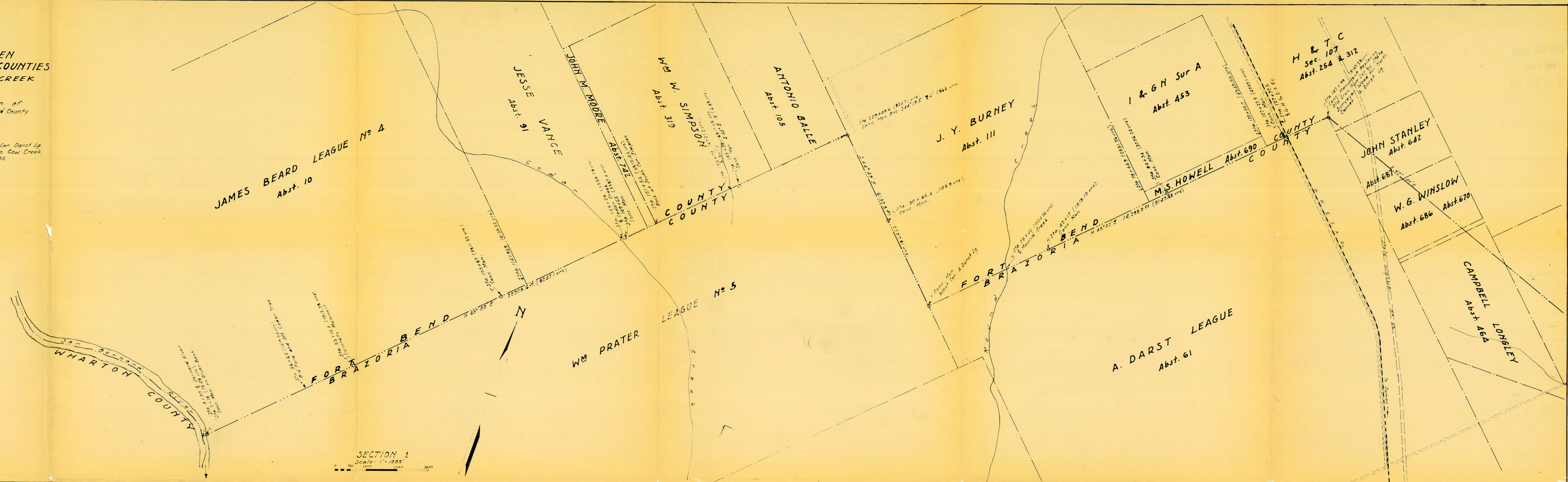
17028  
17107  
1921

A

MAP SHOWING  
 COUNTY LINE BETWEEN  
 FORT BEND & BRAZORIA COUNTIES  
 SAN BERNARD RIVER TO COW CREEK  
 In Two Sections

Surveyed Under the Joint Supervision of  
 Bert Hedrick, County Surveyor of Fort Bend County  
 and H. W. Munson, County Surveyor of  
 Brazoria County, March and July 1932

Scales:  
 Section 1: 1" = 1000' Bernard River to North Car Darst Lg.  
 Section 2: 1" = 500' North Car Darst Lg. to Cow Creek  
 Plotted July 1934 - Traced Dec 1934



THE STATE OF TEXAS  
COUNTY OF BRAZORIA

I, H R STEVENS JR Clerk of the County Court and ex-officio Clerk of the Commissioners' Court in and for Brazoria County Texas do hereby certify that the attached PLAT of the BOUNDARY LINE BETWEEN FORT BEND AND BRAZORIA COUNTIES is a true and correct copy of the Original Plat as same was accepted at the December 10th 1934 Regular Term of the Commissioners' Court and filed in the Office of the County Clerk on December 13th 1934

GIVEN UNDER MY HAND AND SEAL OF OFFICE this the 4th day of March A D 1948

H R STEVENS JR CLERK COUNTY COURT  
AND EX-OFFICIO CLERK OF THE COMMISSIONERS COURT BRAZORIA CO TEXAS  
BY *Alice Sanders* DEPUTY

RECEIVED

MAR 5 1948

GENERAL LAND OFFICE

Brazoria Co. Bdry line 2

3

Portion of boundary line between Fort Bend and Brazoria Counties, between San Bernard River and Cow Creek. Surveyed by Hedick & Munson March and July, 1932. Filed in G.L.O. March 5, 1948.

BASCOM GILES, COMMISSIONER

by W.S. F.L. C.K.

counter 58729

Examined and approved this 10th day of December, 1934.

Commissoner Court of  
Fort Bend County, Texas,

J. M. Moore Jr.  
County Judge

J. M. Kovar  
Commissioner Prec. No. 1

Ed. Stern  
Commissioner Prec. No. 2

G. Wirt  
Commissioner Prec. No. 3

Perry A. Rosenman  
Commissioner Prec. No. 4

Commissioners Court of  
Brazoria County, Texas,

J. L. Loggins  
County Judge

Neal Sivens  
Commissioner Prec. No. 1

E. H. Mays  
Commissioner Prec. No. 2

C. W. Massey  
Commissioner Prec. No. 3

L. L. Hunsell  
Commissioner Prec. No. 4

GENERAL FUND OFFICE

APR 2 1938

F4

counter 50728

(8177.29 varas) cross the division line between John Miculek and Vince Pekar tracts of land at a distance of 792.6 feet (285.34 varas) Easterly from the Northwest corner of the said Pekar tract; At 26476 feet (9531.36 varas) cross the center line of last above mentioned small gully; At 27256.3 feet (9812.27 varas) a concrete monument at the head of the South Prong of Cow Creek at the confluence of two of its branches, and which point is approximately at the head of the timber on said Creek.

The map herewith attached and forming a part of this report shows the acreage in each County of the several tracts cut by the County Line and also shows in detail the location of the concrete monuments marking the County Line.

Respectfully Submitted,

*Bert Hedick*

County Surveyor, Fort Bend  
County, Texas.

*H. W. Munson*

County Surveyor, Brazoria  
County, Texas.

We, Bert Hedick, County Surveyor of Fort Bend County, Texas, and H. W. Munson, County Surveyor of Brazoria County, Texas, do hereby certify that the foregoing report is true and correct according to a survey made by us on the ground and according to law; that the limits, boundaries and corners, with the marks, natural and artificial, are truly and correctly described and set forth in the foregoing Field Notes and attached Plat, just as we found them on the ground.

Witness our hand this 6<sup>th</sup> day of December, 1934.

*Bert Hedick*

County Surveyor, Fort Bend  
County, Texas.

*H. W. Munson*

County Surveyor, Brazoria  
County, Texas.

F<sup>3</sup>

*Brazoria Co. Copy*

monument set in fence line along the center line of said H. & T. C. R. R. Co. Section No. 117 at a distance of 771 feet (277.56 varas) Northeastly from fence corner on the Northeastly line of the C. Longley survey; At 12159.7 feet (4377.49 varas) pass concrete monument set in fence line on the Northwest right of way line of a county road; At 12192.2 feet (4389.19 varas) cross center line of said county road and division line between H. & T. C. R.R. Co. Section No. 117 and the C. Longley survey at a distance of 1960 feet (705.6 varas) Northeastly from the South corner of said Section No. 117; At 12224.7 feet (4400.89 varas) pass concrete monument set in fence line on the Southeast right of way line of said county road; At 12325 feet (4437 varas) cross the center line of a small gully; At 12901 feet (4644.36 varas) pass a concrete monument set in fence line on the Southwest side of a county road and the division line between the C. Longley and Day Land & Cattle Co. surveys at a distance of 645 feet (232.2 varas) from the West corner of said Day Land & Cattle Co. survey and a North corner of the C. Longley survey; At 12993.4 feet (4677.62 varas) pass a concrete monument set in fence line on the Northeast right of way line of said county road; At 15262.5 feet (5494.5 varas) pass concrete monument set in fence line on Northwest right of way line of a county road; At 15295.3 feet (5506.31 varas) cross the center line of said road at a distance of 1003.2 feet (362.95 varas) Northeastly from the extreme East corner of the C. Longley survey; At 15326 feet (5517.36 varas) cross the center line of last above mentioned small gully; At 15329 feet (5518.44 varas) pass concrete monument set in fence on the Southeast right of way line of said county road; At 17344.3 feet (6245.95 varas) pass concrete monument set in fence line on the division line between the Day Land & Cattle Co. and the Larkin West surveys at a distance of 2634 feet (924.24 varas) from the extreme East corner of the C. Longley survey and 2591 feet (1040.76 varas) Westly from the Northeast corner of the Larkin West survey as fenced; At 19783.3 feet (7121.99 varas) cross the center line of last above mentioned gully; At 20482.4 feet (7373.66 varas) pass a concrete monument set in fence line on the division line between the Larkin West and the Day Land & Cattle Co. surveys at a distance of 1094.2 feet (393.91 varas) Southerly from fence corner at the Northeast corner of the said Larkin West survey as same is fenced on the ground; At 21240.9 feet (7862.72 varas) pass concrete monument set in fence line on the West right of way line of a county road; At 21371.9 feet (7873.88 varas) cross the center line of said road and the division line between the Day Land & Cattle Co. and H. N. Cleveland surveys at a distance of 289 feet (104.04 varas) Northerly from the Northwest corner of the Vince Pekar tract of land in the H. N. Cleveland survey and 1580 feet (568.8 varas) Southerly from the Northeast corner of the Ben Wicker tract of land in the Day Land & Cattle Co. survey; At 21902.9 feet (7885.04 varas) pass concrete monument set in fence line on the East right of way line of said county road; At 22714.7 feet



Thence South  $44^{\circ} 49'$  East along the Northeast line of the said Prater Survey and the Southwest line of the said Burney Survey as same is partly fenced and appears to be recognized on the ground and following a very old marked line through Grimes point of timber; At 24 feet (8.64 varas) pass last above mentioned concrete monument; At 3066.4 feet (1103.9 varas) pass a concrete monument set in fence line; At 6132.6 feet (2207.61 varas) a concrete monument set for the West corner of the A. Darst league and the South corner of the J. Y. Burney Survey;

Thence North  $45^{\circ} 02'$  East along the Northwest line of the A. Darst league; At 2846 feet (1024.56 varas) cross the center line of Mound Creek; At 4217 feet (1518.12 varas) pass a concrete monument; At 7864.9 feet (2851.56 varas) pass the East corner of the Burney survey and the South corner of the M. S. Howell survey; At 8434 feet (3056.24 varas) pass a concrete monument; At 12055.7 feet (4340.05 varas) pass East corner of the M. S. Howell survey and South corner of H. & T. C. R. R. Co. Section No. 107; At 12722.5 feet (4580.1 varas) pass concrete monument set in the Northeast right of way of a county road which is also the Southwest right of way of the G. H. & S. A. Ry.; At 12772.5 feet (4598.1 varas) cross the center line of the said G. H. & S. A. Ry.; At 14298 feet (5147.28 varas) a concrete monument set for the North corner of the A. Darst league, replacing an old Iron Pipe set by State Surveyor Wood;

Thence South  $69^{\circ} 40'$  East, At 589.9 feet (212.36 varas) cross a fence line being the division line between H. & T. C. R. R. Co. Section No. 107 and the John Stanley survey at a distance of 245.5 feet (87.89 varas) Northeastly from the West corner of said Stanley survey; At 1782.3 feet (641.63 varas) pass concrete monument in Western right of way line of State Highway No. 56; At 1926.3 feet (693.65 varas) pass a concrete monument set in the Eastern right of way line of said State Highway; At 3126 feet (1126.36 varas) pass concrete monument set in fence line on the division line between the John Stanley and W. G. Winslow surveys at a distance of 1274.5 feet (458.82 varas) Northeastly from fence corner at the West corner of the said Winslow survey; At 5702.2 feet (2054.95 varas) pass concrete monument set in fence line on the Northern right of way line of a county road; At 5752.2 feet (2070.79 varas) cross center line of said county road and the division line between the T. L. Wren and Campbell Longley surveys at a distance of 589.7 feet (212.29 varas) Southwestly from the North corner of the said Longley survey; At 5796.2 feet (2086.63 varas) pass concrete monument set in fence line on the Southeast right of way line of said county road; At 7436.6 feet (2677.18 varas) pass concrete monument set in fence line along the Northeast line of the C. Longley survey and the Southwest line of H. & T. C. R. R. Co. Section No. 117 at a distance 1533 feet (551.88 varas) Southeastly from the North corner of the said Longley survey and 951 feet (345.96 varas) Southeastly from the West corner of said Section No. 117; At 9322 feet (3355.92 varas) pass concrete

F

Handwritten notes at the bottom left of the page.

counter 50725

2827

9-171

FINAL REPORT OF A SURVEY OF A PORTION  
 OF THE BOUNDARY LINE BETWEEN  
 FORT BEND AND BRAZORIA  
 COUNTIES.

TO THE HONORABLE COMMISSIONERS COURTS OF  
 FORT BEND AND BRAZORIA COUNTIES, TEXAS :-

We, Bert Hedick, County Surveyor of Fort Bend County, and H. W. Manson, County Surveyor of Brazoria County, Texas, wish to report that we have erected proper concrete monument, marked Fort Bend on one side and Brazoria on the opposite side, along that portion of the County Line between the San Bernard River and the Head of the South Prong of Cow Creek, as outlined in our partial report which was approved by your Honorable Bodies on May 11th., 1932, and we wish to submit the following field notes and map for your final approval.

Beginning at a point in the center line of the San Bernard River at the South corner of the James Beard Survey and the West corner of the Wm. Prater Survey as same is recognised on the ground:

Thence North 45° East along the Southeast line of the said Beard Survey and the Northwest line of the said Prater Survey, following the general course of an old marked line through the timber; At 218 feet (78.48 varas) pass a concrete monument referred to as our beginning point in the foregoing partial report; At 5664 feet (1519.04 varas) pass an old fore and aft Cedar Tree; At 5515.5 feet (1915.56 varas) pass a concrete monument; At 10587 feet (2811.32 varas) pass a concrete monument; At 11495.9 feet (4138.52 varas) pass East corner of the James Beard and South corner of the Jesse Vance Survey as it appears to be recognised on the ground; At 14828 feet (5338.08 varas) cross the center line of Cedar Creek, At 14965 feet (5367.4 varas) pass a concrete monument set on the top bank of Cedar Creek; At 15018 feet (5406.48 varas) beginning of a graded road, this point being 17 feet Southeast of its center line; At 15154 feet (5815.44 varas) pass rock at the South corner of the W. W. Simpson survey; At 18670 feet (6721.2 varas) cross the center line of a gully; At 18938 feet (6817.68 varas) point from which a concrete monument set in Southeast right of way fence line of road bears S. 45° E. 18 feet (6.48 varas); At 22908.6 feet (8247.1 varas) to the North corner of the Wm. Prater survey, in the Southwest line of the J. Y. Barney Survey, from which a concrete monument set 1.1 feet (0.4 vara) Southeast of the Southeast right of way fence line of county road bears S. 44° 49' E. 24 feet (8.64 vrs.);

*Surveyed by Bert Hedick*

counters 50247

F

See Plat accompanying the foregoing instrument on file in this office.  
Filed for record Dec 13 1934 at 9 o'clock A. M. G. C. Davis Clerk County Court,  
Brazoria Co., Texas.

- - - 0 0 0 - - -

THE STATE OF TEXAS )  
COUNTY OF BRAZORIA )

I, H. R. Stevens, Jr., Clerk of the County Court, in  
and for Brazoria County, Texas, do hereby certify that the  
above and foregoing is a true and correct photographic copy

of that certain Partial Report & Final Report of a  
Survey for a portion of the Boundary line between Brazoria  
County, Texas, and the 6th day of Dec 1934, respectively,  
A. D., 1932, as the same appears of record in Volume 257,  
Page 87, of the Deed Records of Brazoria County, Texas .

GIVEN under my hand and seal of office at Angleton ,  
Texas, this 4th day of March, A. D. 1948.

H. R. Stevens, Jr., Clerk County Court,  
in and for Brazoria County, Texas.

By Leice Sanders Deputy.

Brazoria Co. Bdry ln 2



RECEIVED

MAR 5 1948

GENERAL LAND OFFICE

②

BRAZORIA - FORT <sup>BEND</sup> CO. BND BY  
LINE. SURVEYED BY  
HEDICH AND MUNSON, MARCH  
AND JULY 1932.  
FILED IN G.L.O. MAR. 5th 1948  
BASCOM GILES COMM  
W.S. FL CK.

127-B

corner of the Larkin West survey as fenced; At 19783.3 feet (7121.99 varas) cross the center line of last above mentioned gully; At 20482.4 feet (7373.66 varas) pass a concrete monument set in fence line on the division line between the Larkin West and the Day Land & Cattle Co. surveys at a distance of 1094.2 feet (393.91 varas) Southerly from fence corner at the Northeast corner of the said Larkin West survey as same is fenced on the ground; At 21840.9 feet (7862.72 varas) pass concrete monument set in fence line on the West right of way line of a county road; At 21871.9 feet (7873.88 varas) cross the center line of said road and the division line between the Day Land & Cattle Co. and H. N. Cleveland surveys at a distance of 289 feet (104.04 varas) Northerly from the Northwest corner of the Vince Pekar tract of land in the H. N. Cleveland survey and 1580 feet (568.8 varas) Southerly from the Northeast corner of the Ben Wicker tract of land in the Day Land & Cattle Co. survey; At 21902.9 feet (7885.04 varas) pass concrete monument set in fence line on the East right of way line of said county road; At 22714.7 feet (8177.29 varas) cross the division line between John Miculek and Vince Pekar tracts of land at a distance of 792.6 feet (285.34 varas) Easterly from the Northwest corner of the said Pekar tract; At 26476 feet (9531.36 varas) cross the center line of last above mentioned small gully; At 27256.3 feet (9812.27 varas) a concrete monument at the head of the South Prong of Cow Creek at the confluence of two of its branches, and which point is approximately at the head of the timber on said Creek.

The map herewith attached and forming a part of this report shows the acreage in each County of the several tracts cut by the County Line and also shows in detail the location of the concrete monuments marking the County Line.

Respectfully Submitted

Bert Hedick  
County Surveyor, Fort Bend County, Texas.

H. W. Munson  
County Surveyor, Brazoria County, Texas.

WE, Bert Hedick, County Surveyor of Fort Bend County, Texas, and H. W. Munson, County Surveyor of Brazoria County, Texas, do hereby certify that the foregoing report is true and correct according to a survey made by us on the ground and according to law; that the limits, boundaries and corners, with the marks, natural and artificial, are truly and correctly described and set forth in the foregoing Field Notes and attached Plat, just as we found them on the ground.

WITNESS our hand this 6th day of December, 1934.

Bert Hedick  
County Surveyor, Fort Bend County, Texas.

H. W. Munson  
County Surveyor, Brazoria County, Texas.

Examined and approved this 10th day of December, 1934.

COMMISSIONER COURT OF  
FORT BEND COUNTY, TEXAS.

COMMISSIONERS COURT OF  
BRAZORIA COUNTY, TEXAS.

Jno. M. Moore Jr.  
County Judge

J. T. Loggins  
County Judge

J. M. Kovar  
Commissioner Prec. No. 1

Neal Giesecke  
Commissioner Prec. No. 1

Ed. Stern  
Commissioner Prec. No. 2

E. H. Mays  
Commissioner Prec. No. 2.

J. G. Wirtz  
Commissioner Prec. No. 3

C. W. Massey  
Commissioner Prec. No. 3

Perry A. Poorman  
Commissioner Prec. No. 4

C. C. Hampil  
Commissioner Prec. No. 4

feet (4580.1 varas) pass concrete monument set in the Northeast right of way of a county road which is also the Southwest right of way of the G. H. & S. A. Ry.; At 12772.5 feet (4598.1 varas) cross the center line of the said G. H. & S. A. Ry.; At 14298 feet (5147.28 varas) a concrete monument set for the North corner of the A. Darst league, replacing an old Iron Pipe set by State Surveyor Weed:

Thence South 69° 40' East, At 589.9 feet (212.36 varas) cross a fence line being the division line between H. & T. C. R. R. Co. Section <sup>No.</sup> 107 and the John Stanley survey at a distance of 243.3 feet (87.59 varas) Northeasterly from the West corner of said Stanley survey; At 1782.3 feet (641.63 varas) pass concrete monument in Western right of way line of State Highway No. 36; At 1926.8 feet (693.65 varas) pass a concrete monument set in the Eastern right of way line of said State Highway; At 3126 feet (1125.36 varas) pass concrete monument set in fence line on the division line between the John Stanley and W. G. Winslow surveys at a distance of 1274.5 feet (458.82 varas) Northeasterly from fence corner at the West corner of the said Winslow survey; At 5708.2 feet (2054.95 varas) pass concrete monument set in fence line on the Northern right of way line of a county road; At 5752.2 feet (2070.79 varas) cross center line of said county road and the division line between the T. L. Wren and Campbell Longley surveys at a distance of 689.7 feet (248.29 varas) Southwesterly from the North corner of the said Longley survey; At 5796.2 feet (2086.63 varas) pass concrete monument set in fence line on the Southeast right of way line of said county road; At 7436.6 feet (2677.18 varas) pass concrete monument set in fence line along the Northeast line of the C. Longley survey and the Southwest line of H. & T. C. R. R. Co. Section No. 117 at a distance 1533 feet (551.88 varas) Southeasterly from the North corner of the said Longley survey and 961 feet (345.96 varas) Southeasterly from the West corner of said Section No. 117; At 9322 feet (3355.92 varas) pass concrete monument set in fence line along the center line of said H. & T. C. R. R. Co. Section No. 117 at a distance of 771 feet (277.56 varas) Northeasterly from fence corner on the Northeasterly line of the C. Longley survey; At 12159.7 feet (4377.49 varas) pass concrete monument set in fence line on the Northwest right of way line of a county road; At 12192.2 feet (4389.19 varas) cross center line of said county road and division line between H. & T. C. R. R. Co. Section No. 117 and the C. Longley Survey at a distance of 1960 feet (705.6 varas) Northeasterly from the South corner of said Section No. 117; At 12224.7 feet (4400.89 varas) pass concrete monument set in fence line on the Southeast right of way line of said county road; At 12325 feet (4437 varas) cross the center line of a small gully; At 12901 feet (4644.36 varas) pass a concrete monument set in fence line on the Southwest side of a county road and the division line between the C. Longley and Day Land & Cattle Co. surveys at a distance of 645 feet (232.2 varas) from the West corner of said Day Land & Cattle Co. survey and a North corner of the C. Longley survey; At 12993.4 feet (4677.62 varas) pass a concrete monument set in fence line on the Northeast right of way line of said county road; At 15262.5 feet (5494.5 varas) pass concrete monument set in fence line on Northwest right of way line of a county road; At 15295.3 feet (5506.31 varas) cross the center line of said road at a distance of 1008.2 feet (362.95 varas) Northeasterly from the extreme East corner of the C. Longley Survey; At 15326 feet (5517.36 varas) cross the center line of last above mentioned small gully; At 15329 feet (5518.44 varas) pass concrete monument set in fence on the Southeast right of way line of said county road; At 17344.3 feet (6243.95 varas) pass concrete monument set in fence line on the division line between the Day Land & Cattle Co. and the Larkin West surveys at a distance of 2634 feet (984.24 varas) from the extreme East corner of the C. Longley survey and 2891 feet (1040.76 varas) Westerly from the Northeast

FINAL REPORT OF A SURVEY OF A PORTION  
OF THE BOUNDARY LINE BETWEEN  
FORT BEND AND BRAZORIA  
COUNTIES.

TO THE HONORABLE COMMISSIONERS COURTS OF  
FORT BEND AND BRAZORIA COUNTIES, TEXAS :-

We, Bert Hedick, County Surveyor of Fort Bend County, and H. W. Munson, County Surveyor of Brazoria County, Texas, wish to report that we have erected proper concrete monument, marked Fort Bend on one side and Brazoria on the opposite side, along that portion of the County Line between the San Bernard River and the Head of the South Prong of Cow Creek, as outlined in our partial report which was approved by your Honorable Bodies on May 11th, 1932, and we wish to submit the following field notes and map for your final approval.

Beginning at a point in the center line of the San Bernard River at the South corner of the James Beard Survey and the West corner of the Wm. Prater Survey as same is recognized on the ground:

Thence North  $45^{\circ}$  East along the Southeast line of the said Beard Survey and the Northwest line of the said Prater Survey, following the general course of an old marked line through the timber; At 218 feet (78.48 varas) pass a concrete monument referred to as our beginning point in the foregoing partial report; At 3664 feet, (1319.04 varas) pass an old fore and aft Cedar Tree; At 5315.5 feet (1913.53 varas) pass a concrete monument; At 10587 feet (3811.32 varas) pass a concrete monument; At 11495.9 feet (4138.52 varas) pass East corner of the James Beard and South corner of the Jesse Vance Survey as it appears to be recognized on the ground; At 14828 feet (5338.08 varas) cross the center line of Cedar Creek; At 14965 feet (5387.4 varas) pass a concrete monument set on the top bank of Cedar Creek; At 15018 feet (5406.48 varas) beginning of a graded road, this point being 17 feet Southeast of its center line; At 16154 feet (5815.44 varas) pass rock at the South corner of the W. W. Simpson survey; At 18670 feet (6721.2 varas) cross the center line of a gully; At 18938 feet (6817.63 varas) point from which a concrete monument set in Southeast right of way fence line of road bears S.  $45^{\circ}$  E. 18 feet (6.48 varas); At 22908.6 feet (8247.1 varas) to the North corner of the Wm. Prater survey, in the Southwest line of the J. Y. Burney Survey, from which a concrete monument set 1.1 feet (0.4 vara) Southeast of the Southeast right of way fence line of county road bears S.  $44^{\circ} 49'$  E. 24 feet (8.64 vrs.):

Thence South  $44^{\circ} 49'$  East along the Northeast line of the said Prater Survey and the Southwest line of the said Burney Survey as same is partly fenced and appears to be recognized on the ground and following a very old marked line through Grimes point of timber; At 24 feet (8.64 varas) pass last above mentioned concrete monument; At 3066.4 feet (1103.9 varas) pass a concrete monument set in fence line; At 6132.8 feet (2207.81 varas) a concrete monument set for the West corner of the A. Darst League and the South corner of the J. Y. Burney Survey:

Thence North  $45^{\circ} 02'$  East along the Northwest line of the A. Darst League; At 2846 feet (1024.56 varas) cross the center line of Mound Creek; At 4217 feet (1518.12 varas) pass a concrete monument; At 7864.9 feet (2831.36 varas) pass the East corner of the Burney Survey and the South corner of the M. S. Howell survey; At 8434 feet (3036.24 varas) pass a concrete monument; At 12055.7 feet (4340.05 varas) pass East corner of the M. S. Howell Survey and South corner of H. & T. C. R. R. Co. Section No. 107; At 12722.5

of the apparent absence of definite original land marks, it is our belief that it is impossible ever to locate beyond a doubt the original land lines called for by Statute as the County Line. In consequence we recommend that the following line be adopted as the tentative interpretation by both counties:

Beginning at a point in the center line of the San Bernard River at the West corner of the Wm. Prater and the South corner of the Jas. Beard Survey, as same appears to be recognized on the ground, and running thence N. 45° E. along the general course of a marked line through the timber, At 233.6 feet (84.1 vs.) pass point on top of the eastern bank of said River at a point we calculated to be the original West corner of the Prater and South corner of the Beard survey, at 3664 feet (1319.04 vs.) pass an old fore and aft Cedar tree, at 14828 feet (5338.08 vs.) cross the center line of Cedar Creek, at 16154 feet (5815.44 vs.) pass rock at the South corner of the Shipman Survey, and at 22908.6 feet (8247.1 vs.) in all to a point in line with fence on the recognized northeast line of the said Wm. Prater League, said point being 22.9 feet (8.24 vs.) Northwest and 1.8 feet (0.65 vs.) Northeast from the present North corner of a fence;

Thence S. 44° 49' E. along fence line and oldest marked line through Grimes point of timber 6132.8 feet (2207.81 vs.) to a point we considered should be the West corner of the A. Darst survey;

Thence N. 45° 02' E. along the Northwest line of the A. Darst survey as same appears to be recognized on the ground by fences and a small graded road, 14298 feet (5147.28 vs.) to an iron pipe heretofore mentioned as being set by State Surveyor Weed for the North corner of the said Darst Survey;

Thence in a direct line S. 69° 40' E. 27256.3 feet (9812.27 vs.) to a concrete monument at the head of the South prong of Cow Creek at the confluence of two of its branches it being also approximately the head of the timber on said Creek.

We, Bert Hedick, County Surveyor of Fort Bend County, Texas, and H. W. Munson, County Surveyor of Brazoria County, Texas, do hereby certify that the foregoing report is true and correct as compiled from a survey made by us on the ground and according to law; that the limits, boundaries and corners, with the marks, natural and artificial, are truly and correctly described and set forth in the foregoing report just as we found them on the ground.

WITNESS our hands this 11 day of May, 1932.

Bert Hedick  
County Surveyor, Fort Bend County, Texas.

H. W. Munson  
County Surveyor, Brazoria County, Texas.

Examined and approved this 11 day of May, 1932.

COMMISSIONERS COURT OF  
FORT BEND COUNTY, TEXAS.

F. X. Joerger  
County Judge

John A. Yarling  
Commissioner Prec. No. 1

Ed. Stern  
Commissioner Prec. No. 2.

J. G. Wertz  
Commissioner Prec. No. 3.

Perry A. Poorman  
Commissioner Prec. No. 4.

COMMISSIONERS COURT OF  
BRAZORIA COUNTY, TEXAS.

J. T. Loggins  
County Judge

Neal Giesecke  
Commissioner Prec. No. 1.

E. H. Mays  
Commissioner Prec. No. 2.

C. W. Massey  
Commissioner Prec. No. 3.

F. LeRibeus  
Commissioner Prec. No. 4.

(2074 varas). Difference is 375.4 feet (135.1 varas) additional.

These last two figures would indicate that the distance between the lines for the Darst N. W. line as figured from Mound Creek and from the Prater North corner would be 534.5 feet (192.4 varas). It may be readily seen from this that, in the absence of original land marks other than Mound Creek it is impossible to definitely locate the West end of the Northwest line of the Darst.

"Line 3" was run at right angles to the Northeast from "Line 2" at some distance from the present fence line and extended to the present North corner of the Darst League.

This line shows the distance between Waitt and Munson monuments at the North and West corners of the Darst to be 14549.9 feet (5238 varas). This distance when compared with the Darst original call gives a difference of 474.9 feet (171 varas) additional distance and when compared with Borden's correction gives 236 feet (85 varas) additional.

The Darst original notes call for a crossing over Mound Creek at 4100 varas or 11388.8 feet from the Darst North corner. This would make the Darst West corner 2686.1 feet (967 varas) from Mound Creek.

The "very old marked line" though "Grimes point of timber" is 2846 feet (1024.6 varas) from our crossing on Mound Creek. This gives an additional distance of 160 feet (57.6 varas).

The 2" iron pipe at the North corner of the Darst which was heretofore mentioned as having probably been set by Mr. Weed for the Darst corner was proven conclusively by measurements to the trace of two old fences to be his.

This corner is 11451.8 feet (4122.6 varas) from our crossing on Mound Creek which gives 63 feet (22.7 varas) additional distance over the original call. This difference and the last shown come the nearest checking of any figures made. However, since both differences are additional it is evident that there is no connection between them with reference to original calls to Mound Creek.

A suit was brought by E. Vogelsang against B. H. Wisdom for recovery of land in the J. Y. Burney Survey along the Northwest line of the Darst League, and judgment rendered in 1916 in favor of the plaintiff. The result was that the fence line was moved 155.5 feet (56 varas) Southeast where it now stands. Conversation with people living in the vicinity indicate that other similar suits resulted in similar actions along the Darst Northwest line. Thus it would seem that the said line is more or less definitely located by court action.

"Line 4" was run to the Southeast at approximately a right angle from "Line 3" and extended to the present Southeast line of the Darst League. This line shows the distance between Weeds pipe at the North corner and the recognized East corner to be 13865.9 feet (4991.7 varas). This distance compared with the Darst original call shows a 22.9 feet (8 varas) shortage on the ground. However, nothing was found to prove that the recognized East corner and the original are the same.

"Line 5" extended from Weed's pipe at the Darst corner to the Waitt and Munson concrete monument at what J. F. Weed calls the head of the South Prong of Cow Creek in a "Certificate of a Portion of the Fort Bend County Line", on file in the General Land Office.

Our line was run primarily to ascertain the relation between Waitt and Munson's line and a straight line. Their line appears to have hit a branch of the South Prong at a point about a third of the way from the Darst corner to the true head and then to have followed this branch with its meanders.

In view of our findings in the office and field, both real and assumed, and because



In either case it seems clear that our assumption is true that the Beard Surveyor began his survey not at the waters edge but at a point some 200 feet Northeast.

Several marked trees were found in the vicinity of the present Beard East corner, however, none seems to tally exactly with the trees mentioned in the Beard original notes or the aforementioned transaction between McKinstry and Armstrong.

The rock called for as the South corner of the Simpson survey was found; although the Pecan tree which witnessed it was destroyed by lightning about 15 years ago. Our distance from this rock to the center of Cedar Creek checks within one foot the distance given in the notes for the Moore patent, which would indicate that the rock has not been moved since set. The rock set for the Simpson East corner we were unable to find.

The distance between the waters edge and the corner monument set by Waitt and Munson as the Prater North corner is 22700.4 feet (8172.1 varas). This distance less 22694.4 feet (8170 varas), the original call for the Prater N. W. line leaves a difference of 6 feet (2.2 varas) which would indicate that in their County Line survey Waitt and Munson merely started at the waters edge and chained out the distance called for in said Prater notes. Since we have shown rather conclusively that the original call began some 200 feet northeast from the waters edge we believe that Waitt and Munsons monument line on the Prater Northeast line should be abandoned.

The distance between our starting point and the present North fence corner of the Prater League is 22690.6 feet (8168.6 varas) while the original call is 22694.4 feet (8170 varas) which leaves a difference of only 3.8 feet (1.4 varas). Also, the distance between the West bank of Cedar Creek and the present Prater corner is 8091.6 feet (2913 varas) while this distance as called for by original notes is 8111.1 feet (2920 varas) which gives a difference of only 19.5 feet (7.0 varas). This would indicate that the present North corner of the Prater is somewhere very near to the original corner.

"Line 2" is a line run Southeast at approximately right angles from "Line 1" and extending to an intersection with the Northwest line of the McNeil League; thence along said line to the present North corner of the McNeil; thence at right angles to the Southeast to the center of Mound Creek. The following are the findings along "Line 2".

The distance between the Waitt and Munson monument at the Prater North corner and the one at the Darst West corner is 6135.37 feet (2208.7 varas), while original notes call for 5761.1 feet (2074 varas); the difference being 374.27 feet (134.7 varas).

In his resurvey in 1890 Weed found the Darst common line with the Prater to be 789 varas instead of 867 varas as called for in original notes. This would increase the above difference by 216.6 feet (78 varas) to make it 590.87 feet (212.7 varas).

The original notes for the McNeil League call for the Northeast line to cross Mound Creek at 200 varas from the North corner. Now the present Northeast line crosses very nearly at right angles with said creek which makes sharp bends at 89 feet to the West and 75 feet to the East to very nearly parallel said line. This leads us to believe that the present line crosses in the immediate location of the original crossing, otherwise the original surveyor would not have referred to the creek, since had he crossed at a short distance to the East or West of the present crossing his reference would have been very indefinite as far as future identification was concerned.

The distance between the present Northwest line of the Darst and our crossing on Mound Creek is 3123 feet (1124.3 varas) while from original calls it should be 2963.9 feet (1067 varas). Difference is 159.1 feet (57.3 varas) additional distance.

The distance between the North corner of the Prater and the present Northwest line of the Darst is 6136.5 feet (2209.1 varas), while original calls give it as 5761.1 feet

that the ground West of Cedar Creek, was too wet to permit travel in a car, we hired a team and wagon from Chas. Armstrong for use on that part of the line.

A search was made at the river for the original witness trees for the Beard South corner, but they could not be found. There was evidence of an old Sycamore stump which had been burned off close to the ground and which was in such a position that it might have been the sycamore called for in the Beard notes. Mr. Armstrong said that he had been told that this was the stump of an old bearing tree, however no marks were in evidence since the stump had been burned off too low.

Our start was made on the Waitt and Munson monument which stands on the second bank, or bluff bank, of the River and 193 feet (69.5 varas) from the waters edge. We took this point as our beginning point because it seemed hardly logical that the old colony surveyor would have taken the trouble to start at the waters edge in view of equipment, conditions and land values common to that day and time.

A random line was then run in a Northeasterly direction to a point past the East corner of the A. Balle Survey, and all salient features recorded. The following are the findings on this line which we call "Line 1" for the sake of convenience.

A number of marked trees were found extending from the starting point to a point northeast of the South corner of the Vance Survey. These trees are all marked with 3 hacks on the side facing the line and are said by Mr. Armstrong to have been marked earlier than he can remember, he has lived on the place all of his 58 years. At the time these trees were marked the line was evidently run with a Compass or a transit using a magnetic needle to indicate the direction and, as is the case with most needle lines, it is not straight. In some instances the marked trees are several feet off of the line.

The present fence line between the Beard and Prater Leagues was set about 40 years ago and, like most fences through timber, is none too straight. A portion of this fence is supposed to be on the line but it does not follow the marked line and in most cases it is a few feet Northwest of the correct line.

The present East corner of the Beard League was found to be 11470.9 feet (4129.5 varas) from the waters edge at the River and 11277.9 feet (4060 varas) from our starting as against 11305.5 feet (4070 varas) called for in the original grant. This gives an increased length on the ground by 165.4 feet (59.5 varas) if the water's edge is considered and a lesser length by 27.6 feet (9.9 varas) if our starting point is considered. The distance we found between this corner and the center of Cedar Creek is 3332.1 feet (1199.6 varas) as against 3277.7 feet (1180 varas) given in Prater original notes. This leaves a difference of 54.4 feet (19.6 varas) which is also an additional distance on the ground. The distance between our starting point and the center of Cedar Creek is 14610 feet (5259.6 varas) as against 14583 feet (5250 varas) by original calls which gives an additional distance on the ground of 27 feet (9.6 varas).

A study of these figures indicates that if the original surveyor's measurements were anywhere near as accurate as ours then the original South corner of the Beard is actually about 27 feet (9.6 varas) further Northeast from the waters edge than our starting point is. Also the present East corner of the Beard League is actually about 54 feet (19.6 varas) too near the river.

Now these figures are based on our distances to the center of Cedar Creek; while, as was pointed out in an earlier paragraph, the original call to Cedar Creek in the Prater notes may have referred to the West bank of the creek which was at that time 8 varas or about 22 feet wide. This latter being the case the differences found would be lessened by 11 feet (4 varas).

the original N. W. corner on San Bernard River bears S. 45° W. 8246.7 varas; thence S. 45° E. along the East or back line of said Prater League at 500 varas pass through Grime's point of timber on a very old marked line, recognized as the original back line of said League, at 3013.2 varas an iron pipe set in the North line of P. D. McNeil League for the S. E. corner of said Wm. Prater League".

The I. & G. N. R. R. Co. Survey, the M. S. Howell Scrap Patent, the Jno. Stanley Survey and the W. G. Winslow Survey are all more or less late surveys and all hinge on the resurvey in 1890 by J. F. Weed of Section 107, H. & T. C. R. R. Co. Survey.

In making his resurvey of the H. & T. C. lands Mr. Weed set iron pipes for the corners of Section 107, one of which corners is on what he took to be the North corner of the Darst League. In his description of Section 107 he makes reference to a fence which lay parallel to his lines for the Northwest and Northeast sides of the Darst League. It is entirely possible that at sometime prior to Mr. Weed's survey, this fence was built on the then recognized Darst lines. This however is merely an assumption.

A trip to the Darst North and West corners and the Prater North corner on Tuesday, March 8th revealed further complications. At the North corner of the Darst we found five points, each supposed to be on said corner and none of which is in the present fence corner. These points were; the concrete monument set by Waitt & Munson, a 4 inch iron pipe set by the Sinclair Oil Co., a 2 inch iron pipe about 6 feet high, a cedar stake and a 2 inch iron pipe flush with the ground. The latter is presumed to be the pipe set by Mr. Weed in his resurvey already mentioned. Also we found tracts of two old fences parallel to the Northwest line of the Darst and one parallel to the Northeast line.

At the Darst West corner we found a Waitt and Munson concrete monument and a 4 inch iron pipe set by the Sinclair Oil Co., also several marked trees.

We found what was referred to in a former paragraph as "Grimes point of timber" and identified several marked trees, one of which was marked with an X with one hack above and one below. This mark is typical of the work of Donaldson a former Brazoria County Surveyor. In conversation with Joseph Gritzman a land owner in the Prater League, we were told that this tree was a witness to an iron stake in the Northeast line of the Prater League as located by Wm. R. Stockwell in 1896. It is said the old witness mark as well as line marks on another tree nearby evidently marking the same line, were old when Mr. Stockwell made his survey. Other marked line trees in a point of timber at the Darst West corner appear to coincide with this line. From the apparent age of these marks we take this line to be the one described as a "very old marked line" through "Grime's point of timber" in Lee Chambers notes on his first resurvey of the W. W. Damon Patent.

In the recent building of a graded road along the Northwest line of the Prater League from the North corner to Cedar Creek, the Waitt and Munson markers were taken up and laid on the South fence berm approximately at right angles from their former position.

The present Northeast line of the Prater League lies about 200 feet Southwest from the present East corner of the Balle Survey and about 200 feet Northeast from the monument set by Waitt and Munson.

Traces of an old fenced enclosure, the West corner of which is opposite the Waitt and Munson corner monument indicate the W. W. Damon Patent.

In view of the findings in the office and on the ground, it was decided that a line should be run from the Bernard River to the North corner of the Darst, the better to coordinate the findings and also to check the Prater Northwest line.

Accordingly on Monday, March 14th, this survey was started. On account of the fact

"From the field notes of the surveys made Northwest of said Prater and Burney, it seems clear that said Burney Surveyor did not identify the Darst League corner or line called for at all, but that he did identify the Prater North corner, and ran out said Burney Survey from that point".

"I have found by actual survey that said Burney and the several surveys lying next Northwest of it and said Prater survey all lie together well when held to said Prater corner, but that said Burney cannot be held to its connection with the Darst League without breaking the harmony of the said several surveys in the locality."

"So that in view of such facts, together with the other additional fact that the line of said Darst league as fixed by State Surveyor Weed is certainly not where the Northwest line of that league was supposed for years to be, seems to amply justify me in claiming that the Burney Survey is to be held where it was evidently made on the ground from the North corner of the Prater League, without regard to its call for the Darst corner and line, as they have been lost in late years."

Mr. Waitt's assumptions are reasonable; however, there is one flaw in his line of reasoning. This is that he failed to recognize the Jno. M. Moore patent which was titled about five months before the date on which the application was made for the survey of which his "Explanation" is written. He makes the statement that by actual survey he has found the surveys to the Northwest of the Burney and Prater Surveys all lie well together when held to the Prater corner, when they could not have done so since there existed a vacancy between the Vance and Simpson surveys.

The A. Balle Survey and the German Emigration Co. Survey, both titled in the year 1875, were evidently surveyed on the ground since most corners are more or less definite points. For instance, the Balle calls for North, West, and South corners to be posts, one of which was marked with an X. The East corner of the Balle is called to be the "North corner of Prater League in the S. W. line of the J. Y. Burney Survey", and 965 varas from the Simpson East corner.

A total of calls for the S. E. lines of all surveys along the N. W. line of the Prater with the exception of the Moore patent checks exactly the title length of the Prater line. In other words the Moore patent brings about an excess of 108 varas, which might be be taken to indicate that in 1875 a different point was recognized as the Prater North corner and likewise a different line as the S. W. line of the Burney. This assumption; however, is partly offset by the fact that the Balle surveyor failed to recognize the rock which was set as the East corner of the Simpson, but instead, called for a Mulberry post. It is therefore, possible that a shortage exists in the length of the Balle S. E. line.

It would seem highly improbable that the Burney surveyor, if he, as Mr. Waitt assumes, did start his survey at the Prater North corner, actually identified the original point set by the Prater Surveyor, which was a mound of earth in the prairie. Also, it seems much less probable that Mr. Waitt identified that point.

In 1914 a 61 acre tract lying between the Burney survey and the Prater League was patented to W. W. Damon, the title being issued in Brazoria County. This tract was surveyed twice by Lee Chambers and resurveyed by Ted Atkinson with different findings in all cases. However, this patent was cancelled in 1925 by order of the Court of Civil Appeals at Galveston. This patent has, in view of its cancellation, little or no bearing on our problem except that Lee Chambers, in his first survey gives the following calls that might be helpful;

"Beginning at an iron pipe set for the N. E. corner of Wm. Prater League, from which

counter 50714

length and adjoining the Northeast side of the Jas. Beard League. The North and East corners of the Beard were called to be likewise the South and West corners of the Vance. Again we have mounds of earth called for as the North and East corners of the Vance.

Since the Vance was granted only two years after the Beard, the Surveyor in all probability identified the actual East corner of the Beard as marked. However, in Vol. F, Page 315 of the Fort Bend County Deed Records we find a deed from McKinstry to Armstrong dated 1860 which calls for the Beard East corner to be witnessed by entirely different trees bearing entirely different markings from those called for in original notes. This fact might be taken to indicate that sometime between 1824 and 1860 the original witnesses were destroyed or the markings obliterated.

In 1862, Wm. W. Simpson was patented a tract on the Northeast side of the J. Vance, all four corners being rocks. The rock on the South corner was called to be witnessed by a Pecan tree appropriately marked. This rock was also called to be the East corner of the Vance. However, in 1915, Jno. M. Moore received a patent on a vacancy found between the Vance and Simpson. A study of this vacancy brings out another conflict in notes.

In the Prater original notes we find "Beginning at the N. E. corner of League No. 4 (Beard), thence N. E. 1180 varas a bayou 8 varas wide---" From the manner in which this call is worded it appears probable that the 1180 varas is to the west bank of the Bayou and not the center. The bayou (Cedar Creek) being 8 varas wide, the distance from its center to the Beard East corner would be 1184 varas. This distance deducted from the total length of the Vance S. E. line, 1562 varas; gives 378 varas as the distance from Cedar Creek to the East corner of the Vance. Now if it is assumed that the Prater surveyor intended that his call be taken to the center of Cedar Creek instead of the West bank then the distance from the center of creek to the Vance East corner would be 4 varas more or 382 varas. However in notes for the survey by Clifton Rice upon which the Moore Patent was based he gives the distance from the Beard East corner to the creek to be 1193 varas which would make the distance from the creek to the Vance corner 369 varas, which is at least 9 varas less than the distance figured from the Prater notes. this might reasonably be assumed to indicate that Mr. Rice established his own distance between the Beard corner and the creek by actual survey. Whether he actually identified the original Beard corner is not known, but it is doubtful that he did.

It is clearly evident that while Mr. Rice did not identify the rock called for as the South corner of the Simpson he did identify the marked Pecan tree witnessing it, since his notes on the Moore survey call for a stake at this corner with the same witness called for as the rock had. This stake was evidently found to be 477 varas from the creek which, less Mr. Rices's distance of 369 varas between the creek and the Vance East corner, gives 108 varas between the said Vance corner and the stake, hence the vacancy.

The Jacob Y. Burney Survey was patented in 1841, and again we have mounds called for as the North, West, and East corners while the South corner is called to be the West corner of the Darst where we have heretofore shown there exists a conflict. In this connection another extract from the aforementioned "Explanation" by R. C. Waitt is given below.

"The notes of the J. Y. Burney survey call to begin at the West corner of the Darst League, on the Prater line, but they fail altogether to call for the bearing trees called for in Darst notes at that corner as though the Burney surveyor (N. I. Peck) did not identify said Darst corner by them when making the survey on the ground. He seems not to have known of the conflict the Darst survey makes with the Prater at all, or he would not have called for said corner to be in said line, when it was certainly 500 varas from it.

From the Prater and McNeil original notes it is evident that the S. E. line of the Prater League, which comprises nearly all of the N. W. Line of the McNeil League, was never measured on the ground, but was figured. And while the McNeil title notes state that the line was measured, it is reasonable to assume that it was not, but was taken to agree with the Prater.

Now the length of the N. W. line of the McNeil is given as 8965 varas and the S. E. line of the Prater is given as 8751 varas. The difference is 214 varas. But the original notes for the McNeil call for the excess of the McNeil line over the Prater line to be 114 making a discrepancy of 100 varas, which may or may not have appeared on the ground.

The Abraham Darst League was granted in 1831; the title notes being as follows: "From a corner upon the N. E. boundary of League No. 7, (Robbins) 800 varas to the S. E. of its Northern corner a line was run to the N. E. 4999 varas to a mound of earth out in the prairie and from there to the N. W. 5000 varas to another mound of earth and from there to the S. W. and at 4100 varas crossed the stream Mound Creek 1467 varas farther to a corner upon the N. E. boundary of League No. 5 (Prater) from which an ash marked "P" bears N. 61° W. 1 vara and a Mulberry tree marked "D" bears S. 60° E. 5 varas and from there to the S. E. and following said boundary 867 varas unto the Eastern corner and from there to the N. E. and following the Northwestern boundary of League No. 6 (McNeil) 714 varas to its Northern corner and from there to the S. E. and following the Northeastern boundary to said No. 6, 3333 varas to its Eastern corner and from there to the S. W. 146 varas".

Again the corners called for are mounds of earth with the exception of the west corner which is a stake witnessed by two trees.

Now the line indicated by the call underscored above is the one in which the 100 vara discrepancy has been found. In this case another discrepancy of either 500 or 600 varas is found. In the photostat print of the old English notes on the McNeil League it will be found that the call taken as 114 varas is somewhat confusing and might easily be taken to be 714 varas. This may or may not have been the case with the Darst Surveyor.

However, in this connection an excerpt from an explanation made by R.C. Waitt of a survey he made in 1916 in this locality, Vol. F, Page 318, Fort Bend County Surveyor's Records, is given below:

"The Abram Darst League appears to have been surveyed and titled in the year 1831, about seven years after the river leagues were; and it was evidently surveyed by some surveyor who did not know the position of the back line and corners of the Prater league with relation to the back line and North corner of the McNeil; as said Darst League was laid in conflict with said Prater League about 500 varas and was titled in conflict."

"Sometime soon after said Darst League was titled the said conflict was discovered, and surveyor Borden undertook to correct the survey out of such conflict. The Northwest line of said Darst League was shortened so as to stop 500 varas short of the original West corner and so the line from such terminus would intersect the McNeil upper line 214 instead of 714 varas from the corner. He then increased the lengths of the S. E. and said N. W. lines to take in as much land additional as he had abandoned in the conflict. But no action was taken by the owners of said Darst League to carry such correction into effect by correcting the title notes accordingly, and they were left standing in conflict as first written till now."

To further confuse matters we find that State Surveyor James F. Weed in 1890 found this same distance to be 326 varas.

In 1826 Jesse Vance was granted a tract 1562 varas wide and extending the whole

50712

witnesses given in the field notes accompanying these original grants and patents, and subsequent transactions.

An introductory study of the original grants and patents follows:

The Jas. Beard League, the Wm. Prater League and the Pleasants D. McNeil League were all Austin's Colony Leagues and were granted in the year 1824. From old English field notes received from the General Land Office it is seen that the Beard was the first surveyed, the Prater second and the McNeil third.

The South and East corners of the Beard should have been easily identified at one time each having been witnessed by trees bearing distinctive marks; and the Southeast line, with which we are concerned, was evidently measured on the ground.

The survey of the Prater, being the second in line, was started at the East corner of the Beard and run out toward the prairie; a distance being given between the said Beard East corner and Cedar Creek. The North and East corners of this League were posts set in mounds in the prairie which would be more or less hard to identify at best. There being no witness trees at either corner it would be next to impossible to identify these corners a hundred years after they were set. However the reference to Cedar Creek does give a fairly definite point to work from. It would seem logical also that lines that were run through timber would be marked and there is timber on the Prater Northwest line from the River to Cedar Creek.

The following conflict in notes is found in the records on the McNeil League:

The following note, taken from a photostat print of the old English field notes on the Prater League is self explanatory: "The length of this line (the Prater Southeast line) is taken agreeable to the plat, owing to its not being measured all the way on account it was so thickety near the prairie. I had to make and offset of 4000 varas before I could possible get through. About 4000 varas of this line not blazed on account of its being such a thicket, it was impossible to go through. It is blazed and cut from the creek to the thicket and also from the prairie. A part of this line may truly be called rattan warp with green briar filler and so well wove that it turned me very much out of my way". The length of this line is given as 8751 varas.

The original surveyor's notes on the McNeil league as taken from photostat print are as follows: "Beginning at the N. E. Corner League No. 5 (Prater); Thence N. E. at 114 varas set a post for the Northwest corner League No. 6 (McNeil), from which an elm 14" in diameter bears S. 85° W. 19 varas; thence S. E. at 200 varas a dry slough with some timber on it, running North and South, at 2250 varas an island of timber, at 2500 varas left the island, at 3333 varas set a post and raised a mound for the N. E. corner. Prairie on this line first rate; thence S. W. at 1310 varas enter timber, at 2430 varas a creek running N. E. & S. W., at 6880 varas intersected the San Bernard and cornered on a Live Oak 12 inches in diameter, marked on the S. E. side 7EB and on the N. W. side 6EB from which a Live Oak 14 inches in diameter bears N. 51° E. 8 varas, blazed and notched; land on this line mostly 1st rate timber, Oak, Elm, and U.G., Vines, Briars, etc."

The title notes for the McNeil as taken from Brazoria County Records are as follows:

"The surveyor began at the lower corner of League No. 5 belonging to Wm. Prater; thence he measured 8965 varas to the N. E. where a land mark was planted at a distance of 19 varas from an Elm 14 inches in diameter S. 85° W.; thence S. E. 3333 varas where another land mark was planted in the prairie; thence S. W. 6880 varas to the San Bernardo River, Live Oak marked 7EB on one side, 6EB on the other side and 8 varas from another Live Oak N. 51° E. marked with an axe; thence along the meanders of said creek upward to the place of beginning".

D/127

- - - 0 0 0 - - -

7288

PARTIAL REPORT OF A SURVEY OF A PORTION  
OF THE BOUNDARY LINE BETWEEN  
FORT BEND AND BRAZORIA  
COUNTIES.

TO THE HONORABLE COMMISSIONERS COURTS OF FORT BEND AND BRAZORIA COUNTIES, TEXAS:-

We, Bert Hedick, County Engineer and duly appointed County Surveyor of Fort Bend County, Texas, and H. W. Munson, County Surveyor of Brazoria County, Texas, appointed by your Honorable Bodies to survey and properly mark on the ground certain portions of the division line between said two counties, wish to submit this partial report on that part of the County Line between the San Bernard River and the Head of the South Prong of Cow Creek for your approval before going to the expense of constructing proper markers on the ground.

On Monday March 7th, 1932 we met at Mr. Munson's office in Angleton to go over data compiled in the respective offices, consisting of all data available on original grants and patents adjacent to the county line between the San Bernard River and the North corner of the Abraham Darst League; all data available in Fort Bend County on subsequent ownership in these grants and patents, and sketches showing all original calls, corners, and

counter 50710



FILED IN C. P. O. BOOK 244 1248  
1212 BY CLERK AND H. H. HARRISON  
RECORDED ONLY 584 TO END 585  
BONNORRY FIVE  
ONE DNEB - FORT BEND CO

THE STATE OF TEXAS  
COUNTY OF BRAZORIA

I, H R STEVENS JR Clerk of the County Court and Ex-officio  
Clerk of the Commissioners' Court in and for Brazoria County  
Texas do hereby certify that the above and foregoing is a  
true and correct copy of the Report Plat and Decree of a  
Survey of a Portion of the County Line between Ft Bend and  
Brazoria Counties as same was approved at the October 13th  
1913 Regular Term of the Commissioners Court and recorded  
in Volume L page 32 et seq of the Minutes of the Commissioners'  
Court of Brazoria County, Texas

GIVEN UNDER MY HAND AND SEAL OF OFFICE this the 4th day of  
March A D 1948

H R STEVENS JR CLERK COUNTY COURT  
AND EX OFFICIO CLERK OF THE COMMISSIONERS COURT BRAZORIA CO TEXAS

BY *Alice Sanders* DEPUTY

RECEIVED TOWN OFFICE

MAR 2 1948

RECEIVED

REC'D

MAR 5 1948  
GENERAL LAND OFFICE

counter 50708



HARRIS COUNTY,

COUNTY LINE

Common Corner of Fort Bend  
Harris & Brazoria Counties

S. G. Harnie  
Area in Fort Bend 125 1/2 A.

Clear Creek

Concrete Monument Mile 9.  
H.T. & B.R.R. Co.  
No. 93  
Area in Fort Bend 208 1/2 A.  
Area in Brazoria 438 1/2 A.

A. B. Langerman  
S.M. Swenson  
Manual Escalera

Concrete Monument Mile 8.  
R. B. Lyle 1184  
Area in Fort Bend Co. 45 1/2 A.  
Area in Brazoria Co. 598 1/2 A.

Thos. Gibson  
Chas. Heywood  
Area 548 1/2 A.

Concrete Monument Mile 7.  
J.S. Talmage 1182  
Area in Fort Bend Co. 118 1/2 A.

Concrete Monument Mile 6.  
H.T. & B.R.R. Co.  
No. 17

Manual Escalera  
A.C.H. & B. No. 1

Concrete Monument Mile 5.  
H.T. & B.R.R. Co.  
No. 89  
Area in Fort Bend Co. 123 1/2 A.  
Area in Brazoria Co. 427 1/2 A.

Concrete Monument Mile 4.  
I & G. N. R. R. Co.  
Area in Fort Bend Co. 589 1/2 A.  
Area in Brazoria Co. 650 1/2 A.

Concrete Monument Mile 3.  
J.S. Talmage  
No. 68

Concrete Monument Mile 2.  
W.H. Dennis 58

Concrete Monument Mile 1.  
A.B. Langerman 1184

BRAZOS RIVER

David Fitzgerald League.

William Hall League.

William Pattus League.

Francis Bingham League.

FORT BEND COUNTY,

BRAZORIA COUNTY,

SKETCH SHOWING THE COUNTY LINE BETWEEN FORT BEND & BRAZORIA COUNTIES FROM THE N.E. Corner of the Francis Bingham League TO THE COMMON CORNER OF HARRIS FORT BEND & BRAZORIA COUNTIES

Scale 1 inch = 1000 Acres. Variation 9° East - July 28<sup>th</sup> & August 28<sup>th</sup> 1913

We do hereby certify this map to correctly show the location of said line as determined by actual survey, made by us on the ground, in the months of July & August 1913.

Ed. J. [Signature]  
County Surveyor Fort Bend County.  
Ed. [Signature]  
County Surveyor Brazoria County.

1770 17

Order of (Get Report & Plan)

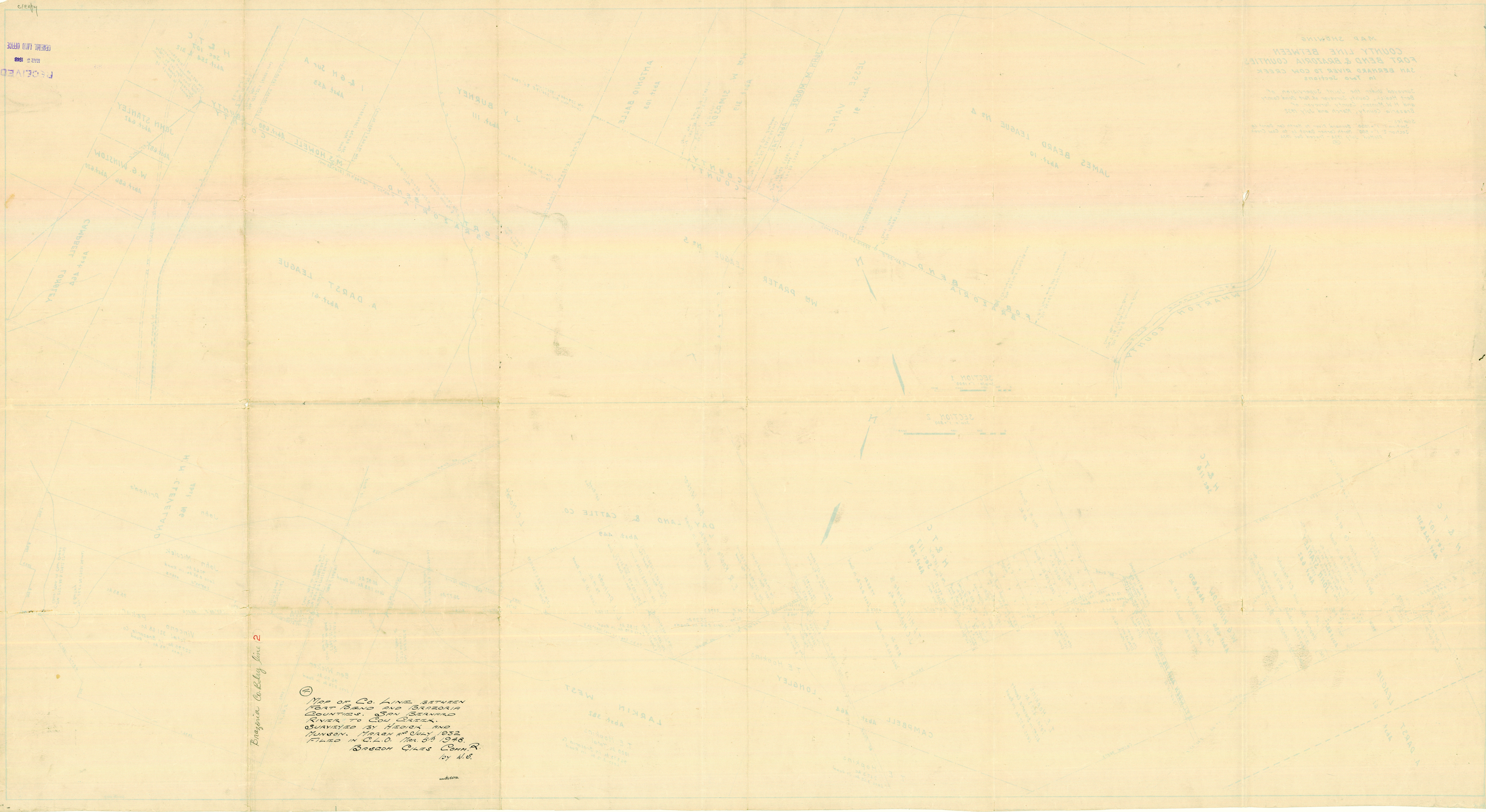
13

On the 19th day of October 1913 came on  
to be heard the report of Clifton Rice  
County Surveyor of Fort Bend County  
and E. S. Atkinson Jr. County Sur-  
veyor of Brazoria <sup>COXNEY</sup> both heretofore  
ordered by the Commissioners  
Court of their respective Counties  
to survey <sup>and</sup> definitely locate and  
mark the County line between  
Fort Bend and Brazoria Counties  
from the North East Corner of the  
Francis Bingham League to  
the Common Corner of Harris, Fort  
Bend and Brazoria Counties, and  
it appearing to the Court that said  
work had been done as the  
law in such cases requires.  
It is ordered by the Court  
that said report be and the  
same is hereby accepted and  
approved. And the Clerk of this  
Court is ordered to re-  
cord same and fur-  
ther to make a certified  
copy thereof and return  
same to the <sup>commissioner of the</sup> Surveyor's  
Land Office, at Austin Tex.

asc.  
J. W. Munson  
Co. Dec 79.

RECEIVED  
MAY 2 1948  
GENERAL LAND OFFICE

MAP SHOWING  
COUNTY LINE BETWEEN  
FORT BEND & BRAZORIA COUNTIES  
SAN BERNARD RIVER TO COW CREEK  
IN TWO SECTIONS



Brazoria Co. Bldg. line 2

①  
MAP OF CO. LINE BETWEEN  
FORT BEND AND BRAZORIA  
COUNTIES. SAN BERNARD  
RIVER TO COW CREEK  
SURVEYED BY HEDICK AND  
MUNSON. MARCH AND JULY 1952.  
FILED IN C.L.O. MAR. 5<sup>th</sup> 1948.  
BRASCO CIVIL COMM. R.  
BY N.S.