

MAP of the County boundary line between Pecos County and Brewster County showing connections to the lines and corners of surveys on or near said County line, as well as natural objects crossed by or adjacent to said line. Made in accordance with an order of the District Court of Brewster County Texas November Term 1920, in the case of Pecos County vs. Brewster County No. 1886.

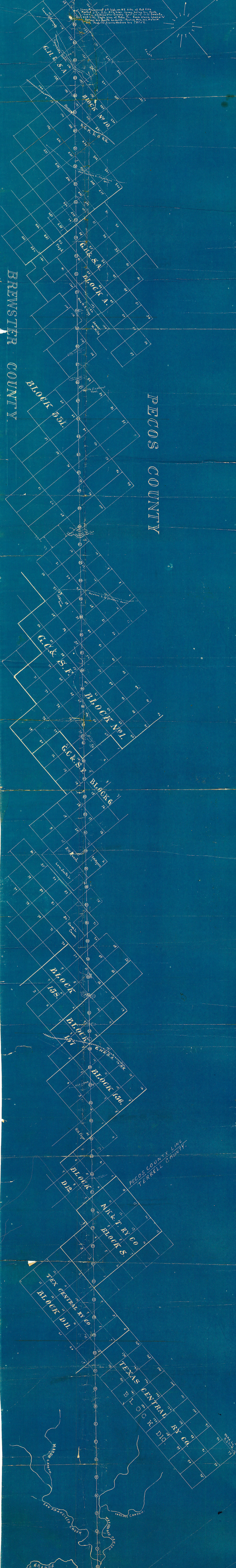
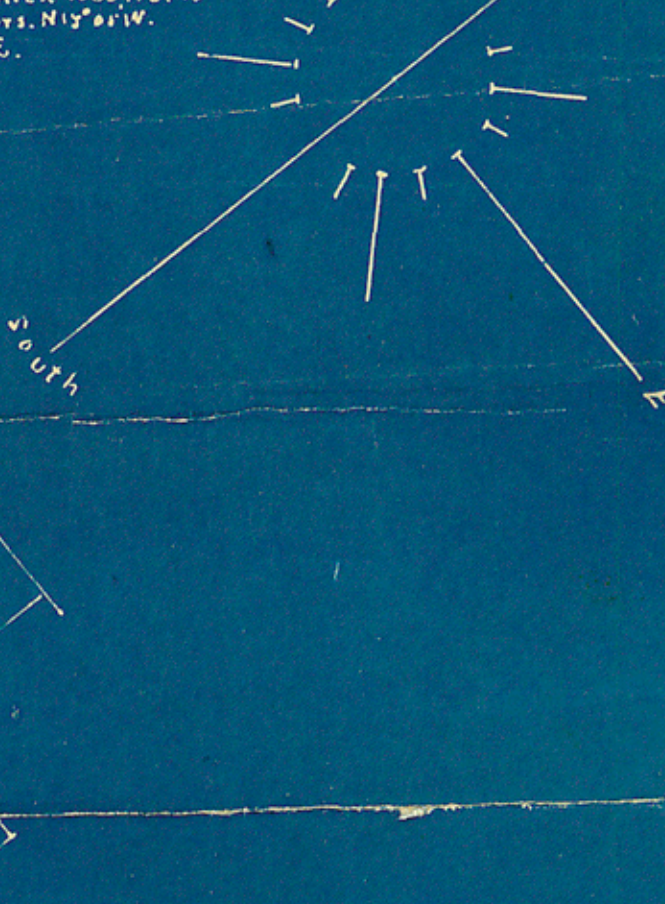
- Scale 2,000 one inch -

I, Robt. E. Estes, licensed State Land Surveyor Midland County Texas, do hereby certify that the herein Map was compiled from the data of a survey made by me on the ground and that the limits boundaries and corners, with the marks natural and artificial, are correctly set.

This 25th day of March, 1921

Robt. E. Estes
Licensed State Land Surveyor
Midland Texas.

Standard meridian of 103° 00' on NE side of R. 4. Hills
Meridian of 103° 00' on E. side of R. 5. Hills. North
Line of Brewster County East of R. 4. Hills
East of the South line of Pecos Co. From block boundary
to the South corner of Block No. 156. Meridian
Pecos Co. to the North corner of Block No. 156. E.



BREWSTER COUNTY

PECOS COUNTY

PECOS COUNTY LINE
TERRELL COUNTY

MEXICO



Brewster Co 19

BREWSTER

Small illegible markings at the bottom left.