

The State of Texas  
County of Briscoe

Field Notes of  
the West & South Boundary  
lines of Briscoe County  
Beginning at an Earth mound  
and circular trench 11ft in dia  
Set for N.W. Cor Briscoe County and  
N.E. corner of Swissler County  
in the south boundary line  
of Armstrong County from which  
a stone marked (N.W.) (N.E.) (S) A. set  
in Earth mound and circular trench

15ft diameter bears N 53° West 78 varas.

1st  
Thence South at 1832 varas a point  
526 varas East from the Sw corner  
survey No 57 Bk M 10 B.S. & T. 1853  
Earth mound and 2 pits

2nd  
Thence South 1893 varas a point  
526 varas E. from the S. West. Corner  
survey No 72 same Bk M 1900  
varas marked S. B. II

3rd  
Thence South 1900 varas a stone  
set in earth mound and 2 pits marked  
B S III

4th  
Thence South 1900 varas a stone  
mark S. B. IV.

5th  
Thence S at 23 varas a point  
526 varas E of the S.W. Corner Sur  
No 96 same Bk & 210 varas  
East of the N.W. corner Survey No  
137 same Bk at 1224 varas



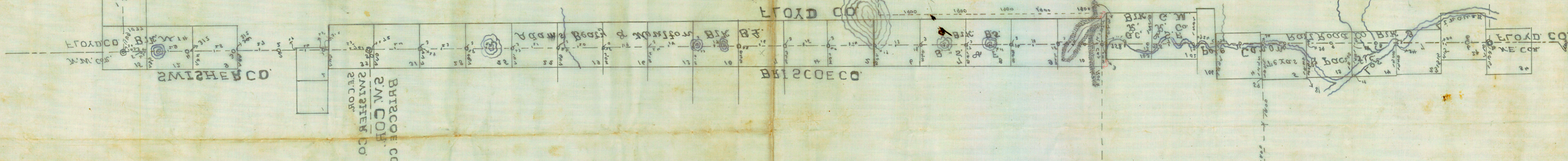
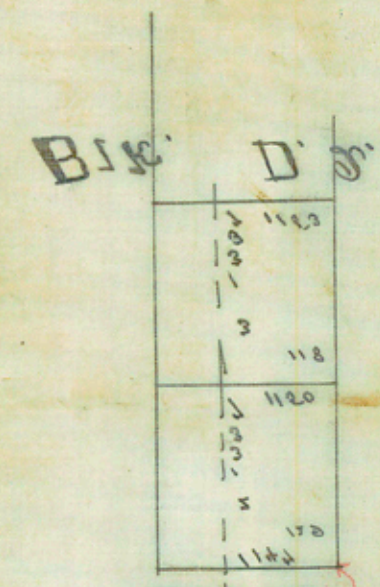
Briscoe Co  
Boundaries

Filed Aug. 30/92

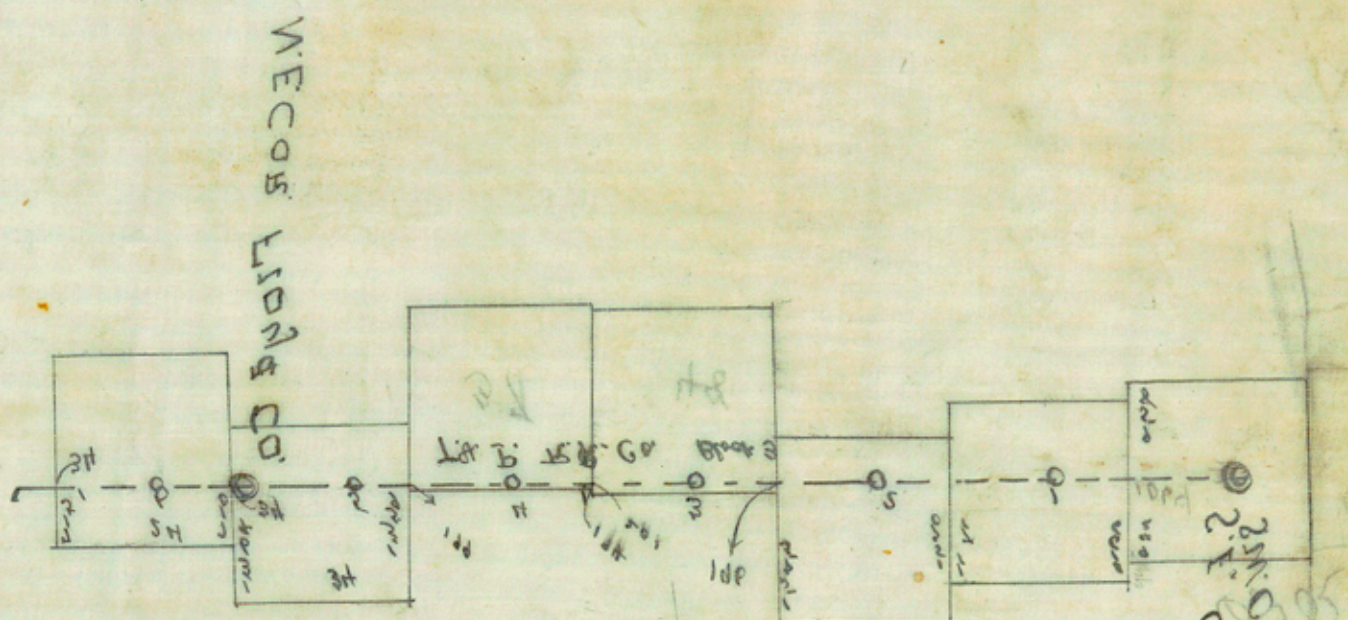
*Wm. Brantley*  
Chief Clerk



*Handwritten notes, partially mirrored from the reverse side of the page. The text is difficult to decipher due to the bleed-through and cursive handwriting.*

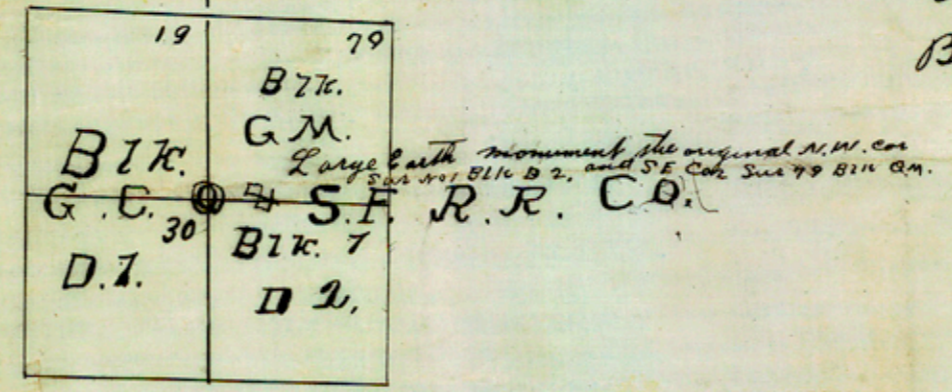
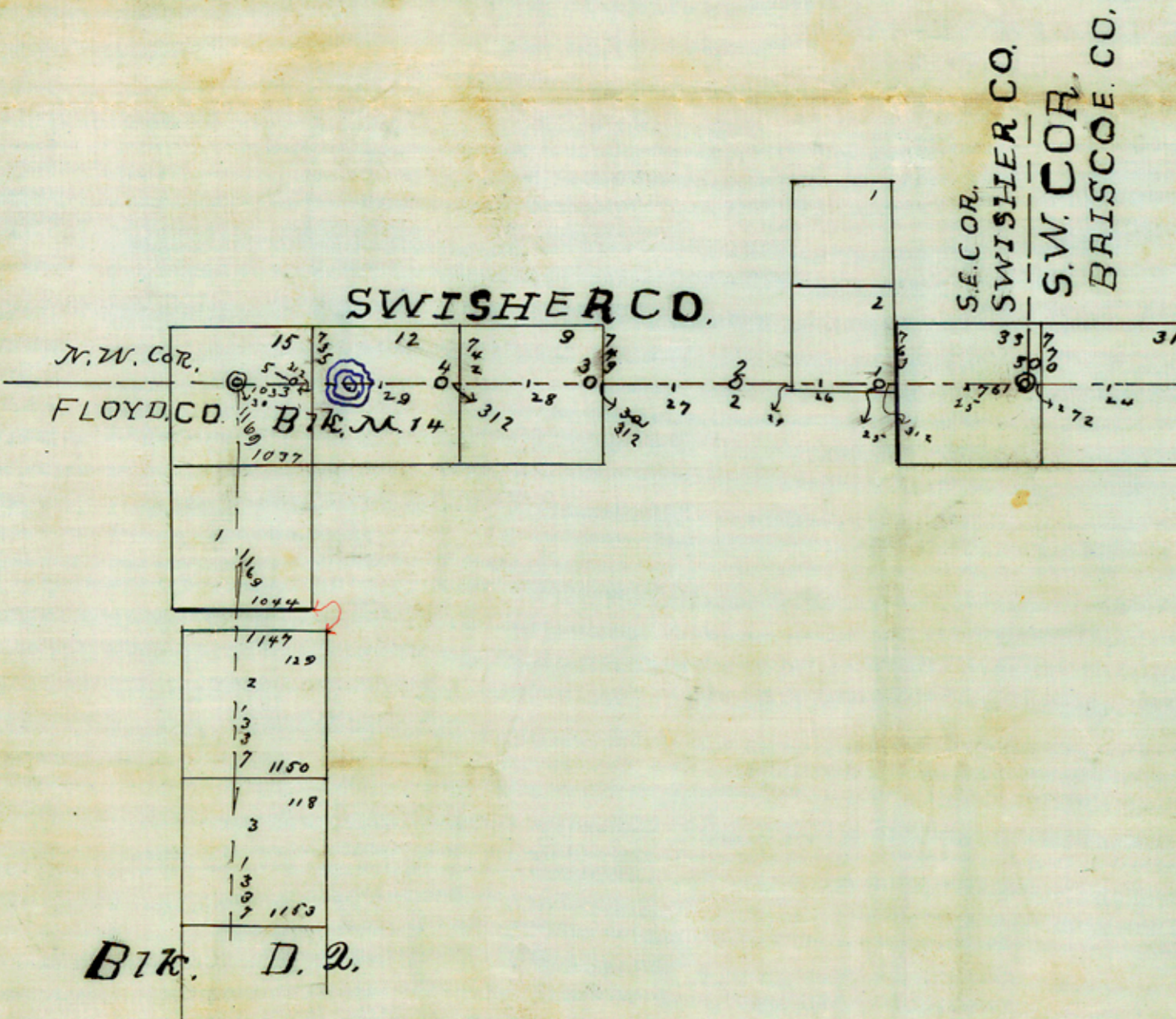
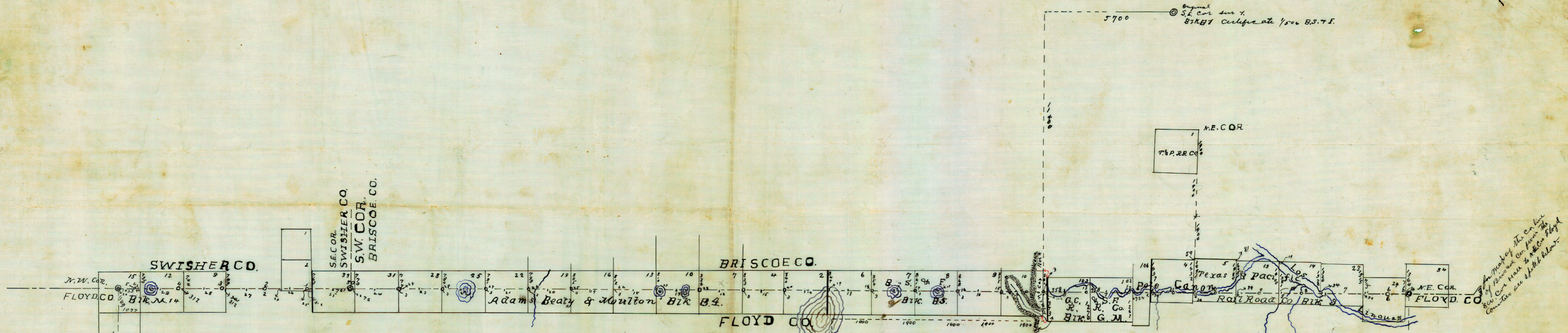


*Handwritten notes on the right side of the page, partially mirrored from the reverse side. The text is cursive and difficult to read.*



*Small handwritten notes at the bottom right corner of the page.*

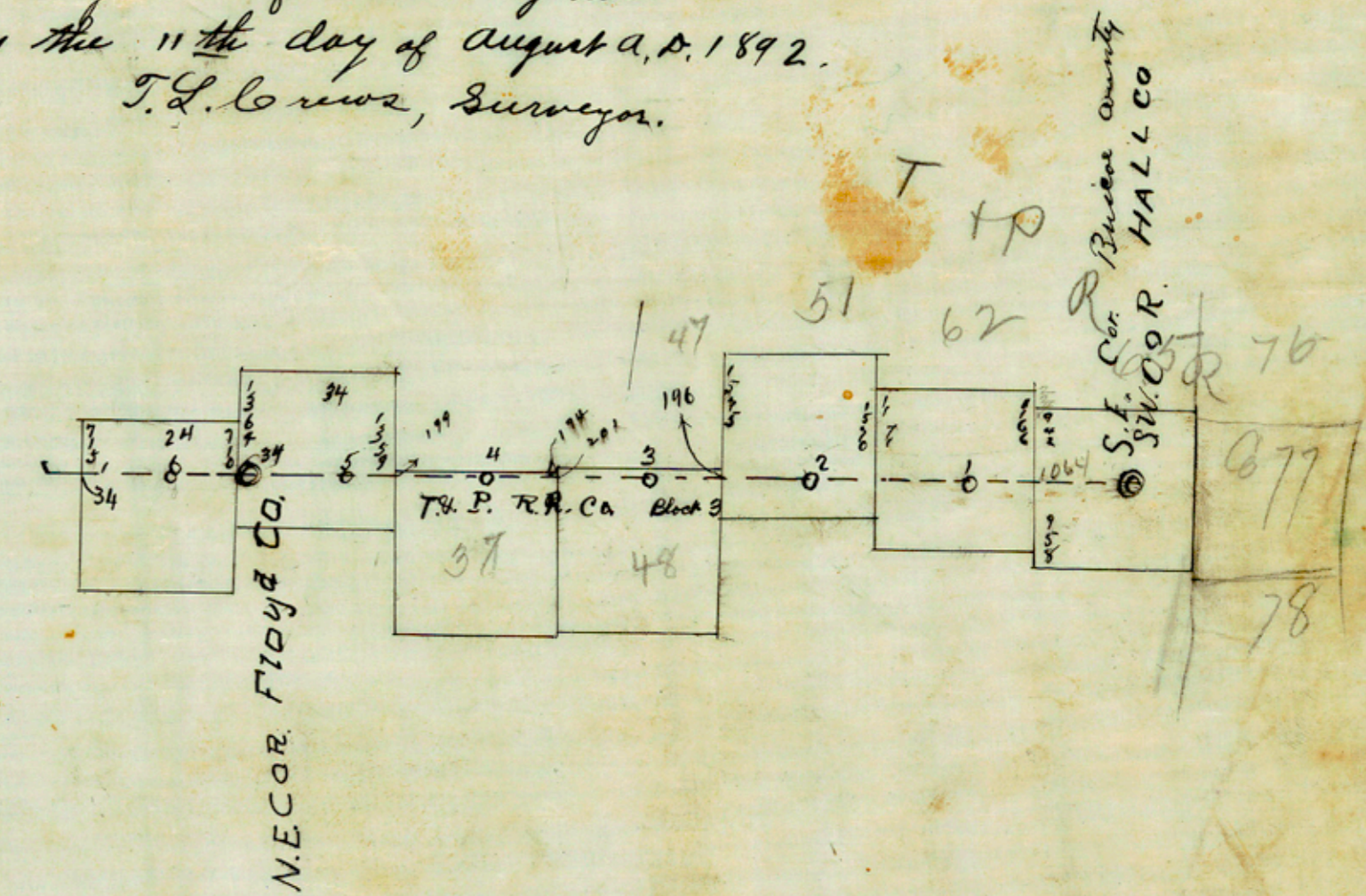




I, J. L. Crews Special Surveyor duly appointed and qualified by the Commissioners Courts of the Counties of Swisher, Floyd, Briscoe, and Briscoe counties to locate survey and mark the boundary lines of the counties aforesaid do hereby certify that the above map is a true and correct map of the north west and south boundary lines of Briscoe county.

In testimony whereof witness my hand at Silveston Texas this the 11th day of August A.D. 1892.  
J. L. Crews, Surveyor.

The State of Texas }  
County of Briscoe }  
I, J. L. Anderson County Clerk of Briscoe County do hereby certify that the foregoing Copy filed Field Notes is a true and correct copy of that approved by the Commissioners Court of the Boundary Lines of Briscoe County as located by J. L. Crews Special Surveyor on the 13th day of August A.D. 1892.  
Witness my hand and the seal of the County Commissioners Court of said County at office in Silveston, Texas this 19th day of August A.D. 1892.  
J. L. Anderson County Clerk  
Briscoe County Texas



*For map of the corner of Briscoe Co. from the corner line to the Floyd County see sheet below.*

*Copy filed 8/30/92  
Commissioners  
Briscoe Co*



The State of Texas,  
County of Briscoe

I, J. L. Anderson Cl.  
Clerk of Briscoe County do hereby certify  
that the foregoing Copy Field Notes is a  
true and correct Copy of that approved  
by the Commissioners Court of the  
Boundary Lines of Briscoe County as  
located by J. L. Crews Special  
Surveyor on the 13<sup>th</sup> day of August  
A.D. 1892.

Witness my hand and the seal  
of the <sup>Commissioners</sup> County Court of said County at  
office in Silverton, Texas, this 19<sup>th</sup>  
day of August A.D. 1892.

J. L. Anderson Cl. Cl.  
Briscoe Co. Tex.

Briscoe Co. Clerk  
Filed 20th/92

Filed Aug 30<sup>th</sup>/92

Wm. B. Brewster  
Chief Clerk

This copy to be approved  
by County & adjoining  
to complete as case



Boundary lines of Cheldress county  
which methods described  
there in have been carefully  
followed in making the  
locations herein referred  
to.

In testimony whereof  
I hereunto set my hand  
at Silvertown Inds this  
the 11<sup>th</sup> day of Aug A.D. 1892  
G. L. Brewer  
Special Sur.

I, Nat. G. Waller County Surveyor  
Briscoe of Briscoe County duly appointed  
and qualified to ascertain the  
relative position of the survey  
line along the County lines  
established by T. L. Brewer Special  
Sur. do hereby certify that  
calls for course & distance  
for points in the County  
line from survey corners  
were either made or  
computed from actual  
measurements in the field.  
Connections in Blk N 10. except-  
ed. Which connections were  
based on work of W. B. Hutchison  
Co. Sur. & Wisler Co. In testimony  
whereof witness my hand at Silvertown Inds this the  
11<sup>th</sup> day of Aug A. D. 1892.

Nat G Waller County Surveyor

Briscoe Co Ind



and Briscoe Counties to locate their County Boundary lines did on the 6th day of June proceed to locate the same in the following manner

At the South West corner of Hall County I established a true Meridian and laid off an angle of 90° to the West for a true east and West line at that point

From that point I produced the said line to the Westward making due deflections for the Curvature of the Earth and by doing so located a true parallel of Lat. and marked the same for the Boundary lines between Floyd and Briscoe Swisher and Hall Counties & the N line of Briscoe County

I also located a true meridian between Swisher & Briscoe Counties Great care was given to Course and measurement and the lines were well and permanently marked as will be seen from accompanying field notes. For more complete & full description, of means & methods, of establishing meridians & other lines, and for measurements and deflections on Parallels of Latitude reference is made to my report now on file in the Genl and Office on the work of locating the



Survey beginning the 6<sup>th</sup> day  
of June and continuing until  
the 25<sup>th</sup> day of July A.D. 1892

Magnetic variation varies from  
10° 12" E to 10° 35" E

Joe L. Bantrell. Chain  
Men, E. M. N.,  
O. D. Stallings

J. T. Crews surveyor duly  
appointed and qualified by  
the Commissioners courts  
of Hall, Swisher, Floyd, and  
Buckeye counties, to locate mark and  
survey the Boundary lines of the counties  
aforesaid, do hereby certify  
that the foregoing survey as shown by  
the field notes attached hereto was  
actually made on the ground according  
to law and the dates, and with  
the Chain men, aforesaid, duly sworn  
and that all the corner lines  
and boundaries and marks of  
the same whether natural or  
artificial are truly set forth in  
the maps and field notes  
In testimony whereof witness  
my hand at Silverton this  
11<sup>th</sup> day of August, A.D. 1892  
J. T. Crews Special Sur.

J. T. Crews duly appointed and  
qualified by the Commissioners  
courts of Hall, Floyd, Swisher



- 25<sup>th</sup> mile Thence West at 1030 varas pass  
Earth mound & 2 pits the 19<sup>th</sup> mile  
Post for Floyd County 1900 varas  
an Earth mound and 2 pits
- 26<sup>th</sup> mile Thence West at ~~1030~~  
1030 varas pass an Earth mound  
and 2 pits Crossing draw  
1900 varas gas pipe Marked (B.M. 17)  
in Earth mound & 2 pits.
- 27<sup>th</sup> mile Thence West 1030 varas pass Earth  
mound & 2 pits 1400 varas earth  
mound and 2 pits for the 27<sup>th</sup>  
mile post Briscoe County
- 28<sup>th</sup> mile Thence West at 623 varas  
enter lake at 1129 varas pass out  
of lake 1900 varas a gas pipe marked  
(B. 28) (F) set in Earth mound  
and 2 pits 28<sup>th</sup> mile post  
for Briscoe County.
- 29<sup>th</sup> mile Thence West at 1030  
an earth mound and 4 pits  
1900 varas an Earth mound & 2  
pits for the 29<sup>th</sup> mile post for  
Briscoe County
- 30<sup>th</sup> mile Thence West at 1030 varas  
pass an Earth mound and  
2 pits At 1899 varas a point  
770 varas South of the N-E.  
Survey No 33 Block B 4 A. B. & m  
2169 varas The S.W. Cor Briscoe County  
a stone 33" x 9" x 4" marked (+) on top  
(F) on south edge (S.E.) on west face  
(S.W.) on East face set in Earth mound  
3 ft high 12' diameter

and trench

F7



1900 gas pipe marked ( $\frac{14}{B}$ ) F.  
for the 18<sup>th</sup> mile post for  
Briscoe County  
19<sup>th</sup> mile Thence west at 1030 pass  
Earth mound and 2 pits on  
Western slope 1900 yards on Earth  
mound and 2 pits in the North Edge  
of a large lake

20<sup>th</sup> Thence West at 1080 yards pass an  
Earth mound and 2 pits  
1900 yards a gas pipe marked ( $\frac{20}{BM}$ )  
(F)

21<sup>st</sup> mile Thence West at 1080 pass  
an Earth mound & 2 pits, 1900  
yards an Earth mound  
and 2 pits.

22<sup>nd</sup> mile Thence West 1030 yards  
pass an Earth mound and 2 pits. 1900  
a gas pipe set in Earth mound  
and 2 pits marked ( $\frac{22}{B.M.}$ ) (F.)  
for the 22<sup>nd</sup> mile post for  
Briscoe County

23<sup>rd</sup> mile Thence west at 390 yards enter  
at 775 pass out dry lake at 1030  
yards pass an Earth mound and  
2 pits at 1463 yards enter dry Basin  
at 1900 yards set Earth mound &  
2 pits in Basin

24<sup>th</sup> Thence West at 25 yards pass out  
of Basin at 1030 yards pass  
an earth mound and 2 pits  
1900 yards a gas pipe marked  
( $\frac{24}{B.M.}$ ) (F) set in Earth mound and  
2 pits the 24 mile post  
for Briscoe County.



14<sup>th</sup> mile Thence West at 800 varas cross same  
pole Cañon at 1030 varas a sand stone  
marked (F) (B) in stone and the  
8<sup>th</sup> mile post for Floyd Co.

9<sup>th</sup> mile Past at 1780 varas cross  
same Cañon at 1788 varas a 10773  
North and 95000 varas East from  
the large earth mound Original  
N.W. Cor of Survey No 1 Blk. D. 2.

G. C. & S. F. RR Co at 1897 varas a  
point 12282 varas South and 37000  
varas West from the original S.E. Cor.  
Sur No Blk B31. B. S. T. E. 1900 varas  
a stone mound for the 14 mile post for  
Briscoe County

15<sup>th</sup> mile Thence West at 668 varas a  
stone mound on top of Plains from  
which a peak bears  $350^{\circ}46'E$  and low  
mound on prairie bears South  $63^{\circ}45'E$   
a peak bears north  $38^{\circ}34'E$  at 833  
enter Cañon 1900 varas an earth  
mound and 2 pits for the 15<sup>th</sup>  
mile post for Briscoe County

16<sup>th</sup> mile Thence West at 1030 varas  
an earth mound and 2 pits for the  
10<sup>th</sup> mile Post for Floyd County  
1900 varas set a gas pipe in Earth  
mound & 2 pits marked  $\frac{10}{13}$

17<sup>th</sup> Mile Thence West at 1030 varas  
an Earth mound and 2 pits in the  
Center of dry lake 1900 varas set  
Earth mound and 2 pits

18<sup>th</sup> mile Thence West at 1030 varas  
an Earth mound and 2 pits  
in dry lake the 12<sup>th</sup> mile post for Floyd Co

F5



marked F on the South face TB 10  
on the north on the South bank  
of a creek.

11<sup>th</sup> mile Thence West passing along  
said Creek at 1030 yards an Earth  
mound and 2 pit. 1900 yards a sand  
stone marked F on the South  
B on the north on the West  
slope of gravelly point on the south  
bank of a creek from which a mulberry  
tree 5 in diameter bears S.  $83\frac{1}{4}^{\circ}$  W 17 yards  
The West end of High Red bluff bears  $N10^{\circ}45'E$ .

12<sup>th</sup> mile Thence West at 520 yards  
a point in a small canon 2 yards  
south of its junction with a creek  
Creek

at 635 yards and 820 yards cross  
and recross creek at 1030 yards  
set sand stone the 6<sup>th</sup> mile  
post for Lloyd County. At 1064  
yards a point 1437 South of the  
North West corner of Survey 4 Block  
3 T. & P. R. Co. which is 1900 yards  
and 7137 yards South of the original  
N. E. Cor. Survey 1 same block

At 1530 yards cross canon at 1840 High  
Red, <sup>Bluff</sup> Crossing creek 1900 yards a sand  
stone from which Canon & Bluff bears  
East 50 yards a double Colt marked  
bear North  $20^{\circ}25'E$ .

13<sup>th</sup> mile Thence west at 220 yards cross  
same canon at 515 yards enter and at  
640 yards pass out of same canon  
and crossing again at 1900 set red  
sand stone marked B. 13. F. in stone and  
F 4



At 1004 varas a point 1364 varas South of the N.W. Cor Sur 34 Block 3.

✓ D. & P. R.R. Co. 1900 varas East and 2 pits the 6<sup>th</sup> mile Post  
4<sup>th</sup> Thence West at 1030 varas an Earth mound and 2 pits the 1<sup>st</sup> mile post for Floyd Co.

at 1900 varas set stone B.F. for the 7<sup>th</sup> mile Post Briscoe County from which a bluff and white ledge of rock bears South  $5^{\circ}15'$  West on the South Side of creek

8<sup>th</sup> mile Thence West at 179 varas pass a Rock mound on the south slope of a hill facing Creek at 553 varas enter and 800 varas pass out of Creek course S. 70 E.

and again enter at 906 and at 1307 pass out of same Creek 1900 varas a stone mound on the East bank of a gulch

9<sup>th</sup> mile Thence West at 25 varas and at 600 varas cross gulches at 1030 varas pass a mound + 2 pits 1900 varas 3 large stones set in Earth mound and 2 pits at the south foot of a natural mound one stone marked B.F. the 9<sup>th</sup> mile for Briscoe County

10<sup>th</sup> mile Thence West at 1030 varas pass earth mound and 2 pits for the 4<sup>th</sup> mile post for Floyd Co. from which the west bluff edge of a natural mound bears  $N 22^{\circ}14' E$ .

a peak at the foot of the plains bears  $N. 11^{\circ} W$  1900 varas a sand stone



And a Round top mountain at the  
Edge of Plains bears S 38 1/2 west  
1st Thence West at 1064 varas a  
mile print 942 varas South of the NW  
Corner Sur <sup>SNOW 65'</sup> B.P. 3 T. + P.  
R.R. Co. 1900 varas gas pipe  
in Earth md. + 2 pits marked

2nd Thence West at 1900 Earth md  
+ 2 pits on small elevation  
Quilque Peak S 23° 20' W  
Peak at foot of Plains bears N 67  
40' W

3rd Thence West passing out of  
M Sand Hills 1900 set gas pipe  
marked 2 for the 3rd mile  
post for Briscoe County

4th Thence West at 224 varas enter  
M and at 320 varas pass out of Dry  
Basin 1900 varas an Earth mound  
and 2 pits The Quilque Peak bears  
S 9° 45' W Peak at foot of Plains bears S 39° 45' W

5th Thence West at 900 set gas pipe marked  
mile M Co 5 B. Co. for the 5th mile post  
for Briscoe county

6th mile Thence West at 1030 varas  
set a red Sand Stone in Earth  
md + 4 pits F. C. Coron west fall  
B Co L on the north and M on  
the East face from which a mound  
at foot of Plains bears N 39° 40' W, a  
small <sup>Knob</sup> bears S 30° 42' W.

The Quilque Peak S 71° 26' E the  
faced stake <sup>(NW. C. M. Co. 30 M)</sup> set for the N.W.  
Corner of Molly Co. bears S 85 varas  
FR



at 11 20 varas pass out 1900  
 varas set earth mound and 2 pits  
 26<sup>th</sup> Mile Thence South at 1720 enter Basin  
 at 2100 set set a pipe marked 26  
 B.S. at 3800 varas set earth mound +  
 2 pits for the 27<sup>th</sup> mile Post  
 28<sup>th</sup> Mile Thence South at 12 45 varas point  
 263 varas west of the N.E. Corner  
 Sur No 34 A. B. & M. Block B +  
 1900 varas set a gas pipe marked  
 28 B.S. in Earth mound + 2  
 pits  
 29<sup>th</sup> Mile Thence South at 1900 varas set earth mound + 2 pits  
 Thence South at 2015 varas the  
 South East Corner of Swisher  
 30<sup>th</sup> Mile County + the South West Corner  
 of Briscoe County set in the  
 North line of Floyd County a  
 stone 33" x 9" x 4" marked (H) on top  
 marked (F) on south Edge (S) on  
 west face (S<sup>B</sup>W) on the East in  
 trench 12' diameter + mound 3ft  
 high

100<sup>th</sup> Mile The South line of Briscoe County  
 Beginning at the S.W. Corner  
 of Hall County a stone mound  
 marked (S.W. Cor. H) S.E. Cor. B  
 and M.C.L. from which a hick berry tree  
 on sand small bears N 59 1/2 W. 665 varas  
 And another bears S. 78 W. 620 varas  
 Quitague Peak bears South 35° W

FI



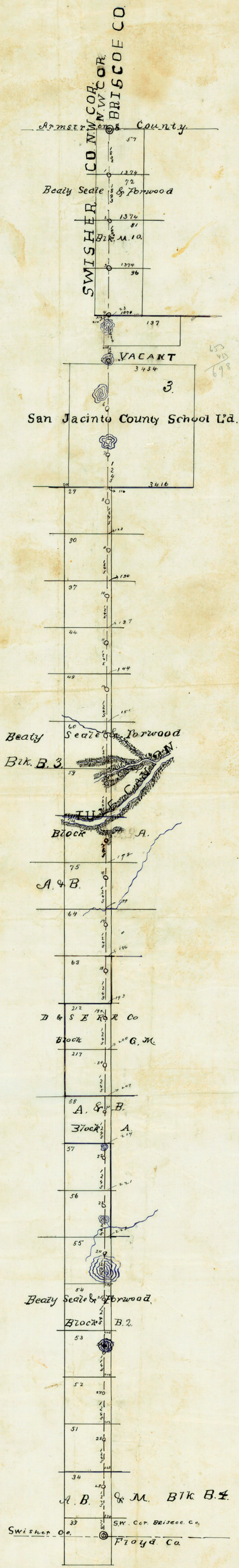
- 15<sup>th</sup> Mile Thence South 1380 varas a point  
 in the Tule Cañon 1900 varas a point
- 16<sup>th</sup> Mile Thence S at 140 varas gulch at 480  
 an earth mound capped with small  
 flat stones from which a cedar in head  
 of Break bears South 78E 38. varas,  
 1900 varas a gas pipe 1" x 2 1/2" XVI B.S.
- 17<sup>th</sup> Mile Thence South at 1245 varas a point  
 in draw. (course NE) 1900  
 varas an earth mound & 2 pits
- 18<sup>th</sup> Mile Thence South 1900 varas to  
 a gas pipe set in Earth mound  
 & 2 pits B.S. 18.
- 19<sup>th</sup> Mile Thence South at 1245 varas  
 a point 193 var west of the N.E. Cor  
 of Sec 212 Blk A.M. to an earth mound & 2 pits
- 20<sup>th</sup> Mile Thence South at 1900 varas at gas  
 pipe in Earth mound & 2 pits marked B.S. 20.
- 21<sup>st</sup> Thence South at 1245 varas a point 207  
 varas west of the N.E. No 58. A. + B. Blk A.  
 1900 varas an Earth mound & 2 pits
- 22<sup>nd</sup> Mile Thence S at 1245 varas enter Basin  
 1400 varas pass out of same 1900 var  
 as a pipe marked 22 B.S.
- 23<sup>rd</sup> Mile Thence South 1900 varas to an earth  
 mound and 2 pits
- 24<sup>th</sup> Mile Thence South at 460 varas enter  
 basin and at 680 varas pass out  
 at 900 varas a point in Rock  
 Draw 1900 varas a pipe marked 24  
 B.S. set in Earth mound & 2 pits
- 25<sup>th</sup> Mile Thence South at 40 varas enter a basin



1 a point in its south Boundary  
 2 line 210 varas East of its SW cor.  
 3 1520 + 400 varas enter lake 1900 varas  
 4 a stone marked (V B.S.)  
 5 6th mile Thence South at 45 varas point:  
 6 ~~34 34~~ <sup>3400</sup> varas west of the N.E.  
 7 Corner of League no 3 S. J. B. S. Pat  
 8 75 varas pass out of lake at 1320  
 9 a point in East edge of Basin  
 10 1000 varas a stone marked BS V1  
 11 7th mile Thence South at 975 varas enter  
 12 Basin and 1571 varas pass out  
 13 1900 varas a stone and Earth mound & 2 pits  
 14 8th mile Thence South 1245 varas a point  
 15 3416 varas west of the S.E.  
 16 Corner of said League No 3. and  
 17 116 varas west of the N.E. Corner of  
 18 Sur No 29 Bldg B 3. B 3 + E  
 19 1900 varas to Earth mound and 2 pits  
 20 9th mile Thence South 1900 varas to a stone  
 21 marked 1 X B.S. Earth mound & 2 pits  
 22 10th mile Thence South 1900 varas to an Earth mound & 2 pits  
 23 Thence South 1900 varas to a stone  
 24 11th mile marked X1 B.S. set in Earth mound & 2 pits  
 25 12th mile Thence South 1900 varas to an Earth mound & 2 pits  
 26 Thence South at 1802 varas a point in  
 27 deep white Gulch 1900 varas a stone  
 28 set in stone mound marked X111  
 29 14th mile Thence South 1640 varas a point in  
 30 Canon 1900 varas a stone in stone mound  
 31 marked XIV B.S. between the heads  
 32 of 2 gulches



See 2805  
with map (1888)  
from W. S. Foster  
Oct. 188 - M. 10.



55  
698

center 5075



1  
Briscoe County

N and S. bdy Sines

Filed Aug. 30<sup>th</sup> / 92

Wm Braullette  
Chief Clerk

N bdy required in and  
that this Co can be  
come a separate land  
Dist. The  
sub. bdy.