

To the Hon Commissioners Court
 Burnet County Texas

I, E. J. Moses County Surveyor of Burnet County having been appointed by your Hon Body to proceed in conjunction with the Surveyor appointed by the Commissioners Court of Williamson County to survey and ascertain the boundary line between Burnet and Williamson Counties on the 8th day of September 1880 would beg leave to make the following report, to wit,

I proceeded to survey said line in connection with C. Morelle County Surveyor of Williamson County and having met the beginning corner of Burnet County, viz,

The West Corner of the J. Carothers League ran S 26° W 1 1/2 miles and also 3 miles of the line running N 45° E (see Field Notes)

Field Notes of Burnet and Williamson County line

Beginning at the NW corner of the J. Carothers League at which is planted a Cedar post. Thence N 45° E at 1223 vs a drain, at 1225 vs another drain, at 1900 vs 7 mill post, at 3038 vs intersected the W line of the J. W. Stapp survey 30 vs S 19° E from the NW cor of same at 3800 vs the Channel of the North San Gabriel 2nd Mile, at 5580 vs a branch, at 5700 vs 3rd Mile a Post and Stone mound

from which a Live Oak Marked BW brs N
46 E 112 $\frac{1}{4}$ varas another Marked BW brs S 49 $\frac{1}{2}$ E
32 varas

Then Beginning at the North West Corner
of the J Carothers League for the Beginning Corner
of Burnet County, Thence S 26° W at 361 varas a
branch, at 834 varas a branch at 1845 varas a branch
at 1900 varas 1st Mile Post at 3183 varas
The North line of M^{rs} Survey at a point 73;
varas N 71° E from its N W Corner at 3729 varas Cross
a branch at 3800 varas 2nd Mile post, at 4242 varas
a branch at 5589 varas an old Marked tree, at
3 Miles a Post; at 6200 varas Cross Austin and
Lampasas Road, at 6980 varas Bear Creek, at
4 Miles a post on west side of a Hill, at 9263
varas Telegraph line Austin & Burnet, at 5 Miles
a post, at 6 Miles a post, at 6 Miles & 920 varas
intersect the South line of the McKinney League
at a point 970 varas S 71° W, from its S E Corner
at 6 Miles and 990 varas the South Gabriel
at 7 Miles a post, Continue 9 Miles a post,
at 9 Miles and 990 varas Cross Bagdad & Burnet
Road, 10 Miles a post in Mr Epprights field
at 10 Miles and 300 varas intersect the W line of
the Gray League, at 10 Miles and 380 varas
a branch, at 10 Miles and 1100 varas Cedar Mill
and Bagdad Road, at 11 Miles a Post, at 11
miles and 950 varas a Spanish Oak Marked
Three Nicks,

274
Field notes & Sketch
of part of the County line
between Burnet & William,
son Counties.

Filed Novemb. 24th 1880.

Roads & Fences
Clear.

signed by surveyor of Burnet
and line run by boat.

The line was well marked and so defined that it will be little trouble to parties owning lands on the line, to ascertain the quantity they own in each County

Attached hereto is a sketch showing the line as run, together with its connections with surveys on the line, connections were made when reliable corners could be found and identified

All of which is respectfully submitted
Witness my hand this 28th day of September
A. D. 1880

E. J. Moses

C^o Surveyor Burnet County

Jennings Bros., Printers, Bookbinders and Blank Book Makers. Marshall, Texas.

CERTIFICATE OF TRUE COPY.

The State of Texas, }

COUNTY OF Burnet }

I, D. L. Luce Clerk of the County Court of Burnet

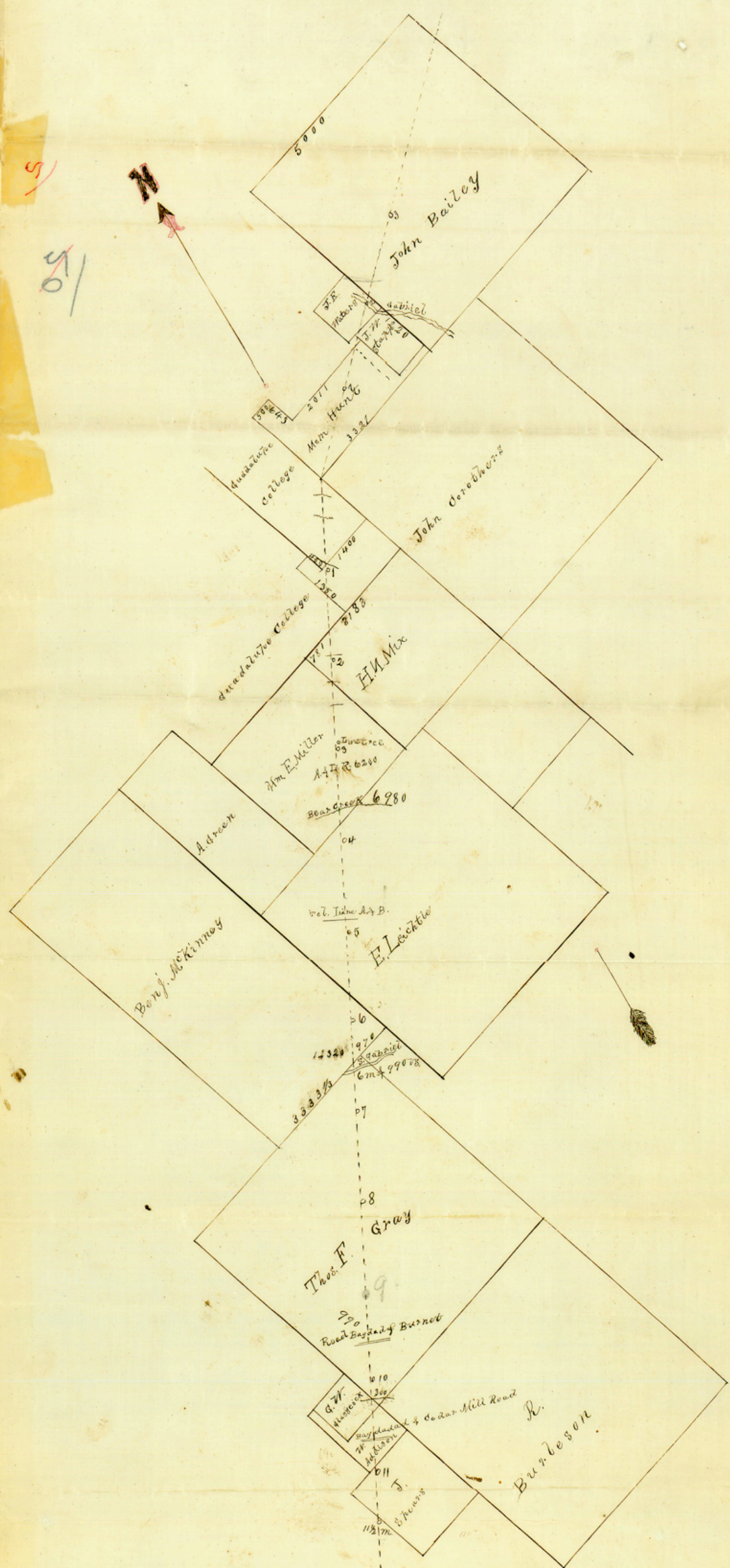
County, do hereby certify that the afore and foregoing is a true and correct copy of the Report of E. J. Moses C^o Surveyor of Burnet C^o as copied from the Minutes of Commrs Court of said C^o Book A page 328

To certify which, I hereto sign my name and affix the seal of my office, at Burnet this the 22nd day of November A. D. 1880

D. L. Luce

Clerk.

9/50



Plat of County Line Williamson & Burnet
Counties 14 1/2 Miles
 Scale 2000 Yards 1 Inch
 Variation 10° 15' E.
 Sept. 12th 1889