

Hon H. C. Walsh
Comm. Land Office
Austin Texas

Sir

The following is a synopsis
of the report made by the surveyors of Burnet and
Blanco counties to their respective Commissioners, reports
of the survey of the county line between the county of Burnet
and Blanco. Approved and accepted by the Com. Comm.
Court of Blanco county, at the regular meeting, November
Term.

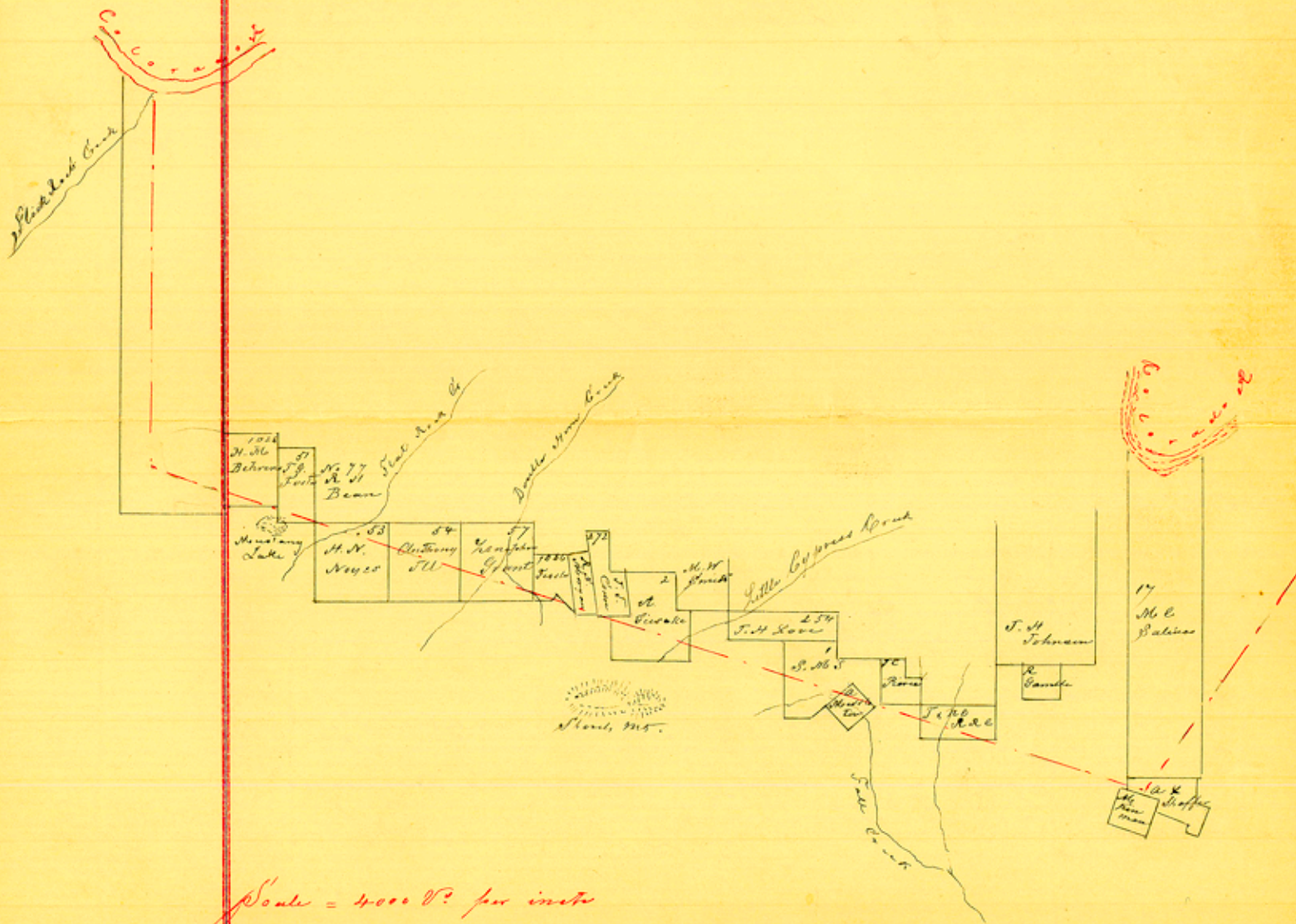
Met J. W. Chamberlain Esq. Surveyor of Burnet
county on February 24th 1865. The NE corner of
Blanco county being the terminus of our line and
not established at that time we were compelled after ma-
king a commencement of the survey to postpone our
work until the establishment of said corner could be
effected.

By agreement we met again on the 22nd day of
September 1865 and after running a random line
and ascertaining the course of the true line to be
 $N 73^{\circ} 2' W$ we proceeded to run, mark and establish
the boundary line between the counties of Burnet and
Blanco both surveyors agreeing thereto, of which line
the following field notes and accompanying plat, are
a true and correct representation, to wit:

Beginning at the NE corner of Burnet county,
as established by a survey of the Travis and Burnet
county line made in February 1865, the same
being the NE corner of Blanco county; A Stone
Mound four miles South of Colorado River, whence

a Live Oak bro S. 83° E 5 Varas dist, a ditto bro N. 88° W
 4 Varas dist

Thence N 42° 2' W - at 3380' a Ravine at 5520' of W. L.
 X Shaffer's survey No 57 - 2550' South of SW corner of M.
 C. Salinas Survey N 17 and 1670' North of corner of said
 Shaffer survey on the NE line of the M. Penman
 survey, at 7280' a Branch of Falls creek,
 at 1 Mile a Stone Mound, whence an Elm bro N 80° W
 170' So bro N 79° 34' W 15 1/20', at 1 Mile 14470'
 pass South of SW corner of Gamble survey 12040'
 at 2 Miles a Stone Mound whence a small Live Oak
 + bro S 88° E 160', at 2 Miles 1930' pass 370' South
 of SE corner of S. N. O. L. R. Co Survey No 4, at 2 Miles
 13840' a Branch of Falls River, creek
 at 3 Miles a Stone Mound whence a Live Oak bro
 N 1° W 9440' dist a ditto bro S 88° E 220', at 3 Miles
 + 2910' the West line of said Texas N. O. L. R. Co survey
 No 4 - 3950' South of the NW corner of the same and
 4390' South of the SE corner of the T. C. Pierce survey
 at 3 Miles 14170' pass 970' South of the SW cor-
 ner of said Pierce survey, at 3 Miles 15910' cross
 NE line of A. Middleton survey No 203 - 1440'
 N 45° W of the East corner of the same
 at 4 Miles Stone Mound, whence a L. O. bro.
 S 46° W 25 1/20', a ditto bro S 26 1/2° W 28 1/20'
 at 4 Miles 16010' cross the NW line of said Middle-
 ton survey 4050' S 45° W from the North corner
 of the same
 at 5 Miles Stone Mound whence a L. O. bro



Scale = 4000 ft. per inch

Respectfully submitted

Blanco, October 29th
1885

P. S. Appelt
C. S. R. C.

I Philippe Francis Appelt, county surveyor of Blanco county hereby certify that the foregoing report with the field notes and plat contained therein is correct.

P. S. Appelt C. S. R. C.

I J. W. Chamberlain, county surveyor of Burnet county hereby certify that the foregoing report with the field notes and plat contained therein is correct.

J. W. Chamberlain
C. S. Burnet County

West line of said Behrens survey 402 0' North
of the SW corner of the same at 12 Miles 16 7/8 0'. The
East line of T. A. Hartline Survey No 4 - 5780' North
of the SE corner of the same
at 13 Miles a Stone Mound whence a Post Oak
bros N 7° E 3 1/2 0'. a ditto bro N 79° E 26 1/2 0'.
at 13 Miles 1375 0'. pass 110° S 18' E of the corner
made by Mc Cartty and Brown for the SE corner
of Hans county, at 13 Miles 18 11 0'. the SE
corner of Hans county established by the survey
of Hans and Burnett county in June 1885
a Stone Mound 5 Miles South of the mouth of
Stick Rock Creek whence L. C. bro S 63 1/4 W
50 0'. a ditto bro S 65 1/4 W 75 0'.

Bearing trees and Stone Mounds marked B.B.
with figures denoting the number of miles from
the beginning corner

Survey completed October 12th 1886

Variation 9° 52' East

J. C. Joseph Bird Jr.
J. R. Belle

Survey No 54 - 190 V. North of the SE corner of the same,
 at 9 Miles a Stone Mound whence a R. B. bro S 30 1/2 E
 18 3/4 V. a ditto bro S 42 E 14 Varas at 9 Miles 555 V.
 Double Horn creek at 9 Miles 1044 V. The East line
 of Anthony Survey No 54 789 V. North of the SE corner
 of the same

at 10 Miles a Stone Mound whence a Post Oak bro
 S 54 1/2 W 16 V. a ditto bro S 5 1/2 W 16 V. at 10 Miles
 1125 V. The East line of the St. N. Noyes Survey
 No 53 - 533 V. South of the NE corner of the same
 at 11 Miles Stone Mound, whence a Post Oak
 bro. N 54 E 10 1/2 V. also a ditto bro. N 8 1/2 W 14 1/2 V.
 at 11 Miles 245 V. a branch

at 11 Miles 671 V. Flat Rock creek at 11 Miles 952
 V. cross South line of G. A. Bean Survey No 77
 256 V. East of the SW corner of the same, at
 11 Miles 1231 V. The East line of the S. G. Foster
 Survey No 57 - 85 Varas North of the SE corner of
 the same

at 12 Miles a Stone Mound on North side of
 Mustang Lake, whence a R. B. bro. S 12 E 19 1/2
 V. a ditto bro S 49 E 34 V. at 12 Miles 3130 V.

The East line of the P. W. Shelly survey 10 V. South
 of the NE corner of the same 369 V. North of
 the SW corner of the S. G. Foster survey
 at 12 Miles 332 V. cross the South line of the
 W. A. Babers Survey No 1028 - 28 Varas West of the
 SE corner of the same at 12 Miles 1643 cross the

S 87 $\frac{1}{2}$ E 40 $\frac{1}{2}$ Varas a ditto bar N 89 $\frac{1}{2}$ W 43 $\frac{1}{2}$ V. dies
at 5 Miles 122 V. cross the East line of S. W. S
Survey No 1 - 943 V. South of the NW corner of the same
at 5 Miles 1520 V. pass South of the NW corner of the
J. H. Love survey No 254 - 1261 Varas

at 6 Miles Stone Mount whence a L. O. bar. S 29 $\frac{1}{2}$ E
100 V. dies a ditto bar. S 49 $\frac{1}{2}$ E 17 V. at 6 Miles 190 V.
a Ravine, at 6 Miles 430 V. a Ravine at 6 Miles
537 V. cross the East line of A. Cisside Survey No 2
903 V. South of the NE corner of the same at 6 Miles
1028 V. a Branch of Little Cypress Creek at 6 Miles
1498 V. pass 593 V. South of the SW corner of Perry
James survey No 261 at 6 Miles 1688 V. Skull
Branch

at 7 Miles Stone Mount whence a Cedar bar. N 9 $\frac{1}{2}$ E
42 Varas the West end of Shoch Mountain bar S 38 $\frac{1}{2}$ W
at 7 Miles 470 V. a Ravine at 7 Miles 737 V.
a Branch, at 7 Miles 1137 cross the West line
of the J. T. Conn survey No 272 100 V. N 10 $\frac{1}{4}$
of the SW corner of the same

at 7 Miles 1838 V. cross West line of A. S. Morgan
Survey No 414 - 282 V. N 10 $\frac{1}{4}$ of the SW corner
of the same and 2 Varas N 10 $\frac{1}{4}$ of the 3^d corner
of the J. Fessler survey No 10 1/2

at 8 Miles a Stone Mount, whence a small
Live Oak bar S 4 $\frac{1}{2}$ E 21 $\frac{1}{2}$ V. a ditto bar N 1 $\frac{1}{2}$ E
22 $\frac{1}{2}$ V. the West end of Shoch Mountain bar S 8 $\frac{3}{4}$ E
at 8 Miles 447 V. cross line of said J. Fessler
survey 43 V. N 30 $\frac{1}{2}$ E of the 5th corner of the same
at 8 Miles 821 V. a Branch at 8 Miles 941 V.
cross the East line of the Xenophon Grants

P. 2 of 4

6/

County Boundary Line
between the Counties of
Burnet
&
Blanco

abstract corrected and
copy for'd to Compt. of
Pub. Accts
Jan'y 19th/88 Beaumont

File Dec 17. 86
A. J. Hall
Clerk

Beaumont

P