

In the Commissioners Court Burnet Texas.

Burnet and Lamparas County Line.

Report of County Surveyor
on Burnet and Lamparas County line, received approved and
ordered to be recorded, being as follows to wit:

The State of Texas }
Burnet County } To the Hon. Commissioners Court Burnet County
Texas.

I J. A. Chamberlain Surveyor of Burnet County, having been
appointed by your Honorable body on the 16 day of May 1883 to
Survey in conjunction with the Surveyor of Lamparas County the
boundary line between Burnet and Lamparas Counties, having pro-
ceeded in the time and in the manner directed, to run mark and es-
tablish said line, beg leave to submit the following field notes, and
accompanying plat as my report of the same: Surveyors agreeing
thereto to wit:

Beginning on a continuation of the old boundary line of
Burnet and Lamparas Counties as run and marked by John Harvey
in 1853, 5070 varas. N. 30° W. of where the E. line of the W. P. Reese, Survey
No. 12 crosses the Lamparas River, a stone mound whence a L. O. br. S. 23°
W. 25 1/2 vs. a do. br. S. 80 1/2° W. 31 1/2 vs. And the S. E. Corner of the Craig Thomas Survey
br. S. 19° E. 675 vs. Thence W. 45 vs. a Spring 930 vs. the N. line of said Thomas Survey
80 vs. N. 71° E. of its N. W. corner. 1347 vs. Upton Branch 1 mile a stone mound. Whence
a L. O. br. N. 23° E. 16 vs. 1 mile 130 vs. a small ravine. 1 mile 681 varas. the N. line
of the G. C. + S. F. A. R. Co. Sur. No. 21. 897 vs. N. 71° E. of the S. W. cor. of the J. J. Upton
Survey 1 mile 1032 vs. Gregory Branch. 1 mile 1321 varas a Bra. 1 mile 1578 vs.
the W. line of the J. J. Upton Sur. 292 vs. N. 19° W. of its S. W. cor. 2nd mile a st. md.
Whence a L. O. br. N. 25 1/2° W. 23 1/2 vs. 2 mile 617 vs. a ravine. 2 mile 687 vs. the W. line
of the G. C. + S. F. A. R. Co. Sur. No. 21. 1129 vs. N. 19° W. of its S. W. cor. 2 miles 1188
vs. a Rav. 2 miles 1438 vs. the E. line of the G. C. + S. F. A. R. Co. Sur. No. 2. 1450 vs.
S. 19° E. of a corner of Survey No. 22. 3rd mile a st. md. whence a L. O. br. S. 84° W.
14 vs. 3 mile 547 vs. a Rav. 3 mile 980 vs. a Rav. 3 miles 1229 vs. pass.

Counter 50902

417 vs. N. 19° W. of the N. E. Corner of the Conrad Dravner Sur: 3 miles 1256
 vs. a Rav. 4th mile a stone mound: 4 mile 458 vs. the E. line of the C. G. Roberts
 Sur. 596 vs. S. 19° E. of its N. E. Cor. 4 mile 1515 vs. the Lamparas River: 5th mile
 a stone mound, whence a L. O. br. S. 45° W. 40 vs. 5 mile 73 vs. Cross the W.
 line of the C. G. Roberts Survey 130 vs. S. 19° E. of its N. W. cor: 5 mile 465 vs. a
 Burnt Brauch: 5 mile 1391 vs. a Rav. 5 miles 1848 vs. a ravine: 6 miles a
 st. md. 6 mile 728 vs. Burnt Brauch 7 miles. a st. md. whence a L. O. br.
 N. 43° W. 2 vs: 7 mile 32 vs. the W. the W. line of the Sarah Punnington Sur.
 1830 vs. N. 19° W. of its S. W. cor. 7 mile 37 vs. a bra. 7 mile 640 a ravine. 7 mile 826
 vs. the E. line of the T. J. A. Co. Sur. No. 8: 584 vs. N. 19° W. of its S. E. Cor. 8 mile
 a st. md. whence a L. O. br. S. 62° W. 30 vs. 8 mile 944 vs. the W. line of said Sur.
 No. 8 - 657 vs. S. 19° E. of its N. W. corner: 8 miles 1325 vs. a ravine. 9 miles a
 stone. md whence a L. O. br. S. 88° W. 13 vs - 9 mile 7 vs. the E. line of the C. W.
 Holler Sur. 35 vs. N. 19° W. of its S. E. Corner: 9 mile 60 vs. a brauch. 9 miles
 792 vs. a ravine: 9 mile 853 vs. the W. line of said Holler Survey: 312
 vs. N. 19° W. of its S. W. corner 9 miles 1070 vs. a brauch 9 mile 1475 vs.
 Mesquite Creek: 9 mile 1704 vs. a Rav. 10 miles a stone mound whence
 a L. O. br. N. 79° E. 19 1/2 vs: 10 miles 168 vs. a bra. 11 miles a stone md.
 whence a mesquite br. S. 13° W. 9 1/2 vs. 12 miles a st. md. whence a
 L. O. br. N. 50 1/2° E. 27 1/2 vs. 12 miles 684 vs. the E. line of the Thos. Dawson
 Survey 324 vs. N. 19° W. of its S. E. corner. 12 miles 1507 vs. the E. line of the
 Jesse Washburn Survey 231 vs S. 19° E. of its N. E. Corner: 13 miles a st. md.
 13 mile. 318 vs. the N. W. corner of said Jesse Washburns Sur: 13 mile 1104
 vs. pass 10 vs. N. 19° W. of W. N. Washburns, N. W. Corner: 14 mile a stone md:
 14 mile 208 vs. the W. line of the Jerry Arnold Survey in a small Rav. 140 vs
 N. 19° W. of its S. W. corner: 15 miles a stone mound - 15 mile 1060 vs. Gre
 Wood brauch. 15 mile 1185 vs. the E. line of the J. W. Hart Sur. 349 vs. S. 19° E. of
 its N. E. Corner, 15. mile 1610 vs. a bra. 16 mile a stone mound: Whence a
 B. J. br. S. 58° W. 7 vs. 16 miles. 205 vs. a Ravine. 16 mile 1240 vs. Pac Br. 16
 miles 1269 vs. a br. 16 miles 1368. vs. the W. line of the C. K. Reese Survey
 320 vs. N. 19° W. of its S. W. corner: 17 miles a st. md. Whence a P. O. br
 N. 20 1/2° W. 35 vs. 17 miles 41 vs. a ravine. 17 miles 375 vs. a Ravine: 17

of Yaucy Creek brs. N. 10° W 229 ms.

J. W. Rule

E. W. Greenwood

F. D. Schooley

Wm. Jennings

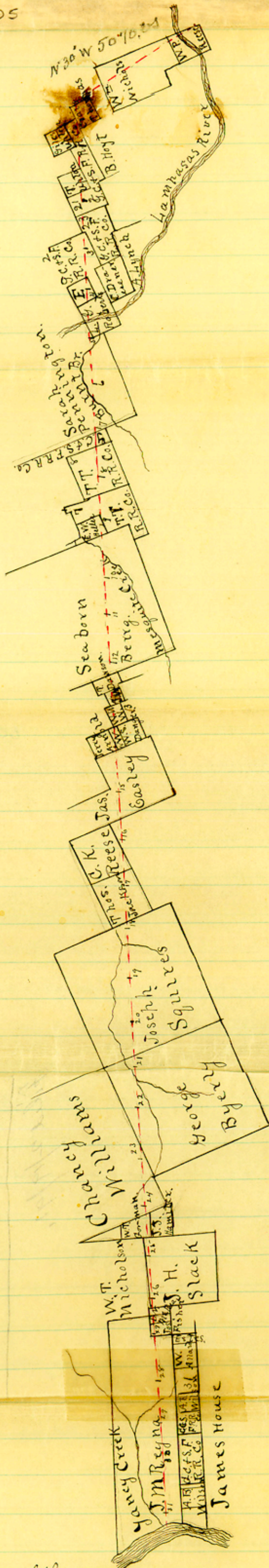
Chain Carriers-

Variations 9° 57' E.

Bearing trees and Stone Mound marked B.L. and the figures denoting the number of miles from the beginning point. Witness our hands this August 6th AD, 1883.

J. A. Chamberlain
Surveyor, Burnet County.
G. C. Greenwood
Surveyor, Lampasas Co.

Counter 50905



Scale 4000 m. 7 x 1 in ch.

The State of Texas
County of Burnet
I, D. B. Luce, Clk. County Court and
Ex. officio Clk. Commissioners Court in and for said Burnet
County, hereby certify that the foregoing is a true copy of an
order of the Commissioners Court of said Burnet County as
the same appears of record in the minutes of said court,
made and entered on the 15th day of August 1883, as will
Counter 50906

Burnet Co. Bdy line #7a

of Yaucy Creek brs. N. 10° W 229 ms.

J. W. Rule

E. W. Greenwood

F. D. Schooley

Wm. Jennings

} Chain Carriers -

Variations 9° 57' E.

Bearing trees and Stone Mound marked B.L.
and the figures denoting the number of miles from the beginning
point. Witness our hands, this August 6th A.D. 1883.

J. A. Chamberlain

Surveyor, Burnet County.

G. C. Greenwood

Surveyor, Lampasas Co.

mile 1503 varas a tra. 17 mile 1560 vs. the W. line of the Thor. Jackson
Sur. 1009 vs. N. 19° W. of its S. W. cor. 18 miles a stone mound. Whence a P. O.
tra. S. 3° E. 7 3/5 vs. 18 miles 740 vs. the South fork of the Sulphur Creek: 19
miles a st. md. in the head of a ravine Whence a P. O. tra. S. 77° E. 4 vs.
19 miles 996 vs. a ravine. 19 mile 1598 vs. a ravine, 19 mile 1686 vs. a
Ravine: 20 mile a stone mound: Whence a P. O. tra. N. 6° E. 24 vs. 20 mile
1410 vs. the W. line of the Joseph Squires Sur. 1332 vs. S. 19° E. of the N. W.
corner of the same: 20 mile a rav: 21 mile a st. md. Whence a P. O. tra
S. 11° W. 10 vs: 21 miles 940 vs. Esby Fork of Sulphur: 22 miles a stone
Mound, Whence a L. O. tra. S. 9° W. 59 vs. 22 mile 770 vs. a tra. 22 miles 830
vs. the same tra. 22 miles 863 vs. the same: 22 miles 946 vs. a branch
22 miles 1785 vs. a Rav. 23 miles a stone mound. 23 miles 998 vs.
pass 390 vs. N. 19° W. of the N. W. corner of George, Byerly Survey: 23
miles 1130 vs. a branch. 24 mile a stone mound = 24 mile 90 vs. a Rav:
24.7 mile 483 vara the W. line of the Chauncy Williams 52 vs. N. 19° W. of the N. E.
Corner of the J. J. Hamilton Survey: 24. mile 1408 vs. the E. line J. J.
Slack Survey 83 vs. N. of the N. W. Corner of said Hamilton Survey. 25
mile a stone mound in the head of Bogg Branch, whence a Mesquite
tra. S. 88 1/2° E. 30 1/2 vs. 25 mile, 1440 vs. said branch: 25 mile 1238 vs. the
same: 26 mile a Stone mound Whence a P. O. tra. N. 21° W. 40 vs: 26 mile
544 varas, the W. line of said Slack Survey: 197 vs. S. of its N. W. Corner
26 mile 1228 vs. the W. line of the D. N. McRea Sur. 197 vs. S. of its
N. W. Corner 27 miles a Stone Mound Whence a P. O. tra. N. 12° E. 27 vs
27 mile 336 vs. pass 5030 vs. N. of the N. E. Corner of the Warren Allord Sur.
28 miles a stone mound in a Skin Oak thicket: 28 mile 898 vs. a Rav.
28 mile 1095 varas a rav: 28 mile 1640 vs. the South Fork of Yaucy Creek
29 miles a stone mound. Whence a L. O. tra. N. 3° E. 13 vs. 29 miles. 170 vs.
a Rav. 29 mile 365 vs. a Rav: 29 mile 1775 vs. a ravine 30 miles a stone
mound whence a cedar tra. E. 82 vs. - 30 mile 460 vs. Bear Br. 30 mile
1640 vs. a Ravine: 31 miles a stone mound. Whence a L. O. tra. N. 69° E. 13 vs
31 mile 360 vs. a stake on the Bank of the Colorado River, whence an
Ash tra. N. 18° W. 10 1/2 vs. a pecan tra. N. 33° W. 2 1/2 vs. and the mouth
Counter 50904

appear on Minute Book "B" at pages 189-190+191.

In testimony whereof witness my hand and
the seal of said court this 12th day of March 1890.

D.L. Luce, CLK.

By Theo. Smith, Deputy

⁸
County Luce

Copy of an Order
From

Bunch County
Commissioner's Court.

Filed 2/19/91.