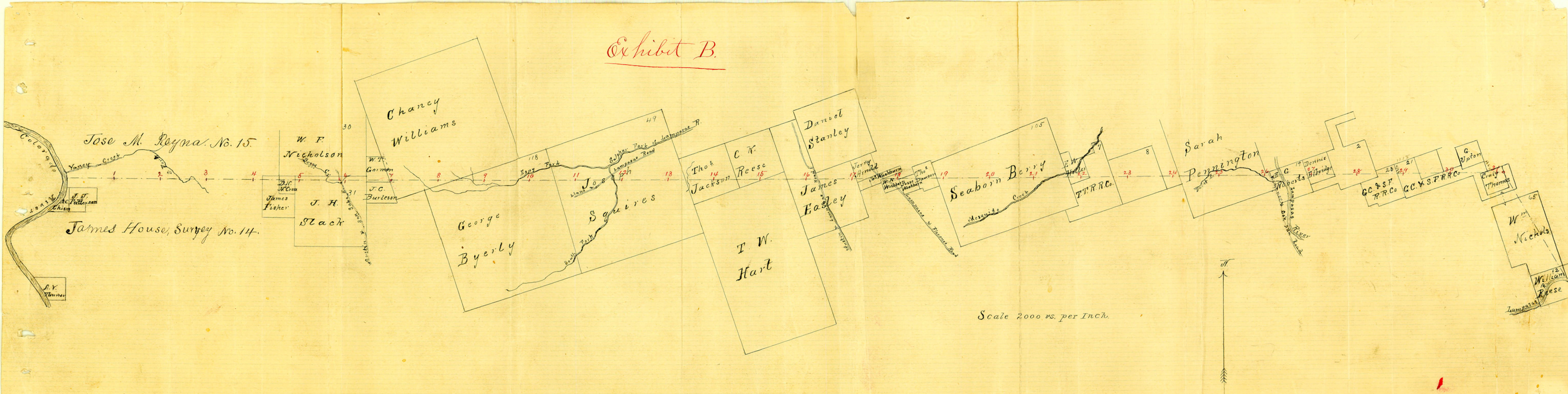
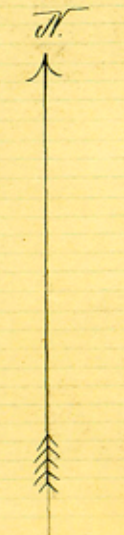


Exhibit B.



Scale 2000 vs. per Inch.



North Line Burnet Co. *B*
South Line Lampasas Co.

Filed in Gen^l Land Office
Feb'y 26th 1895 -

Examined & found correct - the
only objection is that no mile post or bounds
have been established as the B. & O. Co.
require. July 19/95. W. H. [unclear]
This is a survey of John [unclear]
[unclear] differing from it only in so
far as was necessary in straightening
the old line. B.

See Letter Book N^o 396

Page 124

Moses

8

North Line of Burnett
and South line of Lam-
pasas: Filed in the
Gen. Land Office Feby 26th
1895

~~W. H. H. H.~~
Check



1 of Texas.

2
3 The State of Texas. I J. M. Dougherty
4 County of Burnet, Clerk of the County
5 Court in and for Burnet
6 County, Texas, do hereby certify
7 that the above and foregoing is a
8 true and correct copy of an order
9 made and entered by the Commissioner's
10 Court of Burnet County, at a special
11 term, January 11th 1895, as appears
12 of Record in minutes of said Court
13 Vol. "C" pages 457 and 458.

14 Witness my hand and seal of Office
15 this 22^d day of January A.D. 1895.
16 J. M. Dougherty
17 Clk. Co. Court Burnet County

1 place of meeting to make such survey,
2 And it further appearing to the Court
3 that said E. J. Moses' special surveyor a-
4 fforesaid prior to Nov 26th 1894, filed
5 his bond and took the oath as required
6 by Article 690 of the Revised Statutes, and
7 that on Nov 26th 1894, the day fixed for said
8 survey to commence, the said E. J. Moses at-
9 tended at the place named in said
10 order to commence said survey and
11 that V. N. Zivily on behalf of Lampasas
12 County attended at said time and
13 place under and according to the
14 appointment of Commissioners Court
15 of Lampasas County, as shown by Ex-
16 hibit "A" to the report of said E. J.
17 Moses, attached, the said E. J. Moses
18 proceeded to perform the duties as-
19 signed him, and having made his
20 report of said survey to the Commis-
21 sioners Court of Burnet County, and
22 said report having been fully con-
23 sidered by this Court the same is
24 hereby approved and ordered to be
25 recorded, And that a certified
26 copy thereof together with certified
27 copies of the order made on 3rd day
28 of Oct. 1894, the notices and returns
29 showing services on Lampasas County
30 and of this order approving said report
31 be forwarded by the Clerk of this Court to
32 the Commissioners of the General Land Office

1 State of Texas, Be it remembered that
2 County of Burnet, On this, the 7th day of
3 January A. D. 1895. There
4 was begun and holden a special Term
5 of the Hon-Commissioners Court of
6 Burnet County, at the Court House, in
7 Burnet - Said State and County.

8 Present, Hon J. A. Crews Co. Judge
9 of said County, presiding. H. A. Burns,
10 R. P. Ray - M. A. Marrs, and J. K. Daugh-
11 erty Co. Commissioners, C. Corboudt,
12 Sheriff and J. M. Daugherty Clerk
13 of said County - and among other
14 proceedings had, the following order
15 was made to wit:

16 January 11th 1895 -
17 Now on this the 11th day of January A. D.,
18 1895 came on to be heard and considered
19 in open Court the report of E. J. Moses
20 Special Surveyor appointed by Burnet
21 County through the Commissioners
22 Court of said County on the 3rd day
23 of October 1894, to make a survey of the
24 line that separates Burnet County from
25 Lampasas County, as surveyed by John
26 Harvey, Deputy Surveyor of Travis
27 County, as stated in the order of appoint-
28 ment of said E. J. Moses, Special Surveyor,
29 aforesaid, and it appearing to this
30 Court that Lampasas County has been
31 duly and legally notified of the con-
32 templated survey, and of the time and

1 And it is hereby agreed that the Surveyor
2 V. N. Zively be allowed \$500 per day for
3 said Services, not to exceed five
4 days.

N. F. Weeks, Co. Judge
J. C. Morgan, Co. Clerk
B. C. Greenwood, Precinct No. 1
R. B. Buchanan " " 2
J. W. Prentiss " " 3
T. J. McAtee " " 4.

10 Recorded in Vol No 4. page 257.
11 Lampasas Commissioners Ct.

12 State of Texas } J. J. McDougherty, Co.
13 County of Burnet } Clerk in and for
14 said County, do hereby
15 certify that the above and foregoing is
16 a true and correct copy of the Report,
17 Plat. Exhibit "A" &c, of E. J. Moses, spec-
18 ial County Surveyor, relating to the
19 Burnet and Lampasas Counties
20 line, as the same appears of
21 Record in the minutes of the Com-
22 missioners Court of Burnet County
23 in Vol - No "C" pages 458 to 468, inclusive.

25 Witness my hand and seal of Office
26 this the 22^d day of January 1895.

27 J. J. McDougherty
28 Clk. Co. Court Burnet County

Exhibit "A"

1
2 November Term - Lampasas Commissioners Court -
3 Nov. 17, 1894.

4 Whereas the County Court of Burnet County
5 on the 1st day of October 1894, authorized
6 E. J. Moses, in behalf of Burnet County, to
7 proceed on the 26th day of November, 1894
8 to ascertain and report to Burnet County
9 Commissioners Court the true position
10 and condition of the John Harvey line;
11 located between Burnet and Lampasas
12 Counties, between the 25th day of October
13 1852, and the 8th day of May 1853, and
14 whereas said Commissioners Court has served
15 Citation on the proper Officers of this Court
16 that said E. J. Moses would on said 26th day
17 of November 1894 be on the ground to make
18 said survey, it is ordered by this Court
19 that V. N. Zivily, on behalf of Lampasas County
20 meet the Surveyor of Burnet County for
21 the purpose of investigating what said
22 Burnet County Surveyor shall do under
23 his appointment, and the said Surveyor,
24 appointed to represent Lampasas County
25 shall make full report to the County Judge
26 of Lampasas County immediately after
27 such Surveyor of Burnet County shall
28 have made his survey, said report to
29 show fully what was done by the Surveyor
30 of Burnet County and whether such
31 Surveyor to have found the line claimed
32 to have been run by said Harvey.

1 B & L X and the figures denoting the
2 number of miles from the initial
3 or beginning cor on the East bank
4 of the Colorado River.

5 E. L. Corley
6 W. F. Bodenhamer, } Chain
7 J. J. Esby } Carriers,
8 J. W. Proffitt }

9 J. Ealy J. Moses,
10 Special Surveyor, appointed by the
11 Commissioners Court of Burnett
12 County Texas, to make a survey of
13 the Boundary line between Burnett
14 and Lampasas Counties as recited
15 in said order (quoted at the begin-
16 ning of this report), do hereby cer-
17 tify that the foregoing field notes
18 and Map or Plat were made accord-
19 ing... law and that said survey
20 was actually made by me on the
21 ground, and that all the marks,
22 corners and monuments set forth
23 in said report of Survey are
24 truly and correctly described in
25 said Plat & field notes. Jan 10th 1895;

26 Ealy J. Moses
27 Special Surveyor,
28
29
30
31
32

1 described corner. This being same
2 cor. made by Chamberlain and
3 Greenwood for the N.E. cor. of Burnet
4 County - Thence S, 30° E, with the line of
5 Bell County 199 vs, Craig Branch 1051
6 vs, the same Branch; at 2259 $\frac{1}{2}$ vs, in-
7 tersect the line run by E. Brown 51 vs,
8 N. of the N.E. cor of Burnet County as
9 made by said Brown 2541 vs, a small
10 Drain 2712, vs, Gregory Br, 3016 vs, a
11 small Branch; 3284 vs, a Drain; 3586 vs,
12 a deep Ravine; 4454 $\frac{1}{2}$ vs, the N. line of
13 the N^m Reese sur, No, 12, 118 vs, S, 71° N, from
14 the N.E. cor, of the same; at 4894, vs, a
15 Drain; 5045 vs, the N. edge of the water
16 in the Lampasas, River; 5070 vs, in-
17 tersect the E. line of the said Reese sur,
18 in the center of the Lampasas River,

19 I was ably aided in all my
20 work by Mr. T. A. Chamberlain, an
21 experienced practical Surveyor, I
22 commenced the Survey on the 26th
23 day of November 1894, and finished
24 the field work on the 14th day of
25 December 1894, and complete field
26 notes, together with accompanying Plat,
27 marked Exhibit **B** filed with the Com-
28 missioners Court of Burnet County
29 on the 10th day of January A.D, 1895.
30 Bearing trees marked BIX unless
31 otherwise stated,

32 The Mile monuments are marked

1 N. 19° W. from the S. E. cor. of said sur,
2 and 95 vs, S. 19° E. from a cor. of G. & T
3 S. F. R. R. Co. Sur. No. 23, at 28 miles 1037
4 vs, a Drain at 28 miles 1597, vs, a Drain,
5 con. N. 33° W.; at 28 miles 1649 vs, the E. line
6 of the G. & T. S. F. R. R. Co. Sur. No. 23, 372
7 vs, S. 19° E. from the N. E. cor. of the same,
8 at 29 miles a st. md. whence a L. O. brs,
9 S. 66½° W. 23 vs, do, brs, S. 54½° W. 23 vs,; at
10 29 miles 624½ vs, the N. line of the T. J.,
11 Upton sur. 293 vs, from the S. W. cor.
12 of the same, at 29 miles 902 vs, a branch;
13 at 29 miles 1192 vs, Gregory Branch, con,
14 S. 5° E.; at 29 miles 1668 vs, pass 35 vs, S. 19° E
15 from the S. E. cor. of said Upton sur; at
16 30 miles a st. md. whence a L. O. brs N. 1° W.
17 22 vs, at 30 miles 170 vs, a Drain; at 30
18 miles 1211⅞ vs, pass 27 vs, N. 19° W. from the
19 N. W. cor. of the Craig Thomas sur; at
20 30 miles 1298 vs, a small Drain. Con,
21 S. 10° E.; at 31 miles a st. md. whence
22 a L. O. brs, N. 83½° E. 61½ vs, at 31 miles 279
23 vs, Craig Branch; at 31 miles 325 vs,
24 a st. md. for the N. E. cor. of Burnett
25 County and the S. E. cor. of Lampasas,
26 County marked **B & I. COR.** whence
27 a L. O. brs, S. 23° W. 25½ vs, do, brs S. 80½ W.
28 31½ vs, both mkd **B. L. C.** and the S. E. cor.
29 of the Craig Thomas sur brs S. 19° E.
30 675 vs, also the N. E. cor. of said
31 Thomas sur, brs 289 vs, N. 19° W. from
32 a point 8 vs, N. 71° E. from the above.

1 1189 vs, the Lampasas and Oak Alla Road;
2 at 25 miles 1774 vs, Bwrit Branch, con,
3 S, 5° E, at 26 miles a st. md, whence a Pean
4 bar. S, 53½° E, 24½ vs, at 26 miles 222½ vs, I
5 pass 138½ vs, South of the N, W, cor, of the
6 E, G, Roberts 320 acre survey with same,
7 bearing trees as called for, by John
8 Harvay, bearing the same, corner, that
9 said Harvay in his report calls to
10 run some 50 vs, South of; at 26
11 miles 270 vs, the N, line of the E, G, Roberts
12 sur. in the Kompner and Oak Alla
13 Road 146 vs, S 19° E, from the N, W, cor, of
14 said Roberts sur.; at 26 miles 720 vs,
15 the Lampasas River; at 26 miles 1504
16 vs, Rock Prairie Branch con, S, 55° N;
17 at 26 miles 1781 vs, the E, line of the E, G,
18 Roberts sur, 604 vs, S, 19° E, from the N, E,
19 cor, of the same 780 vs, N, 19° N, from
20 the S, E, cor, of said sur, and 421 vs,
21 N, 19° N, from the S, W, cor, of the Dennis
22 Ethridge sur, at 27 miles a st. md,
23 whence a L.O. br, N, 34° E, 18½ vs, at 27
24 miles 933 vs, the E, line of said Dennis
25 Ethridge sur, 79 vs, N, 19° N, from the S, E,
26 cor, of the same; 27 miles 976 vs, a Drain;
27 at 27 miles 1249 vs, The same Drain;
28 at 27 miles 1699 vs, Copperas Cove and
29 Oak Alla Road con, N, 25° E; at 28 miles
30 a st. md, whence, a L.O. br, S, 50° N, 7¾ vs,
31 do. br, N, 27° N, 1170 vs.; at 28 miles 804
32 vs, the E, line of survey No, 2, 172 vs,

1 at 21 miles 1407 vs, the E. line of the
2 Seaborn Berry sur, 2613 vs, S, 19° E, from
3 the N.E. cor, of the same; 1023 vs, from
4 the N.W. cor, of the E.W. Haller sur, and
5 317 vs, N, 19° W, from the S.W. cor. of said
6 Haller sur, and 1259 vs, N, 19° W, from the
7 S.E. cor. of said S. Berry sur; at 22
8 miles a st. md, whence a L.O. brs. S, 27° E, 14²/₁₀
9 vs, at 22 miles 300 vs, a Drain, con.
10 N, 19° W; at 22 miles 355 vs, the E. line of
11 the E.W. Haller sur, 27 vs, N, 19° W, from
12 the S.E. cor. of the same; at 22 miles
13 937 vs, a Drain; at 22 miles 1326 vs, the
14 E. line of J. J. R.R. Co, sur, No 7, 1215 vs,
15 N, 19° W, from the S.E. cor. of the same and
16 1585 vs, S, 19° E, from the N.E. cor. and 685
17 vs, S, 19° E, from the N.W. cor, of section No. 8;
18 at 23 miles a st. md, whence a L.O. brs,
19 S, 82° E, 15⁶/₁₀ vs, at 23 miles 1434 vs, the E. line
20 of section 8, 560 vs, N, 19° W, from the
21 S.E. cor, of the same; at 23 miles 1629¹/₂ vs,
22 a branch; at 24 miles a st. md, on a
23 Rocky ledge or bench, whence a L.O. brs,
24 S, 43° E, 41 vs; at 24 miles 252 vs, the N.
25 line of the Sarah Pennington sur, 1855
26 vs, N, 19° W, from the S.W. cor, of the same
27 and 355 vs, from the N.E. cor, of the
28 Robert Merritt sur; 24 miles 312 vs, a
29 branch, con, N 32° E, at 24 miles 1523 vs,
30 Burnt branch, con, N, 19° W; at 25 miles
31 a st. md, whence a L.O. brs, S, 55³/₄° E, 5¹/₂ vs,
32 at 25 miles 395 vs, a Drain; at 25 miles

1 a st. md. at 17 miles 173 vs. the E.
2 line of the James Easley sur., 1163 vs. N 19°
3 W, from the S.E. cor. of the same and
4 769 vs. S 19° E, from a cor. of same on
5 the S. line of the Danill Stanley sur.,
6 and 181 vs. N. 19° W, from the the S.W. cor.
7 of the Jerry Arnold sur.; at 17 miles
8 147 vs a Drain; at 17 miles 729 vs. the
9 N. line of the Jerry Arnold sur., 526 vs. N 71°
10 E, from the S.W. Cor. of the same,
11 at 17 miles 1165 vs. pass 25 vs. N. 19° W,
12 from the N.W. Cor. of the W.N. Washburn
13 sur., at 17 miles 1335 vs. the Lampasas
14 and Florence Road; at 18 miles a st. md.
15 at 18 miles 51 vs. pass 13 vs. N 19° W, from
16 the N.W. cor. of the Jessie Washburn sur.,
17 and 234 vs S 19° E, from the N.E. cor. of the
18 W.N. Washburn sur.; at 18 miles 762 vs.
19 the E. line of the Jessie Washburn sur.,
20 220 vs. S 19° E, from the N.E. cor. of the same;
21 18 miles 1585 vs. the N. line of the Seaborn
22 Berry sur., 652 vs. S 19° E, from the reputed
23 N.W. cor. of the same and 335 vs. N 19° W,
24 from the S.E. Cor. of the Thos Dawson
25 sur.; at 19 miles a st. md, whence
26 a L.O. brs N 31° W, 110 vs.; at 20 miles a st.
27 md, whence a L.O. brs. N. 30 1/4° W, 83 1/2 vs., at
28 21 miles a st. md, whence a L.O. brs. S 36 1/2°
29 E 37 1/2 vs; at 21 miles 194 vs. a Drain; at
30 21 miles 561 vs. a Drain, Con. S 28° E; at 21
31 miles 794 vs. Mesquit Creek, con. N 77 1/2°
32 E; at 21 miles 1193 vs. a Drain con N 16° E

1 Drain Con. $N. 51^{\circ} E.$; at 13 miles 1779.
2 vs, a Drain con. $N. 21^{\circ} E.$ at 14 miles
3 a st. rd. whence a P.O. br $S. 60^{\circ} W. 6\frac{4}{10}$
4 vs; at 14 miles 22 vs, a Drain Con. $N. 13^{\circ}$
5 $W.$ at 14 miles 255 vs, a Drain. Con.
6 $N. 20^{\circ} E.$ at 14 miles 364 vs, a Drain
7 con. $N. 7^{\circ} E.$ at 14 mi 441 vs, the Lampasas
8 and Llano R.R. Grade, con. $S. 25\frac{1}{4} W.$
9 at 14 miles 927 vs, the N. line of the
10 Chas. K. Reese sur. 346 vs, $N. 19^{\circ} W.$
11 from the S.W. cor of the same,
12 at 14 miles 1041 vs, Pace Branch; con.
13 $N. 10^{\circ} E.$ at 14 miles 1050 vs, a Drain,
14 14 miles 1777 vs, a public road from
15 Lampasas to Llano, con. $N. 56\frac{1}{2} E.$;
16 at 15 miles a st md. whence a P.O. br
17 $N. 46\frac{1}{2} W.$ vs; at 15 miles 98 vs, the N. line
18 of the J.W. Hart sur. 957 vs, $S. 71^{\circ} W.$
19 from the N.E. cor. of said sur. and
20 1013 vs, $N. 71^{\circ} E.$ from the S.W. cor. of the
21 Ch. K. Reese sur; at 15 miles 180 vs, a
22 Drain; con. $N. 7^{\circ} W.$ at 15 miles 697 vs,
23 a Branch con. $N. 15^{\circ} E.$ at 15 miles 1111 vs,
24 the E. line of the J.W. Hart sur. 327 vs,
25 $S. 19^{\circ} E.$ from the N.E. cor of the same and
26 2595 vs, $N. 19^{\circ} W.$ from the S.W. cor. of the
27 James Casley sur; 15 miles 1180 vs, Green-
28 wood Branch; con. $N. 64^{\circ} W.$ at 16 miles
29 a st md. whence a P.O. br $N. 69\frac{3}{4} E. 9\frac{7}{10}$ vs,
30 do br, $S. 74\frac{1}{4} W. 18\frac{8}{10}$ vs, at 16 miles 472 $\frac{1}{2}$ vs,
31 pass 248 vs, $S. 19^{\circ} E.$ from the S.W. cor.
32 of the Daniel Stanley sur, at 17 miles.

1 the Esby Fork of Sulphur; at 10
2 miles a st. md, whence, a small elm
3 brs, S. 63° E, 7 7/10 vs, at 10 miles 522 vs,
4 a Drain; at 10 miles 1018 vs, the E. line
5 of the George Byerley, Sur., 1331 vs, S 16 1/2° E
6 from the N.E. cor. of the same, and
7 3961 vs, from the S.E. cor. of said Sur.
8 at 10 miles 1459 vs, a small Drain;
9 at 11 miles a st. md, whence a B.J.
10 brs, N. 13 1/4° N, 13 1/10 vs, at 11 miles 604 vs, a
11 drain; at 11 miles 1251 vs, a drain, Con-
12 S. 50° E, at 11 miles 1337 vs, a Drain; Con.
13 S. 40° N, at 11 miles 1771 vs, a Drain;
14 at 12 miles a st. md, whence, a B.J. brs,
15 N. 84, 3/4° E, 26 vs, at 12 miles 66 vs, a Drain,
16 Con, S. 60° N, at 12 miles 355 vs, a Drain,
17 Con, S.E, at 12 miles 536 vs, a Drain,
18 Con, South; at 12 miles 915 vs, a Drain
19 Con, S. 45° E; at 12 miles 1103 vs, a Drain,
20 Con, S. 40° E, at 12 miles 1225 vs, The
21 Lampasas and Leano, Enterprise Road,
22 Con, N. 61° E, at 12 miles 1395 vs, a Drain
23 Con N. 50° E, at 12 miles 1560 vs, the South
24 or Pillar Bluff Fork of Sulphur; Con,
25 N. 22° N, at 13 miles a st md, whence a
26 L.O. brs, N. 67° E, 10 7/10 vs, at 13 miles 744
27 vs, the E. line of the Joseph Squires Sur.,
28 2141 vs, N. 19° N, from, the S.E. cor. of
29 the same, and 1034 vs, N. 19° N, from
30 the S.W. cor. of the Phos. Jackson, Sur.,
31 at 13 miles 801 vs, Holy Per Branch,
32 Con, S. 35° N, at 13 miles 1518 vs, a

1 6 miles a st. md., whence a Well in the
2 E. edge of Boggy Br. brs, N 80° N, 21 $\frac{9}{10}$ vs,
3 a mesquite brs N, 57 $\frac{1}{2}$ ° E, 14 $\frac{6}{10}$ vs, at 6
4 miles 920 vs, the E. line of the J. H. Slack
5 Sur, 191 vs, South of the N.E. cor. of the
6 same, and 91 vs, N. of the N.W. cor. of the
7 J. H. Hamiter Sur, at 6 miles 1043 vs, a
8 Drain; at 6 miles 1055 vs, pass 8 $\frac{3}{10}$ vs North
9 of a Well, at 6 miles 1821 vs the West
10 line of the Chaney Williams Sur,
11 857 vs, N. 19° N. of S.W. cor. of the same
12 and 65 $\frac{7}{10}$ vs, N. 19° N. of the N.E. cor. of the
13 J. H. Hamiter Sur, at 7 miles a st. md.,
14 whence a L.O. brs, N. 57° E, 14 $\frac{2}{10}$ vs, do,
15 brs N. 59° E, 18 $\frac{6}{10}$ vs, at 7 miles 33 vs,
16 the E. line of the W. T. Gorman Sur,
17 69 vs, N. 19° N. of the S.E. cor. of the same,
18 at 7 miles 320 vs, a Drain; at 7 miles
19 376 vs, a Drain; at 7 miles 1171 vs,
20 a prong of the Sulphur, Fork of Lan-
21 pasasat River cor S, 44° E, at 8 miles
22 a st. md., in the S. edge of a road;
23 at 8 miles 555 vs, a Drain; at 8
24 miles 693 vs the S. line of the Chaney
25 Williams Sur, 2525 vs, N. 71° E, from
26 the S.W. cor. of the same, and 4019
27 vs, S. 71° N, from N.E. cor. of Byerly
28 league, at 8 miles 1355 vs, a Branch;
29 or prong of Sulphur; at 8 miles
30 1446 vs, a branch, at 9 miles a
31 st. md., whence a large double L.O.
32 brs, S, 15 $\frac{1}{2}$ ° E, 91 $\frac{2}{10}$ vs, at 9 miles 1422 vs,

850 vs. a Drain, 1820 vs. Bear Branch;
at 1 mile a stone mound mkd. B.L. I
in a shin Oak thicket; at 1 mile 519 vs
a Drain, 1 mile 691 vs a Drain; 2 miles
a st. md whence a PO brs $N. 74^{\circ} E, 17 \frac{8}{10}$ vs,
one of a bunch of Blackjacks brs $N. 86 \frac{1}{2}^{\circ}$
 $E, 18 \frac{6}{10}$ vs, at 2 miles 12 vs, a Drain, course
 $N. 35^{\circ} E$, at 2 miles 217 vs, a branch,
at 2 miles 814 vs the S. fork of Yancy
Creek, cor. $N. 21^{\circ} N$, at 2 miles 1227 vs,
the same creek, cor. $S. 55^{\circ} N$, at 2 miles
1405 vs, recross the same creek at 3
miles a st mound, whence a PO brs
 $S. 73 \frac{3}{4}^{\circ} E, 42 \frac{1}{10}$ vs, at 3 miles 1747 vs, a
Branch; at 4 miles a st md, whence
a B.J. brs $S. 18^{\circ} N, 7 \frac{6}{10}$ vs; at 4 miles 62 vs
pass 514 vs, North of the $N.E.$ cor. of the
Warren Allard sur, at 4 miles 397
vs, the $N.$ line of the James Fisher sur,
1550 $\frac{1}{2}$ vs, North of the $S.N.$ cor. of the same
and 511 vs, North of the $N.E.$ cor. of the M.J.
Estes sur, at 4 miles 432 vs, a Drain;
at 4 miles 1031 vs, a Drain; at 4 miles 1069
vs, the $N.$ line of the D. N. McBrae sur,
525 $\frac{3}{10}$ vs, North of the $S.N.$ cor of the same
at 4 miles 1772 vs, the $N.$ line of the J.
H. Slack sur, 191 vs, South of the $N.W.$
cor of the same; at 5 miles a st. md,
whence a PO brs $N. 45^{\circ} E, 9 \frac{1}{10}$ vs, at 5 miles
1077 vs, Boggy Branch, at 5 miles 1723 vs,
the Austin and San Saba Road, at 5
miles 1868 vs, recross Boggy Creek; at

1 unable to find the bearing trees called
2 for by said Harvey at the N.E. corner
3 of said Burnett County, yet from the
4 corner as made and established by
5 Chamberlain and Greenwood in 1883,
6 and adopted by me as the Northeast
7 corner of Burnett County as described
8 in field notes below, I find it
9 by actual work on the ground to be
10 S. 30° E. 5070 varas, to where the lower
11 line of the W.P. Reed Survey No. 12, cross-
12 es the Lampasas River, which agrees
13 exactly with the calls in said Harvey
14 field-notes.

15 For a more accurate description of
16 said line as run by me reference
17 is here made to the following field-
18 notes and plat.

19 Beginning at the N.W. corner of Bur-
20 nett County and the Southwest corner
21 of Lampasas County, established
22 by me in the manner above described,
23 a stone mound on the East bank of
24 the Colorado River, from which a
25 Pecan brs, S. 6½ N. 13¼ vs. an Ash brs,
26 S. 28 N. 6½ vs. a L.O. standing against a
27 Rock Bluff brs, N. 89¼ E. 74 vs. the center
28 of the mouth of Yancy Creek, brs N. 13°
29 N. 222 vs. and the N.W. corner of the A.
30 C. Chism Survey brs S. 3° E. 384½ vs.;
31 Stone mound and trees marked B.I.C.
32 Thence East at 630 vs. a deep ravine,

1 from said corner, a very old marked
2 line. (blazes with hack above and be-
3 low) finding said old marks at
4 short intervals for the entire distance
5 except the first $3\frac{1}{2}$ miles next to the
6 river as above stated. The said old
7 line as marked, is not a perfectly
8 straight line and I had to make
9 several offsets North and South to keep
10 on same. I found the distances
11 from the Colorado River to the first
12 well defined natural object called
13 for by said Harvey to be consider-
14 ably excessive. From that point
15 on, there is a little excess in most
16 of the distances over the calls made
17 by Harvey, but the agreement with the
18 calls is sufficiently exact to iden-
19 tify this as the line run by said
20 Harvey. As a further proof of this
21 being the line run by said Harvey,
22 at 24 miles 1500 vs. the calls to pass
23 same 50 varas South of an old cor-
24 ner giving bearing trees correspond-
25 ing exactly with the field-notes of the
26 E. J. Roberts 320 acres survey for its
27 Northwest corner, I find said cor-
28 ner at 26 miles and $222\frac{1}{2}$ varas, pass-
29 ing $138\frac{1}{2}$ vs. South of it instead of same
30 50 varas. This can be none other
31 than the corner called for by said
32 Harvey. And further, while I was,

1 back above and below. From here
2 to the river I found no marks made
3 by Harvey, I continued same course
4 (West) to the bank of the Colorado
5 River where I made a stone mound
6 two feet high for the North West corner
7 of Burnett County, and the South
8 West corner of Lampasas County
9 as described in field notes below,
10 $16\frac{1}{2}$ vs. North of the N.W. cor. of Burnett
11 County as established by Chamberlain
12 and Greenwood in 1883. From the
13 corner thus established by me, it is
14 384 vs. South and $20\frac{1}{2}$ vs. East to the N.
15 W. corner of the A.C. Whism Survey, same
16 being the lower or S.W. corner of the Jose
17 M. Reyna L & S. Survey as made by J. J.
18 Motley as above stated. And from
19 said corner of Burnett County as
20 just established by me it is $142\frac{1}{2}$ varas
21 South and $763\frac{3}{10}$ varas West to the upper
22 or N.W. corner of the James House Survey
23 as fixed by Motley and adopted by E.
24 Brown as above referred to. And
25 from said N.W. corner, corner of Bur-
26 net Co, as established by me it is $4079\frac{1}{10}$
27 vs South and $1289\frac{3}{10}$ varas West to the
28 lower or S.W. cor. of said House Survey
29 as made by Motley. Also referred to above.
30 Having located the Northwest corner
31 of Burnett County in the manner above
32 described, I ran the county line East

up the River the proper difference in the length of the lines can be obtained. As further proof that said survey should be located further North, the surveyor who originally made the House and Reyna surveys shows on his Plat of the same that said surveys join and they call for same kind & numbers of bearing trees at said common corner & same course and distance to them. Therefore the upper or N.W. corner of the House Survey is also the lower or S.W. corner of the Reyna Survey and they should never have been separated or pulled apart and a vacancy created between the two surveys.

I then went to a point about 5 miles East of the Colorado River and began on an old marked line known & recognized by old settlers as the county line, run by John Harvey, Deputy Surveyor of Travis County, Oct. 25th 1852, to May 8th 1853. Thence West Variation $9^{\circ} 24' E$, along a very anciently marked line - the marks being a blaze with a hack above and below as described by said Harvey in his report or field notes of said line. said old marks continue West to a point in a rocky ledge, once covered by a Cedar-brake about $3\frac{1}{2}$ miles East of the Colorado River, Here I found the last mark, a Cedar tree with very old blaze with

1 lower or S.W. corner of the said House Survey
2 as made by said Motley, where I find a well
3 defined corner and a marked line running
4 East, all about the age of the Motley Survey.
5 The bearing trees here not suiting the calls
6 of the House field notes in either course or
7 distance. I made a careful and diligent
8 search for the corners of the Reyna^d House
9 surveys on the River, but could find nothing
10 suiting the calls of the original field notes,
11 I have every reason to believe and do believe
12 that the well defined corners and anciently
13 marked lines referred to by Mr E Brown in his
14 report, as the corners and lines of the House
15 League and surveys below and upon which
16 lines^d corners he bases his arguments and
17 conclusions as to the true locality of the
18 North west corner of Burnet County were
19 made by J. J. Motley, about 18 or 19 years ago,
20 some of which lines have probably been
21 subsequently remarked by surveyors in
22 retracing. I further believe that the cor-
23 ners and lines made for the James House
24 survey by said Motley and adopted by said
25 Brown places said House Survey too far
26 South, as shown by the meanders of the
27 River. By the original field notes the South
28 line of said House Survey should be 1108 vs
29 longer than the North line of said Survey,
30 but as the survey was located by said Motley
31 the South line is only 526 vs longer than
32 the North line, By placing the survey higher

1 by John Harvey but failed to find either as
2 described in the original field notes of said
3 L. & L, or as described in John Harvey's Report
4 of the County line run by him.
5 I made a careful survey of the meanders
6 of the Colorado River from the mouth of Yancy
7 creek down the River to the S.W. or lower corner
8 of the Jose M Reyna League & Labor as fixed by
9 J. J. Motley about 18 or 19 years ago. here I find
10 L.O. bearing trees and a marked line running
11 East. The marks on the bearing trees as well
12 as the marked line appears to be about the
13 age of the said Motley work, but not suiting
14 in course or distance for the calls of the
15 original field notes of said Reyna Survey.
16 The point where Hardeeman made the
17 N.W. corner of Burnet Co when he surveyed a
18 line for the boundary between Burnet and
19 Laraparas Counties just prior to the survey
20 made by E Brown. brs S. $16\frac{1}{2}^{\circ}$ W. $30\frac{3}{10}$ or, at
21 which corner I also find L.O. bearing trees
22 newly marked but not suiting the calls in
23 the Reyna or House field notes. I continued
24 my survey down the River to the upper or
25 N.W. corner of the House Survey as made by
26 J. J. Motley and adopted by E Brown as the
27 North West corner of Burnet County in 1892.
28 Here I find no bearing trees, except a L.O.
29 newly blazed as described by said Brown in
30 his report. A marked line runs East from
31 here about the age of the said Motley work.
32 I continued my survey down the River to the

1 River as shown by the field notes of said
2 survey of John Harvey; And it is further
3 ordered that a Copy of this order be sent to
4 the County Court of Lampasas, and that
5 a copy be served upon the County Judge
6 of Lampasas County, and a copy be
7 served upon the County Clerk of Lampasas
8 County. And it is further ordered that said
9 E. J. Moses be required to give the bond and
10 take the oath prescribed by law."

11 In obedience to and compliance with the above
12 and foregoing order, I went to the North West
13 corner of Burnet County on the Colorado River
14 and was there on the 26th day of November 1894
15 where I was met by Mr V. N. Zivley, County
16 Surveyor of Lampasas County who was appo-
17 inted by the Commissioners Court of said
18 Lampasas County on the 17th day of November
19 1894 on behalf of said Lampasas County to
20 meet the Surveyor of Burnet County for the
21 purpose of investigating what said Burnet
22 County Surveyor shall do under his appoint-
23 ment and make full report to the County
24 Judge of Lampasas County &c. a copy of which
25 order is hereto attached & marked Exhibit "A,"
26 Said Zivley was on the ground with me at
27 the beginning & ending of my survey and
28 was with me from time to time during the
29 progress of the work. I made a thorough
30 search for the upper or N.W. corner of the
31 James House League & Labor also for the
32 North West corner of Burnet County as described

To the Honorable Commissioners Court
of Burnet County, Texas, January Term 1895.
Gentlemen,

I will begin this report by copying the
following order as same appears of record
on the Minutes of your Honorable Court
in Book "C" page 441. to wit:

Lampasas and Burnet Co Line,
"Whereas, it is made known to this Court
that the County of Lampasas has denied
and repudiated the existence of the County
line in the Northern portion of Burnet County
as surveyed, marked and established by John
Harvey, Deputy Surveyor of Travis County
between the 25th day of October 1852, and the
8th day of May 1853, said Lampasas County
now claiming that said line which now
separates the County of Burnet from Lam-
pasas County cannot be traced, found or
identified on the ground, Wherefore it
is ordered by the Court that E. J. Moses be
and he is hereby appointed to make a
survey of said line on the 26th day of Nov-
ember 1894 and ascertain and report to
this Court the true position and condition
of said line and particularly as it appears
on the ground, and whether the same can
be found and traced, And it is further
ordered that said E. J. Moses be and he is
hereby required to commence the survey
and tracing of the said line at the N.W.
corner of Burnet County on the Colorado

1 The State of Texas)

2 County of Burnet)

3 J. J. M. Dougherty

4 Clerk of the County

5 Court in and for said County, do hereby
6 certify that the above and foregoing is
7 a true and correct copy of the Bond and
8 Oath of E. J. Moses as Special Surveyor
9 appointed by the Commissioners Court
10 of Burnet County, to establish the line
11 between Burnet and Lampasas Counties
12 as the same appears of record in my office
13 in Bond Record pages 328nd and 329, and on
14 file in my office.

15 Witness my hand and seal of office this
16 22^d day of January 1895.

17 J. J. M. Dougherty
18 Clerk Burnet Co Texas

1 The State of Texas }
2 County of Burnet } I, Ealy J. Moses do
3 Solemnly swear that I will
4 faithfully and impartially discharge and
5 perform all the duties incumbent upon me
6 as Special Surveyor appointed by the Com-
7 missioner's Court of Burnet County on
8 October 3^d 1894 to establish boundary line be-
9 tween Lampasas and Burnet Counties
10 according to the best of my skill and ability
11 agreeably to the Constitution and laws of the
12 United States and of this State and I do
13 further solemnly swear that since the
14 adoption of the Constitution of this State,
15 I being a citizen of this State have not
16 fought a duel with deadly weapons within
17 this State nor out of it, nor have I sent or
18 accepted a Challenge to fight a duel with
19 deadly weapons nor have I acted as second
20 in carrying a Challenge or aided, advised
21 or assisted any person thus offending; and
22 I further solemnly swear that I have not
23 directly nor indirectly paid offered or prom-
24 ised to pay, contributed nor promised to con-
25 tribute, any money or valuable thing or
26 promised any public office or employment,
27 as a reward for the giving or withholding a
28 vote to secure my appointment, so help me God.

29 Ealy J. Moses
30 sworn to and subscribed before me this 15th day
31 of November AD 1894. J. M. Dougherty
32 Clerk Burnet Co Texas

Seal

1 The State of Texas)
 2 County of Burnet) know all men by
 3 these presents that we
 4 Ealy J Moses as Principal and Norton Moses
 5 and H.C. Whitney as sureties are held and
 6 firmly bound unto J. A. Crews as County
 7 Judge of Burnet County, Texas, an his
 8 successors in office in the full sum of
 9 One Thousand Dollars, for the payment of
 10 which we hereby bind ourselves our heirs,
 11 executors and administrators firmly by
 12 these presents.

13 The condition of the above obligation is such
 14 that whereas the above bounden Ealy J Moses
 15 was on the 3^d day of October 1894, appointed
 16 by the County Commissioners Court of Burnet
 17 County as Surveyor to represent Burnet County
 18 in the location of the boundary line between
 19 Burnet and Lampasas Counties, Now if the
 20 said Ealy J Moses, shall faithfully perform
 21 the duties required of him by law, by virtue
 22 of said appointment, then this obligation shall
 23 be null and void, otherwise the same shall be
 24 in full force and effect.

25 Witness our hands this the 15th day of November
 26 A.D. 1894 Ealy J Moses
 27 Filed Nov. 15th - 1894 Norton Moses
 28 J.M. Dougherty, Clerk H.C. Whitney

29 Approved in open Court Nov. 15th - 1894
 30 J. A. Crews, County Judge Burnet Co
 31 H. A. Burrus - Com: Precinct #1 " "
 32 W. S. Dillingham " " #2 " "
 R. P. Ray " " #3 " "
 A. L. Eskew " " #4 " "

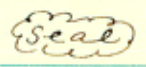
1 The State of Texas }
2 County of Burnet } J. J. M. Dougherty
3 County Clerk in and
4 for said County do hereby certify that the
5 above and foregoing are true and correct
6 copies two notices and returns thereon
7 now on file in my office.
8 Witness my hand and seal of office the
9 22nd day of January 1895.
10 J. J. M. Dougherty County
11 Clerk Burnet County Texas

The State of Texas

To the Sheriff or any constable of Lampasas
County Texas.

You are hereby commanded to deliver to the
County Clerk of Lampasas County Texas the
accompanying certified copy of an order of the
County Commissioners Court of Burnet County
Texas made on the 3rd day of October 1894 relative
to the boundary line between Burnet and Lam-
pasas County and you will make due
return of this notice on or before the 12th day
of November 1894 showing how and when you
executed this notice.

Herein fail not but due return make as
above set forth.

Witness my hand and seal of office this 19th
day of October 1894. J. M. Dougherty
 Clerk Burnet Co. Texas

Came to hand on the 22^d day of October 1894 at 2³⁰
o'clock PM and executed on the 22^d day of October
1894 at 2³⁵ o'clock PM by delivering to J. P. Baugh
County Clerk of Lampasas County Texas the
accompanying certified copy of an order of the
County Commissioners Court of Burnet County
Texas made on the 3^d day of October 1894 relative
to the boundary line between Burnet and
Lampasas County.

By E. H. Wolf Deputy W. R. Wren Sheriff
of Lampasas County
Texas

Filed Oct. 24-1894

J. M. Dougherty
Clerk Co Burnet Co Tex. By C. L. Hendley - Dpty

The State of Texas

To the Sheriff or any constable of Lampasas
County Texas

You are hereby commanded to deliver
to the County Judge of Lampasas County
Texas, the accompanying certified copy of an
order of the County Commissioners Court
of Burnet County, Texas, made on the 3rd
day of October 1894, relative to boundary
line between Burnet and Lampasas
County, and you will make due return
of this notice on or before the 12th day of
November 1894 showing how and where
you executed this notice

Herein fail not but due return make as
above set forth.

Witness my hand and seal of office this 19th
day of October 1894 - J. M. Dougherty
Clerk Burnet Co Texas



Came to hand on the 22nd day of October 1894, at
2³⁰ o'clock P.M., and executed on the 22nd day of
October 1894, at 2³⁵ o'clock P.M., by delivering
to N. F. Meeks County Judge of Lampasas
County, Texas, the accompanying certified
copy of an order of the County Commissioners
Court of Burnet County, Texas, made on the
3rd day of October 1894, relative to the boundary
line between Burnet and Lampasas County

W. R. Wren, Sheriff
Lampasas County, Texas

By C. N. Wolf

Deputy.

Filed, Oct 24 1894

J. M. Dougherty
Clerk Burnet Co

1 and particularly as it appears on the ground
2 and whether the same can be found and
3 traced. And it is further ordered that
4 said E. J. Moses be and he is hereby required
5 to commence the survey and tracing of
6 the said line at the N.W. corner of Burnet
7 County on the Colorado River as shown by
8 the field notes of said survey of John Harvey.
9 And it is further ordered that a copy of
10 this order be sent to the County Court of
11 the County of Lampasas, and that a copy
12 be served upon the County Judge of
13 Lampasas County, and a copy be served
14 upon the County Clerk of Lampasas County.
15 And it is further ordered that said E. J. Moses
16 be required to give the bond and take the
17 oath prescribed by law.

18 The State of Texas }
19 County of Burnet } J. J. M. Dougherty County
20 Clerk in and for said County
21 do hereby certify that the above and foregoing
22 is a true and correct copy of an order of the
23 County Commissioners Court of Burnet County
24 regarding the survey and tracing of Burnet
25 and Lampasas County line as same appears
26 on the Minutes of said Court in Vol "C"
27 pages 441nd and 442, on the 3rd day of October 1894.
28 Witness my hand and seal of office this
29 22^d day of January 1895.
30 J. J. M. Dougherty
31 Co Clerk Burnet Co Texas
32

1 The State of Texas }
2 County of Burnet } Be it remembered
3 that on this the 1st day of October A.D. 1894
4 there was begun and holden a Special Term
5 of the Hon. Commissioners Court of Burnet
6 County, Texas at the Court House in Burnet
7 said state and County. Present Hon. J. A.
8 Crews, County Judge of said Burnet County,
9 presiding, H. A. Burns, W. S. Dillingham
10 R. P. Ray and A. L. Askew County Commission-
11 ers, C. Dorbaudt Sheriff and J. M. Dougherty
12 clerk of said County, and among other
13 proceedings had, the following order was
14 made, to wit:

15 October 3rd 1894

16 Whereas it is made known to this Court
17 that the County of Lampasas has denied and
18 repudiated the existence of the County line
19 in the Northern portion of Burnet County
20 as surveyed marked and established by John
21 Harvey, Deputy Surveyor of Travis County,
22 between the 25th day of October 1852 and the
23 8th day of May 1853. Said Lampasas County
24 now claiming that said line which now
25 separates the County of Burnet from Lam-
26 pasas County cannot be traced, found or
27 identified on the ground. Wherefore it is
28 ordered by the Court that E. J. Moses be and
29 he is hereby appointed to make a survey of
30 said line on the 16th day of November 1894
31 and ascertain and report to this Court the
32 true position and condition of said line

Handwritten notes:
176
177
178
179
180

2
3
4
5
6
7
8
9
10
11
12
13
14
15
16
17
18
19
20
21
22
23
24
25
26
27
28
29
30
31
32