

RECEIVED  
OCT 28 1959  
General Land Office

THE STATE OF TEXAS X  
                                  X  
COUNTY OF CALHOUN X

ON THIS, the 12th day of October, 1959, at the Regular Term of the Commissioners Court, with all members of the Court being present, there came before the Court the following resolution:

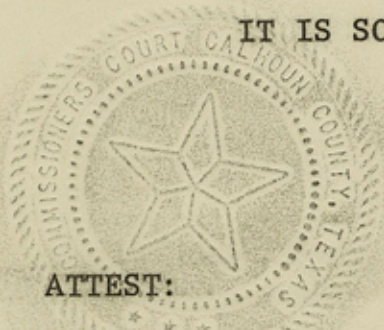
WHEREAS, by joint agreement of the Commissioners Courts of Jackson and Calhoun Counties, the County Surveyor of each County was authorized and instructed to make a joint survey of the common boundary line of Calhoun and Jackson Counties along their common boundary line out in the waters of Carancahua Bay, employing the Texas Lambert Grid Coordinates, and establishing fixed monuments upon the shore in order to permanently mark such boundary and the location thereof; and that they be correlated with the State Drilling Blocks for mineral development within said Bay; and,

VOL 156 PAGE 261

WHEREAS, such work has been performed and formally accepted by orders of both Courts,

THEREFORE, the County Clerk of Calhoun County is hereby authorized and instructed to prepare certified copies of such record and plat which shall be filed in the Deed Records of Calhoun County, Texas, and forwarded to the General Land Office for record in that office of this common boundary line agreement.

IT IS SO ORDERED.



ATTEST:

Howard G. Hartzog  
Howard G. Hartzog, County Judge,  
Calhoun County, Texas

Maurice G. Wood  
Maurice G. Wood, County Clerk,  
Calhoun County, Texas

Motion was made by Commissioner Wedig that the Above resolution be adopted. Commissioner Barton seconded the motion and it was unanimously carried.



CERTIFICATE OF TRUE COPY OF PAPER OF RECORD

STATE OF TEXAS  
County of Calhoun

MAURICE G. WOOD

COUNTY

Clerk of the \_\_\_\_\_ Court  
of Calhoun County, Texas, do hereby certify that the foregoing is a true and correct copy of the original  
**ORDER APPROVING BOUNDARY LINE OF CALHOUN AND JACKSON COUNTIES**

VOL 156 PAGE 262

as the same appears of record in my office, in the \_\_\_\_\_ **COMMISSIONERS COURT** \_\_\_\_\_ Records of said  
County, in Vol. **K**, page **266 et seq.**

Given under my hand and seal of said Court, at office in Port Lavaca, this the **12** day of  
**OCTOBER**, A. D. 19 **59**

**MAURICE G. WOOD**

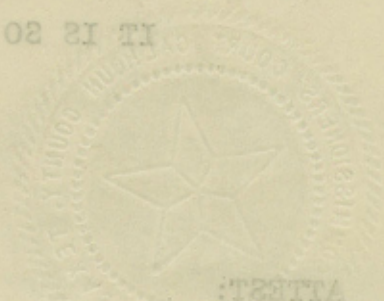
Clerk, \_\_\_\_\_ **COUNTY** \_\_\_\_\_ Court, Calhoun County, Texas  
By *Wava Schlieing*, Deputy

of Jackson and Calhoun Counties, the County Surveyor of each  
County was authorized and instructed to make a joint survey of the  
common boundary line of Calhoun and Jackson Counties along their  
common boundary line out in the waters of Caranacas Bay, employing  
the Texas Lambert Grid Coordinates, and establishing fixed monuments  
upon the shore in order to permanently mark such boundary and the  
location thereof; and that they be correlated with the State  
Drilling Blocks for mineral development within said Bay; and,  
WHEREAS, such work has been performed and formally  
accepted by orders of both Courts  
THEREFORE, the County Clerk of Calhoun County is hereby  
authorized and instructed to prepare certified copies of such  
record and plat which shall be filed in the Deed Records of Calhoun  
County, Texas, and forwarded to the General Land Office for record  
in that office of this common boundary line agreement.

100310 027 101

IT IS SO ORDERED.

*Howard G. Hartzog*  
Howard G. Hartzog, County Judge,  
Calhoun County, Texas



*Maurice G. Wood*  
Maurice G. Wood, County Clerk,  
Calhoun County, Texas

Motion was made by Commissioner Wedig that the above resolution  
be adopted. Commissioner Barton seconded the motion and it was  
unanimously carried.

Calhoun Co Bary File No 4



REPORT OF SURVEY OF JACKSON-CALHOUN COUNTY LINE THROUGH  
CARANCAHUA BAY.

TO: HON. COMMISSIONERS COURTS OF CALHOUN AND JACKSON COUNTIES.

Pursuant to instructions received from the Calhoun County Commissioners Court and the Jackson County Commissioners Court, Charles W. Hodges, the undersigned County Surveyor of Calhoun County and Mr. R. J. Bryant County Surveyor of Jackson County, met at the accepted corner of Jackson and Calhoun Counties at the Northeast corner of the James Hughson Survey, Calhoun County, Texas on December 14, 1951, and after the swearing in of chainmen, Larry Trevino, Jim Smith, Johnie Skoruppa and J. P. Skoruppa, according to Law, proceeded to run out the County line along the North boundary line of said James Hughson Survey to its terminus on the bank of Carancahua Bay.

From the terminus of said North line of James Hughson Survey on Carancahua Bay the meanders of the Shore up Carancahua Bay were Surveyed to a point opposite and across the Bay on an extension of the Northeast boundary line of the Sam Houston Survey, Calhoun County, Texas, THENCE by Triangulation the course and distance across the Bay to the Northeast corner of said Sam Houston Survey was calculated. THENCE the meanders of the Shore down Carancahua Bay were surveyed to a point opposite and across the Bay from the aforesaid terminus on Carancahua Bay of the North line of the James Hughson Survey, From the data thus obtained the area of Carancahua Bay was Calculated in order that it might be possible to ascertain what would constitute an approximate equal division of Area to each County, as tentatively authorized by the Minutes of the Commissioners Courts of the respective Counties.

The idea of running a line which would be equidistant between the two shores was explored and found to be impractical, as such a line could not be permanently fixed and would be variable as the erosion of or the accretion to shore lines occurred.

The advise and assistance of the General Land office of Texas was solicited, and it was pointed out to us that the submerged areas were already subdivided by the State of Texas into Drilling Blocks, and that the boundaries of

RECEIVED  
OCT 28 1959

General Land Office



such Drilling Blocks could be located by the use of Plane Coordinates of the Texas Lambert Grid System, and that in order to get an agreed boundary line placed on Official Maps, that it would be necessary to use Grid Coordinates on the corners and terminus points of such agreed boundary line.

After calculations and consideration between your Surveyors the division of Carancahua Bay by the line as hereinafter described and as shown on the Plat accompanying this report was agreed upon as the dividing line, which we would report to our respective commissioners Courts as being the most logical and Practical boundary line to be arrived at, which would place about equal areas in each County, could be permanently fixed and could be accurately mapped.

The determination of the Lambert Grid System Coordinates required by this line was undertaken as a joint project by your Surveyors, but we soon discovered that we were faced with the problem that certain U. S. Coast and Geodetic Survey Triangulation Stations had been destroyed or had become so surrounded by houses as to be not usable. For instance, the radio Tower at Camp Hulen was given as one Triangulation point, and this had long since taken down; another point was the cupola of the old Houston Club building at Carancahua Beach, which was destroyed by fire some years ago; another was Triangulation Station "Slaiku" which is under a wooden fence in a cow lot now and cannot be occupied.

Letters were written to the U. S. Coast and Geodetic Survey notifying them of the situation and requesting replacement of these stations and the establishment of new ones nearer to the desired points.

Your Surveyor decided that since it was impractical at the time to complete our work, that we would suspend the work until such time as it could be completed. Mr. Bryant soon afterwards became ill and died before any resumption of work.

After several years the U. S. Coast and Geodetic Survey made available certain new information and the General Land Office of Texas obtained new data which became available, so that at long last the required coordinates have been secured and proven. Monuments have been placed as indicated in the

RECEIVED  
OCT 28 1959  
General Land Office



Field notes below, and this report is now submitted to both courts for final approval.

We found that the Act of the Legislature dated April 4, 1846 creating Calhoun County out of Victoria, Jackson and Matagorda Counties defined in part the boundary between Jackson and Calhoun Counties as follows: "THENCE, along its (James Hughson Survey)" northern line to its termination on Carancahua Bay; "THENCE up said Bay, with its meanders, to the North-eastern corner of a survey made for Sam Houston, on the West side of said Bay" (Gammel, H. P. N., LAWS OF TEXAS, Vol. II, page 1354, and such boundary definition is inconclusive and subject to more than one determination, it is recommended that the above quoted portion of the description of the Jackson-Calhoun County boundary line be Amended by Concurring Resolution of the respective Commissioners Courts to read as follows:

THENCE (from the Northeast corner of James Hughson Survey, Calhoun County Texas, said corner having an X value of 2,858,236.49 and a Y value of 315,983.77 Lambert Coordinates) S. 88 deg. 39' 00" .38 W., Grid Bearing with the northern boundary line of James Hughson Survey a distance of 25,808.10 feet to a point in the common boundary line of State Drilling Blocks Nos. 240 & 223 which said point has an X value of ~~2,832,435.38~~ <sup>2,832,435.38</sup> and a Y value of 315,375.70 for a County line corner,

THENCE N. 01 deg. 20' 59" .62 W. with the common boundary line between State Drilling Blocks Nos. 223 and 240, 224 and 257, 225 and 258 and 259, a distance of 5,736.6 feet to the Northeast corner of State Drilling Block No. 225, for corner of the County Line, said corner having an X value of 2,832,300.25 and a Y value of 321,110.72.

THENCE N. 88 deg. 39' 00" .38 E., with the common boundary line between State Drilling Blocks Nos. 239 and 259 a distance of 1320 feet to a point on said line having an X value of 2,833,619.88 and a Y value of 321,141.81 for a corner of County Line,

THENCE N. 01 deg. 20' 59" .62 W., through the center of Drilling Blocks Nos. 239, 238, 237, 236, 235, and with the common line between Drilling Blocks Nos. 233 and 234, a distance of 14,520 feet to a point in the common boundary line between

RECEIVED  
OCT 28 1959

General Land Office

VOL 156 PAGE 265



~~then~~ Drilling Blocks Nos. 233 and 234, having an X value of 2,833,277.80 and a Y value of 335,657.80 for a corner of County Line,

THENCE S. 88 deg. 39' 00" .38 W., across State Drilling Blocks Nos. 233 and 232, a distance of 2640 feet to a point in the common boundary line between Drilling Blocks Nos. 231 and 232, having an X value of 2,830,638.54 and a Y value of 335,595.57 for a corner of County Line,

THENCE S. 32 deg. 20' 27" W. through Drilling Blocks Nos. 231, 230, 207, and 208, a distance of 7,139.00 feet to a point in the common boundary line between Drilling Blocks Nos. 205 and 208 having an X value of 2,826,819.57 and a Y value of 329,563.96 for a corner of County Line,

THENCE S. 88 deg. 39' 00" .38 W. across Drilling Block No. 205, a distance of 2640 feet to a point in the common boundary line between Drilling Blocks Nos. 202 and 205, having an X value of 2,824,180.31 and a Y value of 329,501.78 for a corner of County Line,

VOL 156 PAGE 266

THENCE S. 01 deg. 20' 59" .62 E., with the common boundary line between Drilling Blocks Nos. 202 and 205, 203 and 204, a distance of 2,781.30 feet, to a point on the shore line of Carancahua Bay marked by a 2 inch galvanized pipe, having an X value of 2,824,245.84 and a Y value of 326,721.25.

THENCE Eastwardly S. 73 deg. 34' 50" E. with the shore line of Carancahua Bay a distance of 110.64 feet to an iron rod at end of fence, at the Northeast corner of Sam Houston Survey, Calhoun County, Texas, said iron rod having an X value of 2,824,352.99 and a value of 326,693.70.

THENCE S. 2 deg. 22' 11" E., with the Sam Houston Survey Boundary line a distance of 1,327.65 feet to a concrete block in ground under gate in center of roadway, said point having an X value of 2,824,407.89 and a Y value of 325,366.16.

Respectfully Submitted.

Charles W. Hodges  
Charles W. Hodges, County Surveyor,  
Calhoun County, Texas.

RECEIVED

OCT 28 1959

General Land Office



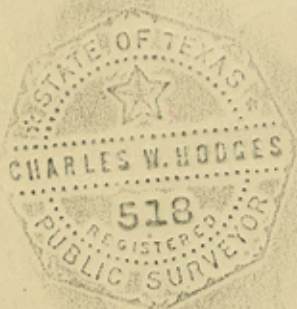
RECEIVED

OCT 28 1959

General Land Office

This is to certify that I, Charles W. Hodges, County Surveyor, Calhoun County, Texas, and State of Texas Registered Public Surveyor No. 518, did actually enter upon the ground around Carancahua Bay in Jackson and Calhoun Counties and with the assistance of Larry Trevino, Jim Smith, Johnnie Shoruppa, J. P. Skoruppa, Pete Trevino and Nieves Garcia, chainmen; and C. G. Warren, Instrument man did survey the above described Calhoun-Jackson County boundary line between the date of December 14, 1951 and January 26th, 1959; and the accompanying Plat is a true representation of the Surveyed Boundary line.

January 26, 1959



*Charles W. Hodges*

CHARLES W. HODGES, COUNTY SURVEYOR, CALHOUN COUNTY TEXAS, REGISTERED PUBLIC SURVEYOR NO. 518.

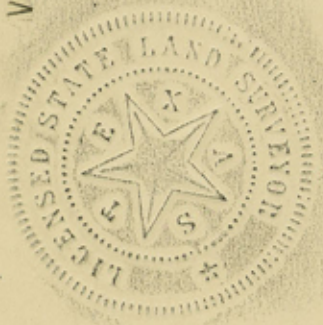
This is to certify that I, Albert H. Clayton did actually enter upon the ground and verify by field work and by computation the coordinates given above for the various County Boundary Line corners.

January 26, 1959.

VOL 156 PAGE 267

*Albert H. Clayton*

Albert H. Clayton, Licensed State Land Surveyor.



Aforementioned attached Plat recorded in Volume Z Page 348 of the Plat Records of Calhoun County.

THE STATE OF TEXAS }  
COUNTY OF CALHOUN }

I, MAURICE G. WOOD, County Clerk in and for said County, do hereby certify that the foregoing instrument, dated the 6 day of October, 19 59, was its certificate of authentication, was filed for record in my office, on the 12 day of October, A.D. 19 59, at 3:30 o'clock P. M., and duly recorded the 14 day of October, A.D. 19 59, at 10:07 o'clock A. M., in the Deed Records in said County, in Vol. 156, on page 256-267.

Witness my hand and seal of the County Court of said County, at office in Port Lavaca, Texas, the day and year last above named.

MAURICE G. WOOD  
Clerk, County Court, Calhoun County

By *Wava Schlessing*, Deputy



## EXHIBIT "B"

## REPORT OF SURVEY OF JACKSON-CALHOUN COUNTY LINE THROUGH CARANCAHUA BAY.

To: HON. COMMISSIONERS COURTS OF CALHOUN AND JACKSON COUNTIES.

Pursuant to instructions received from the Calhoun County Commissioners Court and the Jackson County Commissioners Court, Charles W. Hodges, The undersigned County Surveyor of Calhoun County and Mr. R. J. Bryant County Surveyor of Jackson County, met at the accepted corner of Jackson and Calhoun Counties at the Northeast corner of the James Hughson Survey, Calhoun County, Texas on December 14, 1951, and after the swearing in of chairmen, Larry Trevino, Jim Smith, Johnie Skoruppa and J. P. Skoruppa, according to Law, proceeded to run out the County line along the North boundary line of said James Hughson Survey to its terminus on the bank of Carancahua Bay.

From the terminus of said North line of James Hughson Survey on Carancahua Bay the meanders of the Shore up Carancahua Bay were Surveyed to a point opposite and across the Bay on an extension of the Northeast boundary line of the Sam Houston Survey, Calhoun County, Texas, Thence by Triangulation the course and distance across the Bay to the Northeast corner of said Sam Houston Survey was calculated. THENCE the meanders of the Shore down Carancahua Bay were surveyed to a point opposite and across the Bay from the aforesaid terminus on Carancahua Bay of the North line of the James Hughson Survey, From the data thus obtained the area of Carancahua Bay was Calculated in order that it might be possible to ascertain what would constitute an approximate equal division of Area to each County, as tentatively authorized by the Minutes of the Commissioners Courts of the respective Counties.

The idea of running a line which would be equidistant between the two shores was explored and found to be impractical, as such a line could not be permanently fixed and would be variable as the erosion of or the accretion to shore lines occurred.

The advise and assistance of the General Land Office of Texas was solicited, and it was pointed out to us that the submerged areas were already sub-divided by the State of Texas into Drilling Blocks, and that the boundaries of such Drilling Blocks could be located by the use of Plane Coordinates of the Texas Lambert Grid System, and that in order to get an agreed boundary line placed on Official Maps, that it would be necessary to use Grid Coordinates on the corners and terminus points of such agreed boundary line.

After calculations and consideration between your Surveyors the division of Carancahua Bay by the line as hereinafter described and as shown on the Plat accompanying this report was agreed upon as the dividing line, which we would report to our respective commissioners Courts as being the most logical and Practical boundary line to be arrived at, which would place about equal areas in each County, could be permanently fixed and could be accurately mapped.

The determination of the Lambert Grid System Coordinates required by this line was undertaken as a joint project by your Surveyors, but we soon discovered that we were faced with the problem that certain U. S. Coast and Geodetic Survey Triangulation Stations had been destroyed or had become so surrounded by houses as to be not usable. For instance, the radio Tower at Camp Hulen was given as one Triangulation point, and this had long since taken down; another point was the cupola of the old Houston Club building at Carancahua Beach, which was destroyed by fire some years ago; another was Triangulation Station "Slaiku" which is under a wooden fence in a cow lot now and cannot be occupied.

Letters were written to the U. S. Coast and Geodetic Survey notifying them of the situation and requesting replacement of these stations and the establishment of new ones.



69118

69118

Upon motion of Commissioner Gayle and second by Commissioner Porche, the Court voted to approve as the boundary line between Jackson and Calhoun Counties field notes prepared by Hodges & Bryan calling for the middle of Carancahua Bay as said boundary line.



nearer to the desired points.

Your Surveyor decided that since it was impractical at the time to complete our work, that we would suspend the work until such time as it could be completed. Mr. Bryant soon afterwards became ill and died before any resumption of work.

After several years the U. S. Coast and Geodetic Survey made available certain new information and the General Land Office of Texas obtained new data which became available, so that at long last the required coordinates have been secured and proven. Monuments have been placed as indicated in the Field Notes below, and this report is now submitted to both courts for final approval.

We found that the Act of the Legislature dated April 4, 1846 creating Calhoun County out of Victoria, Jackson and Matagorda Counties defined in part the boundary between Jackson and Calhoun Counties as follows: "THENCE, along its (James Hughson Survey)" northern line to its termination on Carancshua Bay: "THENCE up said Bay, with its meanders, to the North-eastern corner of a survey made for Sam Houston, on the west side of said Bay"(Gammel H. P. N., Laws Of Texas, Vol. 11, page 1354, and such boundary definition is inconclusive and subject to more than one determination, it is recommended that the above quoted portion of the description of the Jackson-Calhoun County boundaryline be Amended by Concurring Resolution of the respective Commissioners Courts to read as follows:

THENCE (from the Northeast corner of James Hughson Survey, Calhoun County Texas, said corner having an X value of 2,858,236.49 and a Y value of 315,983.77 Lambert Coordinates) S. 88 deg. 39' 00" .38 W., Grid Bearing with the northern boundary line of James Hughson Survey a distance of 25,808.10 feet to a point in the common boundary line of State Drilling Blocks Nos. 240 & 223 which said point has an X value of 2,832,435.38 and a Y value of 315,375.70 for a County line corner,

THENCE N 01 deg. 20' 59" .62W. with the common boundary line between State Drilling Blocks Nos. 223 and 240, 224 and 257, 225 and 258 and 259, a distance of 5,736.6 feet to the Northeast corner of State Drilling Block No. 225, for corner of the County Line, said corner having an X value of 2,832,300.25 and a Y value of 321,110.72.

THENCE N.88 deg. 39' 00" .38 E., with the common boundary line between State Drilling Blocks Nos. 239 and 259 a distance of 1320 feet to a point on said line having an X value of 2,833,619.88 and a Y value of 321,141.81 for a corner of County Line,

THENCE N. 01 deg. 20' 59" .62W., through the center of Drilling Blocks Nos. 239, 238, 237, 236, 235, and with the common line between Drilling Blocks Nos. 233 and 234, a distance of 14,520 feet to a point in the common boundary line between Drilling Blocks Nos. 233 and 234, having an X value of 2,833,277.80 and a Y value of 335,657.80 for a corner of County Line,

THENCE S.88 deg. 39' 00" .38 W., across State Drilling Blocks Nos. 233 and 232, a distance of 2640 feet to a point in the common boundary line between Drilling Blocks Nos. 231 and 232, having an X value of 2,830,638.54 and a Y value of 335,595.57 for a corner of County Line,

THENCE S.32 deg 20' 27" W. through Drilling Blocks Nos. 231,230,207, and 208, a distance of 7,139.00 feet to a point in the common boundary line between Drilling Blocks Nos. 205 and 208 having an X value of 2,826,819.57 and a Y value of 329,563.96 for a corner of County Line,

THENCE S.88 deg. 39' 00" .38 W. across Drilling Block No. 205, a distance of 2640 feet to a point in the common boundary line between Drilling Blocks Nos. 202 and 205, having an X value of 2,824,180.31 and a Y value of 329,501.78 for a corner of County Line,

THENCE S.01 deg. 20' 59" .62 E., with the common boundary line between Drilling



Blocks Nos. 202 and 205, 203 and 204, a distance of 2,781.30 feet, to a point on the shore line of Carancahus Bay marked by a 2 inch galvanized pipe, having an X value of 2,824,245.84 and a Y value of 326,721.25.

THENCE Eastwardly S. 73 deg. 34' 50" E. with the shore line of Carancahua Bay a distance of 110.64 feet to an iron rod at end of fence, at the Northeast corner of Sam Houston Survey, Calhoun County, Texas, said iron rod having an X value of 2,824,352.99 and a Y value of 326,693.70,

THENCE S. 2 deg. 22' 11" E., with the Sam Houston Survey Boundary line a distance of 1,327.65 feet to a concrete block in ground under gate in center of roadway, said point having an X value of 2,824,407.89 and a Y value of 325,366.16.

Respectfully Submitted.

/s/ Charles W. Hodges  
Charles W. Hodges, County Surveyor  
Calhoun County, Texas.

This is to certify that I, Charles W. Hodges, County Surveyor, Calhoun County, Texas and State of Texas Registered Public Surveyor No. 518, did actually enter upon the ground around Carancahus Bay in Jackson and Calhoun Counties and with the assistance of Larry Trevino, Jim Smith, Johnnie Shoruppa, J. P. Skoruppa, Pete Trevino and Nieves Garcia, chairmen; and C. G. Warren, Instrument man did survey the above described Calhoun-Jackson County boundary line between the date of December 14, 1951 and January 26th, 1959; and the accompanying Plat is a true representation of the Surveyed Boundary line, January 26, 1959.

L. S.

/s/ Charles W. Hodges  
CHARLES W. HODGES, COUNTY SURVEYOR, CALHOUN CO.  
TEXAS, REGISTERED PUBLIC SURVEYOR NO. 518

This is to certify that I, Albert H. Clayton did actually enter upon the ground and verify by field work and by computation the coordinates given above for various County Boundary Line Corners.

January 26, 1959.

/s/ Albert H. Clayton  
Albert H. Clayton, Licensed State Land Surveyor.

L. S.

Calhoun Co. Bdry. Line # 4



OCT 28 1959

General Land Office

VOL 156 PAGE 260

THE STATE OF TEXAS     |  
COUNTY OF JACKSON     |

I, WAYNE MYERS, County Clerk in and for Jackson County, Texas, hereby certify that the above and foregoing is a true and correct copy of an Order and Exhibit entered in the Minutes of the Commissioner's Court of Jackson County, Texas dated April 15, 1959 and is of record in Volume M, Pages 276-279 of the Commissioner's Court Minutes of Jackson County, Texas.

WITNESS MY HAND AND SEAL OF OFFICE, this the 6 day of October  
A. D. 1959.

WAYNE MYERS, COUNTY CLERK  
JACKSON COUNTY, TEXAS

BY Martha Knapp Deputy



Calhoun Co Bdry File No 4

69118

CERTIFIED COPY OF

COMMISSIONER'S COURT

MINUTES of Jackson County

20,

The Public.

156-256-267

10-6-59  
FILED FOR RECORD  
AT 3:30 O'CLOCK P M

OCT 12 1959

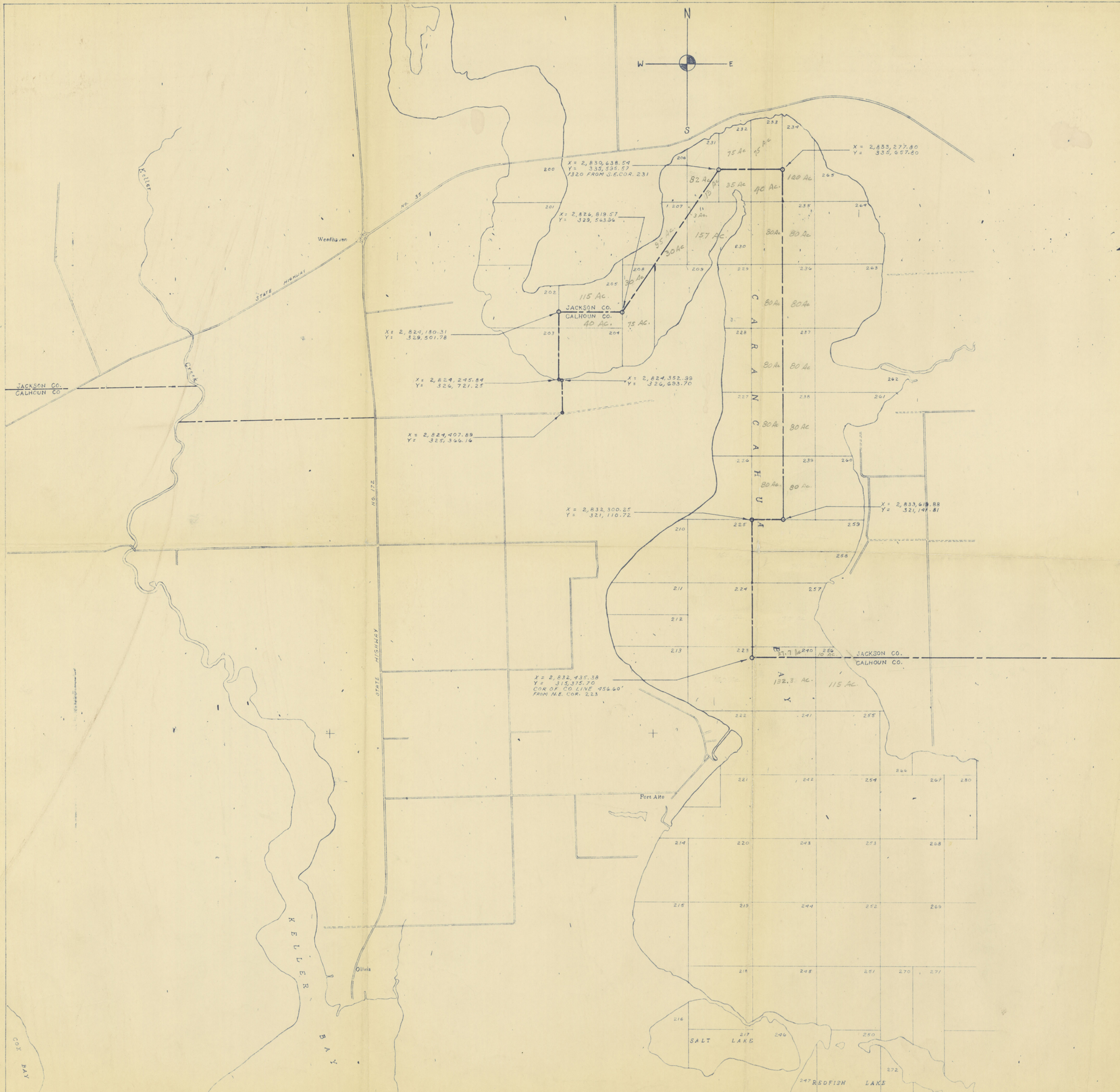
MAURICE G. WOOD  
COUNTY CLERK, CALHOUN COUNTY, TEXAS

BY *J. Ann Criss* DEPUTY

WAYNE MYERS  
COUNTY CLERK, JACKSON COUNTY  
EDNA, TEXAS

Counter 50991





Calhoun Co. Bdy line 87

69118

APPROVED IN OPEN COURT  
this 17<sup>th</sup> day of October 1959  
For Record  
Maurice G. Wood  
Providing Officer, Commissioners Court  
Calhoun County, Texas

FILED FOR RECORD  
AT 3:30 O'CLOCK P.M.

OCT 12 1959

MAURICE G. WOOD  
COUNTY CLERK, CALHOUN COUNTY, TEXAS  
By *Helen Schilling* DEPUTY

CHARLES W. HODGES  
COUNTY SURVEYOR, PORT LAVACA,  
CALHOUN COUNTY, TEXAS  
SURVEYED 14, DEC. 1951 TO 24 JAN. 1959  
DRAWN BY

SURVEYED BY *Charles W. Hodges*  
REGISTERED PUBLIC SURVEYOR, NO. 578

SCALE 1" = 2000'







RECEIVED

JAN 14 1960

General Land Office

AMENDED FIELD NOTES OF CALHOUN-JACKSON COUNTY BOUNDARY  
LINE THROUGH CARANCAHUA BAY ACCEPTED BY COMMISSIONERS  
COURT OF JACKSON AND CALHOUN COUNTIES.

TO: HON. COMMISSIONERS COURTS OF CALHOUN AND JACKSON COUNTIES.

D-863  
Pursuant to instructions received from the Calhoun County Commissioners Court and the Jackson County Commissioners Court, Charles W. Hodges, the undersigned County Surveyor of Calhoun County and Mr. R. J. Bryant County Surveyor of Jackson County, met at the accepted corner of Jackson and Calhoun Counties at the Northeast corner of the James Hughson Survey, Calhoun County, Texas, on December 14, 1951, and after the swearing in of chainmen, Larry Trevino, Jim Smith, Johnie Skoruppa and J. P. Skoruppa, according to Law, proceeded to run out the County line along the North boundary line of said James Hughson Survey to its terminus on the bank of Carancahua Bay.

From the terminus of said North line of James Hughson Survey on Carancahua Bay the meanders of the Shore up Carancahua Bay were Surveyed to a point opposite and across the Bay on an extension of the Northeast boundary line of the Sam Houston Survey, Calhoun County, Texas, THENCE by Triangulation the course and distance across the Bay to the Northeast corner of said Sam Houston Survey was calculated. THENCE the meanders of the Shore down Carancahua Bay were surveyed to a point opposite and across the Bay from the aforesaid terminus on Carancahua Bay of the North line of the James Hughson Survey. From the data thus obtained the area of Carancahua Bay was Calculated in order that it might be possible to ascertain what would constitute an approximate equal division of Area to each County, as tentatively authorized by the Minutes of the Commissioners Courts of the respective Counties.

The idea of running a line which would be equidistant between the two shores was explored and found to be impractical, as such a line could not be permanently fixed and would be variable as the erosion of or the accretion to shore lines occurred.

The advise and assistance of the General Land Office of Texas was solicited, and it was pointed out to us that the submerged areas were already subdivided by the State of Texas into Drilling Blocks, and that the boundaries of such Drilling Blocks could be located by the use of Plane Coordinates of the Texas Lambert Grid System, and that in order to get an agreed boundary line



placed on Official Maps, that it would be necessary to use Grid Coordinates on the corners and terminus points of such agreed boundary line.

After calculations and consideration between your Surveyors the division of Carancahua Bay by the line as hereinafter described and as shown on the Plat accompanying this report was agreed upon as the dividing line, which we would report to our respective commissioners Courts as being the most logical and Practical boundary line to be arrived at, which would place about equal areas in each County, could be permanently fixed and could be accurately mapped.

The determination of the Lambert Grid System Coordinates required by this line was undertaken as a joint project by your Surveyors, but we soon discovered that we were faced with the problem that certain U. S. Coast and Geodetic Survey Triangulation Stations had been destroyed or had become so surrounded by houses as to be not usable. For instance, the radio Tower at Camp Hulen was given as one Triangulation point, and this had long since taken down; another point was the Cupola of the old Houston Club Building at Carancahua Beach, which was destroyed by fire some years ago; another was Triangulation Station "Slaiku" which is under a wooden fence in a cow lot now and cannot be occupied.

Letters were written to the U. S. Coast and Geodetic Survey notifying them of the situation and requesting replacement of these stations and the establishment of new ones nearer to the desired points.

Your Surveyor decided that since it was impractical at the time to complete our work, that we would suspend the work until such time as it could be completed. Mr. Bryant soon afterwards became ill and died before any resumption of work.

After several years the U. S. Coast and Geodetic Survey made available certain new information and the General Land Office of Texas obtained new data which became available, so that at long last the required coordinates have been secured and proven. Monuments have been placed as indicated in the Field Notes below, and this report is now submitted to both courts for final approval.

We found that the Act of the Legislature dated April 4, 1846 creating Calhoun County out of Victoria, Jackson and Matagorda Counties defined in part



the boundary between Jackson and Calhoun Counties as follows: "THENCE, along its (James Hughson Survey)" northern line to its termination on Carancahua Bay; "THENCE up said Bay, with its meanders, to the Northeastern corner of a survey made for Sam Houston, on the West side of said Bay" (Gammel, H. P. N. LAWS OF TEXAS, Vol. II, page 1354, and such boundary definition is inconclusive and subject to more than one determination, it is recommended that the above quoted portion of the description of the Jackson-Calhoun County boundary line be Amended by concurring Resolution of the respective Commissioners Courts to read as follows:

THENCE (from the Northeast corner of James Hughson Survey, Calhoun County, Texas, said corner having an X value of 2,858.236.49 and a Y value of 315,983.77 Lambert Coordinates) S. 88 deg. 39' 00" .38 W., Grid Bearing with the northern boundary line of James Hughson Survey, a Distance of 9,290.92 varas to a point in the common boundary line of State Drilling Blocks Nos. 240 & 223 which said point has an X value of 2,832,435.38 and a Y value of 315,375.70 for a County line corner,

THENCE N. 01 deg. 20' 59" .62 W., with the common boundary line between State Drilling Blocks Nos. 223 and 240, 224 and 257, 225 and 258 and 259, a distance of 2,065.18 varas to the Northeast corner of State Drilling Blocks No. 225, for corner of the County line, said corner having an X value of 2,832,300.25 and a Y value of 321,110.72.

THENCE N. 88 deg. 30' 00" .38 E., with the common boundary line between State Drilling Blocks Nos. 239 and 259 a distance of 475.20 varas to a point on said line having an x value of 2,833,619.99 and a Y value of 321,141.81 for a corner of County Line,

THENCE N. 01 deg. 20' 59" .62 W., through the center of Drilling Blocks Nos. 239, 238, 237, 236, 235, and with the common line between Drilling Blocks Nos. 233 and 234, a distance of 5,227.20 varas to a point in the common boundary line between Drilling Blocks Nos. 233 and 234, having an X value of 2,833,277.80 and a Y value of 335,657.80 for a corner of County Line.

THENCE S. 88 deg. 39' 00" .38 W., across State Drilling Blocks Nos. 233 and 232, a distance of 950.40 varas to a point in the common boundary line between Drilling Blocks Nos. 231 and 232, having an X value of 2,830,638.54



and a Y value of 335,595.57 for a corner of County Line,

THENCE S. 32 deg. 20' 27" W., through Drilling Blocks Nos. 231, 230, 207, and 208, a distance of 2,570.04 varas to a point in the common boundary line between Drilling Blocks Nos. 205 and 208 having an X value of 2,826,819.57 and a Y value of 329,563.96 for a corner of County Line,

THENCE S. 88 deg. 39' 00" .38 W., across Drilling Block No. 205, a distance of 950.40 varas to a point in the common boundary line between Drilling Blocks Nos. 202 and 205, having an X value of 2,824,180.31 and a Y value of 329,501.78 for a corner of County Line,

THENCE S. 01 deg. 20' 59" E., with the common boundary line between Drilling Blocks Nos. 202 and 205, 203 and 204, a distance of 1,001.27 varas to a point on the shore line of Carancahua Bay marked by a 2 inch galvanized pipe, having an X value of 2,824,245.84 and a Y value of 326,721.25.

THENCE Eastwardly S. 73 deg. 34' 50" E., with the shore line of Carancahua Bay a distance of 39.83 varas to an iron rod at end of fence, at the Northeast corner of Sam Houston Survey, Calhoun County, Texas, said iron rod having an X value of 2,824,352.99 and a Y value of 326,693.70,

THENCE S. 2 deg. 22' 11" E., with the Sam Houston Survey Boundary line a distance of 477.94 varas to a concrete block in ground under gate in center of roadway, said point having an X value of 2,824,407.89 and a Y value of 325,366.16.

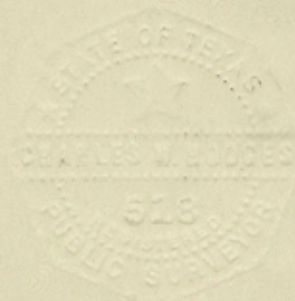
This is to certify that I, Charles W. Hodges, County Surveyor, Calhoun County, Texas, and State of Texas Registered Public Surveyor No. 518, did actually enter upon the ground around Carancahua Bay in Jackson and Calhoun Counties and with the assistance of Larry Trevino, Jim Smith, Johnie Shoruppa, J. P. Skoruppa, Pete Trevino and Nieves Garcia, chainman; and C. G. Warren Instrument man did survey the above described Calhoun-Jackson County boundary line between the date of December 14, 1951 and January 26th, 1959; and the accompanying Plat is a true representation of the Surveyed Boundary line.

Approved  
Audit \_\_\_\_\_  
Legal *J.B.H.*  
Engineering *R.L.H.*  
Geology \_\_\_\_\_  
Execution \_\_\_\_\_

*Charles W. Hodges*  
CHARLES W. HODGES, COUNTY SURVEYOR, CALHOUN COUNTY TEXAS, AND REGISTERED PUBLIC SURVEYOR NO. 518.

I, Bill Allcorn, Commissioner of the General Land Office of the State of Texas, have on the 15th day of January, A. D. 1960, approved, adopted and officially filed these field notes of the Calhoun - Jackson County division line.

*Bill Allcorn*  
BILL ALLCORN, COMMISSIONER OF THE GENERAL LAND OFFICE OF THE STATE OF TEXAS



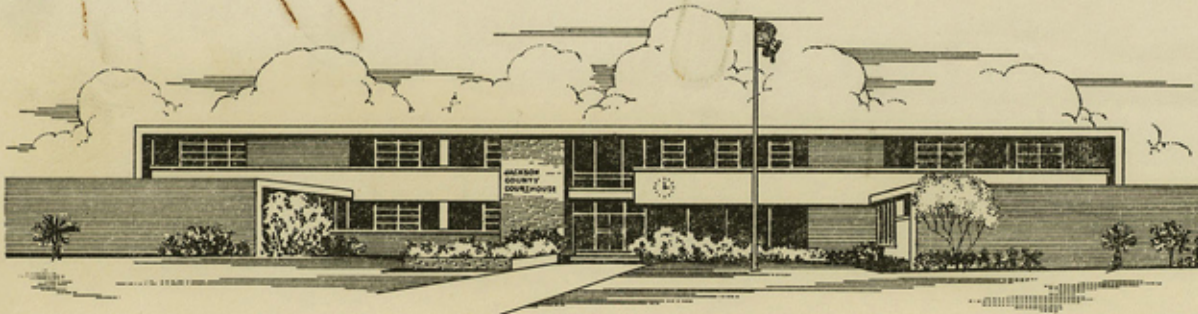
(1) Counter 50997



Calhoun Co. Bdry. line ~~6~~<sup>4</sup>

Counter 50998





Office of The County Judge  
JACKSON COUNTY  
Edna, Texas

*Judge*

*6*

January 21, 1960

Mr. Jack Giberson,  
Legal Division,  
General Land Office,  
Austin 14, Texas.

Re: Boundary Line  
Jackson, Calhoun Counties

RECEIVED  
JAN 22 1960  
General Land Office

Dear Sir:

In reply to your letter of January 7th, I hand you herewith field notes of compromise boundary prepared by Charles W. Hodges of Port LaVaca. Note that our county surveyor has converted ~~xxxxxxxxxx~~ feet in to varas as you request.

When you have finished with this instrument please return to me as I think it is the only one we have.

Very truly yours,

*Wm. H. Hamblen*

Wm. H. Hamblen  
County Judge



JAN 22 1960

General Land Office

REPORT OF SURVEY OF JACKSON-CALHOUN COUNTY LINE THROUGH  
CARANCAHUA BAY.

TO: HON. COMMISSIONERS COURTS OF CALHOUN AND JACKSON COUNTIES.

Pursuant to instructions received from the Calhoun County Commissioners Court and the Jackson County Commissioners Court, Charles W. Hodges, the undersigned County Surveyor of Calhoun County and Mr. R. J. Bryant County Surveyor of Jackson County, met at the accepted corner of Jackson and Calhoun Counties at the Northeast corner of the James Hughson Survey, Calhoun County, Texas on December 14, 1951, and after the swearing in of chainmen, Larry Trevino, Jim Smith, Johnie Skoruppa and J. P. Skoruppa, according to Law, proceeded to run out the County line along the North boundary line of said James Hughson Survey to its terminus on the bank of Carancahua Bay.

From the terminus of said North line of James Hughson Survey on Carancahua Bay the meanders of the Shore up Carancahua Bay were Surveyed to a point opposite and across the Bay on an extension of the Northeast boundary line of the Sam Houston Survey, Calhoun County, Texas, THENCE by Triangulation the course and distance across the Bay to the Northeast corner of said Sam Houston Survey was calculated. THENCE the meanders of the Shore down Carancahua Bay were surveyed to a point opposite and across the Bay from the aforesaid terminus on Carancahua Bay of the North line of the James Hughson Survey, From the data thus obtained the area of Carancahua Bay was Calculated in order that it might be possible to ascertain what would constitute an approximate equal division of Area to each County, as tentatively authorized by the Minutes of the Commissioners Courts of the respective Counties.

The idea of running a line which would be equidistant between the two shores was explored and found to be impractical, as such a line could not be permanently fixed and would be variable as the erosion of or the accretion to shore lines occurred.

The advise and assistance of the General Land office of Texas was solicited, and it was pointed out to us that the submerged areas were already subdivided by the State of Texas into Drilling Blocks, and that the boundaries of



RECEIVED  
JAN 22 1960

General Land Office

such Drilling Blocks could be located by the use of Plane Coordinates of the Texas Lambert Grid System, and that in order to get an agreed boundary line placed on Official Maps, that it would be necessary to use Grid Coordinates on the corners and terminus points of such agreed boundary line.

After calculations and consideration between your Surveyors the division of Carancahua Bay by the line as hereinafter described and as shown on the Plat accompanying this report was agreed upon as the dividing line, which we would report to our respective commissioners Courts as being the most logical and Practical boundary line to be arrived at, which would place about equal areas in each County, could be permanently fixed and could be accurately mapped.

The determination of the Lambert Grid System Coordinates required by this line was undertaken as a joint project by your Surveyors, but we soon discovered that we were faced with the problem that certain U. S. Coast and Geodetic Survey Triangulation Stations had been destroyed or had become so surrounded by houses as to be not usable. For instance, the radio Tower at Camp Hulen was given as one Triangulation point, and this had long since taken down; another point was the cupola of the old Houston Club building at Carancahua Beach, which was destroyed by fire some years ago; another was Triangulation Station "Slaiku" which is under a wooden fence in a cow lot now and cannot be occupied.

Letters were written to the U. S. Coast and Geodetic Survey notifying them of the situation and requesting replacement of these stations and the establishment of new ones nearer to the desired points.

Your Surveyor decided that since it was impractical at the time to complete our work, that we would suspend the work until such time as it could be completed. Mr. Bryant soon afterwards became ill and died before any resumption of work.

After several years the U. S. Coast and Geodetic Survey made available certain new information and the General Land Office of Texas obtained new data which became available, so that at long last the required coordinates have been secured and proven. Monuments have been placed as indicated in the



JAN 22 1960

General Land Office

Field Notes below, and this report is now submitted to both courts for final approval.

We found that the Act of the Legislature dated April 4, 1846 creating Calhoun County out of Victoria, Jackson and Matagorda Counties defined in part the boundary between Jackson and Calhoun Counties as follows: "THENCE, along its (James Hughson Survey)" northern line to its termination on Carancahua Bay; "THENCE up said Bay, with its meanders, to the North-eastern corner of a survey made for Sam Houston, on the West side of said Bay" (Gammel, H. P. N., LAWS OF TEXAS, Vol. II, page 1354, and such boundary definition is inconclusive and subject to more than one determination, it is recommended that the above quoted portion of the description of the Jackson-Calhoun County boundary line be Amended by Concurring Resolution of the respective Commissioners Courts to read as follows:

THENCE (from the Northeast corner of James Hughson Survey, Calhoun County Texas, said corner having an X value of <sup>1,028,965.11 Vrs</sup> 2,858,236.49 and a Y value of <sup>113,754.16 Vrs</sup> 315,983.77 Lambert Coordinates) S. 88 deg. 39' 00" .38 W., Grid Bearing with the northern boundary line of James Hughson Survey a distance of <sup>9,290.92 Vrs</sup> 25,808.10 feet to a point in the common boundary line of State Drilling Blocks Nos. 240 & 223 which said point has an X value of <sup>2,832,435.38</sup> ~~2,832,198~~ and a Y value of <sup>1,019,676.7 Vrs</sup> <sup>113,535.25 Vrs</sup> 315,375.70 for a County line corner,

THENCE N. 01 deg. 20' 59" .62 W. with the common boundary Line between State Drilling Blocks Nos. 223 and 240, 224 and 257, 225 and 258 and 259, a distance of <sup>2,065.18 Vrs</sup> 5,736.6 feet to the Northeast corner of State Drilling Block No. 225, for corner of the County Line, said corner having an X value of <sup>1,019,628.11 Vrs</sup> 2,832,300.25 and a Y value <sup>115,599.86 Vrs</sup> of 321,110.72.

THENCE N. 88 deg. 39' 00" .38 E., with the common boundary line between State Drilling Blocks Nos. 239 and 259 a distance of <sup>475.2 Vrs</sup> 1320 feet to a point on said line having an X value of <sup>1,020,103.16 Vrs</sup> 2,833,619.88 and a Y value of <sup>115,611.05 Vrs</sup> 321,141.81 for a corner of County Line,

THENCE N. 01 deg. 20' 59" .62 W., through the center of Drilling Blocks Nos. 239, 238, 237, 236, 235, and with the common line between Drilling Blocks Nos. 233 and 234, a distance of <sup>5,227.2</sup> 14,520 feet to a point in the common boundary line between



JAN 22 1960

General Land Office

tween Drilling Blocks Nos. 233 and 234, having an X value of <sup>1,019,980 Vrs</sup> 2,833,277.80  
<sup>120,836.81 Vrs</sup> and a Y value of 335,657.80 for a corner of County Line,

THENCE S. 88 deg. 39' 00" .38 W., across State Drilling Blocks Nos. 233  
<sup>950.4 Vrs.</sup> and 232, a distance of 2640 feet to a point in the common boundary line be-  
<sup>1,019,029.86 Vrs.</sup> tween Drilling Blocks Nos. 231 and 232, having an X value of 2,830,638.54  
<sup>120,814.41 Vrs</sup> and a Y value of 335,595.57 for a corner of County Line,

THENCE S. 32 deg. 20' 27" W. through Drilling Blocks Nos. 231, 230, 207,  
<sup>2,570.0 Vrs.</sup> and 208, a distance of 7,139.00 feet to a point in the common boundary line  
<sup>1,017,655.06 Vrs.</sup> between Drilling Blocks Nos. 205 and 208 having an X value of 2,826,819.57  
<sup>118,643.03 Vrs</sup> and a Y value of 329,563.96 for a corner of County Line,

THENCE S. 88 deg. 39' 00" .38 W. across Drilling Block No. 205, a distance  
<sup>950.4 Vrs.</sup> of 2640 feet to a point in the common boundary line between Drilling Blocks  
<sup>1,016,704.9 Vrs.</sup> Nos. 202 and 205, having an X value of 2,824,180.31 and a Y value of 329,501.78  
<sup>118,620.64 Vrs.</sup> for a corner of County Line,

THENCE S. 01 deg. 20' 59" .62 E., with the common boundary line between  
<sup>1,001.27 Vrs.</sup> Drilling Blocks Nos. 202 and 205, 203 and 204, a distance of 2,781.30 feet,  
to a point on the shore line of Carancahua Bay marked by a 2 inch galvanized  
<sup>1,016,728.49 Vrs.</sup> pipe, having an X value of 2,824,245.84 and a Y value of 326,721.25.  
<sup>117,619.65 Vrs.</sup>

THENCE Eastwardly S. 73 deg. 34' 50" E. with the shore line of Carancahua  
<sup>39.83 Vrs</sup> Bay a distance of 110.64 feet to an iron rod at end of fence, at the Northeast  
corner of Sam Houston Survey, Calhoun County, Texas, said iron rod having an  
<sup>1,016,767.08 Vrs.</sup> X value of 2,824,352.99 and a value of 326,693.70,  
<sup>117,609.73 Vrs.</sup>

THENCE S. 2 deg. 22' 11" E., with the Sam Houston Survey Boundary line a  
<sup>477.95 Vrs.</sup> distance of 1,327.65 feet to a concrete block in ground under gate in center  
<sup>1,016,786.84 Vrs</sup> of roadway, said point having an X value of 2,824,407.89 and a Y value of  
<sup>117,131.82 Vrs.</sup> 325,366.16.

Respectfully Submitted.

Charles W. Hodges  
Charles W. Hodges, County Surveyor,  
Calhoun County, Texas.



RECEIVED  
JAN 22 1960

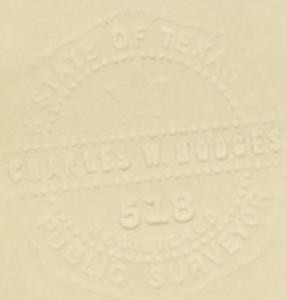
RECEIVED FROM: [illegible]

This is to certify that I, Charles W. Hodges, County Surveyor, Calhoun County, Texas, and State of Texas Registered Public Surveyor No. 518, did actually enter upon the ground around Carāncahua Bay in Jackson and Calhoun Counties and with the assistance of Larry Trevino, Jim Smith, Johnie Shoruppa, J. P. Skoruppa, Pete Trevino and Nieves Garcia, chainman; and C. G. Warren, Instrument man did survey the above described Calhoun-Jackson County boundary line between the date of December 14, 1951 and January 26th, 1959; and the accompanying Plat is a true representation of the Surveyed Boundary line.

January 26, 1959

*Charles W. Hodges*

CHARLES W. HODGES, COUNTY SURVEYOR, CALHOUN COUNTY  
TEXAS, REGISTERED PUBLIC SURVEYOR NO. 518.



This is to certify that I, Albert H. Clayton did actually enter upon the ground and verify by field work and by computation the coordinates given above for the various County Boundary Line corners.

January 26, 1959.

Albert H. Clayton, Licensed State Land Surveyor.



January 7, 1960

Commissioners' Court of Calhoun County  
Port Lavaca, Texas

Gentlemen:

The General Land Office several weeks ago received field notes as a result of a resurvey of the Jackson and Calhoun County line. This survey prior to being forfeited to the General Land Office was approved by the Commissioners' Court of both Jackson and Calhoun Counties. Our Engineering Department and Legal Department have checked this survey work and determined that the field notes are acceptable and the survey work will be approved after the field notes have been mailed to this office in varas instead of feet. The law requires that all field notes filed in the General Land Office be in varas.

I would like to call your attention to the fact that in the Carancahua Bay area of the Jackson and Calhoun County line between the James Hughson and Sam Houston surveys, which are on record in this office, the location of the original County line is subject to more than one determination and interpretation. In view of the fact, however, that the counties themselves are situated with the line, and the line proposed in these field notes will do the least amount of damage to either county, and the General Land Office is prepared to approve the County line between Jackson and Calhoun Counties as resurveyed on the ground, in accordance with my above request, please furnish us field notes in varas rather than in feet so that we can make our final approval.

Sincerely yours,

BILL ALLCORN, Commissioner

By

Jack Giberson, Director  
Legal Division

JG:ss



January 7, 1960

Commissioners' Court of Jackson County  
Edna, Texas

Gentlemen:

The General Land Office several weeks ago received field notes as a result of a resurvey of the Jackson and Calhoun County line. This survey prior to being forfeited to the General Land Office was approved by the Commissioners' Court of both Jackson and Calhoun Counties. Our Engineering Department and Legal Department have checked this survey work and determined that the field notes are acceptable and the survey work will be approved after the field notes have been mailed to this office in varas instead of feet. The law requires that all field notes filed in the General Land Office be in varas.

I would like to call your attention to the fact that in the Carancahua Bay area of the Jackson and Calhoun County line between the James Hughson and Sam Houston surveys, which are on record in this office, the location of the original County line is subject to more than one determination and interpretation. In view of the fact, however, that the counties themselves are situated with the line and the line proposed in these field notes will do the least amount of damage to either county, and the General Land Office is prepared to approve the County line between Jackson and Calhoun Counties as resurveyed on the ground, in accordance with my above request, please furnish us field notes in varas rather than in feet so that we can make our final approval.

Sincerely yours,

**BILL ALLCORN, Commissioner**

By  
**Jack Giberson, Director**  
**Legal Division**

JG:ss



January 27, 1960

Hon. Wm. H. Hamblen  
County Judge of Jackson County  
Edna, Texas

Dear Judge Hamblen:

Please find enclosed herewith an original copy of approved and accepted field notes of the Calhoun - Jackson County line. Said approval has been typed on the bottom of the field notes, which you will note. If there are no further questions or problems, it is the opinion of this office that the matter has been concluded to the satisfaction of all concerned.

If we can be of further assistance to you, please do not hesitate to call upon us.

Sincerely yours

BILL ALLCORN, Commissioner

By

Jack Giberson, Director  
Legal Division

JG:jer  
Encl.



January 27, 1960

Hon. Howard G. Hartzog  
County Judge of Calhoun County  
Port Lavaca, Texas

Dear Judge Hartzog:

Please find enclosed herewith an original copy of approved and adopted field notes of the Calhoun - Jackson County line. Said approval has been typed on the bottom of the field notes, which you will note. If there are no further questions or problems, it is the opinion of this office that the matter has been concluded to the satisfaction of all concerned.

If we can be of further assistance to you, please do not hesitate to call upon us.

Sincerely yours

BILL ALLCORN, Commissioner

By

Jack Giberson, Director  
Legal Division

JG:jer  
Encl.