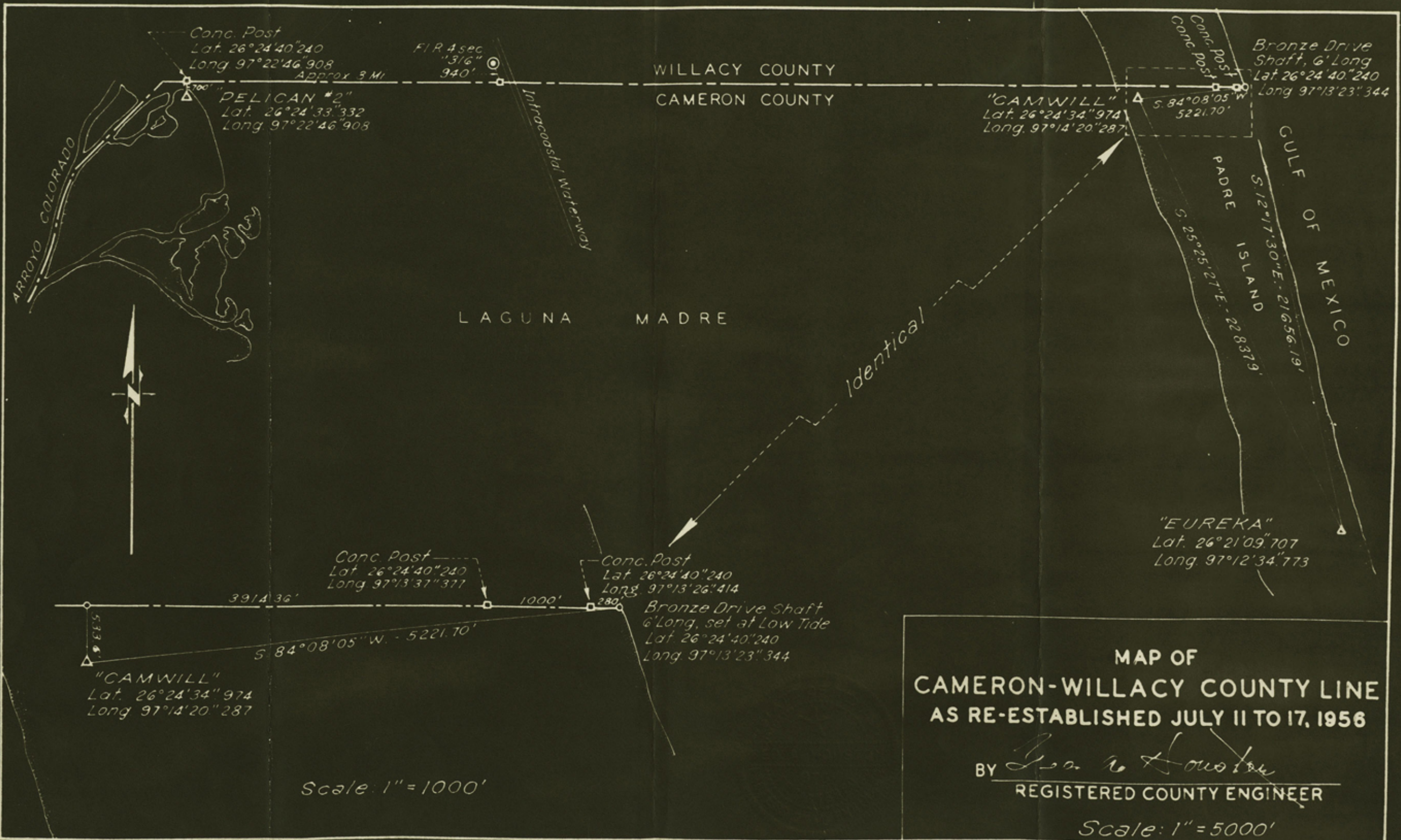


Return to Jack Jordan  
Room 301 Highway Bldg

Fold here



**MAP OF  
CAMERON-WILLACY COUNTY LINE  
AS RE-ESTABLISHED JULY 11 TO 17, 1956**

BY *John R. Houston*  
REGISTERED COUNTY ENGINEER

Scale: 1" = 5000'

Fold here

WILLACY AND CAMERON #5  
COUNTY LINE

RE-ESTABLISHED  
JULY 11 to 17, 1955

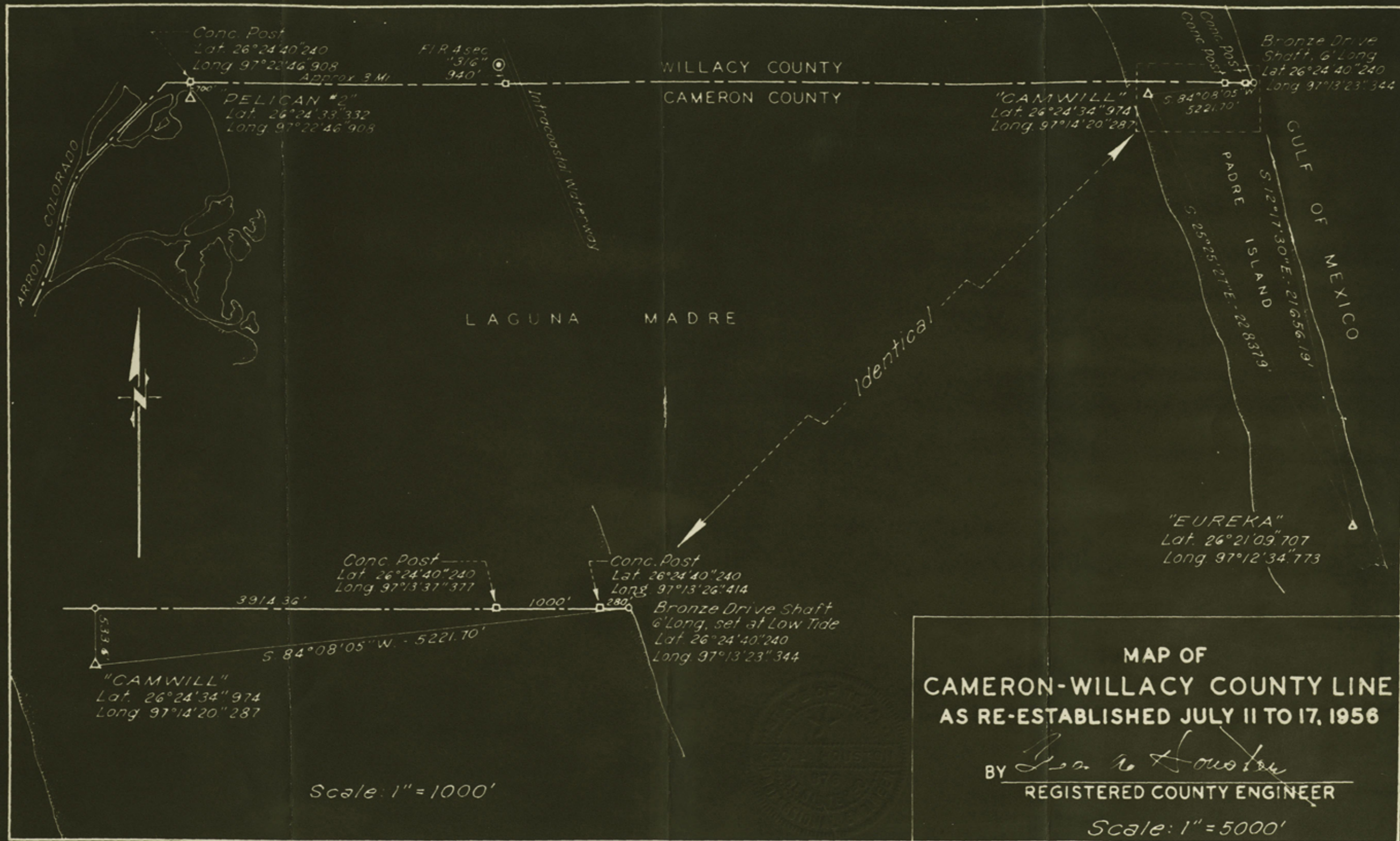
BY

GEORGE A. HOUSTON  
REGISTERED COUNTY ENGINEER

(Received from Highway Dept.  
March 4, 1957)

Fold here

Return to Jack Jordan Highway Bldg Room 301



**MAP OF CAMERON-WILLACY COUNTY LINE AS RE-ESTABLISHED JULY 11 TO 17, 1956**

BY *John R. Houston*  
 REGISTERED COUNTY ENGINEER

Scale: 1" = 5000'

Fold here

Contour 51115

5

CAMERON AND WILLACY  
COUNTY LINE

RE-ESTABLISHED  
JULY 11 to 17, 1955

By

GEORGE A. HOUSTON  
REGISTERED COUNTY ENGINEER

(Received from Highway Dept.  
March 4, 1957)