

April 22 1901

Be it remembered that on
this the 22nd day of April 1901 there
came on and was held a
called session of the Hon^{ble} Coms
court of Carson County at the
court house in the town of
Panhandle

Hon J G Harrison Presiding
R W Ware Coms Sect No 1
O W McBride " " " 2
J A Dees " " " 3
J S Wynne " " " 4
Jal Chastain Sheriff and
Dan A Leary clk

Court being opened by the
Sheriff according to Law the
following proceedings were
had

Ordered by the court that
the field notes as furnished
by Jas L Gray who was appointed
to survey the North East and
South boundary lines of Carson
County be approved
attest

Dan A Leary
clk

J G Harrison
Co Judge

Wednesday July 20 1901

Be it remembered that on this day
(20th July 1901) There came on and
was held a called meeting of the
Hon Coms Court at the Court house
in the town of Parkville Carson
Co Ky

J L Harrison Co Judge Presiding
R H Ware Coms Preset. No 1

T H McBride " " " 2

J F Dees " " " 3

J S Hyman " " " 4

Al Chastain Sheriff & Dan A
Leary clk

Court being opened by the
Sheriff the following proceedings
were had

Ordered by the court that
J L Harrison Co Judge be and
is hereby authorized to enter
into contract with a competent
Surveyor to have North East
and South Lines of Carson
county surveyed & established

attest
Dan A Leary
clk

J L Harrison
Co Judge

The State of Texas }
Carson County }

I Dan A Leary Clerk County
Court for Said County & State
do hereby certify that the
foregoing is a true and
correct copy of all orders
made by County Court in
regard to surveying bounds
of Line of Carson Co
Witness my hand & Seal
of office this 21st day of June
1901

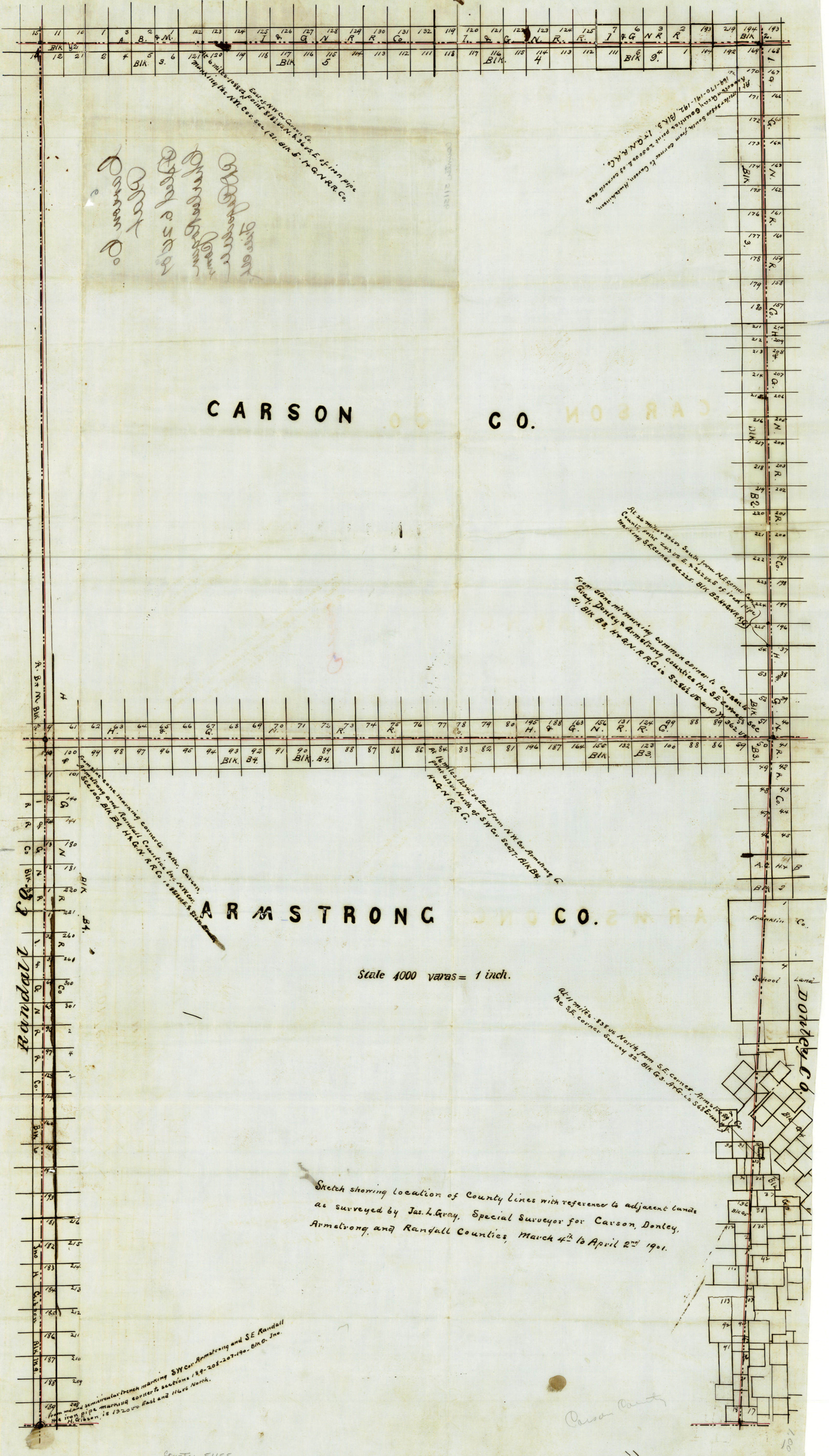
Dan A Leary
Clerk Co Court Carson
Co Tex

6/ 11 1901

Carson Co
Order of Court
Filed 6.24.01
Charles Rogan
Comr
Rd Ragdale
File Clk.

Carson Co. Bound.
donis

6.24.07



CARSON CO. NEBRASKA

ARMSTRONG CO. NEBRASKA

Scale 4000 varas = 1 inch.

Sketch showing location of County Lines with reference to adjacent lands as surveyed by Jas. L. Gray, Special Surveyor for Carson, Donley, Armstrong and Randall Counties, March 4th to April 2nd 1901.

Handwritten notes:
 6 miles - 10880 varas
 1/2 mile - 838 varas
 1/4 mile - 419 varas
 1/8 mile - 209 varas
 1/16 mile - 105 varas
 1/32 mile - 52 varas

Handwritten notes:
 1/4 mile - 419 varas
 1/8 mile - 209 varas
 1/16 mile - 105 varas
 1/32 mile - 52 varas

Handwritten notes:
 All 36 miles taken South from N.E. corner of Sec. 224
 County line 223 vs E. & 212 vs S of Iron Pipe
 marking S.E. corner sec. 222. BIK B2, HX R R G

Handwritten notes:
 All 16 miles taken East from NW cor. Armstrong Co
 boundary North of SW cor. sec. 77, BIK B4
 HX R R G

Handwritten notes:
 Same line marking corner of P.M. Carson
 boundary and Randall County for HX R R G
 Sec. 100, BIK B4, HX R R G, is 1/4 mile E. of Sec. 100

Handwritten notes:
 All 1 mile - 838 varas North from S.E. corner Armstrong Co.
 the S.E. corner surveyed by BIK G-3, HX R R G, is 1/4 mile East

Handwritten notes:
 From middle semicircular trench marking SW cor. Armstrong and SE Randall
 from iron pipe marking corner to sections 189-208-207-190. BIK O. Ino.
 H. Gibson, is 1320 varas East and 1168 varas North.

Handwritten signature:
 Carson County

⁶
Carson Co
Plat
Filed 6.24.01
Charles Rogan
Comr
R. D. Reggelle
Filed

CARSON

CO.

ARWSTRONG

CO. SMRY

Scale 4000 Feet = 1 Inch.

Dimensions and bearings computed from the
as shown on the plan. Special attention for Carson Co. plat
shown showing location of Carson Co. with reference to adjacent lands.

18
The following is a list of the names of the persons who have been granted patents for the same, with the date of the grant, and the number of the patent.

