

File No. 50

Dred Notes of Co line
between

Jefferson
of
Chambers

Galveston, Co.

Dred June 1st 1885
Jefferson & Dry line

Only signed by Bureau
of Chambers Co
Chambers Co Dry

747
245
452

321
325

\$4.00

%

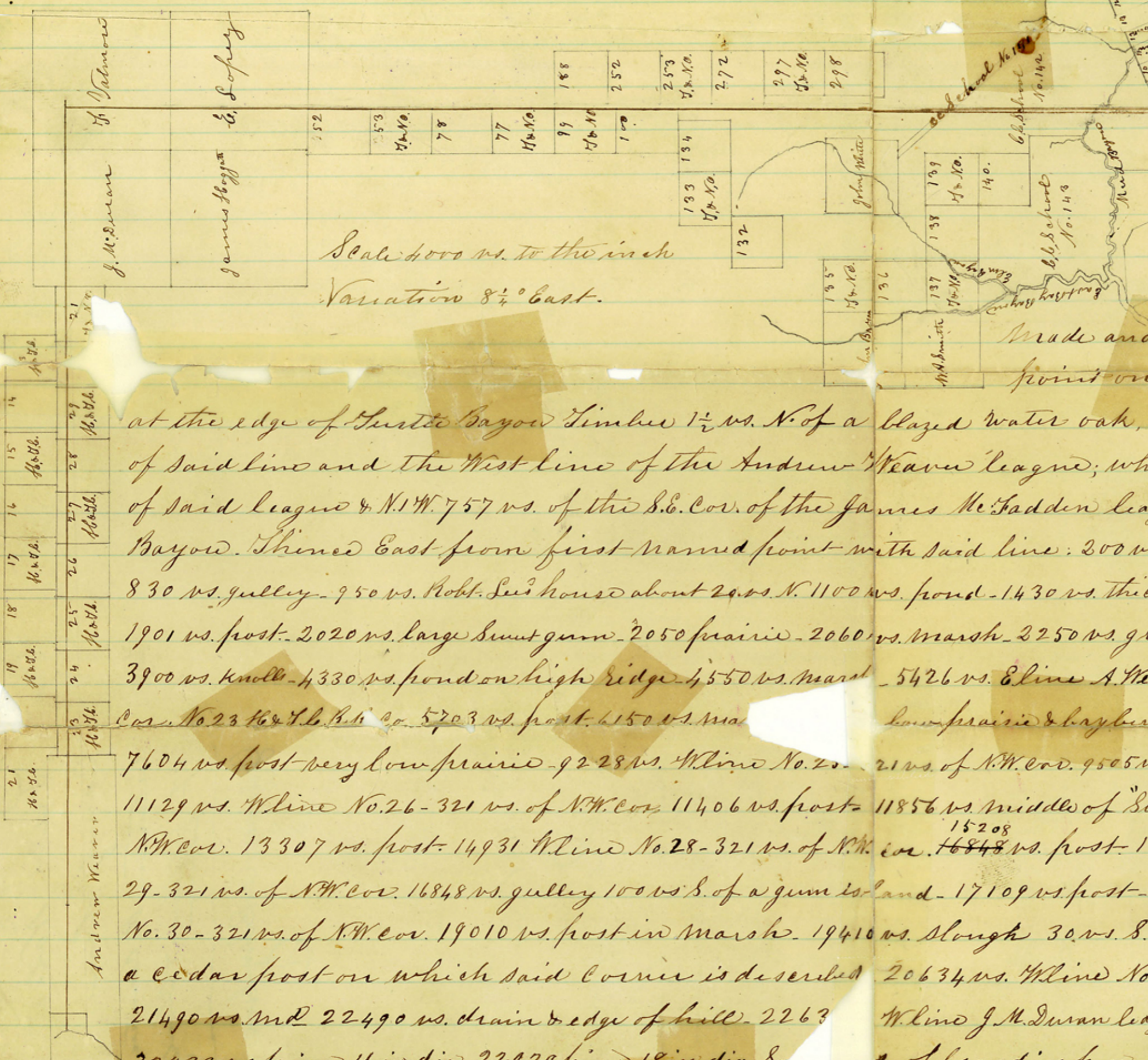
For new line between
Chambers and Jefferson
See sketch and fruit
note in Tube in
drawn "C" Ice Box -

12-18-12

Clark

Counter 51267

The State of Texas
 Chambers County 3 Field Notes of a
 Survey of a portion of the N. line of
 Chambers County & S. line of Liberty
 County, and the entire East bound-
 ary line of County, which is
 the West line of Jefferson County
 Made in accordance with an
 order of the Hon. Commis-
 sioners Court of Chambers County
 made and entered August 9th 1881. Beginning at a
 point on the line of Liberty and Cham-
 bers Counties



at the edge of Turke Bayou Timber 1 1/2 vs. N. of a blazed water oak, and 39 36 vs. East of the point of intersection of said line and the West line of the Andrew Weaver league; which said point is S. 16. 584 vs. of the N.W. cor. of said league & N. 1/4. 757 vs. of the S.E. cor. of the James McFadden league, & 647 vs. East of the E. bank of Turke Bayou. Thence East from first named point with said line: 200 vs. road. 300 vs. E. of "Boggy Marsh" 356 vs. pine 6 in. dia 830 vs. gully. 950 vs. Robt. Leo's house about 29 vs. N. 1100 vs. pond. 1430 vs. thicket. 1525 vs. Whites Bayou. 1720 vs. "Big Island" 1901 vs. post. 2020 vs. large sumt gum. 2050 prairie. 2060 vs. marsh. 2250 vs. ground 10 vs. S. 3100 vs. a gum island N. 3802 vs. post 3900 vs. knoll. 4330 vs. pond on high ridge. 4550 vs. marsh. 5426 vs. Eline A. Weaver league 747 vs. of its N.E. cor. & 321 vs. of N.W. cor. No. 23 & N.E. cor. 5703 vs. post. 6150 vs. marsh. 7604 vs. post very low prairie. 9228 vs. N. line No. 20. 21 vs. of N.W. cor. 9505 vs. post. 10170 vs. gully. 10700 vs. middle of marsh. 11129 vs. N. line No. 26. 321 vs. of N.W. cor. 11406 vs. post. 11856 vs. middle of "Sweet Bay Marsh" 13030 vs. N. line No. 27. 321 vs. of N.W. cor. 13307 vs. post. 14931 N. line No. 28. 321 vs. of N.W. cor. 16848 vs. post. 15458 vs. middle of marsh. 16832 vs. N. line No. 29. 321 vs. of N.W. cor. 16848 vs. gully 100 vs. S. of a gum island. 17109 vs. post. 17119 vs. "Oak Island Gully" 18733 vs. N. line of No. 30. 321 vs. of N.W. cor. 19010 vs. post in marsh. 19410 vs. slough 30 vs. S. 19589 vs. corner of Liberty & Jefferson Counties a cedar post on which said corner is described. 20634 vs. N. line No. 21. S. & N.E. R.R. Co. 31 vs. of N.W. cor. 20909 vs. post. 21490 vs. rd. 22490 vs. drain & edge of hill. 2263 vs. N. line J.M. Duran league 1215 vs. of N.W. cor. & 321 vs. of N.E. cor. No. 21. 22929 vs. pine 11 in dia. 22929 vs. pine 18 in dia. 23391 vs. mound. 23484 vs. forked pine 2 ft. dia. in E. edge of Little Pine Island. 25292 vs. rd. 25543 vs. gully. 25732 vs. S. edge of pond. 26562 vs. gully. 27193 vs. mound. 27634 vs. N. line J. Valmore league 1215 vs. of N.W. cor. 27662 vs. gully. 28273 vs. gully. 29094 vs. corner of Jefferson & Chambers Counties. a cedar post on which said corner is described. the most elevated tree top in "Turkey Island" bears N. 15 W. & the left hand extreme of "Brushy Island" S. 14 3/4 E. Thence South with the line of said Counties: 1065 vs. middle of small marsh. 1095 vs. Road to Taylors Bayou. 1890 vs. gully. 1901 vs. mound. 2750 vs. Brushy Island about 600 vs. E. 3785 vs. N. line E. Lopez league 1460 vs. of N.W. cor. 3802 vs. mound. 5602 vs. mound. 5703 vs. mound. 5943 vs. mound. 6203 vs. edge of pond. 7493 vs. mound. 7604 vs. mound. 8344 vs. pond. 8467 vs. gully. 8785 vs. Eline E. Lopez league and N.E. cor. No. 52 S. & N.E. R.R. Co. 9404 vs. Cedar post on high ridge. 9505 vs. mound near same pond. 11026 vs. N.E. cor. No. 53. 11240 vs. slow bushes. 11318 vs. mound on gully. 11406 vs. mound on gully. 13226 vs. mound. 13267 vs. N.E. cor. No. 78. 13307 vs. mound. 13771 vs. gully. 14457 vs. gully. 15000 vs. mound. 15208 vs. mound. 15258 vs. gully. 15338 vs. gully. 15508 vs. N.E. cor. No. 77. 16836 vs. mound. 17109 vs. mound. 17109 vs. N.E. cor. No. 99. W. of N.W. cor. No. 188. 18000 vs. marsh. 18844 vs. Cedar post on high ridge in thicket. 19010 vs. mound. N. & S. of persimmon trees. 19990 vs. N.E. cor. No. 100. 20750 vs. mound. 20911 vs. 22231 vs. S.E. cor. No. 100. 22577 vs. mound. 22812 vs. mound. 24492 vs. mound. 24713 vs. mound. 26343 vs. mound. 26490 vs. mound. 26614 vs. mound. 27647 vs. mound & stake 1197 vs. S. of N.E. cor. John White Survey. 28289 vs. Cedar post on high ridge. 28515 vs. mound. 28685 vs. gully. 29976 vs. mound. 30355 vs. 1197 vs. E. of S.E. cor. John White Sur. 30416 vs. mound. 30435 vs. marsh. 31595 vs. marsh. 31989 vs. mound. 32245 vs. N.E. line E. School Sur. No. 141. 32317 vs. mound. 32515 vs. N.E. line E. School Sur. No. 142. 32619 vs. marsh. 32669 vs. mound & stakes. 32909 vs. drain. 33309 vs. sand drain. 33529 vs. sand drain. 33951 vs. mound. 34218 vs. mound. 35171 vs. marsh. 35171 vs. mound. 36179 vs. mound. 37785 vs. Cedar post on high ridge. on the N. bank of "Mud Bayou" 20 vs. below a short gully. 37918 vs. same bayou. 38105 vs. S. side of small bayou near its mouth. 39686 vs. mound. 39805 vs. pond about 400 vs. W. 39815 vs. N. line of ~~John White~~ Sur. 262 vs. of its N.W. cor. 41587 vs. mound. 42737 vs. corner of Jefferson & Chambers Counties. a post on the Gulf shore on which said corner is described. 207 vs. of S.W. cor. of ~~John White~~ Sur. and from the S.E. cor. of the Martin Durman Sur. which is the S.E. cor. of Galvestone County, the following Courses: N. 70 E. 1100 vs. N. 68 E. 1381 vs. Surveyed August 29th & September 3rd, 4th & 5th 1881. Chaining corrected Dec 13th, 14th, 16th & 18th 1881. & March 8th, 15th, 16th & 17th 1882

I, D. B. Wallis, District Surveyor of Chambers District do hereby certify that the foregoing Survey was actually made in the field, and according to law, and that the limits, boundaries and corners with the marks, natural and artificial, are truly described in the foregoing plat and field notes.
 Given under my hand at Wallisville this 8th day of April 1882.
 D. B. Wallis D.S.C.

- Britz Honkams
- Levi Weaver
- John Dugat
- John Leo
- Robert Leo
- R. J. Stephenson
- James Long
- Austin Abshire

Chambers Co Bdry

No 50

Field Notes
County line
between the Counties
of Jefferson + Chambers

Jefferson Co. Bdry line
(X)

Co line

June 1/85

Robinson

only signed by Secy
Mayor of Chambers
Co claiming to be
the District Surveyor

No 1
County 51209

[Faint, illegible handwriting on the right page of the notebook]