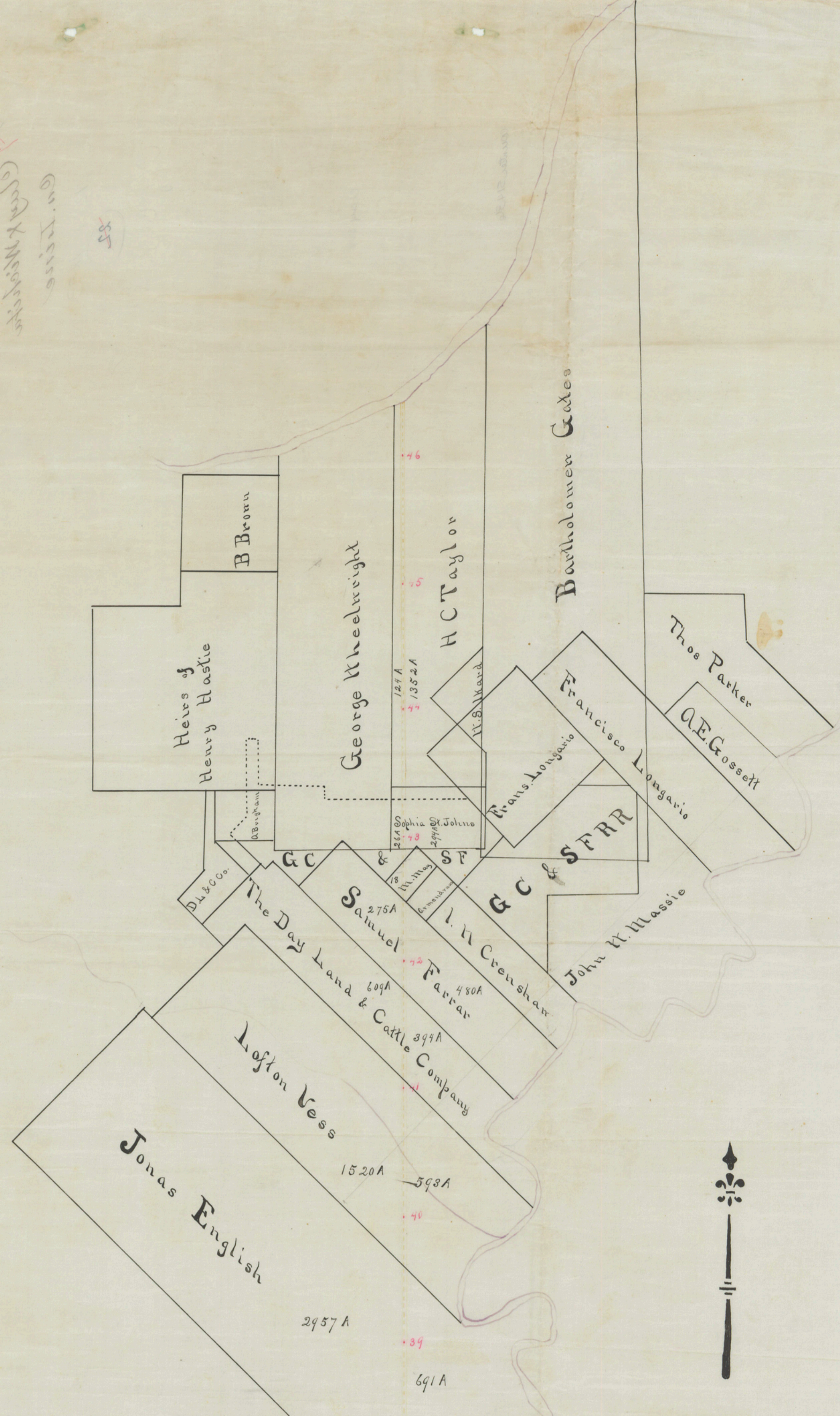
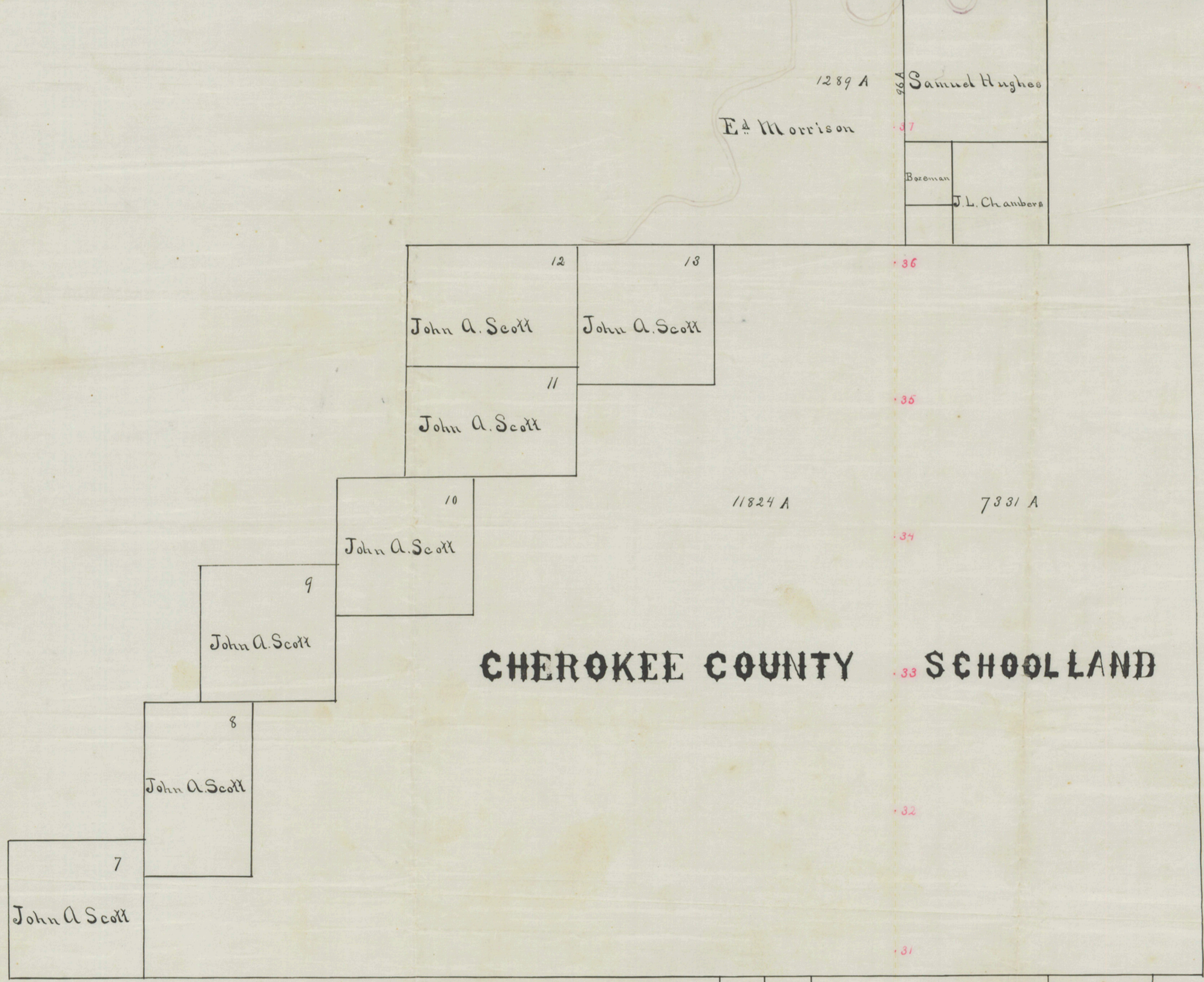


Gen. L. C. Williams
1893



WICHITA COUNTY **CLAY COUNTY**



CHEROKEE COUNTY SCHOOL LAND

We, S. C. Simon, County Surveyor of Wichita County, Texas, and A. W. Wetmore, County Surveyor of Clay County, Texas, do hereby certify that the above sketch truly and correctly shows the position of surveys and County Line represented thereon as determined from a careful survey of the same made upon the ground as prescribed by law.
 To certify which witness our hands this the 14th day of Nov. 1893.

The State of Texas }
 County of Wichita }
 Commissioner } The above sketch approved in open Court this the 14th day of Nov. 1893.

W. P. Sheen
 County Judge Wichita County

W. Brothers --- *J. G. Hardin*
 Com. Sect #1 --- Com. Sect #2

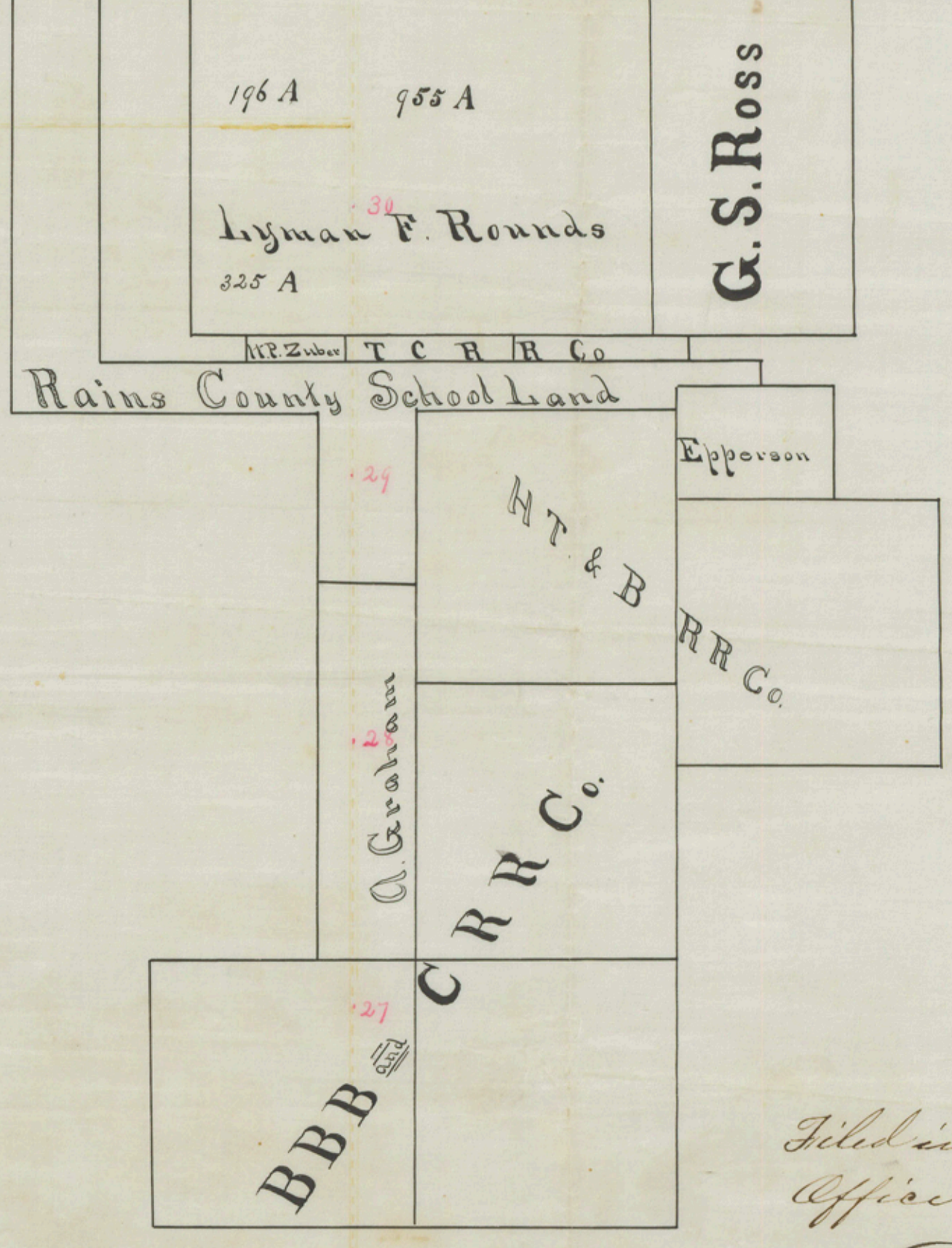
L. E. Speed --- *M. H. Lee*
 Com. Sect #3 --- Com. Sect #4

The State of Texas }
 County of Clay }
 Commissioner } The above sketch approved in open Court this the 14th day of Nov. 1893.

C. J. Barrott
 County Judge Clay County Texas

J. H. Briggs --- *E. W. Coleman*
 Com. Sect #1 --- Com. Sect #2

J. P. Muffee --- *A. J. Farmer*
 Com. Sect #3 --- Com. Sect #4



Rains County School Land

Filed in the General Land Office Dec. 4th 1893
H. G. ...
 Chief Clerk

