

Cochran Co Bdry #1

COCHRAN BAILEY  
COUNTY LINE

Received and filed in General Land  
Office January 6th, 1934.

J.H. Walker, Comm.  
C.F. Blucher, Ck.

53 SW 1/4 P. 207

Abstracted 6/27/1934. Vol. 57.

R. B. Newcome, Abstr.

~~(1)~~

not approved

7/16/32

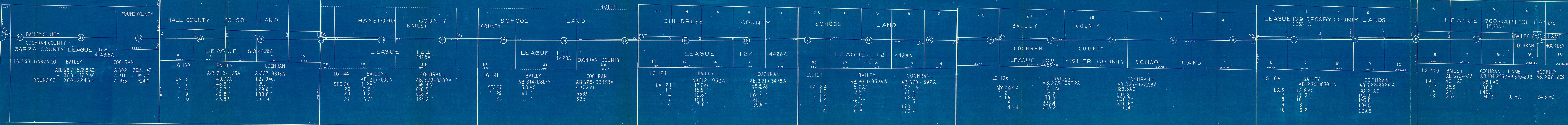
Gen. L. 21-115

FIELDNOTES AND SKETCH  
OF  
COCHRAN-BAILEY COUNTY LINE #1  
BY A.L. HARRIS

RECEIVED AND FILED IN GENERAL  
LAND OFFICE JANUARY 6, 1934

Court Decree with Lynn Garza Report

Received and filed in General Land Office Jan. 6th, 1934.



CONCRETE MARKER  
**COCHRAN-BAILEY COUNTY LINE**  
 A. L. HARRIS-SURVEYOR-LUBBOCK, TEXAS-1933.

Resume of balance sheet abstract-acreage of Cochran-Bailey County Line.

Description of land	Total Acres	Cochran County		Bailey Co.		Hockley Co.,		Lamb Co.	
		Abst. Ac.		Abst. Ac		Abst. Ac.		Abst. Ac.	
League 700	4526	134	2552	372	872	298	809	370	293
League 109	2063	322	992.9	270	1070.1				
League 106	4466	326	3372.8	275	1093.2				
League 121	4428	320	892	309	3536				
League 124	4428	321	3476	312	952				
League 141	4428	328	3346.3	314	1081.7				
League 144	4428	329	3333	317	1095				
League 160	4428	327	3303	313	1125				
League 163	4143.8	302	3021	387	572.8				
Garza Co. - -	233 <sup>a</sup>	311	185.7	388	47.3				
Young Co. - -	317 <sup>a</sup>	333	924 <sup>a</sup> 924 <sup>a</sup>	360	224.6				

OK.  
R.B.N.  
6/25/34

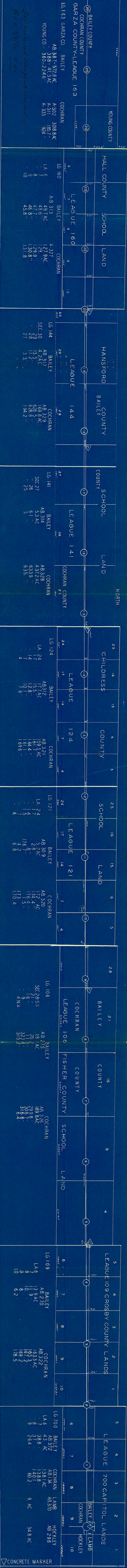
I, A.L.Harris, Licensed State Land Surveyor of Texas, Do hereby certify that this is a true and correct balance sheet giving abstract acreage division to the Counties as shown.

*A. L. Harris*

Licensed State Land Surveyor.

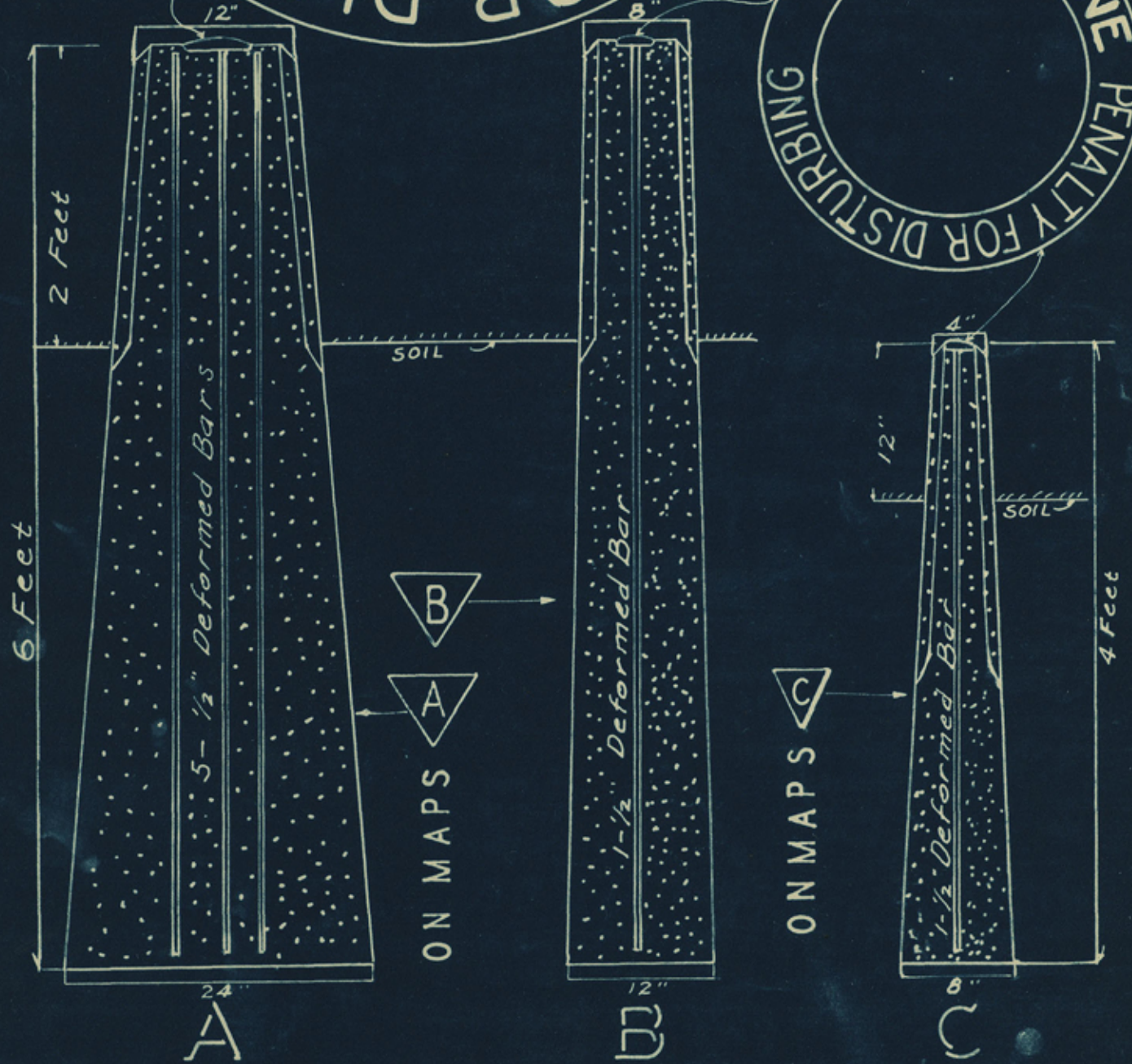
Lubbock Texas, May 3rd, 1934.

( Seal )



CONCRETE MARKER  
**COCHRAN-BAILEY COUNTY LINE**  
 A. L. HARRIS - SURVEYOR - LUBBOCK, TEXAS - 1933.

See corrected Blueprint recorded in  
 G.L.O. 6/9/34 R.B.X.



**CONCRETE COUNTY LINE MARKERS**

- A. FOR COUNTY CORNERS, NAMES TO BE SHOWN ON CAP
  - B. AT STATE HIGHWAY CROSSINGS
  - C. MILE END-COUNTY NAMES AND MILE NUMBER SHOWN
- CAPS ACTUAL SIZE

CONCRETE MIX 1-2-3

A. L. HARRIS  
LUBBOCK, TEXAS  
9-28-93

County 51456

MILE 24,

Beginning mile 24 at the end of mile 23, Thence West at 1418.8 vs iron pipe marker, at 1426 vs. center line of north-south graded road, at 1900.8 vs the end of mile 24.

MILE 25,

Beginning mile 25 at the end of mile 24, Thence West at 1900.8 vs the end of mile 25.

MILE 26 (part)

Beginning mile 26 at the end of mile 25, thence West at 603.7 vs. north-south fence line, at 614.2 vs to B size concrete marker with County Corner maker moulded into top, this marker is set in the Texas New Mexico State line 432.3 vs, south of Mile marker 126, and is 972 vs. south of the NW corner of Garza County League 163

\* \* \* \* \*

MILE 15,

Beginning mile 15 at the end of mile 14, Thence West 1484 vs. C concrete marker, at 1496 center line of north-south roadway, and the line between leagues 124 and 141, the NW corner of labor 24 Lg. 124 is north 110.5 vs- the NE corner of section 25 Lg. 141 is north 15.8 vs, at 1900.8 vs, the end of mile 15.

MILE 16,

Beginning mile 16 at the end of mile 15, Thence West at 1495.8 vs line between sections 25-26 at a point 14.6 vs. south of their north corner, at 1900.8 vs, the end of mile 16.

MILE 17,

Beginning mile 17 at the end of mile 16, Thence West at 1494 vs. line between sections 26-27 at a point 22 vs south of their north corner, at 1500.7 vs, iron pipe marker, at 1900.8 vs, the end of mile 17.

MILE 18,

Beginning mile 18 at the end of mile 17, Thence West at 1486.3 vs C concrete marker, at 1493.6 vs. line between Sections 27-28, at a point 29.3 vs south of their north corner, at 1900.8 vs, the end of mile 18.

MILE 19,

Beginning mile 19 at the end of mile 18, Thence West at 1494 vs. cross the line between sections 28-29 at a point 37.4 vs, south of their north corner, at 1900.8 vs, the end of mile 19.

MILE 20,

Beginning mile 20 at the end of mile 19, Thence West at 543 vs cross fence line, at 1486.8 vs iron pipe, at 1494 vs, the line between sections 29-30 at a point 43 vs. south of their north corner, at 1900.8 vs the end of mile 20.

MILE 21,

Beginning mile 21 at the end of mile 20, thence West at 108.3 vs, C concrete marker, at 119.3 vs, the line between Leagues 144-160, at a point 236 vs, south of the NE corner of labor 10 of Lg. 160, the NW corner section 30 is 47 vs, north of county line, at 1900.8 vs, the end of mile 21.

MILE 22,

Beginning mile 22 at the end of mile 21, Thence West at 1211.1 vs north-south fence line, and iron pipe marker, at 1900.8 vs, the end of mile 22.

MILE 23

Beginning mile 23 at the end of mile 22, Thence West at 1330 vs fence line and iron pipe marker, at 1322.6 vs line between leagues 160 and 163, the NW corner of labor 6 is 282 vs. north, the NE corner of Young County School land is 946.6 vs north, at 1900.8 vs, the end of mile 23.

11275  
8750  
17100



MILE 7;

Beginning mile seven at the end of mile 6, Thence West at 1411.8 vs. iron pipe marker, at 1419 vs. center line north-south road, half section corner on sections 9-16 is north 19.5 vs, at 1900.8 vs. the end of mile 7.

MILE 8:

Beginning mile 8 at the end of mile 7, Thence West at 1516.8 vs. iron pipe marker, at 1526 center north-south road and the line between sections 16-21, the half section corner is north 44.5 vs, at 1900.8 vs. the end of mile 8.

MILE 9:

Beginning mile 9 at the end of mile 8, Thence West at 1618.8 vs. set C concrete marker, at 1626 vs. center line of north-south road and the line between sections 28-21, the half section corner is 69.5 vs north, at 1900.8 vs. the end of mile nine.

MILE 10:

Beginning mile 10 at the end of mile 9, Thence West at 1025 vs. center of north-south road and the line between Leagues 106 and 121, the east corner of labors 4-5<sup>0</sup> Lg. 121 is south 32 vs, the half section line in section 28 Lg. 106 is north 88 vs, at 1037.6 vs iron pipe set under phone line, at 1900.8 vs the end of mile 10.

MILE 11;

Beginning mile 11 at the end of mile 10, Thence West at 124.9 vs. line between labors 5-6 at a point 18.5 vs north of their south corner, at 1125 vs, the line between labors 6-15 at a point 4.8 vs. north of their south corner, at 1900.8 vs. the end of mile 11.

MILE 12;

Beginning mile 12 at the end of mile 11, Thence West at 223.8 vs. the line between labors 14-17 at a point 9 vs. south of their north corner, at 1223 vs. the line between labors 17-24 at a point 22.6 vs. south of their north corner, at 1900.8 vs, the end of mile 12, iron pipe.

MILE 13,

Beginning mile 13 at the end of mile 12, Thence West at 513 vs. line between labors 12 Lg. 121 and labor 4 Lg. 124, their north corner being 36.8 vs. north, at 1312.5 vs. iron pipe, at 1320 vs. center of north-south road, north corner of labors 4-7 north 50 vs., at 1900.8 vs the end of mile 13.

MILE 14;

Beginning mile 14 at the end of mile 13, Thence West at 1419.3 vs line between labors 14-17 at a point 80 vs. south of their north corner, at 1900.8 vs. the end of mile fourteen.

FIELD NOTES of a Survey of the Cochran-Bailey County Boundary Line.

MILE 1:

Beginning mile one at a concrete marker set by me to mark the common corner of Hockley-Lamb-Bailey and Cochran counties, and is 30 miles true west of the common corner of Lubbock-Hale-Hockley and Lamb Counties that has been twice adjudged the common corners of said counties by the Supreme Court of Texas; this beginning corner is located in labor 9 of League 700 State Capitol Lands at a point 260 vs. west of its east line and 198.6 vs south of its north line, this is an A marker as set out in the sketch of markers attached hereto.

Thence West at 887 vs. pass 65.4 vs. south of a concrete pyramid, at 740 vs. line between labors 8-9 at a point 205.4 vs south of their north corner, at 1740 vs. line between labors 7-8 at a point 214.6 vs. south of their north corner, at 1900.8 vs. the end of mile one.

MILE 2:

Beginning mile 2 at the end of mile one, Thence West at 839 vs. cross line between labors 6-7 at a point 223.8 vs. south of their north corner, at 1859 vs. north-south fence line, at 1862 vs line between leagues 700 and 109, at a point 28.5 vs. south of the NE corner of labor 10 Lg. 109, and 233. south of the corner of labors 5-6 Lg. 700, at 1870 vs. iron pipe marker, at 1900.8 vs. the end of mile 2.

MILE 3:

Beginning mile 3 at the end of mile 2, Thence West at 1004.3 vs. line between labors 9-10 at a point 39.6 vs south of their north corner, at 1900.8 vs the end of mile 3.

MILE 4:

Beginning mile 4 at the end of mile 3, Thence West at 103.3 vs. line between labors 8-9 at a point 50.7 vs. south of their north corner, at 1103.3 vs. line between labors 7-8 at a point 61.8 vs. south of their north corner, at 1900.8 vs. the end of mile 4.

MILE 5:

Beginning mile 5 at the end of mile 4, Thence West at 203. vs. the line between labors 6-7 at a point 72.9 vs. south of their north corner, at 1203.4 vs. north-south fence line and line between leagues 109 and 106, at a point 30.5 vs. north of the half-section marker on section 4 in Lg. 106, and at a point 84.2 vs, south of the NW corner of labor 6 in league 109, a concrete C marker set at 1197.4, at 1900.8 vs the end of mile five.

MILE 6:

Beginning mile 6 at the end of mile five, Thence West at 318.4 vs the line between the half section of 4, at 1319.4 vs. the line between sections 4-9, at a point 5.5 vs. north of the half section corner, at 1900.8 vs. the end of mile six.

In the matter of Permanently establishing the County Boundary line between COCHRAN and BAILEY Counties, Texas.

FOREWORD:

The Supreme Court of the State of Texas, in Lubbock VS Hale County, and in Lynn VS Garza County, established the Common corner of Lubbock, Heckley, Hale and Lamb Counties, from which location I ran a true west line 30 miles and located the common corners of Lamb, Heckley, Cochran and Bailey, and place a large concrete marker as is shown on the blue print hereto attached designated A, and then from observations on the polar star, ran a secant line, as set out in the United States surveyors manuals, west to the intersection with the New Mexico State Line as marked.

Calculations based on the Geographic positions of the northeast and southeast corners of Lubbock County, from which I have made careful transit surveys of the east, south and west lines of Lubbock County, and same shows the

Hale-Lubbock-Heckley-Lamb common corner to be,

Long.  $102^{\circ}08'07.520''$   
Lati.  $33^{\circ}49'29.182''$

Lamb-Heckley-Cochran-Bailey common corner to be,

Long.  $102^{\circ}36'25.120''$   
Lati.  $33^{\circ}49'29.182''$

Cochran-Bailey-New Mexico corner to be,

Long.  $103^{\circ}00'36.320''$   
Lati.  $33^{\circ}49'29.182''$

I was employed jointly by both Cochran and Bailey Counties to survey this boundary line and to mark it with 2 inch iron pipe and concrete markers as shown on the attached print, the location of the concrete markers are shown by triangles on the map at the distances agreed upon, and are designated by letter as to size-type.

I, A.L.Harris, Licensed State Land Surveyor of Lubbock Texas, do hereby certify that the herein described survey of the Cochran-Bailey County boundary line, was actually made by me on the ground, according to law, on the date and with the chain carriers duly qualified, and that all the corners, lines, boundaries and the marks of the same, whether natural or artificial, are truly and accurately described and set forth in the plat and field notes hereto attached, and a record copy is delivered to the County Clerk of each county and one to the Commissioner of the General Land Office, at Austin, Texas.  
Surveyed August, Sept. 1933. C.T. Burns, Joe Tupman, Chaignmen.

*A. L. Harris*

Licensed State Land Surveyor,  
District Surveyor Lubbock Land District of which  
Cochran County is a part.

THE STATE OF TEXAS

COUNTY OF Cochran

I, D. J. Smith County Clerk of Cochran County, Texas, do hereby certify that the foregoing, consisting of typewritten field notes and a blue print map, and being a report of A.L. Harris, Surveyor, who surveyed and marked the boundary line between Cochran County, and Bailey County, together with its certificate of authentication, was filed for record in duplicate in my office this the 28 day of Dec A.D. 1933, and duly recorded the same day as Special County Line Volume No. 1, one copy for the Clerks records and one copy for the Surveyors Records.

Witness my hand and the official seal, at my office in Marton Texas, this the 28 day of Dec A.D. 1933.

D. J. Smith

County Clerk Cochran County, Texas.

(Seal)

THE STATE OF TEXAS           |    In the County Court of Cochran  
                                      |                                    County, Texas, Nov. Term, A.D. 1933.

In the Matter of Establishing the Cochran and  
Bailey County Boundary line.

This the 28 day of Dec. A.D. 1933, came on to be considered the report, consisting of field notes and plat, of A.L.Harris, Surveyor, who heretofore having been employed jointly by two said counties to survey and mark said boundary line, and the Court having examined the same, it is ordered by the Court that said report be and is hereby in all respects approved, and said report has been duly filed for record with the County Clerk of this County.

(Seal) J. L. Winder  
County Judge Cochran County, Texas.

The State of Texas, |  
County of Cochran   | I, D. P. Smith, Clerk of the County Court of said county, do hereby certify that the above and foregoing instrument in writing is a full, true and correct copy of an order of the County Court of said County, approving the report of A.L.Harris, Surveyor, in the matter of establishing the boundary line between Cochran County and Bailey County, as same was filed for record the 28 day of Dec A.D. 1933, and recorded in Vol. 25 PP \_\_\_\_\_ Minutes County Court of said County, and also remains on file in my office among the papers of said report.

Witness my hand and seal of said court, at my office in \_\_\_\_\_ Texas, this the 28 day of Dec A.D. 1933.

D. P. Smith  
Clerk of County Court Cochran County Texas.

(seal)

THE STATE OF TEXAS )  
COUNTY OF BAILEY )

IN THE COUNTY COURT OF BAILEY COUNTY,  
TEXAS, NOVEMBER TERM, 1933.

This the 25th day of November A. D. 1933, came on to be considered the report, consisting of field notes and plat, of A. L. Harris, Surveyor, who heretofore having been appointed jointly by the Commissioner's Courts of Bailey and Cochran Counties to Survey and mark the common boundary line between said counties, and the court having examined the same, it is ordered by the court that said report be and is hereby in all respects approved, and said report has been filed for record in the County Clerks Records of this county.

(Signed) J. E. Adams

County Judge, Bailey County,  
Texas.

THE STATE OF TEXAS )  
COUNTY OF BAILEY )

I, J. B. Burkhead, Clerk of the County Court of said county, do hereby certify that the above an foregoing instrument in writing is a full, true and correct copy of an order of the County Court of said County, approving the report of A. L. Harris, Surveyor, in the matter of establishing the true boundary line between Bailey County and Cochran County; as same was filed for record the 25th day of October, A. D. 1933, and recorded in Vol. 15, Page 172, Minutes of County Court of said County, and also remain on file in my office among the papers of said report.

Witness my hand and seal of office, in Muleshoe, Texas, this the 28th., day of December, A. D. 1933.

J. B. BURKHEAD, COUNTY CLERK,  
BAILEY COUNTY, TEXAS.

By 

THE STATE OF TEXAS )  
COUNTY OF BAILEY )

I, J. B. Burkhead, County Clerk  
of Bailey County, Texas, do hereby certify that the foregoing  
is a true correct copy of a typewritten and blue print map re-  
port of A. L. Harris, Surveyor, who was duly authorized to sur-  
vey and mark the boundary line between Bailey County and Coch-  
ran County, together with its certificate of authentication,  
was filed for record in duplicate in my office 5th., day of  
October, A. D. 1933, and duly recorded the same day in Volume  
25, Page 388, Deed Records of Bailey County, Texas.

Witness my hand and the official seal, at my off-  
ice in Muleshoe, Texas, this the 28th., day of December, A. D.  
1933.

J. B. BURKHEAD, COUNTY CLERK,  
BAILEY COUNTY, TEXAS.

BY *Edward M. Williams* DEPUTY.

Boiley-Cochran Line.

Abstracted 6/27/34.

