

G10

Cochran Co Bdry #2



# COCHRAN-YOAKUM LINE

Received and filed in General Land Office on December 15th, 1934.

J.H. Walker  
Comm  
C.F. Blucher  
Cek.

Part 12-15-34  
Blucher

*Handwritten note:*  
Note - see page 100  
with 21/25 in book - Terry Report

OK  
Blucher  
1/8/35

Abstracted 2-13-1935  
Vol 57

Number 51466

*FIELDNOTES & SKETCH  
OF  
COCHRAN-YOAKUM CO. LINE  
BY A.L. HARRIS*

*RECEIVED AND FILED IN GENERAL  
LAND OFFICE      DECEMBER 15, 1934*

*Court Decree with Lynn-Garza Report*

*Received and filed in General Land Office on Dec. 15th, 1934.*

*J.H. Walker, Comm. by C.F. Bluskey, clk.*

## Cochran-Yoakum Boundary Line Survey Report

Page 5

Sec.	Part	Blk.	File	T. Ac.	Cochran Co.		Yoakum Co.	
					Abst.	Ac.	Abst.	Ac.
9	S $\frac{1}{2}$	Q	118209	320	313	281.5	1063	38.5
8	S $\frac{1}{2}$	Q	118204	320	312	280.7	1062	39.3
7	all	Q	72088	640	226	598.5	438	41.5
6	all	Q	72089	640	227	596.6	439	43.4
5	all	Q	74043	640	239	594.5	445	45.5
4	all	Q	74042	640	238	592.5	444	47.5
3	all	Q	77957	640	292	631.4	481	8.6
2	all	Q	73881	640	223	621.4	435	18.6
8	all	R.C. Burns	10480	601.5	338	598.7		2.8

\*  
\*\*\*\*\*  
\*

YOAKUM - COCHRAN COUNTY BOUNDARY LINE REPORT Page 4  
ACREAGE DIVISION

Sec.	Part	Blk	File	T. Ac.	Cochran Co.,		Yoakum Co.	
					Abst.	Ac.	Abst.	Ac.
1	all	X	72994	757 $\frac{1}{2}$		40. (Terry 39.2	4. Hockley 672.3)	
10	all	G	72933	379.3		361.5		17.8
9	all	G	72934	640	163	617.6	419	22.4
8	all	G	72164	640	267	607.2	455	32.8
7	all	G	72166	640	269	609.3	457	30.7
6	all	G	72165	640	268	609.5	456	30.5
5	all	G	72103	640	241	608.3	447	31.7
4	all	G	72102	640	240	606.4	446	33.6
3	all	G	72103	640	246	604.5	450	35.5
2	all	G	72109	640	247	602.6	451	37.4
1	all	G	72110	640	248	600.8	452	39.2
8	all	P	72105	640	243	576.4	448	63.6
9	all	P	72107	640	245	612.9	449	27.1
10	all	P	72129	640	259	613.9	453	26.1
11	all	P	⑧ 72346	640	301	614.9	645	25.1
12	all	P	73931	640	200	615.9	427	24.1
13	all	E	73930	640	199	616.5	426	23.5
14	all	P	73933	640	202	617.4	429	22.6
15	S $\frac{1}{2}$ N $\frac{1}{2}$	P	73932 112075	320 320	201 305	297.7 320.	428	22.3
8	all	L	74010	640	169	619.1	421	20.9
9	all	L	74011	640	170	620.	422	20.
10	S $\frac{1}{2}$	L	75897	320		300.7	461	19.3
11	all	L	75725	640	286	621.5	458	18.6
12	all	L	75726	640	287	622.3	459	17.7
13	S $\frac{1}{2}$	L	75896	320		303	460	17.
14	all	L	73040	640	235	623.6	799	16.4
15	all	L	73037	640	232	624.3	798	15.7
16	all	L	72687	585.3	175	570.3	423	15.
17	all	L	72695	583.6	178	569.1	424	14.5

- 24 Beginning mile twenty-four at the end of mile twenty-three, thence west at 1241 vs, the calculated line between sections 5 and 6, in all 1901 vs, to iron post marker, the end of mile twenty-four.
- 25 Beginning mile twenty-five at the end of mile twenty-four, thence west at 394 vs, the calculated line between sections 4 and 5, at 1439 vs, the calculated line between sections 3 and 4, at 1568 vs, fence line north-south that corners and turns east at 262 vs, south of county line, in all 1901 vs, to iron post marker, the end of mile twenty-five.
- 26 Beginning mile twenty-six at the end of mile twenty-five, thence west at 577 vs, the calculated line between sections 2 and 3, at 1888 vs. blowed out road, in all 1901 vs, to iron post marker, the end of mile twenty-six.
- 27 Beginning mile twenty-seven at the end of mile twenty-six, thence west 910 vs, the calculated line between sections 2 Block C, and 8 R.C. Burns, at 1314 vs, center line of State Line graded roadway angle of same  $N1^{\circ}08'E$ , at 1327 vs, set iron post marker, from whence New Mexico land survey marker bears  $S1^{\circ}08'W$  98.5 vs, Texas-New Mexico line marker bears  $N1^{\circ}08'E$  645.2 vs, marked M-96, this iron post marker is the west common corners of Yoakum and Cochran Counties.

I, A.L. Harris, Licensed State Land Surveyor, do hereby certify that the foregoing described survey was actually made by me on the ground, according to law, on the days and with the chain carriers aforesaid, duly qualified, and that all the corners, lines and boundaries of same, whether natural or artificial, are truly and correctly described and set forth in the foregoing plat and field notes, attached hereto and made a part hereof.

C.F. Burns, Jack Wedley, chain carriers. Surveyed July 1934.

*A. L. Harris*  
Licensed State Land Surveyor.

\* Note:- The iron post markers herein called for are made of 2 inch galvanized iron pipe from 3 to 4 feet long, and are capped with US specification bronze tablet indented "County Line, penalty for disturbing" and steel punch lettered showing the county names, this cap is securely fastened to  $\frac{1}{2}$  inch deformed steel rod which is inserted into the pipe which was filled with a mixture of half sand/cement concrete; these pipe markers are set in the ground leaving about 8 inches above ground.

Received and filed in General Land Office on  
December 15th, 1934. *C.F.P. J.H. Walker, Commr.*  
*C.F. Blucher, Clk.*

\*\*\*  
\*\*\*\*  
\*\*\*  
\*

- 9 Beginning mile nine at the end of mile eight, thence west at 13.7 the calculated line between section 9 and 10, at 1770 vs, the calculated line between sections 10 and 11, at 1901 vs. set iron post marker the end of mile nine.
- 10 Beginning mile ten at the end of mile nine, thence west at 25 vs. cross abandoned north-south sand road-trail, at 1250 cross similar road, at 1601 vs, the calculated line between sections 11 and 12, at 1901 vs. set iron post marker, the end of mile ten.
- 11 Beginning mile eleven at the end of mile ten, thence west at 1406 vs. the calculated line between sections 12 and 13, at 1901 vs, the end of mile eleven, marked with iron post marker.
- 12 Beginning mile twelve at the end of mile eleven, thence west at 1188.2 vs, the calculated line between sections 13 and 14, at 1776.2 vs, north-south new wire fence line, iron pipe set to mark the NE corner of section 33 Block D is south 77 vs, under said fence, in all 1901 vs, to iron post marker, the end of mile twelve.
- 13 Beginning mile thirteen at the end of mile 12, thence west at 948 vs, the calculated line between sections 14 and 15, at 1901 vs. set iron post marker, the end of mile thirteen.
- 14 Beginning mile fourteen at the end of mile thirteen, thence west at 686 vs, the calculated line between sections 15 Block P and section 8 Block L, at 1901 vs, set iron post marker, the end of mile fourteen.
- 15 Beginning mile fifteen at the end of mile fourteen, thence west at 403.2 vs, the calculated line between sections 8 and 9, at 1901 vs, the end of mile fifteen, marked by iron post marker.
- 16 Beginning mile sixteen at the end of mile fifteen, thence west at 1679 vs, the calculated line between sections 10 and 11, at 1901 vs, set iron post marker, the end of mile sixteen.
- 17 Beginning mile seventeen at the end of mile sixteen, thence west at 1368 vs, the calculated line between sections 11 and 12, at 1570 vs., cross fence line, in all 1901 vs, to iron post marker, the end of mile 17.
- 18 Beginning mile eighteen at the end of mile seventeen, thence west at 1009 vs, the calculated line between sections 12 and 13, at 1766.2 vs, pass 53.7 vs, north of 2 inch iron pipe set to mark the north line of block D sections, in all 1901 vs, set iron post marker, the end of mile 18.
- 19 Beginning mile nineteen at the end of mile eighteen, thence west at 631 vs, the calculated line between sections 13 and 14, at 1753 vs, pass 57.7 vs, north of 2 inch pipe set to mark the north common corners of sections 39 and 40 Block D, in all 1901 vs, iron post marker, the end of mile nineteen.
- 20 Beginning mile twenty at the end of mile nineteen, thence west at 338 vs, the line between sections 14 and 15, as calculated, at 1729.8 vs. the calculated line between sections 15 and 16, at 1753 vs, pass 56.4 vs north of 2 inch iron pipe, at 1831.2 fence line, in all 1901 vs, to iron post marker the end of mile twenty.
- 21 Beginning mile twenty-one at the end of mile twenty, thence west at 1305 the calculated line between sections 16 and 17, at 1901 vs, the end of mile twenty-one, marked with iron post marker.
- 22 Beginning mile twenty-two at the end of mile twenty-one, thence west at 923 vs, wire fence line marking the line between sections 17 block L and section 9 Block Q, the SW corner said section 17 is 55 vs, south, at 1752 vs, pass 55 vs, north of 2 inch iron pipe, at 1849.4 vs, the calculated line between sections 9 and 8, in all 1901 vs, to iron post marker, the end of mile twenty-two.
- 23 Beginning mile twenty-three at the end of mile twenty-two, thence west at 1026.3 vs, the calculated line between sections 7 and 8, at 1133 vs, cross wire fence line, in all 1901 vs, to iron post marker, the end of mile twenty-three. *Counter 51471*

*Dechran W. Bdry. Inv. #2*

**RECEIVED**

**MAY 17 1939**

**REFERRED TO MAP**

*Counter 51470*

*1996*

## FOREWORD:-

In the suit Lynn Co., et, VS Garza Co., et al, the decree of the court was that the common corner of Hockley-Cochran-Terry and Yoakum counties was not marked on the ground, but should be set thirty miles due west of the SW corner of Lubbock County, as marked by J.B. Jones, and having been employed by Terry and Hockley counties to survey and mark their common boundary line in accordance with said decree, I placed an A concrete corner for said common corner at a point 30 miles due west of the said SW corner of Lubbock County as marked by said Jones which is located in section 1 Block X Public School Lands at a point that is 147 vs. east and 157 varas north of its SW corner; from this county corner I began and ran a true west line to the Texas-New Mexico State line to form the south line of Cochran and the north line of Yoakum county; after observations on the polar star at elongation I projected this line west observing instructions given by the US department for laying down a secant, broken at each six mile interval.

- 1 Beginning mile one at the common corners of Hockley-Cochran-Terry and Yoakum counties located as above stated; Thence west at 147 cross the calculated line between sections 1 Block X and 10 Block G, at 888 vs cross the calculated line between sections 9 and 10, at 1027.2 vs, cross north-south fence line, at 1811.7 vs. pass 139 vs. north of 4 inch well casing set by M.E.Ragsdale for the NW corner of Block K, and in the south line of Block G as set by Ragsdale, at 1833 vs. pass 2040 vs. north of the Rhodes-Fisher corner which was set to mark the SE corner of section 22 Block D; this corner is now marked by succor rod set about 1 vs., east of north-south fence line and has 3 sand stones around it, and is located in very rough blown out sand-shinnery sand-hill land; at 1901 vs. set iron post marker (\* see note for description of marker) the end of mile one.
- 2 Beginning mile two at the end of mile one, Thence west at 1243.7 vs. the calculated line between sections 7 and 8, at 1901 vs, set iron post marker, for the end of mile two.
- 3 Beginning mile three at the end of mile two, Thence west at 580.6 vs the calculated line between sections 6 and 7, at 1809 vs. the calculated line between sections 5 and 6, at 1874 vs. north-south fence line which intersects east-west fence line 142 vs. south of county line, a pile of small rocks is under fence 3.5 vs. east of the intersection of fences, which are probably in the location made by Ragsdale for the south common corner of sections 5 and 6, at 1901 vs, set iron post marker, the end of mile three.
- 4 Beginning mile four at the end of mile three, thence west at 1128.2 vs. the line between sections 4 and 5, at 1901 vs. set iron post marker for the end of mile four.
- 5 Beginning mile five at the end of mile four, thence west at 438.5 v the calculated line between sections 3 and 4, at 1641 vs, the calculated line between sections 2 and 3, in all 1901 vs, set iron post marker for the end of mile five.
- 6 Beginning mile six at the end of mile five, thence west at about 135 vs. pass about 50 vs. south of high sand hill, at 934.5 vs, the calculated line between sections 1 and 2, at 1901 vs. set iron post marker for the end of mile six.
- 7 Beginning mile seven at the end of mile six, thence west at 220.3 v the calculated line between section 1 block G and section 8 block P, at 1901 vs. set iron post marker the end of mile seven.
- 8 Beginning mile eight at the end of mile seven, thence west at 131 v the calculated line between sections 8 and 9, at 163 vs, fence line, this fence line intersects east-west fence line 205.8 vs south of county line, at 1797 vs pass about 210 vs north of fence corner, fence east and south, at 1901 vs. set iron post marker the end of mile eight.



April 20, 1939

Mr. A. L. Harris  
Licensed State Land Surveyor  
Lubbock, Texas

Dear Mr. Harris:

Upon an examination of the field notes of the survey of the Cochran-Yoekum boundary line, I find that page No. 1 is missing.

Our copy begins page 2 (9)- beginning mile nine at the end of mile 8 etc.

It will be appreciated if you will send a certified copy of page No. 1 in order that we may have the complete field notes in our file.

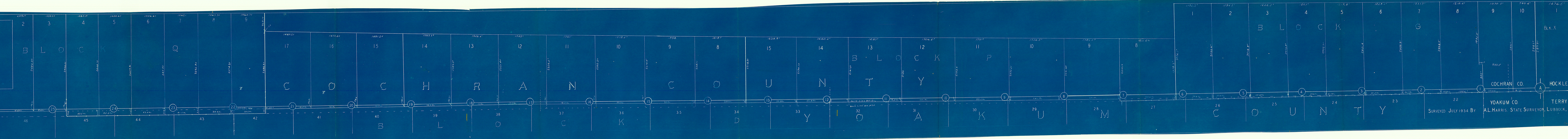
Sincerely yours

BASCOM GILES  
COMMISSIONER OF GENERAL LAND OFFICE

WS:caf

YOAKUM-COCHRAN LINE

NEW MEXICO  
TEXAS



SURVEYED JULY 1934 BY  
A.L. HARRIS, STATE SURVEYOR, LUBBOCK, TEXAS.

YOAKUM CO.  
TERRY CO.

COCHRAN CO.  
HOCKLEY CO.

NORTH