

Coke County Bd³

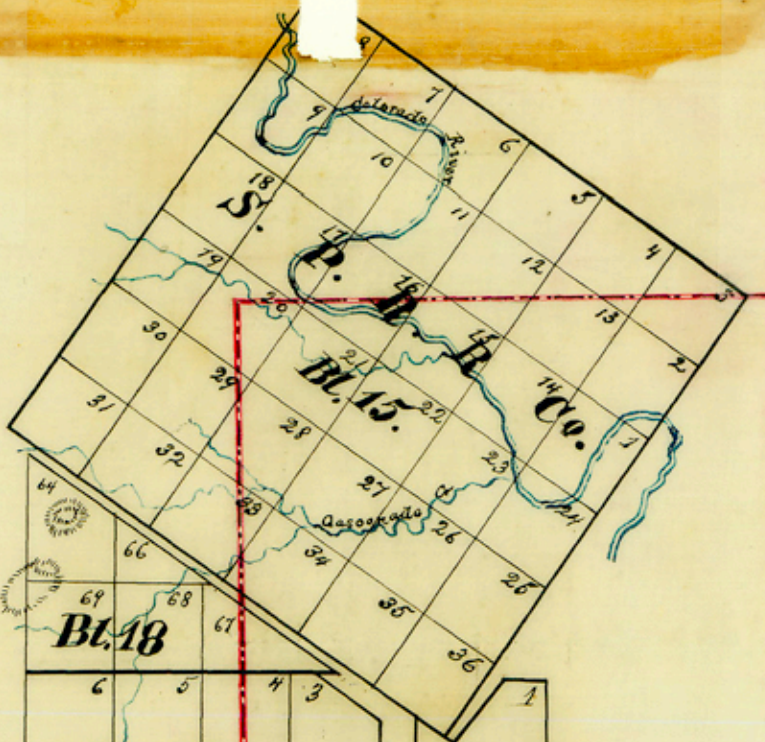
~~10~~ 3

See inclosed reports for dates of
filing

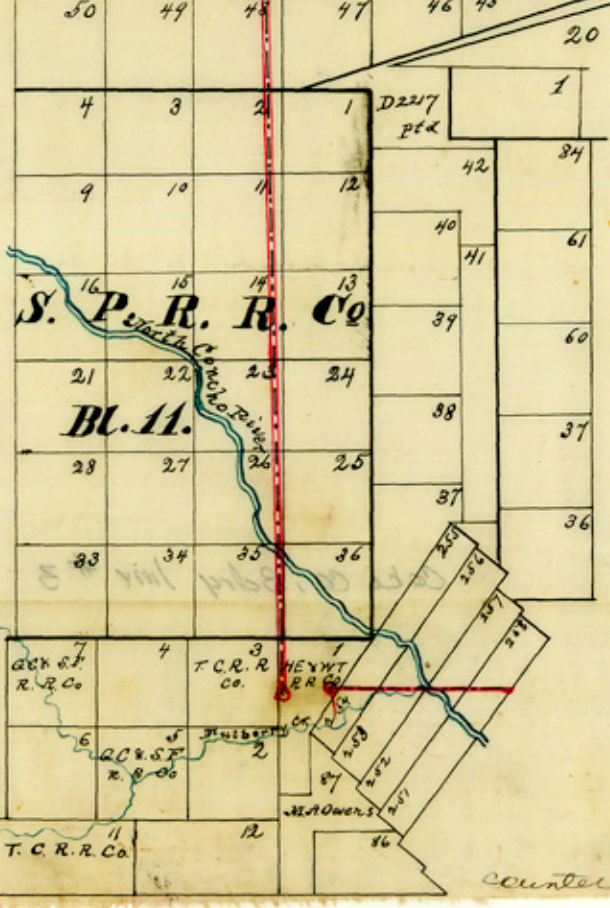
Abstract corrected on west line
Oct 2nd 1891 Beaumont

Abstract corrected on South
and North lines Apr. 8/92
Beaumont

Became a separate
Land District March
7th 1892 Beaumont



6	5	4	3	2	1
27	28	27	26	25	2
	65	66	67	68	69
73	74	75	76	77	78
116	117	118	119	120	121
H. & T. C. R. R. Co.					
141	142	143	144	145	146
Bl. 2					
168	167	166	165	164	163
197	196	195	194	193	192
220	221	222	223	224	225
251	250	249	248	247	246
268	269	270	271	272	273
295	296	297	298	299	300
3	4	5	6	7	8
30	29	28	27	26	25
T. & P. R. R. Co.					
35	36	37	38	39	40
Bl. W.					
50	49	48	47	46	45



1 Witness my hand and the Seal of said Court
2 affixed at Office in San Angelo this the 14th
3 day of May AD 1891

By Duggan Clerk
County Court Tom
Green County Texas
By John White Deputy.

4
5
6
7
8
9
10
11
12
13
14
15
16
17
18
19
20
21
22
23
24
25
26
27
28
29
30
31
32

1 from which Golgotha Mt. bears $N45^{\circ}W$
2 Sugar loaf Mt. $S87^{\circ}\frac{3}{4}E$, the East point of
3 a mountain bears $S30^{\circ}E$.

4 Surveyed from March 13th to 14th 1891
5 inclusive

6 I. G. Darnelley } Chain
7 H. M. Clausen } Corners

8 Respectfully Submitted

9 Louis L. Farr
10 Special Surveyor

11 Robert Lee Coke Co. Texas May 8th 1891.

12 I, J. R. Patterson, County Surveyor
13 of Coke Co. Texas, do hereby certify
14 that I have examined the within and
15 foregoing report plat and field notes
16 made by Louis L. Farr Special
17 Surveyor, and the same are a correct
18 report and field notes of the West
19 line of Coke Co. Texas as it was
20 run by said Farr and myself from
21 March 13th to 14th 1891.

22 J. R. Patterson
23 Co. Sur. Coke Co. Texas

24 The State of Texas }
25 County of Tom Green } I, C. W. Duggan, Clerk of the County
26 Court in and for Tom Green County do hereby certify that the above
27 and foregoing is a true and correct copy of the field notes and
28 sketch now on file in this office, of a survey made of the West line
29 of Coke County by Special Surveyor Louis L. Farr of Tom
30 Green County and J. R. Patterson Co. Surveyor
31 of Coke Co. In testimony whereof,
32

1 bears East 100 varas at 20 miles and 1140
 2 varas passed 20 varas west of base of rock
 3 on point of a mountain at 21 miles set
 4 stone monument in valley marked as
 5 above and 21 M at 22 miles set stone
 6 monument marked as above and 22 M
 7 at 23 miles set stone monument marked
 8 as above and 23 M from which Catlett's
 9 ranch house bears S 57 W at 23 miles and
 10 692 varas the N.E. Cor. of Sec. No. 23 Block
 11 No. 11 bears E. 55 varas at 23 miles and 1590
 12 varas set stone monument on West side
 13 of San Angelo and Montrose road marked
 14 Co. L at 23 miles + 1800 varas Cross
 15 road to Catlett's ranch at 24 miles set stone
 16 monument marked on East side W L C Co
 17 24 M and on West side E L T & Co. 24 M
 18 at 25 miles set stone monument marked
 19 as above + 25 M at 25 miles and 757 varas
 20 the S.E. Corner of Survey No 26 BK 11
 21 bears East 27 varas at 25 miles and 870
 22 varas set stone on the North bank of
 23 the North Concho from which a China
 24 birches in diameter marked \times bears
 25 S 47 $\frac{3}{4}$ W 4 varas a Willow birches in diameter
 26 marked \times bears S 39 $\frac{3}{4}$ E 5 varas at 840 varas
 27 the South bank of North Concho at 25
 28 miles + 921 varas Cross Wadi's Pasture
 29 fence at 26 miles set stone monument
 30 marked as above and 26 M at 27 miles
 31 set stone monument in Valley of Mulberry
 32 Cr. marked S.W. Cor. Coke Co & N.T.T. Co.

1 above and 12 M at 12 miles and 550
2 crosses the South line of Section No. 195
3 Block No 2, N. T. C. R. R. Co. 1237 rods
4 East from its S.E. Corner at 13 miles
5 monument marked as above and 13 M
6 at 13 miles and 265 rods a mesquite 12
7 inches in diameter marked \equiv on N + S
8 sides at 13 miles and 430 rods pass
9 30 rods West from Mr. Coplands
10 house at 13 miles and 481 rods cross
11 Coplands fence at 13 miles and 577 + 597
12 rods cross roads near forks at 14
13 miles set stone monument marked as
14 above and 14 M at 15 miles set stone
15 monument marked as above and 15 M
16 at 15 miles and 760 rods 3 live Oaks in a
17 clump marked \equiv on N + S sides at 15
18 miles and 768 rods cross a fence
19 at 16 miles set a stone monument
20 marked as above and 16 M on the
21 South slope of a draw of Walnut Cr. at 17 miles
22 set stone monument marked on East
23 side W L C Co 17 M + on West side F
24 L T A Co. 17 M at 18 miles set stone
25 monument marked as above and 18 M
26 at 19 miles set stone monument
27 marked as above and 19 M at 19 miles
28 and 590 rods cross a fence at 20
29 miles set stone monument at foot of
30 Mountain marked as above and
31 20 M at 20 miles and 617 rods the
32 N.E. Corner of Survey No. 2 Block No 11 S.P.R.R. Co.

1 go into bed of last named Creek and
 2 follow up same 60 varas at 3 miles
 3 and 593 varas Cross Elwood's fence
 4 20 varas S 55 E from the S. Corner of
 5 Survey No. 33 R.R. No. 15 S.P.R.R. Co. at
 6 3 miles and 1327 varas Mt Oyster bears
 7 West at 4 miles set monument
 8 marked as above and 4 M at 5 miles
 9 set monument marked as above
 10 and 5 M at 6 miles set monument
 11 marked as above and 6 M at 6 miles
 12 and 118 varas Cross fence at 6 miles
 13 and 716 varas Cross a road at 7 miles
 14 monument marked as above and
 15 7 M at 7 miles and 1044 varas Cross
 16 road leading into Holmes Canyon, Course
 17 East, at 8 miles set stone monument
 18 marked as above and 8 M 100 varas
 19 North from the foot of a high Mt.
 20 at 8 miles and 1565 varas Cross a
 21 branch at 9 miles set stone monument
 22 on West bank of a branch marked
 23 as above and 9 M at 9 miles and 557 varas
 24 Cross Scott's pasture fence at 10
 25 miles set stone monument marked on
 26 East side W. L. C. Co. 10 M + on West side
 27 E L T & Co 10 M at 10 miles and 1760 varas.
 28 Cross road to Smith's ranch at 11 miles
 29 set stone monument marked as
 30 above and 11 M from which Smith's
 31 ranch house bears N 78 E about 600 varas
 32 at 12 miles set stone monument marked as

San Angelo, Tom Green Co. Texas
April 23rd 1891.

To the Hon. Commissioners Court of Tom
Green County:

In obedience
to an order of your Honorable Court, dated
February 12th 1891, appointing me special
surveyor to assist in surveying and estab-
lishing the West boundary line of Coke
County, I proceeded to the N.W. Corner of
Coke County and met J. R. Patterson, Sur-
veyor for Coke County, on the 13th day
of March A.D. 1891 and we jointly proceeded
to survey as follows, to wit:

Beginning at a stone monument
18 inches high marked N.W. Cor. C Co MARCH
11th 1891 and N.E. Cor. T. A. Co. from
which Cedar Mt. bears S 59° E about 3 1/2 miles
and a high Mountain bears S 24 1/4° E.

Thence South at 1500 vrs. Cross a
road at 1900 vrs stone monument marked
W.L. C. Co 1 M on East side and E L T. A. Co.
1 M on West side at 1 mile and 1565 vrs
bluff bank of a branch at 2 miles set
stone monument marked as above
and 2 M at 2 miles and 500 vrs
Cross Gasconade Cr. at 2 miles and
1700 vrs cross another prong of
Gasconade Creek at 3 miles set
stone monument marked W.L. C. Co 3 M
on East side and E L T A Co 3 M on
West side at 3 miles 440 vrs

3/ Co Body line be
tween Coke on the

West of Tom Green
on the East

Reported there is no
connection given
with surveys at the
beginning or ending
of the line and that
three surveys called
for on the line when
all the territory is
occupied with lines
of 640 acres each

May 16th / 91 Beaumont

See Corrected Co Body
filed Sept 30th / 91

Beaumont

Filed May 16th / 91