



1741

The State of Texas In the
County of Coke Hon. Court
Court of Coke
Co. Tex. At
Special Term

Now comes J. R. Patterson County
surveyor in and for Coke Co. -
Texas, and makes the following
report as follows to wit:

Report of a survey of the North
line of Coke County Texas, made
pursuant to an order of your
Honorable Court made at Regular
term Feb. 1881 viz: It is ordered
by the Court that J. R. Patterson
be appointed to establish the
N. and W. Boundary lines of
Coke Co. Said Patterson to begin
at the N. W. Cor. of Rummel's Co.
and to find and identify said
N. W. Cor. of Rummel's Co. as di-
rected by the Commissioners of the
General Land Office. The said
Patterson in surveying the
County lines, shall establish such
lines by monuments of stone
or some other material as the
Statutes prescribe. In surveying
said lines the said Patterson
shall comply with the law in
all respect governing the

1 establishment of county lines
 2 Said Patterson to enter into bond
 3 in the sum of one thousand
 4 dollars, with two or more good
 5 and sufficient sureties payable
 6 to the Co. Judge and his successors
 7 in office for the performance
 8 of such work. Said bond to approved
 9 by the Commissioners Court of
 10 said Coke Co.

11 Said Patterson to begin work at
 12 following times and places. To be
 13 gin at the N.W. Cor. of Runnels
 14 Co. on the first Monday in March
 15 1891. ~~running~~ West on the line
 16 of Coke and Nolan Counties al-
 17 lowing one weeks time to establish
 18 said North line of Coke Co. to a
 19 point about 30 miles West where
 20 Mitchell and Nolan Counties cor-
 21 ner on Coke Co. line. There com-
 22 mencing at the said corner of
 23 Mitchell and Nolan Counties on
 24 second Monday in March in 1891
 25 allowing three days to complete
 26 said line to the N.W. Cor. of
 27 Coke Co. There commencing at
 28 said N.W. Corner of Coke Co. on the
 29 morning of March 13th 1891.
 30 Running South to the S.W. Corner
 31 of Coke Co. It is further ordered
 32

R' Counter 51594

THE STATE OF TEXAS,

County of Coke

Court of

R. R. Smith, Clerk

County, Texas, do hereby certify that

the foregoing is a true and correct copy of the original field notes and plat
of the Smith and that boundary lines
of Coke County near or near the boundary of
now on file in said Court. Commissioners Court is in office of
Lee Coke Co.

GIVEN UNDER MY HAND and the seal of said Court, at office in Lee Coke Co.

this 17th day of June 1891

By R. R. Smith Clerk,
R. L. Grinnell Deputy.

North ^{4th} West Bdy
Line of Coke Co.

Filed June 23rd 1891
R. R. Smith
Chief Clerk

North bdy approved on
3 bdy of Nolan Co
1/22/92 Beaumont

Abstracted Cometed 4/8/92
Beaumont

(5)

Coke Co. Bdry line

R¹¹
County 51 604



1 I, J. R. Patterson County
 2 surveyor of Coke County Texas
 3 do hereby certify that the above
 4 and foregoing survey of the
 5 north and West boundary line
 6 of Coke County, was made
 7 according to law and order
 8 of the Court, on the speci-
 9 fied dates, with duly qualified
 10 chain carriers, and at the
 11 marks and bearings, both nat-
 12 ural and artificial are truly
 13 and correctly set forth and
 14 described in the foregoing
 15 plat and field notes. In tes-
 16 timony whereof witness my hand
 17 and signature this 23rd day
 18 of April A.D. 1891

19 J. R. Patterson
 20 County Surveyor Coke Co Tex

21 S. G. Dannelley C. C.
 22 A. N. McClunhan

23
 24
 25
 26
 27
 28
 29
 30
 31
 32
 Filed the 23rd
 day of Apr. 1891
 at 1 o'clock p.m.

R. P. Smith
 Co. Clerk

By C. B. Meague
 Deputy

Approved
 Special April
 Term 1891



1
2 At 19 miles a stone monument
3 marked as first. At 20 miles a
4 stone monument marked as
5 above at 20 M. and 612 vrs. N.
6 B. line of Sec. 2 S. P. R. R. Co. Blk 11
7 N. E. Cor. off E. 100 vrs. At 21 miles
8 a stone monument in canyon
9 marked as above At 22 miles
10 a stone monument marked as
11 above At 23 miles a stone
12 monument in Concho valley
13 marked as above at 23 M. and
14 692 vrs. N. B. line of Sec. 23, S. P.
15 R. R. Co. Blk 11 N. E. Cor. off E. 55 vrs.
16 At 24 miles a stone monument
17 marked as above. At 25 miles
18 a stone monument marked as above
19 at 25 M. and 820 vrs. a stake on
20 N. bank of Concho river a
21 China 6 in dia, hrs. S. 47 ³/₄ N. 4 vrs,
22 a willow 8 in dia, hrs. S. 39 ³/₄
23 E. 5 vrs. At 26 miles a stone mon-
24 ument marked as above At 27
25 miles a stone monument 78
26 inches high marked on North
27 side S. W. Corner Coke Co. on
28 South side N. line T. G. Co., on
29 top March 17th 1891. a mountain
30 hrs. S. 87 ³/₄ E, another mountain
31 hrs. S. 30 ¹/₄ E, North 45 West
32



1
2 8 miles a stone monument
3 marked as above, at 8 M. and
4 1540 vrs. a creek. At 9 miles a stone
5 monument on West side of
6 Creek marked as above. At
7 10 miles a stone monument
8 marked as above. At 11 miles
9 a stone monument marked
10 as above from which Smith's
11 ranche hrs. N. 28 E. about 600 vrs.
12 At 12 miles a stone monument
13 marked as above, at 12 M. and
14 550 vrs. N. B. line Sec. 222 N. &
15 I. C. R. R. Co Blk 2. N. W. Cor. off St.
16 1238 vrs. At 13 miles a stone
17 monument marked as above
18 at 13 M. and 265 vrs. Mrs. tree mark-
19 ed 3 hicks on each side, 13 M.
20 and 430 vrs. Copeland's house
21 off E. 30 vrs. At 14 miles a stone
22 monument in valley marked
23 as above. At 15 miles a stone
24 monument marked as above
25 at 15 M. and 760 vrs. 3 Live oak trees
26 marked 3 hicks on each side, 15-
27 M. and 768 vrs. fence 15-M. and
28 780 vrs. branch. At 16 miles a stone
29 monument marked as above
30 At 17 miles a stone monument
31 marked as first. At 18 miles a
32 stone monument marked as above



The West line as follows
to wit:

Beginning at stone monument
marked on East side N. W. Corner
of Cook county March 11th 1891
on West side N. E. Cor. T. G. Co.
A cedar mountain hrs. S. 59 E.
about 3 1/2 miles, another monu-
ment hrs. S. 24 1/2 E.

Thence due South at 1 mile
a stone monument marked on
East side T. L. C. Co. 1 M. on West
side E. L. T. G. Co. 1 M. 1 Mile and
1500 hrs. a creek. At 2 miles a
stone monument marked as
above, at 2 miles and 500 hrs.
a creek. 2 miles and 700 hrs.

another creek. At 3 miles a stone
monument marked as above
at 3 miles and 400 hrs. North bank
of creek, at 3 miles and 1000 hrs.
South bank of creek, at 3 miles
and 593 hrs. S. Line Sec. 34

S. P. R. R. Co. Blk. 15. At 4 miles a stone
monument marked as above

At 5 miles a stone monument
marked as above. At 6 miles
a stone monument marked
as above, at 6 miles and 118
hrs. S. line Sec. 27 N. T. C. R. R. Co.
blk 2. At 7 miles a stone monu-
ment marked as above. At



7

1
2 monument marked as above, at 29
3 miles and 200 vrs. a creek. At
4 30 miles a stone monument in
5 Sandy Valley marked as above
6 At 31 miles a stone monument
7 marked as others. At 32 miles
8 a stone monument in the
9 Colorado Valley, marked as above
10 at 32 miles and 400 vrs. E. bank
11 of Colorado river Course of
12 river, S. 10 N. At 33 miles a Stone
13 monument marked as above
14 at 33 miles and 400 vrs. the E.
15 Cor. of Sec. No. 20 off S. 60 vrs.
16 At 34 miles a stone monument
17 about two feet high marked
18 on E. side N. N. Corner of Coke
19 County March 11th 1891 on N.
20 side N. E. Corner T. G. Co, a cedar
21 mountain hrs, S. 59 E, about
22 3 miles; another mountain
23 hrs, S. 24 1/2 E; a Mrs. C. in dia, hrs,
24 S. 37 1/4 E 64 vrs.

S. G. Dannelley
Mack Lock C. C.



6

1 as above. At 20 miles a stone
2 monument marked as above
3 At 20 miles and 5-20 vs. the E.
4 boundary line of Sec. No. 258
5 At 21 miles a stone monument
6 marked as above. At 22 miles a
7 stone monument marked as others
8 At 22 miles and 5-21 vs. the E.
9 boundary line of Sec. No. 306,
10 At 23 miles a stone monument,
11 on E. side of high mountain near
12 top, marked as others. At 24
13 miles a stone monument mark-
14 ed as above at 24 miles and
15 5-21 vs. the E. boundary line
16 of Sec. No. 255 At 25 miles a flat
17 rock on West side of high
18 mountain marked on West
19 side N. L. C. Co. 25, M. At 26 miles
20 a stone monument marked
21 as above at 26 miles and
22 1845 vs Little Silver Creek
23 At 27 miles a stone monument
24 marked as above. At 28 miles
25 a stone monument marked as
26 above at 28 miles and 465 vs.
27 the E. boundary line of Sec.
28 No. 3 S. P. R. R. Co. S. 35 W. 18 vs found
29 said section's N. E. Corner at
30 28 miles and 1100 vs. a sandy
31 Creek. At 29 miles a stone Mon-



5

1
2 monument in bed of same Creek
3 marked as above at 10 miles and
4 5.30 vrs. the West line of Sec. No. 209,
5 N. W. Cor. off. North 63 vrs. At 11 miles
6 a stone monument marked as
7 others. At 12 miles a stone monu-
8 ment marked as above at 12 miles
9 1.80 vrs. Boozier Creek. at 12 miles
10 and 5.25 vrs. E. boundary line
11 of Sec. No. 266 N. & T. C. R. R. Co. Blk.
12 1a At 13 miles a stone monument
13 marked as above. At 14 miles a
14 stone monument marked as above
15 At 14 miles and 5.25 vrs. the E. bounda-
16 ry line of Sec. No. 264 N. & T. C. -
17 R. R. Co. N. E. Cor. off. North 63 vrs.
18 At 15 miles a stone monument
19 marked as above. At 16 miles
20 a stone monument on North bank
21 of Rough Creek, marked as others.
22 At 16 miles and 5.30 vrs. the E.
23 boundary line of Sec. No. 262,
24 At 17 miles a stone monument
25 marked as above. At 17 miles
26 and 5.00 vrs. Yellow Creek. At 18
27 miles a stone monument mark-
28 ed as above. At 18 miles and 5.20
29 vrs. E. boundary line of Sec.
30 No. 260 N. & T. C. R. R. Co. Blk. 1a. At
31 19 miles a stone monument on
32 North side ravine marked

R4

Counter 51597



4

1
2 Car. of Survey of land in the
3 name of Adam Cable No 471 - Cor-
4 ner found and identified, at 3 M.
5 and 1140 vrs. a creek. At 4 miles
6 a Stone monument marked on
7 South side N. L. C. Co. 4 M. on North
8 side S. L. N. Co. at 4 miles and 520
9 vrs. the S. E. corner of Sec. No. 251
10 N. + T. C. R. R. Co. Blk. 1^a Cor. off
11 North 64 vrs. At 5 miles a stone
12 monument marked as above, at
13 5 miles and 523 vrs. the E. B. L. of
14 Sec. No. 252 N. E. Cor. off North
15 64 vrs.; at 5 miles and 1875 - vrs.
16 the E. bank Oak Creek. At 6 miles
17 a stone monument marked as
18 above on West bank of Oak
19 Creek; at 6 miles and 1780 vrs. An-
20 telopi Creek. At 7 miles a stone
21 monument marked as above. At
22 8 miles a stone monument marked
23 as above. at 8 miles and 520 vrs.
24 the E. line of Sec. No. 270 N + T -
25 C. R. R. Co. Blk 1^c at 8 miles and
26 1800 vrs. crosses creek at 8 miles
27 and 1880 vrs. recrosses same creek.
28 At 9 miles a stone monument
29 marked as above, at 9 miles and
30 110 vrs. crosses same creek again;
31 at 9 miles and 655 vrs. recrosses
32 same creek. At 10 miles a stone



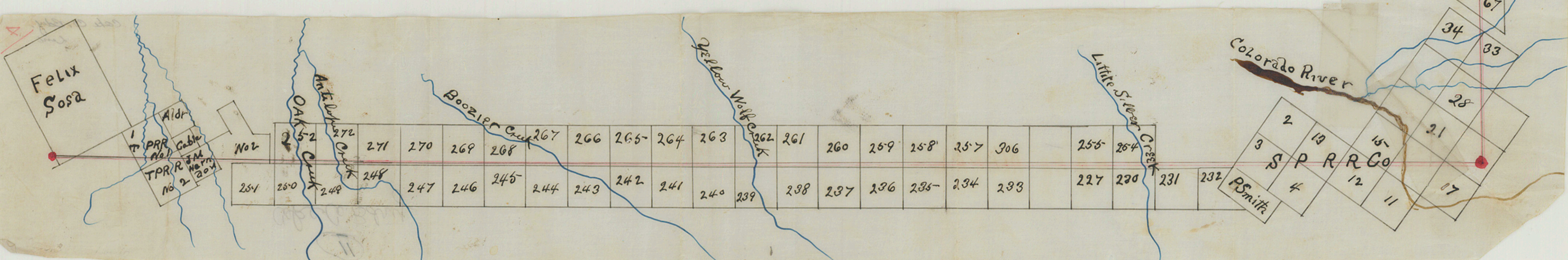
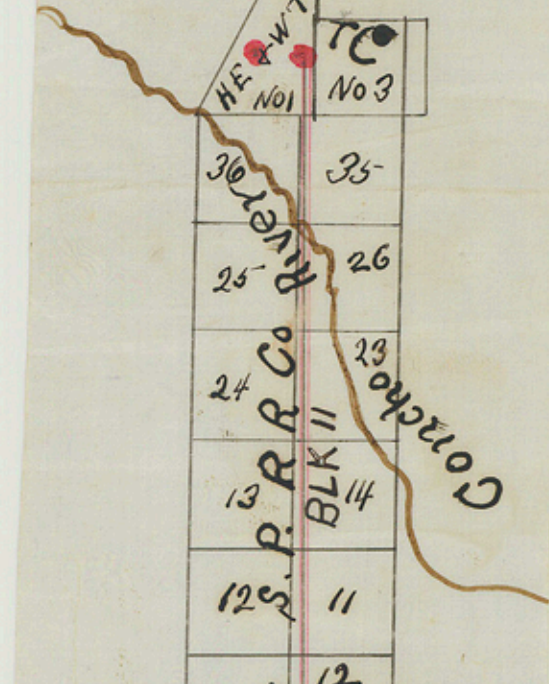
1 by the Court that the County
2 Clerk send certified copy of this
3 order to the Commissioners
4 Court of Nolan, Mitchell and
5 Tam Green Counties at once,
6 I was at the place of commencing
7 ordered by the Court at the ap-
8 pointed time, and was met by
9 R. A. Ragland County surveyor of
10 Nolan Co and in compliance with
11 said order established the North
12 line of Coke Co. to wit,
13 Beginning at the N. W. Corner of
14 Pannels Co. a stone monument
15 found about two feet out of the
16 ground, marked on West side
17 P. S. Co. 34. On East side R. C. Co. 34.
18 W. Thence due West at one mile
19 a stone monument marked on
20 South side, N. L. C. Co. 1 M.; North
21 side S. L. N. Co. At two miles, ^{stone} a mon-
22 ument marked on South side
23 N. L. C. Co. 2 M.; on North side S. L. N.
24 Co. the same being East boundary
25 line of Sec. no. 1 4 + P. R. Co. At 2
26 miles and 300 vs. a creek. At 3 miles
27 a stone monument marked on
28 South side N. L. C. Co. 3 M.; on North
29 side S. L. N. Co. At 3 miles and
30 140 vs. a stone mound ~~off~~ South
31 114 vs. the same being N. E.

36	35
25	26
24	23
13	14
12	11
1	12
47	48
38	37
27	28
6	5
298	297
271	270
248	249
223	222
194	195
165	166
144	143
119	118
76	75
67	66
26	27
3	4
67	68

T8 PRR Co

Block No 2

No 1 No 3



267	266	265	264	263	262	261	260	259	258	257	306	255	254	231	232				
271	270	269	268	267	266	265	264	263	262	261	260	259	258	257	306	255	254	231	232
248	247	246	245	244	243	242	241	240	239	238	237	236	235	234	233	227	230	231	232

