

P.W. D-292

COURT ORDER NO. 87-472-05-26

RECEIVED
JUN 6 1987
GENERAL LAND OFFICE

THE STATE OF TEXAS)
)
COUNTY OF COLLIN) LAND - COUNTY LINE
) REVISED FIELD NOTES
) PUBLIC WORKS DEPARTMENT

On May 26, 1987, the Commissioners Court of Collin County, Texas, met in Special Session with the following members present and participating, to wit:

William J. Roberts County Judge, Presiding
Howard Thornton Commissioner, Pct. No. 1
Jerry Hoagland Commissioner, Pct. No. 2
Wallace Webb Commissioner, Pct. No. 3
Jack Hatchell Commissioner, Pct. No. 4

and at such session, among other business coming to the attention of the Court, was consideration of a request from the Director of Public Works for approval of the revised field note description of the north Dallas and south Collin Counties, as was prepared by Jackson & Associates Surveying Consultants, Inc.

A motion was made, seconded and carried with a majority vote of the Court that the revision highlighted on the attached field note description (Exhibit A) be hereby accepted and approved for filing in the General Land Office in Austin, and further, that the field notes approved under Court Order No. 87-048-01-12 be hereby replaced.

Approved, ordered and dated this the 26th day of May, 1987.

W. J. Roberts
William J. Roberts, County Judge
Collin County, TEXAS

ATTEST:
Helen Starnes m
Helen Starnes, Ex-Officio Clerk
Commissioners' Court
Collin County, TEXAS



EXHIBIT A

Letter from General Land Office

and

Field Note Description of
The North Dallas County Line

Garry Mauro
Commissioner
General Land Office



May 1, 1987

Jackson & Associates Surveying
Consultants, Incorporated
1219 Abrams Road, Suite 130
Richardson, TX 75081

Attention: Mr. Donald J. Jackson, R.P.S.
President

Re: North Dallas County Line

Dear Mr. Jackson:

Acceptance for filing of your revised field note description of the North Dallas, et al County Line has been approved.

We will need an Order Accepting and Adopting the revised field notes from each of the respective Commissioner's Courts.

If you have any questions or if I can be of any assistance please do not hesitate to call.

Sincerely,

A handwritten signature in cursive script that reads "Rosendo V. Molina".

Rosendo V. Molina
Assistant Director

EXHIBIT A

Stephen F. Austin Building
1700 North Congress Avenue
Austin, Texas 78701
(512) 463-5256

Counter 51693

FIELD NOTE DESCRIPTION OF THE NORTH DALLAS COUNTY LINE

BEGINNING at a brass disc in concrete set for the Northeast corner of Dallas County, said monument being located in a cultivated field 5 chains South of the South boundary line of the J.D. Shelby Survey in the Nathaniel Atterberry Survey, and on the South line of Collin County;

THENCE North $89^{\circ} 29' 55''$ West at 500.5 varas the Northeast line of the E.M. Price Survey 881.2 varas South 45° East of its North corner;

THENCE continue North $89^{\circ} 29' 55''$ West at 520.1 varas this point being 118.8 varas South of a lead alloy pipe for the inside ell corner of the N. Atterberry Survey and the Southwest corner of the J.D. Shelby Survey;

THENCE continue North $89^{\circ} 29' 55''$ West at 1579.5 varas east branch Cottonwood Creek; at 1589.9 varas west branch Cottonwood Creek; at 1744.4 varas the Northwest line of the E.M. Price Survey and the Southeast line of the W. Sutton Survey and the Southeast line of the Aaron West Survey; said point being North 45° East a distance of 48.3 varas from the most Westerly corner of the E.M. Price Survey and North 45° East 48.3 varas from the South corner of said Sutton Survey and North 45° East 210.3 varas from the South corner of said West Survey;

THENCE continue North $89^{\circ} 29' 55''$ West at 1812.8 varas the Southwest line of said Sutton Survey, said County Line being North 45° West 48.4 varas from the South corner of said Sutton Survey;

THENCE continue North $89^{\circ} 29' 55''$ West at 1900.8 varas 1st Mile Marker set in a pasture; at 2042.3 varas Pleasant Valley Road and the common line of Aaron West and G. de los Santos Surveys said point being 211 varas North 45° West from the East corner of said de los Santos Survey and the North 45° West 211 varas from the South corner of said West Survey;

THENCE continue North $89^{\circ} 29' 55''$ West at 3502.1 varas the East line of the R.D. Newman Survey 1862.1 varas South $2^{\circ} 48'$ West from its Northeast corner; at 3618.3 varas the centerline of Sachse Road and the Northwest line of the G. de los Santos Survey said County Line being South 45° West 1111.1 varas from its North corner;

THENCE continue North $89^{\circ} 29' 55''$ West at 3801.6 varas the 2nd Mile Marker set in a pasture; at 4285.8 varas the East branch of Muddy Creek; at 4749.5 varas Muddy Creek; at 5702.4 varas the 3rd Mile Marker set in a cultivated field; at 6389.0 varas the West line of said Newman Survey and the East line of the M.L. Swing Survey said County Line being 1875.8 varas South $2^{\circ} 48'$ West from the said Newman's Northwest corner and South 20.8 varas of said Swing's Northeast corner;

THENCE continue North $89^{\circ} 29' 55''$ West at 6812.1 varas the West line of M.L. Swing and the East line of James Cumba Survey, said County Line being South 15.9 varas of said Swing's Northwest corner and 220.1 varas North of said Cumbas Southeast corner;

THENCE continue North 89° 29' 55" West at 7314.81 varas a brass cap in concrete on the East right-of-way line of SH 78; at 7384.83 varas brass cap in concrete on the West right-of-way line of SH 78; at 7414.6 varas the centerline of the Atchison, Topeka and Santa Fe Railroad, at 7603.2 varas the 4th Mile Marker in a cultivated field; at 7787.3 varas the West line James Cumba Survey 248.3 varas North of its Southwest corner and also being in the East line of the E. Sachse Survey also 248.3 varas North of its Southeast corner;

THENCE continue North 89° 29' 55" West at 8737.3 varas the West line of E. Sachse Survey, said County Line being 255.0 varas north of its southwest corner and also the East line of the D. Herring Survey 255.0 varas North of its Southeast corner;

THENCE continue North 89° 29' 55" West at 9504.0 varas the 5th Mile Marker set in a site of future development; at 10,638.0 varas the West line of the D. Herring Survey 268.0 varas North of its Southwest corner and also the East line of the H.L. Douglas Survey 268.0 varas North of its Southeast corner;

THENCE continue North 89° 29' 55" West at 11,404.8 varas the 6th Mile Marker set in timber; at 11,422.8 varas a branch, at 11,774.2 varas the West line of H.L. Douglas and the East line E.H. Dodd Survey said County Line being 277.9 varas North of said Douglas' Southwest corner and 576.0 varas North of said Dodd's Southeast corner;

THENCE continue North 89° 29' 55" West at 12,398.1 varas Rowlett Creek; at 13,305.6 varas the 7th Mile Marker set in a cultivated field; at 13,658.4 varas the West line of E.H. Dodd and the East line of the John McCollough Survey, said County Line being 592.5 varas North of Dodd's Southwest corner and 290.0 varas North of said J. McCollough's Southeast corner;

THENCE continue North 89° 29' 55" West at 14,443.0 varas the West line of John McCollough Survey and the East line of Henry McCollough Survey, said County Line being 300.2 varas North of the Southwest corner of said J. McCollough Survey and 300.2 varas North of the Southeast corner of said H. McCollough Survey;

THENCE continue North 89° 29' 55" West at 15,206.4 varas the 8th Mile Marker set in a pasture, at 16,362.5 varas the West line of H. McCollough Survey and the east line of the C.K. Vance Survey and also the centerline of Shiloh Road, said County Line being 334.6 varas North of the Southwest corner of H. McCollough Survey and 334.6 varas North of the Southeast corner of the C.K. Vance Survey;

THENCE continue North 89° 29' 55" West at 17,107.2 varas the north back of curb on Lookout Drive and the 9th Mile Marker set; at 18,259.0 varas centerline of Jupiter Road also being the West line of the C.K. Vance Survey and the East line of the T. Vance Survey, said County Line being 347.0 varas North of the Southwest corner of the C.K. Vance Survey and North 347.0 varas from the Southeast corner of the T. Vance Survey;

THENCE continue North 89° 29' 55" West at 19,008.00 varas the 10th Mile Marker set in timber in the Spring Creek bottom; at 19,099.8 varas Spring Creek; at 20,146.26 varas a P.K. nail in asphalt paving for the East right-of-way line of Highway 5 (Greenville Avenue); at 20,167.9 varas the West line of the T. Vance Survey and the East line of the J.C. Vance Survey, said County Line being 366.7 varas North of T. Vance's Southwest corner and North 366.7 varas from the Southeast corner of J.C. Vance;

THENCE continue North 89° 29' 55" West at 20,189.46 varas a brass cap in concrete for the West right-of-way line for Highway 5 (Greenville Avenue), at 20,908.8 varas the 11th Mile Marker set in a cultivated field; at 21,381.4 varas the centerline of the Southern Pacific Railroad; at 21,401.06 varas a brass cap in concrete set on the East right-of-way line of U.S. Highway No. 75 (Central Expressway), at 21,515.71 varas a brass cap in concrete set on the West right-of-way line of U.S. Highway No. 75 (Central Expressway); at 22,068.7 varas the West line of the J.C. Vance Survey and the East line of the R. Coupland Survey said County Line being North 383.4 varas of the Southwest corner of said J. Vance Survey and North 383.4 varas from the Southeast corner of said Coupland Survey;

THENCE continue North 89° 29' 55" West at 22,225.5 varas Campbells Branch (now called Prairie Creek); at 22,809.6 varas the 12th Mile Marker set on the West property line, more or less, of 400 Ridgeview Street, said marker falling 1.9 varas North of a sidewalk that parallels said Ridgeview; at 23,019.1 varas the West line of the R. Coupland Survey and East line of the E.T. Myers Survey said County Line being 391.7 varas North of the Southwest corner of said Coupland Survey and the Southeast corner of said Myers Survey;

THENCE continue North 89° 29' 55" West at 23,523.7 varas again cross Campbells Branch; at 23,969.5 varas the West line of E.T. Myers Survey and the East line of the McKinney and Williams Survey said County Line being North 413.4 varas of the Southwest corner of said Myers Survey and 70.4 varas South of the most easterly Northeast corner of said McKinney and Williams Survey;

THENCE continue North 89° 29' 55" West at 24,399.7 varas the centerline of the Atchison, Topeka and Santa Fe Railroad; at 24,722.64 varas the 13th Mile Marker set in the West property line of 112 Mill Springs Road; at 25,872.7 varas the West line of the McKinney and Williams Survey and the East line of the J. Clay Survey and County Line being 53.7 varas South of the Northwest corner of said McKinney and Williams Survey and 430.1 varas North of the Southeast corner of said Clay Survey;

THENCE continue North 89° 29' 55" West at 26,627.40 varas the 14th Mile Marker set 1.4 varas West of a concrete parking lot; at 27,801.6 varas the West line of J. Clay Survey and the East line of T. Vager Survey, said County Line being 447.0 varas North of the Southwest corner of said Clay Survey and South 194.0 varas South of the Northeast corner of said Vager Survey;

THENCE continue North 89° 29' 55" West at 28,455.12 varas the 15th Mile Marker set in turf area of an apartment complex; at 28,918.6 varas the West line of T. Vager Survey and the East line of the John W. Overton Survey, said County Line being South 184.3 varas of said Vagers Northwest corner and South 184.3 varas of the Northeast corner of said Overton Survey;

THENCE continue North 89° 29' 55" West; at 29,525.3 varas the centerline of the St. Louis and Southwestern Railroad; at 29,656.7 varas Spanky's Branch, at 30,391.44 varas the 16th Mile Marker in a median in the center of McCallum Blvd., at 30,874.0 varas the McCamy Branch; at 31,258.6 varas the West line of the John W. Overton Survey and the East line of the A. Danks Survey, said County Line being South 163.8 varas of the Northwest corner of the said Overton Survey and 1458.2 varas South of the Northeast corner of said Danks Survey;

THENCE continue North 89° 29' 55" West, at 31,588.6 varas a brass cap in concrete set on the East right-of-way line of S.H. No. 289 (Preston Road); at 31,635.00 varas an "X" cut in concrete paving on the west right-of-way line of S.H. No. 289 (Preston Road); at 31,869.6 varas the West line of the A. Danks Survey and the East line of the J. Mounts Survey, said County Line being 1453.6 varas South of said Dank's Northwest corner and South 1453.6 varas from said Mounts Survey Northeast corner;

THENCE continue North 89° 29' 55" West; at 32,313.60 varas the 17th Mile Marker set in a grass field; at 32,710.5 varas White Rock Creek; at 33,034.6 varas the West line of the J. Mounts Survey and the East line of the B.C. Myers Survey, said County Line being 1443.4 varas South of J. Mounts' Northwest corner and 208.4 varas South of Myers Northeast Corner; at 33,644.6 varas the West line of the B.C. Myers Survey and the East line of the Eli Shepherd Survey, said County Line being 203.1 varas South of said Myers Northwest corner and South 203.1 varas from the Northeast corner of said Shepherd Survey;

THENCE continue North 89° 29' 55" West; at 34,214.40 varas the 18th Mile Marker set in a grass area north of a subdivision on the rear of a commercial tract; at 34,891.6 varas the West line of the E. Shepherd Survey and the east line of the Drake Survey, said County Line being 192.2 varas South of said Shepherd's Northwest corner, and 24.2 varas North of said Drakes most southerly Southeast corner;

THENCE continue North 89° 29' 55" West; at 35,064.8 varas the West line of the Drake Survey and the East line of the E. Allen Survey, said County Line being 25.5 varas North of the most southerly Southwest corner of said Drake survey and 25.5 varas North of the most southerly Southeast corner of said Allen Survey;

THENCE continue North 89° 29' 55" West; at 35,534.6 varas the West line of the E. Allen Survey and the East line of the William Kingwell Survey, said County Line being 29.6 varas North of the most southerly Southwest corner of said Allen Survey and 436.6 varas South of the Northeast corner of said Kingwell Survey;

THENCE continue North 89° 29' 55" West; at 36 117.06 varas to a brass cap set in concrete parking lot for the Southwest corner of Collin County and the Southeast corner of Denton County, said marker being 5.40 varas South and 17.8 varas East of the most westerly corner of a red roofed, stucco building, said building being called the Trinity Oaks Building in a strip shopping center;

THENCE continue North 89° 29' 55" West; at 36,219.6 varas the 19th Mile Marker set 1.1 varas North of a 6 foot concrete privacy wall in a grass field; at 36,485.0 varas the West line of William Kingwell and the East line of the Eli Shepherd Survey, said County Line being 428.3 varas South of said Kingwell's Northwest corner and 243.3 varas South of said Shepherd's Northeast corner;

THENCE continue North 89° 29' 55" West; at 37,085.0 varas the West line of the E. Shepherd Survey, said County Line being 238.1 varas South of said Shepherd's Northwest corner; at 37,321.1 varas the East line of the Mathias Ward Survey, said County Line being South 272.3 varas of Ward's Northeast corner;

THENCE continue North 89° 29' 55" West; at 37,421.1 varas the West line of the M. Ward Survey and the East line of the William Row Survey, said County Line being South 271.4 varas from said Ward's Northwest corner and South 271.4 varas of W. Row's Northeast corner;

THENCE continue North 89° 29' 55" West; at 38,018.5 varas the 20th Mile Marker set two feet east of a sidewalk paralleling Briar Hill Drive; at 38,371.5 varas the West line of William Row Survey and the East line of the Levi Nobles Survey, said County Line being 263.1 varas South of said Row's Northwest corner and South 263.1 varas from said Nobles' Northeast corner;

THENCE continue North 89° 29' 55" West; at 39,560.50 varas the centerline of the St. Louis and San Francisco Railroad; at 39,616.5 varas the West line of Levi Nobles Survey and the East line of the John Jackson Survey, said County Line being South 252.2 varas from said Nobles' Northwest corner and South 602.2 varas from the Northeast corner of said Jackson Survey;

THENCE continue North 89° 29' 55" West; at 40,011.12 the 21st Mile Marker set 21.6 varas north of a four foot sidewalk and 2.3 varas east of another four foot sidewalk at the northeast corner of the intersection of Colonial Place and Versailles Drive; at 41,476.2 varas the West line of the John Jackson Survey and the East line of a 160 acre Survey in the name of John Jackson, said County Line being South 1134.8 varas from John Jackson's Northwest corner and South 226.8 varas from the Northeast corner of said 160 acre Survey in the name of John Jackson;

THENCE continue North 89° 29' 55" West at 41,700.6 varas the 22nd Mile Marker set on the West right-of-way line, more or less, of Gold Rush Lane, north of Sutters Mill Drive; at 42,426.2 varas the West line of the J. Jackson 160 acre Survey, and the East line of the Benjamin Baccus Survey, said County Line being South 218.5 varas from the Northwest corner of said 160 acres and 218.5 varas South of an interior ell corner of said Baccus Survey;

THENCE continue North 89° 29' 55" West; at 43,376.3 varas the most Westerly West line of B. Baccus Survey and the East line of Josiah Ashlock Survey, said County Line being South 20.2 varas from the most Westerly Northwest corner of said Baccus Survey and South 1193.5 varas from the Northeast corner of said J. Ashlock Survey;

THENCE continue North 89° 29' 55" West; at 43,610.4 varas the 23rd Mile Marker set in a low lying pasture; at 43,764.5 varas Furneaux Creek, at 45,277.1 varas the West line of the Josiah Ashlock Survey and the East line of the Lionel Simpson Survey, said County Line being South 1159.2 varas of said Ashlock's Northwest corner and 1159.2 varas South of said Simpson's Northeast corner;

THENCE continue North 89° 29' 55" West; at 45,619.20 varas the 24th Mile Marker set in an industrial construction site; at 45,752.3 varas the West line of the L. Simpson Survey and the East line of the William B. Row Survey, said County Line being North 739.2 varas from said Simpson's Southwest corner and North 739.2 varas from said Row's Southeast corner;

THENCE continue North 89° 29' 55" West at 46,034.87 varas the centerline of the Missouri and Texas Railroad; at 46,520.59 varas the East right-of-way line of Interstate 35; at 46,738.73 varas the West right-of-way line of Interstate 35 and heavy timber; at 46,724.0 varas the Elm Fork of the Trinity River; at 47,177.9 varas the West line of W.B. Row Survey and the East line of the Martin O'Neil Survey, said County Line being North 751.7 varas from the Southwest corner of said Row's Survey and 198.7 varas South of the Northeast corner of M. O'Neil Survey;

THENCE continue North 89° 29' 55" West at 47,520.00 varas the 25th Mile Marker set in the brushy bottoms of Timbercreek; at 47,736.0 varas Timbercreek at its closest point to the County Line bears North 35.6 varas; at 48,084.7 varas a fence on the West line of the M. O'Neil Survey and on the East line of the J. Mounts Survey, said County Line being 190.8 varas South of M. O'Neil's Northwest corner and South 629.7 varas from the Northeast corner of the J. Mounts Survey;

THENCE continue North 89° 29' 55" West at 48,884.8 varas a fence on the West line of J. Mounts Survey and the East line of the William A. Trimble Survey, said County Line being South 226.4 varas from the inside ell corner of the J. Mounts Survey and South 226.4 varas from the Northwest corner of the William A. Trimble Survey;

THENCE continue North 89° 29' 55" West at 49,060.8 the 26th Mile Marker set on a very large construction site in the name of Vista Ridge; at 49,193.8 varas toe of a 10 foot berm; at 49,214.5 varas top of berm; at 49,224.1 varas exit top of berm; at 49,348.8 varas the top bank of a 300 foot wide channel, more or less, under construction; at 49,549.2 varas enter the bed of the channel; at 50,620.0 vara exit bed of channel; at 50,647.1 varas top bank of channel; at 50,688.8 varas the West line of the William A. Trimble Survey and the East line of the Gilbert C. Woolsey Survey, said County Line being South 210.6 varas of W.A. Trimble's Northwest corner and South 1258.7 varas of Gilbert C. Woolsey's Northeast corner;

THENCE continue North 89° 29' 55" West; at 51,321.60 varas the 27th Mile Marker set in aforementioned construction site; at 52,589.6 varas the West line of Gilbert C. Woolsey Survey, said County Line being South 1242.1 varas of said Woolsey Survey's Northwest corner;

THENCE continue North 89° 29' 55" West at 52,715.8 varas the East line of the Heirs Clarinda Squires, said County line being North 536.8 varas from said Squires Northeast corner;

THENCE continue North 89° 29' 55" West at 53,222.40 varas the 28th Mile Marker set in a pasture;

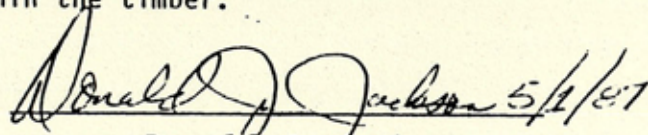
THENCE continue North 89° 29' 55" West at 53,585.8 varas the West line of Clarinda Squires Survey and the East line of the Peter Harmonson 240 acre Survey, said County Line being South 529.2 varas from the Northwest corner of Clarinda Squires Survey and North 219.6 varas of the Southeast corner of the Peter Harmonson 240 acre Survey;

THENCE continue North 89° 29' 55" West through an old strip mine area; at 54,414.64 varas a brass cap in concrete on the East right-of-way line of S.H. 121; at 54,463.37 varas a brass cap in concrete on the West right-of-way line of S.H. 121; at 54,536.2 varas the West line of the Peter Harmonson 240 acre Survey and the East line of a 400.0 acre Survey also in the name of Peter Harmonson, said County Line being North 227.9 varas from the Southwest corner of said 240.0 acre Survey in the name of P. Harmonson and North 227.9 varas from the Southeast corner of said 400.0 acre Survey in the name of P. Harmonson;

THENCE continue North 89° 29' 55" West at 55,123.20 varas the 29th Mile Marker set in the bottoms of Denton Creek in a future trailer park site under construction; at 55,631.2 varas Denton Creek, at 55,724.2 varas the West line of the 400.0 acre tract in the name of Peter Harmonson and the East line of the Heirs of Henry Turner Survey, said County Line being North 238.3 varas from the Southwest corner of said Harmonson Survey and North 238.3 varas from the Southeast corner of the Heirs of Henry Turner Survey;

THENCE continue through the bottoms of Denton Creek, at 56,080.1 varas Denton Creek; at 56,466.1 varas the West line of the Heirs of Henry Turner Survey and the East line of the J.C. Moffatt Survey, said County Line being North 244.8 varas of said Turner Survey's Southwest corner and North 661.4 varas from the Southeast corner of the J.C. Moffatt Survey;

THENCE continue North 89° 29' 55" West at 56,756.53 varas set the Northwest corner of Dallas County in the northerly end and the easterly edge of a fingerlike projection of timber in a pasture; said corner also being in the head of a draw draining to the South within the timber.

 5/2/87

Donald J. Jackson
Special County Surveyor
In and For Dallas County
Registered Public Surveyor

STATE PLANE COORDINATES FOR MARKERS ON THE NORTH DALLAS COUNTY LINE

	X	Y
N.E. Cor. Dallas Co.	2,301,493.21	480,199.86
1st Mile Marker	2,296,214.23	480,246.06
2nd Mile Marker	2,290,935.25	480,292.26
3rd Mile Marker	2,285,656.27	480,338.46
4th Mile Marker	2,280,377.29	480,384.66
5th Mile Marker	2,275,098.31	480,430.86
6th Mile Marker	2,269,819.33	480,477.06
7th Mile Marker	2,264,540.35	480,523.27
8th Mile Marker	2,259,261.37	480,569.47
9th Mile Marker	2,253,982.39	480,615.67
10th Mile Marker	2,248,703.41	480,661.87
11th Mile Marker	2,243,424.43	480,708.07
12th Mile Marker	2,238,145.45	480,754.27
13th Mile Marker	2,323,832.48	480,800.77
14th Mile Marker	2,227,542.50	480,847.07
15th Mile Marker	2,222,466.48	480,891.50
16th Mile Marker	2,217,088.85	480,938.56
17th Mile Marker	2,211,750.55	480,985.28
18th Mile Marker	2,206,471.57	481,031.48
S.W. Cor. Collin Co.		
S.E. Cor. Denton Co.	2,201,187.42	481,077.73
19th Mile Marker	2,200,902.65	481,080.22
20th Mile Marker	2,195,906.62	481,123.95
21st Mile Marker	2,190,372.69	481,172.38
22nd Mile Marker	2,185,680.59	481,213.45
23rd Mile Marker	2,180,376.62	481,259.87
24th Mile Marker	2,174,797.69	481,308.69
25th Mile Marker	2,169,518.71	481,354.89
26th Mile Marker	2,165,239.54	481,392.35
27th Mile Marker	2,158,960.75	481,447.30
28th Mile Marker	2,153,681.77	481,493.50
29th Mile Marker	2,148,402.79	481,539.70
N.W. Cor. Dallas Co.		
N.E. Cor. Tarrant Co.	2,143,866.63	481,579.40

Counter 51901

STATE PLANE COORDINATES FOR MARKERS ON THE NORTH DALLAS COUNTY LINE

	X	Y
S.H. 78		
East R.O.W.	2,281,178.23	480,377.65
West R.O.W.	2,280,983.76	480,379.35
Hyw. 5 (Greenville Ave.)		
East R.O.W.	2,245,542.21	480,689.54
West R.O.W.	2,245,422.23	480,690.59
U.S. 75 (Central Expressway)		
East R.O.W.	2,242,057.30	480,720.04
West R.O.W.	2,241,738.91	480,722.82
S.H. 289 (Preston Road)		
East R.O.W.	2,213,764.20	480,967.66
West R.O.W.	2,213,635.10	480,968.79
I-35		
East R.O.W.	2,172,294.35	481,330.60
West R.O.W.	2,171,688.50	481,335.90
S.H. 121		
East R.O.W.	2,150,370.63	481,522.48
West R.O.W.	2,150,235.30	481,523.66
N.W. Cor. Tarrant Co.	1,986,638.94	482,955.46

SURVEYED BY
 DATE
 COUNTY
 No. 10

Counter 51702

①

File No. County Borey Line No. 4
Collin County
Portion of the South Collin County
Line "North Dallas County Line"
Filed JUNE 8 19 87

GARRY MAURO, Com'r
By R. Melina

-5-

M.M.	CON.	TRAILER CO.	1	00	TRAILER	40	485' 222" 40
M62F	R'0'M		S'720'523"20				481'253"00
E92F	R'0'M		S'120'210"03				481'253"48
2*M	151						
M62F	R'0'M		S'111'000"20				481'232"00
E92F	R'0'M		S'115'534"32				481'230"00
1-32							
M62F	R'0'M		S'513'022"10				480'000"30
E92F	R'0'M		S'513'104"50				480'001"00
2*M	508	(6608 not 2079) 085					
M62F	R'0'M		S'541'138"01				480'155"85
E92F	R'0'M		S'545'023"30				480'150"04
0'2	12	(066229) (671762) (66222222)					
M62F	R'0'M		S'542'455"53				480'000"20
E92F	R'0'M		S'542'245"51				480'000"24
1/4M	2	(066229) (116 146)					
M62F	R'0'M		S'580'003"30				480'310"32
E92F	R'0'M		S'581'110"53				480'311"02
2*M	30						

STATE BY THE COORDINATES FOR NUMBER 2 ON THE NORTH DOTTED LINE

Garry Mauro
Commissioner
General Land Office



July 22, 1987

Mr. Kenneth L. Maun
Tax Assessor-Collector
Collin County Courthouse
210 South McDonald
McKinney, Texas 75069

Dear Mr. Maun:

The north Dallas County line has been approved and filed June 8, 1987. The acreage for the following surveys has been allocated to the various counties as set out in the table below. Please note that some of the surveys have new abstract numbers.

File Patented Acres	Original Grantee	Dallas Co. Abst./Ac.	Collin Co. Abst./Ac.	Denton Co. Abst./Ac.
F-3-4055 230	Nathaniel Atterberry	#1763/22	#1099/67	
N-3-435 320	Elisha M. Price	#1114/241.5	#725/70	
N-3-624 640	Wm. Sutton	#1275/4	#860/636	
N-B-411 640	Guadalupe delos Santos	#1384/528.5	#1100/111.5	

Stephen F. Austin Building
1700 North Congress Avenue
Austin, Texas 78701
(512) 463-5256

Counter 51704

Mr. Kenneth L. Maun
Page 2
July 22, 1987

File Patented Acres	Original Grantee	Dallas Co. Abst./Ac.	Collin Co. Abst./Ac.	Denton Co. Abst./Ac.
F-2-127 1476	Richard D. Newman	#1072/520.5	#660/955.5	
N-S-910 72	M. L. Swing	#1392/71	#1116/1	
F-B-1018 160	James Cumba	#1747/39.5	#243/120.5	
F-3-2011 320	Elizabeth Sachse	#1346/46.5	#802/273.5	
F-3-1087 640	Daniel Herring	#626/88	#402/552	
F-3-1086 403	Heirs of Hezekiah Douglass	#1745/55.5	#271/347.5	
F-3-189 640	Edmund H. Dodd	#393/196.5	#281/443.5	
F-3-1088 264	John McCollough	#902/40.5	#584/223.5	
F-3-1090 640	Henry McCollough	#901/106.5	#587/533.5	
F-3-1529 640	Charles K. Vance	#1509/115	#941/525	
F-3-1105 640	Thos. Vance	#1504/120	#940/520	

File Patented Acres	Original Grantee	Dallas Co. Abst./Ac.	Collin Co. Abst./Ac.	Denton Co. Abst./Ac.
F-3-562 640	John U. Vance	#1513/126	#942/514	
F-1-1024 160	Richard Coupland	#1618/65	#156/95	
F-3-1644 320	Elias T. Myers	#1762/67.5	#616/252.5	
N-S-199 112	Thos. F. McKinney & Saml. M. Williams	#1023/91	#1117/21	
F-3-1626 640	Hrs. of John Clay	#313/147.5	#223/492.5	
N-3-2631 320	Thomas J. Yager	#1615/280.5	#1114/39.5	
N-3-1956 640	John W. Overton	#1108/568	#1115/72	
N-3-1973 320	Albert B. Danks	#400/162.5	#283/157.5	
N-3-2170 640	Jesse V. Mounts	#942/341	#634/299	
N-3-2954 220	Benjamin C. Myers	#964/197.5	#1109/22.5	
N-3-2884 160	Eli Shepherd	#1361/116.5	#1113/43.5	

File Patented Acres	Original Grantee	Dallas Co. Abst./Ac.	Collin Co. Abst./Ac.	Denton Co. Abst./Ac.
F-3-3448 108	George D. Drake	#1786/1	#273/107	
F-3-2779 640	Hrs. of Edwin Allen	#1787/2.5	#8/637.5	
N-3-2134 160	Hrs. of William Kingwill	#737/87	#1107/44.5	#1718/28.5
N-3-2928 81	Eli Shepherd	#1788/55.5		#1721/25.5
N-S-142 160	Matthias Ward	#1603/155		#1727/5
N-3-2050 160	William B. Row	#1244/115		#1720/45
N-3-3469 223.5	Levi Nobles	#1096/166.5		#1724/57
N-3-2028 530	John Jackson	#697/243		#675/287
N-3-3472 160	John Jackson	#708/122.5		#676/37.5
F-3-4261 640	Benjamin Baccus	#1789/25		#119/615
N-3-2176 640	Hrs. of Josiah Ashlock	#33/244		#24/396

Mr. Kenneth L. Maun
Page 5
July 22, 1987

File Patented Acres	Original Grantee	Dallas Co. Abst./Ac.	Collin Co. Abst./Ac.	Denton Co. Abst./Ac.
N-3-2052 160	Lionel Simpson	#1340/62.5		#1211/97.5
N-3-2050 480	William B. Row	#1243/188		#1124/292
N-3-2045 160	Martin O'Neil	#1790/127		#987/33
F-3-2060 320	John H. Mounts	#903/209.5		#874/110.5
F-3-2062 320	William A. Trimble	#1791/246.5		#1268/73.5
R-3-1218 640	Hrs. of Gilbert C. Woolsey	#1792/219		#1402/421
R-S-2613 20	William T. Hyder	#1793/9.5		#1701/10.5
R-3-4907 497	Hrs. of Clarinda Squires	#1327/415		#1682/82
F-3-1567 240	Peter Harmonson	#1794/37.5		#604/202.5
F-3-1567 400	Peter Harmonson	#1795/49		#530/351
F-3-1763 320	Hrs. of Henry Turner	#1796/24.5		#1248/295.5

Mr. Kenneth L. Maun
Page 6
July 22, 1987

File Patented Acres	Original Grantee	Dallas Co. Abst./Ac.	Collin Co. Abst./Ac.	Denton Co. Abst./Ac.
F-3-4052 160	J. C. Moffatt	#1797/34		#886/104
			Rockwall Co. Abst./Ac.	
F-3-4055 230	Nathaniel Atterberry		#6/141	
N-3-435 320	Elisha M. Price		#256/8.5	
				Tarrant Co. Abst./Ac.
F-3-4052 160	J. C. Moffatt			#2048/22

Please note this information on your records.

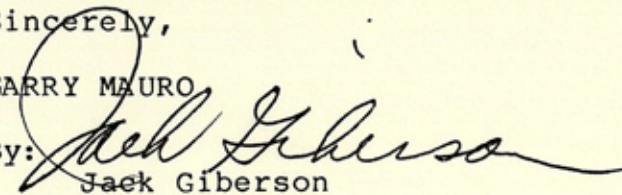
This information will be carried in Abstract Supplement "I", when published.

If you should have any further questions, please call.

Sincerely,

GARRY MAURO

By:


Jack Giberson
Chief Clerk


GM/JG/gb

File Patented Acres	Original Grantee	Dallas Co. Abst./Ac.	Collin Co. Abst./Ac.	Denton Co. Abst./Ac.
F-3-4052 160	J. C. Moffatt	\$1797/34		\$886/104
F-3-4052 330	Nachaniel Atterberry		\$6/141	
N-3-435 320	Elisha M. Price		\$556/8.5	
F-3-4052 160	J. C. Moffatt			\$2048/22

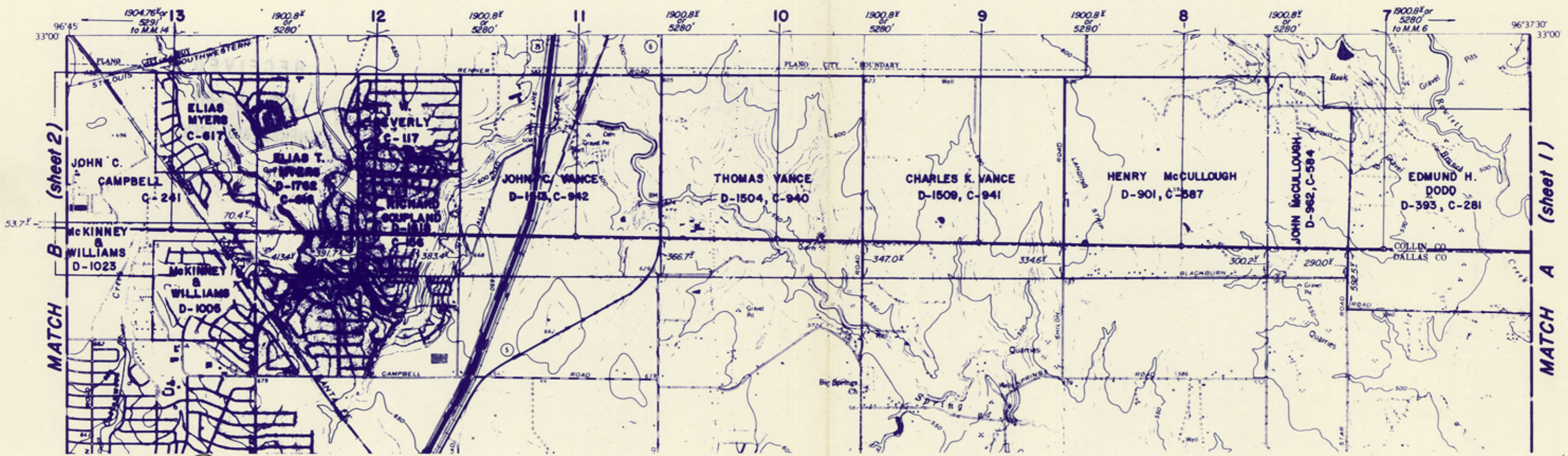
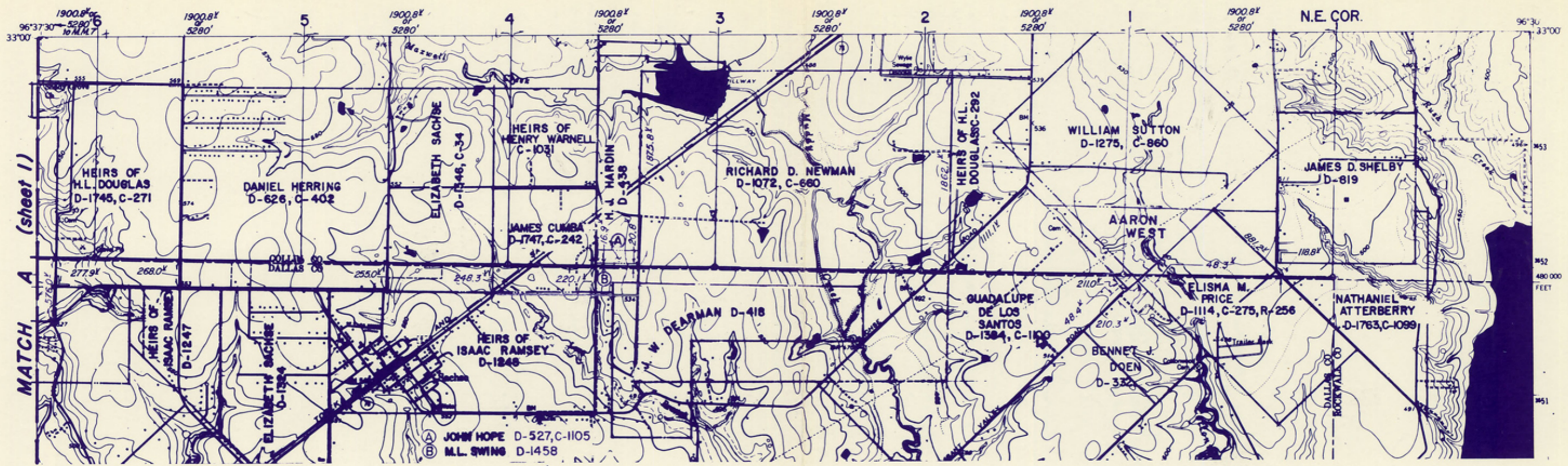
②

File No. County Boundary Line No. 4A
COLLIN
Schedule of ac. in various abstracts
 Filed July 22 County
 By Douglas Howard
GARRY MAURO, Com'r

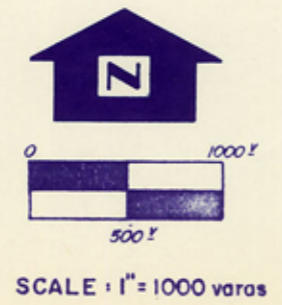
Please note this information on your records.
 This information will be carried in abstract Supplement "I", when published.
 If you should have any further questions, please call.

Sincerely,
 GARRY MAURO
 By: 
 Jack Giberson
 Chief Clerk

GM/JC/gp



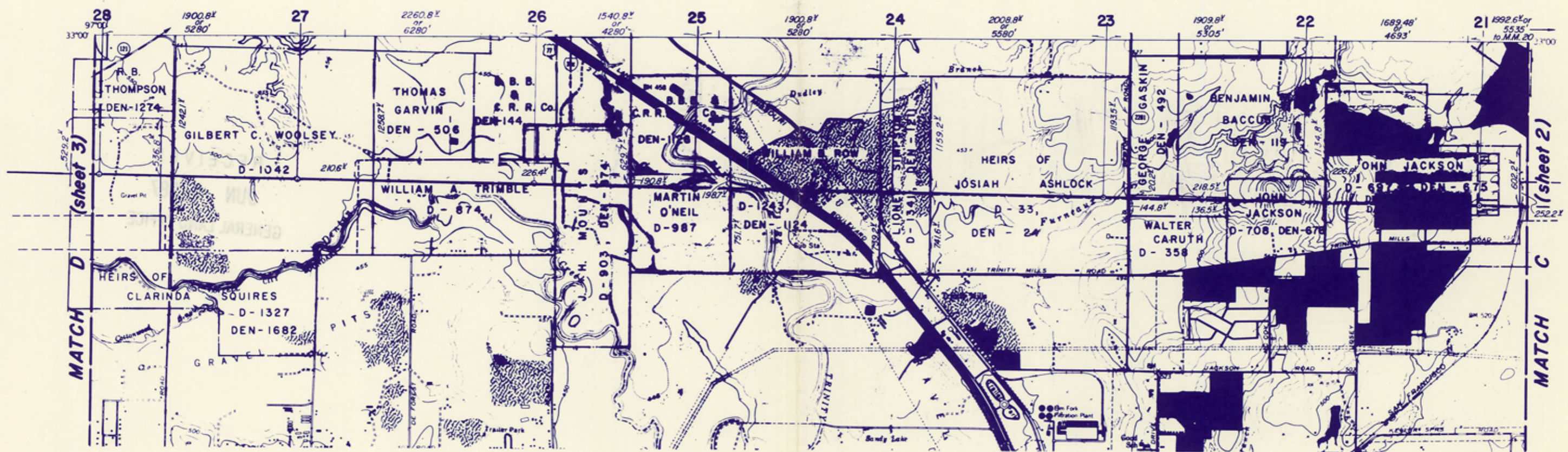
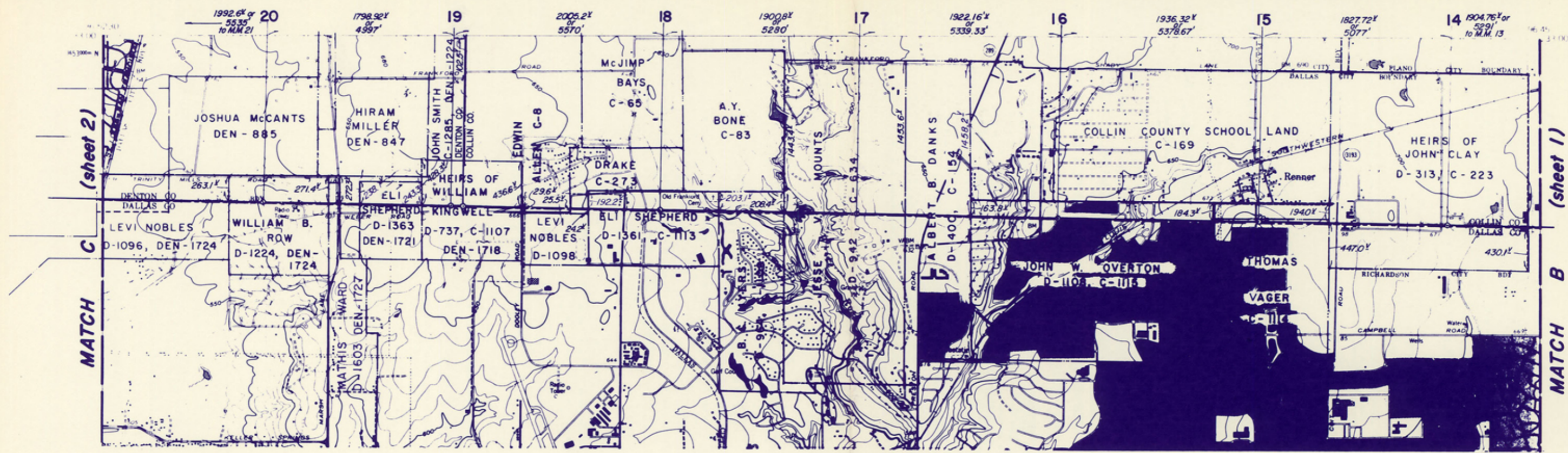
File No. Collin County Bdry Line No. 4
Collin County
North Dallas County Line
 Filed 6-8
 By Garry Mauro, Com'r
Douglas Howard 19 87



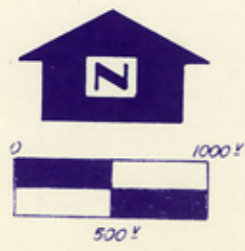
NOTE: ALL MILE MARKERS ARE BRASS CAPS SET IN CONCRETE MONUMENT FLUSH WITH THE GROUND, AND REFERENCED TO STATE PLANE COORDINATES (USGS NAD 27 DATUM)

PRESENTATION
 OF THE
North Dallas County Line
 A PORTION OF THE
South Collin County Line
 AND
 A PORTION OF THE
South Denton County Line

REVS: 3-31-87
 1-2-87



File No. County Bdry Line No. 4
Collin County
North Dallas County Line
 Filed G-8
 By Garry Mauro, Com'r
Douglas Howard 19 87



SCALE: 1" = 1000 feet

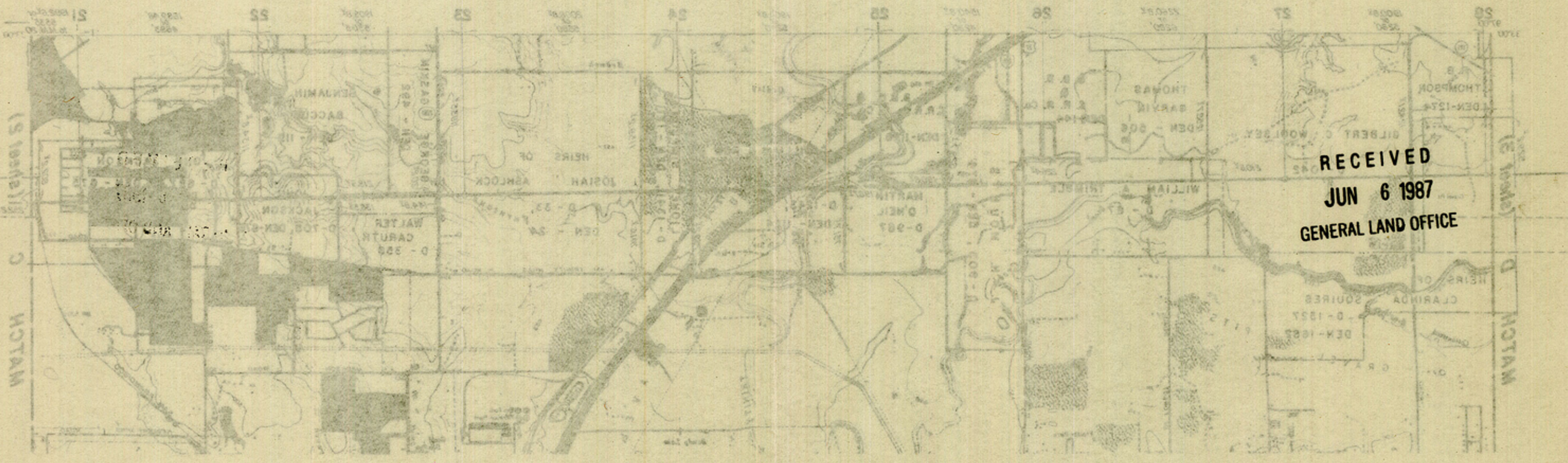
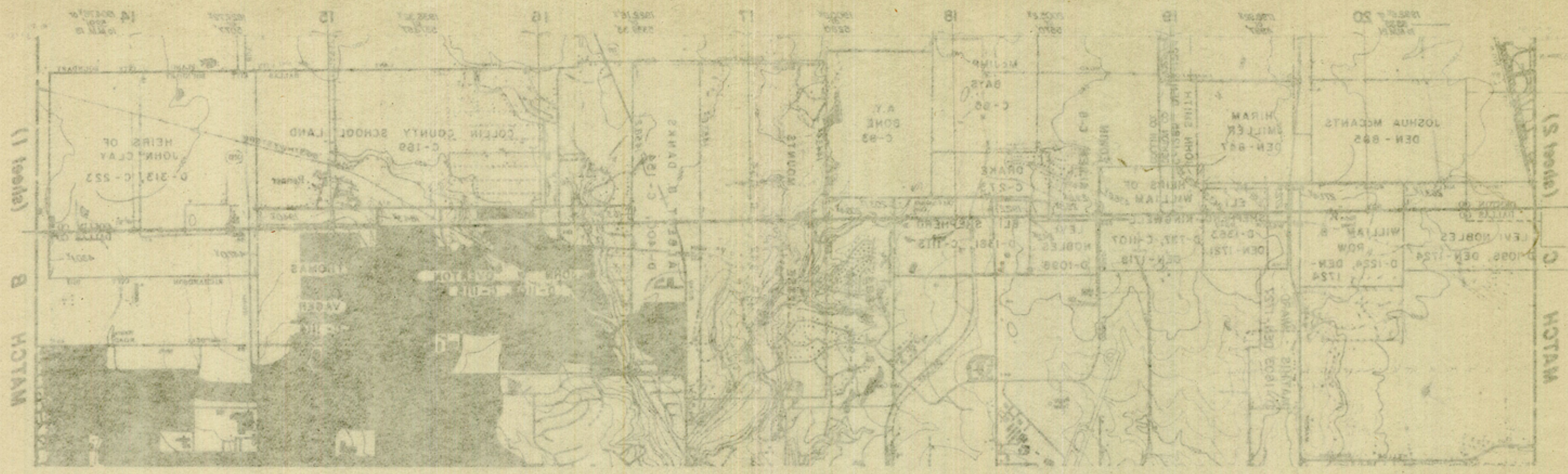
NOTE: ALL MILE MARKERS ARE BRASS CAPS SET IN CONCRETE MONUMENT FLUSH WITH THE GROUND, AND REFERENCED TO STATE PLANE COORDINATES (USGS NAD 27 DATUM)

PRESENTATION
 OF THE
North Dallas County Line
 A PORTION OF THE
South Collin County Line
 AND
 A PORTION OF THE
South Denton County Line

REV'S: 3 31-87
 1 2-87

sheet 2 of 3

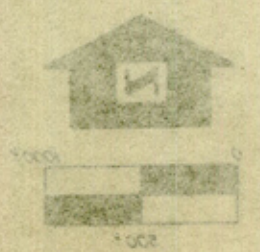
Counter 51913



RECEIVED
 JUN 6 1987
 GENERAL LAND OFFICE

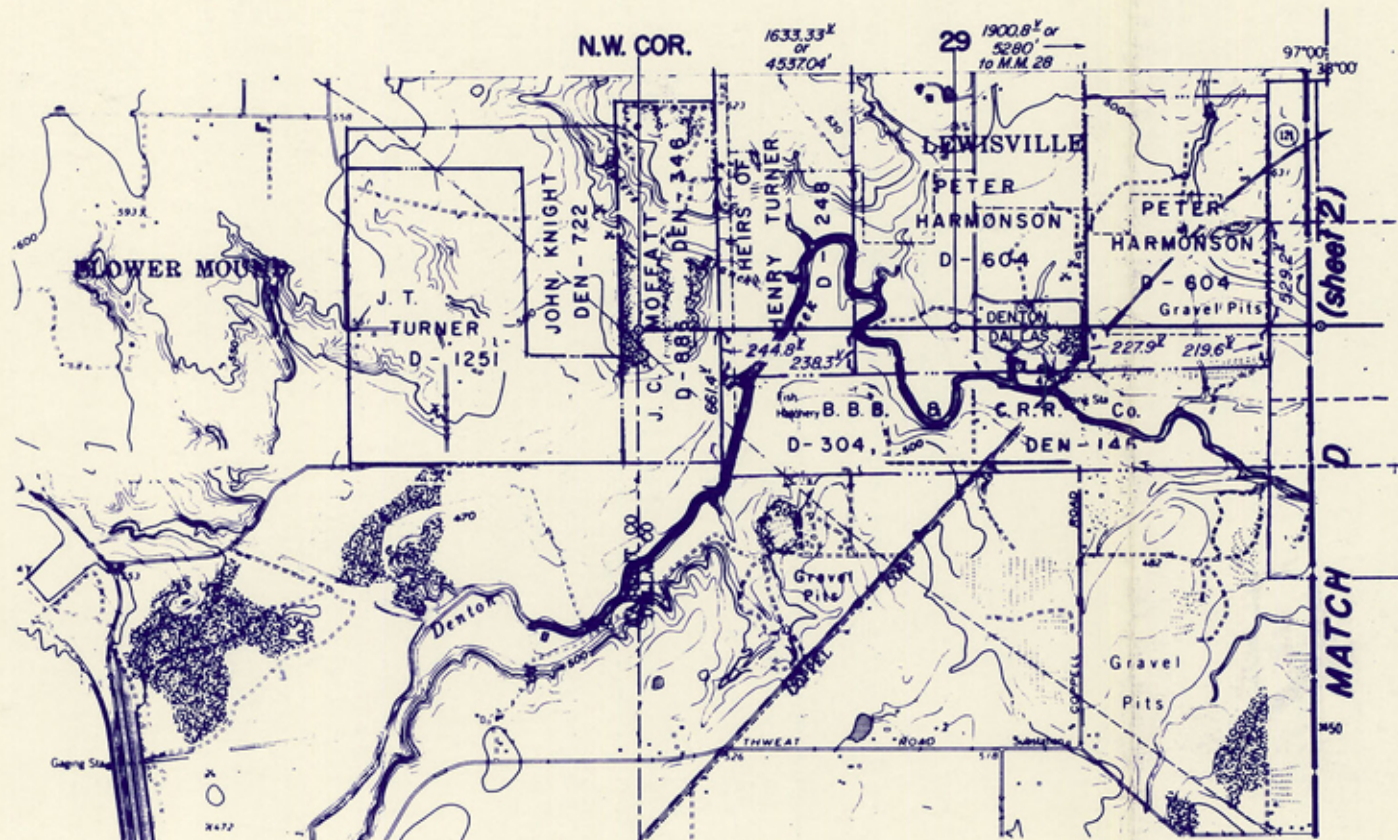
PRESENTATION
 OF THE
North Dallas County Line
 A PORTION OF THE
South Collin County Line
 AND
 A PORTION OF THE
South Denton County Line

NOTE: ALL MILE MARKERS ARE BRASS BARS SET IN CONCRETE
 MONUMENT FLASH WITH THE GROUND AND REFERENCED TO
 STATE PLANE COORDINATES (USGS MAP 22 DATUM)



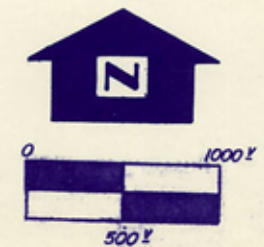
SCALE: 1" = 1000 FEET

By *Debra L. Johnson*
 COUNTY CLERK
 1100 W. 8th Street
 North Dallas County Line
 Collin County
 2100 North County Blvd Line
 Collin County



RECEIVED
JUN 8 1987
GENERAL LAND OFFICE

File No. County Bdry. Line No. 4
COLLIN County
North Dallas County Line
Filed 6-8
By GARRY MAURO, Com'r 19 87
Douglas Howard



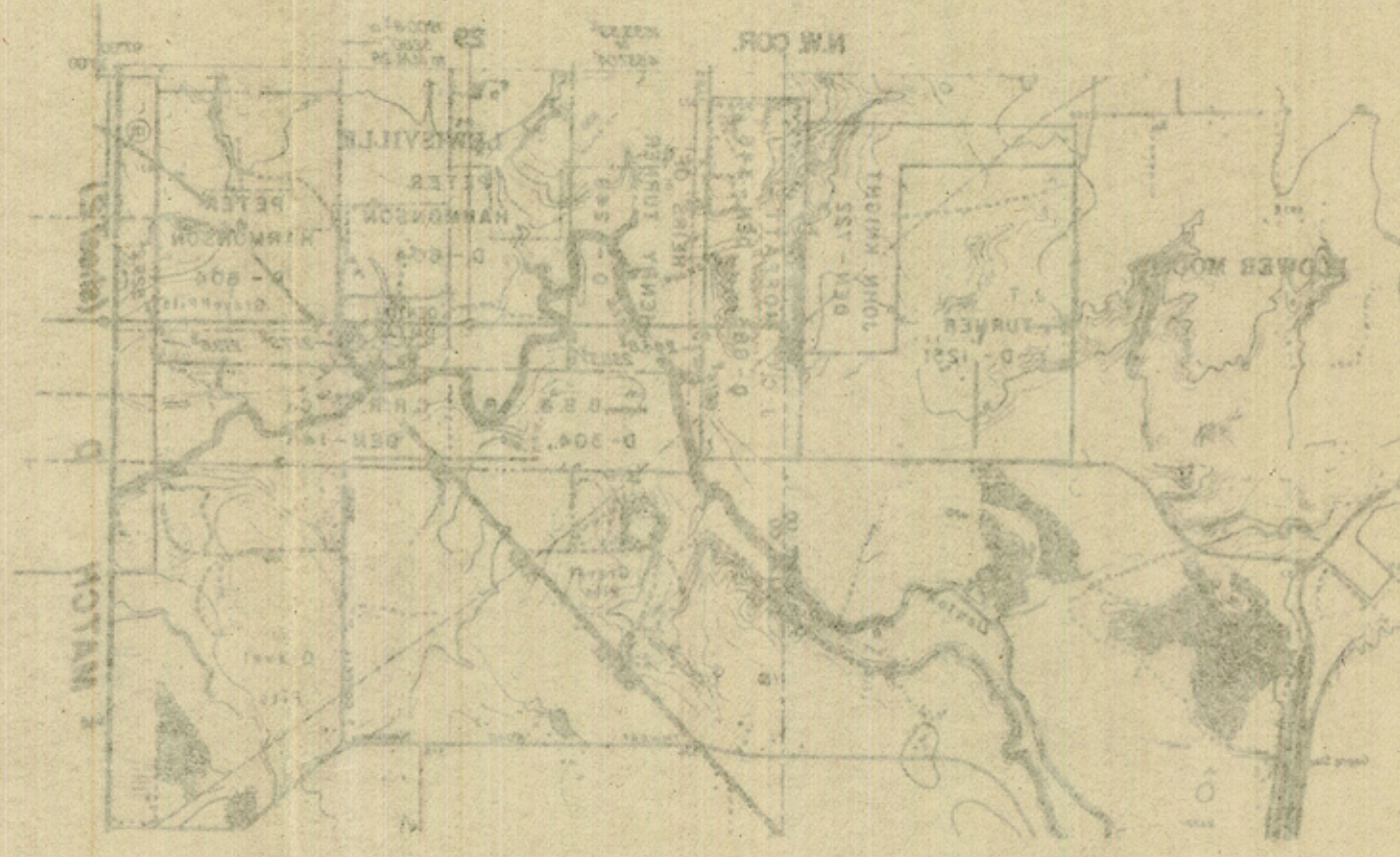
SCALE: 1" = 1000 feet

NOTE: ALL MILE MARKERS ARE BRASS CAPS SET IN CONCRETE MONUMENT FLUSH WITH THE GROUND, AND REFERENCED TO STATE PLANE COORDINATES (USGS NAD 27 DATUM)

PRESENTATION
OF THE
North Dallas County Line
A PORTION OF THE
South Collin County Line
AND
A PORTION OF THE
South Denton County Line

REV'S: 3-31-87
1-2-87

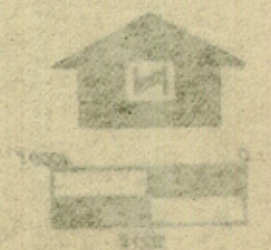
RECEIVED
JUN 6 1987
GENERAL LAND OFFICE



RECEIVED
JUN 6 1987
GENERAL LAND OFFICE

PRESENTATION
OF THE
North Dallas County Line
A PORTION OF THE
South Collin County Line
AND
A PORTION OF THE
South Denton County Line

NOTE: ALL IRON MARKERS AND BRASS CAPS SET IN CONCRETE
MOMENT FRESH WITH THE GROUND, AND REFERENCED TO
STATE PLANE COORDINATES (UTM ZONE 18N DATUM)



FILE NO. County Bdry. Line
North Dallas County Line
GARY MARSHALL
Dallas County Line
1887

Counter 51716