

State of Texas  
County of Cooke

Field Note of the East  
Boundary of Cooke County Beginning at  
the S<sup>W</sup> cor of Grayson County a post  
Mkd 5<sup>1</sup>/<sub>4</sub> M from which the N<sup>E</sup> cor of  
N J Journeys survey ass of Joseph Jeffers  
br N 4<sup>1</sup>/<sub>2</sub> W 1320 varas

1<sup>st</sup> Mile Going North at 1900<sup>7</sup>/<sub>10</sub> varas set a post  
from which two black Jacks Mkd  
x br N 70 W 170 varas

2<sup>nd</sup> Mile Going North at 330 varas a branch c  
N 77 W at 1820 varas timber at 1900<sup>8</sup>/<sub>10</sub>  
set a post from which a post oak  
Mkd 2 M br S 75 E 3 varas

3<sup>rd</sup> Mile Going North at 330 varas Stricklands  
Creek c N 50 W 1180 varas from at 1520  
varas a small creek c S 10 W at 1900<sup>8</sup>/<sub>10</sub>  
varas set a post from which a post  
oak Mkd x br South 130 varas

4<sup>th</sup> Mile Going North in more 1900<sup>7</sup>/<sub>10</sub> varas  
set a post from which two Elms  
Mkd 4 M br North 650 varas

5<sup>th</sup> Mile Going North at 1300 varas a branch c N  
82 W at 1870 varas Rangers Road c S 54 E  
at 1900<sup>8</sup>/<sub>10</sub> varas set a post from which  
a post oak Mkd c L br N 160 varas

6<sup>th</sup> Mile Going North 210 varas timber of Jordan Bottom  
800 varas the East bank at 1600 varas cross  
Jordan at 1900<sup>8</sup>/<sub>10</sub> varas a post from which  
a burr oak Mkd 6 M br 47 W 100 varas

7<sup>th</sup> Mile Going North 1510 varas Hills Road c S 50 W  
at 1900<sup>7</sup>/<sub>10</sub> varas a black oak Mkd 7 M on the  
bank of small branch c N 85 E

- 8<sup>th</sup> Mile Going North at 1130 varas across Jordan  
c N 16 E at 1900<sup>th</sup> varas a small black  
history Mka 8M from which a post oak  
Mka 8M to S 9 E 11 varas
- 9<sup>th</sup> Mile Going North at 1900<sup>th</sup> varas set a post  
from which a post oak Mka 9M to N 19 W  
10 varas
- 10<sup>th</sup> Mile Going North at 650 varas a branch c S 35 W  
at 1900<sup>th</sup> varas a small black jack Mka  
x from which a post oak Mka x to N  
11 W 5<sup>1</sup>/<sub>2</sub> varas
- 11<sup>th</sup> Mile Going North at 1400 varas a branch of Jordan  
c S 50 W at 1900<sup>th</sup> varas a small post oak  
Mka 11M from which a post oak Mka 11M  
to N 13 E 3 varas
- 12<sup>th</sup> Mile Going North at 1050 varas Phoenix branch  
c S 10 W at 1240 varas Burns creek c S 35 W  
at 1900<sup>th</sup> varas a post from which an  
Elm Mka 12M to N 35 W 12 varas
- 13<sup>th</sup> Mile Going North at 1900<sup>th</sup> varas a small black  
jack Mka x from which a post oak  
Mka 13M to N 40 W 2 varas
- 14<sup>th</sup> Mile Going North at 350 varas across Jordan  
c S 50 W at 1900<sup>th</sup> varas a post from  
which a post oak Mka 14M to N 19 W 3  
varas
- 15<sup>th</sup> Mile Going North at 800 varas prairie at  
1570 varas a branch c East at 1880 varas  
Road from Sherman to Rangers station  
c N 73 W at 1900<sup>th</sup> varas a post from  
which a post oak Mka 15M to South  
330 varas
- 16<sup>th</sup> Mile Going North in prairie 1900<sup>th</sup> varas  
set a post Mka 16M No bearing true mer

- 17<sup>th</sup> Mile Going North in prairie at 670 varas  
Preston Road c N 72 E at 1900<sup>th</sup> varas  
set a post on a branch Mka 17M
- 18<sup>th</sup> Mile Going North at 150 varas Chaffault  
Cabin at 580 varas timber at 740  
varas a branch of Mineral c N 60 E  
at 1400 varas the same branch c 6 E  
at 1900<sup>th</sup> varas set a post from which  
a black Hickory Mka 18M to S 15 N 5 var
- 19<sup>th</sup> Mile Going North at 280 varas West fork of  
Mineral creek c S 53 E at 1850 varas  
another Large branch of Mineral at  
1900<sup>th</sup> varas a Cotton Wood standing on  
the right bank of the branch Mka 19M
- 20<sup>th</sup> Mile Going North at 1900<sup>th</sup> varas a black Hickory  
Mka 20M from which a black Hickory  
Mka X to S 1 E 3 varas
- 21<sup>st</sup> Mile Going North at 500 varas prairie at  
1550 varas the California Road c N 75  
N at 1900<sup>th</sup> varas set a post from  
which a double black oak Mka with a  
blaze & 2 notches to N 170 varas
- 22<sup>nd</sup> Mile Going North at 1900<sup>th</sup> set a post in the  
of a small prairie Mka 22
- 23<sup>rd</sup> Mile Going North at 960 varas Sandy  
creek a brach of Mineral c N 54 E at  
1900<sup>th</sup> varas set a post Mka XXIII  
from which a double spanish oak  
Mka XXIII to S 17 N 5 varas
- 24<sup>th</sup> Mile Going North at 10 varas bushy creek  
c East at 60 varas prairie at 1860  
varas timber at 1900<sup>th</sup> varas set a post

MkA XXIII from which a black oak  
MkA XXIII M br N 20 W 4 1/2 varas

25<sup>th</sup> Mile Going North at 1900<sup>th</sup> varas set a post  
Oak MkA XXV

26<sup>th</sup> Mile Going North at 340 varas a creek c S 51 E  
at 1450 varas prairie at 1900<sup>th</sup> varas set  
a post MkA 26 from which a post oak  
MkA XXVI br North 680 varas

27<sup>th</sup> Mile Going North at 680 varas timber at  
790 varas creek c N 80 E at 820 varas prairie  
at 1900<sup>th</sup> varas set a post in prairie  
MkA XXVII

28<sup>th</sup> Mile Going North at 1900<sup>th</sup> varas set a post  
MkA XXVIII from which a post oak MkA XXVIII  
M br S 64 E 9 varas

29<sup>th</sup> Mile Going North at 700 varas timber at  
1250 varas Cedar creek c S 80 E at 1900<sup>th</sup> varas  
set a post MkA XXIX M from which a post  
Oak MkA XXIX M br S 34 W 5 varas

30<sup>th</sup> Mile Going North at 1900<sup>th</sup> varas a post oak  
Mk XXX

31<sup>st</sup> Mile Going North at 410 varas a creek c East  
at 750 varas prairie at 1350 varas timber  
at 1900<sup>th</sup> varas set a post MkA XXXI from  
which a post oak MkA XXXI br South  
8 varas

32<sup>nd</sup> Mile Going North at 810 varas Spring creek  
c N 20 E at 1830 varas prave at 1900<sup>th</sup> varas  
set a post in prave Mka XXXII

33<sup>rd</sup> Mile Going North at 950 varas timber at  
1050 varas another branch of Spring creek  
c N 60 E at 1530 varas another branch of  
same creek c N 85 E at 1860 varas prave  
at 1900<sup>th</sup> varas set a post Mka XXXIII  
from which a double post Oak Mka  
XXXIII bis South 40 varas

34<sup>th</sup> Mile Going North at 1900<sup>th</sup> varas set a post  
in prave Mka XXXIV

35<sup>th</sup> Mile Going North at 420 varas timber at  
720 varas a creek c East at 1900<sup>th</sup> varas  
set a post Mka XXXV from which a  
black jack Mka XXXV bis S 11 E 28 varas

36<sup>th</sup> Mile Going North at 1200 varas a Lake in  
Red River Bottom at 1900<sup>th</sup> varas set a  
post in prave bottom

37<sup>th</sup> Mile Going North at 1450 varas a cotton wood  
on the Bank of Red River Mka C C 04  
from which a cotton wood Mka X bis N  
16 N 11 varas also 3 cotton woods Mka X  
bis S 62<sup>nd</sup> E 17 varas at the N<sup>th</sup> cor of the  
Coffey survey as of J Stuart bis S 85 N  
3300 varas of Andrew J Shannon  
of James Shannon

Surveyed Sept 19<sup>th</sup> Cham Min

1849

Daniel Montague Surveyor

State of Texas }  
County of Cooke }

I hereby certify That the foregoing  
field notes of the East and South bound-  
ary of Cooke county were submitted to the  
County of said county and read by the  
Said and ordered to be transmitted to  
The Court You Said Office

Oct 29<sup>th</sup> 1849

Attest

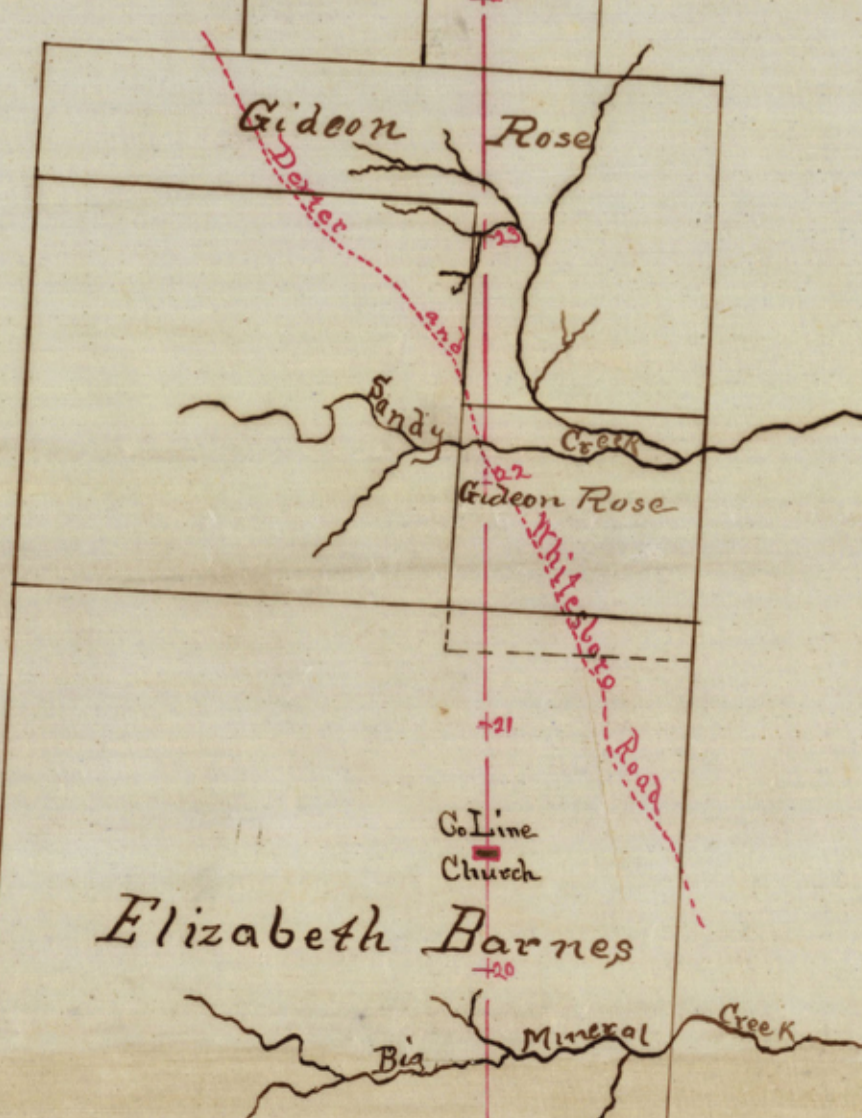
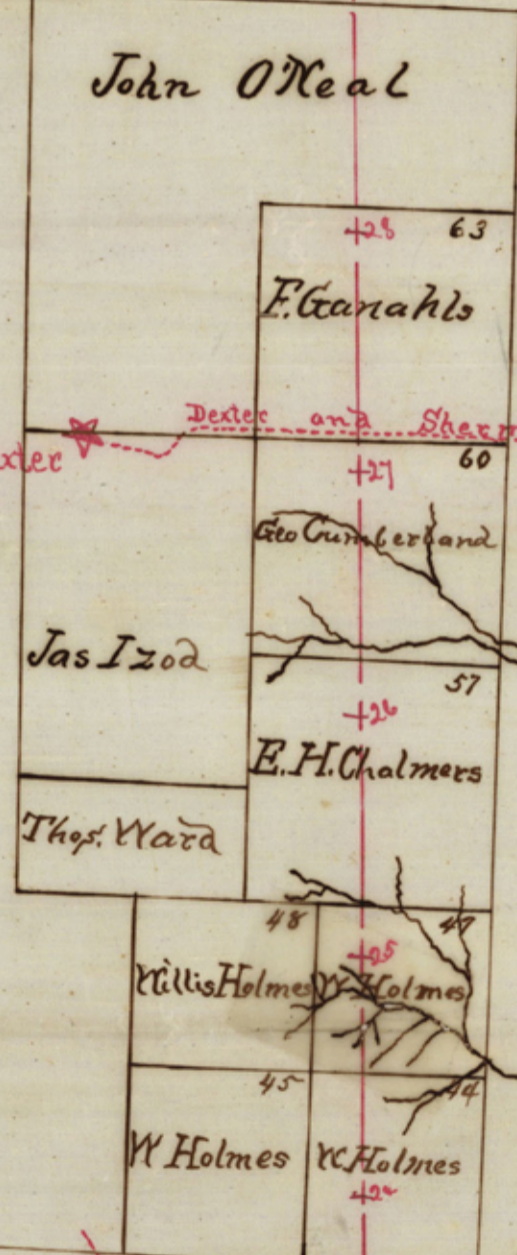
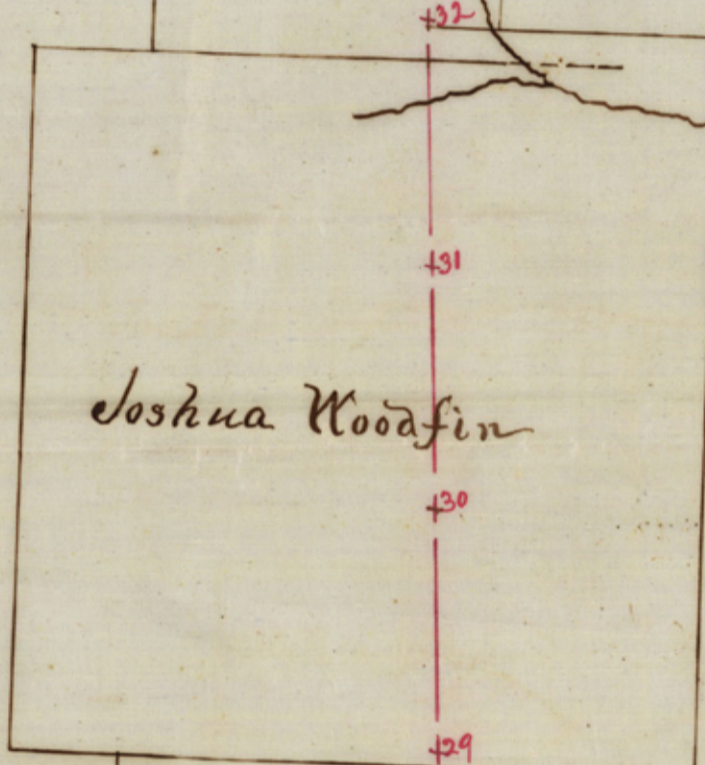
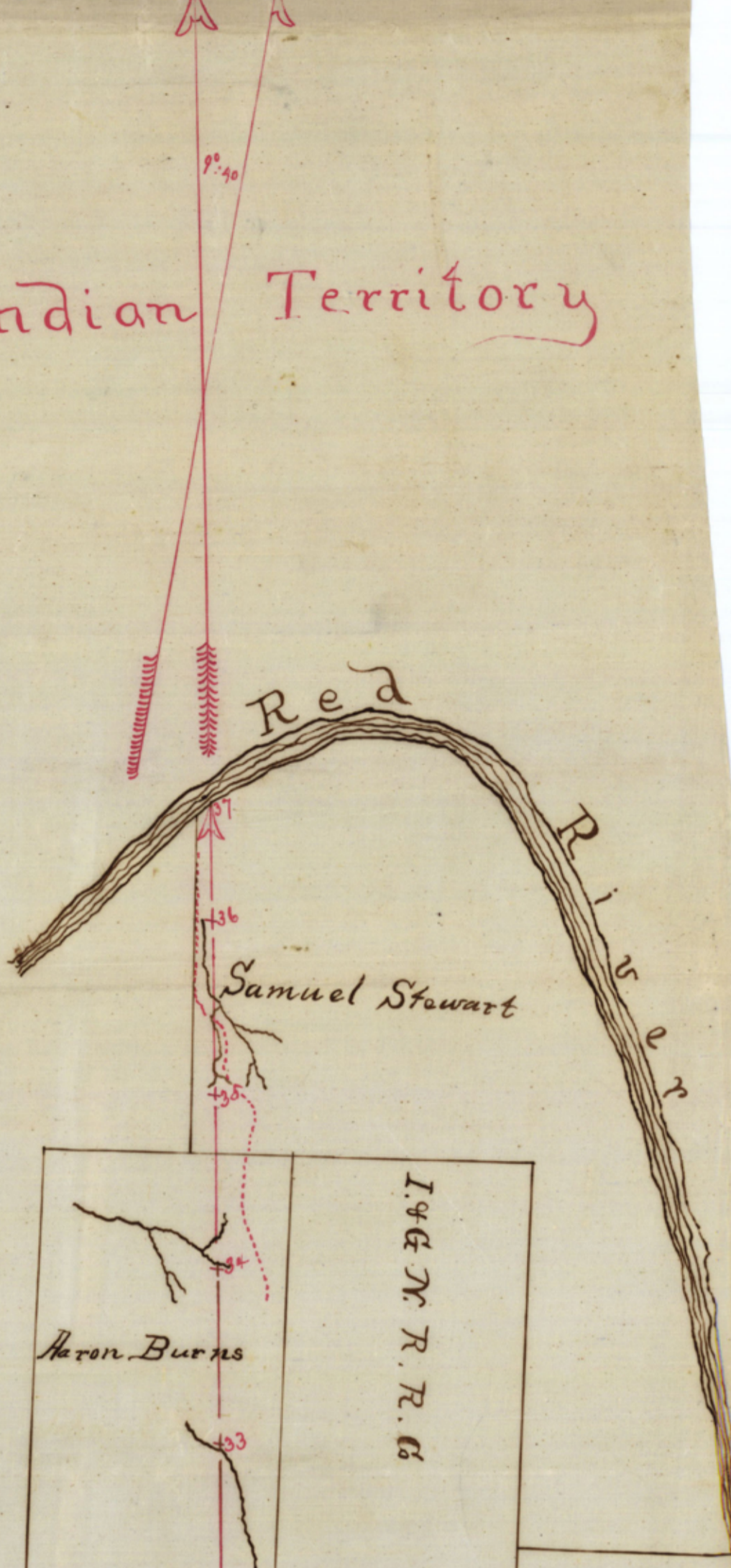
Stephen D Brown  
Clerk, Co. C, C

1a Cooke Co. Bdry

Cooke Co. Bdry

# Beautiful Indian Territory

Cooke County File No 19



0  
 1  
 2  
 3  
 4  
 5  
 6  
 7  
 8  
 9  
 10  
 11  
 12  
 13  
 14  
 15  
 16  
 17  
 18  
 19  
 20  
 21  
 22  
 23  
 24  
 25  
 26  
 27  
 28  
 29  
 30  
 31  
 32  
 33  
 34  
 35  
 36  
 37  
 38  
 39  
 40  
 41  
 42  
 43  
 44  
 45  
 46  
 47  
 48  
 49  
 50  
 51  
 52  
 53  
 54  
 55  
 56  
 57  
 58  
 59  
 60  
 61  
 62  
 63  
 64  
 65  
 66  
 67  
 68  
 69  
 70  
 71  
 72  
 73  
 74  
 75  
 76  
 77  
 78  
 79  
 80  
 81  
 82  
 83  
 84  
 85  
 86  
 87  
 88  
 89  
 90  
 91  
 92  
 93  
 94  
 95  
 96  
 97  
 98  
 99  
 100

East Bdry  
line of  
Cooke Co.