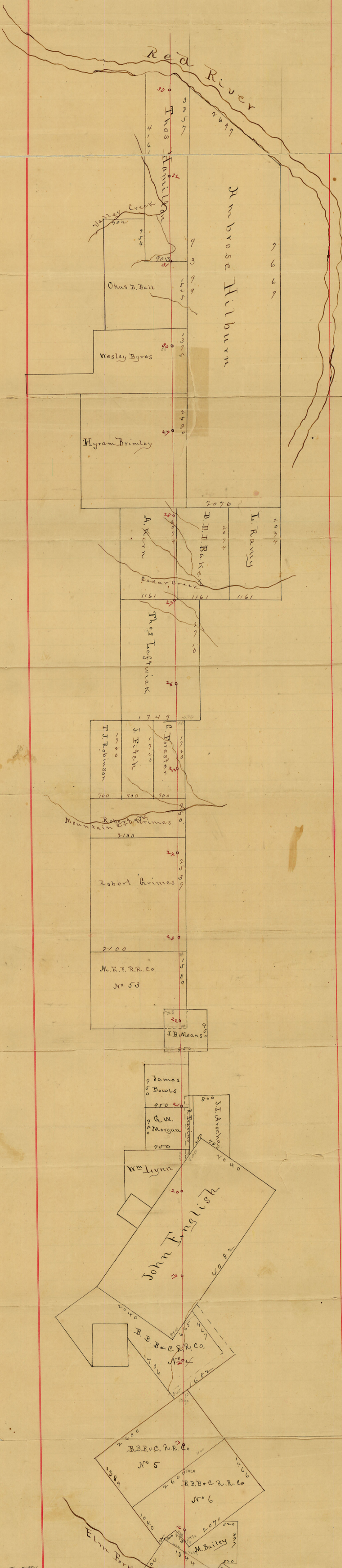
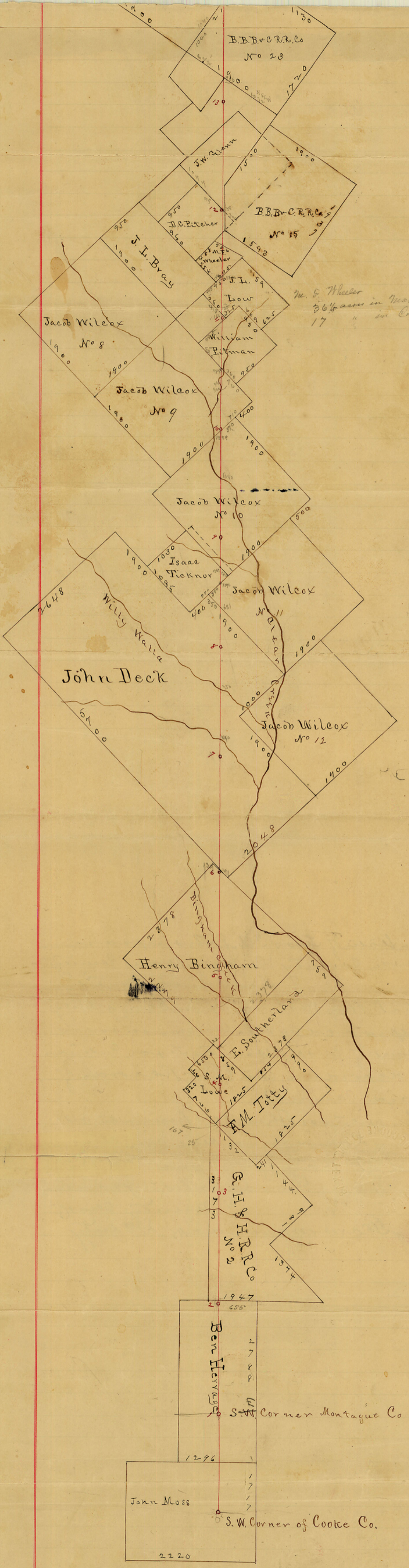




Counter 51873

No 24





W. S. Wheeler
 36 1/2 acres in Montague
 17 " in Cooke

B.B.B. + C.R.R. Co
 No 23

B.B.B. + C.R.R. Co
 No 15

J.W. Glenn

D.C. Pitcher

J. I. Bray

Jacob Wileox
 No 8

Jacob Wileox
 No 9

Jacob Wileox
 No 10

Isaac Ticknor

Jacob Wileox
 No 11

John Deck

Jacob Wileox
 No 12

Henry Bingham

E. Southerland

F.M. Tully

G.H. & H.R. Co
 No 2

Ben Hervaage

S.W. Corner Montague Co

John Moss

S.W. Corner of Cooke Co.

The State of Texas } A. J. Thompson
Cooke County } Co. Clerk of Cooke County
Texas hereby certify
that this Plat was after being duly
approved by the Commissioners
Court of Cooke County Texas, entered
of Record on the Plat-Record of
said County.

In witness whereof I hereunto set
my hand and seal on this
the 19th day of August - A.D. 1880

A. J. Thompson
County Clerk
By Edward W. ... Deputy

7x

No 20
Boundary
-tween the
of
Cooke and Montague

~~8~~ (5)
Filed Aug 22nd 1885

Abstract corrected July
27th 1886 and copy for-
warded the Com^r of
Pub. Accts.

Beaumont

Cooke Co. Bdry

Field notes of the Western
boundary line of Cooke County and the
Eastern boundary line of Montague County
as established by A. G. Crowell
and D. L. R. Butt

Beginning at the North West
Corner of Denton County as established by

White a pile rock on large flat rock
about 1 chain wide and 2 chains long on
which a branch runs which falls down
a cascade N 65 E 1.88 ch. also live Oak MKS
M. W. C. S. Bears S 88 $\frac{3}{4}$ E 8 $\frac{18}{100}$ ch also live Oak X
Bears S 88 $\frac{1}{2}$ E 8 $\frac{13}{100}$ ch S^o MKS II Is North about
3 chains Thence West 6 miles for S. W. Corner
of Cooke County Thence North 1897 varas
The South East Corner of Montague County
as established by

Set a Bos de Arc Post marked on the South
1. on the East C.C. on the West M.C. set into the
ground 3 feet.

Thence North on the 1st mile from the S. E. Corner
of Montague as established. and the 2nd mile on
Cooke County line at 1900 varas Set Bos de Arc
post marked 2. on South side on East C.C. on West
M.C. 1.

North on 3rd mile at 10 varas cross the N.
B. line of Benjamin Herrage Survey 655 West from
his N. E. Corner and 118 varas East from the S. W.
Corner G. H. & H. R. Co Survey No 2 at 1570 varas
Branch course S. E. at 1900^{varas set} Bos de Arc post

marked 3 on south side on East side C.C. on West M.C. 2. on Ora ridge

North on 4th mile at 1060 ras Branch at 1138 ras Cross S.B. line F. M. Totty Survey 25 ras S45E from his West corner and 167 ras S.E. from the N.W. corner of the G. H. + H. R.R. Co Survey No 2 at 1173 ras Cross N.W. B. line of said Totty Survey 25 ras N45E from the West corner of same, and also cross the S.E. B. line of S. M. Lowe Survey 25 ras N45E from his South corner at 1485 ras Branch at 1900 ras set Boss de Arc post near Small Spring marked on South side 4 on East C.C. on West M.C. 3.

North on 5th mile at 612 ras Cross N.E. B. line of S. M. Lowe Survey 122 ras S45E from his north corner and cross S.W. B. line of Elijah Southerland 22 ras S.E. from his West corner at 638 ras Cross the N.W. B. line of said Southerland Survey 22 ras N.E. from his West corner, and also cross S.E. B. line of Henry Bingham Survey 22 ras N.E. from his South corner, at 1152 ras Totty's Branch at 1900 ras set Boss de Arc post in low brush marked on South side 5 on East C.C. on West M.C. 4.

North on 6th mile at 410 ras Branch at 720 ras Bingham Creek at 1900 ras set Boss de Arc post marked on South side 6. on East C.C. on West M.C. 5.

North on 7th mile at 20 ras cross the N.E. B. line of Henry Bingham Survey 139 ras S.E. from his north corner, also cross the S.W. B. line of John Deek Survey 191 ras N.W. from his South corner at 1900 ras set Boss de Arc post in low brush

Marked on south side 7 on East C.C. on the West M.C. 6.

North on the 8th mile at 190 ras branch at 950 ras Millie Walla Creek at 1900 ras set Base de Arc Post on side of small mound near a road marked 8 on south side on East C.C. on West M.C. 7

North on 9th mile at 140 ras enter field at 681 ras Cross the S.W. line of Jacob Wilcox Survey No 11 350 ras S.E. from its West corner and also cross N.E. B. line John Deck Survey 350 ras S.E. from its North East corner. at 1190 ras cross N.W. B. line of said Jacob Wilcox No 11 370 ras N.E. from its West corner also cross the S.E. B. line Isaac Ticknor Survey 770 ras N.E. from its South corner. at 1381 ras cross Isaac Ticknor N.E. B. line 110 ras N 43 W from his East corner. also cross the S.W. B. line Jacob Wilcox No 10 N 43 W 140 ras from his South corner at 1680 ras branch of Millie Walla Creek at 1900 ras set Base de arc Post in field marked on the south side 9 on the East C.C. on the West M.C. 8

North on the 10th mile at 1080 ras Clear Creek at 1854 ras cross the N.W. B. line Jacob Wilcox Sur. No 10 370 ras S 47 W from his North corner also cross S.E. B. line Jacob Wilcox No 9 710 ras S 47 W from his East corner. at 1900 ras set Base de arc Post on top ridge marked 10 on the South side on the East C.C. on the West M.C. 9-

North on the 11th mile at 900 ras branch at 950-76 The same at 995 ras cross the N.E. B. line of Jacob Wilcox No 9 760 ras N 43 W from its

East corner also cross the S.W. B. line of William Pitman Survey 360 rs N 43 W from his South corner at 1880 was cross the N.W. B. line of Wm Pitman Sur. 485 was N 47 E from his West corner and cross S.E. B. line of
 Surrey 485 rs N 47 E from its South corner at 1900 rs set a Bore de arc post on side of small ridge marked 11 on the South side on East C.C. on West M.C. 10.

North on 12th mile at 166 rs cross S.W. B. line J. L. Low Survey 135 rs N 43 W from his North South corner at 852 was cross his N.W. B. line 445 was N 47 E from his West corner also cross S.E. B. line of M. G. Wheeler Survey 120 rs N 47 E from her South corner at 1466 was cross her N.E. B. line 50 rs S 55 E from her North corner at 1524 was cross the S.E. B. line of D.C. Pitcher Survey 650 rs N 47 E from his South corner at 1860 rs Ravine at 1900 rs set a Bore de arc post in Pra. marked 12 on the South side on the East C.C. on the West M.C. 11.

North on the 13th mile at 34 was cross N.E. B. line of D.C. Pitcher Survey 300 was N 43 W from his East corner and cross the S.W. B. line J. N. Gleason Survey 1044 was S 43 E from his West corner at 1424 cross his N.W. B. line 1040 was N 47 E from his West corner. also S.E. B. line of
 at 1900 was set Bore de arc post marked 13th on the South side on the East C.C. on the West M.C. 12.

North on the 14th mile at 400 was cross the S.W. B. line B. B. B. + C. R. R. Co Survey No 23 1072 rs N 55 W from its South corner at 1720 was cross

B³

- ✓ The N.W. B. line of said No 23 1040 was N 35 E from its West corner also cross the S.E. B. line line of
- ✓ No 24 B.B. B. & C. R.R. Co Sur. 1040 was N 35 E from its South corner at 1900 was set Bore de arc post on edge of Pra Bluff marked on the South side 14 on the East C.C. on the West M.C. 13.
- North on the 15th mile 868 was cross N.E. B line of
- ✓ No 24 B.B. B. & C. R.R. Co Sur. 600 was N 55 W from its East corner and cross the S.W. B. line of G. W. Hoover Sur. 67 was S 55 E from its West corner at 960 was cross the
- ✓ N.W. B. line of said Hoover Survey 70 was N 35 E from its West corner also cross S.E. B. line of S.S. Hoffman Survey 70 was N 35 E from its South corner at 1791 was cross N.E. B. line of said Hoffman Survey 283 was N 55 W from its East corner and also cross the S.W. B. line of E. Boleuger Survey 1159 was N 55 W from its South corner at 1900 was set Bore de Arc post near bank of branch marked on South side 15 on the East C.C. on the West M.C. 14.
- North on the 16th mile at 29 was branch at 200 was Elm Fork of Trinity River course S.E. at 800 was branch at 1285 was N.E. B. line of
- ✓ E. Boleuger Survey 600 was S 55 E from its North corner also cross S.W. B. line of M. Bailey Survey 600 was S 55 E from its West corner at 1478 was cross N.E. B. line of M. Bailey Survey 415 was S 37 E. from his North corner also cross one of the S.W. B. lines of Survey No 6 B.B. B. & C. R.R. Co. 415 was S 37 E from its North Ell corner at 1900 was set Bore de Arc post on edge of Pra. Bluff marked on South side 16 on East C.C. on West M.C. 15.

B⁴

6
2000 Co. B. B. & C. R. R. Co. Sur. 1100 vs S53W

North on 17th mile at 550 vs ravine at 1460
Cross N. W. B. line No 6 B. B. B. & C. R. R. Co Sur, 1100 vs S53W
from its North corner and also cross S. E. B. line of
No 5 B. B. B. & C. R. R. Co Sur. 1100 vs S53W from its East
Corner. 1600 vs Ravine at 1900 vs set Bose de Arc
post on Pra ridge marked on the South 17 on the
East C.C. on the West M.C. 16.

North on the 18th mile at 1290 vs cross N. W. B.
line of No 5 B. B. B. & C. R. R. Co. Sur. 50 vs S53W from its
North corner and also cross S. E. B. line No 4 B. B. B. & C.
R. R. Co. Sur. 345 vs N53E from its South corner at
1520 vs Branch at 1900 vs set a Bose de Arc
post at foot of Pra Bluff marked on South side
18 on the East side C.C. on the West M.C. 17

North on the 19th mile at 108 vs Gainesville and
St Joe road also in Branch at 800 vs cross N. W. line
of No 4 B. B. B. & C. R. R. Co Sur. and also S. E. B. line of John
English Survey 374 vs N35E from its South corner
at 1900 vs set a Bose de arc post in Pra. marked
19 on South side on the East C.C. on the West M.C. 18

North on the 20th mile at 80 vs Maryville & St
Joe road at 1900 set a Bose de arc post in
open timber marked on South side 20 on the East
C.C. on the West M.C. 19

North on 21st mile at 550 vs cross the N. W. B. line
of John English Survey 800 vs S35W from its North
corner and cross the S. E. line of Wm Lynn ^{survey} 200 vs
S35W from its North S. E. corner at 920 vs cross his
N. B. line 175 vs West from his N. E. corner and also
cross the S. B. line G. W. Morgan Survey 175 vs West
of his S. E. corner. at 1870 vs cross N. B. line of G. W.

5
B

✓ Morgan Survey 175 was West from his N.E. Corner
✓ also cross the S.B. line James Bowls Survey 175 was
West from his S.E. Corner. at 1900 was set a Boze
de Arc Post in small Pra. marked 21 on the South
side on the East side C.C. on the West M.C. 20.

North on the 22nd mile at 920 was cross the N.B. line
James Bowls Survey 182 was West from his N.E. Corner
and also the S.B. line of Survey 182 was

West of its S.E. Corner at 1210 was cross its N.B. line & the
✓ S.B. line of Joseph H. Means Survey 335 was East of
his S.W. Corner at 1900 was set a Boze de Arc Post
in a field marked 22 on the South side on the East C.C.
on the West M.C. 21

North on the 23rd mile at 260 was cross the N.B.
✓ line Joseph H. Means Survey 325 was East from
his N.W. Corner and also cross S.B. line M.E.P. R.R.
Co Survey No 53 - 140 was West of a point at which
its E.B. line intersects the N.B. line of Joseph H. Means
✓ Survey. at 1580 was cross its N.B. line 140 was West
from its N.E. Corner and also cross the S.B. line of Robert
✓ Grimes 5/3 Labor Survey 140 was West from its S.E. Cor-
ner at 1900 was set a Boze de Arc Post near a
small drain in open woods marked 23 on the South
on the East C.C. on the West M.C. 22.

North on the 24th mile at 1160 a small drain
at 1440 a prairie hollow at 1900 was set a Boze de
arc Post in low brush marked on the South 24
on the East C.C. on the West M.C. 23.

North on the 25th mile at 360 was cross the N.B. line
✓ of Robert Grimes 5/3 Labor Survey 140 was West from
its N.E. Corner and also cross the S.B. line of a

- ✓ 320 acre Survey for Robert St. Grimes 140 rods West from his S.E. corner at 800 rods Mountain Creek Course S.E. at 960 rods Branch at 1100 rods Bluff at 1220 rods Cross the N.B. line of 320 acre Survey for Robert St. Grimes 140 rods West from his N.E. corner and also S.B. line C. Forester Survey 140 rods West from his S.E. corner at 1440 rods a Branch at 1900 rods Set a Bore de Arc post in a field marked 25 on the South side on the East C.C. on the West M.C. 24.

North on the 26th mile at 1000 rods Branch at 1100 rods Branch at 1150 rods Cross N.B. line of C. Forester Survey

- ✓ 140 rods West from its N.E. corner and also cross the S. B. line of Thomas Leftonick Survey 490 rods West from its S.E. corner at 1400 rods Pra. at 1900 rods Set a Bore de Arc post in Prairie marked on the South side 26 on the East side C.C. on the West M.C. 25.

North on the 27th mile at 1760 rods Branch at 1900 rods Set a Bore de Arc post near a small drain marked 27 on the South side on the East C.C. on the West M.C. 26.

North on the 28th mile at 10 rods Cross the N.B. line

- ✓ Thos Leftonick Survey 490 rods West from its N.E. corner and also cross the S.B. line of A. Kern Survey 50 rods West from its S.E. corner at 170 rods Branch 230 rods Branch at 620 Cedar Creek at 1100 rods a Branch of Cedar Creek at 1800 rods Branch at 1900 rods Set a Bore de arc post on ridge in Black Jack timber marked on the South 28 on the East C.C. on the West M.C. 27

North on the 29th mile at 80 rods Branch at 220 rods

- ✓ Cross the N.B. line of A. Kern Survey 50 rods West

✓ from its N.E. corner and also cross the S.B. line of
✓ Hiram Brimley Survey 300 rs West from its S.E.
corner at 1900 rs set a Bore de Arc post marked
on the South 29 on the East C.C. on the West M.C. 28.
North on the 30th mile at 925 rs cross the N.B. line
✓ of Hiram Brimley Survey 335 rs West from his N.E.
corner and also cross the S.B. line of Wesley Byrnes
✓ Survey 325 rs West from his S.E. corner, at 1420 rs
branch at 1900 rs set a Bore de Arc post in open woods
marked 30 on the South side on the East C.C. on the West
M.C. 29

✓ North on the 31st mile at 420 rs cross S.B. line of
✓ Chas D. Ball Survey 353 rs West of his S.E. corner
✓ also cross the N.B. line of Wesley Byrnes Survey 353 rs
West from his N.E. corner at 1400 rs branch at 1900 rs
set a Bore de Arc post in open woods marked
31 on the South side on the East C.C. on the West M.
C. 30

✓ North on the 32 mile at 50 rs cross the N.B. line
✓ of Chas D. Ball Survey 375 rs West of his N.E. corner
and also cross the S.B. line of the Thomas Hamilton
✓ Survey 375 rs West of his S.E. corner, at 370 branch
at 580 branch at 1040 rs Valley Creek at 1090 rs
Valley Creek at 1900 rs set a Bore de Arc post on
Ridge marked C.C. 32 + M.C. 31

North on the 33rd mile at 1000 rs top of Bluff
of Red River at 1900 rs set a Bore de Arc
post in field marked on the South side 33
on the East C.C. on the West M.C. 32.

North on the 34th mile at 625 rs stake
for the N.W. corner of Cooke county and the

10
Cooke Co. Survey # 200
North East corner of Montague County on the
Bank of Red River from which a Cottonwood
marked M.C. X bears S $72\frac{1}{2}$ W 13 varas another
marked C.C. X bears S $6\frac{1}{2}$ E 12 varas.

We the undersigned specially appointed
by the Commissioners Court of Montague and
Cooke Counties respectfully, to define and
establish the line between the aforesaid
Counties, do hereby certify that the above and
foregoing field notes is a correct descrip-
tion of the line as established by us as
well as the natural and artificial
objects on said line. We also certify that
the posts set on said line are marked as
designated in the field notes.

Given under our hands this 15th day
of July 1885

A. G. Crowell

Special Surveyor for Montague Co

The above line was run at a bearing of 97° East

D. L. R. Butt

Special Surveyor for Cooke Co

B⁹

The State of Texas }
County of Cooke } A. J. Thompson
 } Co Secy of Cooke
 } Co Texas. hereby

certify that the foregoing Report
was on the 13th day of August 1885
and examined and approved
and entered of Record by the
Commissioners Court of Cooke
County Texas.

Witness my hand and Seal of
Office on this 19th day of Aug 1885.

A. J. Thompson
County Secy

By Geo W. W. Deputy

20

D. L. R. Beut
on ~~7~~ (50)
Western Boundary
Line of Cooke Co
Report & Field notes

No 31

West-B. Line

Filed Aug 10 " 1885.
A. J. Thompson
County Clerk

By Geo Womack
Deputy

Abstract corrected and
copy forwarded the
Compt^r of Pub. Accts
July 27/86

Reamant

These field notes are not correct
in regard to S.W. corner of Cooke
Co. that portion running from the
N.W. corner of Benton Co. North 1877
was then West 6 miles was taken
from Cooke Co, by the creation of
Wise County

B