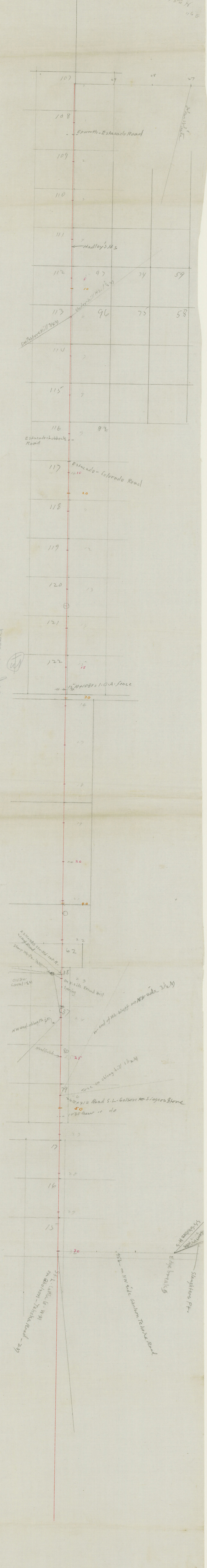


577  
1732 N  
116 E

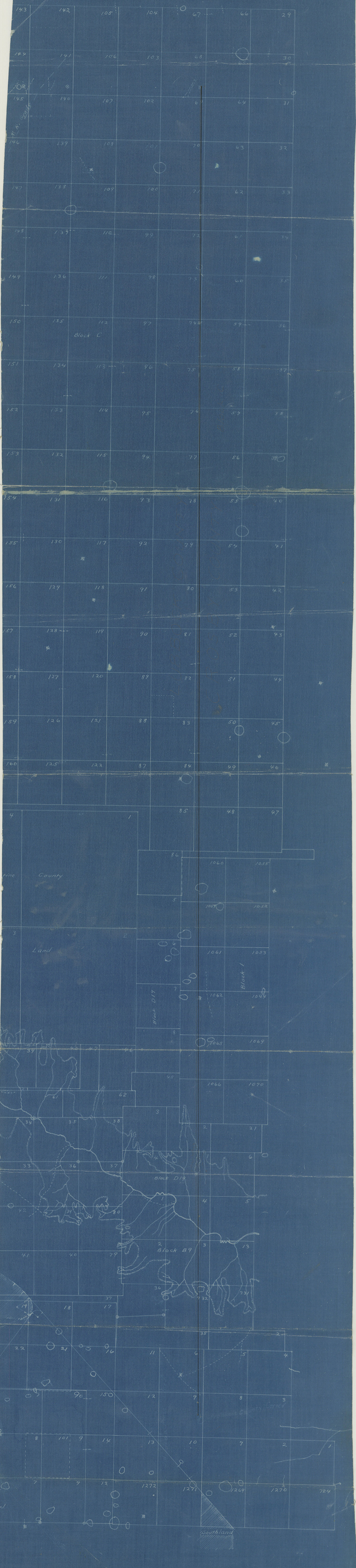


Cooper Co. Bath Tubs

Barren Point  
Slaughter's Point

was 17614210-4

7 362  
1361  
2 861



County 1900

Crosby Co. Bdry Line 2

counter 51999

10/12

# W. H. ORAND

COUNTY AND DISTRICT SURVEYOR  
CROSBY COUNTY, TEXAS

All Surveys Carefully Made  
Texas Land Boundaries a Specialty  
Patronage Solicited

104

Crosbyton, Texas, May 17, 1915.

Hob. J. T. Robison,

Austin, Texas,

Dear Sir:-

*Subbook*

I have received your complimentary map of ~~Dickens~~ Crosby County for which I thank you very much.

You ask for the exact location of the SE. and NE. corners of Crosby county as you are making a new map of Dickens county. According to my connections the NE. corner of Crosby county is a large hewn stone from whence the SW. corner of section No. 21, Matador Cattle Co., Blk. M. brs. S. 950 vrs. and W. 825 vrs. And the SE. corner of Crosby county is a hewn stone from which the NW. corner of section No. 72, H. & G. N. R. R. Co., Blk. No. 2 brs. S. 200 vrs. and W. 290 vrs.

When you get the Dickens county map completed I will thank you for a copy of it also.

Yours very respectfully,

*W. H. Orand*

RECEIVED

MAY 18 1915

Referred to Map

Crosby Co. Bk. File No. 5

# W. H. ORAND

COUNTY AND DISTRICT SURVEYOR  
CROSBY COUNTY, TEXAS

All Surveys Carefully Made  
Texas Land Boundaries a Specialty  
Patronage Solicited

Crosbyton, Texas, March 6, 1915.

RECEIVED

MAR 10 1915

Referred to Map

Hon. J. T. Roison,  
Austin, Texas,

Dear Sir:-

In answer to your favor of Feb. 3, I beg to enclose your sketch sent some time before. I regret over-looking this matter so long.

You will notice that I have shown by ink line the position of county line as recognized here and as disclosed by the late surveys of Mr. W. D. Twichel as State Surveyor. I compiled a map of Crosby County and copyrighted it. This is the position as shown on my map. And I was very careful to investigate all records obtainable.

I beg to call your attention to the fact that the Hon. Commissioners' Court of Lubbock County has had a recent survey made from Wilbarger (I believe) County, which places the E. and N. lines of Lubbock County considerably E. and N. respectively.

I understand that Lubbock County has brought suit against Hale County for a considerable strip about their common line.

I shall greatly appreciate your presentation of a Blue Print map of Lubbock County as you indicated.

Yours very respectfully,

W. H. Orand

P.S.- The reason that I delayed answering your request so long was:

I have had a great deal of surveying all winter and have never caught up with the work, tho I am about up, now.

W. H. O.