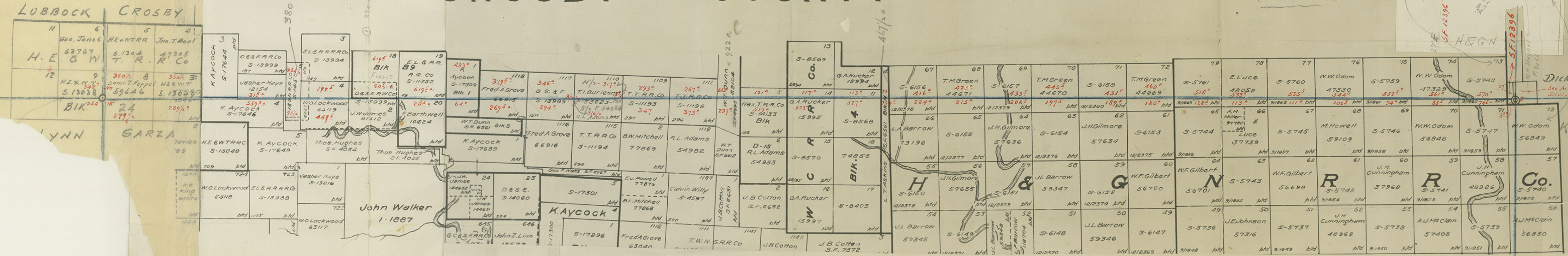


# CROSBY COUNTY

S.F. 12396, Abst. 1482, all Crosby Co.  
 W.H. Stagner shows 70 a. Crosby,  
 90 a. Dickens.  
 (Absts. Crosby, 1230; Dickens, 1047.)  
 (35<sup>3</sup> a. and 160 a.)



# GARZA COUNTY

County 52028

DICKENS  
 See Acres -  
 Division Sheet

KENT

Co.  
 S-5740

CROSBY - GARZA

(Photo. copies of corrected  
acreage division sheet mailed  
Assessors of Crosby and  
Garza Counties. 2/1/35.)

5

Crosby Co. Bldg.

40

585

1318

1900

153

183

736

309

427

CROSBY - GARZA - #1A

Abstracted in

Vol. 57.

2-6-1935

~~4~~

Mailed photo of this to A.L. Harris & Co. Assrs. of Crosby & Garza 2/1/35

ACREAGE DIVISION CROSBY - GARZA Boundary Line.

Sec.No.	Part	Blk.	Cert.	File No.	T. Ac.	Crosby Co. Abst.	Crosby Co. Ac.	Garza Co., Abst.	Garza Co., Ac.	
9	all	24	588	S13038	640	358 (Lynn Co.) 1388	20.2 <del>254.84</del>	822 1496	<sup>18</sup> <del>17.4</del> <del>347.95</del> 348.5	
8	all	24	587	59646	640	1189	360.8 <sup>5</sup>	939	279.4	
3	all	24	711	S13049	640	359	350.5	823	289.5 ✓	
4	Aycock			S17646	591.66	439	31.8		559.8 ✓	
5	I&GN		23/57	S.14157	380	409	284.5	453	95.5 ✓	
4	KL&RR	9	1149	63119	640		192.0 <sup>5</sup>	1039	447.4 <sup>5</sup>	
18	all	B-9	82	10213	640	466	619.6 <sup>5</sup>		20.4 <sup>5</sup>	
19	all	B-9	49	S11352	640	242	619.7 <sup>5</sup>	1205	20.3 <sup>5</sup>	
1	Aycock	1		S17309	547	428	483	900	64. ✓	
1118	B-S-F		1511	66915	649	1206	379.4 <sup>5</sup>	1010	269.8 <sup>5</sup>	
1117	B-S-F		1511	S-13989	640	376	346.2	1194	<del>295.8</del> 294	
1110	Durleson	R <sup>1</sup>	297	53623	320	1076	317	1067	3. ✓	
1110	Adams	S <sup>2</sup>	297	54984	320		3.0 <sup>5</sup>	827	316.4 <sup>5</sup>	
1109	TTRR	all	297	S-11193	640	319	<del>292.3</del> 293	1186	<del>346.3</del> 347	
1111	TTRR	all	296	S11192	640	317	267.2 <sup>5</sup>	1185	<del>372.0</del> 373	
3	Dunn	all	4	SF4695	82104	922	1318	684.8 <sup>5</sup>	1147	<del>327.8</del> 327
5	all	D-15	156	S14133	640	416	<del>120.9</del> 121	464	519.2	
14	all	4	28/94	15995	640		<del>116.8</del> 117	1084	523.2	
11	all	4	23/93	38568	640	192	<del>112.8</del> 113	1087	527.2	
4	Askins	H		SF6561	467 <sup>1</sup>	<del>1812</del> 1312	<del>394.4</del> 73	1145	<del>75.2</del> (Reverse) 394 <sup>1</sup>	
67	all	8	12/2378	S6156	640	113	416.		224. ✓	
68	all	8	12/2378	44671	640	973	<del>424.8</del> 425		215.2	
69	all	8	12/2379	S6157	640	114	433.5		206.5 ✓	
70	all	8	12/2379	44670	640	972	442.3 <sup>5</sup>		197.7 <sup>5</sup>	
71	all	8	12/2380	S6158	640	115	451		189 ✓	
72	all	8	12/2380	44669	640	971	460		180	
79	all	2	9/1863	S5761	646 <sup>1</sup>	74	518.2		128.4 <sup>5</sup>	
78	all	2	9/1862	<del>48052</del> S5760	646 <sup>1</sup>	1011	533.5	1036	113. ✓	
77	all	2	9/1862	S5760	646 <sup>1</sup>	73	538.3 <sup>5</sup>		111.2	
76	all	2	9/1861	47330	646 <sup>1</sup>	1052	544		102.5 ✓	
75	all	2	9/1861	S5759	646 <sup>1</sup>	72	552.5		94. ✓	
74	all	2	9/1860	47329	646 <sup>1</sup>	1031	561.2		85.2 <sup>5</sup>	
73	all	2	9/1860	S5748	646 <sup>1</sup>	71	<del>569.5</del> 570	808	76.7 <sup>5</sup>	
1	McArthur			SF12396	35.3	1482	27.2		8.2 <sup>3</sup>	
	W.H. Stagner	Pre-empt		9466	160	1230			13.3	

(See Dickens-Crosby Line for complete acreage division of Stagner survey.)

Crosby - 45?  
Dickens - 78  
Kent - 23

40

CROSBY - GARZA

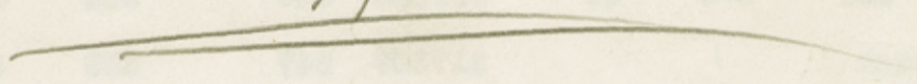
Abstracted in

Vol. 57.

2-6-1935



Mailed photostat of this to  
A. L. Harris, & Co. Assrs. of  
Crosby & Garza Counties  
2/1/35



County 52 032

1