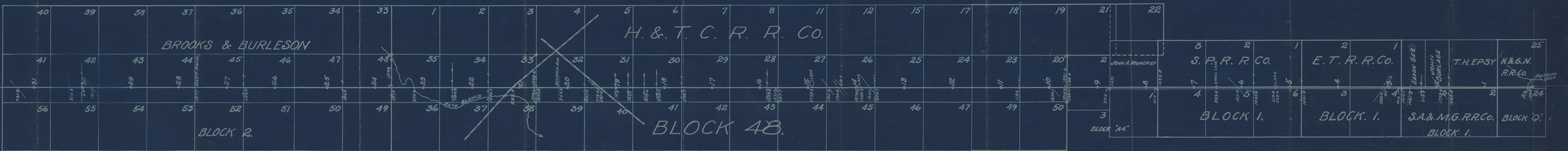




CAPITOL LEAGUES

WE, H. B. SPILLER, OF CANADIAN, TEXAS, AND A. H. DOUCETTE, OF PAMPA, TEXAS, SURVEYORS APPOINTED BY THE DISTRICT COURT OF HEMPHILL COUNTY, STATE OF TEXAS, DO HEREBY CERTIFY THAT THIS IS A TRUE AND CORRECT SKETCH SHOWING THE LINE BETWEEN DALLAM AND HARTLEY COUNTIES AS SURVEYED AND MARKED BY US ON THE GROUND, AS WELL AS THE RELATIVE POSITION OF SECTIONS AND SURVEYS CROSSED BY SAID LINE.

H. B. Spiller
A. H. Doucette



BROOKS & BURLESON

H. & T. C. R. R. CO.

BLOCK 2.

BLOCK 48.

BLOCK 1.

BLOCK 1.

BLOCK 1.

BLOCK 1.

Dallas Co. Tex. 4

Dallas - Hartley
Bourne 4

Filed January 7th 1909.
O.R. McMorris
Clerk
District Court
Hemp Hill County,
Texas.