

MINUTES OF COMMISSIONERS COURT

Now comes J. M. Strong Special Surveyor heretofore appointed to layout and mark the Boundary lines between Tarrant and Dallas Counties and submits his report as follows:

THE STATE OF TEXAS :

NOVEMBER 1890 : To the Honorable County Court of Dallas and Tarrant Counties we the Special surveyors appointed by your honorable Courts to mark and define as the law requires the boundary line between said Dallas and Tarrant Counties respectfully submit the following report.

Dallas County was created by law March the 30 A.D. 1846 having its initial or beginning point in in the South boundary line of Fannin County as said line existed at that time and three miles east of the intersection of said line with the east boundary line of Peters Colony and was constructed with its North and South lines parallel lines and its east & west lines longitudinal parallel lines. The North boundary line was subsequently modified by an act of the Legislature December the 1st AD 1849 (see Harleys Digest Art. 2294) The Special surveyor appointed under this Act to mark and define the Southern boundary line of Fannin County made the survey marked and defined the line made his report to the Commissioner of the General land office at Austin and it was adopted the line so run and defined is not a true east & west line but is N 89° 11" W from from the initial point of Dallas County though a legal line by the act of December the 1st 1849 above referred to.

Tarrant County was created by law December the 20th 1849 and is constructed upon the West line of Dallas County. The North west and south west corners of Dallas County being the North East and South east corners of Tarrant County hence the North West corner and the South West corner of Dallas County must first be established and the line connecting these two corners will be the correct legal boundary line between said Dallas & ~~Fannin~~ Tarrant Counties.

In pursuance of this theory we began at the initial point or corner of Dallas County as marked and defined by Warren A Farris in the year 1850 as appears of Record in Dallas County, which we consider the best and most reliable data for the location of the Northeast corner of Dallas County from this point we ran West following the old Fannin County line as defined

Dallas Co. Bdry. Line 6d

Counter 52229

41

and marked by Mr Orr the Special Surveyor under the act of December 1st 1849 and at the end of 56702 varas or 29 83/100 Miles N 89° 11' W from the beginning point we planted in the ground a bois d'arc post 8 inches squared three feet in the ground and four feet above ground for the North west corner of Dallas County.

From this point we ran South 57.825.5 varas to a point 30 miles South and 30 miles West from the initial point or the Northeast corner of Dallas County and established the Southwest corner of Dallas County and the Southeast corner of Tarrant County and planted in the ground a bois d'arc post 8 inches squared to designate said corner and marked in the east side S.W.C. D. C. and on the West side S. E. C. T. C.

From this last described corner we ran north to the North West corner of Dallas County and the Northeast corner of Tarrant County as First above described and herewith file Field Notes and plat of said line with the intersaction of surveys on said line as the law requires which we have marked as Exhibit "A" & "B" and make the m a part of this report.

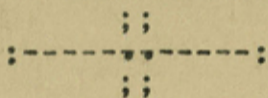
J. M. Strong

Special Surveyor for Dallas County

J. J. Goodfellow

Special Surveyor for Tarrant County

EXHIBIT "A" Field Notes of the line between Dallas & Tarrant County



We planted for the S W corner of Dallas County and the S E corner of Tarrant County a Bois d'arc post 8 inches square 3 feet in the ground and two and a half foot above the ground We marked said post on its West side S.E.C.T.C. and on its east side S.W. C. D.C. Said post stands at the foot of North side of a ridge and the S E edge of Mountain Creek Valley from which a Mesquite Tree 4 inches marked T.C.X. bears N 68° W 11 varas and a Mesquite ~~xxxx~~ 4 inches marked D.C.X. bears N 20½° E 36 varas and a mesquite 10 inches standing on a hill bears S 37¼° E 250½ varas and a mesquite 14 inches marked X on S side stand in a branch Valley North of a small branch bears North 73½ E 287½ varas Said corner post is 369 varas back from a small hole in the Topof a hill and 243½ varas South of said branch and 225 varas west of a bend in said branch and 305 varas West of a small drain that runs

Dallas Co. Bdry. Line 6d

45

into said branch from the South Said post is in the S line of F Houston survey 263 varas E of its S W corner.

THENCE North $243\frac{1}{2}$ Varas a small branch a prong of Mountain Creek at 1503 varas intersecting the North line of said Houston and the South line of G. W. Gresham surveys 35 varas west of the most southerly S E corner of 1st said Gresham and 268 varas East of the S W corner of the F. Houston Mile survey at 1540 varas the First Mile post in a small wet valley.

THENCE North at 419 varas center of Mountain Creek course south east following up the said creek and leaving at 709 varas its east bank intersecting the North line of said Gresham survey and the south line of ~~the~~ 2nd the C M Adams survey 237 varas west of the S E corner of said Adams Mile survey in all 1909 varas on the West bank of said creek the second mile post.

THENCE North at $22\frac{1}{2}$ varas a bend in said creek course Northeast at $433\frac{1}{2}$ varas past 5 varas West of a spring in west bed of Mountain creek run with the west edge of said creek about 40 varas intersecting the North line of said Adams and the south line of J A Curry's survey 229 varas west of their North east and southeast corners at $1124\frac{1}{2}$ varas intersecting the North line of said Curry and the south line of the G.A.F. Wash survey's at 223 varas west of their southeast and Northeast corner at ~~xx~~ $1511\frac{1}{2}$ varas intersecting the N W line of the J. S. Goodnight and S.E. line of the B. B. B. & C. R.R. Co's surveys 90 varas North 60° East from the Northwest corner of said Goodnight and 280 varas North 60° east from the 3rd Southwest corner of said R R survey in all $1902\frac{1}{2}$ varas to the third mile Mile post.

THENCE North at 1215 varas intersecting the northwest line of the B.B.B. & C. R.R. Co. to 485 varas south 60° West from its Northeast corner and 4th near the southwest corner of the W Lynn survey in all 1904 varas to mile Mile post 4 marked D.C.L. - T. C. L.

THENCE North intersecting the N W line of the W Lynn and the Southeast line of B Estis surveys 461 varas from their Northeast and South east corners intersecting the Northeast line of said Estis survey 109 varas South 30° East from its Northeast corner passing the Northwest corner

of the J. Childress and the southwest corner of the J. Banks surveys
5th in all 1903 $\frac{1}{2}$ varas to the fifth mile post marked 5 on South side and
Mile 6 on North side D. C.L. & T.C.L. on east & West sides.

THENCE North intersecting the Northwest line of said Banks and the
Southeast line of W. G. Webbs surveys at 418 varas North 60° east from
their North west and southwest corners at 429 $\frac{1}{2}$ varas west bank of Walnut
creek (creek 8 varas wide) course of creek North continuing down said
creek at 599 $\frac{1}{2}$ varas west bank of said creek course Northeast intersecting
the Northwest line of said Webb and the southeast line of the J Lee survey
137 varas from their north east and southeast corner in all 1919 $\frac{1}{2}$ varas
6th to the sixth mile post in a wet land mark 6 on South and 7 on North side X
Mile D.C.L.-T.C.L.

THENCE North intersecting the North east line of said Lee and the South
west line of H Brite surveys 238 varas North 30° West from the South east
corner of said Lee survey intersecting the Northeast of said Brite and the
South west line of J. W. Carter surveys 1663 varas North 30° West from
their Southeast and southwest corners at 1669 varas intersecting the south
7th line of the S.J. Brown survey 256 varas east of its S W corner in all X
Mile 1911 varas to the seventh mile post.

THENCE North at 1815 varas Fish Creek (course Northeast) at at 1851 varas
intersecting the North line of said Brown and the South line of the S H Beeman
8th survey 639 varas west of the South east corner of the said Beeman survey in
Mile all 1905 varas to the 8 mile post in North edge of Fish Creek Valley.

THENCE North at 921 varas intersecting the North line of said Beeman and t
the south line of M Hunt surveys 629 varas west of their North east and
Southeast corners at 1879 varas intersecting the north line of said hunt
and the South line of the C. D. Ball surveys 1276 varas east of the North
west corner of said Hunt and 1110 varas east of the S W corner of said
9th Ball surveys in all 1906 varas to the ninth mile post.

Mile
THENCE North at 338 varas North prong of Fish creek (course south east)
at 940 varas intersecting the North line of said Ball and the South line

of the G. M. Long surveys 963 varas west of their Northeast and South east corners at 1898 varas intersecting the North line of said Long and the South line of J. M. Gill survey 955 varas west of the Northeast 10th corner of said Long and 960 varas west of the southeast corner of Mile said Gill survey in all 1908 varas to the 10th Mile post.

THENCE North intersecting the north line of said Gill and the south line of W. Pruitt surveys 448 varas west of Gill's Northeast corner and 10 11th varas east of the S W corner of said Pruitt survey in all 1908 varas to Mile the 11th Mile post.

THENCE North at 967 varas a large branch (course East) intersecting the North line of said Pruitt and the south line of Tapley Holland survey 428 varas west of the North east corner of said Pruitt survey in all 12th 1909 varas to the 12th Mile Post.

Mile

THENCE North intersecting the South line of N C Mays survey 734 varas east of its Southwest corner intersecting the North line of said May 13th 734 varas west of its North west corner in all 1931 varas to the 13th Mile Mile post.

THENCE North at 556 varas center of T P R R track 474 varas West of Culvert No. 1043 at 1246 varas intersecting the North line of the T. Holland and the south line of the P. H. Ford survey 439 varas west of 14th the S E corner of said Ford survey in all 1900 varas to the 14th Mile Mile post.

THENCE North at 361 varas a pecan tree 24 inches near the head of a drain marked X on his South side intersecting the north line of said Ford and the south line of J. H. Ford surveys 431 varas west of their North east and southeast corners at 956½ varas intersecting the North line of said Ford and the south line of J. W. Farrans surveys 192 varas east of their southwest corners intersecting the North line of said Farrans and the south line of In & G R R surveys 766 varas west of their North east and southeast corners in all 1900 varas to the 15th mile post 15th marked on its south & north sides 15 and on its west side D.C.L. and on Mile its east side T.C.L

Dallas ca Bdry. Line 6d

45

THENCE North at $150\frac{1}{2}$ varas intersecting the North line of the In & G R.R. and the south line of the M Goodwins survey 766 varas west from 16th their North east and southeast corners at $1112\frac{1}{2}$ varas Trading House Mile Creek (course east) in all $1907\frac{1}{2}$ varas to the 16th Mile Post.

THENCE thence North at $142\frac{1}{2}$ varas intersecting the North line of said Goodwin and the south line of M Farrans surveys at 663 varas west of their North east and southeast corners intersecting the North line of said Farrans and the south line of the H. P. Crocker surveys 655 varas west of their North east and southeast corners at 1170 varas a large sand stone 10 feet in diameter at $1242\frac{1}{2}$ varas center of West fork Trinity River course east at $1262\frac{1}{2}$ North bank of River intersecting the North line of H P Crocker and the South line of the T Crocker surveys 648 varas west of the Northeast corner of H P Crocker and 543 varas west of the southeast corner of the T Crocker survey in all $1842\frac{1}{2}$ 17th varas to the 17th mile post marked 13 D.C.L. T.C.L.

Mile

THENCE North at $87\frac{1}{2}$ varas East Bank of West fork Trinity River course South west continuing up said Bank at $547\frac{1}{2}$ varas leaving the river to an old mill site intersecting the North line of the P Crocker and the south line of W. P. Crocker survey 533 varas west of their North east and South east corners at 1180 varas a large Branch course south west intersecting the North line of said Crocker and the South line of P. R. Splane surveys 525 varas west of the North east corner of said 18th Crocker survey in all $1907\frac{1}{2}$ varas to the 18th mile post marked 13 D C L Mile & T C L Said post being west of a Glade prairie.

THENCE North at $587\frac{1}{2}$ varas a stake on south edge of Glade prairie at $977\frac{1}{2}$ varas intersecting the North line of said Splane and the south line 19th of L D Burnett survey 421 varas west of the south east corner of said Mile Burnett survey in all $1907\frac{1}{2}$ varas to the 19th mile Post.

THENCE North intersecting ^g the North line of said Burnett and the South ^X line of the J J Goodman surveys 412 varas West of their north east and 20th southeast corners at 1625 varas Bear Creek course Southeast in all 1915 Mile varas to the 20th Mile post marked 10-20 D.C.L. & T C L. Post oak 14 inches X bears North 16° East 58 varas.

Dallas Co. Bdry. Line 6d

46

21st
Mile THENCE North at 62 varas intersecting ~~the~~ North line of said Goodman and the South line of the J. Thompson surveys 395 varas west of their Northeast and South east corners intersecting the North line of said Thompson and the South Line of the J. Simpson surveys 382 varas West of the North east corner of said Thompson and 336 varas west of the North east corner of said Simpson survey in all 1900 varas to the 21st mile post Bois d'arc Post marked 9-21 D.C.L. T.C.L.

22nd
Mile THENCE North intersecting the North line of said Simpson and the South line of P. Bacus surveys 322 varas west of their southeast and North east corners at 92 varas a small drain course west at 384 a drain course west intersecting the North line of the B. Bacus and the South line of P Brandenburg surveys west of their North east and South east corners in all 1904 varas to the 22nd mile Post marked 22 on the South side D C L on the east line and T.C.L. on the West side.

23rd
Mile THENCE at 100 varas intersecting the North line of said Brandenburg and the South line of P. Everand surveys 318 varas west of its south east corner at 1012 varas a drain course west intersecting the North line of said Everand Everand and the south line of G. Burgoon surveys 308 varas west of their North east and south east corner at 1201 varas a drain course south west in all 1912 varas to the 23rd Mile post marked on south side 23 on east side D C L and on West side T.C.L.

24th
Mile THENCE North at 200 varas intersecting the North line of Burgoon and the South line of H. Atkinson surveys 308 varas West of their North east and south east corners in all 1930 varas to the 24th mile post.

THENCE North at 870 varas intersecting the North line of said Atkinson and the south line of the R. H. Burnett surveys 276 varas west of the North east corner of said Atkinson and 426 varas west of the South east corner of said Burnett surveys at 1820.8 varas intersecting the North line of Burnett and the south line of W. Bruton Surveys 419 varas west of the North east corner of said Burnett and 269 varas west of the south east corner of said Burton surveys in all

25th 1900.8 varas to the 25th mile post on high prairie.

Mile

THENCE North at 1259.8 varas Center of the D. R. & P. R. R. Co. course North west in all 1900.8 varas to the 26th mile post a Bois d'arc 26th post marked on its south side 26 on its west side T.C.L. and on its Mile east side D.C.L.

THENCE North at 166 varas intersecting the North line of said Bruton and the south line of S C T Ford surveys 253 varas west of their North east and south east corners at 415 varas a Branch course North east intersecting the North line of said Ford and the south line of H. C. Hope survey at 1689 varas intersecting the North line of said Hope and the south line of W Russell surveys 319 varas West of the S E corner of said Russell survey in all 2150 varas to the 27th 27th mile post a Bois d'arc post marked on south side 27 on east Mile side D C L and on west side T.C. L.

THENCE North at 445 varas intersecting the north line of said Russell and the South line of the S. Thompson surveys 311 varas west of the North east corner of said Russell survey at 675 varas center of the St. L. A. & T. RY. course S W about 675 varas west of the 609th mile post in all 1900 varas to the 28th mile post a Bois d'arc post in 28th level prairie 6 inches square marked 28 on south side T.C.L. on west Mile side and D. C. L. on east side.

THENCE North at 26 varas intersecting the North line of said S Thompson and the South line of J. Gibson survey 230 varas west of the south east corner of said Gibson survey at 412 varas a large drain course Northeast at 621 again and again at 658 varas at 1000 varas a small drain course east in all 1900 varas to the 29th mile post a Bois d'arc 29th post in flat prairie marked 29 on south side T.C.L. on west side and Mile D. C. L. on east side.

THENCE North at 74 varas intersecting the North line of the said J. Gibson survey and the south line of another Gibson survey 200 varas west of their North and South east corners intersecting the North line of the said Gibson and the south line of the J.M. Baker surveys at

Dallas Co. Bdry. Line 6d

48

1275 varas to to a braw of Hill at the south edge of Bottom of Denton Creek at 1530 center of Denton creek at 1561 to a 6 inch Hackberry on North bank of Denton creek at 1678 a 10 inches Hackberry Blazed on 30th four sides in all 1900 varas to a post a Hackberry marked 30 bears Mile W $\frac{1}{2}^{\circ}$.

THENCE North $80\frac{1}{2}$ varas to the North east corner of Dallas County as herein constructed an 8 inch Bois d'arc post standing in the head of a small drain or draw course south from which an 8 inch P.O. marked C.T.C. bears S 19° E 9 varas and a P.O. 10 inch marked C T C bears 11° E $11\frac{1}{2}$ varas and a P.O. 8 inches marked N W C Dallas Co bears S $26\frac{1}{2}^{\circ}$ W 11 varas

EXHIBIT "B"

Map showing boundary line between Dallas and Tarrant County
Established October 1890

MAP ATTACHED

J. M. Strong

Special Surveyor for Dallas County

J. J. Goodfellow

Special Surveyor for Tarrant County

And the same having been examined is hereby accepted and adopted and ordered spread upon the minutes of this court as above.

Attest

S. B. Scott, Co. Clk

E. G. Bower, Co. Judge.

By J.E. Turner, Dy.

THE STATE OF TEXAS : I, W. S. Skiles, County Clerk, Dallas County, Texas, do hereby certify that the above and
COUNTY OF DALLAS : foregoing is a true and correct copy of Report of J. M. Strong, Special Surveyor, submitting his report of Boundary lines between Tarrant and Dallas Counties, as same appears of record in Volume 4, Pages 494, 495, 496, 497, 498, 499, 500, 501, 502, 503, and 504, Minutes of County and Commissioners Court of Dallas County, Texas.

Witness my hand and official seal of office,
this 29th day of July, A.D. 1919.

W. S. Skiles, County Clerk,
Dallas County, Texas.
BY W. M. Nelson Deputy

Dallas Co. Bdry. Line 6d

(49)

Mch Term : Tuesday Mch 9th, 1886.

It is ordered by the Court that J. M. Strong, Co. Surveyor be instructed to meet the Co. Surveyor of Tarrant County and such surveyors, if any, as may be appointed by the Commissioners Court of Ellis & Johnson Counties respectively on the 15th of March 1886 and act in conjunction with them in settling the S. E. corner of Tarrant County and the lines between the respective counties named, at the request of Comrs. Court of Tarrant County.

Attest:
W M C Hill, Co. Clerk ; E. G. Bower, Co. Judge.
By W. A. Hudson, Dy. :

THE STATE OF TEXAS ;
COUNTY OF DALLAS : I, W. S. Skiles, Clerk, County Court, Dallas County, Texas, do hereby certify that the above and foregoing is a true and correct copy of order of the County and commissioners Court as the same appears of record in Volume 3, Pages 332 and 333, Minutes of County and Commissioners Court of Dallas County, Texas.

Witness my hand and official seal of office, at Dallas, Texas, this 29th day of July, A.D. 1919.

W. S. Skiles, Clerk, County Court,
Dallas County, Texas.

BY Wm Nelson
Deputy

Dallas Co. Bdry. Line 6d

(50)

THE STATE OF TEXAS :

NOVEMBER 1890 : To the Honorable County Courts of Dallas and Tarrant Counties: We the Special Surveyor's appointed by your honorable courts to mark and define as the law requires the boundary line between said Dallas and Tarrant Counties respectfully submit the following report: Dallas County was created by law March the 30th A.D. 1846, having its initial or beginning point in the south boundary line of Fannin County as said line existed at that time and three miles East of the intersection of said line with the East boundary line of Peters Colony; and was constructed with its North and South lines parallel lines and its East and West lines longitudinal parallel lines. The North boundary line was subsequently modified by an act of the Legislature December the 1st A.D. 1849. (See Hartleys Digest Art 2294). The special surveyor appointed under this act to mark and define the Southern boundary line of Fannin County made the Survey, marked and defined the line, made his report to the Commissioner of the General Land Office at Austin and it was adopted. The line so run and defined is not a true east and west line, but is N 89° 11' W. from the initial point of Dallas County, though a legal line by the act of December the 1st 1849 above referred to. Tarrant County was created by law December the 20th 1849 and is constructed upon the West line of Dallas County. The North West and South West corners of Dallas County being the North East and South East corners of Tarrant County. Hence the North West corner and the South West corner of Dallas County must first be established and the line connecting these two corners will be the correct legal boundary line between said Dallas and Tarrant Counties: In persuance of this theory we began at the initial point or corner of Dallas County as marked and defined by Waren A Farris in the year 1850 as appears of record in Dallas County, which we consider the best and most reliable data for the location of the Northeast corner of Dallas County: From this point we ran west following the old Fannin County line as defined and marked by Mr Orr, the special surveyor under the act of December the 1st 1849, and at the end of 56.702 varas or 29 83/100 miles N 89° 11' W. from the beginning point, we planted in the ground a Bois d'arc post 8 inches squared three feet in the ground and four feet above ground for the North West corner of Dallas County. From this point we ran South 57.825.5 varas to a point 30 miles South and 30 miles West from the initial point or the North east corner of Dallas County and established

the South West corner of Dallas County and the south east corner of Tarrant County and planted in the ground a Bois d'arc post 8 inches squared to designate said corner and marked it on the East side S. W. C. D. C. and on the West side S. E. C. T. C. From this last described corner, we ran North to the North West corner of Dallas County and the North east corner of Tarrant County as first above described, and herewith file field notes and plat of said line with the intersection of surveys on said line as the law requires which we have marked as Exhibit "A & B" and make them a part of this report.

J. M. Strong

Special Surveyor for Dallas County

J. J. Goodfellow

Special Surveyor for Tarrant County

The within report adopted Nov. 22 A D 1890

W. A. Orr

Presiding

Filed Nov 22/90

S. B. Scott Clk

By J. E. Turner Dy

Filed for Record November 29th 1890 at 9² ock AM

S B Scott Co Clk

By T. B. Salmons Dy.

EXHIBIT (A)

Field notes of the line between Dallas and Tarrant County

We planted for the S. W. corner of Dallas County and the S. E. corner of Tarrant County a Bois d'arc post 8 inches square three feet in the ground and two and a half foot above the ground. We marked said post on its West side S. E. C. T. C. and on its East side S. W. C. D. C. said post stands at the foot of North side of a ridge and at the S. E. edge of Mountain Creek Valley from which a mesquite tree 4 inches marked T. C. X. bears N. 68° W. 11 varas and a Mesquite 4 inches marked D.C. X. bears N. 20 $\frac{1}{2}$ ° E 36 varas and a Mesquite 10 inches standing on a hill bears S. 37 $\frac{1}{2}$ ° E. 250 $\frac{3}{4}$ varas and a Mesquite 14 inches marked X on S. side stand in a Branch Valley North of a small branch bears North 73 $\frac{1}{2}$ ° E 287 $\frac{1}{2}$ varas. Said corner post is 369 varas back from a small hole in the top of a hill and 243 $\frac{1}{2}$ var. South of said branch and 225

52

Varas West of a bend in said branch and 305 varas West of a small drain, that runs into said branch from the South, Said post is in the S. line of F. Houston survey 263 vrs. E of its S. W. corner.

Thence

North $243\frac{1}{2}$ varas a small branch a prong of Mountain Creek at 1503 varas intersecting the North line of said Houston and the south line of G.W. Gresham surveys 35 varas West of the most southerly S. E. corner of said 1st Gresham and 268 varas East of the North west corner of the F. Houston Mile. Survey at 1540 varas the first mile post in a small wet valley.

(Thence

Thence North at 419 varas center of Mountain Creek 1 course South East following up the said creek and leaving at 709 varas its last bank intersecting the North line of said Gresham survey and the South line of the 2d C. M. Adams survey 237 varas west of the South east corner of said Adams Milesurvey in all 1909 varas on the west bank of said creek the second Mile Post

Thence

North at $22\frac{1}{2}$ varas a bend in said creek course North east at $433\frac{1}{2}$ varas passed 5 varas West of a spring in West bed of Mountain creek, run with the West edge of said creek about 40 varas intersecting the North line of said Adams and the South line of J. A. Currey's survey 229 varas West of their North east and South east corner at $1124\frac{1}{2}$ varas intersecting the North line of said Curry and the South line of the G. A. F. Wash surveys at 223 varas West of their south east and North east corner at $1511\frac{1}{2}$ varas intersecting the N. W. line of the J. S. Goodnight and South east line of the B. B. B. & C. R. R. Co's surveys 90 varas. North 60° East from the North west corner of said Goodnight and 280 varas North 60° east from the 3d South West corner of said R. R. survey in all $1902\frac{1}{2}$ varas to the third MilePost.

Thence

North at 1215 varas intersecting the North West line of the B. B. B. & C. R. R. Co. 485 varas South 60° West from the North east corner and near the South west corner of the W. Lynn survey in all 1904 varas to mile post

4th

Mile 4 marked 45 D C L--T.C.L.

Thence

North intersecting the N W Line of the W. Lynn and the South east line of B. Estis surveys 461 varas from their North east and South east corner intersecting the North east line of said Estis survey 109 varas South 30° east from its Northeast corner passing the North West corner of the J Childress and the South West Corner of the J. Banks surveys in all 5th 1903½ varas to the fifth mile post marked 5 on South side and 6 on Mile North side D. C. L. & T. C. L. on east and West sides.

Thence

North intersecting the North West line of said Banks and the South east line of ~~W.~~ W. G. Webb surveys at 418 varas North 60° East from their North West and South West corner, at 429½ varas West bank of Walnut creek (creek 8 varas wide") course of North ~~maintaining~~ continuing down said creek at 599½ varas West bank of said creek, course North east intersecting the North West line of said Webb and the Southeast line of the J. Lee survey 137 varas from their North east and Southeast corner in all 6th 1919½ varas to the sixth mile post in a wet land marked 6 on South and 7 on North Mile side D. C. L. T. C.L.

Thence

North intersecting the North east line of said Lee and the southwest line of H. Brite surveys 238 varas North 30° West from the south east corner of said Lee survey, intersecting the Northeast of said Brite and the South west line of J. W. Caster survey's 1663 varas North 30° West from their Southeast and Southwest corner at 1669 varas intersecting the South line 7th of the S. J. Brown survey 256 varas east of ~~the~~ its S. W. corner in all Mile 1911 varas to the seventh mile post.

Thence

North at 1815 varas Fish Creek (course Northeast) as at 1851 varas intersecting the North line of said Brown and the South line of the S. H. Beeman survey, 639 varas West of the South east corner of the said Beeman survey 8th in all 1905 varas to the eighth mile post, in North edge of Fish Creek Mile Valley.

(54)

Dallas Co. Bdry. Line 6d

Counter 52242

Thence

North at 921 varas intersecting the North line of said Beeman and the ~~south~~ south line of M. Hunt survey's 629 varas West of their North east and Southeast corner at 1879 varas intersecting the North line of said Hunt and the South line of the C. D. Ball survey's 1276 varas east of the 9th North West corner of said Hunt and 1110 varas east of the S.W. corner of Mile said Ball survey's in all 1906 varas to the Ninth Mile post.

Thence

North at 338 varas North prong of Fish creek (course Southeast) at 940 varas intersecting the North line of said Ball and the South line of the G. M. Long surveys 963 varas West of their Northeast and South east corners at 1898 varas intersecting the North line of said Long and the South line of J. M. Gill survey 955 varas West of the North east 10th corner of said Long and 960 varas West of the Southeast corner of said Mile Gill survey in all 1908 varas to the 10th mile post.

Thence

North intersecting the North line of said Gill and the South line of W. Pruitt survey's 448 varas West of Gills North east corner and 10 11th varas east of the S. W. corner of said Pruitt survey in all 1908 varas Mile to the 11th mile post.

Thence

North at 967 varas a large Branch (course east") intersecting the North line of said pruit and the South line of Tapley Holland survey 428 12th varas West of the Northeast corner of said pruit survey in all 1909 Mile varas to the 12th mile post.

Thence

North intersecting the South line of the N. C. May's survey 734 varas east of its South West corner intersecting the North line of said May 13th 734 varas West of its North West corner in all 1931 varas to the 13th Mile Mile post.

Thence

North at 556 varas center of T.P. R.R. Track 474 varas West of Culvert No 1043 at 1246 varas intersecting the North line of the T. Holland and the South line of the P. H. Ford survey 439 varas West of the S.E.

14th corner of said Ford survey in all 1900 varas to the 14th Mile post.

Mile

Thence

North at 361 varas a Pecan tree 24 inches near the head of a drain marked X on his South side intersecting the North line of said Ford and the South line of J. H. Ford survey's 431 varas ~~xxx~~ West of their North east and Southeast corner at 956½ varas intersecting the North line of said Ford and the South line of J. W. Farrans surveys 192 varas east of their Southwest corner intersecting the North line of said Farrans and the South line of In & G. R. R. surveys 766 varas West of their Northeast and Southeast corner in all 1900 varas to the 15th Mile Post marked on 15th its South and North side 15 and on its West side D.C.L. and on its east Mile side T.C.L.

Thence

North at 150½ varas intersecting the North Line of the In & G. R.R. and the South line of the M. Goodwin's survey 766 varas West from their 16th Northeast and Southeast corner at 1112½ varas Trading House Creek, Mile course east in all 1907½ varas to the 16th Mile post.

Thence

North at 142½ varas intersecting the North line of said Goodwin and the South line of M. Farrans survey's at 663 varas West of their North east and South east corner intersecting the North line of said Farrans and the South line of the H. P. Crocker survey's 655 varas West of their North east and Southeast corner at 1170 varas a large sand stone 10 feet in diameter at 1242½ varas center of West Fork Trinity River, course east at 1262½ North bank of River intersecting the north line of H. P. Crocker and the South line of the T. Crocker survey's 648 varas West of the North east corner of H. P. Crocker and 543 varas West of the 17th Southeast corner of the T. Crocker survey in all 1842½ varas to the 17th Mile Mile post, marked 13 D.C.L. T. C.L.

Thence

North at 87½ varas East Bank of West Fork Trinity River course South west continuing up said Bank at 547½ varas leaving the River to an old mill site intersecting the North line of the P. Crocker and the south

Dallas Co. Bdry. Line 6d.

(56)

line of W. P. Crooker survey 533 varas West of their North east and South east corners at 1180 varas a large branch course south West intersecting the North line of said Crooker and the South line of P.R. Splane survey's 525 varas West of the North east corner of said Crooker's 18th survey in all 1907 $\frac{1}{2}$ varas to the 18th mile post marked 13 D.C.L. & T. Mile C. L. said post being West of a Glade prairie.

Thence

North at 587 $\frac{1}{2}$ varas a stake on the South edge of glade prairie at 977 $\frac{1}{2}$ varas intersecting the North line of said Splane and the south 19th line of L.D. Burnett survey 421 varas West of the Southeast corner Mile of said Burnett survey in all 1907 $\frac{1}{2}$ varas to the 19th mile post.

Thence

North intersecting the North line of said Burnett and the south line of the J. J. Goodman surveys 412 varas West of their Northeast and Southeast corners at 1625 varas Bear Creek course south east in all 20th 1915 varas to the 20th mile post marked 1020 D. C. L. & T. C. L. Post Mile Oak 14 inches X bears North 16° East 58 varas.

Thence

North at 62 varas intersecting the North line of said Goodman and the South line of the J. Thompson surveys 395 varas West of their North east and South east corner intersecting the North line of said Thompson and the South line of the J. Simpson survey's 382 varas West of the North east corner of said Thompson and 336 varas West of the North east 21st corner of said Simpson survey in all 1900 varas to the 21st mile post Mile a bois d'arc Post marked 9.21 D. C. L. T. C.L.

Thence

North intersecting the North line of said Simpson and the South line of P. Bacus survey's 322 varas West of their south east and North east corner at 92 varas a small drain course West at 384 a drain course south west intersecting the North line of the P. Bacus and the South line of P. Brandenburg's 316 varas West of their North east and South east corner, in all 1904 varas to the 22d Mile post. Marked 22 on the south

Dallas Co. Bdry. Line 6d

57

22d side, D. C. L. on the east line and T. C. L. on the West side.

Mile

Thence

North at 100 varas intersecting the North line of said Brandenburg and the the south line of P. Everard survey's 318 varas West of its Southeast corner at 1012 varas a drain course West, intersecting the North line of said (Everard Everard and the South line of G. Burgoon surveys, 308 varas West of their North east and South east corner's at 1201

23d varas a drain course southwest in all 1912 varas to the 23d mile post,

Mile marked on south side 23 on East side D.C.L. and on West side T.C.L.

Thence

North at 200 varas intersecting the North line of said Burgoon and the 24th South line of H. Atkinson surveys 308 varas West of their Northeast and Southeast corners, in all 1930 varas to the 24th Mile Post.

Mile

Thence

North at 870 varas intersecting the North line of said Atkinson and the South line of the R. H. Burnett survey's 276 varas West of the Northeast corner of said Atkinson and 426 varas West of the Southeast corner of said Burnett surveys at 1820.8 varas intersecting the north line of Burnett and the south line of W. Bruton surveys 419 varas west of the Northeast corner of said Burnett and 269 varas West of the south

25th east corner of said Bruton survey's in all 1900.8 varas to the 25th Mile mile post on high prairie.

Thence

North at 1259.8 varas center of the D. A. & P. R.R. Co. course North west in all 1900.8 varas to the 26th mile post, a Bois d'arc post

26th marked on its South side 26 on its West side T.C. L. and on its east Mile side D.C.L.

Thence North at 166 varas intersecting the North line of said Bruton and the South line of the S. C. T Ford survey's 253 varas West of their Northeast and southeast corners, at 415 varas a Branch course Northeast intersecting the (North North line of said Ford and the south line of H. C. Hope survey at 1689 varas intersecting the North line of said Hope and the south line of W. Russell survey's 319 varas west of

Dallas Co. Bdry. Line 6d

(58)

the S. E. Corner of said Russell survey in all 2150 varas to the
27th^{27th} Mile Post, a Bois d'arc post marked on south side 27 on east side
Mile D. C. L. and on West side T.C.L.

Thence North at 445 varas intersecting the North line of said Russell
and the South line of the S. Thompson surveys 311 varas West of the
North east corner of said Russell survey at 675 varas center of the
St L. A. & T. Ry. course S. W. about 675 varas West of the 609th
Mile post in all 1900 varas to the 28th Mile post, a Bois d'arc post
28th in leosl prairie 6 inches square marked 28 on south side T.C.L. on
Mile West side and D. C. L. on east side.

Thence North at 26 varas intersecting the North line of said S. Thompson
and the south line of J. Gibson survey's 230 varas West of the Southeast
corner of said Gibson survey at 412 varas a large drain course North
east at 621 again and again at 558 varas at 1000 varas a small drain
course east in all 1900 varas to the 29th mile post a bois d'arc post
29th in a flat prairie marked 29 on South side T. C. L. on West side and
Mile D. C. L. on east side.

Thence North at 74 varas intersecting the North line of the said J.
Gibson survey and the south line of an other Gibson survey 200 varas
West of their north and south east corners intersecting the North line
of the said Gibson and the south line of the J. M. Baker survey at
1275 varas (to)

to a brow of Hill at the south edge of bottom of Denton Creek at 1530
center of Denton creek at 1561 to a 6 inches Hackberry on North bank
30th of Denton Creek at 1678 a 10 inches Hackberry blazed on four sides in
Mile all 1900 varas to a post, a hackberry marked 30 bears W. $\frac{1}{2}^{\circ}$.

Thence. North $80\frac{1}{2}$ varas to the Northeast corner of Dallas County as
herein constructed, an 8 inch Bois D'arc post standing in the head of a
small drain or draw course South from which an 8 inch P.O. marked C.T.C.
bears S. 19° E. 9 varas and a P.O. 10 inch marked C.T.C. bears S. 11°
E. $11\frac{1}{2}$ varas and a P.O. 8 inches marked N.W.C. Dallas Co. bears S. $26\frac{1}{2}^{\circ}$
W. 11 varas.

Filed for Record November 29th 1890 at 9 ock A.M.

S. B. Scott Co Clk

Dallas co. Bdry. Line 6d

(59)

Dallas Co. Bdry. File # 64

22

W. A. Koo & Co. 1000 N. W. 10th St. Dallas, Tex.

... Dallas Co. Bdry. ...

... Dallas Co. Bdry. ...

Dallas Co. Bdry. line

18 (9)

Counter 52248

---10---

By T. B. Salmons Dy

Recorded December 3rd 1890 S. B. Scott Clk

By J. E. Turner Dy

THE STATE OF TEXAS :

COUNTY OF DALLAS : I, W. S. Skiles, County Clerk, Dallas County, Texas, do hereby certify that the above and foregoing is a true and correct copy of Report of Special Surveyors appointed by Dallas and Tarrant counties with respect to Boundary line between said counties, as of record in Volume 138 Pages 376, 377, 378, 379, 380, 381, 382, 383, 384, 385, 386, Deed Records of Dallas County, Texas.

Given under my hand and official seal at Dallas, Texas, this 28th, day of July A. D. 1919.

W. S. Skiles, County Clerk,

Dallas County, Texas.

By Am Nelson

Deputy

(60)

Dallas Co. Bdry Line 6d

Counter 52249

THE STATE OF TEXAS :

COUNTY OF DALLAS :

I, W. S. Skiles, County Clerk, Dallas County Texas, do hereby certify that the attached map is a true and correct copy of boundary line between Dallas and Tarrant County, established October 1890, as same appears of record in Volume 138, Pages 388 and 389, Deed Records, Dallas County, Texas.

Given under my hand and seal of office at Dallas, Texas, this 28th, day of July, A.D. 1919.

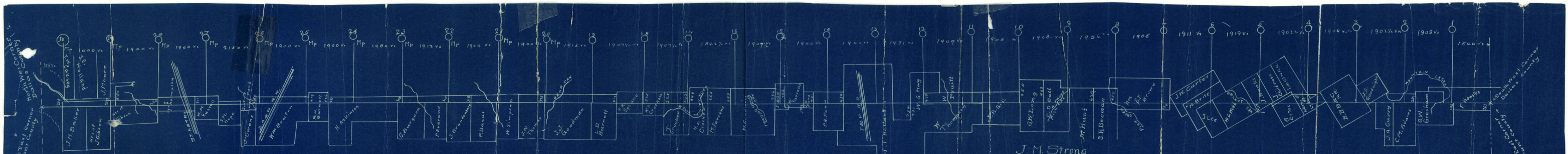
W. S. Skiles, County Clerk

Dallas County, Texas.

BY A. M. Nelson

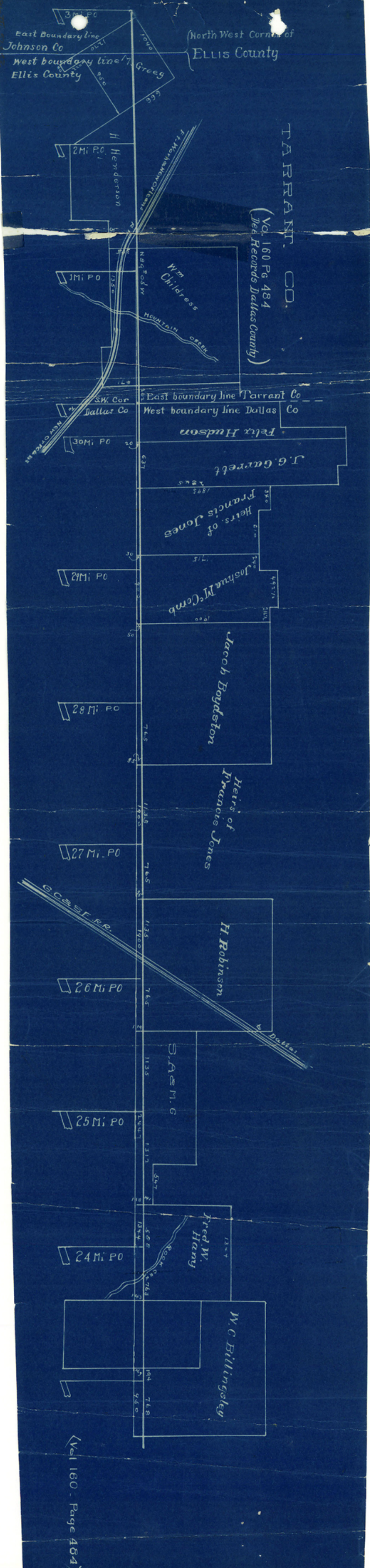
DEPUTY

(61)
Dallas Co. Bdry Line 6d



Map showing boundary lines between Dallas and Tarrant County
 Established October 1890.
 {Vol. 138 page 388, Deed Record} Dallas County
 Scale 2000 Feet = 1"

J. M. Strong
 Special surveyor for Dallas County
 J. J. Goodfellow,
 Special surveyor for Tarrant County
 Filed for record November 29th 1900 at 9 1/2 o'clock A.M.
 S. B. Scott Co Clerk By T. B. Salmons Deputy



North West Corner of
ELLIS County

TARRANT CO.

(Vol. 160 Pg. 484
Dec. Records Dallas County)

East Boundary line
Johnson Co
West boundary line
Ellis County

3 Mi. P.O.
H. Henderson

2 Mi. P.O.
Wm Childress

1 Mi. P.O.
Felix Hudson

30 Mi. P.O.
J. G. Garrett

29 Mi. P.O.
Heirs of Francis Jones

28 Mi. P.O.
Joshua McComb

27 Mi. P.O.
Jacob Boydston

26 Mi. P.O.
Heirs of Francis Jones

25 Mi. P.O.
H. Robinson

24 Mi. P.O.
S.A.M.G.

Rock Cr.
Fred W. Hany

W.C. Billingsley

Vol 160 - Page 484

78

Dallas Co. Bdry

Dallas-Tarrant-Ellis

Counter 52253

X

X

8

Dallas Co. Bdry line

6a