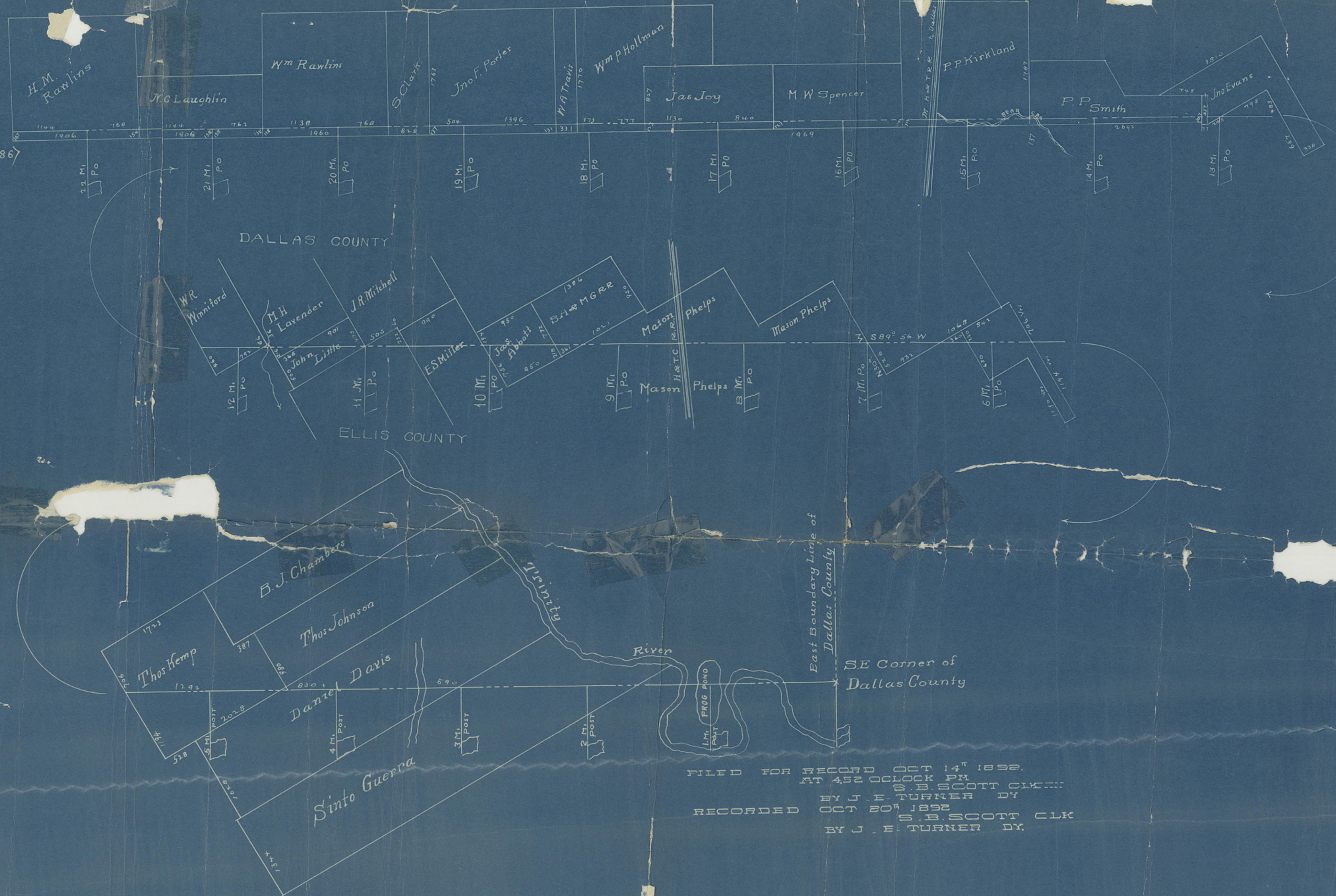


<Vol 160 p 486>



FILED FOR RECORD OCT 14th 1892.
 AT 4:52 O'CLOCK PM
 BY S. B. SCOTT CLK
 BY J. E. TURNER DY
 RECORDED OCT 20th 1892
 BY S. B. SCOTT CLK
 BY J. E. TURNER DY.

6e/ 73 (12b) 10-4-1892

Dallas Co. Bdry. line

Boundary Line of Dallas: The State of Texas, :
& Ellis Counties.... : County of Dallas :
Dallas, Texas, July 27th, A D 1892.

To the Honorable Courts of Dallas and Ellis Counties, We the Special Surveyors appointed by your Honorable Courts to run marks and define, as the law requires, the boundary line between Dallas and Ellis Counties respectfully submit the following report:-

Having appeared to us that the N. W. Cor. of Ellis County, being entirely indeffinite we called a conference of the Special Surveyors of Dallas, Ellis and Tarrant Counties to meet in Dallas, the 7th day of June, 1892, in the office of the County Clerk of Dallas County, for the purpose of agreeing upon a deffinate place to begin the Survey. And it having been agreed between us at said conference that we would re-establish the line run by W. A. Ferris in 1850, which was in conformity to instructions from the General Land Commission of the General Land Office of the State of Texas, a certified copy of which is hereto attached. And in obedience to the order of your Honorable Courts, on the 14th day of June 1892, at 11 o'clock A. M., we met at a point in Red Oak bottom supposed to be the 23 mile post on the original Ferris line, which meeting was agreed upon at our conference heretofore alluded to. After running several random lines we succeeded in locating approximately the original S. W. cor. of Dallas County, as was established by W. A. Ferris. From the S.W. cor of Dallas Co. we ran a random line east and found marked timber on entering the Trinity River bottom, but not being able to find any of the witness trees called for by Ferris we we unable to determine with degree of certainty the true boundary line, we continued our course east, crossing the Trinity River where we found a frog pond of great extent accurately described by Ferris. We found Ash trees in the frog pond plainly marked but did not find any of the bearings called for in his report. We continued our course east of the ~~w~~ west bank of Trinity River the same being center Trinity, and we believe and agreed from the distance given in the Ferris field notes and the topography of the country at this point, that we had found the true Ferris line. The distance called for in the Ferris field notes from the W. bank of the centre crossing of the Trinity river to the east bank of west crossing of same is 511 vrs, the distance as measured by us is 565 vrs, being an excess

of 54 vrs, owing to the topography of the river a line North or south of the line as adopted by us for the Ferris line would make the distance across the bend of the river far in excess of either of the above measurements, as will be seen by accompanying plat. We began our measurements on the west bank of Center Trinity river which is 231 vrs N 89° 51 East from first mile post tracing west from the S E cor of Dallas County, from which point a point 18 5/10 vrs, North, an Elm 18 in brs, N 26° 45 W 9 1/10 vrs marked D. Elm 18 in brs N 35° W 7 8/10 vrs marked A. K. Y. and an Ash brs S 81° 35 W 7 5/10 vrs, and a point of the East bank of river brs N 55° 15 E, another point of river brs S 45 E Thence S 89° 51 W 172 vrs, an Ash marked Y D C on N side and K.E.C. on S side said Ash also has the old Ferris marks upon it, Thence S 89° 51 W 231 vrs first mile post standing in frog pond as described by Ferris, Thence S 89° 51 W at 334 vrs, Trinity river, 377 vrs W bank of said river, Also the N E cor, of Ellis County a bois dare post 8 in square marked marked on N side D C L and on the S side N E cor N E from said post an Elm 30 in brs N 88° 30 W 32 8/10 vrs, marked K Y and an Ash 30 in brs N 72° 35 W 19 3/10 vrs, marked K Y at 1626 8/10 vrs a Boisdarc post, from which an Elm 8 in brs N 88° 30 E 35 9/10 vrs marked D C L on W side and Y K on E side, also an Elm 14 in brs N 16° 45 E 7 vrs, marked K Y, also an Ash 18 in brs S 22° 30 E 13 9/10 vrs, marked K Y at 1900 8/10 vrs, Second mile post, at 1900 8/10 vrs, 3 mile post marked D C L on N side and E. C. L. on S side on S side 111 M, from said post an Elm 24 in brs N 46° 05 W, 4 3/10 vrs marked X D C L, another 12 in brs S 70° 30 E 12 6/10 vrs marked X E. C. L., and an Ash 18 in brs S 29° 30 W 21 4/10 vrs marked X E. C. L., at 590 vrs, 10 mile creek, 1900 8/10 vrs, 4th Mile post, a Boisdarc post marked D. C. L. on N side and E. C. L. on S side, from said post an Elm 12 in brs, S 97° W 15 5/10 vrs, marked X E. C. L., another 8 in brs N 58° 40 W 13 7/10 vrs, marked D. C. L. X, another 12 in brs S 11 W. W. 15 8/10 vrs, marked X E. C. L. at 830 vrs, N W line of Daniel Davis Survey, 1509 vrs, N 60° E from his N W corner and 81 vrs S 60 W from S. E. cor. of Thomas Kemp survey 967 vrs an Elm marked D C E at 1253 vrs, prairie at 1668 8/10 vrs, 4 vrs S of A Hackberry with Ferris Marks upon it at 1900 8/10 vrs. 5th Mile post, a boisdarc post 8 in square standing at foot of High Hill

(63)

marked D. C. L. on N side and E. C. L. on S side 5 M on W side XXV. Thence S $89^{\circ} 56' W$ at 56 $\frac{7}{10}$ vrs, small timbered branch course N and S at 191 vrs a point from which an Elm 15 in brs S $7^{\circ} 30' E$ 238 vrs marked X C. E. said tree is 4 vrs S of line run - J.M. Strong and others, also an Elm 12 in brs N $3^{\circ} 50' W$ 141 $\frac{8}{10}$ vrs, marked X K. Y., said point is in Cotton field on western slope of hill about 10 vrs W of **sumit**, at 622 vrs timber, at 690 vrs, centre of branch, at 753 vrs, center of branch at 774 vrs, center of branch at 797 vrs, center of branch at 828 vrs, center of branch at 996, center of small drain, at 1295 vrs, the west line of the Thomas Kemp survey, and 1194 vrs, N $30' W$ from his S E cor, 1900 $\frac{8}{10}$ vrs, 6th Mile Post, on Eastern Slope of hill about 88 vrs W of a little ravine, between two hills, and about 140 vrs E of **sumit**, at 396 vrs branch at 799 vrs, road N & S at 1414 vrs, Creek at 1867 vrs, E line of Mason Phelps Survey 526 vrs, N $30' W$ from the S E cor of said Phelps survey this cor being also the S W cor of the Thomas Menifee Survey, 1900 $\frac{8}{10}$ vrs 7th Mile Post standing on W slope of hill, about half way from foot to **sumit**, marked E. C. L. on S side and D. C. L. on N side, on W side XXIII, on E side 7 M from which an Elm 12 in brs S $45^{\circ} 05' W$ 130 $\frac{4}{10}$ vrs, marked X E. C. and a china 10 in brs S $40' 10' W$ 136 $\frac{7}{10}$ vrs, marked X E at 104 vrs, ravine 411 vrs, ravine 1032 vrs ravine at 1900 $\frac{8}{10}$ vrs, the 8th mile post, standing between two hills on eastern slope of **Will** about half way between two branches running in different directions, one coming down on N side of E Hill and the other on the S side of W hill, from which two lone cottonwoods 18 in 1 brs S $20^{\circ} 25' W$, 406 vrs, the other brs S $19^{\circ} 30' W$ 426 $\frac{4}{10}$ vrs, and a point of a thicket on western slope of E hill brs, S $52' E$ about 150 vrs at 828 vrs H & T C R. R. course about N & S 5 vrs N of Trestle, another trestle 177 $\frac{8}{10}$ vrs N, another 264 $\frac{9}{10}$ vrs S at 1900 $\frac{8}{10}$ vrs, 9th mile post, at about 1013 vrs an Elm 8 in brs S $5^{\circ} 05' E$ 103 $\frac{8}{10}$ vrs, marked K Y X another 24 in brs N $77^{\circ} 30' W$ 190 $\frac{2}{10}$ vrs marked X D. C. 1180 vrs, ravine, 1802 vrs branch at 1900 $\frac{8}{10}$ vrs, 10th mile post on eastern slope of hill, from which a double elm 5 & 9 in brs S $63^{\circ} 40' E$ 84 $\frac{4}{10}$ vrs Marked X E. C., and a walnut 3 in brs S $75^{\circ} 25' W$ 97 $\frac{5}{10}$ vrs marked X K. Y. D. C. L, at 95 vrs, the E line of E S Miller's Survey, 826 vrs, S $30^{\circ} E$ from his N E cor, at about 568 vrs, a point on top

(64)

of high hill, an Elm ten in brs S 1° W 87 vrs, marked K Y at 1792 vrs, the N W line of Rial Morgan's Survey, 505 vrs, S 60° W from his N E cor at 1900 8/10 vrs. 11th Mile Post, at 1900 8/10 vrs. 12th Mile Post, standing in a large field, marked D. C. L. on N side E. C. L. on S side at 1035 vrs, Spring branch course N & S at 1900 8/10 vrs, 13th Mile Post, which stands 10 vrs W of the N W line of WM Winniford Survey, S 60° W 768 vrs, from his N E cor, at 1900 8/10 vrs, 14th Mile Post, in prairie glade from which a little crooked Elm 6 in brs S 0° 30 E 97 vrs, marked X K. Y. and well of good water brs, S 32° W 77 4/10 vrs, and a chittam 7 in brs, marked X K.Y. at 853 vrs Bear Creek course east about 20 vrs N of Wild Cat Island, at 1070 vrs, E line of P.P. Kirkland survey, and W line of P P Smith's Survey, 113 vrs, N from S W cor of said survey, 1240 vrs, centre of Bear Creek, 1748 vrs, a point 83 vrs N of said Creek and 12 vrs N of the widow Kirkland house, at 1900 8/10 vrs, 15th Mile Post 14 vrs of the N bank of Bear Creek, from said post a large Walnut 30 in. brs S 87° 30 E 145 8/10 vrs marked X K. Y. and the mouth of a ~~xxx~~ small branch running into Bear Creek from the South, brs S 37° W 40 vrs and another coming in from the South brs S 38° 15 E 143 vrs, and a small Airoya running into creek, from the South brs S 8° E 70 8/10 vrs at 125 vrs, Bear Creek, at 320 vrs a point 30 vrs N of said Creek, 390 vrs said Creek, 513 $\frac{1}{2}$ vrs, the M K & T R. R. 10 $\frac{1}{2}$ vrs, S of the S end of trestle No. 1823, across Bear Creek, and 49 vrs S of the centre of Bear Creek, at 991 vrs, the W line of P P Kirkland's survey, 114 vrs, N from the S W cor of said survey at 1900 8/10 vrs, 16th Mile Post marked D. C. L. on N side and E. C. L. on S side, at 1900 8/10 vrs, 17th Mile Post marked D. C. L. on N side and E. C. L. on S side, at 215 vrs, a branch 225 vrs, two lone Elms about 10 vrs apart (1) 6 vrs N of line and the other 4 vrs, S of line, 1133 vrs, an old hedge, the W line of James Joy Survey, 123 vrs N of his S W cor, at 1900 8/10 vrs, 18th Mile Post 1795 vrs, Spring branch N & S 1900 8/10 vrs, 19th Mile Post, from which an Elm 18 in brs, N 81° 55 E 72 4/10 vrs, marked X K.Y. and a Pecan 20 in brs, S 23° E, 107 9/10 vrs, marked X E. C. at 1320 vrs, branch 1133 vrs, the West line of S Clark's Survey, 137 vrs N of his S W cor at 1900 8/10 vrs. 20th Mile Post, makred D. C. L. on N side and

E. C. L. on S side, 145 vrs, branch, 1079 vrs, little creek, at 1150 vrs the east line of N C Laughlin Survey, 135 vrs, N of the S E cor of said survey, at 1900 8/10 vrs, 21st Mile Post, marked D. C. L. on N side and E. C. L. on S side at 1144 vrs, E line of H M Rawlins survey 144 vrs, N of his S E cor at 1900 8/10 vrs, 22nd Mile Post, 8 in square marked D. C. L. on N side and E. C. L. on S side 960 vrs, branch at 1900 8/10 vrs, 23rd Mile Post, on prairie ridge, from which an Elm on west bank of spring branch brs, S 72° W 308 6/10 vrs, marked X and an Elm standing on East bank of said branch, 289 8/10 vrs, W and about 2 vrs S of line marked X E. C. at 194 vrs, the east line of W C Billingsley survey, 169 vrs, N of its S E corner at 290 vrs, branch 1434 vrs, E bank of Red Oak Creek course east at 1520 vrs, W bank of said Creek 1560 vrs, the mouth of a small airoya, running into Red Oak Creek, about 10 vrs N of line, Thence up the S side of said airoya crosses it at 1700 vrs, about its head, at 1900 8/10 vrs, 24th Mile Post, on the edge of a high bluff of the bottom of Red Oak Creek about 40 vrs E of the edge of prairie glade jetting down into the forks of Red Oak Creek, from which a spotted Oak 30 in brs, S 65 E 5 vrs marked X K.Y.E.C., and another 12 in brs N 35° W 15 4/10 vrs Marked X K Y D C, and another 12 in brs N 43° 15 W 27 6/10 vrs marked X at 588 vrs, the west line of Fred Handy's survey, 118 vrs N of his S W cor at 1240 vrs, the head of a small timbered branch, at 1900 8/10 vrs, 25th mile post, from which the head of a small timbered branch brs S 12° W 297 vrs, and a small grove of Hackberries, and Chittums brs, S 77° 45 W 372 vrs, and the N E cor, of the G C and S F R.R. depot in the City of Cedar Hill, brs N 12° W about 4 miles at 1135 vrs, the west line of the S A and M G R.R. survey, 119 vrs, N of its S W cor at 1900 8/10 vrs, 26th mile post, on top of a ridge between two draws, from which two lone Hackberries 12 in brs, N 56° 15 E 360 vrs, marked X K Y and a well of good water in valley on the S Baggett place brs, S 53° 15 W 562 8/10 vrs at 236 vrs. the G. C. & S. F. R. R. at 1135 vrs, the W line of Hugh Robinson survey, and 95 vrs N of his S W cor at 1900 8/10 vrs, 27th Mile Post on western slope of the hill, from this point, the cross timbers are in full view ranging N & S and Commanche Peak brs S 79° W about 40 miles, at 1053 vrs

timbered branch, at 1900 8/10 vrs, 28th mile post, standing about 33 vrs, N of branch from which a forked Elm 14 in brs N 43° 50 E 90 2/10 vrs marked X D. C. and a cluster of three Elms about 14 in brs S 15° 05 W 43 6/10 vrs, marked X K Y, also two Elms 14 in one forked standing on south side of branch, brs S 61° 15 W 89 vrs, marked X E. C., 1135 vrs, the west line of Jacob Boydston survey 60 vrs N of his S W cor, 1856 vrs a branch at 1900 8/10 vrs, 29th mile post marked D. C. L. on N side and E. C. L. on the South side, at 185 vrs J McComb's west line, 40 vrs N of his S W cor. at 1135 vrs, the west line of the Hrs. of Francis Jones survey, 30 vrs N of his S W cor at 1792 vrs, the West line of J G Garrett survey, 20 vrs N of his S W cor. at 1900 8/10 vrs, 30th Mile post, at 440 vrs 2 vrs South of the S W cor of Dallas County as located by J M Strong and J J Goodfellow, special surveyors for Dallas and Tarrant Counties, Oct 8th, 1890, said corner being a boisdarc post 8 in square marked on W side S E T Co. and E side S W C D. Co. standing in edge of valley of branch at E edge of mountain creek valley, from which a four inch Mesquite marked T C and X brs N 68° W 11 vrs, and a Mesquite 4 in marked D. C. X. brs N 20° 30 E 26 vrs, and a Mesquite 10 in standing on a Hill brs S 37° 15 E 250 3/4 vrs, and a Mesquite 14 in marked X on S side, standing in valley of small branch, brs N 73° 30 E 287 5/10 vrs, and a bend of branch, brs, E 235 vrs, (surface measurements).
line ~~marked~~ marks 5 hacks - Variation 8⁶ 25' East.

D. Smith, : Jno. M. Young,
: CC Jno. D. Kennard, Special Surveyors for
J. V. Dinner : Dallas & Ellis Counties.

We, Jno. M. Young and Jno. D. Kennard, special surveyors for Dallas and Ellis Counties, appointed by the Honorable County Courts of said counties, to make a re-survey of the line between Dallas and Ellis Counties, do hereby certify that the foregoing field notes gives a full, true and correct description of the survey as made by us upon the ground. This the 30th day of July, A D 1892.

Jno. M Young, Special Surveyor for Dallas County.

Jno. D. Kennard, Special Surveyor for Ellis County.

Filed for record Oct 14" 1892, at 4 52 o clock P M, S. B. Scott, Co.

Clerk, By J. E. Turner, Dy.

(67)

Recorded Oct. 19" 1892, S. B. Scott, Co. Clerk, By A. S. Jackson, Dy.

^ ^ ^ ^ ^

The State of Texas, :

County of Dallas :

I, W. S. Skiles, County Clerk in and for said county, State of Texas, do hereby certify that the above and foregoing is a true and correct copy of Boundary Line of Dallas & Ellis Counties, as the same appears of record in Vol. 160, page 476, et seq., Deed Records of Dallas County, Texas.

Witness my hand and official seal of office, this the 28th day of July, A D 1919.

W. S. Skiles, County Clerk, Dallas County, Texas.

By *W. M. Nelson* Deputy.

^ ^ ^ ^ ^

(67) (68)

The State of Texas, :

County of Dallas :

I, W. S. Skiles, County Clerk in and for Dallas County, State of Texas, do hereby certify that the above and foregoing is a true and correct copy of plat showing boundary line of Dallas and Ellis Counties, as the same appears of file in Vol 160, pages 484-5-6-7-8 & 9, Deed Records of Dallas County, Texas, and being the same boundary lines described on pages 477 to 483 inclusive, of Vol. 160.

Witness my hand and official seal of office, this the 28th day of July, A D 1919.

W. S. Skiles, County Clerk, Dallas County, Texas.

By *A. M. Nelson* Deputy.

(68) (69)

And now comes J. M. Young and John D. Kennard Special Surveyors appointed by Dallas and Ellis Counties respectively and submit their report of the surveying and marking of the boundary line between said Counties which reads as shown below and said report together with the accompanying plat is hereby adopted and ordered spread upon the minutes of this Court;

Dallas Texas July 27 A.D. 1892.

THE STATE OF TEXAS : TO THE HONORABLE Courts of Dallas and Ellis COUNTY OF DALLAS : Counties, we the special surveyors appointed by your Honorable courts to run mark and define, as the law requires the boundary line between Dallas and Ellis Counties respectfully submit the following report:- It having appeared to us that the N W corner of Ellis County being entirely indefinite we called a conference of the special surveyors of Dallas, Ellis and Tarrant Counties to meet in Dallas the 7th day of June 1892 in the office of the County Clerk of Dallas County for the purpose of agreeing upon a definite place to begin the survey and it having been agreed between us at said conference that we would re-establish the line run by W. A. Ferris in 1850 which was in conformity to instructions from the General Land Commission of the General Land office of the State of Texas, a certified copy of which is hereto attached and in obedience to the order of your Honorable Courts on the 14th day of June 1892 at 11 o'clock A.M. we met at a point in Red Oak Bottom supposed to be the 23d mile post on the original Ferris line which meeting was agreed upon at our conference heretofore alluded to. After running several random lines we succeeded in locating approximately the original S W cor of Dallas County as was established by W. A. Ferris. From the S W cor. of Dallas County we ran a random line east and found marked timber on entering the Trinity River Bottom but not being able to find any of the witness trees called for by Ferris we we unable to determine with any degree of certainty the true boundary line we continued our course east crossing the Trinity river where we found a frog pond of great extent accurately described

by Ferris, we found ash trees in the frog pond plainly marked but did not find any of the bearings called for in his report, We continued our course east to the west bank of the Trinity river the same being centre Trinity, and we believe and agreed from the distance given in the Ferris Field notes and the Topography of the Country at this point, that we had found the true Ferris line. The distance called for in the Ferris Field notes from the W. Bank of the centre crossing of the Trinity River to the East bank of west crossing of same is 511 vrs. the distance as measured by us is 565 vrs. being an excess of 54 vrs. owing to the topography of the river a line North or South of the line as adopted by us for the Ferris line would make the distance across the bend of the river far in excess of either of the above measurements, as will be seen by accompanying plat we began our measurement on the West bank of centre Trinity River which is 231 vrs. N. 89° 51 East from first mile post traving West from the S.E. cor. of Dallas County, from which point, a point 18 5/10 vrs. North, an Elm 18 in. brs. N. 79° 45 W. 9. 1/10 vrs. marked D. Elm 18 in. brs. N. 35° W. 7 8/10 vrs. marked A. K. Y. and an Ash brs S. 81° 35, W. 7. 5/10 vrs. and a point of the east bank of river brs. N. 55° 15 E. another point of river brs. S. 58° 45 E.--Thence S. 89° 51. W. 172 vrs. an ash marked Y. D. C. on N. side and K. E. C. on S. Side, said ash also has the old Ferris marks upon it. Thence S. 89° 51. W. 231 vrs. first mile post, standing in frog Bond as described by Ferris--Thence S. 89° 51. W. at 334 vrs. Trinity river, 337 vrs. W. bank of said river also the N.E. cor. of Ellis county a Bois d'arc post 8 in. square marked marked on ~~xx~~ N. side D. C. L. and ~~an~~ the S. side N.E. cor. E. C. from said post an Elm 30 in. brs. N. 88° 30 W. 32 8/10 vrs. marked K.Y. and an Ash 30 in. brs. N. 72° 35 W. 19 3/10 vrs. marked K.Y. at 1626 8/10 vrs. a bois d'arc post, from which an Elm 8 in. brs. N. 88° 30, E. 35 9/10 vrs. marked D. C. L. on W. side and Y. K. on E. side, also an Elm 14 in. brs. N. 16° 45 E. 7 vrs. marked K. Y. also an ash 18 in. brs. S. 22° 30 E. 13 9/10 vrs. marked K.Y. a hackberry 12 in. brs. S. 82° 30 W. 8 vrs. marked K. at 1900 8/10 vrs. second mile post, at 1900 8/10

vrs. 3. mile post marked D. C. L. on N. side and E. C. L. on S. side on E. side 111 M. from said post an Elm 24 in. brs. N. $46^{\circ} 05' W.$

4 $\frac{3}{10}$ vrs. marked $\overline{\overline{X}}$ D. C. L. another 12 in. brs. S. $70^{\circ} 30' E.$ 12 $\frac{6}{10}$ vrs. marked $\overline{\overline{X}}$ E. C. L. and an Ash 18 in. brs. S. $29^{\circ} 30' W.$ 21 $\frac{4}{10}$ vrs. marked $\overline{\overline{X}}$ E. C. L. at 590 vrs. 10 mile Creek. 1900 $\frac{8}{10}$ vrs. 4th mile post, a bois d'arc post marked D. C. L. on N. side and E. C. L. on S. side, from said post an Elm 12 in. brs. S. $79^{\circ} W.$ 15 $\frac{5}{10}$ vrs. marked $\overline{\overline{X}}$ E. C. L. another 8 in. brs. N. $58^{\circ} 40' W.$ 13 $\frac{7}{10}$ vrs. marked D. C. L. $\overline{\overline{X}}$ another 12 in. brs. S. $11^{\circ} W.$ 15 $\frac{5}{10}$ vrs. marked $\overline{\overline{X}}$ E. C. L. at 830 vrs. N. W. line of Daniel Davis Survey, 1509 vrs. N. $60^{\circ} E.$ from his N. W. corner and 81 vrs. S. $60^{\circ} W.$ from S. E. cor. of Thomas Kemp Survey 967 vrs. an Elm marked D. C. E. K. Y. at 1253 vrs. prairie at 1668 $\frac{8}{10}$ vrs. 4 vrs. S. of a Hackberry with Ferris marks upon it, at 1900 $\frac{8}{10}$ vrs. 5th. mile post a bois d'arc post 8 in. square standing at foot of high hill marked D.C.L. on N. side and E. C. L. on S. side on E. side 5 M. on W. side X XV.--Thence S. $89^{\circ} 56' W.$ at 56 $\frac{7}{10}$ vrs. small timbered branch course N. and S. at 191 vrs. a point from which an Elm 15 in. brs. S. $7^{\circ} 30' E.$ 238 vrs. marked $\overline{\overline{X}}$ E. C. said tree is ~~xx~~ 4 vrs. S. of line run J. M. Strong and others, also an Elm 12 in. brs. N. $3^{\circ} 50' W.$ 141 $\frac{8}{10}$ vrs. marked $\overline{\overline{X}}$ K.Y. said point is in cotton field on Western slope of a hill about 10 vrs. W. of sumit at 622 vrs. timber, at 690 vrs. centre of branch, at 753 vrs. centre of branch, at 774 vrs. centre of branch, at ~~697~~ 797 vrs. centre of branch, at 828 vrs. centre of branch, at 996 vrs. centre of small drain, at 1295 vrs. the West line of the Thomas Kemp survey, and 1194 vrs. N. $30^{\circ} W.$ from his S. E. cor. 1900 $\frac{8}{10}$ vrs. 6th mile post, ~~xx~~ on Eastern slope of hill about 88 vrs. W. of a little Ravine, between two hills, and about 140 vrs. E. of sumit, at 396 vrs. branch, at 799 vrs. road N. & S. at 1414 vrs. creek, at 1867 vrs. E. line of Mason Phelps survey, 526 vrs. N. $30' W.$ from the S.E. cor. of said Phelps survey this cor. being also the S.W. cor. of the Thomas Menifee survey, 1900 $\frac{8}{10}$ vrs. 7th. mile post, standing on W. slope of Hill about half way from foot to sumit, marked E.C.L. on S.

72

side and D. C. L. on N. side, on W. side XX111, on E. side 7. M. from which an Elm 12 in. brs. S. $45^{\circ} 05$ W. 130 $\frac{4}{10}$ vrs. marked X E. C. and a China 10 in. brs. S. $40^{\circ} 10$, W. 136 $\frac{7}{10}$ vrs. marked X E. at 104 vrs. ravine 1032, vrs. ravine, at 1900 $\frac{8}{10}$ vrs. the 8th mile post standing between two on Eastern slope of W. hill about half way between two branches running in different directions, ~~xxx~~ one coming down on N. side of E. hill, and the other on the S. side of W. hill from which two lone cottonwoods 18 in. 1 brs. S. $20^{\circ} 25$ W. 406 vrs. the other brs. S. $19^{\circ} 30$. W. 426 $\frac{4}{10}$ vrs. and a point of a thicket on western slope of E. hill brs. S. 52 E. about 150 vrs. at 828 $\frac{7}{10}$ vrs. H. & T. C.R.R. Course about N. & S. 5 vrs. N. of trestle, another trestle 177 $\frac{8}{10}$ vrs. N another 264 $\frac{9}{10}$ vrs. S. at 1900 $\frac{8}{10}$ vrs. 9th mile post, at about 1013 vrs. an Elm 8 in. brs. S. $5^{\circ} 05$. E. 103 $\frac{8}{10}$ vrs. marked K. Y. X another ~~xx~~ 24 in. brs. N. $77^{\circ} 30$. W. 190 $\frac{2}{10}$ vrs. marked X D. C. XX 1180 vrs. ravine, 1802 vrs. branch, at 1900 $\frac{8}{10}$ vrs. 10th mile post, ~~xx~~ on Eastern slope of hill, from which a double Elm 5 & 9 in brs. S. $63^{\circ} 40$. E. 84 $\frac{4}{10}$ vrs. marked X E. C. and a walnut 3 in. brs. XX S. $75^{\circ} 25$. W. 97 $\frac{5}{10}$ vrs. marked X K.Y. D.C.L. at 95 vrs. the E. line of E.S. Miller's Survey, 826 vrs. S. 30° E. from his N. E. cor. at about 568 vrs. a point on top of high hill, an Elm ten in. brs. S. 1° W. 87 vrs. marked K. Y. at 1792 vrs. the N.W. line of Rial Morgan's Survey, 505 vrs. 60° W. from his N.E. cor. at 1900 $\frac{8}{10}$ vrs. 11th. mile post, at 1900 $\frac{8}{10}$ vrs. 12th mile post standing in a large field, marked D. C. L. on N. side and E. C. L. on S. side at 1035 vrs. spring branch course N & S. at 1900 $\frac{8}{10}$ vrs. 13th mile post, which stands 10 vrs. W. of the N. W. line of Wm Winniford survey, S. 60° W. 768 vrs. from his N. E. cor. at 1900 $\frac{8}{10}$ vrs. 14th mile post, in prairie glade from which a little crooked Elm 6 in. brs. S. $0^{\circ} 30$ E. 97 vrs. marked X K.Y. and a well of good water brs. S. $32^{\circ} 30$. W. 77 $\frac{4}{10}$ vrs. and a Chittum 7 in. brs. N. 15° W. 43 $\frac{7}{10}$ vrs. marked X K. Y. at 853 vrs. bear Creek course east about 20 vrs. N. of wild cat island, at 1070 vrs. E. line of P. P. Kirkland survey, and W. line of P. P. Smith's survey, 113 vrs. N. from S. W. cor. of said survey, 1240 vrs. centre of Bear Creek, 1748 vrs a point 83 vrs. N. of said Creek,

and 12 vrs. N. of the widow Kirkland house, at 1900 8/10 vrs. 15th mile post, 14 vrs. N. of the N. bank of Bear Creek, from said post a large Walnut 30 in. brs. S. 87° 30 E. 145 8/10 vrs. marked X K. Y. and the mouth of a small branch running into Bear Creek from the south brs. S. 37° W. 40 vrs. and another coming in from the south brs. S. 38° 15. E. 143 vrs. and a small Airoya running into creek X, from the south, brs. S. 8° 70 8/10 vrs. at 125 vrs. Bear Creek, at 320 vrs. a point 30 vrs. N. of said creek, 390 vrs. said creek, 513½ vrs. the M. K. & T.R.R. 10½ vrs. S. of the S. End of Trestle No. 1823, across Bear Creek and 49 vrs. S. of the centre of bear creek, at 991 vrs. the W. line of P. P. Kirkland's survey, 114 vrs. N. from the S. W. cor. of said survey, at 1900 8/10 vrs. 16th. mile post, marked D. C. L. on N. side and E. C. L. on S. side at 1900 8/10 vrs. 17th. Mile post, marked D.C.L. on N. side, and E. C. L. on S. Side at 215 vrs. a branch, 225 vrs. two lone elms about 10 vrs. apart, (1) 6 vrs. N. of line and the other 4 vrs. S. of line, 1133 vrs. an old hedge, the W. line of James Joy survey, 123 vrs. N. of his S. W. cor. at 1900 8/10 vrs. 18th mile post 1795 vrs. spring branch N. & S. 1900 8/10 vrs. 19th. mile post, from which an Elm 18 in. brs. N. 81° 55 E. 72 4/10 vrs. marked X K.Y. and a pecan 20 in. brs. S. 23° E. 107 9/10 vrs. marked X E. C. at 1320 vrs. branch, 1132 vrs. the west line of S. Clarks survey, 137 vrs. N. of his S. W. cor. at 1900 8/10 vrs. 20th mile post, marked D. C. L. on N. side, and E.C.L. on S. side, 145 vrs. branch, 1079 vrs. little creek at 1150 vrs. the East line of N. C. Laughlin survey, 135 vrs. N. of the S.E. cor of said survey, at 1900 8/10 vrs. 21st mile post marked D. C. L. on N. side and E.C.L. on S. side at 1144, vrs. E. line of H. M. Rawlins survey, 144 vrs. N. of his S. E. cor. at 1900 8/10 vrs. 22nd mile post, 8 in. square marked D.C.L. on N. side and E. C. L. on S. side 960 vrs. branch, at 1900 8/10 vrs. 23rd mile post on Prairie ridge, from which an elm on West bank of Spring Branch brs. S. 72° W. 308 6/10 vrs. marked X and an Elm standing on east bank of said branch, 289 8/10 vrs. W. and about 2 vrs. S. of line marked X E. C. at 194 vrs. the East line of W. C. Billingsley survey, 169 vrs. N. of its S. E. corner at 290 vrs. branch, 1434 vrs. E. bank of Red oak Creek, course east at 1520 vrs. W. bank of said creek 1560

vrs. the mouth of a small Airoya running into red oak Creek, about 10 vrs. N. of line. Thence up the S. side of said Airoya crosses it at 1700 vrs. about its head at 1900 8/10 vrs. 24th. mile post, on the edge of a high bluff of the bottom of Red Oak Creek, about 40 vrs. E. of the edge of prairie glade jetting down into the forks of Red Oak Creek, from which a spotted Oak 30 in. brs. S. 65 E. 5 vrs. marked $\overline{\overline{\overline{X}}}$ K.Y. E. C. and another 12 in. brs. N. 35° W. 15 4/10 vrs. marked $\overline{\overline{\overline{X}}}$ K. Y.D.C. and another 12 in. brs. N. 43° 15 W. 27 6/10 vrs. marked $\overline{\overline{\overline{X}}}$ at 588 vrs. the West line of Fred Handy's survey, 118 vrs. N. of his S. W. cor. at 1240 vrs. the head of a small timbered branch, at 1900 8/10 vrs. 25th mile post, from which the head of a small timbered branch brs. S. 12° W. 297 vrs. and a small grove of Hackberries and Chittums brs. S. 77° 45 W. 372 vrs. and the N. E. cor. of the G.C. and S. F. R.R. Depot in the City of Cedar Hill brs. N. 12° W. about 4 miles at 1135 vrs. the West line of the S. A. and M. G. R.R. Survey, 119 vrs. N. of its S. W. cor. at 1900 8/10 vrs. 26th. mile post, on top of a ridge between two draws, from which two lone Hackberries 12 in. brs. N. 56° 15 E. 360 vrs. marked $\overline{\overline{\overline{X}}}$ K.Y. and a well of good water in valey on the S. Baggett place brs. S. 53° 15 W. 562 8/10 vrs. at 236 vrs. the G. C. and S. F. R.R. at 1135 vrs. the W. line of Hugh Robinson survey, and 95 vrs. N. of his S. W. cor. at 1900 8/10 vrs. 27th. mile post, on western slope of the Hill, from this point the cross timbers are in full view ranging N. & S. and Comanche Peak brs. 79° W. about 40 miles, at 1053 vrs. timbered branch, at 1900 8/10 vrs. 28th. mile post, standing about 33 vrs. N. of Branch, from which a forked Elm 14 in. brs. N. 43° 50. E. 90 2/10 vrs. marked $\overline{\overline{\overline{X}}}$ D.C. and a cluster of three Elms about 14 in. brs. S. 15° 05. W. 43 6/10 vrs. marked $\overline{\overline{\overline{X}}}$ K.Y. also two Elms 14 in. one forked standing on South side of branch, brs. S. 61° W. 89 vrs. marked $\overline{\overline{\overline{X}}}$ E.C. 1135 vrs. the west line of Jacob Boydston survey, 60 vrs. N. of his S. W. Cor, 1856 vrs. a branch, at 1900 8/10 vrs. 29th mile post, marked D.C.L. on N. side and E. C. L. on the South side, at 185 vrs. J. McCombs west line, 40 vrs. N. of his S. W. cor. at 1135 vrs. the West line of the Hrs. of Francis Jones survey, 30 vrs. N. of his S. W. Cor at 1792 vrs. the West line of J. G. Garrett survey, 20 vrs. N. of his S. W. Cor. at

1900 8/10 vrs. 30th mile post at 440 vrs. 2 vrs. south of the S. W. cor. of Dallas County as located by J. M. Strong and J. J. Goodfellow special Surveyors for Dallas and Tarrant Counties, Oct. 8th. 1890, said corner being a bois d'arc post 8 in. square marked on W. side S. E. T. Co. on E. side S. W.C. D. Co. standing in edge of valley of branch at Edge of Mountain creek valley, from which a four inch Mesquite marked T.C. and X brs N. 68° W. 11 vrs. and a Mesquite 4 in. marked D.C. X brs. N. 20° 30 E. 26 vrs. and a Mesquite 10 in. standing on a hill brs. S. 37° 15 E. 250-3/4 vrs. and a Mesquite 14 in. marked X on S. side standing in valley of small branch, brs. N. 73° 30 E. 287 5/10 vrs. and a bend of branch brs. E. 235 vrs.--(Surface measurement) Line marks, 5 Hacks-Variation 8° 25' East.

D. Smith	:	Jno. M. Young
	:C.C.	
J. V. Denner	:	Jno. D. Kennard.

Special Surveyors for Dallas & Ellis
Counties.

We, Jno. M. young and Jno. D. Kennard Special Surveyors for Dallas and Ellis Counties, appointed by the honorable county courts of said counties to make a resurvey of the line between Dallas and Ellis counties do hereby certify that the foregoing field notes gives a full true and correct description of the survey as made by us upon the ground this the 30th day of July A.D. 1892. Jno. M. Young

Special Surveyor for Dallas County
Jno.D. Kennard
Special Surveyor for Ellis County.

THE STATE OF TEXAS : I, W. S. Skiles, Clerk, County Court, Dallas
COUNTY OF DALLAS : County, Texas, do hereby certify that the above
and foregoing is a true and correct copy of Report from J.M.Young and
John D. Kennard, Special Surveyors appointed by Dallas and Ellis Counties
for surveying and marking of the boundary line between said Counties, as
same appears of record in Volume No.5, Pages 567 to 581 inclusive,
Minutes of County and Commissioners Court of Dallas County, Texas.
Given under my hand and seal of office this 30th day of
July, A.D. 1919.

W. S. Skiles, Clerk, County Court
Dallas County, Texas.
By W. M. Nelson Deputy