

Mr. John Childs
Page 5
July 22, 1987

File Patented Acres	Original Grantee	Dallas Co. Abst./Ac.	Collin Co. Abst./Ac.	Denton Co. Abst./Ac.
N-3-2052 160	Lionel Simpson	#1340/62.5		#1211/97.5
N-3-2050 480	William B. Row	#1243/188		#1124/292
N-3-2045 160	Martin O'Neil	#1790/127		#987/33
F-3-2060 320	John H. Mounts	#903/209.5		#874/110.5
F-3-2062 320	William A. Trimble	#1791/246.5		#1268/73.5
R-3-1218 640	Hrs. of Gilbert C. Woolsey	#1792/219		#1402/421
R-S-2613 20	William T. Hyder	#1793/9.5		#1701/10.5
R-3-4907 497	Hrs. of Clarinda Squires	#1327/415		#1682/82
F-3-1567 240	Peter Harmonson	#1794/37.5		#604/202.5
F-3-1567 400	Peter Harmonson	#1795/49		#530/351
F-3-1763 320	Hrs. of Henry Turner	#1796/24.5		#1248/295.5

Mr. John Childs
Page 6
July 22, 1987

File Patented Acres	Original Grantee	Dallas Co. Abst./Ac.	Collin Co. Abst./Ac.	Denton Co. Abst./Ac.
F-3-4052 160	J. C. Moffatt	#1797/34		#886/104
			Rockwall Co. Abst./Ac.	
F-3-4055 230	Nathaniel Atterberry		#6/141	
N-3-435 320	Elisha M. Price		#256/8.5	
				Tarrant Co. Abst./Ac.
F-3-4052 160	J. C. Moffatt			#2048/22

Please note this information on your records.

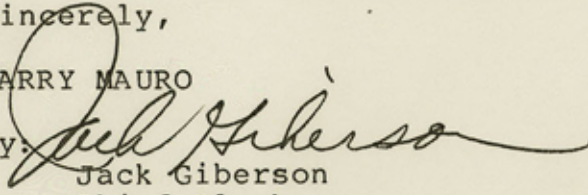
This information will be carried in Abstract Supplement "I", when published.

If you should have any further questions, please call.

Sincerely,

GARRY MAURO

By:


Jack Giberson
Chief Clerk

GM/JG/gb

2

Mr. John Childs
Page 6
July 22, 1987

File Patented Acres	Original Grantee	Dallas Co. Abst. \Ac.	Collin Co. Abst. \Ac.	Denton Co. Abst. \Ac.
---------------------	------------------	-----------------------	-----------------------	-----------------------

160	J. C. Mottac	#1797/34		4886/104
-----	--------------	----------	--	----------

			Rockwell Co. Abst. \Ac.	
--	--	--	-------------------------	--

County Boundary Line No. 7A
DALLAS
Schedule of acreage in various abstracts
 Filed ~~August~~ ^{July} 22 1987
 GARRY MAURO, Com'r
 By *Douglas Howard*

320	M. Price			
320	Eliha			
230	Atterberry			
230	Nathaniel			

160	J. C. Mottac			42048/22
-----	--------------	--	--	----------

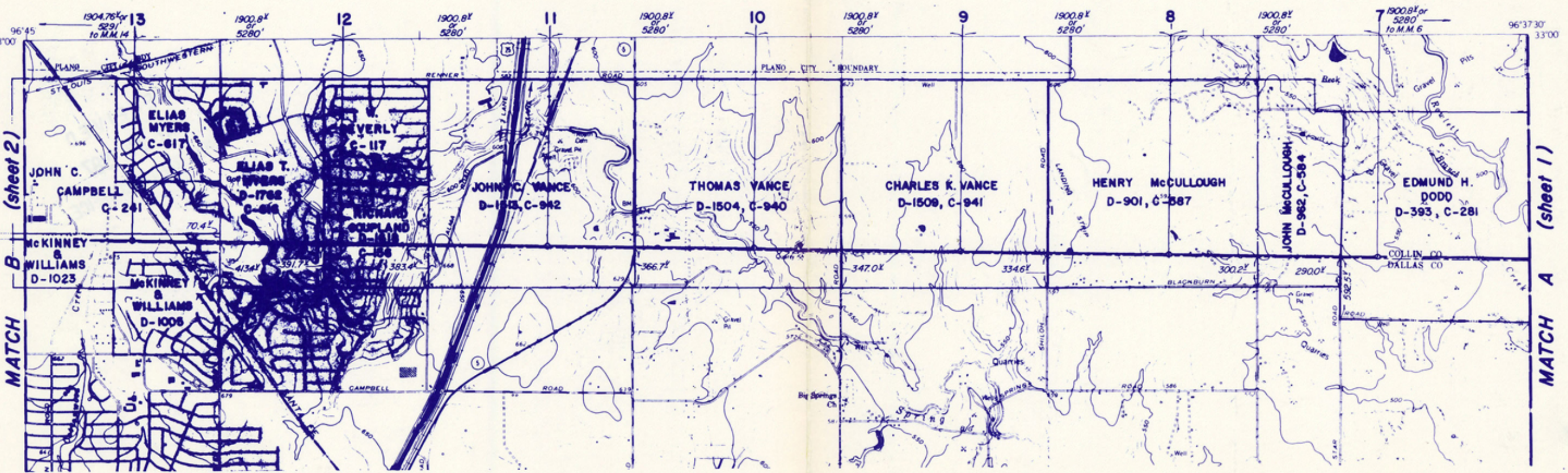
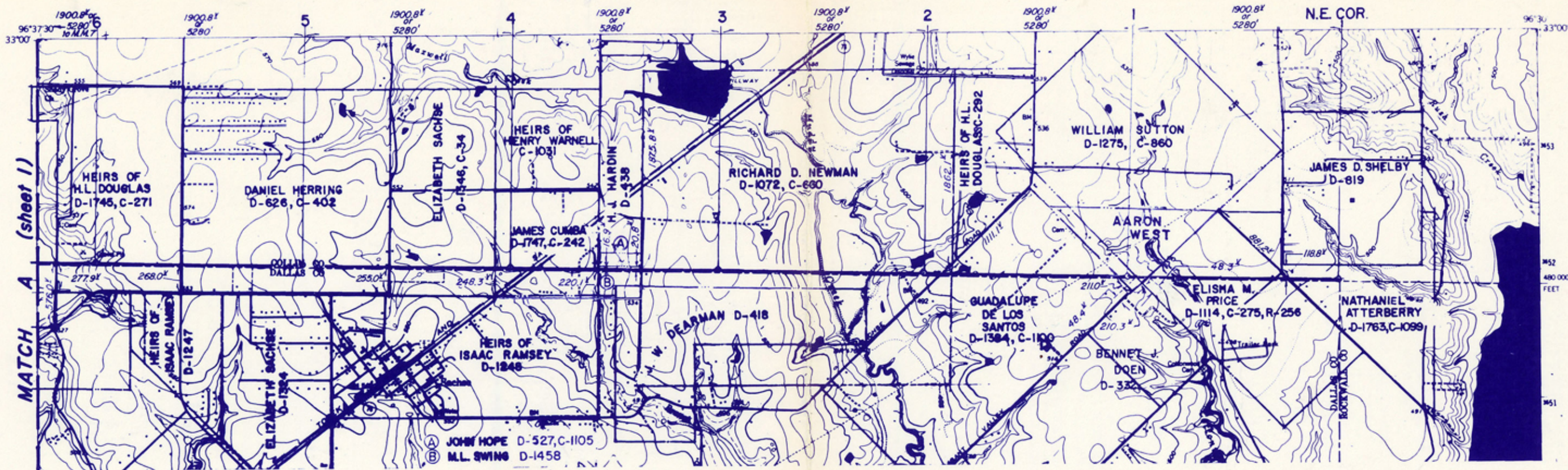
Please note this information on your records.
 This information will be carried in Abstract Supplement "I", when published.
 If you should have any further questions, please call.

Sincerely,

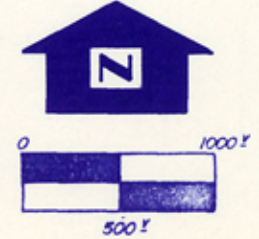
GARRY MAURO

[Signature]
 BY: Jack Giberson
 Chief Clerk

GM/JG/p



File No. County Bdry. Line No. 7B
Dallas County
 North Dallas County Line
 Filed June 8 19 87
 By Garry Mauro, Com'r
Douglas Howard
 Counter 52898



SCALE: 1" = 1000 feet

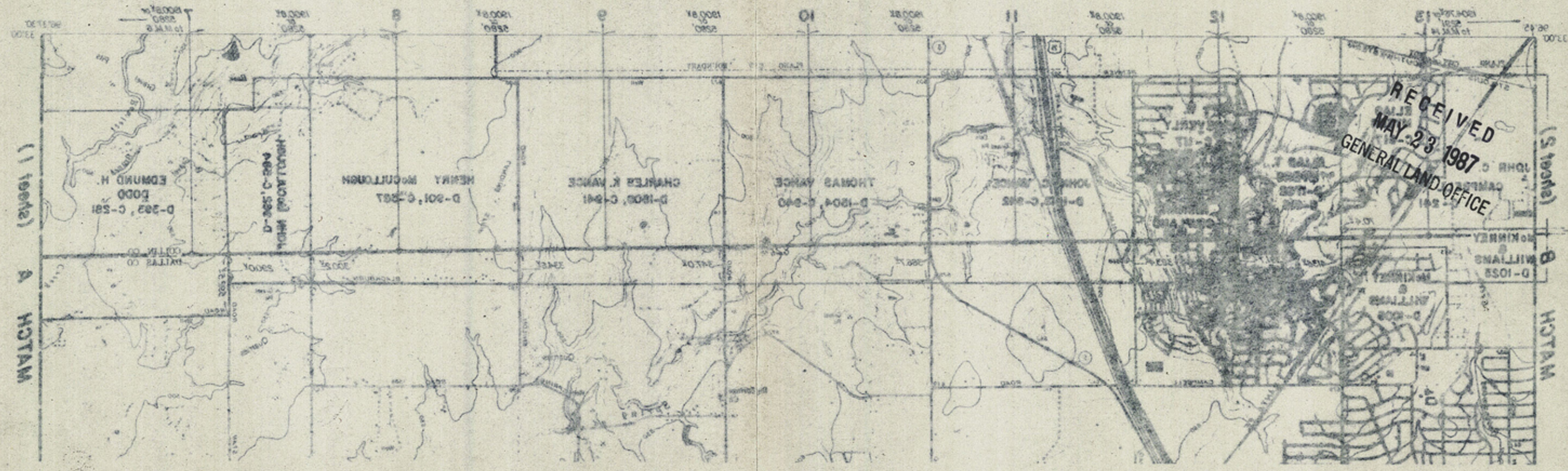
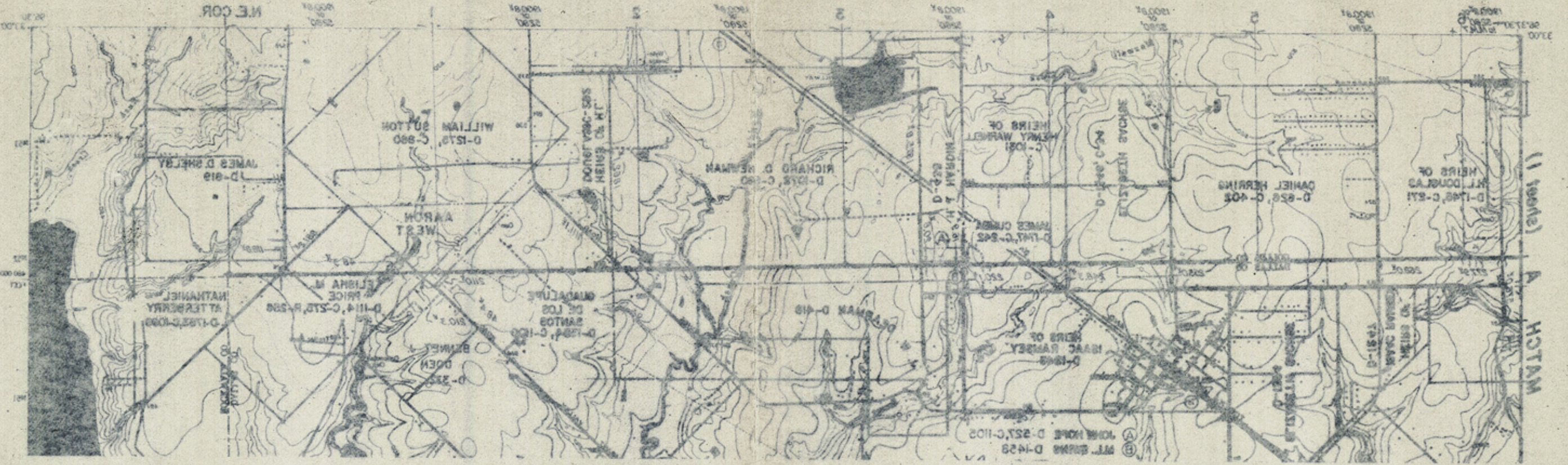
NOTE: ALL MILE MARKERS ARE BRASS CAPS SET IN CONCRETE MONUMENT FLUSH WITH THE GROUND, AND REFERENCED TO STATE PLANE COORDINATES (USGS NAD 27 DATUM)

361 951

PRESENTATION
 OF THE
North Dallas County Line
 A PORTION OF THE
South Collin County Line
 AND
 A PORTION OF THE
South Denton County Line

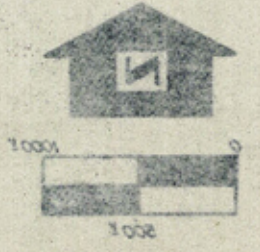
REV'S: 3/31/87
 1-2-87

361 952
 sheet 1 of 3 A.281



SOUTH DENTON COUNTY LINE
 AND
 A PORTION OF THE
SOUTH COLLIN COUNTY LINE
 A PORTION OF THE
NORTH DALLAS COUNTY LINE
 OF THE
PRESENTATION

NOTE: ALL MILE MARKERS ARE BRASS CAPS SET IN CONCRETE
 MONUMENT FLUSH WITH THE GROUND, AND REFERENCED TO
 STATE PLANE COORDINATES (USGS NAD 83 DATUM)

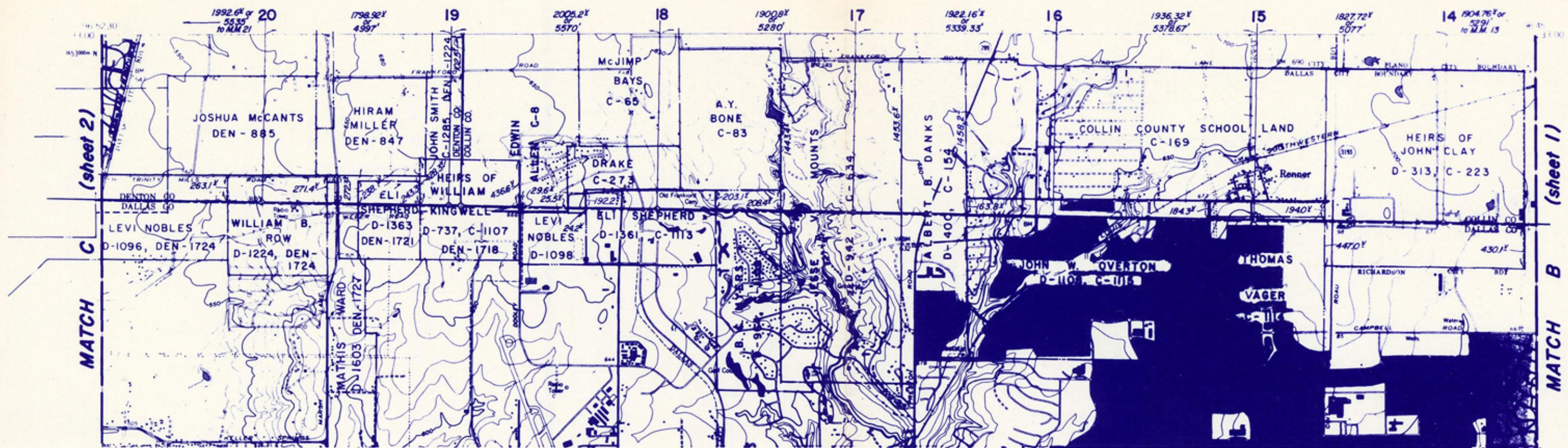


SCALE = 1" = 1000 FEET

RECEIVED
 MAY 23 1987
 GENERAL LAND OFFICE

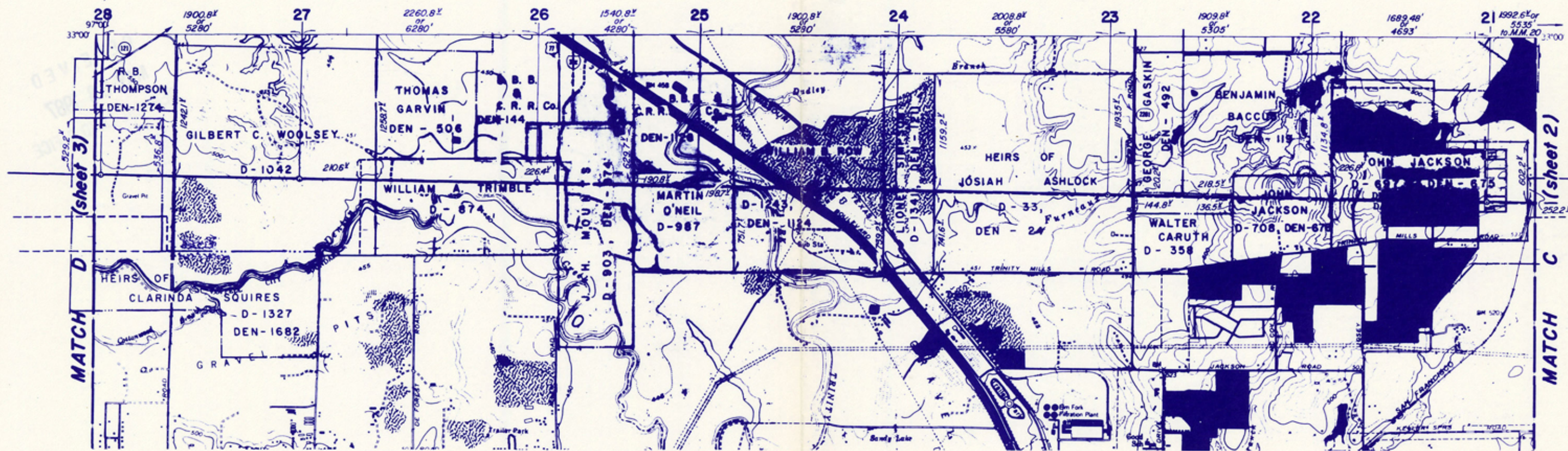
Filed
 GARRY MAURO, Com'r
 Dallas County Line
 Dallas County Line No. 73
 The No. County Bldg. Line No. 73
 Dallas County Line

County 5225



MATCH (sheet 2)

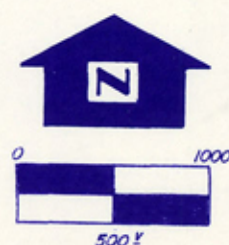
MATCH (sheet 1)



MATCH (sheet 3)

MATCH (sheet 2)

File No. County Bdry Line No. 7B
Dallas County
North Dallas County Line
 Filed June 8
 By GARRY MAURO, Com'r
Douglas Howard 19 87



SCALE: 1" = 1000 feet

NOTE: ALL MILE MARKERS ARE BRASS CAPS SET IN CONCRETE MONUMENT FLUSH WITH THE GROUND, AND REFERENCED TO STATE PLANE COORDINATES (USGS NAD 27 DATUM)

PRESENTATION
 OF THE
North Dallas County Line
 A PORTION OF THE
South Collin County Line
 AND
 A PORTION OF THE
South Denton County Line

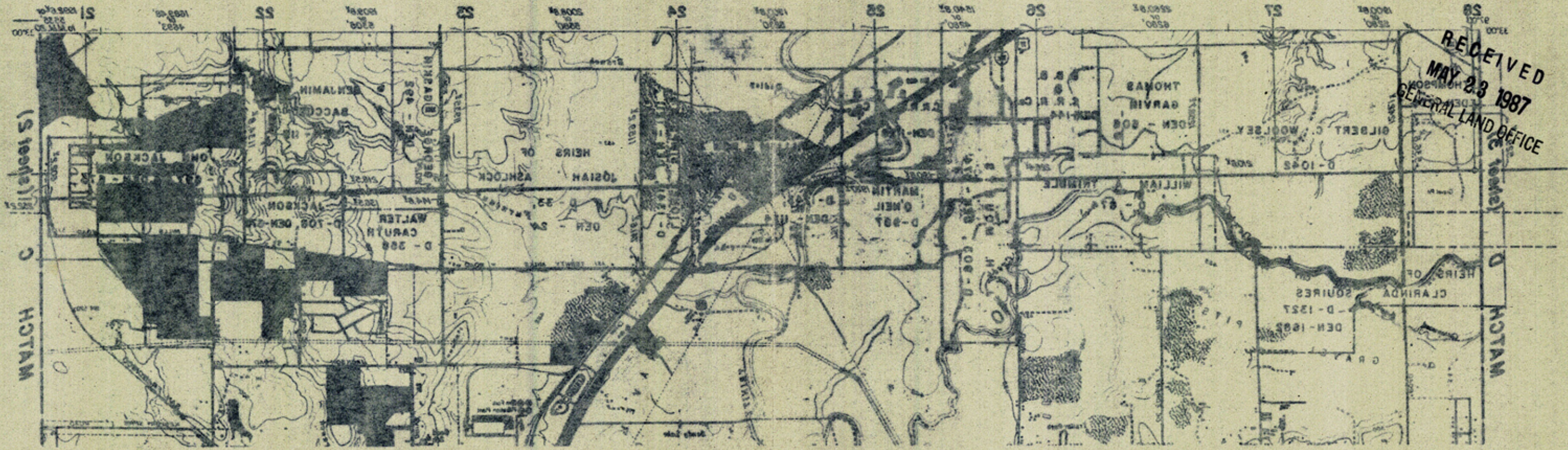
361 953

361 954

REV'S: 3-31-87
 1-2-87

sheet 2 of 3

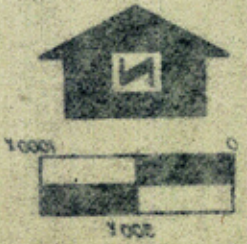
County 52300



RECEIVED
MAY 23 1987
GENERAL LAND OFFICE

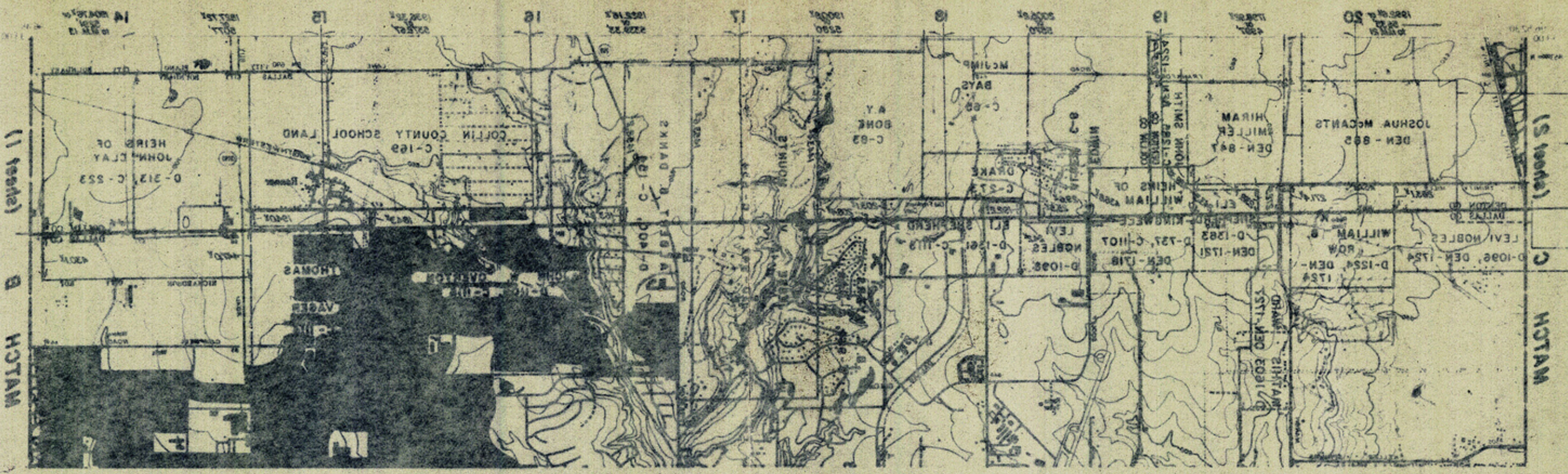
PRESENTATION
OF THE
North Dallas County Line
A PORTION OF THE
South Collin County Line
AND
A PORTION OF THE
South Denton County Line

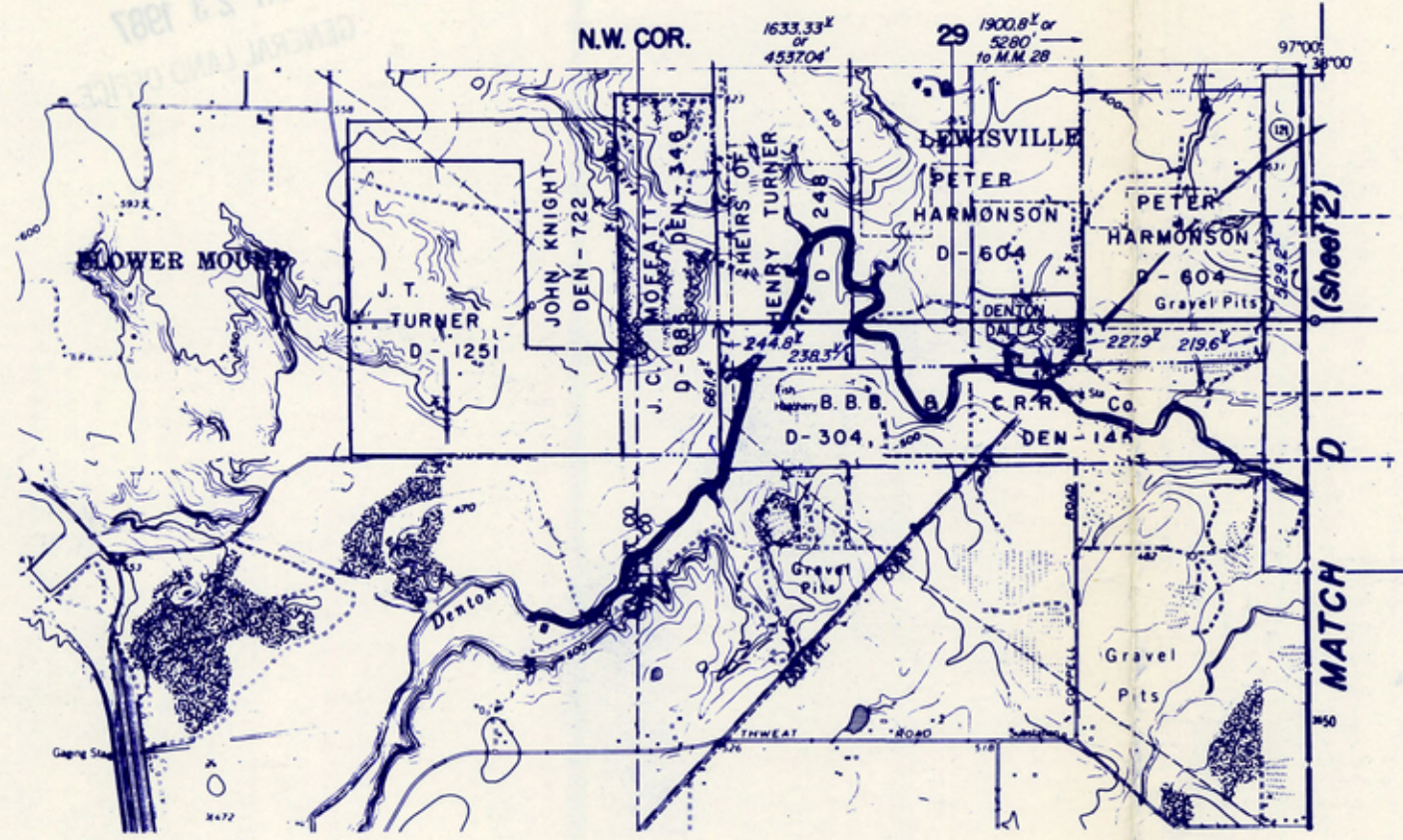
NOTE: ALL MILE MARKERS ARE BRASS CAPS SET IN CONCRETE MONUMENT FLUSH WITH THE GROUND, AND REFERENCED TO STATE PLANE COORDINATES (USGS AND SX DATUM)



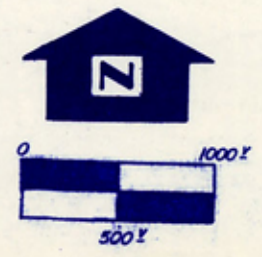
SCALE 1" = 1000 FEET

By Douglas Howard
GARRY MAURO, Com'r
North Dallas County Line
Dallas County
The No. County Bdr Line No. 78





File No. County Bdry Line No. 7 B
Dallas County
North Dallas County Line
 Filed June 8
 By GARRY MAURO, Com'r 19 87
Douglas Howard



SCALE 1" = 1000 yards

NOTE: ALL MILE MARKERS ARE BRASS CAPS SET IN CONCRETE MONUMENT FLUSH WITH THE GROUND, AND REFERENCED TO STATE PLANE COORDINATES (USGS NAD 27 DATUM)

361 955

PRESENTATION
 OF THE
North Dallas County Line
 A PORTION OF THE
South Collin County Line
 AND
 A PORTION OF THE
South Denton County Line

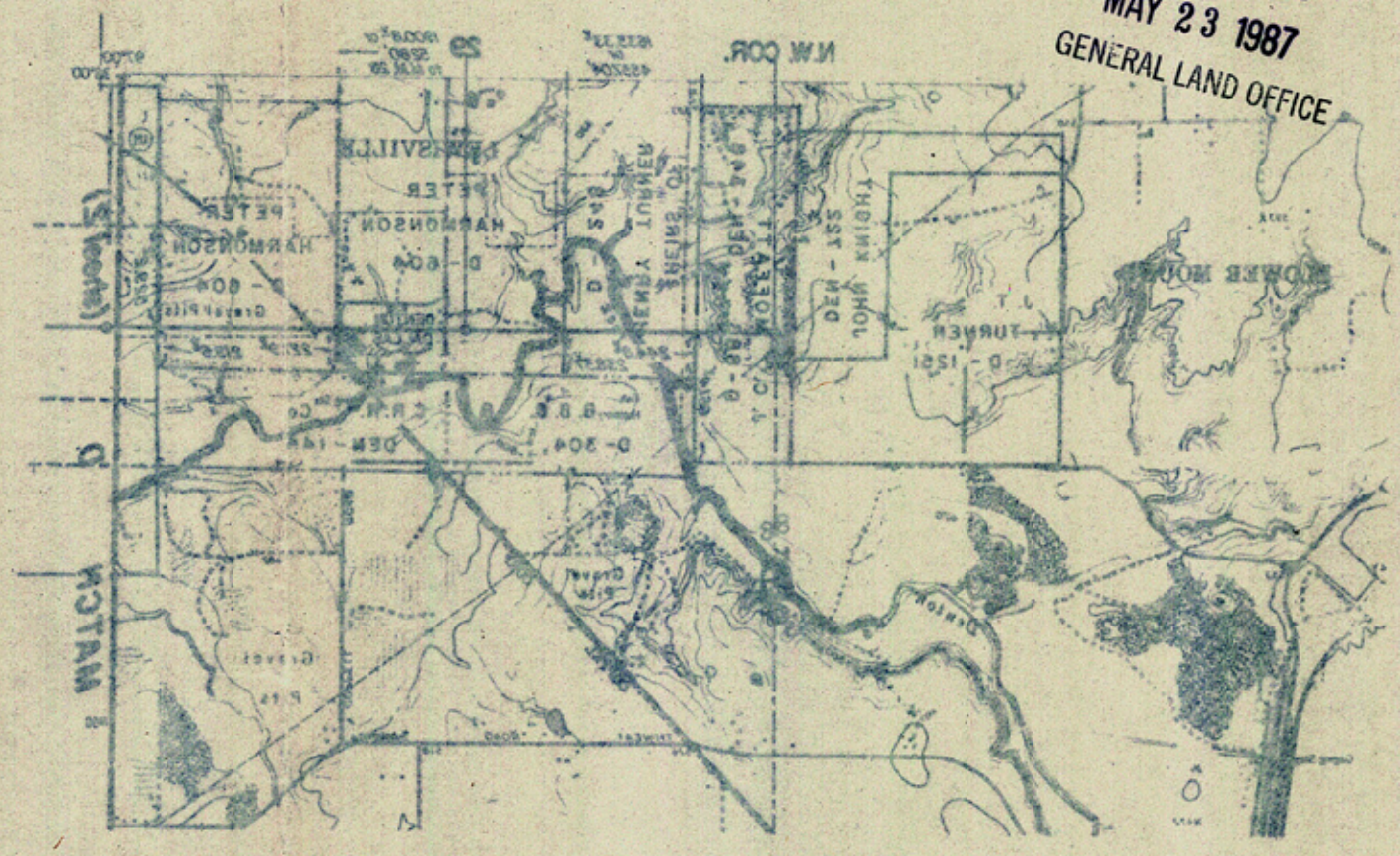
361 956

REV'S: 3-31-87
1-2-87

sheet 3 of 3

Counter 52302

RECEIVED
MAY 23 1987
GENERAL LAND OFFICE



PRESENTATION
OF THE
North Dallas County Line
A PORTION OF THE
South Collin County Line
AND
A PORTION OF THE
South Denton County Line

NOTE: ALL MILE MARKERS ARE BRASS CAPS SET IN CONCRETE
MONUMENT FLUSH WITH THE GROUND, AND REFERENCED TO
STATE PLANE COORDINATES (REGS AND 27 DATUM)



File No. County Bar Line No. 78
North Dallas County Line
Dallas County Line
Filed June 8
19 87
BY GARRY MAURO, Com'r
County

County 5223

REV. 1-8-87
REV. 3-31-87

Sheet 343

381
382

381
382