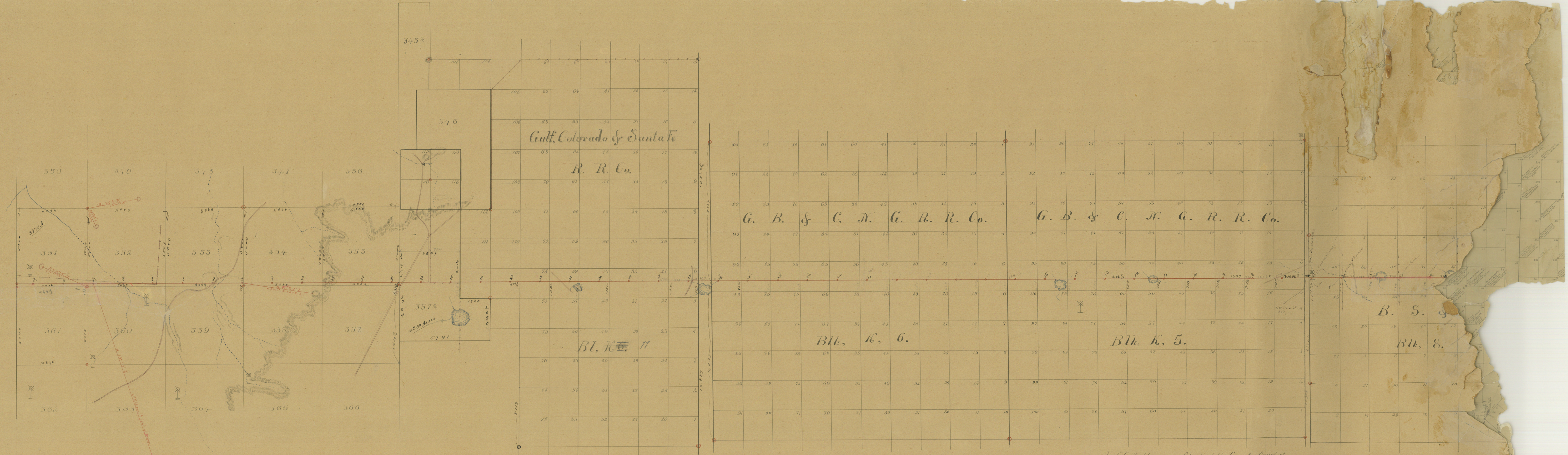


New Index

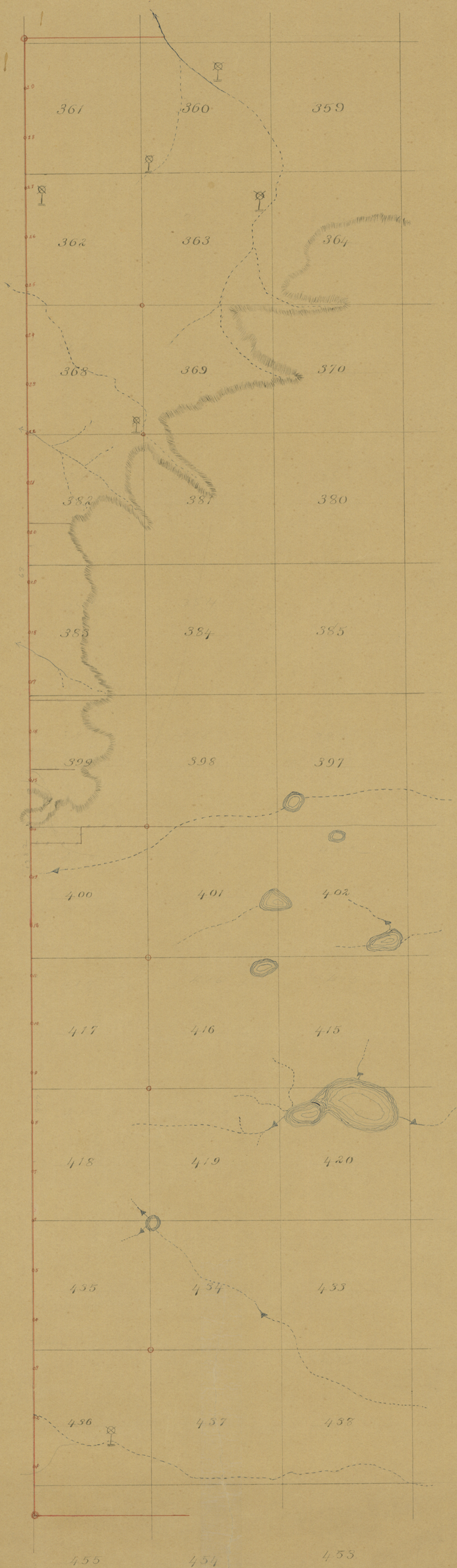


Sketch showing the North Boundary line  
of Deaf Smith County and the South line  
of Oldham County,  
Computed by  
Baldwin Girard  
Successor Therman Texas  
Scale 20000000 = 1 inch

I C. G. Witherspoon, Clerk of the County Court of  
Deaf Smith County Texas, do hereby certify that this map  
is a true and correct copy of the original now on file in  
my office, and that the same is duly recorded in Book  
C Pages 5, 4, 5, 6, 7.  
Witness my hand and  
affix the Seal of said Court.  
Done at La Plata Texas this 26 day  
of Oct. A.D. 1894. C. G. Witherspoon



New Mexico



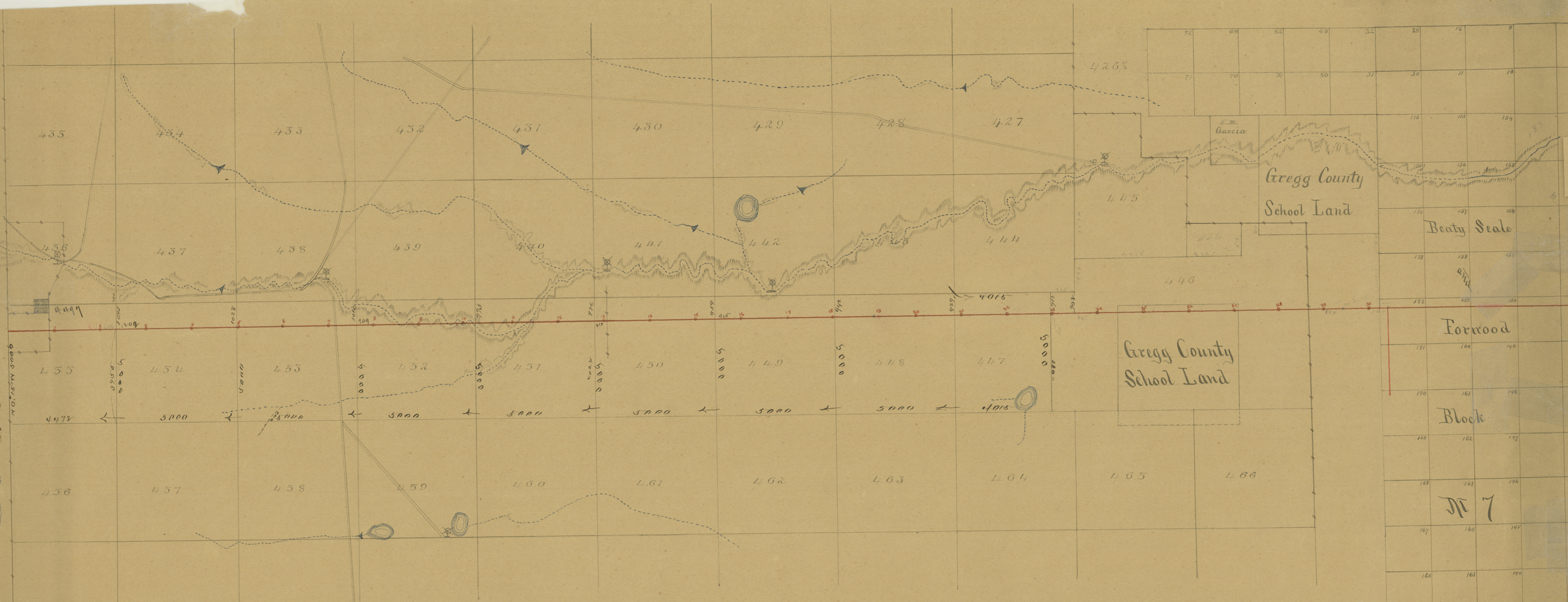
I, C. G. Witherspoon, Clerk of the County Court of Deaf Smith County, Texas, do hereby certify that the above is a true and correct copy of the original now on file in my office, and that the same is duly recorded in Book 6, Pages 32 & 33.

Witness my hand and seal of office the seal of said Court this 8th day of October A.D. 1854.

C. G. Witherspoon  
 C. C. D. S. C. T.  
 By W. B. Fuller deputy



Neio Mexico  
N 0° 15' W



76	69	52	49	32	28	12	9
71	70	51	50	37	30	11	10
176	165	154					
174	157	152					
173	158	151					
172	159	150					
171	160	149					
170	161	148					
169	162	147					
168	163	146					
167	164	145					
166	165	144					

Sketch showing the South boundary line of Deaf Smith County and the North boundary line of Parker County

Computed by  
Baldwin & Grand  
Surveyors  
Tascosa Texas

I, C. C. Witherspoon, Clerk of the County Court Deaf Smith County do certify that the above is a true and correct copy of the original now on file in my office and that the same is duly recorded in Book 6 Pages 21, 22 & 23

Witness whereof I here unto set my hand and affix the seal of said Court  
Done at LaPlata Texas this the 26<sup>th</sup> day of Oct 1894  
C. C. Witherspoon Clerk  
by J. P. Fuller Deputy

M 7



The Field Notes of the boundary line  
of Deaf Smith Co. as surveyed by  
Baldwin & Gerard.

Beginning at two large rocks inside  
large Circular trench South rock  
marked <sup>NW</sup><sub>DS</sub>

Thence E. at 1047 vrs a rock in  
ground marked 49 also 2 pits

Thence E. at 1900<sup>9</sup>/<sub>10</sub> vrs a rock in ground  
marked 48. also two large pits

Thence E. 1553<sup>9</sup>/<sub>10</sub> vrs the S.E. Cor Cap  
League 351 and the N.E. Cor Cap League  
360 and the S.W. Cor Cap League 352  
and the N.W. Cor Cap League 360. brass  
S. 462 vrs a round top mound

brass S 74° 15' N 3762 vrs from said  
cor. the N.E. cor Cap. League 351 brass

N. 4538 vrs from said point on  
line - a prominent round top

peak brass S 87<sup>1</sup>/<sub>2</sub>° E. 2872 vrs and a  
prominent round top peak

brass S 33° 45' E. 1000 vrs from said  
Cor of said League 351 at 1900<sup>9</sup>/<sub>10</sub>

vrs a rock in ground mtd  
47 from which a very prominent

mesa S 19° 18' E. 13845 to foot of same  
Thence E at 1718 vrs cross prong of

46  
Toujillo Creek at 1900<sup>9</sup>/<sub>10</sub> a large  
pile rock on N bank & above

Thence east at 478 vrs cross fence  
at 1900<sup>9</sup>/<sub>10</sub> vrs a rock and two



45 large pits rock marked 45  
 Thence E at 382<sup>8</sup>/<sub>10</sub> cross E line of  
 pasture fence, at 1900<sup>8</sup>/<sub>10</sub> a rock  
 44 in ground and 2 large pits - rock  
 marked 44 on top of small flat  
 top mesa.

Thence E at 1900<sup>8</sup>/<sub>10</sub> vrs a rock in  
 43 ground marked 43 also 2 large  
 pits, on old road

Thence E at 315 vrs cross Mojave Crk  
 42 at 1900<sup>8</sup>/<sub>10</sub> a rock in ground marked  
 42 also 2 large pits - same being  
 on N bank of ravine from which  
 the extreme S. point of round  
 rock capped mesa at foot of  
 plains bears N. 82.27 E. 4300 vrs

Thence E. at 164 vrs the S.E. cor Cap  
 League 353 and the N.E. cor Cap Lque  
 359 and the N.W. cor Cap Lque 354 and  
 the N.W. cor Cap Lq 358 bears N. 447 vrs  
 the N.E. cor Cap Lq 353 bears N. 4553 vrs

41 from said point on line at 1900<sup>8</sup>/<sub>10</sub>  
 vrs a rock and 2 pits - rock mkd  
 41 - for 41<sup>st</sup> mile

Thence E. at 1900<sup>8</sup>/<sub>10</sub> to rock pile and  
 40 2 pits - for 40<sup>th</sup> mile

Thence E at 632 vrs foot of plains  
 39 at 1427 vrs top of same at 1900<sup>8</sup>/<sub>10</sub>  
 rock marked 39 and two pits  
 for 39<sup>th</sup> mile

Thence E. at 1900<sup>8</sup>/<sub>10</sub> vrs a rock

Deaf Smith Co Bdry line #1



38 and two pits - rock marked 38 for 38<sup>th</sup> mile

57 Thence E at 1900<sup>8</sup>/<sub>10</sub> vrs rock marked

37 Thence E. at 632<sup>4</sup>/<sub>10</sub> vrs the S.E. cor of Cap League 357 brass S. 5439.4<sup>1</sup>/<sub>10</sub> vrs at 1900<sup>8</sup>/<sub>10</sub> vrs a rock and two large pits - rock marked 36 for the 36<sup>th</sup> mile

35 Thence E at 538<sup>8</sup>/<sub>10</sub> vrs cross XIT fence from which the N.W. cor of sur 103 Blk K11 brass S. 13815 vrs at 1900<sup>8</sup>/<sub>10</sub> vrs a rock mkd 35 and 2 pits for 35<sup>th</sup> mile

34 Thence E at 679 vrs the S.W. cor (in the East line) of Cap Lg 357<sup>1</sup>/<sub>2</sub> brass S. 1385 vrs at 1900<sup>8</sup>/<sub>10</sub> vrs a rock in ground marked 34 and 2 pits for the 34<sup>th</sup> mile

33 Thence E at 1900<sup>8</sup>/<sub>10</sub> vrs a rock in ground marked 33 and 2 pits for the 33<sup>rd</sup> mile Thence E at 679<sup>8</sup>/<sub>10</sub> vrs cross W line sur 73 Blk K11 from which the S.W. cor of sur 78 a semi-circular trench

32 and 2 pits - brass S. 8119 vrs at 1900<sup>8</sup>/<sub>10</sub> vrs a rock in ground and 2 pits - rock mkd 32 for 32<sup>rd</sup> mile

31 Thence E at 679<sup>8</sup>/<sub>10</sub> the S.W. cor sur 58 Blk K11 brass S. 1385 vrs at 1253 vrs cross road at 1900<sup>8</sup>/<sub>10</sub> vrs

DEAF Smith Co Betsy line #1



- 31 a rock in ground and two pits rock marked 31 for 31<sup>st</sup> mile  
Thence E. at 620 vrs a large lake basin bears S. about 365 vrs
- 30 at 679<sup>9</sup>/<sub>10</sub> vrs the N.E. cor of sur 58 Blk K11 bears S 515<sup>9</sup>/<sub>10</sub> vrs the S.E. cor of said sur bears S 1385 vrs at 1900<sup>9</sup>/<sub>10</sub> vrs a rock in ground and 2 pits rock mks 30 for the 30<sup>th</sup> mile  
Thence E at 679<sup>9</sup>/<sub>10</sub> vrs the S.E. Cor of sur 47 bears S. 1385 vrs at 1900<sup>9</sup>/<sub>10</sub> vrs
- 29 a rock in ground marked 29 and 2 pits for 29<sup>th</sup> mile  
Thence E at 679 vrs the S.W. cor of sur 21 Blk K11 bears S 1385 vrs at 1900<sup>9</sup>/<sub>10</sub> a rock in ground and 2 pits rock marked 28 for the 28<sup>th</sup> mile
- 28 Thence E. at 679 vrs the S.W. cor sur 6 Blk K11 bears S. 1385 at 1900<sup>9</sup>/<sub>10</sub> vrs a rock in ground and 2 large pits rock mks 27 for the 27<sup>th</sup> mile  
Thence E. at 107<sup>4</sup>/<sub>10</sub> vrs Alamositas and La Plata road at 679<sup>9</sup>/<sub>10</sub> vrs the N.E. cor sur 13 Blk K11 bears S. 13820<sup>9</sup>/<sub>10</sub> vrs the S.E. Cor of sur 1 Blk K11 bears S 10889 vrs at 670 to 1600 vrs a large lake basin bears S. 300 vrs at 1606<sup>9</sup>/<sub>10</sub> vrs crosses It line sur 96 Blk K6 G.B. & C. N.Y. R.R. Co. from which the N.W. cor of sur 100 Blk K6 bears
- 26

DEAF Smith co. Bdry. July 4th



26 N. 8769 vs the S.W. Cor of sur 91 Blk K  
 6 bears S. 10234 vs at 1900<sup>9</sup>/<sub>10</sub> vs  
 a rock in ground and 2 pits  
 rock marked 26 for 26<sup>th</sup> mile -  
 Thence E. at 1606<sup>9</sup>/<sub>10</sub> vs cross St line  
 sur 85 Blk K6 from which the S.W.  
 cor of said sur. bears S. 625 vs  
 at 1900<sup>9</sup>/<sub>10</sub> vs a rock in ground  
 and 2 pits - rock marked 25 for  
 25<sup>th</sup> mile

Thence E at 1606<sup>9</sup>/<sub>10</sub> vs cross St line  
 of sur 76 Blk K6. from which the  
 S.W. Cor of said sur. bears S. 631  
 vs at 1900<sup>9</sup>/<sub>10</sub> vs a rock in the  
 ground and 2 pits - rock mkd  
 24 for 24<sup>th</sup> mile -

Thence E at 1606<sup>9</sup>/<sub>10</sub> vs cross St line  
 sur 65 from which the S.W. Cor  
 of said sur. bears S. 636 vs at  
 1900<sup>9</sup>/<sub>10</sub> vs a rock in ground  
 marked 23 also 2 large pits for  
 23<sup>rd</sup> mile

Thence E at 1606<sup>9</sup>/<sub>10</sub> vs cross St line  
 of sur 56 Blk K6 from which the  
 S.W. cor of said sur. bears S. 641<sup>9</sup>/<sub>10</sub> vs  
 at 1900<sup>9</sup>/<sub>10</sub> rock in ground and 2 pits  
 rock marked 22 for 22<sup>nd</sup> mile

Thence E at 1606<sup>9</sup>/<sub>10</sub> vs cross the St.  
 line sur 45 Blk K6 from which  
 the S.W. Cor of said sur bears  
 S 647 vs at 1560 vs cross La Plata



and Tascasa road at 1900<sup>9</sup>/<sub>10</sub> vrs a rock in ground and 2 pits - rock marked 21 for the 21<sup>st</sup> mile -

Thence E at 1606 vrs cross St line sur 36 Blk K6 from which the S.W. cor of said sur brs S 652 vrs at 1900<sup>9</sup>/<sub>10</sub> vrs a rock set in ground and 2 pits - for 20<sup>th</sup> mile

Thence E at 1606<sup>9</sup>/<sub>10</sub> vrs cross St line sur 25 Blk K6 from which the S.W. cor of said sur brs S 657 vrs at 1900<sup>9</sup>/<sub>10</sub> vrs a rock set in ground and 2 large pits - rock mtd 19 for 19<sup>th</sup> mile

Thence E at 1606 vrs cross St line sur 16 Blk K6 from which the S.W. Cor of said sur brs S 662 vrs at 1900<sup>9</sup>/<sub>10</sub> vrs a rock set in ground and 2 pits - rock mtd 18 for the 18<sup>th</sup> mile

Thence E at 1606<sup>9</sup>/<sub>10</sub> vrs cross St line of sur 5 Blk K6 from which the S.W. Cor of said sur brs S 668 vrs at 1900<sup>8</sup>/<sub>10</sub> vrs a rock set in ground and 2 pits - rock marked 17 for the 17<sup>th</sup> mile

Thence E at 1606 vrs cross the East line of sur 5 Blk K6. from which the S.E. cor of sur 10 Blk K6 brs S. 10177 vrs and the N.E. cor sur 1 Blk K6 brs S 8831 vrs at 1900<sup>8</sup>/<sub>10</sub> vrs a rock set in ground and 2 pits - rock marked 16 for the 16<sup>th</sup> mile

Thence E at 1606<sup>8</sup>/<sub>10</sub> vrs cross St line sur 86 Blk K5 from which the S.W. cor of said sur brs S. 678 vrs at 1900<sup>8</sup>/<sub>10</sub> vrs a rock set in ground and 2 pits - rock marked 15 for the 15<sup>th</sup> mile



Thence E. at 600 to 1500 vrs a large lake basin vrs  
 S. 800 vrs at 1606<sup>8</sup>/<sub>10</sub> vrs cross the N line  
 sur 75 Blk K5 from which the S.W. Cor. of  
 said survey bears S. 684 vrs at 1900<sup>5</sup>/<sub>10</sub> vrs  
 a rock set in ground and 2 pits - rock  
 marked 14 for the 14<sup>th</sup> mile

Thence E. at 1606 vrs cross the N. line of sur 66  
 Blk K5 from which the S.W. cor. of said sur  
 bears S 690 vrs at 1900<sup>5</sup>/<sub>10</sub> vrs a rock set  
 in ground and 2 pits - rock marked 13 for  
 the 13<sup>th</sup> mile

Thence E. at 1606<sup>5</sup>/<sub>10</sub> vrs cross N line sur 55  
 Blk K5 from which the S.W. cor. of said sur  
 bears S 696 vrs at 1900<sup>5</sup>/<sub>10</sub> vrs a rock set  
 in ground and 2 pits - rock marked 12  
 for 12<sup>th</sup> mile

Thence E. at 800 vrs N edge of lake basin at 1607  
 vrs cross N line of sur 46 Blk K5 from which  
 the S.W. Cor. of said sur. bears S. 703 vrs at  
 1700 vrs E. bank of lake basin at 1900<sup>5</sup>/<sub>10</sub> vrs  
 rock in ground marked 11 for 11<sup>th</sup> mile

Thence E. at 1606 vrs cross N. line sur  
 35. Blk. K. 5. from which the S.W. cor. of  
 said sur. bears S. 710 vrs. at 1900<sup>8</sup>/<sub>10</sub> vrs  
 a rock set in ground and 2 pits  
 rock marked 10 for the 10<sup>th</sup> mile

Thence E. at 1606 vrs cross the N. line of  
 sur. 26. Blk. K. 5. from which the S.W.  
 cor. of said sur. bears S. 716 vrs  
 at 1900<sup>8</sup>/<sub>10</sub> vrs a rock set in the  
 ground and 2 pits - rock marked



9 for 9<sup>th</sup> mile

Thence E. at 1607 vrs cross the W line of  
sur 15 Blk. K.5. from which the S.W. Cor of  
said sur bears S 92° vrs at 1900<sup>8</sup>/<sub>10</sub>  
vrs a rock set in ground and 2 pits  
rock marked 8 for the 8<sup>th</sup> mile

Thence E. at 1515 cross road at 1607  
vrs cross W line sur 6 Blk. K.5. from  
which the S.W. Cor of said sur bears  
S. 731 vrs at 1900<sup>9</sup>/<sub>10</sub> vrs a rock set in  
ground and 2 pits rock marked  
7 for 7<sup>th</sup> mile

Thence E at 1607 vrs cross E line Blk  
5 from which the N.E. cor of sur 10  
Blk K5 a large east monument  
bears N 89°75 vrs and the S.E. cor of sur  
1 Blk. K.5. bears S 107°33 vrs Thence E  
at 284 cross W line sur 40 Blk. 8.  
from which the N.W. cor of sur 1 Blk  
33 bears N 2878.<sup>3</sup>/<sub>10</sub> vrs the S.W. cor  
of sur 21 Blk 8 B.S. & F bears S 68°22<sup>3</sup>/<sub>10</sub>  
vrs at 294 vrs a rock set in ground  
marked 6 for the 6<sup>th</sup> mile

Thence E at 59<sup>7</sup>/<sub>10</sub> vrs cross fence at 1890<sup>3</sup>/<sub>10</sub>  
vrs cross W line sur 39 Blk 8 B.S. & F  
from which the S.W. Cor of said sur  
bears S. 1120 vrs at 1900<sup>9</sup>/<sub>10</sub> vrs a  
rock set in ground marked  
5 for 5<sup>th</sup> mile

Thence East at 51<sup>3</sup>/<sub>10</sub> vrs cross fence at  
165 vrs cross draw at 900<sup>8</sup>/<sub>10</sub> vrs

Deaf Smith Co. Bdry. Line #1



road at 1890 vrs cross N line sur 38 Blk 8 B.S. & F from which the S.W. Cor of said sur brass S 1120 vrs at 1900<sup>8</sup>/<sub>10</sub> vrs a rock set in ground marked 4 for 4<sup>th</sup> mile.

Thence E. at 380 vrs N bank lake basin at 980 E. bank of same at 1890 vrs cross N line sur 37 Blk 8 B.S. & F from which the S.W. cor of said sur brass S. 1120 vrs at 1900<sup>8</sup>/<sub>10</sub> vrs rock set in the ground marked 3 for the 3<sup>rd</sup> mile

Thence E. at 1890 cross N. line sur 36. Blk 8. from which the S.W. Cor of said sur. brass S. 1120 vrs. at 1900<sup>8</sup>/<sub>10</sub> vrs a rock set in ground marked 2 for 2<sup>nd</sup> mile

Thence E at 1020 vrs N edge of lake basin at 1880 vrs E. Bank of same at 1890 vrs cross N line of sur 35 Blk 8 B.S. & F from which the S.W. cor of said sur brass S. 1120 vrs at 1900<sup>8</sup>/<sub>10</sub> vrs a rock set in ground marked 1 for 1<sup>st</sup> mile

Thence E at 1890 vrs cross N line sur 34 Blk 8 B.S. & F. from which the S.W. cor of said sur brass S 1123 vrs at 1900<sup>8</sup>/<sub>10</sub> vrs to 2 large rocks in large earth mound inside large circular trench 1 vara wide and 6 vrs in diameter rocks marked

SE SW  
OLD PTR  
NE NW  
DS RWA

Thence S. at 1123 vrs cross S line sur

Den F Smith Co. Bdry. Line #1



34 Blk 8. from which the S.W. cor of said  
 sur brass N. 12 vrs at 1900<sup>8</sup>/<sub>10</sub> vrs  
 a mound rock and 3 pits for 1<sup>st</sup>  
 mile on East line

Thence S. at 720 vrs cross road  
 at 740 vrs cross draw at 1900<sup>9</sup>/<sub>10</sub> mound  
 rock and 3 pits for 2<sup>nd</sup> mile

Thence S at 1900<sup>7</sup>/<sub>10</sub> vrs a mound  
 rock and 3 pits for 3<sup>rd</sup> mile

Thence S at 1123 vrs cross S line of  
 sur 10 Blk 8. from which the S.W. Cor  
 of sur 5. Blk 8 brass N 9553 vrs -  
 at 1900<sup>8</sup>/<sub>10</sub> vrs a mound stone and  
 3 pits for 4<sup>th</sup> mile

Thence S. at 1123 vrs cross S. line of  
 sur 51 Blk 7 B573. from which the  
 S.W. cor of said sur N 60 vrs at  
 1900<sup>9</sup>/<sub>10</sub> vrs a mound rock and  
 3 large pits for 5<sup>th</sup> mile

Thence S at 1080 vrs cross road at  
 1123 vrs cross S. line sur 52 Blk  
 7 from which the S.W. cor of  
 said sur. brass N 72 vrs. at 1900<sup>9</sup>/<sub>10</sub>  
 vrs a mound rock and 3 large  
 pits for 6<sup>th</sup> mile Thence S at 1080 vrs  
 cross fence on S line sur 53 Blk  
 7 from which the S.W. cor of said  
 survey brass N 98 vrs. at 1900<sup>9</sup>/<sub>10</sub>  
 a mound rock and 3 pits for  
 the 7<sup>th</sup> mile

Thence S at 1093 vrs cross S line



11  
S 154 Blk 7 from which the N.W. Cor  
sur. 49 J. J. R. R. Co. bears N 1997° W  
the N.W. Cor survey 46 Blk 7 bears  
N 150° W, at 1900 8/10 rods a mound  
and three pits for the 8 mile.

Thence S. at 1098 rods cross S line sur.  
50 J. J. R. R. Co. from which the S.W. Cor of  
said sur. bears N 108° W at 1900 8/10  
a mound and three pits for 9th mile

Thence S. at 895 rods cross North prong  
Palo Verde Creek at 1100 rods cross  
South line Sur. 47, J. J. R. R. Co. from  
which the S.E. Cor of Sur. 6, Blk 7  
B. S. & F. bears West 2025 rods, a large  
rock monument for corner, at 1815  
rods cross road at 1900 8/10 rods  
a mound and three pits for 10th mile

Thence S. at 580 rods edge of bluff,  
at 830 rods road, 1025 rods cross  
South prong Palo Verde Creek at 1106  
rods cross S. line sur 18, J. J. R. R. Co.  
from which the S.W. Cor of said sur.

bears N, 121° W, at 1900 8/10 rods a mound  
rock and 3 pits for the 11th mile

Thence S. at 220 rods top of bluff,  
at 810 rods cross road at 1109 rods  
cross South line of Sur. 15, J. J. R.  
R. Co. from which the S.W. Cor of said  
sur. bears S 123° W, at 1900 8/10 a mound  
rock and three pits for 12th mile.

Thence south at 900 rods a level basin



at 1109 vrb cross S. line of sur. 15 N. & G. N. R.R. Co. from which the S.W. Cor. of said sur. btb N. 132 vrb. at 1900  $\frac{8}{10}$  vrb mound rock and 3 pits for 13<sup>th</sup> mile Thence S. at 270 vrb cross road. 405 vrb cross fence 1110 vrb cross fence on S. line of sur. 18. N. & G. N. R.R. Co. from which the S. W. Cor. of said sur. btb N. 141 vrb. at 1900  $\frac{8}{10}$  a mound rock and three pits for 14<sup>th</sup> mile Thence S. at 300 to 700 vrb cross lake basin at 1164 vrb cross south line of sur. 47 N. & G. N. from which the S. W. Cor. of said sur. btb West 150 vrb. at 1900  $\frac{8}{10}$  vrb a mound rock and three pits for 15<sup>th</sup> mile Thence South at 1191 vrb cross South line of sur. 50 N. & G. N. from which the S.W. Cor. of said sur btb N. 160 vrb. the N. W. Cor. of sur. 80. N. & G. N. btb N. 2093 vrb. at 1900  $\frac{8}{10}$  a mound rock and three pits for the 16<sup>th</sup> mile.

Thence South. at 700 vrb a lake btb E. 150 vrb at 1900  $\frac{8}{10}$  vrb a mound rock and 3 pits for the 17<sup>th</sup> mile Thence S. at 1055 vrb cross road at 1500 vrb cross draw at 1900  $\frac{8}{10}$  vrb a mound rock and three pits for the 18<sup>th</sup> miles

Thence S. at 25 vrb cross lead rovine



at 1232 rods cross fence at 1900 $\frac{8}{10}$  rods a pile of rock and two pits for 19<sup>th</sup> mile.

Thence S. at 1203 rods cross fence at 1876 rods cross head of ravine at 1900 $\frac{8}{10}$  rods a mound rock and three pits for 20<sup>th</sup> mile.

Thence S. at 832 rods cross road at 872 rods cross road, at 1212 cross South line survey 143, from which the S. W. Cor of said sur. Lot St. 196 rods, The S. W. Cor of Sur 25 Blk 3 Lot West 9700 rods, at 1900 $\frac{8}{10}$  rods a mound rock and two pits in the bed of ravine, and on a side half dug out lot S. E. 30 rods, for 21<sup>st</sup> mile.

Thence S. at 300 rods a lake lot E 100 rods at 1224 cross fence at 1900 $\frac{8}{10}$  rods a mound rock and 3 pits for 22<sup>nd</sup> mile.

Thence S. at 656 rods cross road at 1220 rods cross fence at 1900 $\frac{8}{10}$  rods a mound and three pits for 23<sup>rd</sup> mile.

Thence South at 430 rods cross Terra Blanca Creek at 1235 rods cross fence, at 1900 $\frac{8}{10}$  rods a mound rock and three pits for 24<sup>th</sup> mile.

Thence S. at 1900 $\frac{8}{10}$  mound rock and 3 pits for 25<sup>th</sup> mile.

Thence South at 1140 rods cross South line Sur, 42 Block 14, from



which the S.W. Cor of Sur. 12 Blk  
14 brs West 11082 vrs. at 1900 $\frac{8}{10}$  vrs  
a mound rock and three pits for 26<sup>th</sup> mile  
Thence South at 700 vrs cross head of  
draw running N.E. at 1900 $\frac{8}{10}$  vrs. a  
mound rock and three pits for 27<sup>th</sup> mile  
Thence South at 735 vrs cross Spring  
Lake and Amarillo road, at 1545 vrs  
cross road at 1900 $\frac{8}{10}$  a mound rock  
and three pits for 28<sup>th</sup> mile.

Thence South at 900 vrs low basin  
head West 800 vrs, at 1900 $\frac{8}{10}$  vrs, a  
mound and three pits for 29<sup>th</sup> mile  
Thence South at 1900 $\frac{8}{10}$  vrs a large  
earth monument and 8 pits with  
stone in center, for the S.E. Cor of  
Deaf Smith County 18290.2 vrs West  
of the N.E. Cor of Castro County  
Beginning at the N.W. Cor of Castro  
County and the N.E. Cor of Pecos  
County, an earth monument with  
a stone in center marked N.W.C.  
inside circular trench 6 ft in diameter  
Thence West at 824 vrs to mound  
rock, three pits, and fig 29 trench for 29  
miles.

Thence West at 326 vrs cross XIT  
1 fence at 1900 $\frac{8}{10}$  vrs, a mound, rock  
three pits fig 28, trench.

Thence West at 774.4 the S.W. Cor of  
2 Cap League 446 brs N- 2878 vrs



2 the S.W. Cor of Gregg County School Land  
 lots No. 3186, vrs. at 1900 $\frac{8}{10}$  vrs a mound  
 rock and three pits Fig 27. trench.

3 Thence West at 1900 $\frac{8}{10}$  vrs a mound  
 rock, three pits and Fig 26 trench.

4 Thence West at 1900 $\frac{8}{10}$  vrs. a  
 mound rock, three pits and Fig 25  
 trench

5 Thence West at 1900 $\frac{8}{10}$  vrs a mound  
 rock three pits and Fig 24 trench.

6 Thence West at 1119 vrs the S.E. Cor  
 Cap League 444 lots No. 908 vrs at  
 1900 $\frac{8}{10}$  vrs, mound rock three pits and  
 Fig 23. trench.

7 Thence West at 204 vrs the S.E.  
 Cor of Cap League 447 lots South 4088  
 vrs, at 1900 $\frac{8}{10}$  a mound and three pits  
 and Fig 22 trench

8 Thence West at 1900 $\frac{8}{10}$  vrs a mound  
 rock three pits and Fig 21 trench.

9 Thence West at 419 vrs the N.E.  
 Cor of Capitol League 445 lots  
 No. 5929 vrs, at 1900 $\frac{8}{10}$  vrs a mound  
 three pits and a Fig 20 trench

10 Thence West at 1900 $\frac{8}{10}$  vrs a mound  
 three pits and Fig 19 trench.

11 Thence West at 1618 vrs cross  
 E line of Cap League 449 from which  
 the N.E. Cor of said league lots No. 942  
 vrs, at 1900 $\frac{8}{10}$  vrs a mound three pits  
 and Fig 18 trench.



- Thence West at 1900  $\frac{8}{10}$  rods a mound  
 12 three pits and Fig 17 trench.
- Thence West at 1900  $\frac{8}{10}$  rods a mound  
 13 three pits and Fig 16 trench.
- Thence West at 915 rods cross E line  
 of Cop League 450 from which the N.E.  
 Cor of Cop League 441 to N. 5959
- 14 rods at 1900  $\frac{8}{10}$  rods rock three pits and  
 Fig 15 trench
- 15 Thence West at 1900  $\frac{8}{10}$  rods a rock  
 three pits and fig 14 trench.
- 16 Thence West at 1890 rods cross fence  
 at 1900  $\frac{8}{10}$  rods a rock 3 pits and fig 13 trench
- Thence West at 213 rods cross East line  
 of Cop. League 451. from which the S.E.  
 Cor of said League bears South 4024  
 rods. The N.E. Cor of said league
- 17 bears North 976 at 1900  $\frac{8}{10}$  a rock  
 and three pits and Fig 12 trench.
- 18 Thence West at 1900  $\frac{8}{10}$  rods a rock 3 pits  
 and Fig 11 trench
- Thence West at 700 rods cross Creek  
 at 1500 rods cross Creek, at 1872 rods cross
- 19 creek at 1900  $\frac{8}{10}$  mound three pits and Fig 10 trench
- Thence West at 9 rods cross Creek, at 272  
 rods cross creek at 282 rods cross creek
- 20 at 1900  $\frac{8}{10}$  a rock three pits on East bank  
 of Creek. Thence West at 16 rods cross creek
- 21 at 160 rods cross Creek at 1400  $\frac{8}{10}$  a rock  
 three pits and fig 8 trench
- Thence West at 709 rods cross E line



- of Cap. League 453 from which the N.E. Cor of Cap. League 438 is N. 6010  
 22 vrs, at 1592 cross road, at 1900 $\frac{8}{10}$  vrs  
 rock three pits and Fig 7 trench.  
 Thence West at 1900 $\frac{8}{10}$  vrs a rock 3 pits  
 23 and Fig 6 trench  
 Thence West at 1900 $\frac{8}{10}$  vrs rock 3 pits  
 24 and Fig 5 trench.  
 Thence West at 9 vrs cross E line  
 of Cap League 454. from which the  
 N.E. Cor. of said League is N. 1028 vrs  
 25 at 1900 $\frac{8}{10}$  mound three pits and Fig 4 trench  
 Thence West at 1900 $\frac{8}{10}$  vrs rock 3 pits  
 26 and Fig 3 trench  
 Thence West at 1202 vrs cross E line  
 of Cap. League 455 from which the S.E.  
 Cor of said League is S. 3955 vrs  
 27 at 1900 $\frac{8}{10}$  Rock three pits and Fig 2 trench  
 Thence West at 1900 $\frac{8}{10}$  vrs rock three  
 28 pits and Fig 1 trench.  
 Thence West at 1900 $\frac{8}{10}$  vrs a large north  
 29 monument (on State line) inside large  
 circular trench 12 ft in diameter, 2 ft  
 Rock in center of mon. for the S.W. Cor  
 of Deaf Smith County and the N.W. Cor  
 of Parker County  
 Thence North at 1840 vrs cross deep  
 draw at 1900 $\frac{8}{10}$  vrs a large pile of  
 rocks for 1 $\frac{1}{2}$  mile.  
 Thence North at 900 vrs cross Iowa  
 Blanca Creek at 1900 $\frac{8}{10}$  vrs rock set in



ground for 2<sup>nd</sup> mile  
 Thence N. at 1900<sup>ths</sup> rock and two pits  
 for 3<sup>rd</sup> mile.

Thence North at 373 vrs the N.E. Cor of  
 Cap League 436 brs C, 4496 vrs  
 at 1900<sup>ths</sup> vrs rock set in the ground and two  
 pits for 4<sup>th</sup> mile.

Thence North at 1900<sup>ths</sup> vrs rock set in  
 ground and two pits for 5<sup>th</sup> mile

Thence N. at 1900<sup>ths</sup> vrs rock set in ground  
 and two pits for 6<sup>th</sup> mile

Thence N. at 1900<sup>ths</sup> vrs rock set in  
 ground and two pits for 7<sup>th</sup> mile

Thence N. at 1900<sup>ths</sup> vrs rock set in ground  
 and two pits for 8<sup>th</sup> mile.

Thence N. at 877 vrs cross South line  
 Cap League 417 from which the S.E.  
 Cor of same League brs C 4496 vrs  
 at 1900<sup>ths</sup> vrs rock and two pits for 9<sup>th</sup>  
 mile.

Thence North at 1900<sup>ths</sup> vrs rock set  
 in ground for 10<sup>th</sup> mile

Thence N. at 1900<sup>ths</sup> vrs rock set in  
 ground and two pits for 11<sup>th</sup> mile

Thence N. at 1900<sup>ths</sup> vrs rock set in  
 ground and two pits for 12<sup>th</sup> mile

Thence N. at 1900<sup>ths</sup> vrs rock set  
 in ground and two pits for 13<sup>th</sup> mile

Thence N. at 1382 vrs the N.E. Cor  
 of Cap League 400 brs C, 4494 vrs  
 at 1900<sup>ths</sup> Rock and two pits for 14<sup>th</sup> mile



Thence North at 100 vrs to 1100 vrs  
cross deep canyon at 1300 vrs pass  
large stone monument on edge of  
plains at 1900 fms vrs a large pile of  
rocks at foot of bluff cap rock mxd  
15. for 15<sup>th</sup> mile

Thence North at 335 vrs cross Ende  
and La Plata Road at 365 vrs cross  
fence at 1900 fms vrs rock and two pits for  
16<sup>th</sup> mile

Thence North at 1900 fms vrs a large pile  
of rocks for 17<sup>th</sup> mile

Thence North at 1572 vrs cross ravine  
at 1900 fms vrs rock and two pits for 18<sup>th</sup> mile

Thence North at 1900 fms vrs rock and two  
pits for 19<sup>th</sup> mile.

Thence North at 63 vrs the N.E. Cor  
of Cop League 383 fms E 4492 vrs  
at 1900 fms a pile of rocks for 20<sup>th</sup> mile.

Thence North at 1900 fms vrs rock in  
ground and two pits for 21<sup>st</sup> mile

Thence North at 1900 fms vrs pile rocks  
for 22<sup>nd</sup> mile.

Thence North at 1900 fms vrs rock in  
ground for 23<sup>rd</sup> mile

Thence North at 1900 fms vrs rock in  
ground for 24<sup>th</sup> mile.

Thence North at 1420 vrs cross  
ravine at 1900 fms vrs a pile of rocks  
for 25<sup>th</sup> mile.

Thence North at 115 vrs pass large



rock monument at 260 pass large  
stone monument, at 1468 w<sup>th</sup> gate  
at 1900  $\frac{1}{10}$  w<sup>th</sup> rock in ground marked 26.  
Thence North at 1900  $\frac{1}{10}$  w<sup>th</sup> rock set  
in ground marked 27.

Thence North at 229 w<sup>th</sup> the N.E.  
Cor of Cap League 362. to E 4490  
w<sup>th</sup>, at 1900  $\frac{1}{10}$  w<sup>th</sup> rock in ground marked  
28. Thence North at 1900  $\frac{1}{10}$  w<sup>th</sup> rock  
set in ground marked 29 for 29 mile  
Thence North at 1900  $\frac{1}{10}$  w<sup>th</sup> to place  
of beginning

Colman Witherspoon's Chain  
Iho's Jones & Besant  
Surveyed Sept 15 to Oct 6 1894

We Gile Baldwin and J. B. Girard  
Surveyors appointed by the Commissioners  
Court of Deaf Smith County to establish  
the boundary of said County, do hereby  
certify that the foregoing field-notes  
are true and correct and truly and  
correctly describe the marks both natural  
and artificial as they appear upon  
the ground and that said survey was  
actually made in the field according  
to law, and truly describes the boundary  
of Deaf Smith County

Witness our hands this 24<sup>th</sup> day  
of October A.D. 1894.

Gile Baldwin  
J. B. Girard



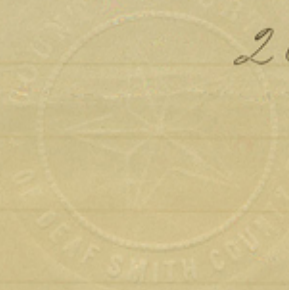
State of Texas  
County of Deaf Smith

I C. G. Witherspoon Clerk of the  
County Court of Deaf Smith County  
do hereby certify that the foregoing field  
notes of the Boundary line of Deaf  
Smith County as surveyed by Baldwin  
and Girard is a true and correct copy  
of the original now on file in my  
office, and that the same is duly  
recorded in Book 6 pages 3 to 39.

Witness whereof I hereunto  
set my hand and affix the  
seal of said Court

Done at La Plata Texas this  
26<sup>th</sup> day of October A.D. 1894

C. G. Witherspoon Clerk  
County Court Deaf Smith Co., Texas  
By F. B. Fuller deputy





①  
Deaf Smith County  
Boundaries

Filed in Gen'l Sd Office  
Nov. 1<sup>st</sup> 1894

*H. E. Smith*  
Chf Clerk

Examined and approved  
Nov. 3<sup>rd</sup> 1894

G. A. Beaumont

The Castro ldy has been approved  
therefore this County becomes a  
separate Sand District from  
and after Nov. 3<sup>rd</sup> 1894.

See large roll, Co Boundaries  
Deaf Smith. A Shell. Old  
County Maps.

Sketch in Oldham Boundaries