

D444

141



VIC BURGESS
COUNTY JUDGE

April 29, 1988

RECEIVED
MAY 11 1988

GENERAL LAND OFFICE

Mr. Herman Forbes
Texas General Land Office
Stephen F. Austin Building
1700 North Congress
Austin, TX 78701

Dear Mr. Forbes:

On the 2nd of February, 1987, Denton County Commissioners Court approved the reestablishment of the Dallas/Denton County Line in southern Denton County due to an error in surveying in the 1850's.

We would like formal approval and acceptance by your office of Denton County's minute orders. Another set of orders is attached for your review.

Please forward this information to my office at your earliest convenience.

Yours truly,

VIC BURGESS
County Judge

VB:ja

Enclosures
cc: Public Works

Counter 52448

Dwd
171



VIC BURGESS
COUNTY JUDGE

RECEIVED
MAY 12 1988

April 29, 1988

GENERAL LAND OFFICE

Mr. Herman Forbes
Texas General Land Office
Stephen F. Austin Building
1788 North Congress
Austin, TX 78701

Dear Mr. Forbes:

File No. County Boundary File 4B
DENTON County

Filed _____
By GARRY MAURO, Com'r
CBT 19 _____

On the 2nd of February, 1987, the Commissioners Court approved the reestablishment of the Dallas County line between Dallas and Denton County due to an error in surveying in 1856. We would like for you to review the order. Another copy of the order will be forwarded to your office of Denton County's minute book. Please forward this information to your office at your earliest convenience.

Yours truly,

VIC BURGESS
County Judge

VB:ja

Enclosures
cc: Public Works

0-444

RUTH TANSEY
PRECINCT 1
(817) 382-4508

SANDY JACOBS
PRECINCT 2
(817) 436-3721

MINUTE ORDER
NO. 04-87-37

LEE WALKER
PRECINCT 3
(817) 464-7410

DON HILL
PRECINCT 4
(817) 482-3413



VIC BURGESS, JUDGE
(817) 565-8585

DENTON COUNTY COMMISSIONERS COURT BUILDING 212 W. SYCAMORE, DENTON, TEXAS 76201 (817)383-8399 or (817) 383-8498

MINUTE ORDER

THE STATE OF TEXAS |
COUNTY OF DENTON |

BE IT KNOWN, That on this the 18th day of May, 1987, the Commissioners Court of Denton County, Texas convened in special session, at the temporary meeting place thereof in the Commissioners Courtroom, 212 W. Sycamore Street, Denton Texas, the following members of the Court being present, to-wit:

- Commissioner Ruth Tansey
- Commissioner Lee Walker
- Commissioner Sandy Jacobs
- Commissioner Don Hill

Judge Burgess, Presiding,
County Clerk, Marilyn Robinson, Recording;

AND AMONG OTHER PROCEEDINGS CONSIDERED BY SAID COURT WAS THE FOLLOWING ITEM:

MOTION By Commissioner Sandy Jacobs Seconded By Commissioner Ruth Tansey To :

Accept and adopt the revised field notes on the
Dallas & Denton County Line.

ATTEST:

MARILYN ROBINSON: County Clerk and Ex-Officio Clerk
of the Commissioners Court of Denton County, Texas

By: Marilyn Robinson



Counter 52450

NO. 04-18-10



VIC BUNDELL, JUDGE
(972) 208-2222

DENTON COUNTY COMMISSIONERS COURT BUILDING 1116 W. BUCHANE, DENTON TEXAS 76201 (972) 208-2222

File No. County Boundary File No. 4 B
DENTON
Comm. Ct. Minute Orders and Correspondence
Filed 5 May 19 88
By GARRY MAURO, Com't
C. D. Houston

Commissioner Don Hill
Commissioner Sandy Jacobs
Commissioner Lee Walker
Commissioner Rich Farney

Judge Burgess, Presiding;
County Clerk, Marilyn Robinson, Recording;

AND AMONG OTHER PROCEEDINGS CONSIDERED BY SAID COURT WAS THE FOLLOWING
ITEM:

NOTICE BY Commissioner Sandy Jacobs, Recorded by Commissioner Rich
Farney, No. _____

Accept and adopt the revised field notes on the
Dallas & Denton County Line.



WILLIAM ROBINSON, County Clerk and Ex-Officio Clerk
of the Commissioners Court of Denton County, Texas

Marilyn Robinson

2444

RUTH TANSEY
PRECINCT 1
(817) 382-4508

MINUTE ORDER
NO. 1-87-029

LEE WALKER
PRECINCT 3
(817) 464-7410

SANDY JACOBS
PRECINCT 2
(214) 436-3721



B. E. SWITZER
PRECINCT 4
(817) 482-3413

BUDDY COLE, JUDGE
401 W. HICKORY
(817) 565-8585

DENTON COUNTY COMMISSIONERS COURT BUILDING 212 W. SYCAMORE, DENTON, TEXAS 76201 (817)383-8399 or (817) 383-8498

MINUTE ORDER

RECEIVED
MAY 05 1988

THE STATE OF TEXAS ϕ
COUNTY OF DENTON ϕ

GENERAL LAND OFFICE

BE IT KNOWN, THAT ON THIS THE 2nd DAY OF February,
19 87, THE COMMISSIONERS COURT OF DENTON COUNTY, TEXAS, CONVENEED IN
REGULAR SESSION, AT THE TEMPORARY MEETING PLACE THEREOF IN THE
COMMISSIONERS COURTROOM, 212 W. SYCAMORE STREET, DENTON, TEXAS,
THE FOLLOWING MEMBERS OF THE COURT BEING PRESENT, TO-WIT:

Commissioner Ruth Tansey
Commissioner Lee Walker, Acting Chairman in the absence of Judge Burgess
Commissioner Don Hill
Commissioner Sandy Jacobs
(County Clerk-Marilyn Robinson)

AND AMONG OTHER PROCEEDINGS CONSIDERED BY SAID COURT WAS THE
FOLLOWING ITEM:

MOTION BY Commissioner Jacobs SECONDED BY Commissioner Tansey
_____ TO approve the re-establishment of the original County
Line surveyed and recorded by Mr. Don Jackson & Lichliter/Jameson with
the following conditions:

1. All contracts and agreements are fullfilled.
2. The General Land Office in Austin accepts this project for filing purposes.
3. That Dallas County be the primary source of all record changes between counties, with a method for these changes to be determined by the Voter Registrars and County Clerks of all counties concerned.

ATTEST:

MARILYN ROBINSON: County Clerk and Ex- Offico Clerk
of the Commissioners Court of Denton County, Texas

BY: _____

NOTARY

Linda Ann Burgess
Denton County 5-12-1990

5
12 90

Count 52452

WILLY TANSLEY
PRECINCT 1
(917) 382-4608
SANDY JACOBS
PRECINCT 2
(917) 436-3721

MINUTE ORDER
NO. 1-27-88



DENTON COUNTY COMMISSIONERS COURT

File No. County Boundary File 4B
DENTON County

Filed _____ 19 ____
By GARRY MAURO, Com'r
GM

RECEIVED
MAY 02 1988

GENERAL LAND OFFICE

BE IT KNOWN THAT ON this 2nd DAY OF February 1988, THE COMMISSIONERS COURT OF DENTON COUNTY, TEXAS, CONVENED IN REGULAR SESSION, AT THE TEMPORARY MEETING PLACE THEREON IN THE COMMISSIONERS COURTHOUSE, 212 W. SYCAMORE STREET, DENTON, TEXAS, THE FOLLOWING MEMBERS OF THE COURT BEING PRESENT, TO-WIT:

Commissioner Ruth Tansley
Commissioner Lee Walker, Acting Chairman in the absence of Judge Burgess
Commissioner Don Hill
Commissioner Sandy Jacobs
(County Clerk-Marilyn Robinson)

AND AMONG OTHER PROCEEDINGS CONSIDERED BY SAID COURT WAS THE FOLLOWING ITEM:

MOTION BY Commissioner Jacobs, SECONDED BY Commissioner Tansley TO approve the re-establishment of the original County line surveys and recorded by Mr. Don Jackson & Lichstein/Jackson with the following conditions:

1. All contracts and agreements are fulfilled.
2. The General Land Office in Austin accepts this project for filing purposes.
3. That Dallas County be the primary source of all record changes between counties, with a method for these changes to be determined by the Voter Registrars and County Clerks of all counties concerned.

ATTEST:
Marilyn Robinson, County Clerk and Ex-Officio Clerk of the Commissioners Court of Denton County, Texas

Charles O. Taylor
County Clerk
MAY 19 1988

MINUTE ORDER

NO. 04-87-37

RUTH TANSEY
PRECINCT 1
(817) 382-4508

LEE WALKER
PRECINCT 3
(817) 464-7410

SANDY JACOBS
PRECINCT 2
(214) 436-3721

DON HILL
PRECINCT 4
(817) 482-3413



VIC BURGESS, JUDGE
(817) 565-8585

DENTON COUNTY COMMISSIONERS COURT BUILDING 212 W. SYCAMORE, DENTON, TEXAS 76201 (817)383-8399 or (817) 383-8498

MINUTE ORDER

THE STATE OF TEXAS |

COUNTY OF DENTON |

BE IT KNOWN, That on this the 18th day of May, 1987, the Commissioners Court of Denton County, Texas convened in special session, at the temporary meeting place thereof in the Commissioners Courtroom, 212 W. Sycamore Street, Denton Texas, the following members of the Court being present, to-wit:

Commissioner Ruth Tansey
Commissioner Lee Walker
Commissioner Sandy Jacobs
Commissioner Don Hill

Judge Burgess, Presiding,
County Clerk, Marilyn Robinson, Recording;

AND AMONG OTHER PROCEEDINGS CONSIDERED BY SAID COURT WAS THE FOLLOWING ITEM:

MOTION By Commissioner Sandy Jacobs Seconded By Commissioner Ruth Tansey To :

Accept and adopt the revised field notes on the
Dallas & Denton County Line.

ATTEST:

MARILYN ROBINSON: County Clerk and Ex-Officio Clerk
of the Commissioners Court of Denton County, Texas

By: Marilyn Robinson



By: Garry Mauro
of the Commission of the County of Denton
COUNTY CLERK
COUNTY CLERK



IN SENATE
JUNE 8 1887
COUNTY OF DENTON TEXAS
COUNTY CLERK

IN SENATE
JUNE 8 1887
COUNTY OF DENTON TEXAS
COUNTY CLERK

IN SENATE
JUNE 8 1887
COUNTY OF DENTON TEXAS
COUNTY CLERK

File No. County Bdy. Line No. 4
Denton County
Commissioners Court Order
Filed June 8 19 87
By GARRY MAURO, Com'r
R.V. Molina

COUNTY OF DENTON
JUNE 8 1887
COUNTY CLERK



FIELD NOTE DESCRIPTION OF THE NORTH DALLAS COUNTY LINE

BEGINNING at a brass disc in concrete set for the Northeast corner of Dallas County, said monument being located in a cultivated field 5 chains South of the South boundary line of the J.D. Shelby Survey in the Nathaniel Atterberry Survey, and on the South line of Collin County;

THENCE North 89° 29' 55" West at 500.5 varas the Northeast line of the E.M. Price Survey 881.2 varas South 45° East of its North corner;

THENCE continue North 89° 29' 55" West at 520.1 varas this point being 118.8 varas South of a lead alloy pipe for the inside ell corner of the N. Atterberry Survey and the Southwest corner of the J.D. Shelby Survey;

THENCE continue North 89° 29' 55" West at 1579.5 varas east branch Cottonwood Creek; at 1589.9 varas west branch Cottonwood Creek; at 1744.4 varas the Northwest line of the E.M. Price Survey and the Southeast line of the W. Sutton Survey and the Southeast line of the Aaron West Survey; said point being North 45° East a distance of 48.3 varas from the most Westerly corner of the E.M. Price Survey and North 45° East 48.3 varas from the South corner of said Sutton Survey and North 45° East 210.3 varas from the South corner of said West Survey;

THENCE continue North 89° 29' 55" West at 1812.8 varas the Southwest line of said Sutton Survey, said County Line being North 45° West 48.4 varas from the South corner of said Sutton Survey;

THENCE continue North 89° 29' 55" West at 1900.8 varas 1st Mile Marker set in a pasture; at 2042.3 varas Pleasant Valley Road and the common line of Aaron West and G. de los Santos Surveys said point being 211 varas North 45° West from the East corner of said de los Santos Survey and the North 45° West 211 varas from the South corner of said West Survey;

THENCE continue North 89° 29' 55" West at 3502.1 varas the East line of the R.D. Newman Survey 1862.1 varas South 2° 48' West from its Northeast corner; at 3618.3 varas the centerline of Sachse Road and the Northwest line of the G. de los Santos Survey said County Line being South 45° West 1111.1 varas from its North corner;

THENCE continue North 89° 29' 55" West at 3801.6 varas the 2nd Mile Marker set in a pasture; at 4285.8 varas the East branch of Muddy Creek; at 4749.5 varas Muddy Creek; at 5702.4 varas the 3rd Mile Marker set in a cultivated field; at 6389.0 varas the West line of said Newman Survey and the East line of the M.L. Swing Survey said County Line being 1875.8 varas South 2° 48' West from the said Newman's Northwest corner and South 20.8 varas of said Swing's Northeast corner;

THENCE continue North 89° 29' 55" West at 6812.1 varas the West line of M.L. Swing and the East line of James Cumba Survey, said County Line being South 16.9 varas of said Swing's Northwest corner and 220.1 varas North of said Cumbas Southeast corner;

RECEIVED
APR 10 1987
GENERAL LAND OFFICE

Counter 52456

D-279

FIELD NOTE DESCRIPTION OF THE NORTH DALLAS COUNTY LINE

BEGINNING at a brass disc in concrete set for the Northeast corner of Dallas County, said monument being located in a cultivated field 5 chains South of the South boundary line of the J.O. Shelby Survey in the National Atterbury Survey, and on the South line of Collin County;

THENCE North 89° 29' 52" West at 500.5 varas the Northeast line of the E.M. Price Survey 881.5 varas South 45° East of its North corner;

THENCE continue North 89° 29' 52" West at 520.1 varas this point being 118.8 varas South of a lead alloy pipe for the inside ell corner of the N. Atterbury Survey and the Southwest corner of the J.O. Shelby Survey;

THENCE continue North 89° 29' 52" West at 1579.5 varas east branch Cottonwood Creek; at 1589.9 varas west branch Cottonwood Creek; at 1744.4 varas the Northwest line of the E.M. Price Survey and the Southeast line of the W. Sutton Survey and the Southeast line of the Aaron West Survey; said point being North 45° East a distance of 48.3 varas from the most Westerly corner of the E.M. Price Survey and North 45° East 48.3 varas from the South corner of said Sutton Survey and North 45° East 210.3 varas from the South corner of said West Survey;

THENCE continue North 89° 29' 52" West at 1812.8 varas the Southwest line of said Sutton Survey, said County line being North 45° West 48.4 varas from the South corner of said Sutton Survey;

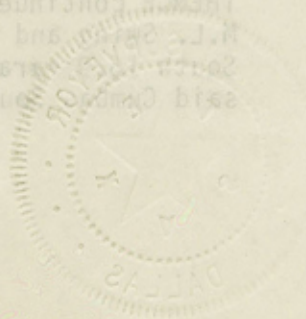
THENCE continue North 89° 29' 52" West at 1900.8 varas 1st Mile Marker set in a pasture, at 2042.3 varas Pleasant Valley Road and the common line of Aaron West and G. de los Santos Surveys said point being 211 varas North 45° West from the East corner of said de los Santos Survey and the North 45° West 211 varas from the South corner of said West Survey;

THENCE continue North 89° 29' 52" West at 3502.1 varas the East line of the R.D. Newman Survey 1862.1 varas South 2° 48' West from its Northeast corner; at 3618.3 varas the centerline of Sachse Road and the Northwest line of the G. de los Santos Survey said County line being South 45° West 111.1 varas from its North corner;

THENCE continue North 89° 29' 52" West at 3801.6 varas the 2nd Mile Marker set in a pasture; at 4285.8 varas the East branch of Muddy Creek; at 4749.5 varas Muddy Creek; at 5702.4 varas the 3rd Mile Marker set in a cultivated field; at 6389.0 varas the West line of said Newman Survey and the East line of the M.L. Swing Survey said County line being 1875.8 varas South 2° 48' West from the said Newman's Northwest corner and South 20.8 varas of said Swing's Northeast corner;

THENCE continue North 89° 29' 52" West at 6812.1 varas the West line of M.L. Swing and the East line of James Gamba Survey, said County line being 2071.5 varas of said Swing's Northeast corner and 220.1 varas North of said Gamba's Northeast corner;

RECEIVED
APR 1 1987
GENERAL LAND OFFICE



Counter 52457

THENCE continue North 89° 29' 55" West at 7314.81 varas a brass cap in concrete on the East right-of-way line of SH 78; at 7384.83 varas brass cap in concrete on the West right-of-way line of SH 78; at 7414.6 varas the centerline of the Atchison, Topeka and Santa Fe Railroad, at 7603.2 varas the 4th Mile Marker in a cultivated field; at 7787.3 varas the West line James Cumba Survey 248.3 varas North of its Southwest corner and also being in the East line of the E. Sachse Survey also 248.3 varas North of its Southeast corner;

THENCE continue North 89° 29' 55" West at 8737.3 varas the West line of E. Sachse Survey, said County Line being 255.0 varas north of its southwest corner and also the East line of the D. Herring Survey 255.0 varas North of its Southeast corner;

THENCE continue North 89° 29' 55" West at 9504.0 varas the 5th Mile Marker set in a site of future development; at 10,638.0 varas the West line of the D. Herring Survey 268.0 varas North of its Southwest corner and also the East line of the H.L. Douglas Survey 268.0 varas North of its Southeast corner;

THENCE continue North 89° 29' 55" West at 11,404.8 varas the 6th Mile Marker set in timber; at 11,422.8 varas a branch, at 11,774.2 varas the West line of H.L. Douglas and the East line E.H. Dodd Survey said County Line being 277.9 varas North of said Douglas' Southwest corner and 576.0 varas North of said Dodd's Southeast corner;

THENCE continue North 89° 29' 55" West at 12,398.1 varas Rowlett Creek; at 13,305.6 varas the 7th Mile Marker set in a cultivated field; at 13,658.4 varas the West line of E.H. Dodd and the East line of the John McCollough Survey, said County Line being 592.5 varas North of Dodd's Southwest corner and 290.0 varas North of said J. McCollough's Southeast corner;

THENCE continue North 89° 29' 55" West at 14,443.0 varas the West line of John McCollough Survey and the East line of Henry McCollough Survey, said County Line being 300.2 varas North of the Southwest corner of said J. McCollough Survey and 300.2 varas North of the Southeast corner of said H. McCollough Survey;

THENCE continue North 89° 29' 55" West at 15,206.4 varas the 8th Mile Marker set in a pasture, at 16,362.5 varas the West line of H. McCollough Survey and the east line of the C.K. Vance Survey and also the centerline of Shiloh Road, said County Line being 334.6 varas North of the Southwest corner of H. McCollough Survey and 334.6 varas North of the Southeast corner of the C.K. Vance Survey;

THENCE continue North 89° 29' 55" West at 17,107.2 varas the north back of curb on Lookout Drive and the 9th Mile Marker set; at 18,259.0 varas centerline of Jupiter Road also being the West line of the C.K. Vance Survey and the East line of the T. Vance Survey, said County Line being 347.0 varas North of the Southwest corner of the C.K. Vance Survey and North 347.0 varas from the Southeast corner of the T. Vance Survey;

RECEIVED
APR 11 1987
GENERAL LAND OFFICE

Counter 52458

D-279

THESE continue North 89° 29' 55" West at 7314.81 varas a brass cap in concrete on the East right-of-way line of SH 78; at 7384.83 varas brass cap in concrete on the West right-of-way line of SH 78; at 7414.6 varas the centerline of the Atchison, Topeka and Santa Fe Railroad, at 7603.2 varas the 4th Mile Marker in a cultivated field; at 7787.3 varas the West line James Cumba Survey 248.3 varas North of its southwest corner and also being in the East line of the E. Sachse Survey also 248.3 varas North of its Southeast corner;

THESE continue North 89° 29' 55" West at 8737.3 varas the West line of E. Sachse Survey, said County Line being 252.0 varas North of its southwest corner and also the East line of the D. Herring Survey 252.0 varas North of its Southeast corner;

THESE continue North 89° 29' 55" West at 9504.0 varas the 5th Mile Marker set in a site of future development; at 10,838.0 varas the West line of the D. Herring Survey 288.0 varas North of its Southwest corner and also the East line of the H.L. Douglas Survey 288.0 varas North of its Southeast corner;

THESE continue North 89° 29' 55" West at 11,404.8 varas the 6th Mile Marker set in timber; at 11,422.8 varas a branch, at 11,774.2 varas the West line of H.L. Douglas and the East line E.H. Dobb Survey said County Line being 277.9 varas North of said Douglas' Southwest corner and 278.0 varas North of said Dobb's Southeast corner;

THESE continue North 89° 29' 55" West at 12,398.1 varas Rowlett Creek; at 13,302.6 varas the 7th Mile Marker set in a cultivated field; at 13,684.4 varas the West line of E.H. Dobb and the East line of the John McCollough Survey, said County Line being 292.2 varas North of Dobb's Southwest corner and 290.0 varas North of said McCollough's Southeast corner;

THESE continue North 89° 29' 55" West at 14,443.0 varas the West line of John McCollough Survey and the East line of Henry McCollough Survey, said County Line being 300.2 varas North of the Southwest corner of said J. McCollough Survey and 300.2 varas North of the Southeast corner of said H. McCollough Survey;

THESE continue North 89° 29' 55" West at 15,206.4 varas the 8th Mile Marker set in a pasture, at 16,362.2 varas the West line of H. McCollough Survey and the East line of the C.K. Vance Survey and also the centerline of Shiloh Road, said County Line being 334.6 varas North of the southwest corner of H. McCollough Survey and 334.6 varas North of the Southeast corner of the C.K. Vance Survey;

THESE continue North 89° 29' 55" West at 17,107.2 varas the north back of the Outlook Drive and the 9th Mile Marker set; at 18,259.0 varas the centerline of Jupiter Road also being the West line of the C.K. Vance Survey and the East line of the T. Vance Survey, said County Line being 347.0 varas North of the Southwest corner of the C.K. Vance Survey and 347.0 varas from the Southeast corner of the T. Vance Survey;

RECEIVED
APR 11 1987
GENERAL LAND OFFICE



counter 52459

THENCE continue North 89° 29' 55" West at 19,008.00 varas the 10th Mile Marker set in timber in the Spring Creek bottom; at 19,099.8 varas Spring Creek; at 20,146.26 varas a P.K. nail in asphalt paving for the East right-of-way line of Highway 5 (Greenville Avenue); at 20,167.9 varas the West line of the T. Vance Survey and the East line of the J.C. Vance Survey, said County Line being 366.7 varas North of T. Vance's Southwest corner and North 366.7 varas from the Southeast corner of J.C. Vance;

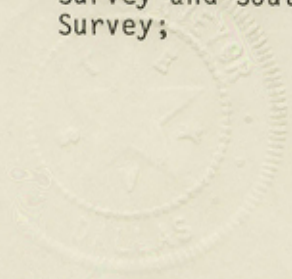
THENCE continue North 89° 29' 55" West at 20,189.46 varas a brass cap in concrete for the West right-of-way line for Highway 5 (Greenville Avenue), at 20,908.8 varas the 11th Mile Marker set in a cultivated field; at 21,381.4 varas the centerline of the Southern Pacific Railroad; at 21,401.06 varas a brass cap in concrete set on the East right-ofway line of U.S. Highway No. 75 (Central Expressway), at 21,515.71 varas a brass cap in concrete set on the West right-of-way line of U.S. Highway No. 75 (Central Expressway); at 22,068.7 varas the West line of the J.C. Vance Survey and the East line of the R. Coupland Survey said County Line being North 383.4 varas of the Southwest corner of said J. Vance Survey and North 383.4 varas from the Southeast corner of said Coupland Survey;

THENCE continue North 89° 29' 55" West at 22,225.5 varas Campbells Branch (now called Prairie Creek); at 22,809.6 varas the 12th Mile Marker set on the West property line, more or less, of 400 Ridgeview Street, said marker falling 1.9 varas North of a sidewalk that parallels said Ridgeview; at 23,019.1 varas the West line of the R. Coupland Survey and East line of the E.T. Myers Survey said County Line being 391.7 varas North of the Southwest corner of said Coupland Survey and the Southeast corner of said Myers Survey;

THENCE continue North 89° 29' 55" West at 23,523.7 varas again cross Campbells Branch; at 23,969.5 varas the West line of E.T. Myers Survey and the East line of the McKinney and Williams Survey said County Line being North 413.4 varas of the Southwest corner of said Myers Survey and 70.4 varas South of the most easterly Northeast corner of said McKinney and Williams Survey;

THENCE continue North 89° 29' 55" West at 24,399.7 varas the centerline of the Atchison, Topeka and Santa Fe Railroad; at 24,722.64 varas the 13th Mile Marker set in the West property line of 112 Mill Springs Road; at 25,872.7 varas the West line of the McKinney and Williams Survey and the East line of the J. Clay Survey and County Line being 53.7 varas South of the Northwest corner of said McKinney and Williams Survey and 430.1 varas North of the Southeast corner of said Clay Survey;

THENCE continue North 89° 29' 55" West at 26,627.40 varas the 14th Mile Marker set 1.4 varas West of a concrete parking lot; at 27,801.6 varas the West line of J. Clay Survey and the East line of T. Vager Survey, said County Line being 447.0 varas North of the Southwest corner of said Clay Survey and South 194.0 varas South of the Northeast corner of said Vager Survey;



RECEIVED
APR 11 1981
GENERAL LAND OFFICE

THESE continue North 89° 29' 52" West at 20,008.00 varas the 10th Mile
Marker set in timber in the Spring Creek bottom; at 19,993.8 varas Spring
Creek; at 20,146.56 varas a P.K. nail in asphalt paving for the East right-
of-way line of Highway 5 (Greenville Avenue); at 20,187.9 varas the West
line of the T. Vance Survey and the East line of the J.C. Vance Survey;
said county line being 366.7 varas North of T. Vance's southwest corner and
North 366.7 varas from the Southeast corner of J.C. Vance;

THESE continue North 89° 29' 52" West at 20,189.46 varas a brass cap in
concrete for the West right-of-way line for Highway 5 (Greenville Avenue);
at 20,908.8 varas the 11th Mile Marker set in a cultivated field; at
21,381.4 varas the centerline of the Southern Pacific Railroad; at
21,401.08 varas a brass cap in concrete set on the East right-of-way line of
U.S. Highway No. 75 (Central Expressway); at 21,515.71 varas a brass cap in
concrete set on the West right-of-way line of U.S. Highway No. 75 (Central
Expressway); at 22,038.7 varas the West line of the J.C. Vance Survey and
the East line of the R. Coupland Survey said County Line being North 383.4
varas of the southwest corner of said J. Vance Survey and North 383.4 varas
from the southeast corner of said Coupland Survey;

THESE continue North 89° 29' 52" West at 22,525.5 varas Campbell's Branch
(now called Prairie Creek); at 22,809.6 varas the 12th Mile Marker set on
the West property line, more or less; of 400 Ridgeway Street; said marker
falling 1.9 varas North of a sidewalk that parallels said Ridgeway; at
23,019.1 varas the West line of the R. Coupland Survey and East line of the
E.T. Myers Survey said County Line being 391.7 varas North of the southwest
corner of said Coupland Survey and the southeast corner of said Myers
Survey;

THESE continue North 89° 29' 52" West at 23,528.7 varas again cross
Campbell's Branch; at 23,969.5 varas the West line of E.T. Myers Survey and
the East line of the McKinney and Williams Survey said County Line being
North 413.4 varas of the southwest corner of said Myers Survey and 70.4
varas South of the most easterly Northeast corner of said McKinney and
Williams Survey;

THESE continue North 89° 29' 52" West at 24,399.7 varas the centerline of
the Abbeville, Topoka and Santa Fe Railroad; at 24,725.64 varas the 13th
Mile Marker set in the West property line of 112 Mill Springs Road; at
25,878.7 varas the West line of the McKinney and Williams Survey and the
East line of the J. Clay Survey and County Line being 53.7 varas South of
the Northwest corner of said McKinney and Williams Survey and 430.1 varas
North of the Southeast corner of said Clay Survey;

THESE continue North 89° 29' 52" West at 26,627.40 varas the 14th Mile
Marker set 1.4 varas West of a concrete parking lot; at 27,801.6 varas the
West line of J. Clay Survey and the East line of T. Vager Survey; said
County Line being 447.0 varas North of the southwest corner of said Clay
Survey and South 194.0 varas South of the Northeast corner of said Vager

RECEIVED
APR 11 1987
GENERAL LAND OFFICE



52461
Counter 52461

THENCE continue North 89° 29' 55" West at 28,455.12 varas the 15th Mile Marker set in turf area of an apartment complex; at 28,918.6 varas the West line of T. Vager Survey and the East line of the John W. Overton Survey, said County Line being South 184.3 varas of said Vagers Northwest corner and South 184.3 varas of the Northeast corner of said Overton Survey;

THENCE continue North 89° 29' 55" West; at 29,525.3 varas the centerline of the St. Louis and Southwestern Railroad; at 29,656.7 varas Spanky's Branch, at 30,391.44 varas the 16th Mile Marker in a median in the center of McCallum Blvd., at 30,874.0 varas the McCamy Branch; at 31,258.6 varas the West line of the John W. Overton Survey and the East line of the A. Danks Survey, said County Line being South 163.8 varas of the Northwest corner of the said Overton Survey and 1458.2 varas South of the Northeast corner of said Danks Survey;

THENCE continue North 89° 29' 55" West, at 31,588.6 varas a brass cap in concrete set on the East right-of-way line of S.H. No. 289 (Preston Road); at 31,635.00 varas an "X" cut in concrete paving on the west rightof-way line of S.H. No. 289 (Preston Road); at 31,869.6 varas the West line of the A. Danks Survey and the East line of the J. Mounts Survey, said County Line being 1453.6 varas South of said Dank's Northwest corner and South 1453.6 varas from said Mounts Survey Northeast corner;

THENCE continue North 89° 29' 55" West; at 32,313.60 varas the 17th Mile Marker set in a grass field; at 32,710.5 varas White Rock Creek; at 33,034.6 varas the West line of the J. Mounts Survey and the East line of the B.C. Myers Survey, said County Line being 1443.4 varas South of J. Mounts' Northwest corner and 208.4 varas South of Myers Northeast Corner; at 33,644.6 varas the West line of the B.C. Myers Survey and the East line of the Eli Shepherd Survey, said County Line being 203.1 varas South of said Myers Northwest corner and South 203.1 varas from the Northeast corner of said Shepherd Survey;

THENCE continue North 89° 29' 55" West; at 34,214.40 varas the 18th Mile Marker set in a grass area north of a subdivision on the rear of a commercial tract; at 34,891.6 varas the West line of the E. Shepherd Survey and the east line of the Drake Survey, said County Line being 192.2 varas South of said Shepherd's Northwest corner, and 24.2 varas North of said Drakes most southerly Southeast corner;

THENCE continue North 89° 29' 55" West; at 35,064.8 varas the West line of the Drake Survey and the East line of the E. Allen Survey, said County Line being 25.5 varas North of the most southerly Southwest corner of said Drake survey and 25.5 varas North of the most southerly Southeast corner of said Allen Survey;

THENCE continue North 89° 29' 55" West; at 35,534.6 varas the West line of the E. Allen Survey and the East line of the William Kingwell Survey, said County Line being 29.6 varas North of the most southerly Southwest corner of said Allen Survey and 436.6 varas South of the Northeast corner of said Kingwell Survey;

RECEIVED

APR 11 1987

-4-

GENERAL LAND OFFICE

THEHC continue North 89° 29' 52" West at 28,452.12 varas the 15th Mile
Marker set in turf area of an apartment complex; at 28,918.6 varas the West
line of T. Vager Survey and the East line of the John W. Overton Survey,
said County line being South 184.3 varas of said Vager Northwest corner
and South 184.3 varas of the Northeast corner of said Overton Survey;

THEHC continue North 89° 29' 52" West; at 29,528.3 varas the centerline of
the St. Louis and Southwestern Railroad; at 29,528.7 varas Spanky's Branch,
at 30,391.44 varas the 15th Mile Marker in a median in the center of
McCain Blvd., at 30,874.0 varas the McCay Branch; at 31,228.6 varas the
West line of the John W. Overton Survey and the East line of the A. Banks
Survey, said County line being South 183.8 varas of the Northwest corner of
the said Overton Survey and 148.2 varas South of the Northeast corner of
said Banks Survey;

THEHC continue North 89° 29' 52" West, at 31,588.6 varas a brass cap in
concrete set on the East right-of-way line of S.H. No. 289 (Preston Road);
at 31,635.00 varas an "X" cut in concrete paving on the west right-of-way
line of S.H. No. 289 (Preston Road); at 31,869.6 varas the West line of the
A. Banks Survey and the East line of the J. Mounts Survey, said County
line being 143.6 varas South of said Bank's Northwest corner and South
143.6 varas from said Mounts Survey Northeast corner;

THEHC continue North 89° 29' 52" West; at 32,313.60 varas the 17th Mile
Marker set in a grass field; at 32,710.5 varas White Rock Creek; at
33,034.6 varas the West line of the J. Mounts Survey and the East line of
the B.C. Myers Survey, said County line being 144.4 varas South of J.
Mounts' Northwest corner and 508.4 varas South of Myers Northeast corner;
at 33,644.6 varas the West line of the B.C. Myers Survey and the East line
of the E.H. Shepherd Survey, said County line being 503.1 varas South of
said Myers Northwest corner and South 503.1 varas from the Northeast corner
of said Shepherd Survey;

THEHC continue North 89° 29' 52" West; at 34,214.40 varas the 18th Mile
Marker set in a grass area north of a subdivision on the rear of a commer-
cial tract; at 34,891.6 varas the West line of the E. Shepherd Survey and
the East line of the Drake Survey, said County line being 192.2 varas South
of said Shepherd's Northwest corner, and 24.2 varas North of said Drake's
most southerly Southeast corner;

THEHC continue North 89° 29' 52" West; at 35,064.8 varas the West line of
the Drake Survey and the East line of the E. Allen Survey, said County line
being 25.2 varas North of the most southerly Southwest corner of said Drake
Survey and 25.2 varas North of the most southerly Southeast corner of said
Allen Survey;

THEHC continue North 89° 29' 52" West; at 35,234.6 varas the West line of
the E. Allen Survey and the East line of the William Kinwell Survey, said
County line being 29.6 varas North of the most southerly Southwest corner
of said Allen Survey and 436.6 varas South of the Northeast corner of said
Kinwell Survey;

RECEIVED
APR 11 1987
GENERAL LAND OFFICE



THENCE continue North 89° 29' 55" West; at 36,117.06 varas to a brass cap set in concrete parking lot for the Southwest corner of Collin County and the Southeast corner of Denton County, said marker being 5.40 varas South and 17.8 varas East of the most westerly corner of a red roofed, stucco building, said building being called the Trinity Oaks Building in a strip shopping center;

THENCE continue North 89° 29' 55" West; at 36,219.6 varas the 19th Mile Marker set 1.1 varas North of a 6 foot concrete privacy wall in a grass field; at 36,485.0 varas the West line of William Kingwell and the East line of the Eli Shepherd Survey, said County Line being 428.3 varas South of said Kingwell's Northwest corner and 243.3 varas South of said Shepherd's Northeast corner;

THENCE continue North 89° 29' 55" West; at 37,085.0 varas the West line of the E. Shepherd Survey, said County Line being 238.1 varas South of said Shepherd's Northwest corner; at 37,321.1 varas the East line of the Mathias Ward Survey, said County Line being South 272.3 varas of Ward's Northeast corner;

THENCE continue North 89° 29' 55" West; at 37,421.1 varas the West line of the M. Ward Survey and the East line of the William Row Survey, said County Line being South 271.4 varas from said Ward's Northwest corner and South 271.4 varas of W. Row's Northeast corner;

THENCE continue North 89° 29' 55" West; at 38,018.5 varas the 20th Mile Marker set two feet east of a sidewalk paralleling Briar Hill Drive; at 38,371.5 varas the West line of William Row Survey and the East line of the Levi Nobles Survey, said County Line being 263.1 varas South of said Row's Northwest corner and South 263.1 varas from said Nobles' Northeast corner;

THENCE continue North 89° 29' 55" West; at 39,560.50 varas the centerline of the St. Louis and San Francisco Railroad; at 39,616.5 varas the West line of Levi Nobles Survey and the East line of the John Jackson Survey, said County Line being South 252.2 varas from said Nobles' Northwest corner and South 602.2 varas from the Northeast corner of said Jackson Survey;

THENCE continue North 89° 29' 55" West; at 40,011.12 the 21st Mile Marker set 21.6 varas north of a four foot sidewalk and 2.3 varas east of another four foot sidewalk at the northeast corner of the intersection of Colonial Place and Versailles Drive; at 41,476.2 varas the West line of the John Jackson Survey and the East line of a 160 acre Survey in the name of John Jackson, said County Line being South 1134.8 varas from John Jackson's Northwest corner and South 226.8 varas from the Northeast corner of said 160 acre Survey in the name of John Jackson;

THENCE continue North 89° 29' 55" West at 41,700.6 varas the 22nd Mile Marker set on the West right-of-way line, more or less, of Gold Rush Lane, north of Sutters Mill Drive; at 42,426.2 varas the West line of the J. Jackson 160 acre Survey, and the East line of the Benjamin Baccus Survey, said County Line being South 218.5 varas from the Northwest corner of said 160 acres and 218.5 varas South of an interior well corner of said Baccus Survey;

APR 11 1981
GENERAL LAND OFFICE

0-279

County 52464

THENCE continue North 89° 29' 52" West, at 38,117.06 varas to a brass cap set in concrete parking lot for the southwest corner of Coffin County and the southeast corner of Denton County, said marker being 5.40 varas South and 17.8 varas East of the most westerly corner of a red roofed, stucco building, said building being called the Trinity Oaks Building in a strip shopping center;

THENCE continue North 89° 29' 52" West, at 36,219.6 varas the 19th Mile Marker set 1.1 varas North of a 6 foot concrete privacy wall in a grass field; at 36,485.0 varas the West line of William Kingwell and the East line of the E.H. Shepherd survey, said County line being 459.3 varas South of said Kingwell's Northwest corner and 243.3 varas South of said Shepherd's Northeast corner;

THENCE continue North 89° 29' 52" West; at 37,085.0 varas the West line of the E. Shepherd survey, said County line being 238.1 varas South of said Shepherd's Northwest corner; at 37,321.1 varas the East line of the Mathias Ward survey, said County line being South 272.3 varas of Ward's Northeast corner;

THENCE continue North 89° 29' 52" West; at 37,421.1 varas the West line of the M. Ward survey and the East line of the William Row survey, said County line being South 271.4 varas from said Ward's Northwest corner and South 271.4 varas of M. Row's Northeast corner;

THENCE continue North 89° 29' 52" West; at 38,018.5 varas the 20th Mile Marker set two feet east of a sidewalk paralleling Briar Hill Drive; at 38,371.5 varas the West line of William Row survey and the East line of the Levi Nobles survey, said County line being 583.1 varas South of said Row's Northwest corner and South 583.1 varas from said Nobles' Northeast corner;

THENCE continue North 89° 29' 52" West; at 39,560.50 varas the centerline of the St. Louis and San Francisco Railroad; at 39,618.5 varas the West line of Levi Nobles survey and the East line of the John Jackson survey, said County line being South 525.2 varas from said Nobles' Northwest corner and South 602.2 varas from the Northeast corner of said Jackson survey;

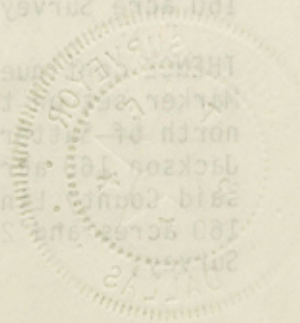
THENCE continue North 89° 29' 52" West; at 40,011.15 the 21st Mile Marker set 21.6 varas north of a four foot sidewalk and 2.3 varas east of another four foot sidewalk at the northeast corner of the intersection of Colonial Place and Versailles Drive; at 41,476.2 varas the West line of the John Jackson survey and the East line of a 160 acre survey in the name of John Jackson, said County line being South 1134.8 varas from John Jackson's Northwest corner and South 226.8 varas from the Northeast corner of said 160 acre survey in the name of John Jackson;

THENCE continue North 89° 29' 52" West at 41,700.8 varas the 22nd Mile Marker set the West right-of-way line, more or less, of Gold Rush Lane, north of the 21st Mile Drive; at 42,426.2 varas the West line of the John Jackson survey, and the East line of the Benjamin Bacus survey, said County line being South 218.5 varas from the Northwest corner of said 160 acre survey and 218.5 varas South of an interior of said Bacus

RECEIVED

APR 11 1987

GENERAL LAND OFFICE



County 52465

THENCE continue North 89° 29' 55" West; at 43,376.3 varas the most Westerly West line of B. Baccus Survey and the East line of Josiah Ashlock Survey, said County Line being South 20.2 varas from the most Westerly Northwest corner of said Baccus Survey and South 1193.5 varas from the Northeast corner of said J. Ashlock Survey;

THENCE continue North 89° 29' 55" West; at 43,610.4 varas the 23rd Mile Marker set in a low lying pasture; at 43,764.5 varas Furneaux Creek, at 45,277.1 varas the West line of the Josiah Ashlock Survey and the East line of the Lionel Simpson Survey, said County Line being South 1159.2 varas of said Ashlock's Northwest corner and 1159.2 varas South of said Simpson's Northeast corner;

THENCE continue North 89° 29' 55" West; at 45,619.20 varas the 24th Mile Marker set in an industrial construction site; at 45,752.3 varas the West line of the L. Simpson Survey and the East line of the William B. Row Survey, said County Line being North 739.2 varas from said Simpson's Southwest corner and North 739.2 varas from said Row's Southeast corner;

THENCE continue North 89° 29' 55" West at 46,034.87 varas the centerline of the Missouri and Texas Railroad; at 46,520.59 varas the East right-of-way line of Interstate 35; at 46,738.73 varas the West right-of-way line of Interstate 35 and heavy timber; at 46,724.0 varas the Elm Fork of the Trinity River; at 47,177.9 varas the West line of W.B. Row Survey and the East line of the Martin O'Neil Survey, said County Line being North 751.7 varas from the Southwest corner of said Row's Survey and 198.7 varas South of the Northeast corner of M. O'Neil Survey;

THENCE continue North 89° 29' 55" West at 47,520.00 varas the 25th Mile Marker set in the brushy bottoms of Timbercreek; at 47,736.0 varas Timbercreek at its closest point to the County Line bears North 35.6 varas; at 48,084.7 varas a fence on the West line of the M. O'Neil Survey and on the East line of the J. Mounts Survey, said County Line being 190.8 varas South of M. O'Neil's Northwest corner and South 629.7 varas from the Northeast corner of the J. Mounts Survey;

THENCE continue North 89° 29' 55" West at 48,884.8 varas a fence on the West line of J. Mounts Survey and the East line of the William A. Trimble Survey, said County Line being South 226.4 varas from the inside ell corner of the J. Mounts Survey and South 226.4 varas from the Northwest corner of the William A. Trimble Survey;

THENCE continue North 89° 29' 55" West at 49,060.8 the 26th Mile Marker set on a very large construction site in the name of Vista Ridge; at 49,193.8 varas toe of a 10 foot berm; at 49,214.5 varas top of berm; at 49,224.1 varas exit top of berm; at 49,348.8 varas the top bank of a 300 foot wide channel, more or less, under construction; at 49,549.2 varas enter the bed of the channel; at 50,620.0 varas exit bed of channel; at 50,647.1 varas top bank of channel; at 50,688.8 varas the West line of the William A. Trimble Survey and the East line of the Gilbert C. Woolsey Survey, said County Line being South 210.6 varas of W.A. Trimble's Northwest corner and South 1258.7 varas of Gilbert C. Woolsey's Northeast corner;

RECEIVED
APR 11 1987
GENERAL LAND OFFICE
-6-

THEMCE continue North 89° 29' 55" West; at 43,376.3 varas the most Wester-
ly West line of B. Bacus Survey and the East line of Josiah Ashlock Sur-
vey, said County line being South 20.2 varas from the most Westerly North-
west corner of said Bacus Survey and South 119.5 varas from the Northeast
corner of said J. Ashlock Survey;

THEMCE continue North 89° 29' 55" West; at 43,610.4 varas the 23rd Mile
Marker set in a low lying pasture; at 43,764.5 varas Furness Creek, at
45,277.1 varas the West line of the Josiah Ashlock Survey and the East line
of the Lionel Simpson Survey, said County line being South 119.2 varas of
said Ashlock's Northwest corner and 119.2 varas South of said Simpson's
Northeast corner;

THEMCE continue North 89° 29' 55" West; at 45,619.20 varas the 24th Mile
Marker set in an industrial construction site; at 45,752.3 varas the West
line of the L. Simpson Survey and the East line of the William B. Row
Survey, said County line being North 739.2 varas from said Simpson's
Southwest corner and North 739.2 varas from said Row's Southeast corner;

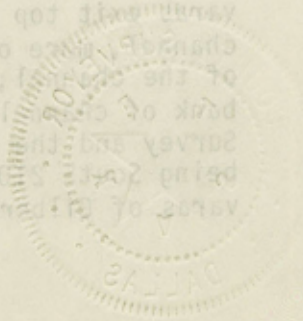
THEMCE continue North 89° 29' 55" West at 46,034.87 varas the centerline of
the Missouri and Texas Railroad; at 46,250.59 varas the East right-of-way
line of Interstate 35; at 46,738.73 varas the West right-of-way line of
Interstate 35 and heavy timber; at 46,724.0 varas the Elm Fork of the
Trinity River; at 47,177.9 varas the West line of W.B. Row Survey and the
East line of the Martin O'Neil Survey, said County line being North 751.7
varas from the Southwest corner of said Row's Survey and 198.7 varas South
of the Northeast corner of M. O'Neil Survey;

THEMCE continue North 89° 29' 55" West at 47,520.00 varas the 25th Mile
Marker set in the brushy bottoms of Timbercreek; at 47,736.0 varas
Timbercreek at its closest point to the County line being North 35.6 varas;
at 48,084.7 varas a fence on the West line of the M. O'Neil Survey and on
the East line of the J. Mounts Survey, said County line being 190.8 varas
South of M. O'Neil's Northwest corner and South 629.7 varas from the
Northeast corner of the J. Mounts Survey;

THEMCE continue North 89° 29' 55" West at 48,884.8 varas a fence on the
West line of J. Mounts Survey and the East line of the William A. Trimble
Survey, said County line being South 256.4 varas from the inside E1 corner
of the J. Mounts Survey and South 256.4 varas from the Northwest corner of
the William A. Trimble Survey;

THEMCE continue North 89° 29' 55" West at 49,060.8 the 26th Mile Marker set
on a very large construction site in the name of Vista Ridge; at 49,193.8
varas toe of a 10 foot berm; at 49,214.5 varas top of berm; at 49,224.1
varas top of berm; at 49,348.8 varas the top bank of a 300 foot wide
channel, under construction; at 49,543.2 varas enter the bed
of the channel; at 50,620.0 varas exit bed of channel; at 50,647.1 varas top
of the channel; at 50,688.8 varas the West line of the William A. Trimble
Survey and the East line of the Albert C. Woolsey Survey, said County line
being 241.5 varas of W.A. Trimble's Northwest corner and South 1258.7
varas of Albert C. Woolsey's Northeast

RECEIVED
APR 11 1987
GENERAL LAND OFFICE



THENCE continue North 89° 29' 55" West; at 51,321.60 varas the 27th Mile Marker set in aforementioned construction site; at 52,589.6 varas the West line of Gilbert C. Woolsey Survey, said County Line being South 1242.1 varas of said Woolsey Survey's Northwest corner;

THENCE continue North 89° 29' 55" West at 52,715.8 varas the East line of the Heirs Clarinda Squires, said County line being North 536.8 varas from said Squires Northeast corner;

THENCE continue North 89° 29' 55" West at 53,222.40 varas the 28th Mile Marker set in a pasture;

THENCE continue North 89° 29' 55" West at 53,585.8 varas the West line of Clarinda Squires Survey and the East line of the Peter Harmonson 240 acre Survey, said County Line being South 529.2 varas from the Northwest corner of Clarinda Squires Survey and North 219.6 varas of the Southeast corner of the Peter Harmonson 240 acre Survey;

THENCE continue North 89° 29' 55" West through an old strip mine area; at 54,414.64 varas a brass cap in concrete on the East right-of-way line of S.H. 121; at 54,463.37 varas a brass cap in concrete on the West right-of-way line of S.H. 121; at 54,536.2 varas the West line of the Peter Harmonson 240 acre Survey and the East line of a 400.0 acre Survey also in the name of Peter Harmonson, said County Line being North 227.9 varas from the Southwest corner of said 240.0 acre Survey in the name of P. Harmonson and North 227.9 varas from the Southeast corner of said 400.0 acre Survey in the name of P. Harmonson;

THENCE continue North 89° 29' 55" West at 55,123.20 varas the 29th Mile Marker set in the bottoms of Denton Creek in a future trailer park site under construction; at 55,631.2 varas Denton Creek, at 55,724.2 varas the West line of the 400.0 acre tract in the name of Peter Harmonson and the East line of the Heirs of Henry Turner Survey, said County Line being North 238.3 varas from the Southwest corner of said Harmonson Survey and North 238.3 varas from the Southeast corner of the Heirs of Henry Turner Survey;

THENCE continue through the bottoms of Denton Creek, at 56,080.1 varas Denton Creek; at 56,466.1 varas the West line of the Heirs of Henry Turner Survey and the East line of the J.C. Moffatt Survey, said County Line being North 244.8 varas of said Turner Survey's Southwest corner and North 661.4 varas from the Southeast corner of the J.C. Moffatt Survey;

THENCE continue North 89° 29' 55" West at 56,756.53 varas set the Northwest corner of Dallas County in the northerly end and the easterly edge of a fingerlike projection of timber in a pasture; said corner also being in the head of a draw draining to the South within the timber.

Donald J. Jackson 4/7/87

Donald J. Jackson
Special County Surveyor
In and for Dallas County
Registered Public Surveyor

RECEIVED
APR 11 1987
GENERAL LAND OFFICE



File No. _____

_____ County

Filed _____ 19 _____

GARRY MAURO, Com'r

By _____

THESE CONTAINS NORTH 89° 29' 52" WEST AT 53,285.8 VARAS THE WEST LINE OF CLARINDA SPURTES SURVEY AND THE EAST LINE OF THE PETER HARMONSON 240 ACRE SURVEY, SAID COUNTY LINE BEING SOUTH 52° 2 VARAS FROM THE NORTHWEST CORNER OF CLARINDA SPURTES SURVEY AND NORTH 219.6 VARAS OF THE SOUTHEAST CORNER OF THE PETER HARMONSON 240 ACRE SURVEY;

THESE CONTAINS NORTH 89° 29' 52" WEST AT 53,285.8 VARAS THE WEST LINE OF CLARINDA SPURTES SURVEY AND THE EAST LINE OF THE PETER HARMONSON 240 ACRE SURVEY, SAID COUNTY LINE BEING SOUTH 52° 2 VARAS FROM THE NORTHWEST CORNER OF CLARINDA SPURTES SURVEY AND NORTH 219.6 VARAS OF THE SOUTHEAST CORNER OF THE PETER HARMONSON 240 ACRE SURVEY;

THESE CONTAINS NORTH 89° 29' 52" WEST THROUGH AN OLD STRIP WINE AREA; AT 54,414.64 VARAS A BRASS CAP IN CONCRETE ON THE EAST RIGHT-OF-WAY LINE OF S.H. 121; AT 54,463.37 VARAS A BRASS CAP IN CONCRETE ON THE WEST RIGHT-OF-WAY LINE OF S.H. 121; AT 54,536.2 VARAS THE WEST LINE OF THE PETER HARMONSON 240 ACRE SURVEY AND THE EAST LINE OF A 400.0 ACRE SURVEY ALSO IN THE NAME OF PETER HARMONSON, SAID COUNTY LINE BEING NORTH 52° 2 VARAS FROM THE SOUTHWEST CORNER OF SAID 240.0 ACRE SURVEY, THE NAME OF B. HARMONSON AND NORTH 227.9 VARAS FROM THE SOUTHEAST CORNER OF SAID 400.0 ACRE SURVEY IN THE NAME OF P. HARMONSON;

THESE CONTAINS NORTH 89° 29' 52" WEST AT 52,153.20 VARAS THE 20TH MILE MARKER SET IN THE BOTTOMS OF DENTON CREEK IN A FUTURE TRAILER PARK SITE UNDER CONSTRUCTION; AT 52,631.2 VARAS DENTON CREEK, AT 52,724.2 VARAS THE WEST LINE OF THE 400.0 ACRE TRACT IN THE NAME OF PETER HARMONSON AND THE EAST LINE OF THE HEIRS OF HENRY TURNER SURVEY, SAID COUNTY LINE BEING NORTH 230.3 VARAS FROM THE SOUTHWEST CORNER OF SAID HARMONSON SURVEY AND NORTH 238.3 VARAS FROM THE SOUTHEAST CORNER OF THE HEIRS OF HENRY TURNER SURVEY;

THESE CONTAINS THROUGH THE BOTTOMS OF DENTON CREEK, AT 56,080.1 VARAS DENTON CREEK; AT 56,466.1 VARAS THE WEST LINE OF THE HEIRS OF HENRY TURNER SURVEY AND THE EAST LINE OF THE J.C. MOFFATT SURVEY, SAID COUNTY LINE BEING NORTH 244.8 VARAS OF SAID TURNER SURVEY'S SOUTHWEST CORNER AND NORTH 661.4 VARAS FROM THE SOUTHEAST CORNER OF THE J.C. MOFFATT SURVEY;

THESE CONTAINS NORTH 89° 29' 52" WEST AT 66,756.53 VARAS SET THE NORTHWEST CORNER OF DALLAS COUNTY IN THE NORTHERLY END AND THE EASTERLY EDGE OF A FINGERLIKE PROJECTION OF TIMBER IN A PASTURE; SAID CORNER ALSO BEING IN THE HEAD OF A DRAIN DRAINING TO THE SOUTH WITHIN THE TIMBER.

[Handwritten signature]

RECEIVED
APR 10 1987
GENERAL LAND OFFICE

RECEIVED
APR 11 1987
GENERAL LAND OFFICE



File No. County Bdry Line No. 4C

Denton County
Portion of the South Denton
County Line "North Dallas County Line"

Filed June 8 19 87

GARRY MAURO, Com'r

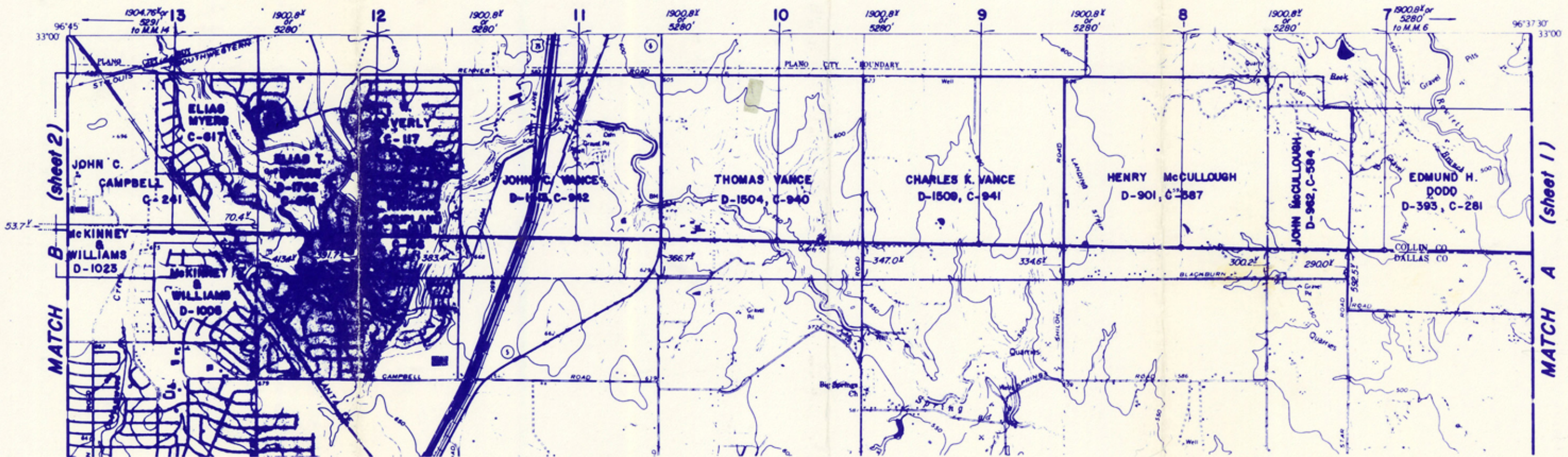
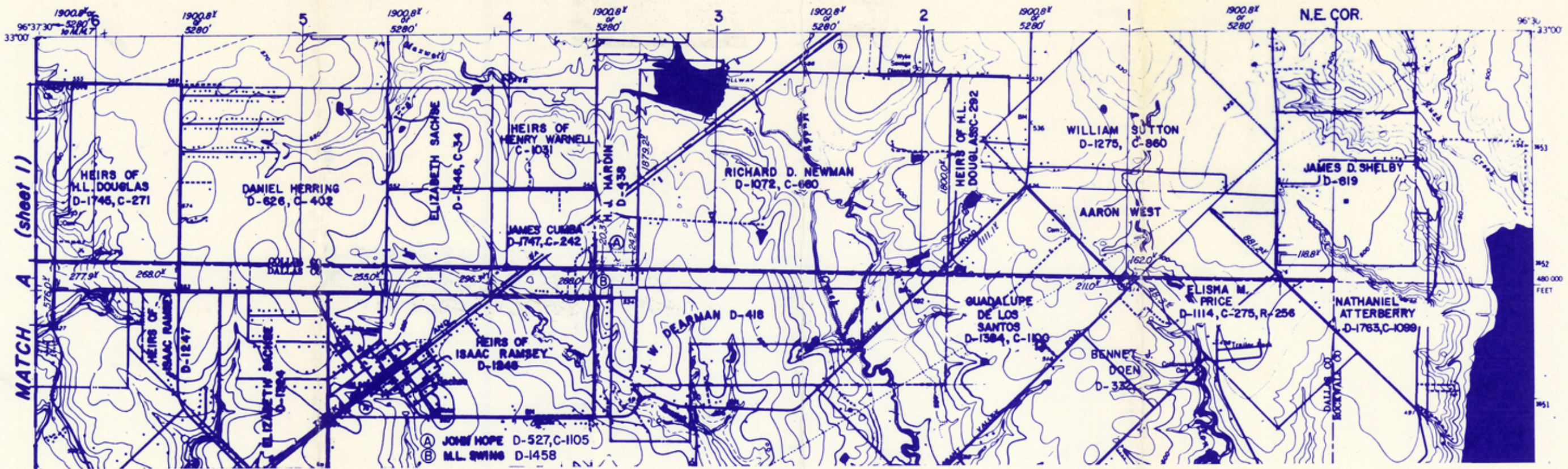
By R. V. Molina

| | | | | | |
|-------|-------------------------|---|------------|----|------------|
| 622F | R'0'0" | S | 120'332'30 | 00 | 481'251'00 |
| 522F | R'0'0" | S | 120'310'03 | 03 | 481'255'48 |
| 2'H | 131 | | | | |
| 622F | R'0'0" | S | 111'088'20 | 20 | 481'332'30 |
| 522F | R'0'0" | S | 115'534'32 | 32 | 481'350'00 |
| 1-32 | | | | | |
| 622F | R'0'0" | S | 12'032'10 | 10 | 480'388'10 |
| 522F | R'0'0" | S | 12'045'50 | 50 | 480'391'00 |
| 2'H | 580 (brazon road) | | | | |
| 622F | R'0'0" | S | 141'128'37 | 37 | 480'455'05 |
| 522F | R'0'0" | S | 120'021'30 | 30 | 480'450'04 |
| 11'2" | 12 (Central Exblez2249) | | | | |
| 622F | R'0'0" | S | 142'455'53 | 53 | 480'000'00 |
| 522F | R'0'0" | S | 142'215'51 | 51 | 480'000'00 |
| 11'4" | 2 (Central Exblez2249) | | | | |
| 622F | R'0'0" | S | 180'183'10 | 10 | 480'313'32 |
| 522F | R'0'0" | S | 181'118'53 | 53 | 480'311'00 |
| 2'H | 18 | | | | |

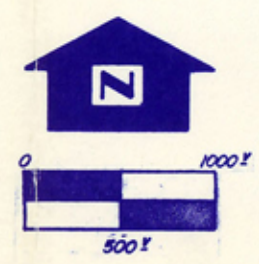
21116 67116 COORDINATE 206 MARKER2 ON THE NORTH DNTLV2



counter 52472



File No. County Bdry Line No. 4 ~~A~~ ~~B~~
North Dallas & Denton County
North Dallas County Line
 Filed 6-3
 By Garry Mauro, Com'r 19 87
Douglas Howard

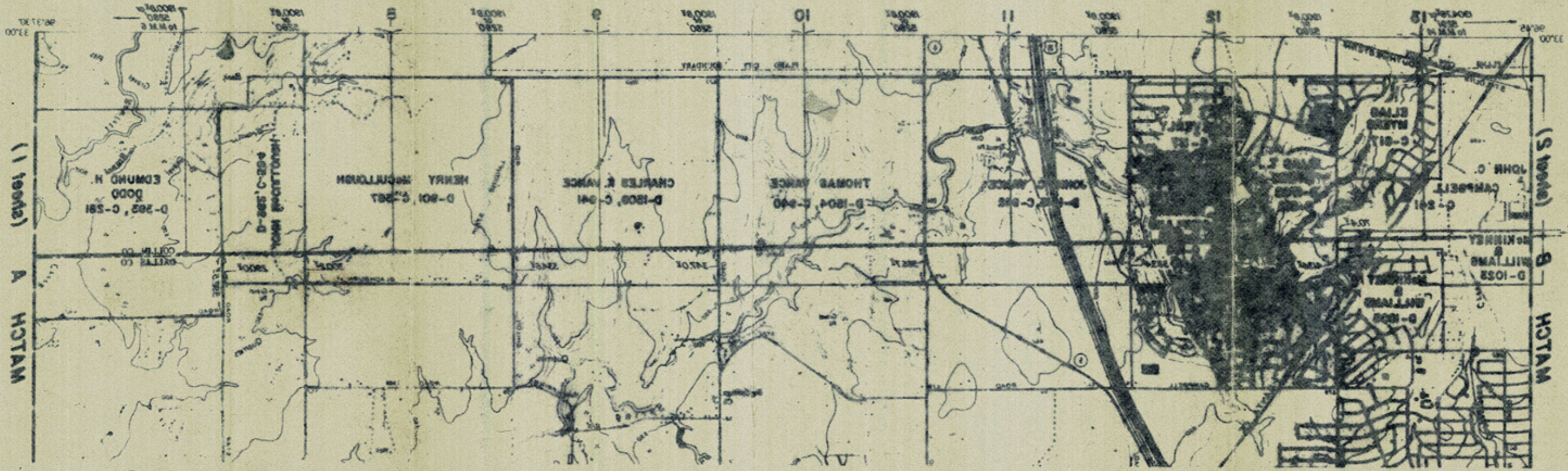
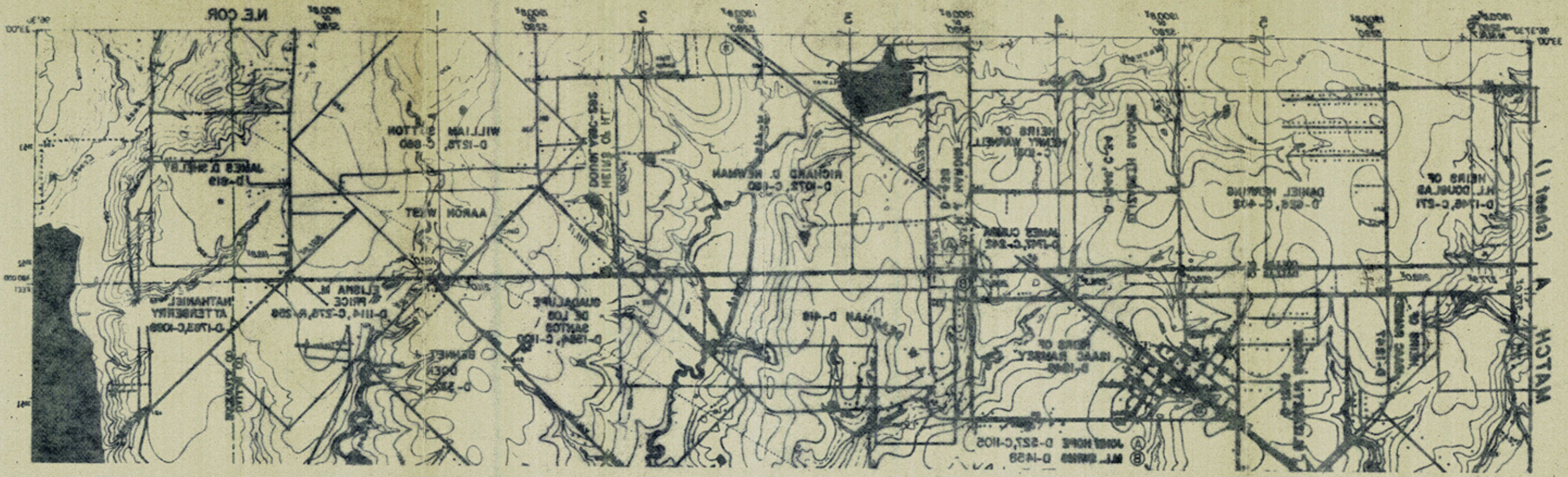


SCALE: 1" = 1000 FEET

NOTE: ALL MILE MARKERS ARE BRASS CAPS SET IN CONCRETE MONUMENT FLUSH WITH THE GROUND, AND REFERENCED TO STATE PLANE COORDINATES (USGS NAD 27 DATUM)

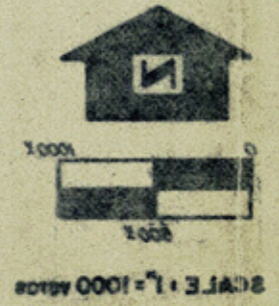
PRESENTATION
 OF THE
North Dallas County Line
 A PORTION OF THE
South Collin County Line
 AND
 A PORTION OF THE
South Denton County Line

D 268
 1-2-87



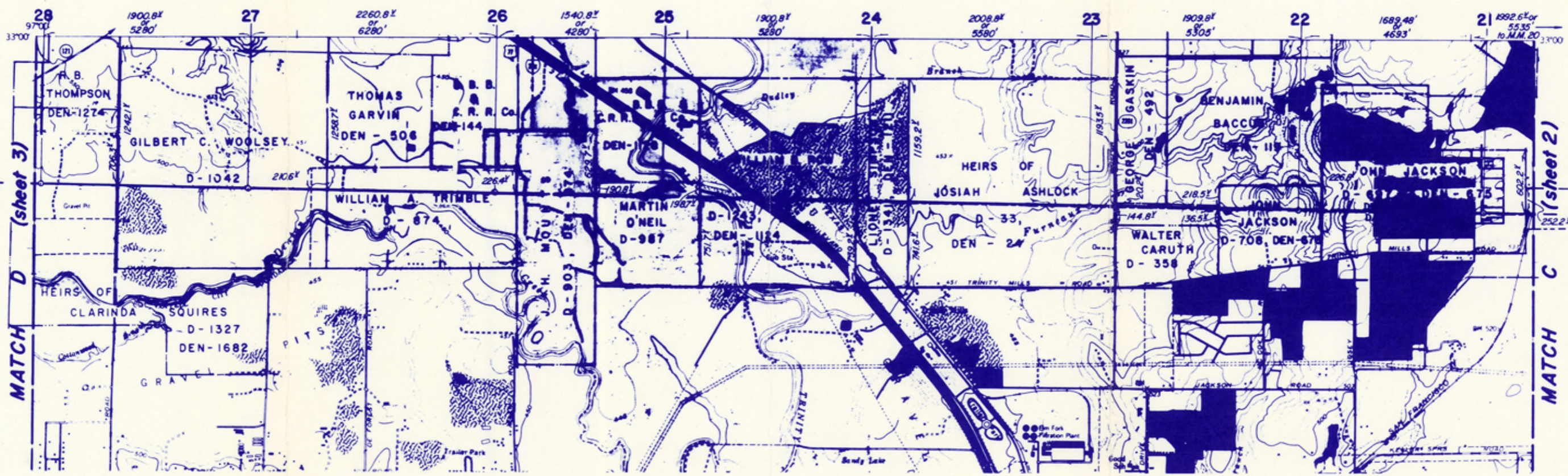
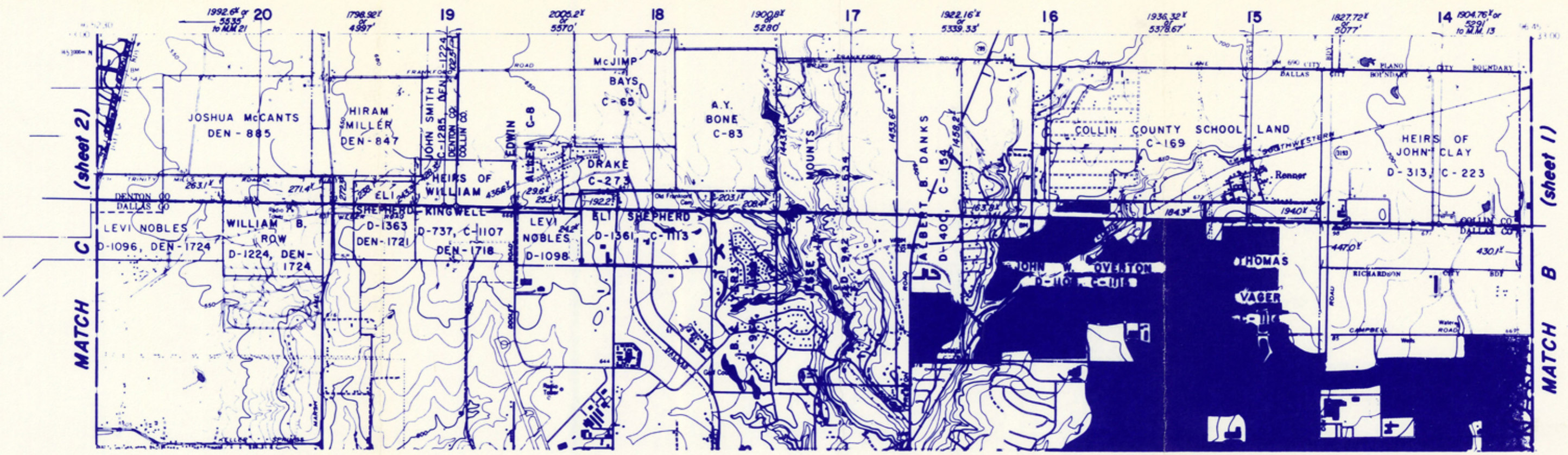
SOUTH DENTON COUNTY LINE
 A PORTION OF THE
 AND OFFICE
 SOUTH COLLIN COUNTY LINE
 A PORTION OF THE
 NORTH DALLAS COUNTY LINE
 OF THE
 PRESENTATION
 FEB 12 1987
 1.5.87

NOTE: ALL MILE MARKERS ARE BRASS CAPS SET IN CONCRETE
 MONUMENT FLUSH WITH THE GROUND, AND REFERENCED TO
 STATE PLANE COORDINATES (USGS NAD 27 DATUM)

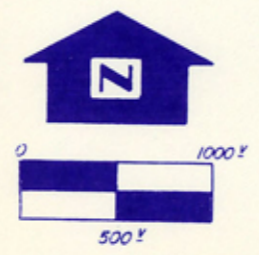


Filed GARY MAURO, Com'r
 North Dallas County Line
 North Dallas County Line
 The No. County Bldg Line No. 18

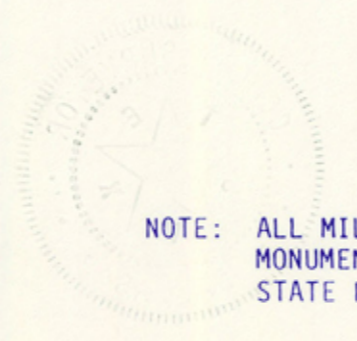
25473
 1.5.87



File No. County Bdry Line No. 4B
DENTON County
North Dallas County Line
 Filed 6-8
 By GARRY MAURO, Com'r
Douglas Howard 19 87

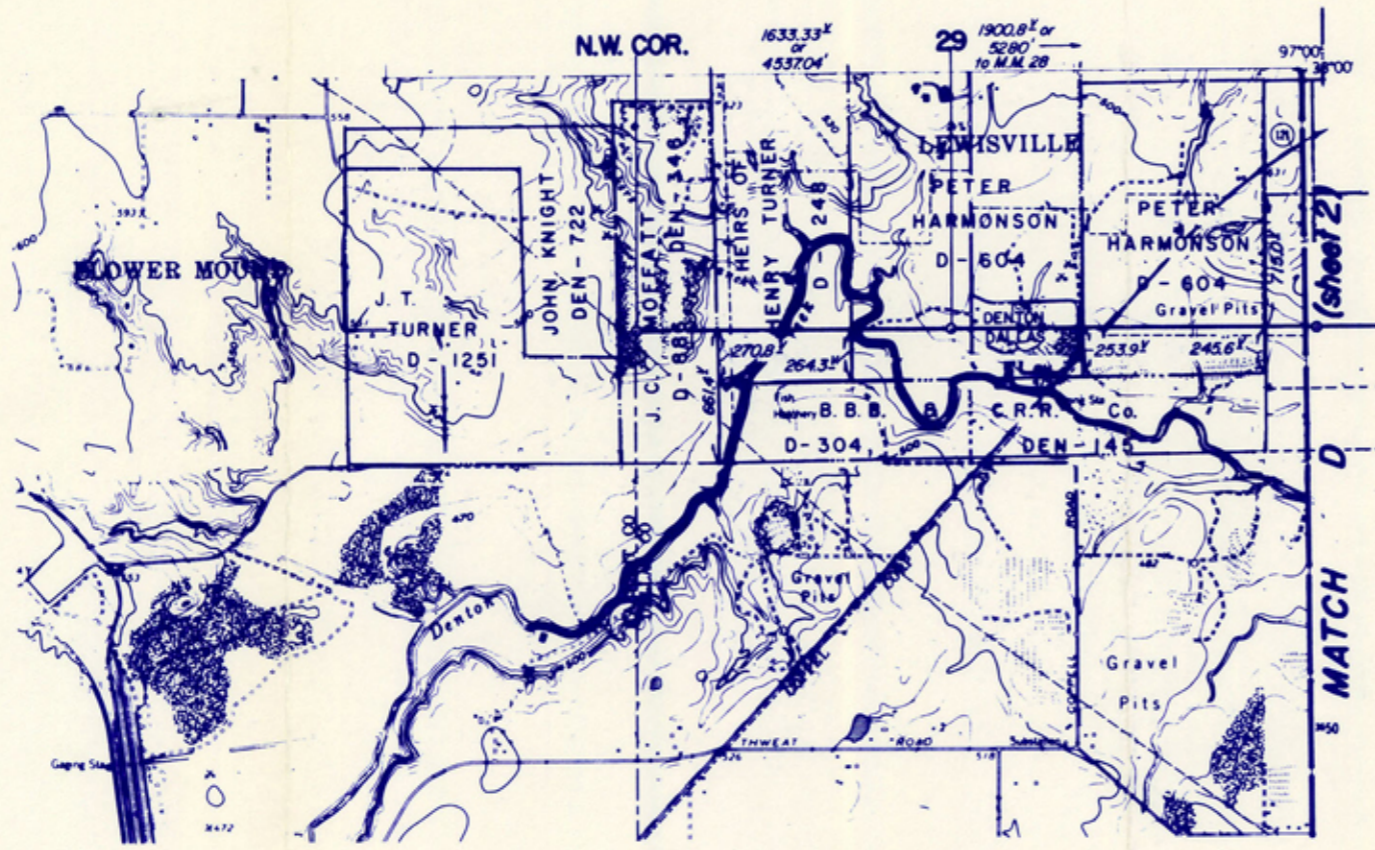


SCALE: 1" = 1000 varas

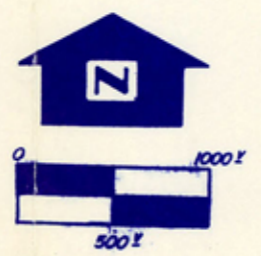


NOTE: ALL MILE MARKERS ARE BRASS CAPS SET IN CONCRETE MONUMENT FLUSH WITH THE GROUND, AND REFERENCED TO STATE PLANE COORDINATES (USGS NAD 27 DATUM)

PRESENTATION
 OF THE
North Dallas County Line
 A PORTION OF THE
South Collin County Line
 AND
 A PORTION OF THE
South Denton County Line



File No. County Bdry Line No. 4B
DENTON County
North Dallas County Line
6-8
 Filed GARRY MAURO, Com'r 19 87
 By Douglas Howard



SCALE · 1" = 1000 FEET

NOTE: ALL MILE MARKERS ARE BRASS CAPS SET IN CONCRETE MONUMENT FLUSH WITH THE GROUND, AND REFERENCED TO STATE PLANE COORDINATES (USGS NAD 27 DATUM)

PRESENTATION
 OF THE
North Dallas County Line
 A PORTION OF THE
South Collin County Line
 AND
 A PORTION OF THE
South Denton County Line

