

**De Witt County Boundaries with Karnes County.**

The N.W. Boundary of De Witt Co. S. 51° W. from the lower corner of Jesse M<sup>c</sup> Coy  $\frac{1}{4}$  of a Lge on the east bank of the Guadalupe River is 69,700 Varas, from said Jesse M<sup>c</sup> Coy corner S. 51° W. to the intersection of the District Line 47,859 varas again S. 51° W. 21,841 varas to the West corner of De Witt Co. in all from said Jesse M<sup>c</sup> Coy corner S. 51° W. 69,700 Varas.

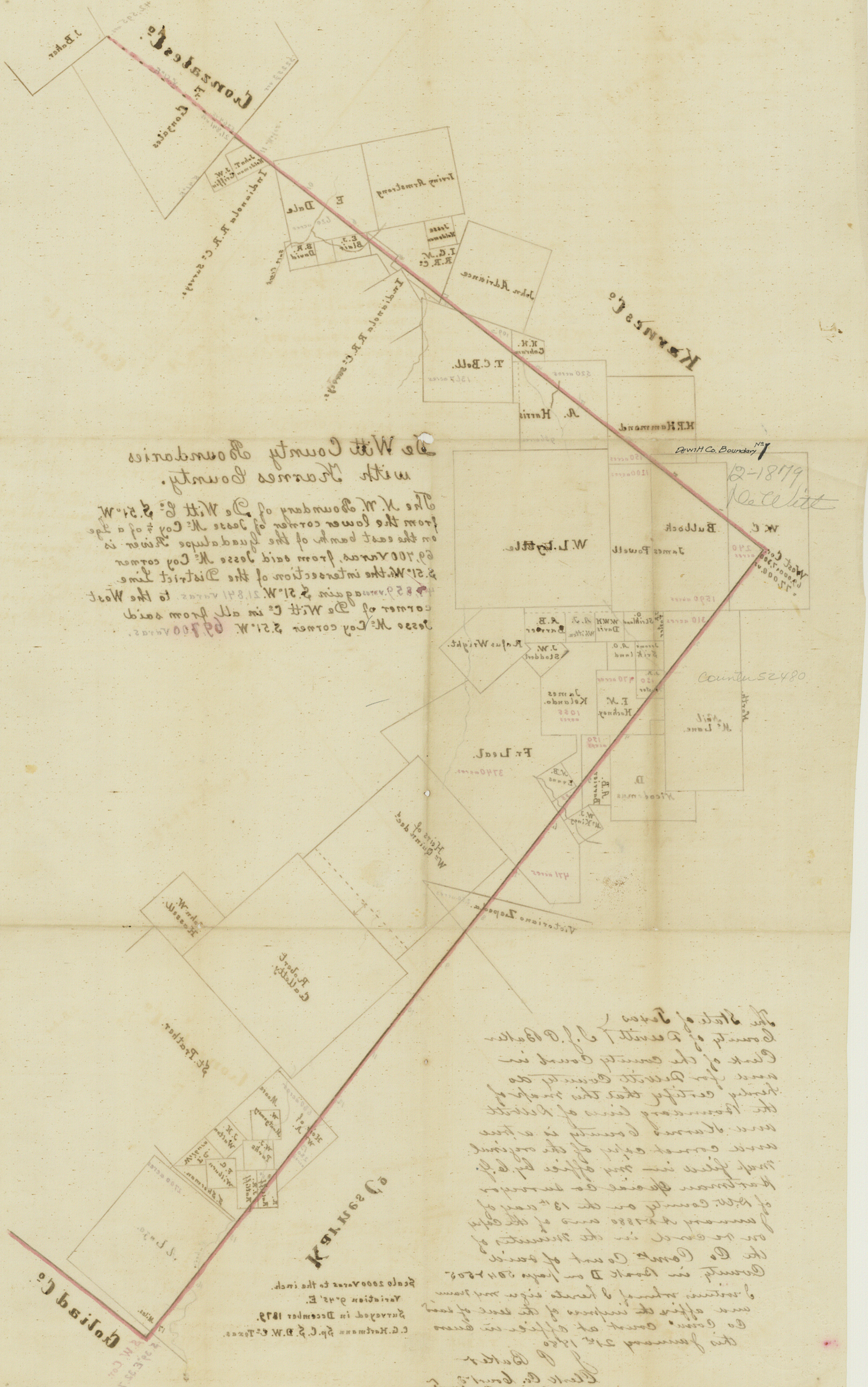
The State of Texas  
 County of De Witt J. J. P. Baker  
 Clerk of the county Court in  
 and for De Witt County do  
 hereby certify that this map of  
 the Boundary lines of De Witt  
 and Karnes County is a true  
 and correct copy of the original  
 map filed in my office by G. F.  
 Hartman Special Co Surveyor  
 of D.W. County on the 13<sup>th</sup> day of  
 January A.D. 1880 and of the copy  
 on record in the minutes of  
 the Co Court Count of said  
 County in Book D on page 504 & 505

I witness whereof I hereto sign my name  
 and affix the impress of the seal of said  
 Co Court Count at office in course  
 this January 21<sup>st</sup> 1880

J. J. P. Baker  
 Clerk Co. Court of  
 De Witt County Texas

Scale 2000 Varas to the inch.  
 Variation 9° 45' E.  
 Surveyed in December 1879.  
 C. G. Hartmann Sp. C. S. D. W. Co. Texas.

**Coliad Co**



The N.W. boundary of De Witt Co. is 21° W. from the lower corner of Jesse M. Coy's of a line on the east bank of the headwater river is 21° W. from said Jesse M. Coy corner 21° W. the intersection of the District line 21° W. again 21° W. 21.841 vars to the West corner of De Witt Co. in all from said Jesse M. Coy corner 21° W. 21.500 vars.

The West County boundaries with Kearnes County.

The State of Texas  
County of Denton J. D. Baker  
Clerk of the County Court in  
and for Denton County do  
hereby certify that the maps of  
the boundary lines of Denton  
and De Witt County is a true  
and correct copy of the original  
map filed in my office by J. D.  
Baker Sheriff of Denton  
County on the 13th day of  
January 1880 and of the copy  
on record in the minutes of  
the County Court of said  
County in Book D on page 204-205  
of volume whereof I have sign and sworn  
and affix the seal of the said County  
County Court at office in Denton  
this January 21st 1880

J. Baker  
Clerk of Denton County

C. A. Hartman Sp. C. D. W. Co. Texas.  
Surveyed in December 1879.  
A. Hartman Sp. C. D. W. Co. Texas.  
Scale 2000 vars to the inch.

02201161

Goldard Co.

Report

The State of Texas }  
County of De Witt }

To the Hon. County Commissioners Court  
of De Witt County, Fall Term  
January 1880

At the regular August Term 1879 of the Hon. County Commissioners Court of De Witt County, the undersigned being appointed special county surveyor to run the lines between De Witt and Karnes Counties and establish the corners of De Witt County; and at the same term an order was entered on the minutes of said court and directed to the undersigned to run said lines and establish the corners between De Witt and Karnes Counties and it was further ordered, that the clerk of said court transmit a certified copy of the order to the County Commissioners Court of Karnes County, <sup>after the regular meeting of the county commissioners court of Karnes County</sup> and upon inquiry <sup>of the county commissioners court of Karnes County</sup> was informed by the clerk of said court, that the County Commissioners Court of said county had taken no action in the matter.

Sec. 4 of an act, establishing and prescribing the manner of ascertaining the boundaries of counties, approved April 22<sup>d</sup> 1879, provides that it shall be the duty &c &c which time shall not be later than twenty days after the meeting of said county court of the county notified for the commencement of the survey.

Sec. 7 of the foregoing recited act, provided: that if either of the surveyors appointed to run and mark

such line, shall fail to attend at the time and place appointed, the one in attendance shall proceed alone to perform the duties assigned him and make his report to the County Court employing him, which being approved by said Court &c &c &c.

The regular meeting of the County Commissioners Court of Karnes County, being the second Monday in November 1879, which is the 10<sup>th</sup> November 1879 and as stated before, that I was informed, that the County Commissioners Court of Karnes County had taken no action in the matter, I waited the twenty days after the meeting of the County Court of Karnes County and commencing on the first day of December 1879 running the Boundary lines and establishing the corners between De Witt and Karnes Counties. The field notes and map of the survey I filed with the County Clerk yesterday and respectfully state: that where the Boundary lines of De Witt and Karnes Counties crossing the different surveys, the calculation of the number of acres belonging to De Witt County are made by actual measurement and using plots and copies of field notes on file in the surveyors office of De Witt County; a list of those tracts, giving the number of acres, which belonging to De Witt County, so far as I was able to ascertain the same, accompanying this report and marked exhibit

A

Very Respectfully

C. S. Hartmann

Quora, the 13<sup>th</sup> Jan'y. 1880 Sp. C. J. D. W. Co. Texas

Subscribed and sworn to before me this the 15<sup>th</sup> day of  
January 1880

J. P. Baker  
C. C. C. D. W. Co.

I certify that the above and foregoing  
two pages ~~is~~ is a true and correct copy of the  
original report now on file in my office and  
of the records of the minutes of Co Court Court of  
De Witt County Texas

In witness whereof I hereunto sign  
my name and affix the seal of the  
Co Court<sup>th</sup> Court of said County at  
Office in Austin this 17<sup>th</sup> day of January  
A D 1880

J P Baker  
Clerk of County Court of De Witt  
County Texas —



Exhibit A.

The State of Texas

County of De Witt County }

To the Hon. County Commissioners Court of  
De Witt County, Call Term January 1880.

List of surveys, where the Boundary lines between  
De Witt and Karnes Counties crossing the same  
and giving the number of acres that belonging  
to De Witt County, so far I was able to ascertain  
by actual measurement and using plots and field  
notes in the surveyors office in De Witt County,  
Dale, E. 620 acres, Adrance John 18 acres, Bell  
J. C. 1367 acres, Harris A, 956 acres, Hammond  
H. P. 150 acres, Bulloch, W. C. and Powell, James  
3030 acres, Mc Lane, Nail 310 acres, Foster J. M.  
130 acres, Hackney, J. N. 470 acres, Barrier  
A. B. 150 acres, Leal Francisco 3740 acres,  
Yepeda Victor. 250 acres, Moore W<sup>m</sup> A. 680 acres,  
Hatliff, W. 50 acres, Lazo Antonio 2700 acres,

C. G. Hartmann

Special C<sup>o</sup> Surveyor D. W. C.

Subscribed and sworn to before me this the  
15<sup>th</sup> day of January 1880.

J. P. Baker

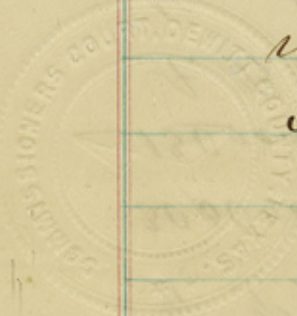
C. C. De Witt C.

De Witt Co. Bery Line #1

The State of Texas,  
County of DeWitt } I J. P. Baker Clerk of the  
County Court in and for said County  
do certify that the foregoing twenty  
five lines is a true and correct copy of  
the original now on file in my office  
and of the records of the minutes of the  
County Commissioners Court of said  
County

In witness whereof I have to  
signed my name and affixed the  
seal of said Court at Office  
in Cuero this 17<sup>th</sup> day of January  
A D 1880

J. P. Baker  
Clk C. C. De Witt Co Tex



1  
Karnes Co. Bery Line  
De Witt Co Bery File No. 1

The State of Texas }  
County of Delbitt }

At a Call session  
of the Honorable Commissioners Court of  
Delbitt County, begun and holden at the  
Court House, <sup>thereat</sup> in the City of Cress, on  
the 12<sup>th</sup> day of January A.D. 1880, the follow-  
ing order was had made and entered  
upon the Minutes of said Court, to wit,

10 " Order to Clerk " January 15<sup>th</sup> 1880 "

It is ordered by the Court that the  
Clerk make out Certified Copies of  
the report, Exhibit, Field notes, and  
map, of the boundary line between this  
and Karnes Counties, as made to  
this Court by C. G. Hartman County Sur-  
veyor, - and forward the same to the  
Commissioner of the General Land  
Office at Austin, - and that the Com-  
missioner of the General Land Office  
be requested to immediately notify the  
Comptroller of the establishment of the  
line between the Counties, - and that the  
Comptroller be requested, to correct the  
Abstract of Titles of this **Delbitt** and  
Karnes Counties.

26

} { }  
} { }  
} { }



Dr with Co Bdry Line #1

The State of Texas }  
County of Delbitt }  
}

I J P Baker Clerk of the County Court in and for said County <sup>do</sup> certify that the 16 lines on opposite page hereof, Beginning at 10 to 26 inclusive is a correct copy of an order made by the Commission Court in and for Delbitt County as appears of record in the minutes of said Court in Book D on page 497.

In witness whereof I hereto sign my name and affix the seal of County Commission Court of said County at <sup>office in</sup> Cicer this the 17<sup>th</sup> day of January A D 1880

J P Baker  
Clerk, C.C. Delbitt Co. Tx



To the Hon. County Commissioners Court of  
De Witt County, State of Texas, call term January  
1880.

The State of Texas }  
County of De Witt }

Field Notes of surveying the Boundary Lines between  
De Witt and Karnes Counties, the survey made in  
accordance with an order entered at the Hon. County  
Commissioners Court of De Witt County, August Term  
1879. Reference may be had to Book D. Minutes of  
County Commissioners Court, August Term 1879.  
Commencing at a point S. 51° W. 69,700 varas from  
the lower corner of  $\frac{1}{4}$  of a League of land granted to  
Jesse Mc Coy, standing on the East bank of the  
Guadalupe River in Gonzales County, which point is  
77,000 varas from the North East corner of De Witt  
County and is the West corner of De Witt County, at  
said point set a post in earth mound for the West  
corner of De Witt County, said post branded D.W. &  
W. corner, from which a Live Oak 16 inch. in diam.  
bears S. 55 $\frac{1}{2}$ ° E. 196 $\frac{3}{5}$  varas and <sup>Marked</sup> ~~XXXXXX~~ D.

Thence N. 51° E. with the old marked County Boundary  
at 502 varas bears a Live Oak 16 inch. in diam. marked  
X S. 39° E. 10 varas, at 538 varas branch, runs south,  
at 780 varas branch runs south, at 1900 $\frac{4}{5}$  varas set  
a post in earth mound for the first mile and branded  
D.W. 1. M. from which a Live Oak 18 inch. in diam.  
marked D. bears N. 40 $\frac{1}{2}$ ° E. 20 $\frac{2}{5}$  varas, at 2851 varas

a Live Oak 30 inch. in diam. marked D. S.  $39^{\circ}$  E.  $2\frac{1}{2}$  varas, at 3801 $\frac{3}{5}$  varas set a post in earth mound for the second mile and branded D. W. 2. M. from which a Live Oak 28 inch. in diam. marked D. bears S.  $66^{\circ}$  E.  $10\frac{3}{5}$  varas, at 3902 varas branch, runs south, at 4442 $\frac{3}{5}$  varas branch, runs south, at 5062 varas head of a branch, runs south, at 5702 $\frac{2}{5}$  varas set a post in earth mound for the third mile and branded D. W. 3. M. from which a Musqt. 12 inch in diam. marked X bears S.  $21^{\circ}$  W.  $22\frac{3}{5}$  varas, at 6163 varas branch, runs south, at 6473 varas intersected the west line of A. Harris's  $\frac{1}{3}$  of a League and North 710 varas of his S. W. corner a stake, from which a Live Oak 14 inch. in diam. marked H bears S.  $17\frac{1}{2}^{\circ}$  E.  $20\frac{3}{5}$  varas, at 7590 varas branch, runs south, at 7603 $\frac{5}{5}$  varas set a post in earth mound for the fourth mile and branded D. W. 4. M. from which a small Musqt. marked X bears N.  $49^{\circ}$  E.  $4\frac{1}{5}$  varas, at 7634 varas Road from Helena to Cuero, at 8503 varas branch runs south, at 9504 varas set a post in earth mound for the fifth mile, and branded D. W. 5. M. from which a Live Oak 18 inch. in diam. marked X bears S.  $69^{\circ}$  W.  $3\frac{7}{5}$  varas, at 9,945 varas intersected the south line of H. H. Gokram's preemption survey, and West 364 varas of his S. E. corner, at 10,046 varas head of M<sup>r</sup> Tennell's branch and Road from Helena to Cuero, at 10413 varas intersected the west line of T. C. Bell's,  $\frac{1}{3}$  of a League and South 750 varas of his N. W. corner, at 11285 varas branch, runs south, at 11,404 $\frac{4}{5}$  varas

set a post in earth mound for the sixth mile and  
 branded D. W. 6. M. from which a Live Oak 16 inch. in  
 diam. marked X bears N.  $5^{\circ}$  E.  $25\frac{2}{3}$  varas, at 11,708 varas  
 a Live Oak marked D. on both sides at 12,540 varas  
 intersected the north line of J. C. Bell's  $\frac{1}{3}$  of a  
 League, at 13,305 $\frac{2}{3}$  varas set a post in earth mound  
 for the seventh mile and branded D. W. 7. M. from which  
 a Post Oak 30 inch. in diam. marked K & D. bears S.  $51^{\circ}$   
 W. 62 varas, at 13,321 varas intersected the N. E. line of  
 John Adriance's  $\frac{1}{3}$  of a League and the S. W. line of the  
 J. G. N. R. R. Co's survey and N.  $20^{\circ}$  W.  $232\frac{1}{2}$  varas of  
 the S. W. corner of said J. G. N. R. R. Co's survey, at 13,867  
 varas head of the main Coleta, at 13,887 varas Road  
 from Yorktown to San Antonio, at 15,206 $\frac{2}{3}$  varas set a  
 post in earth mound for the eighth mile and branded  
 D. W. 8. M. at 15,966 varas head branch of Salt Creek,  
 runs east, at 16,630 varas intersected the S. W. line of  
 E. Dale's  $\frac{1}{3}$  of a League and S.  $80^{\circ}$  E.  $578\frac{1}{2}$  varas of his  
 S. W. corner, at 17,107 $\frac{1}{2}$  varas set a post in earth mound  
 for the ninth mile and branded D. W. 9. M. at 18,099  
 varas main Salt Creek, at 18,449 varas branch, runs  
 south, at 19,008 varas set a post in earth mound for  
 the tenth mile and branded D. W. 10. M. from which  
 a Musqt. 8. inch. in diam. marked X bears S.  $4^{\circ}$  E. 130.  
 varas, at 20,103 varas intersected the S. E. line of  
 said E. Dale's  $\frac{1}{3}$  of a League and S.  $10^{\circ}$  W.  $250\frac{2}{3}$  varas  
 of his N. E. corner, at 20,742 varas a Live Oak 14 inch.  
 in diam. marked D. on both side at 20,820 varas head

branch of little Salt Creek, at 20,908<sup>1</sup>/<sub>2</sub> varas set a post in earth mound for the eleventh mile and branded D. W. H. M. from which a Live Oak 12 inch. in diam. marked X bears S. 34<sup>1</sup>/<sub>2</sub>° E. 124 varas, at 20,926 varas branch, runs south, at 21,398 varas the north corner of John T. Haldeman's preemption survey, at 21,823 varas the North corner of J. W. Griffin's preemption survey, at 21,841 varas intersected the old District Line and S. W. line of Fr. Gonzales survey, set a post in earth mound and branded D. I. and stands S. 41° E. 3225<sup>1</sup>/<sub>2</sub> varas from a pile of Rocks, corner of a survey owned by Smale and supposed western corner of the Fr. Gonzales survey, from said pile of Rocks bears a Live Oak 16 inch. in diam. marked X S. 21<sup>1</sup>/<sub>4</sub>° E. 194 varas.

Returning to the West corner of De Witt County at a post in earth mound and branded D. W. & W. Cor. from which a Live Oak 16 inch. in diam. marked D bears S. 55<sup>1</sup>/<sub>2</sub>° E. 196<sup>2</sup>/<sub>3</sub> varas, Thence South 39° East at 114 varas branch, runs south, at 710 varas branch, runs southwest, at 1900<sup>1</sup>/<sub>2</sub> varas set a post in earth mound for the first mile and branded D. W. 1. M. from which a Live Oak 18 inch. in diam. marked D. bears N. 10° E. 14<sup>2</sup>/<sub>5</sub> varas, at 2478<sup>1</sup>/<sub>2</sub> varas a Live Oak 12 inch. in diam. marked D. on both side, at 2666<sup>1</sup>/<sub>2</sub> varas a Live Oak 18 inch in diam. marked D. on both side, at 2803 varas a Live Oak 15 inch. in diam. marked D. on both side, at 3393 varas branch

runs S. W. at 3801 $\frac{3}{5}$  varas set a <sup>Post</sup> ~~stake~~ in earth mound,  
 for the second mile and branded D. W. 2. M. from  
 which a Live Oak 14 inch. in diam. marked D. bears  
 N. 17 $\frac{1}{2}$ ° W. 12 varas, at 5052 varas middle of the M<sup>r</sup>  
 Tennell branch at 5364 varas Road from Yorktown  
 to Helena, at 5702 $\frac{2}{5}$  varas set a post in earth mound  
 for the third mile and branded D. W. 3. M. from which  
 a small Musqt. marked X bears S. 87 $\frac{3}{4}$ ° E. 32 varas, at  
 6002 varas branch runs north, at 7183 varas branch,  
 runs south, at 7603 $\frac{5}{5}$  varas set a post in earth  
 mound for the fourth mile and branded D. W. 4. M.  
 from which a small Musqt. marked X bears N. 76 $\frac{1}{2}$ ° E.  
 8 $\frac{2}{5}$  varas, at 8433 varas branch, runs S. W. at 9504  
varas set a <sup>Post</sup> ~~stake~~ in earth mound for the fifth  
 mile, from which a small Musqt. marked X bears  
 N. 55 $\frac{3}{4}$ ° E. 18 varas, at 9864 varas branch runs S. W.  
 at 10,664 varas a Hackberry 12 inch. in diam. marked  
 D on both side at 10,834 varas Salt Branch, at  
 10963 varas intersected the S. W. line of Tr. Seal  
 survey, at 11,404 $\frac{2}{5}$  varas set a post in earth mound  
 for the sixth mile and branded D. W. 6. M. from which  
 a Hackb. 12 inch. in diam. marked X bears West 33 varas  
 at 13,161 varas intersected the S. E. line of Tr. Seal's  
 survey and S. 41° W. 336 varas of the N. W. corner of a  
 survey made in the name of the heirs of W<sup>m</sup> Quinn  
 dec<sup>d</sup> at 13,305 $\frac{3}{5}$  varas set a post in earth mound  
 for the seventh mile and branded D. W. 7. M. from  
 which a small Musqt. marked X bears S. 74° W. 15 varas

at 13,368 varas branch, runs S.W. at 15,146 varas head  
 branch of the Oja de aqua, runs S.W. at 15,206<sup>2</sup> varas  
 set a post in earth mound for the eighth mile, and  
 branded D. W. 8. M. at 16,407 varas branch, runs S.W.  
 at 17,107<sup>5</sup> varas set a post in earth mound for the  
ninth mile and branded D. W. 9. M. at 18,502 varas  
 branch, runs east, at 19,008 varas set a post in earth  
 mound for the tenth mile and branded D. W. 10. M.  
 from which a small Musqt. marked X bears N. 1° W. 237.  
 varas, at 20,908<sup>7</sup> varas set a post in earth mound for  
 the eleventh mile and branded D. W. 11. M. at 22,308  
 varas entered Pasture of C. Jamlinson, at 22,809<sup>3</sup> varas  
 set a post in earth mound for the twelfth  
mile and branded D. W. 12. M. at 23,978 varas a  
 Live Oak 28 inch. in diam. marked D. on both side,  
 at 24,020 varas branch of the Cabeza runs east,  
 at 24,710<sup>2</sup> varas set a post in earth mound for  
 the thirteenth mile and branded D. W. 13. M. at  
25,753<sup>1</sup> varas N. 51° E. 3 varas a stone, at 26,010<sup>1</sup>/<sub>2</sub>  
 varas branch, runs east, at 26,175<sup>1</sup>/<sub>2</sub> varas South  
 corner of Jamlinson stable, at 26,611<sup>5</sup> varas set  
 a post in earth mound for the fourteenth mile  
 and branded D. W. 14. M. at 26,646 varas Cabeza, at  
 26,672 varas leaving Cabeza, at 27,024 varas Cabeza,  
 at 27,201 varas leaving Cabeza, at 27,322 varas Road  
 leading from Yorkston to the San Antonio River,  
 at 27,701 varas branch, about 100 varas S.W. the  
 mouth in the Cabeza, at 27,901 varas middle of the

Cabeza, at 28,486 varas branch, about 100 varas  
 North the mouth in the Cabeza, at 28,512 varas set a  
 post in earth mound for the fifteenth mile and  
 branded D. W. 15. M. from which a small Musqt. marked  
 X bears S.  $79\frac{3}{4}^{\circ}$  E.  $26\frac{1}{2}$  varas, at 28,812 varas N.  $51^{\circ}$  E.  
 30 varas Cabeza, at 30,337 varas middle of the Cabeza,  
 at 30,382 varas big waterhole in the Cabeza, at 30,412 $\frac{3}{5}$   
 varas set a post in earth mound, <sup>on the S W slope of the</sup> sixteenth  
Cabeza  
mile and branded D. W. 16 M. at 30,551 varas N. E.  
 bank of the Cabeza, at 31,512 varas a Live Oak 20.  
 inch. in diam. marked D. on both side, at 31,528 varas  
 branch, runs west, at 31,723 varas Road leading  
 from Yorktown to the San Antonio River, at 32313 $\frac{3}{5}$   
 varas set a post in earth mound for the seventeenth  
mile and branded D. W. 17. M. at 32,532 varas intersected  
 the S. E. line of the A. Lazo's survey and N.  $49^{\circ}$  E. 1600  
 varas of the southern corner of said survey, at  
32788 varas intersected the Boundary between  
De Witt and Goliad Counties, set a post in earth  
 mound for the South West corner of De Witt County  
 and branded D. W. & S. W. Cor. from which a Live  
 Oak 16 inch. in diam. mked D. bears N.  $84^{\circ}$  W. 130 $\frac{1}{5}$   
 varas and a Musqt. 8 inch. in diam. marked X bears  
 N.  $39^{\circ}$  E.  $26\frac{2}{3}$  varas.

Surveyed in December 1879. Variation  $9^{\circ}45'$  E.

F. M. Roberson	} Chains
Aug. Hartmann	
W <sup>m</sup> Hartmann	} Flag men and Markers.
W <sup>m</sup> Parker	
G. H. Schleicher	



I, C. G. Hartmann, appointed by the Hon. County Commissioners Court of De Witt County, State of Texas, at the August Term 1879 special County Surveyor to run the Boundaries between De Witt and Karnes Counties, do hereby certify under my oath of office, that the foregoing described survey <sup>of the boundaries between De Witt and Karnes Counties</sup> was made according to law, and that the limits, boundaries and corners, with the marks, natural and artificial are truly described in the foregoing fieldnotes and the maps accompanying these fieldnotes; also certify, that I have examined both, the fieldnotes and maps, and find them correct.

Given under my hand this the 29<sup>th</sup> day of Decbr. 1879.  
C. G. Hartmann  
Special C<sup>o</sup> Surveyor D. W. C. Texas

Certificate of Explanation.

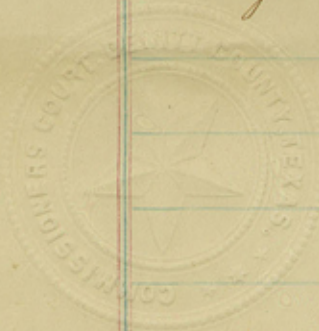
The commencing point of the foregoing described survey is S. 51° W. 69, 700 varas from the lower corner of a survey of  $\frac{1}{4}$  of a League of land granted to Jesse M<sup>c</sup> Coy, standing on the east bank of the Guadalupe river in Gonzales County.  
The boundary line between De Witt and Gonzales Counties where reestablished by the Surveyors of said Counties in March 1877 and a true measurement obtained as follows: counting from the said lower corner of Jesse M<sup>c</sup> Coy  $\frac{1}{4}$  of

a League S. 51° W at 42,595 varas bears S. 52° E. 88 varas the N. W. corner of Isaac Baker's 1920 acres survey, Thence S. 51° W. at 5264 varas intersected the old District line and S. W. line of Fr. Gonzales survey, Thence S. 41° E. 58 1/2 varas, Thence S. 51° W. at 21,841 varas the West Corner of De Witt County.  $42,595 + 5264 + 21,841 = 69,700$  varas. and state, that the old marked boundary line make an offset of 58 1/2 varas on the old District line.

Given under my hand this 29<sup>th</sup> day of December 1879.  
 C. G. Hartmann  
 Spec. C<sup>o</sup> S. D. M. C. Texas.

The State of Texas }  
 County of De Witt } I J. P. Baker Clerk of the County  
 County Court in and for said County do certify  
 that the above 13 lines and foregoing 8 pages  
 is a true and correct copy of the original on  
 file in my office and of record in the min-  
 utes of the Hon County Commissioners Court of said  
 County in Book B pages 499, 500, 501, 502, 503 & 504.

In witness whereof I hereto sign my name  
 and affix the seal of the Co Commissioners  
 Court of said County at office in De Witt  
 this the 17<sup>th</sup> day of January A D 1880  
 J. P. Baker



Plot & Filed notes  
of a Survey of  
the line between  
Seth & Karnes Co.

---

Rec'd Jan'y 27. 1880  
from Seth B &  
protest filed by  
Karnes Co.

---

Ans'd both. July 7. 1880

Suspen  
W. Maish  
Cove

