

The State of Texas } Field Notes of County Line
County of Dickens } Between Dickens and King
Counties } Beginning at South

West corner of Cottle County and N.W. corner of King
County this being also the S.E. corner of Motley
County and the N.E. corner of Dickens county
for corner a large stone 4 1/2 feet long 7, 10 at
top 10, x 13, inches at bottom marked S.E. N.E.
on north side edges facing North South East and
West, planted in East edge of a large branch
that runs South set in ground 2 1/2 feet a mes
marked N.S.E. brs N 37 1/2 W 46 7/10 as another 4 inch in
dia brs N 25 E. 28 1/2 W

1st Thence South at right angles with Base line
at 8000 crosses branch at 2750 crosses branch again
at 3750 crosses branch at 6000 crosses branch
again at 1454 crosses S.B. line of section 8. of H. Gibson
and 2630 west of the S.E. corner of said survey at
19000 as the first Mile Mound two pits N. & S
with Earth Mound between 2 feet high from which
a cottonwood 24 inch in dia marked R. 1. N. brs
South 2 1/2, E. 78, W

2nd Thence South an second mile at 11600 center of
North prong of Wichita River at 14830 west N.B.S. of section
9. of H. Gibson and 2630 west of his N.E. corner
at 19000 as the second mile Mound two pits N. & S
with Earth Mound 2 feet high between them

3rd Thence South an 3rd mile 19000 as two pits N. & S
with Earth mound between them

4th Thence South an fourth mile at 14960 the S.B. line
of section 10 of H. Gibson and 2750 west of the S.E.
corner of said survey at 19000 as the 4th mile
Mound two pits N. & S with Earth Mound 2 feet
high between them

5th Thence South on 5th mile at 15200 a wire fence
at 15790 a point on line which is 39350 west of the
Counter 52546
Dickens Co. Bdry. F& #4

- S. E. corner of section No 150 S, R, T, K at 1900 $\frac{2}{10}$ vs a set stone for the 5th Mile post.
- 6th Thence South on 6th Mile at 1920 vs a branch at 1900 $\frac{2}{10}$ vs two pits North and South with Earth Mound 2 feet high between them
- 7th Thence South on 7th Mile at 1900 $\frac{2}{10}$ vs a Mound of Earth and two pits in deep branch from which a China Marked K, 7, hrs South 78 $\frac{1}{2}$ E 13 vs another Marked D, 7, N, hrs South 58 $\frac{1}{2}$ W 46, vs;
- 8th Thence South on 8th Mile at 1900 $\frac{2}{10}$ vs two pits and Earth Mound ^{2 feet high} between them
- 9th Thence South on 9th Mile 1900 $\frac{2}{10}$ vs corner two pits N, 4, 8 with Earth mound between them from which a Mes Marked D, 9, N, hrs N. ¹⁵W, 28 vs another Marked K, 9, N, hrs N 70 $\frac{1}{2}$ E 10 vs
- 10th Thence South on 10th mile at 1940 vs bed of creek in a deep long canyon with china trees in it at 1900 $\frac{2}{10}$ vs two pits N 4, 8 with Earth Mound between them in head of Deep canyon running South East from which a Mes Marked D, 10, N, hrs N 52 $\frac{1}{2}$ W 62 $\frac{1}{2}$ vs a bunch of Hackberry hrs N 68 $\frac{1}{2}$ E 22 $\frac{1}{2}$ vs
- 11th Thence South on 11th Mile 1900 $\frac{2}{10}$ vs to two pits and Mound in head of draw from which a Hackberry Marked K, 11, N, hrs N 71 $\frac{1}{2}$ E 20 vs a Mes Marked D, 11, N, hrs N, 49, W 27, vs
- 12th Thence South on twelfth mile at 4.80 vs crosses canyon another at 15.10 vs at 1800 vs crosses at mouth of two ^{other} canyons at 1900 $\frac{2}{10}$ vs two pits North, 4, South and Mound on South slope of hill
- 13th Thence South on 13th Mile 1901 $\frac{2}{10}$ vs corner two pits and Earth Mound from which a Mes Marked D, 13, N, hrs South 72 $\frac{1}{2}$ W 62 $\frac{1}{2}$ vs a large gyp rock hrs N 41 $\frac{1}{2}$ W
- 14th Thence South on 14th Mile at 1900 $\frac{2}{10}$ see Earth Mound and two pits on North slope of Hill from which a Mes Marked D, 14, N, hrs South 73 $\frac{1}{2}$ W 20 vs another Marked K, 14, N, hrs N, 9, E 95 vs

- 15th Thence South on 15th Mill at 1703^{rs} a point on county line 7800^{rs} west of the S.E. corner of Cain Leagy at 1900^{rs} a large Gyp stone set in ground Marked D. 15 N. on west side and K 15 N. on East side from which a Mes Marked K. 15 N. by N. 26, E 36^{rs} another Marked D. 15 N. by N. 22, W. 81^{rs}
- 16th Thence South on 16th Mill at 1900^{rs} a mound and two pits from which a Mes Marked K. 16 N. by South 58, 84^{rs} another Marked D. 16 N. by N 62, W. 7^{rs}
- 17th Thence South on 17th Mill at 1520^{rs} center of bed of gourd fork of Mehita River at 1568^{rs} a point on county line 1812^{rs} west of the S.W. corner of Survey No. 261. Hambeck Pass at 1900^{rs} an Earth mound and two pits on North slope of hill from which a Mes 6 inch in dia by N 10 1/2, E 72^{rs} a tree Marked K. 17 N. another Marked D. 17 N. by South 57 W. 79^{rs}
- 18th Thence South on 18th Mill at 320 crosses creek running S.E. at 1900^{rs} a mound and two pits from which a Mes Marked D. 18 N. by N 64, W. 33^{rs} another Marked K. 18 N. by N 60 E 24^{rs}
- 19th Thence South on 19th Mill 1900^{rs} an earth mound and two pits on South Slope of Hill
- 20th Thence South on 20th Mill at 40^{rs} cross dry brushy creek course East at 1900^{rs} a mound and two pits on East Slope of Hill from which a Mes Marked K. 20 N. by N 4, E 80^{rs} another Marked D. 20 N. by N 13, W 90^{rs}
- 21st Thence South on 21st Mill at 1450 a point on county line 7762^{rs} W of the N.E. corner of Paul Anderson survey at 1900^{rs} an Earth Mound and two pits on South Side of Deep canyon
- 22nd Thence South on 22nd Mill at 800^{rs} crosses canyon at 1400^{rs} another canyon at 1900^{rs} an Earth mound and two pits on N Slope of Hill from which a Mes Marked D. 22 N. by S 9 3/4, E 57^{rs} another Marked K. 22 N. by S 63 1/2, E 28^{rs}
- 23rd Thence South on 23rd Mill at 1320^{rs} crosses a branch at 1900^{rs} a gyp stone set in ground on west side of high hill.

an Earth Mound and two pits from which a Mes. Mar.
K. 23, N. brs South 63° E, 19, vs another Marked D. 23, N. brs
South 37½° W. 26 vs

24th Thence South on 24th Mill at 550 vs a wire fence at
1900 vs a gyp Stone set in ground on west side of
high hill, and on East side of Deep Canyon Marked
on West side D. 24, N. on East side K. 24, N.

25th Thence South on 25th Mill at 1900 vs an Earth Mound
and two pits on West Slope of hill

26th Thence South on 26th Mill and Earth Mound and two
pits in valley from which a Mes. Marked D. 26, N. brs
N. 33, W. 175 vs another Marked K. 26, N. brs N. 43, E. 114 vs

27th Thence South on 27th Mill at 1033 vs crosses down creek
at 1900 vs a mound and two pits

28th Thence South on 28th Mill at 1330 vs crosses a branch at
1900 vs a large stone Mound on North slope of hill
Marked D. 28, N. on West side and K. 28, N. on East
side

29th Thence South on 29th Mill at 1650 vs a branch at 1840 vs
another branch at 1900 vs an Earth Mound and
two pits in forks of two canyons one coming in
from S. E. and the other from South West from which
a Mes. Marked D. 29, N. brs South 13, W. 15 vs a China tree
Marked K. 29, N. brs N. 60, E. 50 vs

30th Thence South on 30th Mill at 1256 vs crosses N. line of
Section 237 Blk. F. H. & T. C. R. R. Co. and 1323 vs E. of its S. W.
corner at 1900 vs the 30th Mill Mound which point is
6956 vs North and 3223 vs East of the S. W. corner of Section
241 same blk for corner 4 pits 8 feet apart N. 8, E. 4, W.
with an Earth Mound 4 feet high in center of said pits
with a Mes. post 4 inches square Marked X on E. and W.
sides planted in said Mound which is the S. E. corner
of Dickens and S. W. corner of King the S. W. corner of
Stoumwell and the N. E. corner of Kent Counties

The State of Texas } we the undersigned Surveyors
(Carrick Dickens } hereby certify that the above
and foregoing field notes truly
describe the county boundary line between Dickens
and King Counties with said lines and corners
as surveyed by us & survey commencing on the
15th day of February 1892 and finished on the 20th
day of Feb 1892 inclusive county line surveyed by
W. R. Norwood Dept Dist Surveyor Cross Land Dist
and Connections made by J. J. Hale Dickens County
Surveyor and C. J. Browder King County Surveyor

W. L. Hale } Chain
H. R. Neal } men on Co line

W. R. Norwood Dept Dist Surveyor
J. J. Hale Surveyor Dist
C. J. Browder Surveyor K. Co

5/ 5 (3)
Dickens Co. Boundary

Field Notes

County lines &
Boundary between
Dickens & King Cos
Texas.

Filed March 25th 1892

G. W. Beaulieu

Chief Clerk

Examined, and applied

3/30/92

Beaumont

OK B-

abstract corrected Oct 14/95

G. W. Beaulieu

The State of Texas }
 County of Dickens }

We the undersigned surveyors here by certify
 that the within and foregoing plat of the County boundary
 line between Dickens & King Counties and its connections
 with land lines and corners as surveyed by us is here with
 truly described. Survey commenced Feb 15, and finished
 Feb 19th A.D. 1891

W. B. Woodward Dept Dist surveyor Dickens Co
 J. J. Hale County surveyor Dickens Co
 County surveyor King Co
 ——— Dickens - King ———



County 52552

W. B. Woodward
 J. J. Hale
 County surveyor Dickens Co
 County surveyor King Co

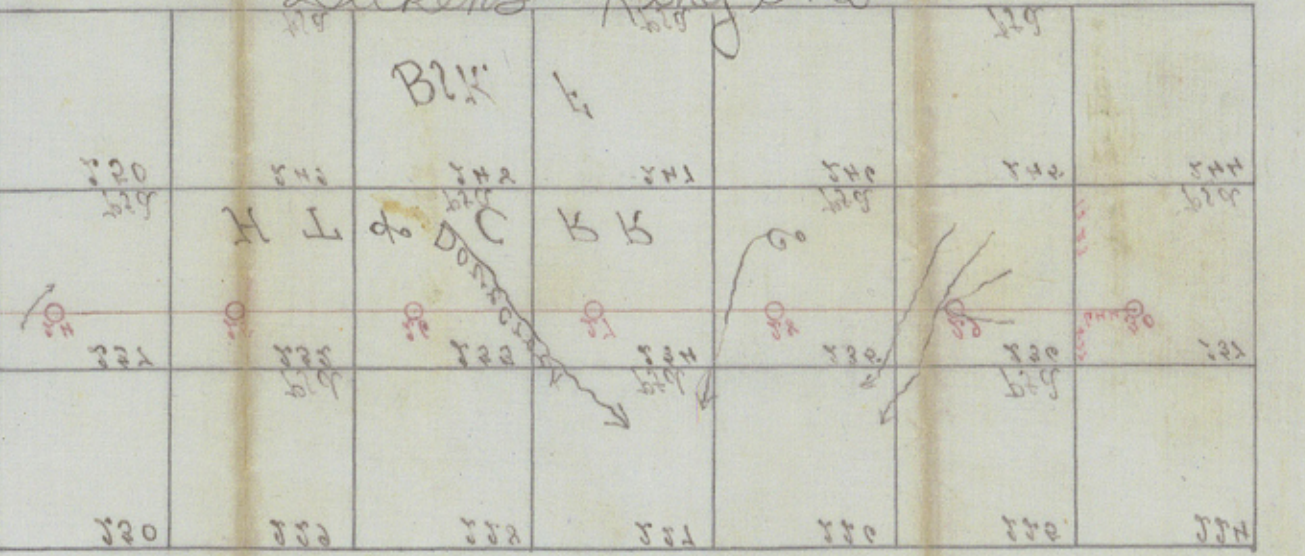
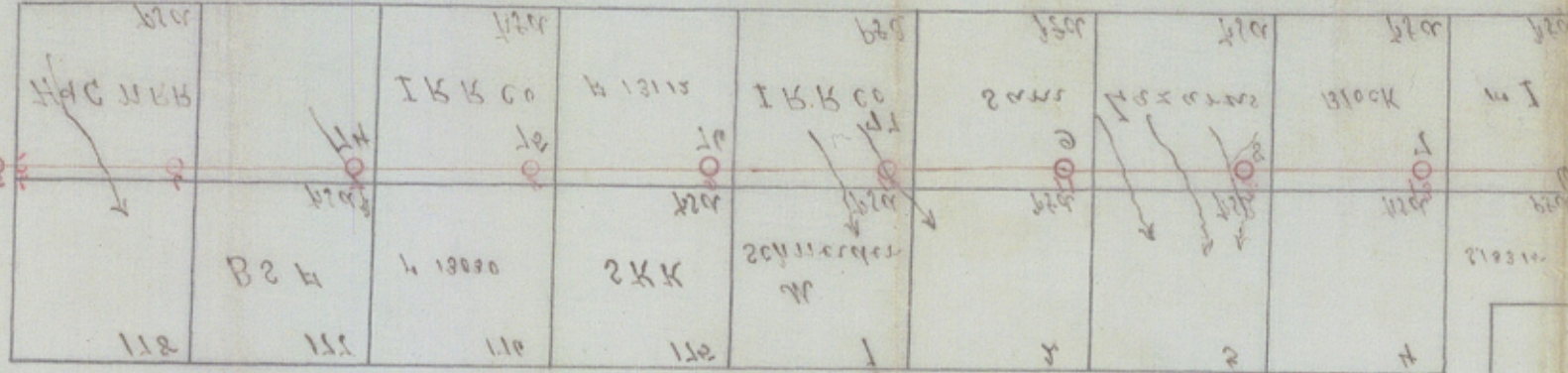
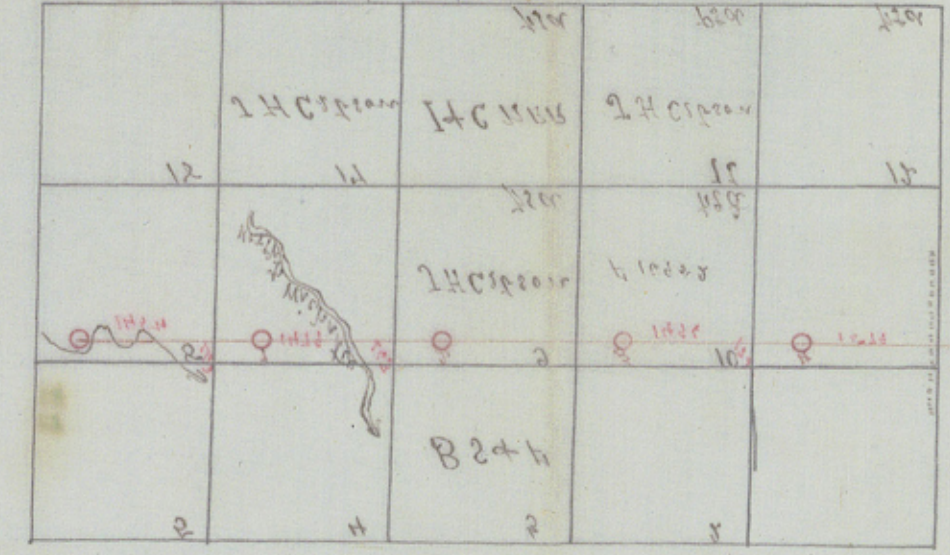
52553

DICKENS - KING

is marked in green and shall
 be marked in green and shall
 be marked in green and shall
 be marked in green and shall

is not a part of the
 is not a part of the
 is not a part of the
 is not a part of the

is not a part of the
 is not a part of the



East bdy line of
 Dickens County
 Filed March 25/1892

Dickens Co. Bdry line

(3)

Dickens - King line

Counter 52553