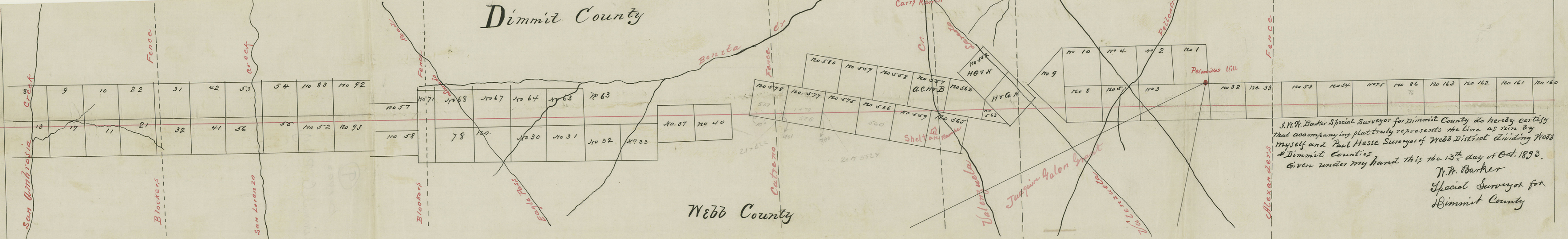


Dimmit County

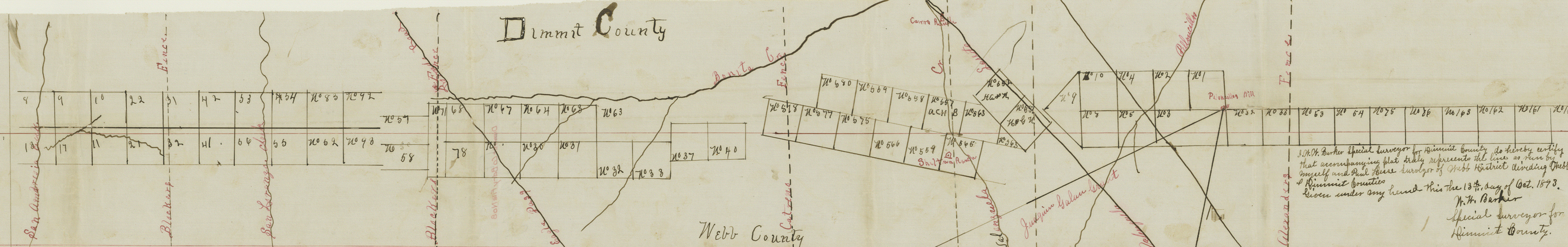
Webb County

La Salle County



J.W.W. Barker Special Surveyor for Dimmit County do hereby certify that accompanying plat truly represents the line as run by myself and Paul Hesse Surveyor of Webb District dividing Webb & Dimmit Counties
 Given under my hand this the 13th day of Oct. 1893.
 J.W.W. Barker
 Special Surveyor for
 Dimmit County

Dimmit County



J. H. Barker Special Surveyor for Dimmit County do hereby certify that accompanying plat truly represents the lines as run by myself and Paul Hesse Surveyor of Webb District dividing Webb & Dimmit Counties Given under my hand this the 13th day of Oct. 1893.
 J. H. Barker
 Special Surveyor for
 Dimmit County.

Asalle County

Corrected field notes of County line dividing
Dimmit from Webb Counties

Beginning at a mesquite post 4ft high marked
xxx D on West side "W" on South side and "L" on East
this post is on the N. line of S. E. corner of Dimmit, and is
the S. E. corner of Webb county

From which a Mesquite 12 in dia bro N. 25° 00'
marked D

Said post stands in Survey No 160, I & G. N. R. R. Co
Block A 1205 vs E. and 649 vs N from the S. E. corner
of Survey No 161, I & G. N. R. R. Co Survey.

Thence West at 1205 vs ~~xxx~~ E line of No 161, 649 vs
from the S. E. corner of same at 1901 vs set first
mile post.

West 1205 vs x E line of No 162, 649 vs N. of its
S. E. corner at 1917 vs set 2nd mile post.

Thence West 1205 vs x E line of Survey No 163, 649
vs N from its S. E. cor at 1907 vs set 3rd mile post.

Thence N. at 1205 vs x E line of Survey No 16, 649
vs N from its S. E. cor at 1901 vs set 4th mile post

Thence N. at 1205 vs x the E line of Survey No 25
649 vs N from its S. E. cor at 1901 vs set 5th mile post.

Thence N. at 1205 vs x E line of Survey No 54, 649 vs
N. of its S. E. corner at 1911 vs set 6th mile post.

Thence N. at 1205 vs x E line of Survey No 53, 649 vs
N from its S. E. cor at 1901 vs set 7th mile post.

Thence N. at 1205 vs x E line of Survey No 33, 649 vs
N. from its S. E. cor at 1901 vs set 8th mile post.

Thence N. at 1205 vs x E line of Survey No 32, 649 vs
N from its S. E. cor at 1901 vs set 9th mile post

Thence N. at 1205 vs x N line of Survey No 32, at 1873 vs

1 cross & line Juaguin Galan Grant line 1237⁰⁰ S
 2 ^{11 1/2} N. & corner on Pelouelos Hill at 1901 vs set 10th
 3 mile post 28 vs N. of said Grant line.
 4 Thence N. at 1911 vs set 11th mile post.
 5 Thence N. at 400 vs X N. & line of Juaguin Galan
 6 2588 vs from its N. & corner at 1096 vs X & line of survey
 7 No 5 at 1901 vs set 12th mile post
 8 Thence N. at 1205 vs X & line of survey No 8, 949 vs N.
 9 from its S & cor at 1981 vs set 13th mile post
 10 Thence N. at 1205 vs X & line of surr No 9 849 vs N
 11 from its S cor at 1856 vs X its S. & line and line
 12 of survey No 7 at 1901 vs set 14th mile post
 13 Thence N. at 1267 vs X S. & line of survey No 537 H & P
 14 G. N. R. R 907 vs 845 N. from it & corner at 1901 vs set
 15 15th mile post
 16 Thence N. at 1325 vs X & line of surr No 543 Morris &
 17 Carving 450 vs N from its S & cor at 1901 vs set 16th mile post
 18 Thence N. at 1845 vs X line of survey No 557 Morris &
 19 O. 75 vs N from its S. & cor at 1901 vs set 17th mile post
 20 Thence N. at 355 vs pass N. & cor of survey No 565 Morris
 21 & Humming at 1901 vs set the 18th mile post
 22 Thence N. at 362 vs X N. line of surr No 559 Morris &
 23 Cummings 275 vs S from its N. & cor at 1901 vs set 19th
 24 mile post.
 25 Thence N. at 375 vs X N. line of surr. No 556 741 vs S.
 26 from its N. & cor at 1901 vs set 20th mile post
 27 Thence N. at 552 vs cross N. line of surr. No 575 800 vs N
 28 from its S. & cor at 1901 vs set 21st mile post,
 29 Thence N. at 622 vs X line of surr. No 577 401 vs
 30 N from its S. & cor at 1901 vs set 22nd mile post.
 31 Thence N. at 515 vs pass S. & cor of surr No 578 at
 32 1901 vs set 23rd mile post.

Ba'

counter 52609

24
 2 Thence N. at 7500 x E line of Surv No 40 9250 S from its N.E. corner at 1901 or set 24th mile post
 25
 4 Thence N. at 7500 x E line of Surv No 37 9250 S from its N.E. cor at 1901 or set 25th mile post.
 6 Thence N. at 7500 the N line of said No 37 at the N.E. cor of Surv No 33. 1901 or 26th mile post.
 7 Thence with said N line at 1901 or 27th mile post
 8 Thence N. with N line of 32 & 31 at 1901 or 28th mile post
 9 Thence N. with N line of No 30 & 29 1901 or the 29th mile post
 10 Thence west with S line of No 64 & 63 1901 or set the 30th M.P.
 11 Thence N. at 12500 E line of Surv No 21 1901 or S from N.E. cor at 107500 x N line of Surv 27500 N from the S.E. cor of Surv No 57 at 1901 or the 32nd mile post
 13 Thence N. at 126600 x the N line of No 52 34500 S from the S.E. cor of Surv No 72 at 1901 or the 33rd M.P.
 14 Thence N. at 126600 x the N line of Surv No 52 34500 S from its N.E. cor at 1901 or set the 34th mile post.
 15 Thence N. at 126600 x the N line of Surv No 55-34500 S of its N.E. cor at 1901 or set 36th mile post.
 16 Thence N. at 126600 x E line of Surv No 56 34500 S of its N.E. cor of same at 1901 or set the 37th mile post
 17 Thence N. at 126600 x the E line of Surv No 41 34500 S of its N.E. cor at 1901 or the 38th mile post.
 18 Thence N. at 126600 x E line of No 21 34500 S from its N.E. cor at 1901 or set the 39th mile post.
 19 Thence N. at 126600 x the E line of Surv No 11 34500 S from its N.E. cor at 1901 or set 40th mile post
 20 Thence N. at 126600 x the E line of Surv No 12 34500 S from its N.E. cor at 1901 or set 41st mile post.
 21 Thence N. at 126600 x the E line of Surv No 13. 34500 S from its N.E. cor at 1901 or set 42nd mile post.
 22 Thence N. at 126600 x the N line of No 13 34500 of its N.E. cor at 1901 or set 43rd mile post
 23 Thence N. at 15600 set the S.W. cor of Summit County

35th mile seems to have been omitted

1 J. N. Barker do hereby certify that the foregoing
 2 corrected field notes ~~correctly~~ described, the lines
 3 of the surveys through which the county lines dividing
 4 Summit and Webb County as run by myself
 5 and Paul Hesse Surveyor of Webb District from
 6 the 3rd to the 17th of March 1892, passed and the
 7 same ^{are} duly recorded in Vol 4, pages 218, 219, 220
 8 and 221 of the records of my Office
 9 Given under my hand this 13th day of Oct 1893.
 10 J. N. Barker
 11 Special Surveyor
 12 Summit County.

2588
 618
 20704
 2588
 15528
 1599387
 182908
 47070
 45160
 18784

Summit Co. Bdry. 9
 Summit County

South Boundary

Filed Oct 16th 1893
 Examined, approved
 and applied
 Oct 19/93 G. W. Beaumont

B-4

Counter 52602

Ba³

Center