

The State of Texas }
Dimmit County } By virtue of an
order of the Commissioners Court of Dimmit
County at their November term 1893,
to run mark and erect mile posts on the
East line of Dimmit County dividing Dimmit
from LaSalle County, (the Commissioners Court
of LaSalle County having been duly notified
of said order and time and place when
the work would begin, and the point of
beginning and declining to participate in the
work,) J. W. W. Barker Special Surveyor for
Dimmit County, began at the S.E. Corner
of Tris the N.W. Corner of LaSalle and S.E.
Corner of Zavalla Counties, At an ancient
post hewed square about $3\frac{1}{2}$ feet high
(Marked FL XXXVI and Cor) on which I
cut ZD from which a mesquite marked
Z brs N 52 E. $5\frac{1}{2}$ vrs, said tree being 12 inches
in diameter.

This Post is 1405 vrs East and 739 vrs,
South from the N.W. Corner of Survey No. 24
D & G N. R. R. Co. Block 13.

Thence South at 1338 varas the South line
of section No. 24 D & G N. R. R. Co. Sur. at 434
vrs west from its S.E. Corner on the North line
of section No 5 Block No. 5 D & G N. R. R. Co.
Survey in all South 1900 vrs set 1st M.P.

Thence South at 1200 vrs cross South line
of section 5 into section 11 at 1500 vrs ^{cross} section
S.W. line into section 10 in all South 1900 vrs
set the 2nd M.P.

Thence South at 1600 vrs cross the line of
Survey No 15 D & G N. R. R. Co Survey in all
South 1900 vrs. set the 3rd M.P.

Thence South at 1900 or set 4th M. Post
Near the N.E. Corner section No. 23 & N.W. Cor
of section No 22

Thence South at 1900 or set the 5th M.P.
Thence South at 2000 ors cross the line No 26
950 ors from its N.E. & N.W. Corners in all
South 1900 ors set the 6th M.P.

Thence South at 4500 ors pass near and west
of the N.E. Corner of section No. 36 in all South
1900 ors set the 7th M.P.

Thence South at 800 ors pass over the N.E. Corner
of section No 27 of Poitevant in all South
1900 ors set the 8th M.P.

Thence South at 1000 ors the South line of sec.
No 27 950 ors N 60 E from its S.W. Corner as shown
by Mr. M^c Mains who owns sec. No 26 in all South
1900 ors set the 9th M.P.

Thence South at 900 ors Spear Creek at 1232
ors the S line section 25 and North line of section
No 24. 450 ors S 60 W from its N.E. and 1200 ors
N 60 E from the S.E. Corner of section No 26 (these
Corners shown by Mr. M^c Mains, who lives ~~on~~
the up on the land) in all South 1900 ors set
10th M.P. Thence South at 1538 ors the S line
of sec. No 24 and North line of section No 22
410 ors N 60 E from their S.W. and N.W. Corners,
(shown by Mr. Chamberlain who lives on section
22) in all South 1900 ors set 11th M.P.

Thence South at 1258 ors a mesquite mark L
at 1471 ors North line of Simonds (Small) Survey
4300 ors W. from the N.E. Corner in South 1900
ors set up Large Stone for 12th M.P.

Thence South at 2710 ors S line of Simonds and
N line of Avants Survey at 1230 ors the N line
of Amos Casors Survey 430 ors W. from his N.E. Corner

Shown by T Gardner in all South 1900 ors
Set the 13th M.P.

Thence South at 1900 ors set the 14th M.P.

Thence South 1550 ors nucleus River a live
oak on N Bank (with D D) in all South
1900 ors the 15th M.P. in years Cardinas Grant,

Thence South at 1900 ors set the 16th M.P.

Thence South at 1900 ors set 17th M.P.

Thence South at 1900 ors set 18th M.P.

Thence South at 1900 ors set 19th M.P.

Thence South at 1900 ors set 20th M.P.

Thence South at 260 ors the N.E. Corner of
T.C. R.R. Co Survey No 2 State in all South
1900 ors set 21st M.P.

Thence South at 1000 ors the N.E. Corner of
T.C. R.R. Co Survey No 1 in all South 1900 ors
set 22nd M.P. Thence South at 1600 ors pass
S.E. Cor of T.C. R.R. Co. Survey No 1 at 1900 ors set
23rd M.P. Thence South passing over S.E.
Corner of M.C. M. Culloch and N.E. Corner of
R.H. M. Donalds Survey in all South 1900 ors
set the 24th M.P.

Thence South at 720 ors M Donalds S.E.
Corner at 1900 ors set the 25th M.P.
on E.L.M. Donalds East line.

Thence South at 1700 ors J. Studhams S.E.
Corner at 1900 ors set the 26th M.P.

Thence South 1900 ors the 27th M.P. in Day
Ld. & Cattle Co. Survey

Thence South at 1570 ors the South line of
D. L. & C. Co. Survey and N line of D & G M. R. Co.
Survey No 158, 594 ors W from the N.E. Corner
of latter, at 1900 ors set 28th M.P.

Thence South at 1855 ors cross South line of
Sd 158. 595 ors W of its S.E. Corner in all South

1900 or set the 29th M.P. Thence South
Crossing south line of sec No 151 and
N line of sec No 160 I & G N R. R. Co surveys
in all south 1900 or the N.E. Corner of Webb
County and S.E. Corner of Dimmit County
Set a Post 5 feet high 10 in Diameter marked
D W L & X X X Surveyed 10th 11th 12th 13th 14th 15th 16th
17th 18th of Jan 1894

L. L. Bell } chain
Arch Brown } Carriers

I W. W. Barker Surveyor for Dimmit Co. do
herely Certify that the above field notes dividing
Dimmit from Tsalale Co. was made according
to law the are all hewn and marked in
Roman Characters representing the number
of miles on the north side with D on the
west and L on the East sides of Posts

They are permanently set in the ground
made of Mesquite timber, This line follows
very closely the old line run by Carr and
whichever since it was run, has been
regarded by both Counties as their division line

The Magnetic variation is 8° 15' that being
the course of Carrs line

Given under my hand this the 8th day
of May 1894

Recorded in Book no 40w } W. W. Barker
pages 222, 223, & 224 } Surveyor

The Post described by Mr. Cardley and Herman
is not located properly, hence is not called for in
this field notes, they evidently were mistaken

This Call was right but they were mistaken in their
position on the ground

W. W. Barker

The State of Texas }
County of Dimmit } I Jos C. Dickens Clerk
of the County Court in and for said County & State
do hereby Certify that the above and foregoing
is a true and Correct Copy of the Report
made by W. W. Barker as Special Surveyor
to survey East County line and that the same
has been recorded in the minutes of
County Commissioners Court, in Book no 2
on pages 97, 98 & 99

Given under my hand and seal of said Court
this the 7th day of June A.D. 1894

Jos C. Dickens
County Clerk D. Co Tex

55

o/ Dimmit Co ~~11~~
E.B. line Dimmit Co.

East boundary line

Examined & Approved
June 11th 1894
G. N. Beaumont

Filed June 11th 1894,

Approved June 11th 1894
G. N. Beaumont

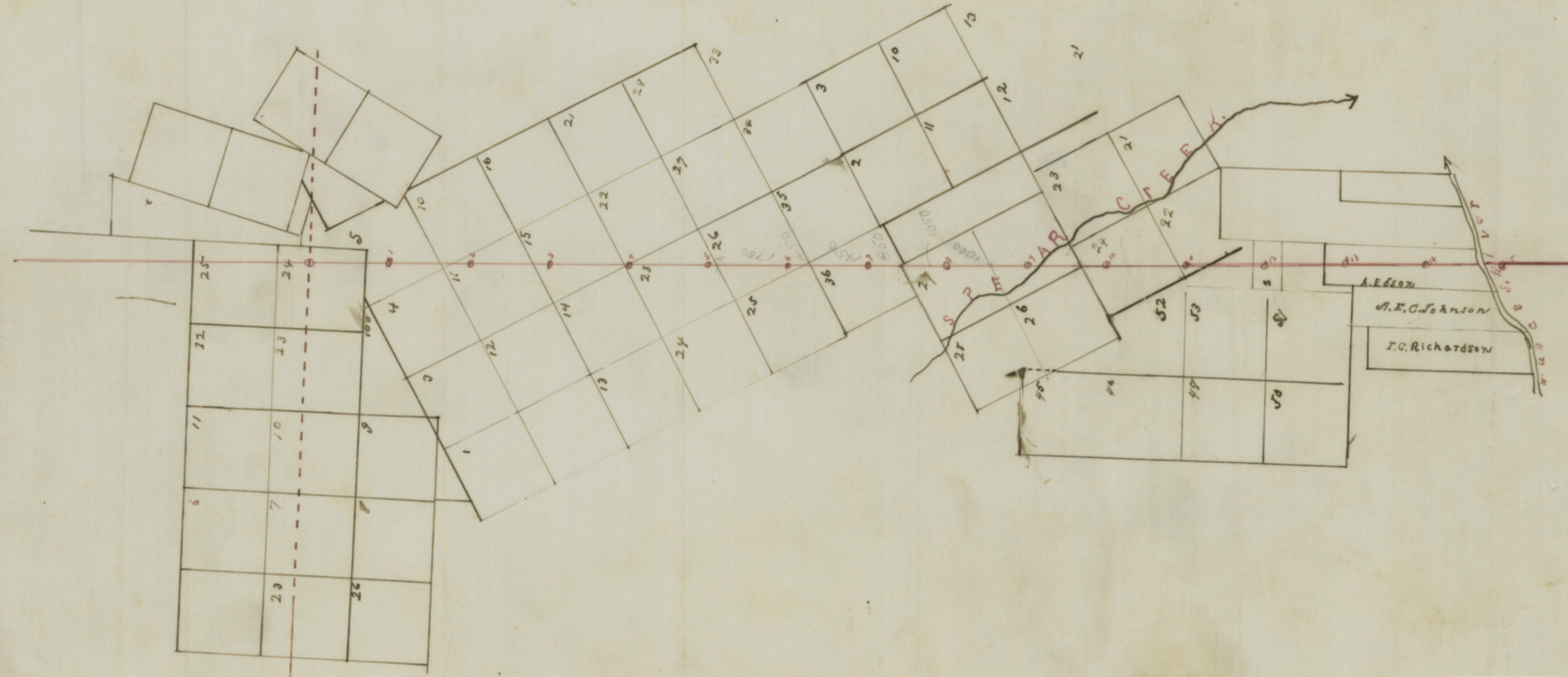
Dimmit - LaSalle line

[Faint handwritten text, possibly a signature or name]

[Extensive handwritten text, likely a survey description or legal notice]

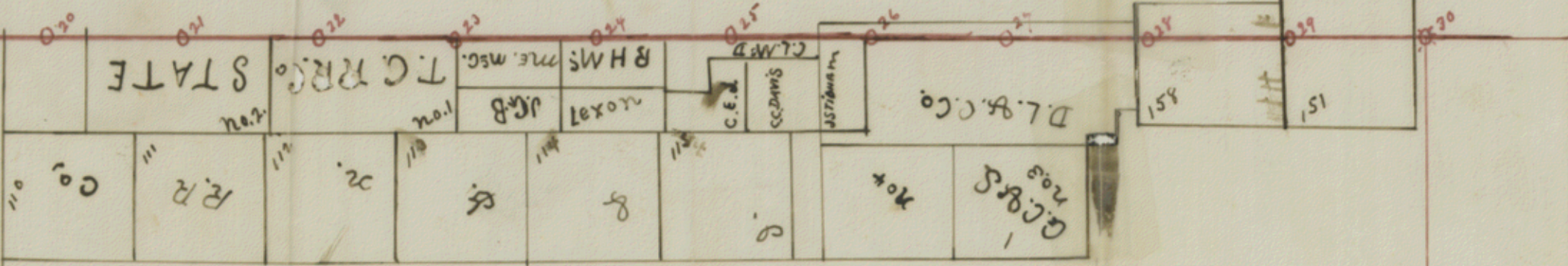


42.50



Jesus Cardinas

Dimmit Co. Blg



LASALLE CO.

Dimmit Co

Webb Co.