

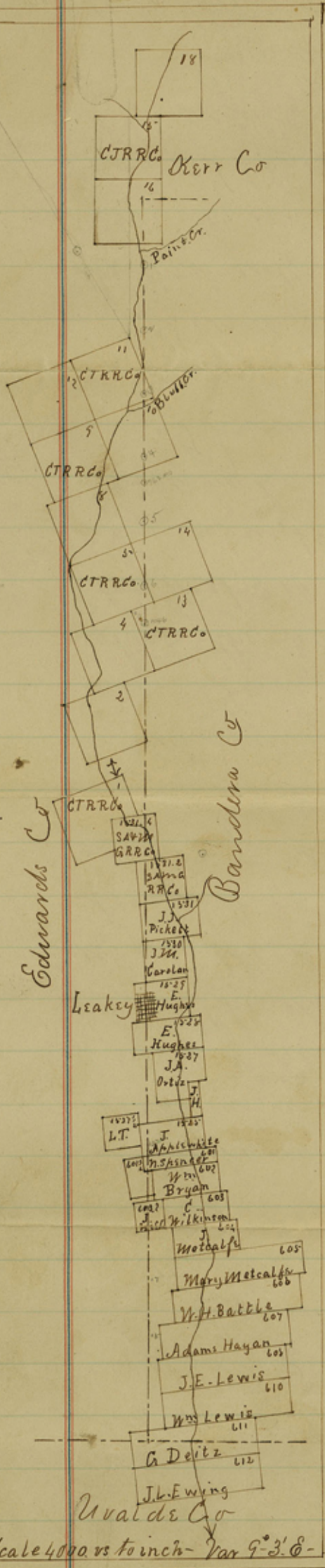
State of Texas }  
 County of Edwards

Field notes  
 of the survey of the boundary  
 line between Bandera and  
 Edwards Counties made under  
 an order of the Commissioners  
 Courts of said Counties, and in  
 accordance with the provisions  
 of an act establishing, and  
 prescribing the manner of  
 ascertaining the boundaries of  
 Counties, "Approved April 23<sup>rd</sup> 1879."

Beginning at a sk md  
 set for the N.W. corner of  
 Bandera and the S.W. corner  
 of Kerr Counties from which a  
 Shin Oak 5" brs N37°W 24 7/8 vrs  
 a D<sup>o</sup> 5" brs N39 1/2°W 27 vrs, and  
 from which corner the N.E. corner  
 of survey N<sup>o</sup> 18 C.T.R.R. Co  
 brs N22°E 4800 vrs

Thence South 1900 vrs to  
 a sk md from which a Shin Oak  
 5" brs S16 3/4°W 46 3/5 vrs, and 5 1/4" brs S38 3/4°W 40 vrs -

Thence South 1400 vrs to  
 the South bank of Paint Creek  
 1488 vrs to a sk md on a



Scale 4000 vrs to inch - Var 9-3'-0"

Edwards Co Entry Line 27c

2 road from which the junction of said Creek and the Rio River brs S 46° W 200 vrs, 1900 vrs to a rk md in valley near the foot of a hill and 90 vrs East of said River from which a Shin Oak 6" brs S 1 1/4° E 1 1/2 vrs -

3 Thence South 400 vrs crossing bend of the Rio River, 1900 vrs to a rk md from which a L O 4" brs S 1/4° E 43 vrs, a D 4" brs S 75° W 18 vrs -

4 Thence South 600 vrs, crosses Bluff Creek 600 vrs above its mouth, 1900 vrs to a rk md on a branch of Bluff Creek from which a Cedar 8" brs S 25 1/2° W 17 1/2 vrs -

5 Thence South 762 vrs to a point from which the S.W. corner of survey N° 10 C T R R Co brs West 804 vrs 1900 vrs to a rk md on a high bluff on branch of Rain valley -

6 Thence South 1900 vrs to a rk md in Rain valley from which a S.O. 2" brs S 5° E 8 vrs -

7 Thence South 1146 vrs to a point from which the N.E. corner of survey N° 4 C T R R Co brs West 216 vrs, 1260 vrs crosses East slope of Lone Mountain, 1900 vrs to foot of said Mountain from which a L O 10" brs N 78 1/2° W 7 vrs a Cedar 2 1/2" brs N 30 1/2° W 5 vrs -

8 Thence South 1900 vrs to a rk md on a mountain side from which a L.O. 5" brs N 38° W 27 vrs -

9 Thence South 1900 vrs to a rk md on the West side of a mountain and 300 vrs East of the Rio River

10 Thence South 1900 vrs to rk md from which a L O 48" brs S 58 1/2° W 180 vrs -

Thence South 636 vrs to a rk md on the Rio Road from which a Pecan 12"

Edwards v. Edry. Vol. 47c

brs S 38 1/2 E 16 vrs, 692 vrs to a point on the South line of survey N<sup>o</sup> 1531 1/2 S.A. + M G R R Co, and 483 vrs S 83 W from its S E corner, 1000 vrs to the Firis River, 1530 vrs to an old ditch, 1740 vrs crossing ditch, 1900 vrs to a rk md from which a L 0 20" brs S 47 1/2 W 6 vrs, a D<sup>o</sup> 24" brs S 65 W 4 vrs -

11

Thence South 1228 vrs to a point from which the S W corner of survey N<sup>o</sup> 1531 "J. J. Pickett brs West 80 vrs, 1900 vrs to a rk md from which a L. O. 12" brs S 45 1/2 E 19 vrs, a Cedar 12" brs S 30 1/4 E 17 vrs

12

Thence South 1100 vrs to a point, from which the N E corner of the Public Square in the Town of Leakey brs West 65 vrs, 1250 vrs a point from which the Leakey

13

Academy brs West 15 vrs, 1900 vrs to a rk md from which a L. O. 10" brs S 25 E 15 vrs a D<sup>o</sup> 5" brs S 79 E 20 vrs.

14

Thence South 676 vrs to a point from which the N W corner of survey N<sup>o</sup> 1527 J. A. Curtis brs East 75 vrs, 1900 to a rk md from which a L. O. brs S 13 1/2 W 20 vrs, a D<sup>o</sup> 5" brs S 12 1/2 E 12 vrs. Thence South 185 vrs to a point from which the S W corner of survey N<sup>o</sup> 1525 J.

15

Appelwhite brs West 156 vrs, 1900 vrs to a rk md from which a L O 6" brs N 18 1/2 W 32 vrs, a D<sup>o</sup> 5" brs N 48 1/2 W 28 vrs.

Thence South 414 vrs to a point from which the N W corner of survey N<sup>o</sup> 602 W<sup>ms</sup> Bryan brs East 104 vrs, 1273 vrs to a point from which the N W corner of survey N<sup>o</sup> 603 C. Wilkinson

16

brs East 540 vrs, 1900 vrs to a rk md from which a L. O. 8" brs S 64 E 47 vrs, a D<sup>o</sup> 10" brs S 20 1/4 W 57 vrs -

Thence South 290 vrs to a point from which the N W corner of survey N<sup>o</sup> 602 J. Metcalfe

17

brs East 740 vrs, 1900 vrs to a rk md in a valley

5 Filed May 12<sup>th</sup> 1884  
 at 10 o'clock am  
 L. B. Jackson  
 134 signed by both surveyors  
 J. M. Beardon

from which a S 0 4" brs N 29 1/2 W 7 1/2 vrs, a D = 3" brs N 21 1/2 W 9 vrs -  
 Thence South 657 vrs crosses top of a range  
 1280 vrs to a point from which the N. W.  
 corner of survey N<sup>o</sup> 607 Adam Hagan brs  
 East 460 vrs, 1900 vrs to a rk md in a valley  
 from which a S 0 6" brs S 7 1/4 W 78 vrs

Thence South 550 vrs crossing top of a  
 round mountain, 1900 vrs to a rk md in the  
 valley of Buffalo Creek from which a L 0 10"  
 brs S 6 0 E 20 vrs, a D = 8" brs S 6 7 E 21 vrs

Thence South 270 vrs crosses Buffalo Creek  
 950 vrs to a rk md 4 feet high on the line of  
 Uvalde County and 20 miles and 1745 vrs from  
 its N E corner, for the S W corner of Bandera  
 County, and the S E corner of Edwards County  
 and from which the S. W. corner of survey N<sup>o</sup>  
 610 H<sup>m</sup> Lewis brs N 55 E 612 vrs and a L. C.  
 20" brs N 31 W 65 vrs

Surveyed March 17<sup>th</sup> to 22<sup>nd</sup> 1884  
 Bearings marked B. E.

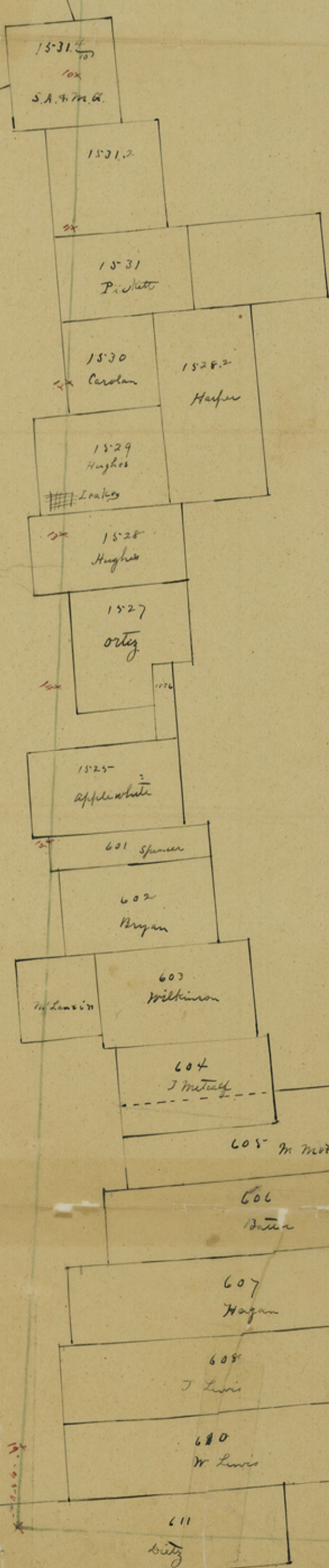
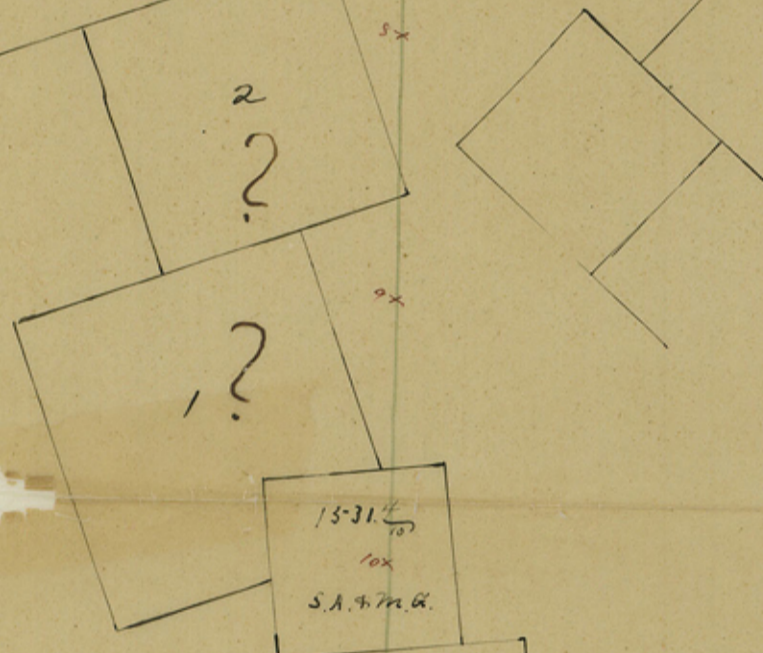
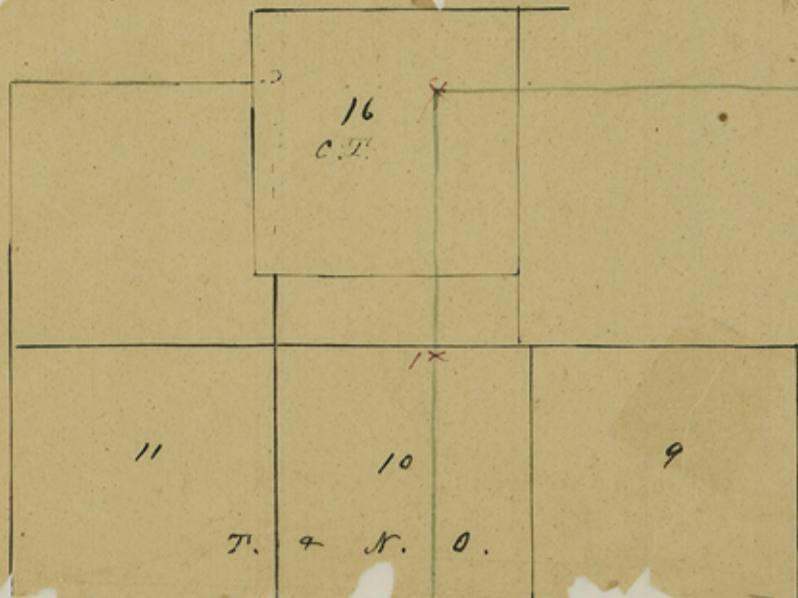
We T. B. Reeves appointee of the Court of  
 Edwards County and Louis Polk appointee of the  
 Court of Bandera County to survey the boundary  
 line between the Counties above named do hereby  
 certify that the said survey was actually made  
 in the field and according to law and that the  
 limits boundaries and corners are truly described  
 in the foregoing plat and field notes  
 Given under our hands this the 2<sup>nd</sup> day  
 of May A. D. 1884 T. B. Reeves  
 Louis Polk

Read June 5<sup>th</sup> 84  
 R. E.  
 Edwards Co. Bdry.

THE STATE OF TEXAS, }  
 COUNTY OF Edwards } I, L. B. Jackson, County Clerk,  
 in and for said County, do hereby certify that the foregoing field notes & plat of boundary line dated  
 the 2<sup>nd</sup> day of May 1884, with its certificates of authentication, was filed for Record in  
 my office the 12<sup>th</sup> day of May A. D. 1884, at 10 o'clock a. M., and duly Recorded  
 the 20<sup>th</sup> day of May A. D. 1884, at 4 o'clock p. M., in the Records of said County,  
 in Vol. 1 on Page 22 & 23

WITNESS my hand and the seal of the County Court of said County, at office in  
 the Town of Leakey Texas, the day and year last above written.

L. B. Jackson  
 Clerk County Court, Edwards County.  
 By J. M. Beardon Deputy.



*Copy of abandoned presumption claim of Alexander  
Hagard has been received from as the  
T. S. corner of 1603 B+ 15 11 see location  
1601.4 see all and all the survey  
including this area from there*