

The following tabulation shows the Surveys crossed and the acreage in each County:

Original Survey	Abstract No.	Acreage		Total
		Ellis County	Johnson County	
Sena Manger x	692	302.0	285.0	587.0 Hill 53 = 620 A
J. R. Mitchisen	691	12.4	307.6	320.0 ✓
David Smith	988	572.4	34.9	607.3 ✓
J. D. James	471	0.5	79.7 80.25	80.25 ✓
Thomas Shockley	1022	279.7	40.3	320.0 ✓
Laben Menefee	671	130.6	509.4	640.0 ✓
John Morris	774	155.6	4.4	160.0 ✓
Richard Rhodes	894	688.0	3917.5	4605.5 ✓
Jackson Smith	962	375.25	191.5	566.7 567 ✓
Leeman Kelsey	594	2453.9	498.3	2952.2 ✓
J. T. Cadenhead	201	206.0	1074.0	1280.0 ✓
M. E. P. & P. R.R. Co.	760	606.6	33.4	640.0 ✓
Radford Berry	42	1715.2	1783.2	3498.4 ✓
William Hill	1293	19.4	620.6	640.0 ✓
Allen Larrison	1294	95.2	1676.1	1771.3 ✓
Joseph Stewart	961	2083.8	219.0	2302.8 ✓
J. H. Working	1161	3.8	316.2	320.0 ✓
Isaiah Gardner	1291	65.8	254.2	320.0 ✓
I. Gardner	1292	22.5	35.5	58.0 ✓
Edward West	1296	0.8	320 318.2	320.0 ✓
B. F. Howard	513	262.5	34.5	297.0 ✓
S. M. Blair	135	125.0	196.5	321.5 ✓
Cresanta Vela	1102	15.5	601.5	617.0 ✓
Joseph Lawrence	616	1476.8 1476.2	0.8	1476.2 ✓
Lewis Russell	935	35.0	285.0	320.0 ✓
Milton Gregg #	385	108.5	6.1	114.7 Tarrant 65.9 = 180 A ✓
TOTAL		11810.7	13325.0	25135.7

x 53.0 acres of this Survey in Hill County
 # 65.9 acres of this Survey in Tarrant County.

We are attaching hereto map showing the location of the county line with respect to surveys crossed and location of markers or monuments recently placed.

W. A. Spalding
 W. A. Spalding, Special Surveyor
 for Ellis County

T. J. Palm
 T. J. Palm, County Surveyor
 of Johnson County

Abstd. in Vol. 62
 Feb. 21, 1940
 R.B.N.

Waxahachie, Texas - November 13, 1939.
 Sheets 6 and 7 Revised January 23, 1940.

Ellis Co. Bdry (34) counter 52972

February 23, 1940

Tax Assessor Tarrant County
Fort Worth, Texas

Dear Sir:

The new boundary line between Ellis and Johnson Counties, recently surveyed by W. A. Spalding for Ellis, and T. J. Palm for Johnson County, shows the acreage-division between those two counties and yours, as follows: 108 acres in Ellis, 6.1 acres in Johnson, and 65.9 acres in Tarrant. Your Abstract number is 560.

The above division will appear in the next printed volume of State Abstracts.

Sincerely yours,

BASCOM GILES
COMMISSIONER OF GENERAL LAND OFFICE

RBW:jms
Rob. 1 - 1033

Ellis Co. Bdry (3c)

Counter 52973

February 23, 1940

Tax Assessor Hill County
Hillsboro, Texas

Dear Sir:

The new boundary line between Ellis and Johnson Counties, recently surveyed by W. A. Spalding for Ellis, and T. J. Palm for Johnson County, shows the acreage-division between those two counties and yours, as follows: 302 acres in Ellis; 53 acres in Hill, and 285 in Johnson. Your Abstract number is 600.

The above division will appear in the next printed volume of State Abstracts.

Sincerely yours,

BASCOM GILES
COMMISSIONER OF GENERAL LAND OFFICE

RBW:jms
Rob. 1 - 1033

Ellis Co. Bdry 3c

Counter 52974

February 23, 1940

*Carbon to
Assr of Johnson Co*

Tax Assessor Ellis County
Waxahachie, Texas

Dear Sir:

The inclosed photostatic print is a reproduction showing the acreage-division of the various tracts of land thru which the new boundary line runs between Ellis and Johnson Counties as surveyed by W. A. Spalding, Special Surveyor of Ellis, and T. J. Palm, County Surveyor of Johnson County, as the same will appear in the next printed volume of State Abstracts.

Carbon of this letter and photostat print *are* being mailed the Assessor of Johnson County at Cleburne.

Very respectfully,

BASCOM GILES
COMMISSIONER OF GENERAL LAND OFFICE

RDW:jms
cc - Tax Assessor Johnson Co.
Cleburne, Texas

Enc.

Ellis Co. Bdry 3c
County 52975

February 21, 1940

Carbon to Palm

Mr. W. A. Spalding
Waxahachie, Texas

Dear Sir:

Enclosed find photostat print of the acreage-division of lands along the recent survey of the Ellis-Johnson boundary line as made by you and Mr. T. J. Palm, County Surveyor of Johnson County, showing the acres in each tract of land in those counties thru which the line runs, as the same will appear in the next printed volume of State Abstracts.

As will be noticed, a few minor changes have been made from your figures; viz.,

The J. D. James 80.25 acres all in Johnson;
The Richard Rhodes 567 acres;
The Edwards West 320 acres all in Johnson, and
The Joseph Lawrence 1476 acres all in Ellis
County.

Carbon of this letter, and photostatic copy, are being mailed Mr. Palm at Cleburne.

I wish to congratulate you two gentlemen on this excellent piece of work and the tracing.

Sincerely yours,

BASCOM GILES
COMMISSIONER OF GENERAL LAND OFFICE.

RBN:jms
cc - Mr. T. J. Palm
Cleburne, Texas

Ellis Co. Bdry.

3c

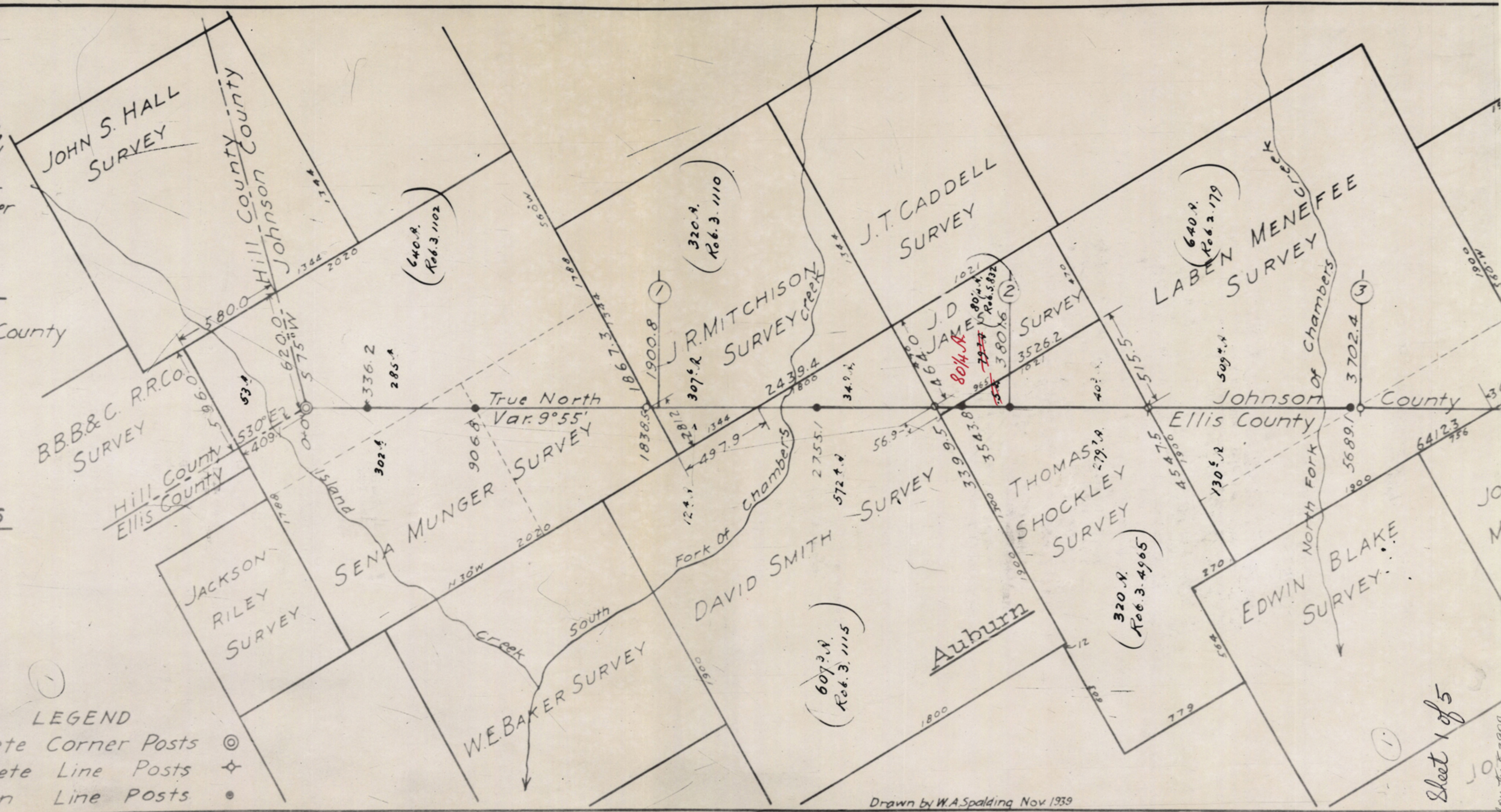
Counter 52976

the County Court of
 that the line between
 reved March to May 1939,
 Johnson County and
 - Ellis County, as shown
 red Nov. 13 1939 was ap-
 Johnson County by order
 record in Volume 15
 ty Court.
 of said Court this the
Frank Clark Jr.
 County Court of Johnson County

Johnson Counties
May 1939 By
on County
Ellis County
Land Office

W.A. Spalding
P. Clunn

LEGEND
 Concrete Corner Posts \odot
 Concrete Line Posts \diamond
 Wooden Line Posts \bullet



Drawn by W.A. Spalding Nov. 1939

Sheet 1 of 5



160 A.
Rob. Pre. 230
4 A.R.
3917.5 A.
4605.5 A.
Rob. 1.721

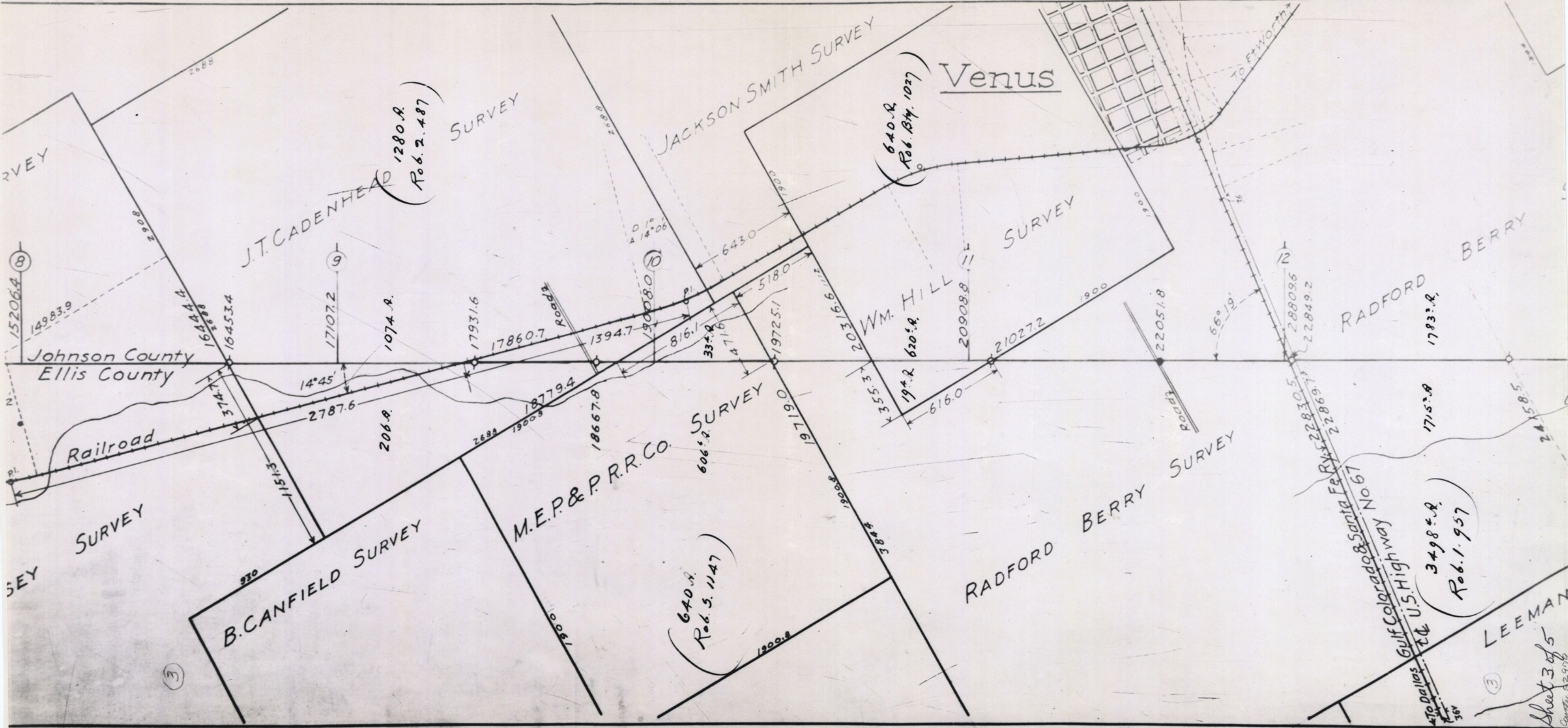
JOHN MORRIS SURVEY
155.5 A.
6753.6
63.1
6760.4
118.8
212.80
7603.2 A
688. A.

JOHN F. THRASH SURVEY
156
212.80
SIDNEY O. PENNINGTON SURVEY

RICHARD
RHODES SURVEY
9504.0 A
8911.1
10255.3
Cottonwood Creek
368.6
10973.5
11404.8 A
SIMEON ODOM SURVEY

JACKSON SMITH
375.5 A.
567 A.
Rob. 1.958
191.5 A.
704.4
2381
N. 30° W.
H.W. GRIFFITH SURVEY
SURVEY
12907.8
12916.1
12924.7
548.6
2021
JESSE JACKSON SURVEY
To Houston

J.C. PILLOW SURVEY
1341
4770
LEEMAN SURVEY
2814
4983 A.
2453.9 A.
2952 A.
Rob. 1-1009
Griffith
JAS BATEMAN SURVEY
LEEMAN KELSEY SURVEY
14513.4
15206.4 A
14983.9
Johns Ellis
Ra
International-Great Northern
Griffith
KELSEY



15206.4

14983.9

Johnson County
Ellis County

Railroad

374.7

11511.3

930

16444.4

16453.4

J.T. CADENHEAD
(1280 A.
Rob. 2. 487)

17107.2

1074. A.

B. CANFIELD SURVEY

17931.6

17860.7

1394.7

SURVEY

19008.0

M.E.P. & P.R.R. CO. SURVEY

606. A.
Rob. 5. 1147

19719.0

1900.8

1900.8

JACKSON SMITH SURVEY

640. A.
Rob. 174. 1027

643.0

518.0

19719.0

1900.8

1900.8

1900.8

1900.8

1900.8

1900.8

1900.8

VENUS

W.M. HILL

19. A.
620. A.

20908.8

21027.2

22051.8

1900

1900

1900

1900

RADFORD BERRY SURVEY

1715. A.

1783. A.

1715. A.

1783. A.

1715. A.

1783. A.

1715. A.

1783. A.

RADFORD BERRY SURVEY

28809.6

22849.2

22830.5

22869.7

22830.5

22869.7

22830.5

22869.7

3498. A.
Rob. 1. 957

3498. A.

3498. A.

3498. A.

3498. A.

3498. A.

3498. A.

3498. A.

3498. A.

LEEMAN

Sheet 3 of 5

Counted 12974

Ellis Co. Bdng. Line

Ellis-Johnson Line
Abstracted in Vol. 62

Feb. 21, 1940

4

Counter 52982

CHIPPON
 BBCLIND
 Scale 1. - 400000000
 Non Blurred
 Compared for General Fund and Other
 MA 2000000 for Ellis County
 T. P. B. for Johnson County
 As per record March 1939 of
 Five B. B. Ellis & Johnson County
 MADE OF