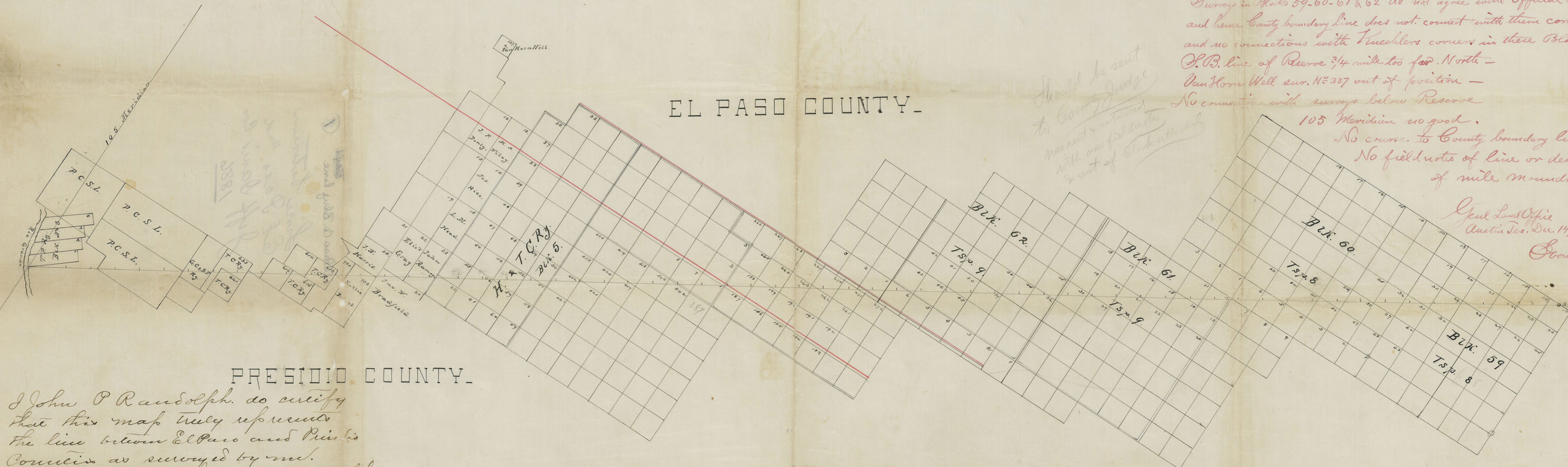


EL PASO COUNTY.

PRESIDIO COUNTY.



I John P Randolph do certify  
 that this map truly represents  
 the line between El Paso and Presidio  
 Counties as surveyed by me.  
 El Paso Oct 16, 1886. John P Randolph  
 Surveyor

Spring on North line of Sur. 13 and no connection with sur. 13.  
 Surveys in Blks 59-60-61 & 62 do not agree with official map  
 and hence County boundary line does not connect with them correctly  
 and no connections with Trueblers corners in these blocks.  
 S.P. line of Reserve 3/4 mile too far North -  
 Van Horn Well sur. N=337 out of position -  
 No connection with surveys below Reserve  
 105 Meridian no good.  
 No course to County boundary line.  
 No field notes of line or descriptions  
 of mile mounds

Should be sent  
 to County Judge  
 present returned  
 with any field notes  
 & cert of Clerk attached

Genl Land Office  
 Austin Tex. Dec. 14/86  
 Geo. Rosenberg  
 Deftman

H. C. ...  
 ...

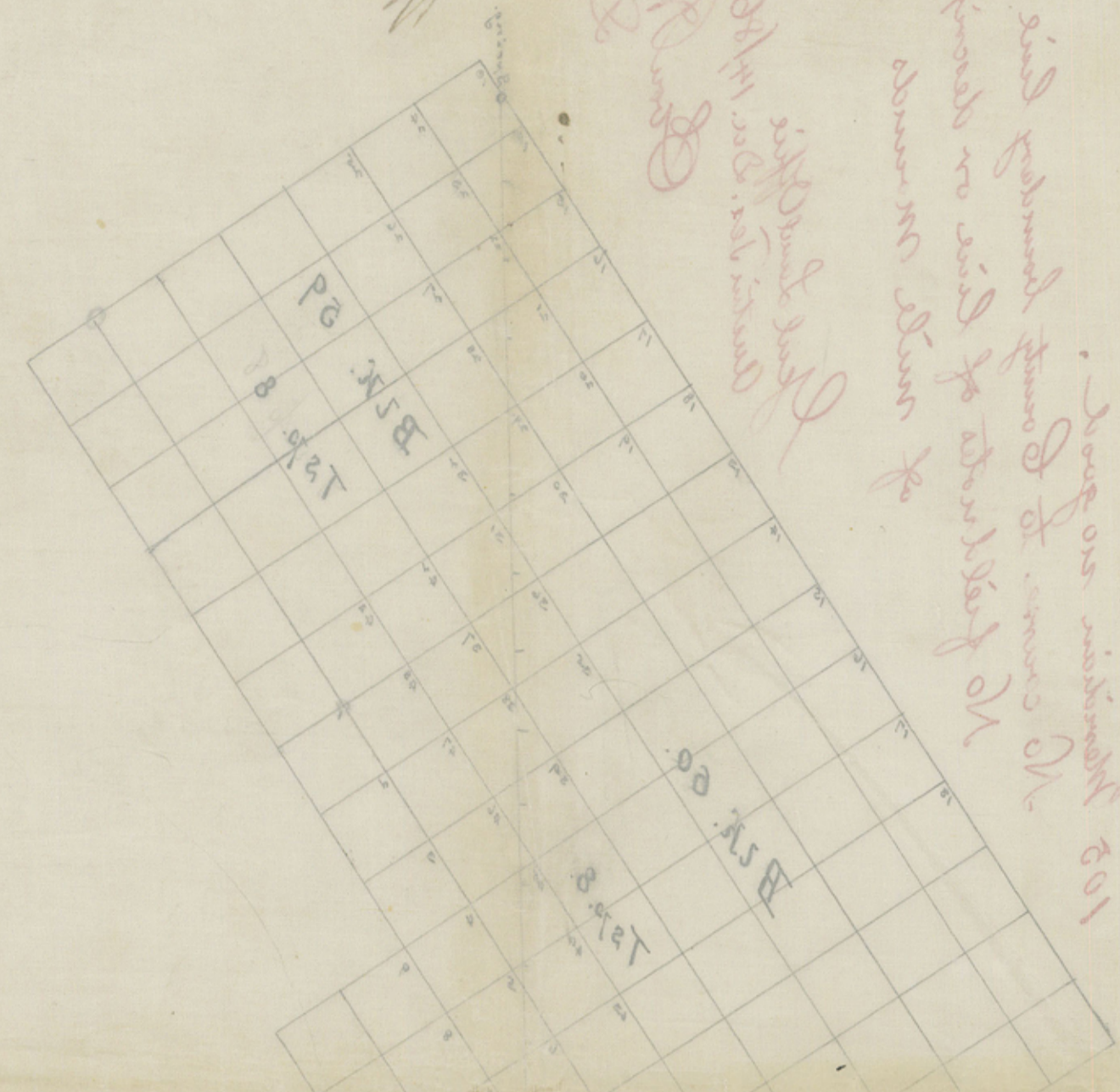
*Wm. J. ...*

*El Paso & ...*

*and ...*

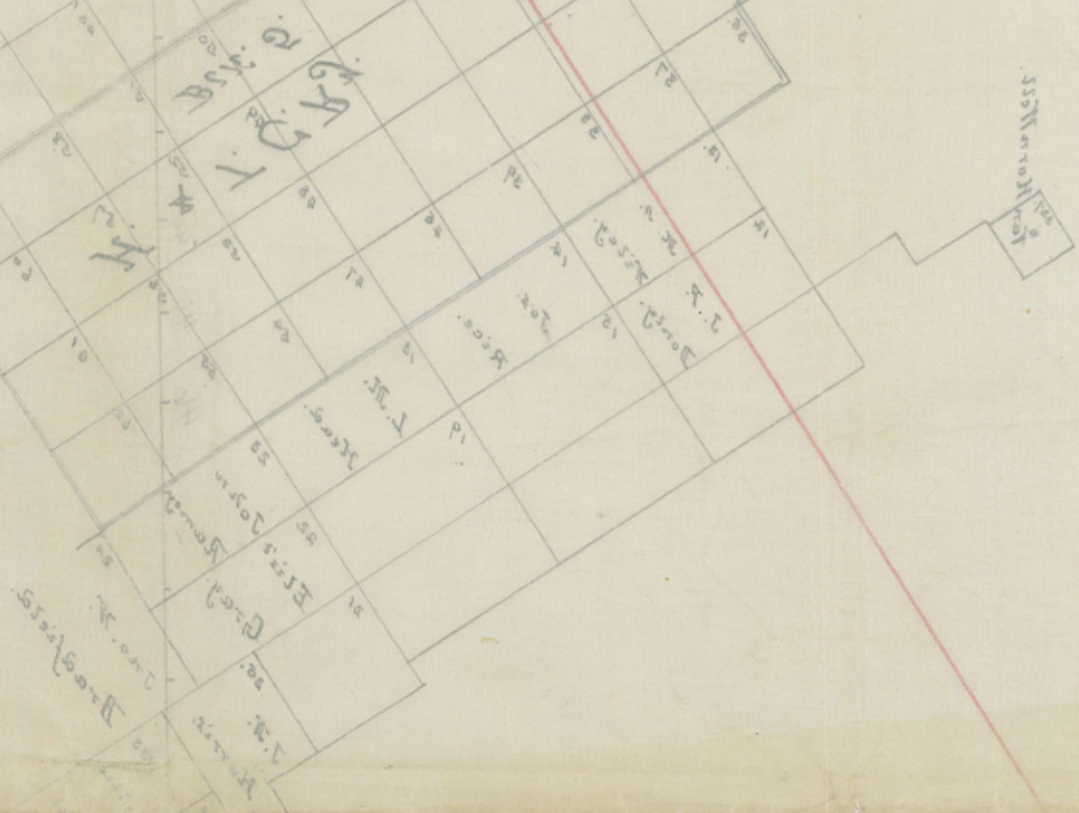
*... 601 ...*

*Es ...*



-Y T M U O O D E A Q J J

-Y T M U O O D I O T Z E P P



El Paso Co. Bdry line  
Line between  
El Paso and  
Jeff Davis Cos  
1886



*... 1886 ...*

Field Notes of a Survey of the Boundary line between El Paso  
and Presidio Counties

State of Texas

El Paso County } Field notes of a survey of the boundary  
line between El Paso & Presidio Counties made  
by virtue of an order of the Commissioners Court, of  
El Paso County Texas. Passed September  
1886. Beginning at a large monument made of  
lime & stone at San Martine Springs from which  
the N. W. corner of Section 13. Blk. 59. Tract. 8  
Texas & Pacific Ry. Lands. bears N. 81<sup>45</sup> W. 890  
var. Thence S. 58 W.

At 1 mile a mound of stone 2 feet high.

- " 2 " " " " " " " " " "
- " 3 " " " " " " " " " "
- " 4 " " " " " " " " " "
- " 5 " " " " " " " " " "
- " 6 " " " " " " " " " "
- " 7 " " " " " " " " " "
- " 8 " " " " " " " " " "
- " 9 " " " " " " " " " "
- " 10 " a stone set in the ground " " " "
- " 11 " " " " " " " " " "
- " 12 " " " " " " " " " "
- " 13 " mound of earth 3 feet high
- " 14 " " " " " " " " " "
- " 15 " " " " " " " " " "
- " 16 " " " " " " " " " "
- " 17 " " " " " " " " " "
- " 18 " " " " " " " " " "

El Paso Co. Entry Line 1

A

At 19 miles a mound of earth 3 feet high.

" 20 " " " " " " " "

" 21 " " " " " " " "

" 22 " " " " " " " "

" 23 " " " " " " " "

" 24 " " " " " " " "

" 25 " " " " " " " "

" 26 " " " " " " " "

" 27 " " " " " " " "

" 28 " " " " " " " "

" 29 " " " " " " " "

" 30 " " " " " " " "

" 31 " " " " " " " "

" 32 " " " " " " " "

At 33 miles a mound of earth 3 feet high.

" 34 " " " " " " " "

" 35 " " " " " " " "

" 36 " " " " " " " "

" 37 " " " " " " " "

" 38 " " " " " " " "

" 39 " " " " " " " "

" 40 " " " " " " " "

" 41 " " " " " " " " on the

W. Edge of Van Horn Flat.

At 42 miles a mound of earth 3 feet high

" 43 " " " " " " " "

" 44 " " " " " " " "

" 44 " 245 varas the center of the G. N. & S. A. Ry. tract from which Van Horn Stage

A'

stand bears N. 15776 vs <sup>1</sup>/<sub>2</sub> West 7705 vs. At 45  
miles, a rock md. 2 feet high.

At 46 miles, a rock mound 2 feet high.

" 46 " 445 vs. cross the East line of John  
Ramsey survey no. 20, 2171 vs. north of his N.E.  
corner

At 47 miles, a mound of earth 3 feet high.

" 48 " " " " " " " " " "  
" 49 " " " " rock 2 feet high on  
Van Horn mountains.

At 50 miles, a mound of rock 2 feet high

" 51 " " " " " " " " " "

" 52 " " " " " " " " " "

" 53 " " " " " " " " " "

" 54 " " " " " " " " " "

" 55 " " " " " " " " " "

" 56 " " " " " " " " " "

" 57 " " " " " " " " " "

" 58 " " " " " " " " " "

" 59 " " " " " " " " " "

" 60 " " " " Earth 3 feet high.

" 61 " " " " rock 2 feet high

" 62 " " " " " " " " " "

" 62 " 971 vs. monument of stone & lime on the  
bank of the Rio Grande, from which the Lower River  
corner of Survey No. 1, Block No. 3, made for Texas  
& Pacific Ry. bears N. 20 W. 110 vs.

Surveyed. Sept. 23<sup>rd</sup> to Oct. 15<sup>th</sup> 1886.

John Whitaker }  
Walter Muncey } C

A 2

I, John O. Randolph, Surveyor, Appointed by the Commissioners Court, of El Paso County, Texas, to establish the line between El Paso and Presidio Counties, do certify that said survey was made by me according to law, and that the above and foregoing are true field notes of the work actually done.

Witness my hand at El Paso this October 15th 1886.

John O. Randolph,

Special Surveyor.

Filed for record Nov. 19th. 1886, at 1 P.M.

Recorded Nov. 20th. 1886, at 10<sup>45</sup> A.M.

J. P. Clark, Clk.

By J. H. Phelps, Deputy.

1632 CERTIFICATE OF TRUE COPY

FOR SALE BY GEO. D. BARNARD & CO., PRS., ST. LOUIS.

Class 6

THE STATE OF TEXAS,

County of El Paso

J. P. Clark

Clerk of the County Court of El Paso County, Texas, do hereby certify that

the foregoing is a true and correct copy of the original Field Notes of a survey of the Boundary line between El Paso and Presidio Counties.

now on file in said Court, in Book 10 on page 165-166-167.

Given under my hand and the seal of said Court, at office in El Paso

this the 11th day of January A. D. 1887.

ATTEST:

J. H. Phelps Deputy.



El Paso Co.  
County line  
Book 1

Filed in County  
1-11-1887  
A<sup>3</sup>

count 53020