

In the matter of the contention between Jeff Davis County  
and El Paso & Reeves Counties as to their bounda-  
rily line

State of Texas

County of Travis

}  
}  
}

W. H. Streerwitz, of the  
city of Austin, Texas, being first duly sworn states  
that he has resided in Texas since 1877, and  
before that time, visited Texas about 1868 and 9.  
That he has been connected with the Geological  
Survey of Texas since 1888, and is now,  
and always with the Trans Pecos portion  
of the State. That he is well acquainted with  
the location of the Guadalupe mountains and  
the Apache mountains in Trans Pecos  
Texas. The Guadalupe mountains are for the  
most part <sup>in New Mexico</sup> and run in a S. E. direction into  
Texas about ten miles, and their slopes in ~~the~~ <sup>land</sup>  
towards the Pecos on the East, and on the West  
side it falls down into abrupt cliffs towards  
a broad valley, extending between the Sierra de  
Ablo and these cliffs. This valley extends to  
the Eagle mountains South, & North to the Salt  
Lake valley and into New Mexico,  
<sup>from an old Mexican in Fort Davis</sup>  
In 1878, that he learned that the moun-  
tains in the vicinity of Fort Davis were called  
Apache mountains as well as Lyrupia moun-  
tains or Davis mountains. The Apache mountains  
extend to some miles South of the T. P. Rail-  
road. There is no visible connection between  
the Guadalupe mountains and the Apache

mountains from any examination that I have had yet made. On Major Livermore's map the <sup>visible</sup> elevation of the Guadalupe mountains terminates about 7 or 8 miles, more or less north of T. P. R. R. opposite the Apache mountains. Major Livermore is military engineer of the U. S. A. & <sup>his map</sup> is on file at Head Quarters at San Antonio.

That he has seen in December 1888 a map of Jeff Davis County, compiled by the County Surveyor of Jeff Davis County and identifies the map handed to him as the one referred to, or a copy.

That he has always regarded the Springs near San Martine Station on the Texas Pacific Railway as the same as San Martin Spring in the Apache mountains. The Spring as located on said map of Jeff Davis county is correct. The map is hereto attached and marked "A"

W. W. Livermore  
Military Engineer  
and Mining Eng.

I have subscribed to before me  
Chas. Powell, County Clerk in and  
for Davis County Texas on this the  
6<sup>th</sup> day of May, A. D. 1891 at Austin  
Texas  
Signed in my hand  
and Seal of Office.

Chas. Powell  
County Clerk  
Davis Co  
Texas

L<sub>2</sub>

~~17~~  
El Paso Co Bdry line Box +

El Paso Co Bdry.

(17)



Before the Land Office

El Paso Co. Bdry.

Jeff Davis Co

vs.

El Paso + Reeves  
Counties -

Beaumont

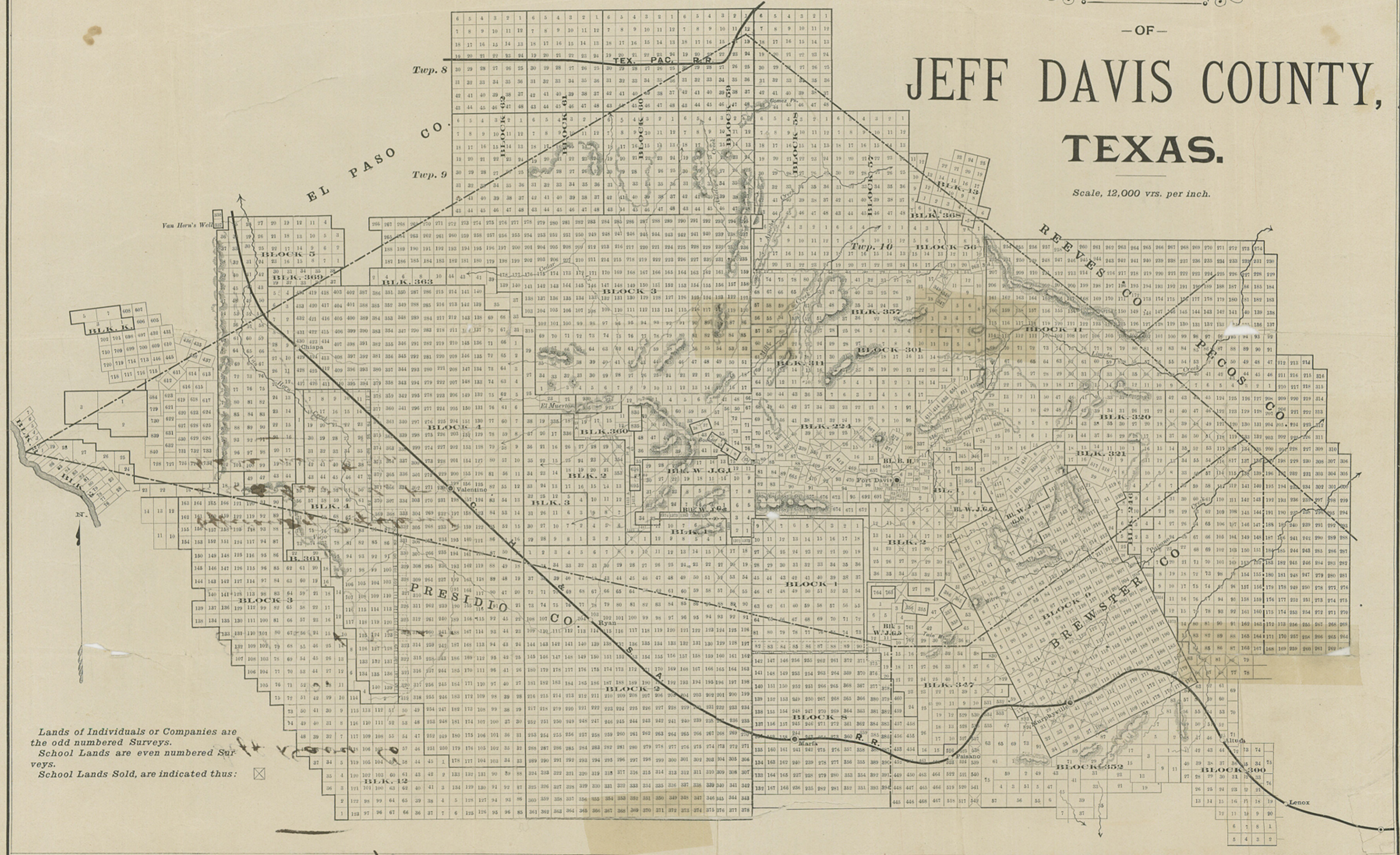
576/91

5-6-1891

Counter 53223

# JEFF DAVIS COUNTY, TEXAS.

Scale, 12,000 vrs. per inch.



Lands of Individuals or Companies are the odd numbered Surveys.  
 School Lands are even numbered Surveys.  
 School Lands Sold, are indicated thus:

*Handwritten note:* for the purpose of...

*Handwritten mark:* A

*Handwritten mark:* 11/18

El Paso Co Bdry 24  
El Paso Co Bdry, 10

A

In the Land Office

Jeff Davis Co

vs.

El Paso & Reaver  
Counties.

Affidavit of Prof Stearns  
in re to Guadalupe &  
Apache mountains.

County 53225

STEARNS

1880