

No 3

Falls Co Bdry Line 1

County b'dy between  
Falls  
and the Counties of  
McLennan &  
Bell,

---

Filed March 3<sup>rd</sup> / 87

---

Abstract Corrected  
May 20 / 89  
Beaumont

---

---

1

The State of Texas, } Commissioners Court  
County of Falls, } Falls Co. Texas.  
February Term 1888.

Ordered by the Court that R. S. Lunnicutte  
be and he is hereby appointed to resurvey  
and remark the Original West boundary  
line of Falls County being the line between  
Falls and Bell Counties as the same was  
run under act of the Legislature of Aug 30<sup>th</sup> 1856,  
that he begin said work on the 26<sup>th</sup> day of March  
1888. Surveyors to meet at or near the N. W. Corner  
of Falls County on said 26<sup>th</sup> day of March 1888.

The State of Texas }  
County of Falls } J. George T. Slater Clerk of  
the County Court in and for Falls County, do  
hereby Certify that the above and foregoing 2/3 pages  
contains a true and correct Copy of an order  
made and entered by the Commissioners Court  
of Falls County Texas, at its Feb'y term 1888, as  
same appears entered in the minutes of said  
court in Vol 2 page 40. Given under my  
hand and Seal of Office this 24<sup>th</sup> day of March A.D.  
1888.

County Court  
Seal

Jos. G. Slater C.C.C. & C.  
By W. J. Ficks Dep't

The State of Texas } To the Hon Commissioners Court  
County of Falls, } of Falls County Texas. The under-  
signed, Robt. S. Lunnicutte County Surveyor of  
Falls County in obedience to the Order of the Com-  
missioners Court of Falls County, A true Copy of  
which is hereto attached, Met Mr Ed. J. Ruckler  
County Surveyor of Bell County for the purpose  
of resurveying and remarking the Original  
West boundary line of Falls County, being the

line between Falls and Bell Counties, as the same was<sup>2</sup>  
run under act of the Legislature of Aug 30<sup>th</sup> 1856  
After some preliminary Conversation with Mr Rucker  
I learned that his views of our duties was  
that we should unite in running and marking  
a new line dividing our Counties. This he  
proposed to do by adapting a point, said by  
him to have been vicinity established for the S. W  
Cor of McLennan County, and from this point  
measure six miles N 60 E and there establish the  
N. W Cor of Falls County and from this point run  
the dividing S 30 E to the North line of Milam  
County. This making an Original Survey, based  
upon a recent change in the location of the S. W  
Cor of McLennan County. In this view I could  
not concur. 1<sup>st</sup> Because I was aware that  
a line known by general repute as the line  
between Bell and Falls Counties existed about  
one mile and one half to the West of the point  
as indicated by Mr. Rucker, which line I am  
informed has long been recognized as the line  
run under authority of the Act of August 30<sup>th</sup>  
1856. and is so delineated on the maps of Bell  
and Falls Counties. 2<sup>nd</sup> Because the line divi-  
ding Bell and Falls Counties having been fixed  
under the act of Aug 30<sup>th</sup> 1856, no subsequent change  
of the location of the S. W Cor of McLennan County  
could have effect of changing the established and  
long recognized boundary of Falls County. To  
resurvey and remark this line was my duty as  
I understand your order to me and so believing  
I proceeded to run and mark said line as  
follows, to wit, Beginning at a point in the South  
line of McLennan County, which point is N 30 W  
790 25 and S 60 N 296 25 from the N. W Cor of

the Sam Farney Survey and N60E 55 vs from  
the bed of a branch, At this point I set a post  
and marked it as a cor. Thence S30E at  
875 vs bed of branch at 1250 vs in the East  
side of the run of Deer Creek and out on  
same side (East) at 1765 vs bed of a branch  
10 vs East of its mouth in Deer Creek at  
m vs cross on<sup>to</sup> the West side of Deer Creek  
and at one mile in a brushy bend on the  
West side of creek m 1 mile m at 60  
vs cross bed of Deer Creek, at 160 vs the. Mo  
Pacific R.R. 457 vs N27 1/2 E from where said  
road crosses Deer Creek at 732 vs bed of  
branch 1147 vs East bank of Deer Creek and  
down Creek at 1257 vs the mouth of branch  
is N60E 8 vs, at 1300 vs leave the East  
bank of the Creek at 1729 vs cross the line  
between the two S.L. locs. Survey. 190 vs S62 N  
from the cor of same in West line Sam. Farney  
Survey at 1756 vs bed of branch and at two  
miles set a cedar post, from which a hackberry  
tree 20 in in dia vs N5.E. 4 1/2 vs. and a  
Pecan tree 20 in in dia standing in the East bank  
of Deer Creek vs S83 1/2 N 52 1/2 vs m 2 miles  
at 160 vs enter East bank of Deer Creek and  
cross to the West bank, at 220 vs two large  
Pecan trees standing in the West bank of Deer  
Creek with old line marked on the East side  
at 280 vs back on the East bank of Deer Creek  
at 374 vs bed of branch opposite the mouth of  
another branch coming in on the West side  
of Deer Creek at 460 vs in the bed of Deer  
Creek and down same at 800 on the West  
bank of creek opposite mouth of a branch  
coming in on the East side. at about 1000 vs.

(4)

3 mi

Cross back to the East bank at 1100 rs. West  
bank again, and at 1200 rs leaves East bank  
again at 1221 rs Cross the South line of J. L. Coles  
and North line of L. Billings, 135 rs S. W. from  
the N. W. Cor of the James Dunn Survey, and  
the S. W. Cor of the Sam Farney, at 1879 rs bed  
of branch and at three miles set a post  
3 Miles, at 672 rs line between Billings and  
Moore Surveys and at 4 Miles set a post near  
East line of John J. Moore Survey in 4 Miles  
at 1664 rs Cross the North line of the J. J. Long  
Survey, and the South line of the E. Tatow Ford  
N. 67° E from the S. W. Cor of the Tatow, and at 5  
Miles set a post, in 5 Miles in at 240 rs  
enter East bank of Deer Creek and down the  
Creek getting on the West bank at 425 rs. get  
back to the East bank of Deer Creek at 1060 rs  
enter East bank and cross the Creek and leave  
the S. W. bank at 1080 rs, and at six miles  
140 rs set a post in a fence on the South line  
of the J. J. Long Survey in 6 Miles in at 1398  
rs in center of a lane on the South line of  
the S. Hoffmann Survey, and at seven miles  
set a post, in 7 Miles in at 170 rs head  
of Pond Creek 20 rs to the West at 517 rs East  
bank of Pond Creek and at 600 rs the West  
bank of Pond Creek at 612 rs bed of small short  
branch, at 1585 rs bed of large branch and at  
Eight miles 133 rs set a post in the North  
line of the Wm. Kibbe Survey in 8 Miles in  
at 680 rs Cross a branch at 1160 rs to the  
Marlin and Belton Road and at nine miles  
no post (in field) in 9 Miles in at 690 rs  
bed of one prong of Pond Creek and across  
an island made by a split in said Creek

At 836 vrs enter Creek on South side of Island and  
 leave it at 900 vrs, at 1200 vrs Cross the South line  
 of Mrs Kibbe Surrey 67 vrs from the SW Cor of the same  
 at 1730 vrs bed of branch, and at ten Miles set a  
 post in 10 Miles at 42 vrs bed of small branch  
 at 1105 vrs bed of branch, Course about N 70 W  
 at 1870 vrs Cross an old road, the Course of which  
 is S 62 1/2 E, at 1885 vrs head of branch, and at  
 11 Miles set a post from which a Pecan tree 16 in  
 in dia bns S 67 E 49 1/5 vrs, and another 17 in in dia  
 bns S 70 E 53 vrs in 11 Miles in at 510 vrs the mouth  
 of a branch that heads at the 11 Mile post in  
 the bed of a large branch that heads near the  
 old Jackson place on the G. W Harbour Surrey  
 at 600 vrs Cross said branch where there is a  
 large Elm tree marked with three old hacks on  
 the West side, at 1030 vrs bed of branch, at 1115 vrs  
 the S. W Cor of G. W Harbour Surrey is N 60 E, 317 vrs  
 at 1175 vrs a kipple elm with a bastard China tree  
 standing by it, at 1583 vrs bed of branch  
 and at 12 Miles set a post in 12 Miles  
 at 500 vrs bed of branch at 1505 vrs Cross  
 the N E line of M Hunt Surrey, Course S  
 71 E, and at 13 Miles set a post about  
 120 vrs West of the West prong of North  
 Elm in 13 Miles, at 180 vrs bed of branch at 460 vrs  
 Cross an old road, Course S 19 W, 625 vrs S E line Hunt  
 Course S 19 W at 1290 vrs branch, at 1390 vrs South line  
 David Barlow Surrey, and at 14 Miles  
 set a post. ~~~~~ 14 Miles ~~~~~  
 at 135 vrs small branch, at 325 vrs  
 another branch, at 1606 vrs line between  
 Hunt Surreys, and 15 Miles no post (in field)  
 15 Miles - at 250 vrs enter branch and  
 leave it at 325 vrs, at 760 vrs bed of branch, at

1615 rns line between two Hunt Surreys, 200 360 N<sup>6</sup>  
 ↓ from West bank of North Elm, and 500 rns N60. E  
 from the Cors of said Surreys, at 1880 rns bed  
 of branch, and at 16 Miles set a post  
 in 16 Miles, at 60 rns bed of North elm, and Cross  
 on to the East side, at 260 rns on the East bank  
 at 408 rns bed of branch, at 1420 rns Elm tree  
 about 20 rns on right marked with three old  
 hucks on the S.E. side, at 1450 rns bed of small  
 branch, at 1735 rns Cross the North line of the  
 ↓ H. W. Hilcox Surrey, N60 E 750 rns from the N.W  
 Cor of the same and 80 rns from East bank  
 of North Elm, at 1800 rns bed of branch, and  
 at 17 Miles. Set a post in 17 Miles at 380 rns  
 bed of branch, and at 400 rns East bank of  
 18 Creek 10 rns to my right, and at 18 Miles 17 rns  
 ↓ Set a post in line of fence between Hilcox & Miles  
 Surreys 751 rns from the S.W Cor of the Hilcox in  
 18 Miles, at 1400 rns bed of branch, and at  
 19 Miles set a post in 19 Miles at 1800 rns pass  
 through an elm grove, and at 20 Miles no post  
 in 20 Miles, at 700 rns South line of James Smith  
 Surrey in rns from S.W Cor of same, on 287 rns  
 N60 E from N.W Cor of the Lewis Helzley Surrey  
 and at 21 Miles set a post in 21 Miles in  
 at 400 rns, 450 rns + 510 rns Cross & recross Wilson  
 branch at 1100 rns bed of Wilson branch, about  
 20 rns on my right at a bend, at 1350 rns bed  
 of branch, and at 1885 rns set a post in line  
 between the Lewis Helzley & John Hobson Surreys  
 287 rns from S.W Cor of Helzley + 140 360 N from  
 the N.E Cor of the Hobson, at 860 rns bed of  
 branch about 10 rns N60 E from bed of Wilson  
 branch, at 900 rns Wilson branch and Cross  
 & recross leaving East bank at 1050 rns at 1790

1  
was a forked Elm tree marked fore and aft  
at 23 miles no post - 23 miles - at Twenty-  
three miles 1184 was set a post for the S. W. Cor  
of Falls County, on the North line of Milam  
County, from which an Elm marked E was S 70 W  
1/3 was + a musquie-marked C was S 69 1/4 W 69  
was and a Double Post Oak marked E was N  
59 1/2 E 56 3/5 was

May 1888.

Respectfully Submitted

Rabt. S. Hunsmeatt

County Surveyor Falls County Texas

Filed May 15<sup>th</sup> 1888 Geo. G. Stallen C.C.F.C. by W. F. Fruits Dep't  
Recorded July 6<sup>th</sup> 1889. Jno. W. Jolly C.C.F.C.



Be it remembered that on this the 12<sup>th</sup> day of  
November a D 1888 there was begun & haden  
a regular Term of the Commissioners County of  
Falls County Texas at the Court House thereof  
in the City of Marlin.

Present & Presiding Hon John N Wharton County Judge  
J. F. Wilsford, Com<sup>r</sup> Pr No 1  
R. J. Garrett " " " 2  
J. F. Daniels " " " 3  
J. N. Davis " " " 4  
Geo. G. Staten Clerk  
Cyrus Whitaker Sheriff

When the following proceedings were had and  
entered of record to wit

Ordered by the Court that the report of  
County Surveyor Ralt. S. Hunsnicutt of the  
Survey of the boundary line between Falls and  
McLennan Counties together with the return  
of the field notes and map accompanying the  
same are hereby received, approved & adopted  
by this Court, and the County Clerk is ordered  
to record said field notes and map & forthwith  
send Certified Copy thereof to General Land  
Office of the State of Texas.

foregoing minutes read and approved in Open  
Court & Court adjourned to meet Nov 26<sup>th</sup> 1888

John N. Wharton  
Co Judge

Attest Geo. G. Staten Clerk  
By W. J. Fuick Depy

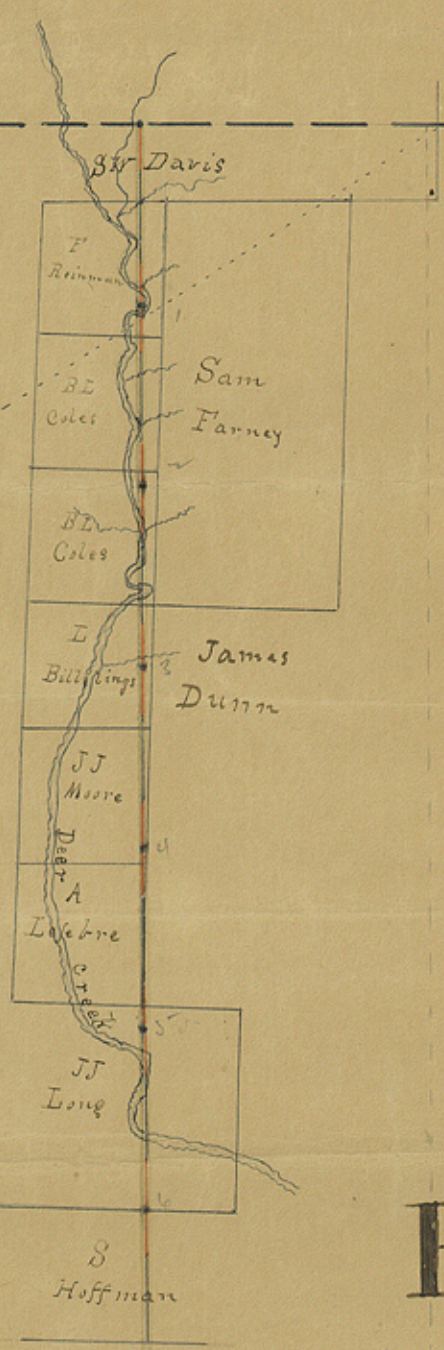
The State of Texas, I, John W. Jolly Clerk of the  
County of Falls, County Court of Falls County Tex  
do hereby Certify that the foregoing 97<sup>th</sup> Serial and one  
half pages contain a true and correct copy of an  
order of the Hon Commissioners Court of Falls County  
Texas, appointing Robt. S. Sturricutt County Surveyor  
of said County to resurvey and remark the original  
West boundary line between Falls and Bell Counties,  
and the report of his action thereunder, with map attached  
as the same appears of Record in Book 7, Falls County  
Deed Records on pages 576-580 + 638 + 639. Also a true copy  
of the the said Commissioners approving said report &c  
as the same appears in the minutes of said Court  
in Journal No 2 on page 60

Given under my hand and Seal of  
Office at Marlin Texas, this July 27<sup>th</sup> AD 1889

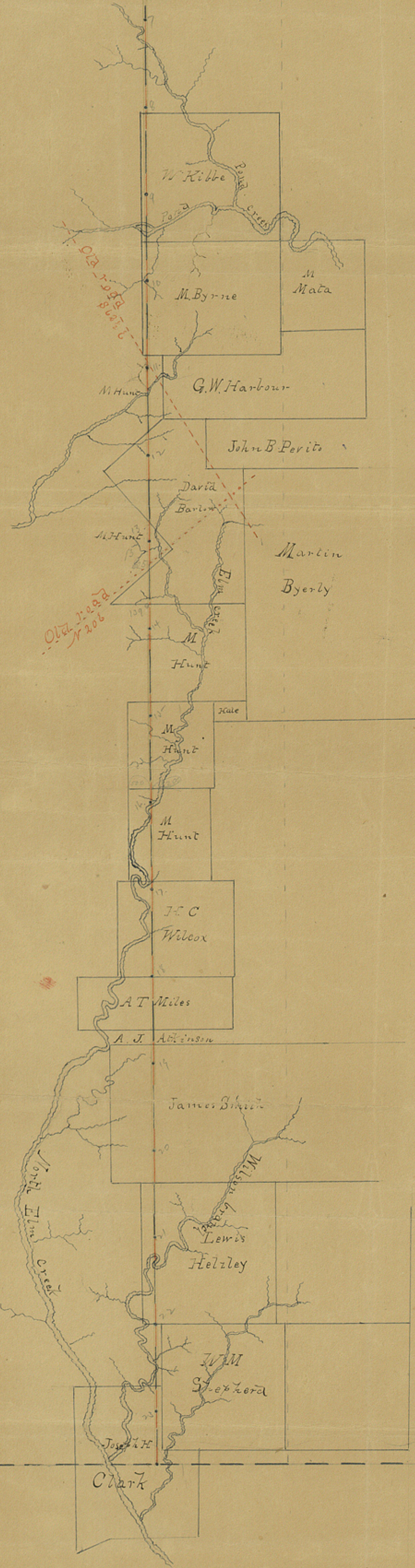
Jno W Jolly  
Clerk. County Court Falls Co Tex.



Mc Lennan County



FALLS COUNTY



Bell County

Milam County

#  
County line between  
Falls  
+  
Bell Co.

OK  
Filed March 20<sup>th</sup> 1889

abstract comited  
May 2<sup>nd</sup> 1889  
Beaumont

Counter 53252