

To the Hon Commissioners Court
of Fannin County Texas }

Whereas at the Nov Term A D 1884 of
the Commissioners Court of Lamar County Texas
Thos H Skidmore Surveyor for said County
was appointed by said Court to resurvey the
Boundary line between Lamar and Fannin
Counties and upon Notice thereof the Hon Commis-
sioners Court of Fannin County on the 2nd day of Jan
1885 appointed W Keithly Surveyor for said Fannin
County to assist in said resurvey. the time designated
by said Court being the 16th day of February A D 1885

We the undersigned Surveyors named in said or-
der. would most respectfully report that in obedience
to said order met on the 16th day of February 1885 and
having ascertained the Variation of the needle
at which the original line was run to wit: $8^{\circ}23' E$
and having ascertained the point at which the
original line between Nacogdoches and Fannin
Land Districts. Started from the center of Bois d'arc
and Bayou at the Carter Clift crossing.

We began said Survey of which the following
pages contain true & correct field notes at the
center of Bois d'arc Bayou at Rock Ford or Carter
Clifts Crossing of said Bayou.

Whence the beginning
Corner Post on the nearest accessible point marked
L.F. CL on its South face and on its West face

marked "CL 30^v" was set from Beginning S 42°
E 27 Varas and a Post Oak tree on the bank of Bayou
mkd $\frac{FL}{L}$ bears S 41° E 28 Varas.

We surveyed thence South
with James Garlands west line and J L Dillingham's
East line marking the line with four hooks on face
of trees next the line. at 1423 Varas crossed a branch
3 Varas wide. course NW. at 1900 Varas a Post oak
on old line mkd 1 M set a mile post marked on
South face. CL 1 M on east face L and on the west
face F said post of Bois d arc 8 inches square is 5 feet
long & 3 feet in the ground

Second Mile

Continued South with the lines of said Surveys at 90
Varas a branch course west 1 Varas wide at 420 Varas a
large branch course NW 4 Varas wide at 689 Varas
looked closely for SE corner of said J L Dillingham
and the NE corner of W Davis survey but failed
to find it - at 860 Varas a branch general course NW
2 Vrs wide. continuing up said branch 100 Varas.
at 881 Varas again looked for Davis & Dillingham's
corner but failed to find it - at 1900 Varas a Red Oak
on old line - marked 11 M Set 2nd mile Post mkd
2 M

Third Mile

Continued South at two miles & 1340 Vrs or 5140 Vrs
passed Garlands SE corner it being of W Mcbaenest W
corner at 1900 Varas a Red Oak - 3 mile tree on old

line Set 3rd Mile Post marked 3 M

Fourth Mile

Continued South with Mcbane west line and Davis and Beasley's East line - at 540 Vrs a branch 2 Vrs wide course N E - at 1900 Vrs set 4th mile post - marked 4 M

Fifth Mile

Continued South with Mcbane & Milleams and E P Stevens West lines and Beasley & Parkers East lines. 1850 Vrs said Stephens SW corner & of Morgan NW corner - at 1900 Vrs set 5th Mile Post marked 5 M

Sixth Mile

Continued South at 350 Vrs Blough Creek course N E (7 Vrs wide) - at 450 Vrs SW corner of J Morgan and the NW corner of H J Clark Surveys - at 854 Vrs said Clark SW corner Reed NW corner - at 932 Vrs Hawley SE corner & of Bothams NE corner - in all South 1900 Vrs set the 6th Mile Post marked 6 M

Seventh Mile

Continued South - at 410 Vrs the SW corner of Reed and the SE corner of J J Bothams Survey in Road leading from Tigertown to Blue Prairie - the North line of J Davis Survey crossing said Davis line 1404 Vrs West of his NE corner and 496 Vrs East of his NW corner - 885 Vrs a branch course East - Vrs wide - at 1100 Vrs branch 2 Vrs wide course SE at 1470 Vrs North Prong of Sawdust Creek 4 Vrs wide course N E - at 1900 Vrs set the 7th Mile

Post in edge of prairie marked 7. M.

Eighth Mile

Continued South - at 600 vrs through prairie to timber
at 630 vrs Davis South line (an excess of 22000) and W
L Boyds North line - 496 East of his NW corner - at 995
varas Saunders Creek 5 varas wide course NE. at 1580
varas Boyds South line 454 varas west of his SE
corner - a Boisd arc State the NW corner of sec No 68 in
Lancaster County & the NE corner of section No 5 in
Pawnee County stands 3 varas west of our line - at
1900 varas set the 8th Mile Post mkd 8. M. 3 varas
west of this mile Post is the SW corner of Sec No 68 & the
NW corner of No 67 Lancaster Co School Lands

Ninth Mile

Continued South 1900 varas set the Ninth Mile Post
mkd 9 M

Tenth Mile

Continued South 1900 vrs set tenth Mile Post
mkd 10 M

Eleventh Mile

Continued South through prairie at 1900 varas
set Post mkd 11 M

Twelfth Mile

Continued South 897 varas to a point 4 varas East of
the SE of Sec No 2 & the NE corner of Sec No 1 Pawnee
County school Land at 1180 varas a branch 2 vrs wide
course east - at 1900 varas set 12 Mile Post near SE
of McClures residence said Post mkd 12 M

Thirteenth Mile

Continued South at 340 Varas outer edge of brush. at 476 Varas a point 37 vrs East of R W Maxwell's N E corner at 520 a prong of Saunders Creek - up a branch crossing same several times - through brush leaving branch on East and entering prairie at 720 Varas - at 1366 vrs passed the N W corner of Lamar County school Land at 1900 Varas 13 Mile Post Marked 13 M

Fourteenth Mile

Continued South at 110 Varas passed 42 Varas west of R W Maxwell's S E corner - at 198 Varas passed 15 Varas East of A J Mosier's East Chimney - at 1190 Varas Mary Johnson's North line - 2663 vrs East of her N W corner & 33 vrs East of J J Cravens' S E corner at 1900 vrs set 14th Mile Post Mkd 14 M

Fifteenth Mile

Continued South at 432 Varas a Paris & Honey Grove Road - at 1380 vrs a ravine at 1560 Varas same ravine at 1900 vrs set 15 Mile Post Mkd 15 M

Sixteenth Mile

Continued South - at 1000 vrs to Paris and Honey Grove Road - at 1520 vrs a branch 120 Varas wide corner S E at 1580 Varas the South line of Mary Johnson's Survey at 1900 Varas set 16th Mile Post Mkd 16 M

Seventeenth Mile

Continued South - at 45 vrs Mercers Brinkley's North line at 160 Varas to Center of D & P Rail Road - at 620 vrs branch - at 1900 Varas Post at edge of

Crush I & V near Mr Guggard's residence Post mkd
17 M

Eighteenth Mile

Continued South at 45 vrs Mr Brinkley's south
line (428 vrs East of his S W corner) and the North
line of W B Cox Survey - at 630 varas passed 6 varas
East of Mc Kille well - at 1900 vrs set Eighteenth
mile Post in J B Yarbrough's field Post mkd
18 M

Nineteenth Mile

Continued South at 1160 vrs South line of said Cox
Survey (302 varas East of his S W corner) and John
Bulls north line 192 varas west of his N E corner
- at 150 vrs outer brush 1900 varas 19 mile Post
mkd 19 M

Twentieth Mile

Continued South at 390 vrs cross Bew Franklin
and Horney Grove Road at 1900 varas set 20th
mile Post in a field Post marked 20 M

Twenty first Mile

Continued South at 1300 vrs brush & timber at 1655
Solletts creek 15 varas wide Course S E at 1900 varas
set 21st mile Post mkd 21 M

Twenty Second Mile

Continued South at 175 varas John Bulls South
line (156 varas west of his S E corner) and E Earley's
north line 480¹/₂ varas East of his S W corner - at
740 vrs National Road 1521 varas said Earley's

South line and Abhisunno North line 862 Varas
West of his (Chisunno) E'N'E' Corner - 1900 Varas 22
Mile Post Marked 22 M

Twenty Third Mile

Continued South - at 140 Varas Chisunno South
line and M E Morrell north line 1162 Varas west
of his NE corner and 266 Varas East of his NW corner
at 630 Varas Branch 2 Vrs wide course S E at 1900
Varas 23rd Mile Post marked 23 M which stands
S 74° E 124 Varas from Walcotts East Chimney

Twenty fourth Mile

Continued South at 28 Varas M E Morrells south line
266 Varas East of his SW corner and 1967 Varas West
of his S E corner and the north line of Francis Hollands
Survey 122 Varas East of his NW corner continuing
South crossing Hollands West line and Isaac Lyday
East line at 740 Varas. at 900 Varas Timber. 1005 Varas
to branch at 1120 Vrs Branch. course nearly south in all
South 1900 Vrs to the 24th Mile Post marked 24 M

Twenty fifth Mile

Continued South 1825 Varas to the center of North Sul
phur Creek. set a Post on the North bank of said creek
15 Varas North of the center of said Stream. Post marked
on NE face ^{S.W.C} L.C. and on S E face ^{N.W.C} D.C. an claw marked
X bears west $\frac{1}{2}$ Varas.

We found that the NE corner of sec-
tion No 4 in Paimin County is set East of the County

line 66 Varas, while the N E corner of section No 5 and the NW corner of Sec 68 in Lamar County is 30 Varas west of County line, that Sections Nos 1, 2, 3 & 4 were run at a lower variation than the County line. The East line of Sec No 2 crosses County line as shown by the red line on map and that the SE corner of No 1 is 37 Varas west of the County line at Maxwell's N E corner Maxwell's entire East line being 37 Varas west of the County line and we think that when the Survey (secs 1, 2, 3, 4 & 5 in Fannin County and 65, 66, & 67 in Lamar County) were originally made that they run with the County line as the original corners of Secs Nos 68 the NW corner of 67 & the N E corner of Sec No 5 are still standing 3 Varas west of the County line as run by us and as we are satisfied it was originally run.

We found that Bois d arc Bayou has found a new channel from a short distance below the NW corner of the James Garland survey and the SW corner of Squire Moays Survey on said Bayou to Red River emptying into said river about one and a half miles above and west of the old mouth of said Creek though the old channel or bed from Rock Ford or Chelifts Crossing is perfect - running with the east lines of the N B Bush and J Leonard Surveys and the west lines of the James Garland's S Moays & Mendith Harts Surveys emptying into Red River at the N E corner of J Leonard's the NW corner of the W Hart Survey

We conclude from the best information to be obtained that at this point the South bank of the River has washed in and fallen into the river for a distance of about 100 yards. Consequently the old bearings of the West and Leonard Survey and the old bearing of corner between Lamar & Pannin Counties are gone.

We settled upon the old bed of Bois d'arc creek as the true original boundary between the said counties and point on Red River at which the old channel of said Bayou empties into it as the true and correct corner between Lamar and Pannin Counties which point we find to be 5374 Varas $N 45^{\circ} E$ from the Rock Ford or Carter bluffs crossing on Bois d'arc creek. There being no ground near upon which a post would be likely to stand for any length of time owing to the falling in of banks of River we marked a Cottonwood Tree C.L. bearing from the present center of mouth of Bois d'arc Creek $S 1^{\circ} E$ 90 varas. The line South from Rock Ford is marked at every mile by a substantial Bois d'arc post 5 feet long & 8 inches square, set in the ground (3) three feet deep. And beside the mark of the number of end of mile at which each post is set marked on south face of Post, is also marked on the South face C.L. and on East face L. - on the West face F. said letters & figures being neatly and artistically cut in the wood to the depth of about one third of an inch. In running the above

line from Bois d'arc through to Saunders Creek
where the old line had been marked we ran
exactly upon the old line. We also, between the 16th &
17 mile Posts, were on the old line in the narrow
Strip of timber through which we passed again in
timber on Pollett's Creek and again in timber on
Lydays Survey on the last two miles of the line.

The Survey was begun on the 17th day of February &
finished on the 14th day of April A D 1885

J W Patterson M B Keithly and Latrobe Carroll Chain
Carriers.

James W Mc Rady Marker and B Mc Patterson
Flagman M Keithly
Thos W Skidmore

The State of Texas

We M B Keithly Surveyor for Fannin
County and Thos W Skidmore Surveyor for Lamar
County do hereby Certify the above and foregoing pages are
true & correct field notes of the line between Lamar & Fannin
Counties as the same was run by us. That the line was
carefully & correctly run all objects of note on or near the
line are noted and described in said field notes, and
the diagram accompanying the same is a correct map
of the same & of Surveys on each side of the line.

Witness our hands this 23rd day of April 1885

M B Keithly Sur F Co Tex
J W Skidmore Sur L Co Tex

The State of Texas
County of Tarrant } J. J. P. Noble Clerk of
the County Court of Tarrant County Texas
do hereby certify that the above and foregoing
is true Copy of the Report of the Survey and Map
of same made by Mr Keithly Surveyor of Tarrant
County and J H Shidmore Surveyor of Tarrant
County the original of which together with the Map
thereof is on file in this office and recorded on
Pages, 17, 18, 19, 20 & 21 Vol 21, Tarrant County
Records Deeds Bonds &c

Given under my hand and seal
of office this 18th day of June 1885

Clerk County Court
Tarrant County Texas

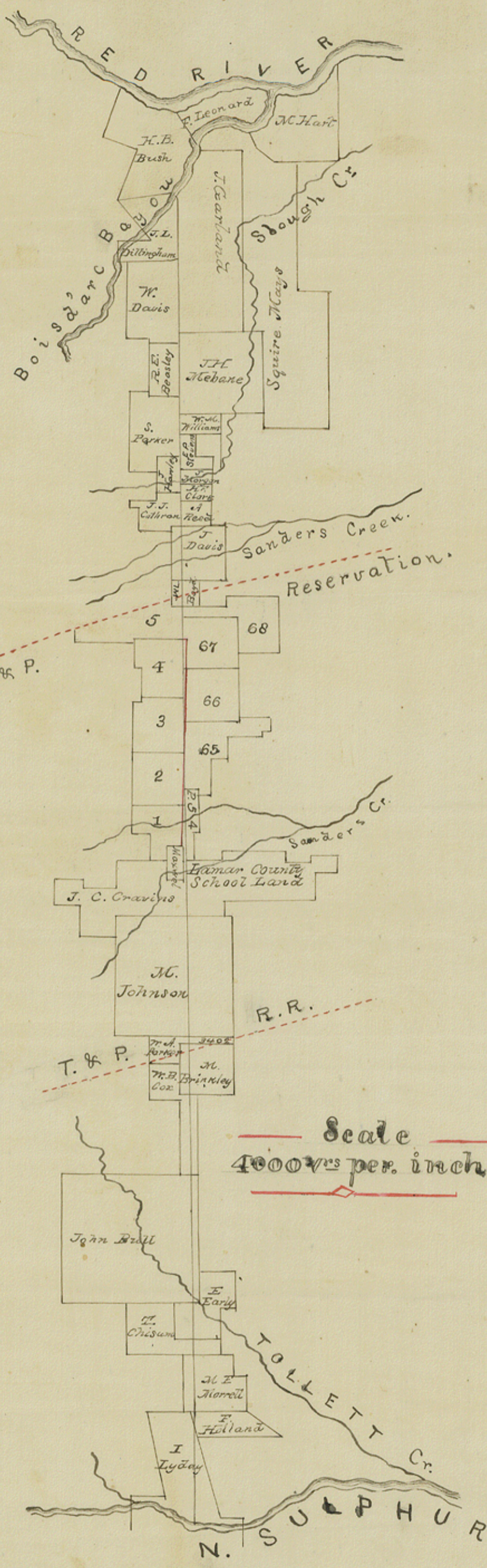
2/ Fannie & Lamar
Co Line

Received in Genl Sd Office
August 31st 1885

D. H. Robinson
Chf Clerk

See page 44 - Record of cor-
-rected abstract which
shows copy of Correction
forward Compt made
from similar report
as the within Aug.
25th 1885

Beaumont



M.E.P. & P.

Reservation.

Scale
4000^{ths} per. inch

MAP

Fannin & Lamar
County Line.