

To The Hon Commissioners Court  
of Fannin County Texas }

Whereas at the  
New Term A D 1885 the said Commis Court of said  
Fannin County Texas appointed M Keithly Surveyor  
for Fannin County to resurvey the boundary line between  
Fannin and Hunt Counties, and upon Notice thereof the  
Hon Commis Court of Hunt County on the 9<sup>th</sup> day  
of June A D 1885 appointed W G Kinney Surveyor  
for Hunt County to represent said County in said resurvey  
of boundary line between the Counties of Fannin & Hunt  
The time designated being the 23<sup>rd</sup> day of June  
A D 1885

We the undersigned Surveyors named in said  
orders most respectfully report that we met on the 23<sup>rd</sup>  
day of June A D 1885 and after trying in vain to  
ascertain the Variation of the old line (which we found  
to be a crooked line) we ran a trial line from the S E  
Cor of Fannin County same being the N E Cor of Hunt  
County to intersect the North boundary line of Delta County  
and the South boundary line of Fannin County as estab-  
lished by Keithly and Wilson Sep 25-26-27 & 28 A D  
1882

The Beginning or S E Corner of Fannin County as  
well as the N E Cor of Hunt County is a large Bois'd  
and Post marked on the North side S E F C and N E  
H C on South side and x 85 on East side, said Post  
is on N B line of Delta County 56 <sup>1</sup>/<sub>10</sub> W of the N E  
Cor of the Samuel Corley 320 A Sur from which

an Elm marked F bears N  $46^{\circ}$  W  $7\frac{1}{10}$  Vrs a large  
Elm marked H bears S  $36^{\circ}$  W 9 Vrs

1<sup>st</sup> Mile

Thence S  $80^{\circ}$  W (variation  $7^{\circ}$  44' East) at 1242  
Vrs passed S of sd Corleys NW cor. 297  $\frac{1}{10}$  Varas and  
550 Vrs S of the NE cor of John Pizer Survey. at  
1900  $\frac{1}{10}$  Vrs set 1<sup>st</sup> mile Post from which an Elm marked  
F bears S  $25^{\circ}$  W  $2\frac{1}{2}$  Vrs, an Elm marked H bears S  
 $77\frac{1}{2}^{\circ}$  E  $3\frac{1}{2}$  Vrs

2<sup>nd</sup> Mile

Continued S  $80^{\circ}$  W, at 648 Vrs to Farmigan Creek at 1100  
Vrs Pizer W B line 840 Vrs S of his NW corner 892  
Vrs S of the NE cor of J B Johnson Survey at 1900  $\frac{1}{10}$   
Vrs set 2<sup>nd</sup> mile Post from which an Elm marked  
F bears N  $4\frac{1}{10}$  Vrs, an Elm marked H bears S  $51^{\circ}$  E  
10 Vrs

3<sup>rd</sup> Mile

Continued S  $80^{\circ}$  W, at 1590 Varas Creek course South  
at 1900  $\frac{1}{10}$  Vrs set 3<sup>rd</sup> mile Post from which an Elm  
marked F bears N  $74^{\circ}$  W  $4\frac{1}{2}$  Vrs an Elm marked H  
bears S - E 7 Vrs

4<sup>th</sup> Mile

Continued S  $80^{\circ}$  W. at 972 Vrs to W B line of J B Johnson  
sur 1524 Vrs S of NW cor of same and 328 Vrs N of G B  
Clough's S E cor. at 1445 Vrs pass 246 Vrs North of his  
S W cor. and the S E cor of Geo Spring sur. at 1900  $\frac{1}{10}$  Vrs  
set 4<sup>th</sup> mile Post from which a Pecan marked H F  
bears S  $39^{\circ}$  W  $12\frac{1}{10}$  Vrs

5<sup>th</sup> Mile

Continued S  $80^{\circ}$  W. at 324 Vrs the W B line of said Spring  
sur 156  $\frac{1}{10}$  Vrs N of S W cor of same and 222  $\frac{1}{10}$  Vrs S of  
A L Erwin NE corner at 900 Vrs Pecan creek course S,  
at 1296 Vrs W B line of sd Erwin Sur 390 Vrs S of his N  
W cor and 15 Vrs W of the S E cor of A E Butlers East

Sur, at 1900<sup>3</sup>/<sub>10</sub> Vrs set 5<sup>th</sup> Mile Post from which an Elm  
marked H bears N 80° E 7<sup>1</sup>/<sub>10</sub> Vrs & 5 Elms, one of which  
marked F bears S 70° E 19<sup>3</sup>/<sub>10</sub> Vrs

6<sup>th</sup> Mile Continued S 80° W at 804 Vrs S Black NW cor on E Blinn  
of A E Butters Met Sur 273 Vrs S of his NW cor at 1900<sup>3</sup>/<sub>10</sub>  
Vrs set 6<sup>th</sup> Mile Post from which a lone Cottonwood  
marked F bears N 24° E 98 Vrs

7<sup>th</sup> Mile Continued S 80° W. at 335<sup>3</sup>/<sub>10</sub> Vrs the WB line of said A E  
Butters Sur 510 Vrs S of his NW cor and 1457 Vrs N of the  
S E cor of Milton Gragg's Sur at 1180 Vrs Willow Oak break  
at 1810 Vrs Met spring of sd creek at 1900<sup>3</sup>/<sub>10</sub> Vrs set the 7<sup>th</sup>  
Mile Post from which an Elm H C bears S 53° E 6<sup>1</sup>/<sub>10</sub> Vrs and  
Elm marked F bears N 66° W 11<sup>1</sup>/<sub>10</sub> Vrs

8<sup>th</sup> Mile Continued S 80° W at 560 Vrs WB line of sd Gragg's Sur  
1101 Vrs N of his SW cor. at 1489 Vrs WB line of F H Fossett's  
Sur 988<sup>1</sup>/<sub>2</sub> Vrs W of his SW cor and 201 Vrs S of N E cor of E  
Johnson Sur at 1900<sup>3</sup>/<sub>10</sub> Vrs set 8<sup>th</sup> Mile Post

9<sup>th</sup> Mile Continued S 80° W. at 201 Vrs Branch course E of S at  
595 Vrs E B Line of W Kelly Sur 1530 Vrs N of his S E  
cor and E Johnson SW cor 1454 Vrs WB line of said Kelly's  
Sur 1381 Vrs W of his SW cor at 1822 Vrs WB line of E  
L Ragland Sur 956 Vrs W of S E cor of A Perry Sur,  
at 1900<sup>3</sup>/<sub>10</sub> Vrs set 9<sup>th</sup> Mile Post from which a Tripple  
Elm marked H C bears S 61<sup>1</sup>/<sub>2</sub>° W 37<sup>1</sup>/<sub>10</sub> Vrs, an Elm marked  
F C bears S 59° W 215 Vrs

10<sup>th</sup> Mile Continued S 80° W, at 602 Vrs Middle Sulphur Creek  
course SW, at 1076 Vrs WB Line of said Perry Sur 758 Vrs  
N of his SW cor and 96 Vrs W of S E cor of John Clayton  
Sur, at 1900<sup>3</sup>/<sub>10</sub> Vrs set 10<sup>th</sup> Mile Post from which a

double Walnut marked H. F. bears  $N 43\frac{1}{2} W 64\frac{1}{10}$  Vrs  
11<sup>th</sup> Mile Continued  $S 80^{\circ} W$ . at 36 Vrs Branch course W, at 306  
Vrs Branch Course North, at 1485 Vrs W B line of the J D  
Goodman Sur, 304 $\frac{1}{10}$  Vrs South of his NW cor 529 Vrs N  
of S E cor of S H Blish Sur, at 1900 $\frac{1}{10}$  Vrs set the 11<sup>th</sup> mile  
Post in Prairie

12<sup>th</sup> Mile Continued  $S 80^{\circ} W$ . at 1900 $\frac{1}{10}$  Vrs set 12<sup>th</sup> Mile Post

13<sup>th</sup> Mile Continued  $S 80^{\circ} W$ . at 216 Vrs small Branch, at 468 Vrs  
the Bonhau & Wolf City Road, at 1836 Vrs W B line of Wm  
Stons Sur 203 Vrs S of his NW cor and 374 Vrs N of S W  
Posters S E cor, at 1900 $\frac{1}{10}$  Vrs set the 13<sup>th</sup> Mile Post

14<sup>th</sup> Mile Continued  $S 80^{\circ} W$ . at 408 Vrs Short Creek Course S, at 529 $\frac{1}{2}$   
Vrs pass 295 Vrs N of the S S W corner of S W Poster Sur  
and 34 Vrs W of the N E cor of W Hendrix Sur, at 1515 Vrs  
Meet B Line of said Hendrix Sur 70 $\frac{1}{2}$  Vrs S of his NW cor and  
W Hords N E cor, at 1900 $\frac{1}{10}$  Vrs set the 14<sup>th</sup> Mile Post from  
which an Elm marked F C bears  $N 50\frac{1}{2} W 90$  Varas

15<sup>th</sup> Mile Continued  $S 80^{\circ} W$ . at 682 Vrs E B line of J Mc Chadwicks  
E Survey 463 Vrs W of his S E cor & 255 $\frac{1}{2}$  Vrs S of NW  
cor of J H King Sur, at 1402 Vrs Jones Creek Course  
S, at 1900 $\frac{1}{10}$  Vrs set the 15<sup>th</sup> Mile Post from which a  
large Elm marked F C bears  $N 55^{\circ} E, 13\frac{1}{10}$  Vrs

16<sup>th</sup> Mile Continued  $S 80^{\circ} W$ . at 734 Vrs pass 95 Vrs W of the S E  
cor of another Chadwick Sur, at 1900 $\frac{1}{10}$  Vrs set the 16<sup>th</sup>  
Mile Post from which an Elm marked F C bears  $N 6\frac{1}{2}$   
 $W 5\frac{1}{10}$  Vrs an Elm marked H C bears  $S 47^{\circ} E 8\frac{3}{10}$  Vrs

17<sup>th</sup> Mile Continued  $S 80^{\circ} W$ . at 288 Vrs Loring Creek Course S W at 828  
Vrs E B line of Davine Gullett Sur 1041 Vrs W of his S E cor  
and 259 Vrs S of J Mc Chadwicks NW at 1900 $\frac{1}{10}$  Vrs set the

17<sup>th</sup> Mile Post from which an Elm marked H F C bears  
S 58° W 221 Vrs

18<sup>th</sup> Mile Continued S 80° W, at 279 Vrs Hickory Creek Course S E  
at 1900<sup>3</sup>/<sub>10</sub> Vrs set 18<sup>th</sup> Mile Post from which an Elm marked  
F C bears N 34° E 16<sup>3</sup>/<sub>10</sub> Vrs a Double Elm marked H C bears  
S 25° E 3<sup>1</sup>/<sub>4</sub> Vrs

19<sup>th</sup> Mile Continued S 80° W, at 45 Vrs Rainbow Creek Course  
S, at 1900<sup>3</sup>/<sub>10</sub> Vrs set the 19<sup>th</sup> Mile Post from which an  
Elm marked F C bears N 73<sup>1</sup>/<sub>2</sub>° W 10<sup>3</sup>/<sub>10</sub> Vrs an Elm marked  
H C bears S 76° E 11<sup>1</sup>/<sub>10</sub> Vrs

20<sup>th</sup> Mile Continued S 80° W, at 247 Vrs W B line of Daniel Bullen  
Sur 77 Vrs W of his S W cor at 594 Vrs South Sulphur  
Creek Course S E, at 1900<sup>3</sup>/<sub>10</sub> Vrs set the 20<sup>th</sup> Mile Post from  
which a double Elm marked F C bears S 60° W 13<sup>3</sup>/<sub>10</sub> Vrs  
an Elm marked H C bears S 58° E 13<sup>3</sup>/<sub>10</sub> Vrs

21<sup>st</sup> Mile Continued S 80° W, at 155 Vrs E B line of O Ferrisworth  
Sur 2213 Vrs W of his S E cor and 1600 Vrs N of a S W cor  
of W Morgan Sur, at 1524 Vrs W B line of said Ferrisworth  
Sur 1976 Vrs N of his S W cor and 632 Vrs W of the S E cor of  
Martin Moore scrip Sur No 40, at 1900<sup>3</sup>/<sub>10</sub> Vrs set the 21<sup>st</sup> Mile  
Post from which a double Elm marked F C bears S 20<sup>1</sup>/<sub>2</sub>° W  
22<sup>1</sup>/<sub>2</sub> Vrs an Elm marked H C bears S 3<sup>1</sup>/<sub>4</sub>° E 29<sup>1</sup>/<sub>2</sub> Vrs

22<sup>nd</sup> Mile Continued S 80° W, at 1039 Vrs W B line of said Martin Moore  
Sur No 40 367 Vrs N of his S W cor and the S E cor of Moore  
Sur No 39 at 1136 Vrs Moor Pacific R R, at 1900<sup>3</sup>/<sub>10</sub> Vrs  
set the 22<sup>nd</sup> Mile Post from which an Elm marked H C  
bears S 63<sup>1</sup>/<sub>2</sub>° W 5<sup>1</sup>/<sub>2</sub> Varas

23<sup>rd</sup> Mile Continued S 80° W, at 546 Vrs W B line of sd Moore Sur  
No 39, 103 Vrs N of his S W cor & the S E cor of W Moore No

38 at 810 Vrs Rock Creek Course S at 1900 $\frac{7}{10}$  Vrs set 23<sup>rd</sup> Mile Post from which an Elm marked H C bears S 49° N 6 $\frac{1}{10}$  Vrs an ash marked F C bears N 61° W 10 $\frac{1}{10}$  Vrs

24<sup>th</sup> Mile Continued S 80° W. at 8 Vrs N B line of Mo Moore Sur No 29-161 Vrs S of his W W Cor and 1183 Vrs W of the S E Cor of John Roberts Sur, at 1900 $\frac{7}{10}$  Vrs set the 24<sup>th</sup> Mile Post from which a Spanish Oak marked H C bears S 76° E 11 $\frac{1}{10}$  Vrs marked F C bears N 19° E 13 Vrs

25<sup>th</sup> Mile Continued S 80° W. at 900 Vrs Lees Creek Course S. at 980 Vrs N B line of said Roberts Sur 639 Vrs N of his S W Cor and 34 Vrs W of the S E Cor of Sec No 37 University Land situated in Pannin Co. at 1854 Vrs Branch Course S at 1900 $\frac{7}{10}$  set the 25<sup>th</sup> Mile Post from which an Elm marked F C bears N 45° E  $\frac{7}{10}$  Vrs an Elm marked H C bears S 19° E 10 $\frac{1}{10}$  Vrs

25<sup>th</sup> Mile Continued S 80° W at 457 Vrs the W E Cor of Gollin County as set by G W Noyes at 733 set a Post on S B line of Pannin County

+  
733 Varas

The end of each mile is marked by a large Poised and Post 5 feet in length and set 3 feet in the ground, on the North side of each Post were placed the letters F C, on the South side of each Post were placed the letters H C and on the East side of each Post was placed the No of the mile Post

State of Texas } We W H Surveyor for Pannin  
County of Pannin } Co and H Y Kency Surveyor for  
Hunt Co do hereby certify that the foregoing Pages are  
correct field notes of the line between Hunt and Pannin  
Counties as established by us that the line was carefully

and Correctly run and all objects of note on or near  
the line are noted in said field notes, and the diagram  
accompanying the same is a correct map of surveys on  
either side of said line

The Survey was begun June 23<sup>rd</sup> and finished July 10<sup>th</sup>  
A D 1885

J N Briscoe } Chain  
John Shipley } Barriers  
Lotrobs Carroll, Flagman  
W B Keithly, Marker

Witness our hands this 28<sup>th</sup> day of July A D 1885

W B Keithly Surveyor Fannin Co Texas

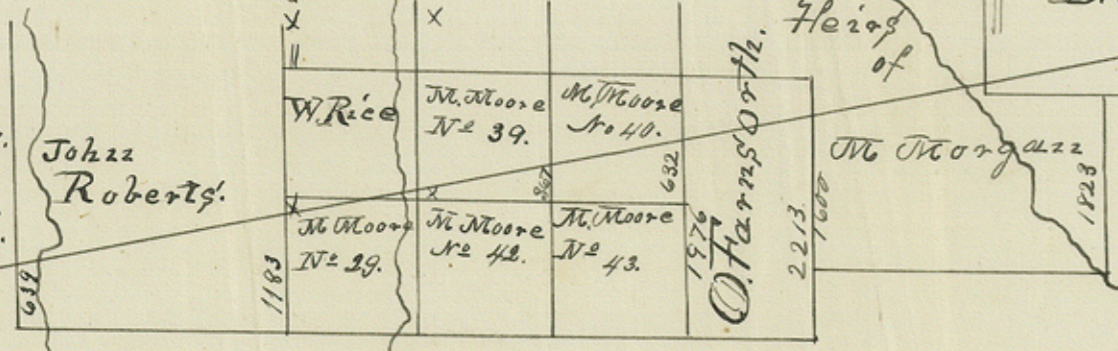
W G Kinney Surveyor Hunt Co Texas

The State of Texas }  
Fannin County } I J P Noble clerk of the  
County Court in and for Fannin County Texas do hereby  
certify that the above and foregoing is a true copy of the  
Report of W B Keithly Surveyor for Fannin County and  
W G Kinney Surveyor for Hunt County Texas of the boundary  
line established by them by Resurvey made from the 23<sup>rd</sup>  
day of June 1885 to the 10<sup>th</sup> day of July 1885 the Original  
of which is now on file in my office and Recorded on  
Pages 39-40-41-42 & 43 Vol 21 Fannin County Records  
Deeds Bonds &c

Given under my hand and seal  
this 12<sup>th</sup> day of August A D 1885

J P Noble clerk  
Fannin County Texas

Sec 137.  
U.I.<sup>d</sup>  
Fannin  
County.



D. Cullen.

J.M. Chadwick  
J.M. Chadwick

J.M. Chadwick

J.M. Wood  
N. Hendrix

W. Stone

S.K. Blish.

J. Clayton

A.L. Terry  
F. Ralston  
W.W. Kelly  
F. Johnson

C.F. Fog  
Milton

Gregg

A.E. Butler

A.E. Butler

Johz Joring

J.B. Clough

J.S. Johnson

Jno. Fizer

Samuel Corley

X - The F. Griffith Survey.

# MAP of Fannin & Hunt County Line.



3/ Fannin & Hunt  
County Line

Received in Genl S<sup>d</sup> Office  
Aug. 31<sup>st</sup> 1885

D. N. Robinson  
Clerk

See Record Corrected Abstract  
p 45 for Copy of Correction  
forwarded Comptroller

Beaumont

11/6/85  
down with stamp office  
Custer Street