

"FAYETTE and AUSTIN COUNTY:"

-----oOo-----

Field Notes by H.B. Hill, dated 1876 -	Page 2
{ Letter Instruction G.L.O. -	" 5+6
{ Field notes dated 11/1/1882	" 6 to 8
Plot	" 10

This day came on to be heard the order from Commissioners Court of Austin County to have the County line between the Counties of Austin and Fayette, surveyed & marked out. It is therefore ordered by the Court that the County Surveyor of Fayette be., and he is hereby appointed to meet the County Surveyor of Austin County at the North West corner of the David Shelby League on the 13th day of September, A.D. 1876, and proceed to survey said line to the South West corner of Samuel O. Peltus league.

-----oOo-----

THE STATE OF TEXAS, |
COUNTY OF FAYETTE. | I, ALBERT F. MACH, Clerk of the County Court and ex officio Clerk of the Commissioners' Court, Fayette County, Texas, do hereby certify that the above and foregoing is a true and correct copy of the Order of the Court, ordering the County Surveyor, to survey and mark out the County line, between the Counties of Fayette and Austin, etc., as the same appears of record, in Volume 1, upon page 39, Minutes of the Commissioners Court of Fayette Co., Texas.

GIVEN UNDER MY HAND AND THE SEAL OF SAID COURT, at my office, in the city of La Grange, Texas, this the 22nd. day of June, A.D. 1927.

ALBERT F. MACH,
Clerk County Court, Fayette County, Texas, &
Ex Officio Clerk, Commissioners Court, of
Fayette County, Texas.

By *P. D. Frank*, Deputy.

-----oOo-----

Wednesday 15, Nov'r. A. D. 1876.

Report of
H.B.Hill.

To the Honorable Commissioners Court of Fayette County.

To November Term, A.D. 1876.

In obedience to the order of your Honorable Court, dated 3rd. day of August, A.D. 1876, to ascertain survey and mark the County line between Fayette and Austin Counties. Beginning at the South West corner of the David Shelby league of land proceeded on the day appointed by said order to meet on the 13 day of September, 1876, and by and with the assistance of Richd. _____, Esqr. County Surveyor of Austin County appointed for the purpose by the Honorable Commissioners Court of said Austin County, run the said County line as specified by your order. To a better understanding of said line I would respectfully refer your Honorable body to the annexed plat and would from there state that in marking said line we either used stakes or whenever practicable marked the trees along the line by three horizontal parallel notches. Beginning at the point as designated, we run the line with a variation of the Needle of (10° East) ten degrees East in a direct course S. 30° 17' E. at 1948 vs to the N.W. boundary line of the Wm. Sheppards league at 5-5-21 vs. to the S. E. line of said league being also the N.W. line of the Jno. Jones league at 8940 vs. to the N.West line of the Jos. Miles leagues at 9195 vs. to the N.W. line of the Wm. Burnet League 123 vs. N. 43° E. from the S.W. corner of said leagues at 13845 vs. to the S.E. line of said Jos. Miles league being the divisional line of Fayette County and Colorado County, at 21204 vs to the S. W. corner of Sam O. Petus league.

H. B. Hill
County Surveyor of Fayette Co.,

-----oOo-----

See Corrected boundaries as described in County Remondino's Austin Co. also Fayette Co. Batts Civil Statute 1895-

See Copy letter heads attached from Comm. G.H.O.

THE STATE OF TEXAS, |

COUNTY OF FAYETTE. | I, ALBERT F. MACH, Clerk of the
and Ex Officio Clerk of the Commissioners' Court,
County Court, /in and for Fayette County, Texas, do hereby
certify that the above and foregoing is a true and correct
copy of the Report of the County Surveyor, as to surveying
the County line, between Fayette and Austin County, etc.,
as the same appears of record, in Volume 1, upon page 62,
Minutes of the Commissioners' Court, in and for Fayette
County, Texas.

WITNESS MY HAND AND THE SEAL OF SAID COURT, at my
office, in the city of La Grange, Texas, this the 22nd.
day of June, A.D. 1927.

ALBERT F. MACH,
Clerk County Court, & Ex Officio Clerk,
Commissioners' Court, in and for
Fayette County, Texas.

By *V. L. Brank*, Deputy.

-----o0o-----

It is ordered by the Court that the County Surveyor of this County in conjunction with the surveyors of adjoining Counties be authorized and directed to ascertain by actual survey the boundary lines of Fayette County or any part thereof of said County, not yet sufficiently and well defined and determine at the same time the amount of acres in the border surveys or portions of them lying in Fayette County and to report to the court a correct list of the surveys penetrated by the County line, also a correct map of said Co. line and border surveys as required by law in Sect. 1 of the Act of April 22, 1879 to provide for ascertain and establishing the boundaries of Counties, to be recorded in the surveyors Book. And the Clerk of this Court notify the Clerk of the various Counties adjoining Fayette, of this order.

-----oOo-----

THE STATE OF TEXAS, |
COUNTY OF FAYETTE. | I, ALBERT F. MACH, Clerk of the County Court and ex officio clerk of the Commissioners' Court, in and for Fayette County, Texas, do hereby certify that the above and foregoing is a true and correct copy of the Order of the Court, authorizing the County Surveyor to survey and mark out the line between Fayette County and Austin County, etc., as the same appears of record, in Volume 2, upon page 63, Minutes of said Court, in and for Fayette County, Texas.

WITNESS MY HAND AND SEAL OF SAID COURT, at my office, in the city of La Grange, Texas, this the 22nd. day of June, A.D. 1927.

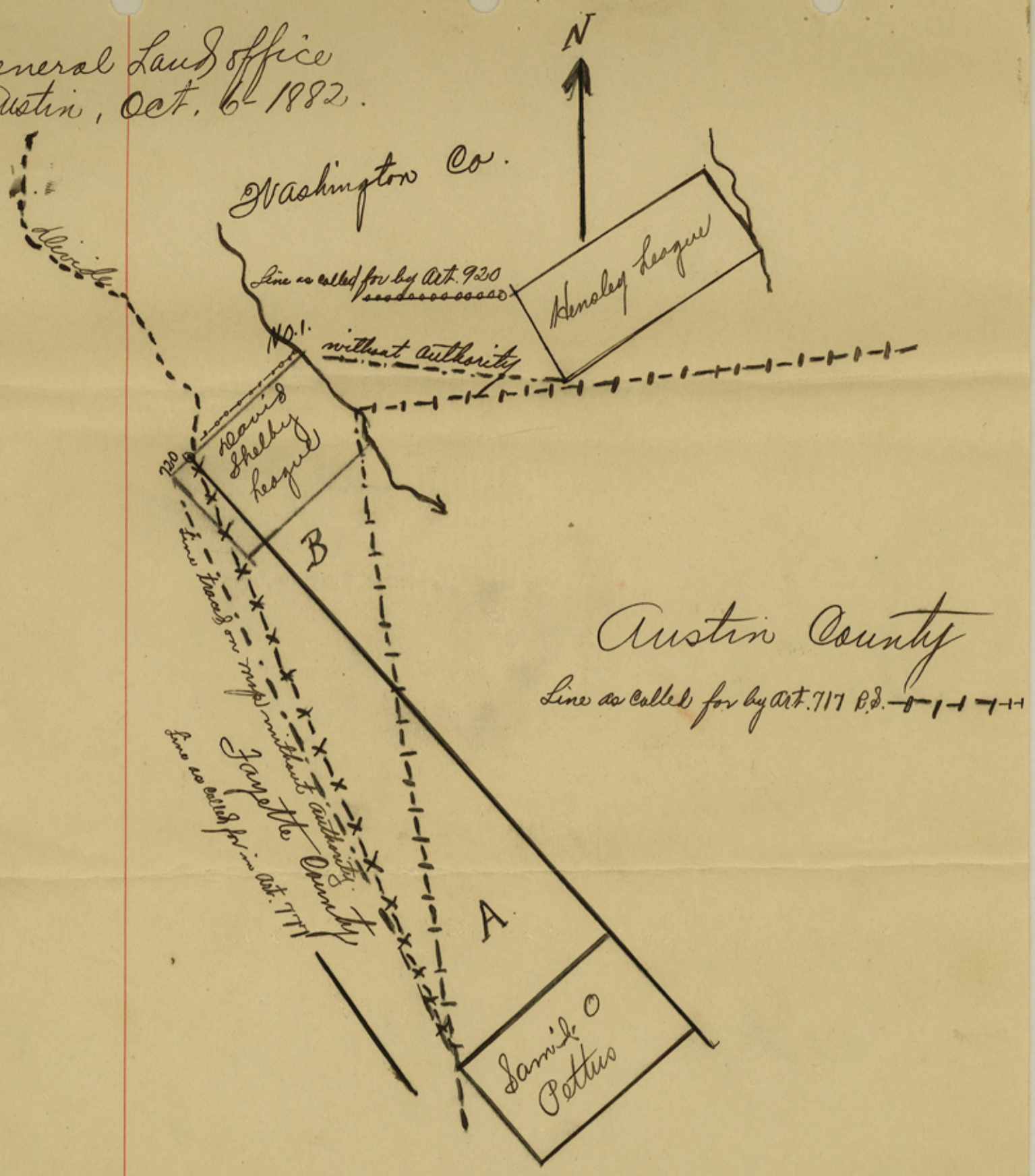
ALBERT F. MACH,
Clerk County Court, and Ex Officio Clerk
Commissioners' Court, in and for
Fayette County, Texas.

By *R. L. Brank* Deputy.

-----oOo-----

40

General Land Office
 Austin, Oct. 6-1882.



Messr. R. A. Doss &
 J. H. Machemehl.
 Bellville & La Grange.

GENTLEMEN:

I have carefully read your statement of disagreement, as to your common line between Austin & Fayette Counties. Enclosed I send you a rough sketch of the Country in question. I am at a loss to know how you Gentlemen get to the North corner of the Shelby league marked No. 1. The field notes of Austin County Art. 717, call for a direct line from the S. cor. of Hensley to the Shelby League and not

for any corner thereof; Thence to the Pettus league including it in Austin Co., Fayette Co., Art.777, comes with the divide to the line of David Shelby (not to any corner) and thence in a direct line to Pettus league including it in Fayette County. These two lines cross each other & place the Pettus & triangle North of it in both Counties and leave the Shelby Leag. & Triangle South of it attached to no County Washington Co. calls as does Austin Co. to run from corner of Hensley lea. to Shelby Lea. and Thence with said Lea. to the divide. This line is indicated by line on ___ (o-o-o-o-o-) If however the line from Hensley corner to cor. of David Shelby mkd. No.1, has been agreed on by Washington & Austin Co's. it need not be disturbed and the line of Washington from said corner to the divide may be accepted as the line of Austin Co. From this point, which appears to be 720 vs. from the West or S.W. cor. of Shelbys Lea. you Gentlemen will run a line to the West corner of the Pettus league, as the line between Austin & Fayette Co's. this line is marked -x-x-x-x-x-x-x-x-. From the confused and contradictory terms of the statutes they cannot be literally followed and this line will disturb the present boundaries less then any possible under the law.

Respectfully

W. C. Walsh,

Comr.

Report of Survey of Austin & Fayette County line.

In accordance to an order of the Hon. Commissioners Courts of Fayette & Austin Counties issued at their Spring term in 1882 to ascertain & establish by actual survey as well as to mark out the line between the said two Counties we the undersigned surveyors, R. A. Doss of Fayette & J. H. Machemehl, of Austin Counties after meeting on said line disagreed in regard to the beginning point as the confused & contradictory terms of the R. Statutes would not permit a definit under-

standing there upon submitted our case to the Commissioner of the General Land Office whose decision attached to this our Report, governed us establishing the said line between the Counties of Fayette & Austin of which the Field Notes are as follows to-wit:

Beginning at the point where the N.W. bdy. line of the David Shelby league crosses the divide of the waters of the Colorado & Brazos rivers 720 vs. N. 43° E. of the most Western corner of said league which said point is the old South cor. of Washington County where we set a Cypress post 8x8 square and 5 feet long and is set 3 feet in the ground and is marked with the initials of the respective Counties, F.A.W. ingraved in said post and is designated on the annexed Plot as No.1. Thence running on a direct line to the West corner of the Sam. O. Pettus league the course of which we found to be S. 28° 30' E. at a variation of 9°50' E. at 1000 vs. point of Timber a P.O. mkd. F A at 1050 vs. across the head of Hawcreek at 1901 vs set a likewise Post designated on the plot as No.2 in J.Voelkels field. Thence same course at 364 vs. across the S.W. line of D.Shelby league at 820 vs. cross Jones Creek at 1060 vs. across said creek the third time at 1700 vs. across the N.E. fork of sd. creek at 1901 vs set a likewise Post in B.Treibigs Pasture which is designated on the Plot as No.3. Thence same course at 162 vs. across the N.E. bdy. line of the W.W.Sheppard league 540 vs. S. 43° W. of the N.E. corner of said league, also South corner of D.Shelby league and 660 vs. N. 43° E. from the West corner of the W.Southerland league at 800 vs. passing about 100 vs. S.W. of C.Albert's dwelling house at 19001 vs set a likewise Post in Ch. Heniger field designated on the Plot No.4. Thence same course at 473 vs. across the S.W. line of the Wm. Southerland league on the N.E.bdy.line of the J.R.Jones league 1450 vs. S. 47° E. from its North corner and 1840 vs. from its East corner at 500 vs. cross a

See Corrected boundaries as shown in Better Revised Statutes 1891 -
(All maps show this line correctly) Clark

branch run'g. N.W. at 560 vs. passing 40 vs. S.E. of Wm. Krebs North corner at 1360 vs. across Krebs branch running almost West at 1901 vs. set a likewise Post in Krebs Pasture on the S. bank of a ravine designated on the Plot as No.5. Thence on same course at 435 vs. crossing the S.E. bdy. line of the J.R.Jones league 590 vs. S. 43° W. of the East cor. of said league at 676 vs. across the S.E. line of the little stripe of the J.Mills league and the N.W. line of the W. Burnet league 800 vs. N. 43° E. from her West corner and 700 vs. S. 43° W. from the N.E. cor. of Jos. Mills league at 1100 vs. across T.Bulows S.W. line at 1901 vs. set a likewise Post in F.Scharrenbergs field designated on the Plot No.6. Thence at 310 vs. across Scharrenbergs S.E. line at Cha. Laas N. cor. at the crossing of the Roeders mill & New Ulm and Fayetteville & Brenham roads at 1420 vs. across the S.W. line of W.Burnets league 2400 vs. S. 47° E. of the West corner of the W.Burnet league & 1570 vs. N. 47° W. of her South corner. Thence at 1600 vs. cross a band of Andrews Branch at 1901 vs. set a likewise Post in Schultz field about 50 vs. S. of sd. branch designated on the Plot as No.7, Thence same course at 270 vs. cross Andrews branch at 1090 vs. set a likewise Post in A.Lindemanns field for the corner of Fayette & Colorado Counties 535 vs. S. 38° W. of the S. corner W.Burnets league said Post is mkd. with the initials of the respective Counties, A.F.C., and is designated on the Plot as No.8. Surveyed on the 30th. & 31st. of October & 1st. of November, 1882.

R. A. Coss, C. S. F. C.

J.H.Machemehl, C.S. A. C.

C. A. Doss,

Chain Carriers..

H. Achenbach,

STATE OF TEXAS, |
COUNTY OF FAYETTE. |

We the undersigned surveyors R.A.Doss of Fayette County, & J. H. Machemehl of Austin County, do hereby certify that the heretofore described survey was made by us according to law, and that the lines & boundaries are actually run'd. measured on the ground that the marks and corners natural & artificial are truly described in the foregoing Plot & Fieldnotes that we examined the same and find them correct. This the 2'd. day of November, A.D. 1882.

R. A. Doss, C. S. F. C.

J. H. Machemehl, C. S. A. C.

-----oOo-----

David Shelby League

Scale of 10000
to the inch.

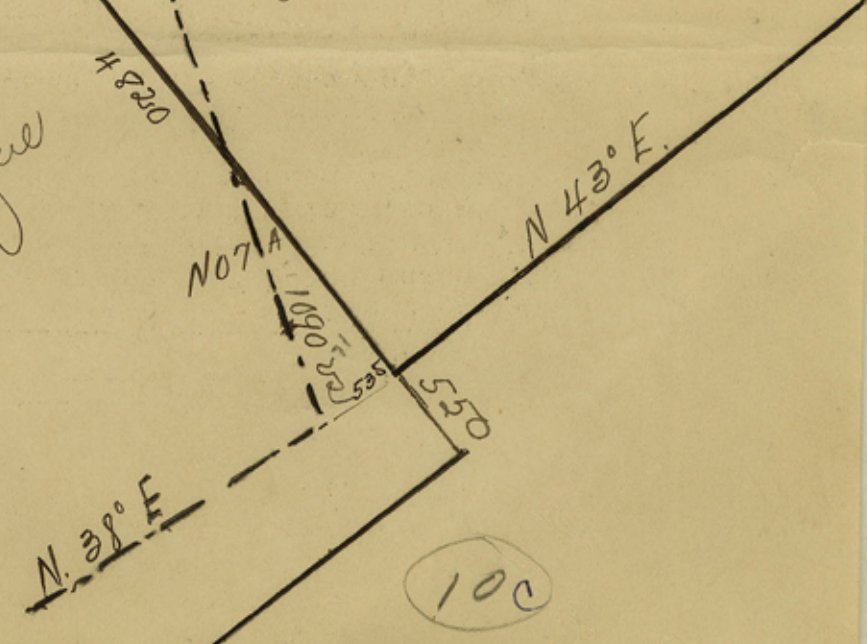
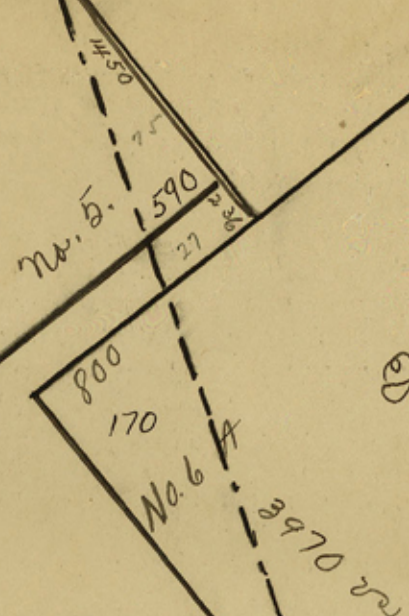
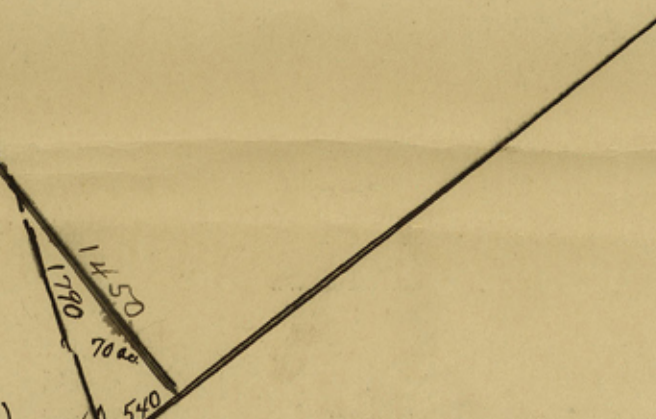
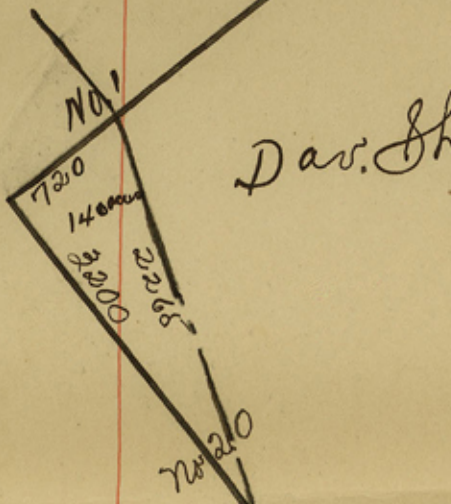
Wm. W. Sheppard League
4258 acres in depth

Wm. Sutherland League

John R. Jones League

Wm. Burnett League

James Miles League



THE STATE OF TEXAS, |

COUNTY OF FAYETTE. | I, ALBERT F. MACH, Clerk of the
County Court, in and for Fayette County, Texas, do hereby
certify that the above and foregoing is a true and correct
copy of the Report of the Fayette County Surveyor and
Austin County Surveyor, as to surveying the line, between
Fayette and Austin County, together with the plats thereto,
as the same appears of record, in Volume "A", upon pages
247 to 249, Surveyor's Record, in and for Fayette County,
Texas.

GIVEN UNDER MY HAND AND THE SEAL OF SAID COURT, at my
office, in the city of La Grange, Texas, this the 22nd.
day of June, A.D. 1927.

ALBERT F. MACH,
Clerk County Court, Fayette County, Texas.

By *A. D. Frank*, Deputy.

-----000-----

This day came on to be heard the Report of R. A. Doss, County Surveyor on the line between Fayette and Austin Counties and the same having been examined and found correct. It is ordered that the same be approved.

-----oOo-----

THE STATE OF TEXAS, |
COUNTY OF FAYETTE. | I, ALBERT F. MACH, Clerk of the
County Court, and ex officio Clerk of the Commissioners'
Court of Fayette County, Texas, do hereby certify that the
above and foregoing is a true and correct copy of the Order
of the Commissioners' Court, approving the Report of the
County Surveyor, as to surveying the County Line, between
Fayette and Austin County, etc., as the same appears of
record, in Volume 2, upon page 154, Minutes of the Comm-
issioners' Court, of Fayette County, Texas.

WITNESS MY HAND AND THE SEAL OF SAID COURT, at my office
in the city of La Grange, Texas, this the 22nd. day of
June, A.D. 1927.

ALBERT F. MACH,
Clerk County Court & Ex Officio Clerk
Commissioners' Court, in and for
Fayette County, Texas.

By *W. H. Frank*, Deputy.

-----oOo-----

12
c

Fayette Co. Bdry., (3)
County Line

Fayette & Austin
Counties

Filed June 28th 1927

J. I. Robinson, County
Clark
