

"FAYETTE and LEE COUNTY.

-----oOo-----

Field notes dated 2/7/84 Pages 3, 4 + 5.

It is ordered by the Court that the County Surveyor of this County, in conjunction with the surveyors of adjoining Counties be authorized and directed to ascertain by actual survey the boundary lines of Fayette County or any part thereof of said County, not yet sufficiently and well defined and determine at the same time the amount of acres in the border surveys or portions of them lying in Fayette County and to report to the Court a correct list of the surveys penetrated by the County line. Also a correct map of said Co. line and border surveys as required by law, in Sect. 1 of the Act of April 22, 1879, to provide for, ascertain and establishing the boundaries of Counties, to be recorded in the Surveyor's Book. And the Clerk of this Court notify the Clerk of the various Counties adjoining Fayette of this order.

-----oOo-----

THE STATE OF TEXAS, |
COUNTY OF FAYETTE. | I, ALBERT F. MACH, Clerk of the County Court, and ex officio Clerk of the Commissioners' Court, of Fayette County, Texas, do hereby certify that the above and foregoing is a true and correct copy of the order of the Commissioners' Court, ordering the County Surveyor to survey the County Line, between Fayette County and Lee County, etc., as the same appears of record, in Volume 2, upon page 63, Minutes of the Commissioners Court, in and for Fayette County, Texas.

WITNESS MY HAND AND THE SEAL OF SAID COURT, at my office, in the city of La Grange, Texas, this the 23rd. day of June, A.D. 1927.

ALBERT F. MACH,
Clerk County Court, and Ex Officio Clerk
Commissioners' Court, Fayette Co. Texas.
By *W. H. Brant* Deputy.

-----oOo-----

This day the 14 day of November, 1883, came on to be heard the certified copy of an order of the Commissioners Court of Lee County, in regard to the establishment and survey of the County line of Fayette and Lee Counties; It is therefore ordered that R.A.Doss, County surveyor be and is hereby appointed and instructed to meet the surveyor of Lee County, on Monday the 26th. day of November, 1883, at 9 o'clock A.M., at the S.W. corner of the David G. Green, survey, then and there in conjunction with said surveyor of Lee County to ascertain by actual survey the boundaries line of said County and corners in the manner prescribed by the Act. of April 22d. 1879, and the clerk of this Court is hereby ordered to send to the Commissioners Court of Lee County a copy of this order under the seal of this Court.

-----oOo-----

THE STATE OF TEXAS, |
COUNTY OF FAYETTE. | I, ALBERT F. MACH, Clerk of the Co.
Court, and ex officio clerk of the Commissioners Court of
Fayette County, Texas, do hereby certify that the above and
foregoing is a true and correct copy of the Order of the
Commissioners' Court, as the same appears of record, in
Volume 2, upon page 264, Minutes of the Commissioners' Court,
in and for Fayette County, Texas.

GIVEN UNDER MY HAND AND THE SEAL OF SAID COURT, at my
office, in the city of La Grange, Texas, this the 23rd. day
of June, A.D 1927.

ALBERT F. MACH,
Clerk County Court, Fayette County, Texas.
By *R. P. Frank*, Deputy.

-----oOo-----

26

THE STATE OF TEXAS, |
COUNTY OF FAYETTE. | Surveyors Report on Lee & Fayette
County Line.

To the Honorable Commissioners of Fayette County:

(Approved Feb. 14, 1884.).

Whereas during the the November term, A.D. 1883, an order was issued by your honorable body for a survey of the line of Fayette & Lee Countys & for your County Surveyor to meet the County Surveyor of Lee County on the 26 day of Nov'r 1883, and to proceed together to run & mark out said line and as I went & found the Lee County Surveyor not prepared to mark out said line lawfully, we posponed the survey untill we properly p~~e~~paired ourself and on the 30th. day of January 1884, we met again and proceeded as follows, to-wit:
Beginning at the S.W. corner of the D.G. Greens league a post for corner of Lee & Fayette Counties mkd. F. & L. Thence started the trial line on a course of N. $61-1/4^{\circ}$ E. at 6050 vs. we crossed the line of the D. G. Green league & Reed survey at 820 vs. more cross line of Reed & Boon surveys at 4 miles & 1280 vs. crossed Boons & Clemens line at 5 miles & 1570 vs. cross line of Clemens & Lewis surveys at 7 miles & 1270 vs. cross line of Lewis & Goodwin surveys at 8 miles & 1700 vs. across the line of Goodwin & McDaid surveys at 10 miles & 1330 vs. across John Gollrads line & at 12 miles & 250 vs to a point N. 29° W. 230 vs. from the West corner of the Algeruon Thompson survey. Thence beginning at the North corner of a league of land for the heirs of G.DeWitt. Thence S. 45° W. with the N.W. line of said league & the N.W. lines of Taylor, Woods & A. Thompson surveys to the west corner of said survey a distance of 8382 vs. on which we set 5 posts with the initials of the Counties engraved. Thence Beginning at said Algeruon Thompsons West corner a post from which a P.O. bears N. 11° W. 10 vs. a do bears West mkd. L. 13 vs. a do mkd. F. bs. S. 22 vs. (This corner is in the bed of a branch) Thence on a true line S. 62° W.

(variation $9^{\circ} 50'$ E) at 620 vs. across the line of Clemens & Robbins surveys 575 vs. from E. corner of Clements survey which is the North corner of Robbins & 985 vs. from S. corner of Clements Survey. Thence at 1660 vs. cross the Clements & Brazeal line 300 vs. from Clements West corner & 350 vs. from Brazils North corner & 341 vs. from the South corner of Clements survey at 2100 vs. we crossed Greens Creek set the 11 mile Post on Giddings & Long Prairie Roads. Thence passing near the South corner (60 vs. S.E.) of the John Gollrad survey. Thence across the N.E. line of Samuel McDaid & 82 vs. N.W. of its East corner set the 10 mile Post 300 vs. S.W. of E. Maas Pasture at 1900 vs. set the 9 mile post on East Bank of little Greens Creek. Thence crossing McDaid & Goodwin line 1808 vs. from its West corner and 1080 vs from its South corner. Thence at 1300 vs. cross Pin-Oak set 8 mile Post. Thence crossing the Goodwin & Riddle line 70 vs. S. 56° E. from its North corner. Thence crossing the Riddle & Lewis line 145 vs. from Riddles North corner & 2743 vs. from the South corner said Wm. Lewis league at 1550 vs. cross Rabbs Creek at 1900 vs the 7 mile Post about 60 vs. North of Mathews Rasperiks dwelling house. Thence crossing the Lewis & Clements line & (set the 6 mile Post on Wm. Lewis league) 1845 vs. from Clements East corner & 1315 vs. from Lewis Louth corner and 1957 vs. from the North Corner of said Clements survey at 870 vs. S. 62° W. cross Rubitz Creek. Thence set the 5 mile post on E. bank of a branch at 600 vs. across Boons & Clements line 958 vs. from the North corner of Boons survey which is the West corner of Clements survey & passing 40 vs. North of Hillbergs crib & set the 4 mile Post on the west side of a branch in C. Hillbergs field. Thence crossing the Boon & Reed line 55 vs. N. 34° E. from the West corner of the Boon survey. Thence crossing the N.E. line of the D.G. Green league 50 vs. North of an old subdivision corner and 1700 from the N.E. corner of Greens league & 1372 vs from the S.W. corner of the Reed

survey Thence at 350 vs. set the 3 mile post in Mustang
Prairie & thence set the 2d. mile Post and first Mile post
on the D. G. Green League. Thence to the place of beginning
where we set a Post mkd. F. & L.

Surveyed Februar_ 7th., 1884.

C. A. Doss

Chain Carriers.

Chr. Domask.

R. A. Doss, C. S. F. C.

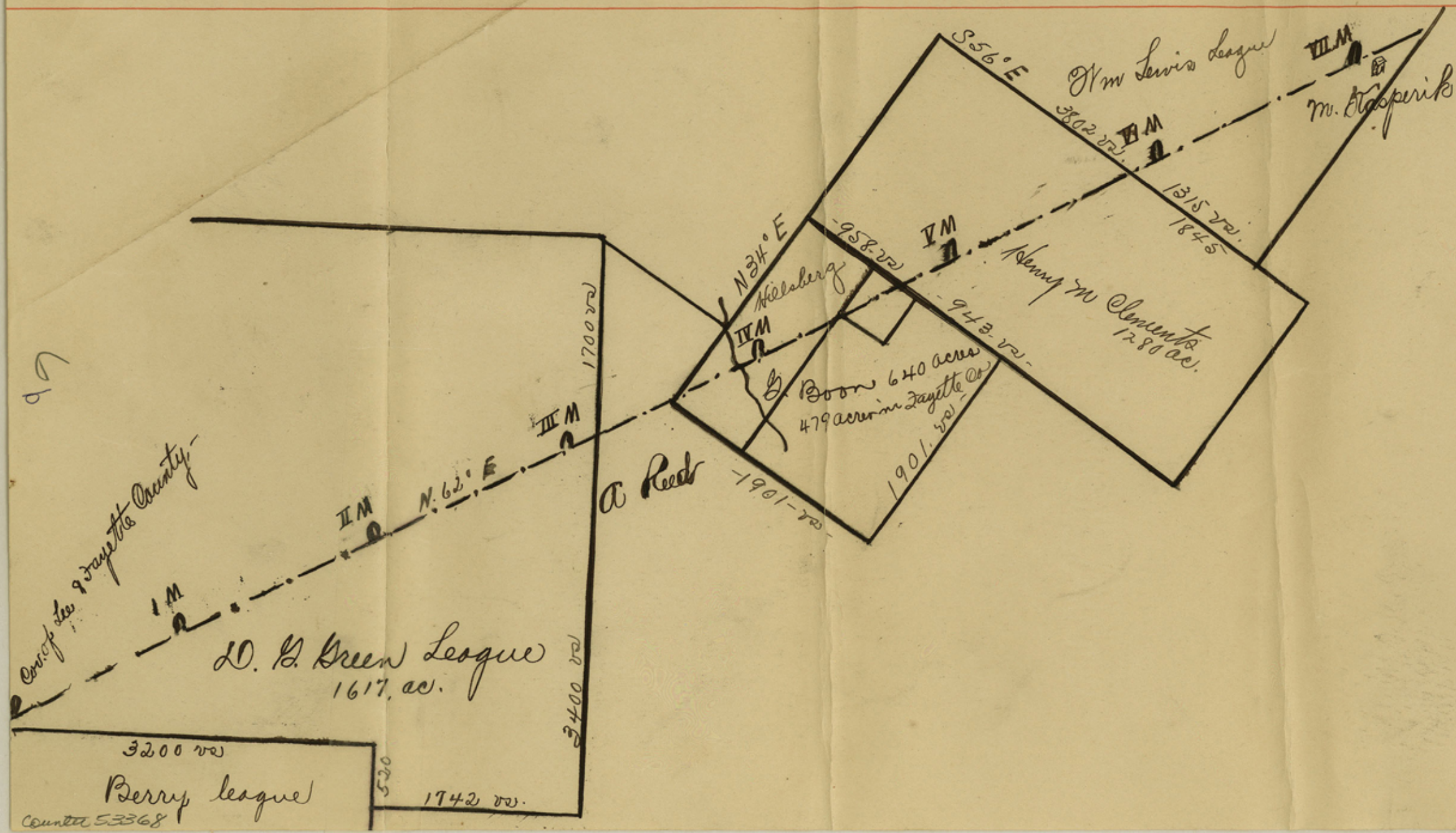
R. E. Harris, C. S. L. C.

We, the undersigned surveyors of Lee & Fayette Counties
do hereby certify that the foregoing survey of County line
was made by us actual on the ground in accordance to a act
creating Lee County that all the distances and corners as
described in the above field notes are correct and all the
marks artificial or natural are made by us as set forth in
the above field notes. Given under our hands and offices,
this the 7th. day of February, A.D. 1884.

R. A. Doss, C. S. F. C.

R. E. Harris, C. S. L. C.

Does not cover all the line



THE STATE OF TEXAS, |

COUNTY OF FAYETTE. | I, ALBERT F. MACH, Clerk of the County Court, of Fayette County, Texas, do hereby certify that the above and foregoing is a true and correct copy of the Report of the County Surveyor, surveying the County Line, between the Fayette County, and Lee County, as the same appears of record, in Volume "A", upon pages 250 to 251, Surveyor's Record, in and for Fayette County, Texas.

WITNESS MY HAND AND THE SEAL OF SAID COURT, at my office, in the city of La Grange, Texas, this the 23rd. day of June, A.D. 1927.

ALBERT F. MACH,
Clerk County Court, Fayette County, Texas.

By *P. L. Braneck*, Deputy.

-----oOo-----

Jayette Co. Bdry. (4)
County Line
Fayette & Lee Cos.

Filed June 28th 1927
J. H. Robison, Cour-
Clock

OK
See F/ri² Lee Co. filed 6/10/10