

3/ Co. B. 1st of
Fisher County,

Abstract Comed and
Copy furnished the Comdr
Oct 24/87 G. W. Beaumont

Separate Land District
on road after
Oct. 24/87



1
2
3
4
5
6
7
8
9
10
11
12
13
14
15
16
17
18
19
20
21
22
23
24
25
26
27
28
29
30
31
32
33

Field Notes of the
Boundary Lines
of
Fisher County Texas

Surveyed by J. P. Bagley
September 1887

Variation 10° 22' East

Page
13/33
County Series of
Fisher Co

Abstract Corrected
Oct 24th 1887 and a
Copy furnished the
Comptroller of Public
Accounts
G. W. Beaumont

10-1887
W & N 1/2 S

The State of Texas
Fishes County Field Notes of a Survey

of the West line of Fishes Co,
Beginning at the North west corner of Nolan
County which is also the South west corner of
Fishes County, described as follows, to wit:
A stone 2" x 6" and 18" high marked S. L. F. C.
W 30. S W. C.

1" Mile

Thence North 560 varas cross the North line
of survey No 3 Block No 2, 4 surveyed for the
Texas and Pacific Rail Road Company, at 876 var
pass a point 142.0 varas west from the N.E. corner
of said section No 3, at 1900 varas a stone 2 1/2" x 9"
and 2 1/4" high marked W. L. F. C. N 1 set for the first
mile

2" Mile

Thence North at 600 varas cross Roby and
Colorado City road, at 833 varas a point 947 varas
west from the N. W. corner of section No 20 Block 3
at 955 varas cross North line of said section No 20
at 1900 varas a stone 3" x 8" and 18" high marked
W. L. F. C. N. 2,

3" Mile

Thence North at 979 varas a point 948 varas East
from the N. W. corner of section No 43, Block 3, at
386 varas cross North line of said section No 43,
at 2216 varas cross South boundary line of section
No 2, 4 Block 3, Houston and Texas Central Rail Road
Company, at 1900 varas a stone 2" x 5" and 18" high
marked W. L. F. C. N. 3.

4" Mile

Thence North at 298 varas cross the South line of
section No 2, 45, at 498 varas pass a point 827 varas west
from the S.E. corner of said No 2, 45, at 1900 varas a stone
2" x 10" and 18" high marked W. L. F. C. N. 4.

5¹/₂ Mile
+

6¹/₂ Mile
+

7¹/₂ Mile
+

8¹/₂ Miles
+

9¹/₂ Miles
+

10¹/₂ Mile
+

1 Thence North at 336 varas pass a point 2.26
2 varas west from the N.W. corner of section No 2.46
3 at 1298 varas cross west line of section No 2.23. Block
4 $\frac{1}{4}$ at 1900 varas a stone 3" x 8" and 18" high marked
5 W. L. F. C. N. 5.

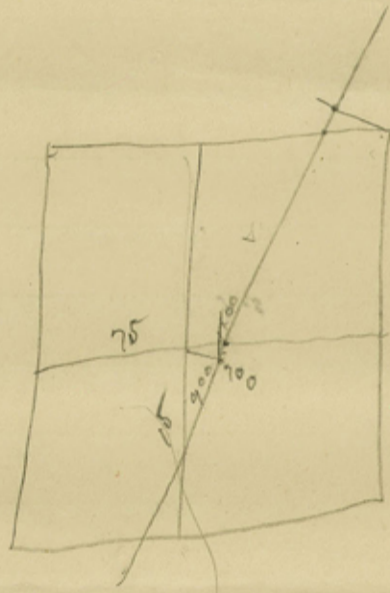
6 Thence North at 334 varas pass a point 2.50 varas
7 East from the N.W. corner of section No 2.23 at 397
8 varas cross N. line of said No 2.23, at 1500 varas cross
9 head of South prong of Buffalo Creek at 1900 varas
10 a stone 2" x 12" and 15" high marked W. L. F. C. N. 6

11 Thence North at 2.73 varas pass a point 7.26
12 varas East from the N.W. corner of Survey No 2.24
13 at 4.58 varas cross North line of said section
14 No 2.24 at 640 varas cross draw Course N. 75 E at
15 940 varas draw. (or 788) at 1900 varas a stone 1 1/2" x 10"
16 and 15 inches high from top marked W. L. F. C. N. 7

17 Thence North at 519 varas cross North line of Sec.
18 No 167 at 683 varas a point 637 varas west from
19 the N.E. corner of section No 167 at 1900 varas a stone
20 2 1/2" x 12" and 18" high marked W. L. F. C. N. 8.

21 Thence North at 580 varas cross the west line of Sec.
22 No 169 at ~~622~~ varas a point 161 varas west from the
23 N.W. corner of section No 169, at 648 varas cross the N.
24 line of said section No 169, at 1900 varas a stone
25 set in draw from which a Cottonwood bears S. 81 E. about
26 300 varas, stone is marked W. L. F. C. N. 9.

27 Thence North at 567 varas pass a point 3.15 varas
28 East from the N.W. corner of section No 136, at 647
29 varas cross north line of said No 136, at 1910
30 varas cross North prong of Buffalo Creek (or 758) at
31 1900 varas a stone 2" x 10" and 16" high marked
32 W. L. F. C. N. 10.



1 Thence North at 501 varas pass a point 791
2 varas East from the N.W. corner of section No 130
3 at 702 varas cross N. line of said section No 130
4 at 1560 varas cross head of draw (R 410) at 1900
5 varas a stone 3" x 10" and 30" high marked W.L.F.C.
6 N. 11.

11" Mile X

7 Thence North at 560 varas cross head of draw
8 (R 408) at 763 varas cross N. line of section No 104
9 at 910 varas pass a point 529 varas west from
10 the N.E. corner of said section No 104, at 1900 varas
11 a stone 12" x 24" on west slope of rocky point
12 marked W.L.F.C. N. 12.

12" Mile X

13 Thence North at 824 varas cross north line of survey
14 No 86 at 849 varas pass a point 96 varas west
15 from the N. corner of said section No 86, at 1043 varas
16 cross north line of section No 86, at 1165 varas cross
17 a branch (R 248) at 1900 varas a stone 2" x 12" and
18 2.40 high marked W.L.F.C. N. 13.

13" Mile X

19 Thence North at 110 varas cross branch (R 5-W)
20 at 180 varas recross same (R 108) at 320 varas cross
21 Clear forks of the Brazos River course (R 636) at
22 788 varas pass a point 380 varas East from
23 the N.W. corner of sec. No 67, at 885 varas cross N.
24 line of said section No 67, at 1900 varas a stone
25 3" x 6" and 2.2" high marked W.L.F.C. N. 14.

14" Mile X

26 Thence North at 970 varas cross the Snyder^{and}
27 Roby road at 1019 varas cross N. line of section
28 No 48 at 1070 varas cross a branch (R 408) at
29 727 varas pass a point 856 varas East from the
30 N.W. corner of said section No 48, at 1560 varas a
31 branch at 1900 varas a stone 2" x 8" and 18" high
32 marked W.L.F.C. N. 15.

15" Mile X

16" Mile

17" Mile

18" Mile

19" Mile

20" Mile

21" Mile

1 Prence North at 1007 varies cross north line of
 2 Section No 29 Block 3, at 1138 varies pass a point
 3 507 varies west from the N.E. corner of said section
 4 No 29 at 1900 varies a stone 4" x 7" and 18" high
 5 marked W.L.F.C. N. 16.

6 Prence North at 1077 varies a point 68 varies west
 7 from the N.W. corner of said section No 9 Block 3, at
 8 1068 varies cross N. line of said No 9, at 1900 varies
 9 a stone marked 6" x 12" and 30" high marked
 10 W.L.F.C. N. 17.

11 Prence North at 684 varies cross Spring Creek at
 12 1016 varies pass a point 443 varies East from the N.W.
 13 corner of section No 68 Block 2, N. & P. O. Ry & lands, at
 14 1129 varies cross N. line of said section No 68, at 1226
 15 varies cross road at 1900 varies a stone marked W.L.F.C.
 16 N. 18 set at foot of hill.

17 Prence North at 1040 varies cross draw (N 45 E) at
 18 1139 varies cross N. line of section No 69 Block 3, at
 19 955 varies pass a point 921 varies East from the N.E.
 20 corner of said section No 69, at 1900 varies a stone
 21 4" x 10" and 20" high marked W.L.F.C. N. 19

22 Prence North at 20 varies cross draw (S) at 871 varies
 23 cross west line of section No 101, at 11364 varies pass a
 24 point 442 varies west from N.W. corner of said section No
 25 101 at 1251 varies cross North line of said section No 101
 26 at 1900 varies a stone 7" x 12" and 15" high of marked
 27 W.L.F.C. N. 20,

28 Prence North at 400 varies S. edge of rough wash at 600
 29 varies East edge of same, (course N 80 W,) at 760 varies draw
 30 (W) at 970 varies draw (S 75 W) at 1303 varies pass a point 251
 31 varies East from N.W. sec, 136, at 1312 varies N. line of 136
 32 at 1900 varies a stone 3" x 10" and 30" high marked W.L.F.C. N. 21

22" Mile

23" Mile

24" Mile

25" Mile

26" Mile

1 Pence North at 1372 varas cross N. line of
2 of section No 159 Block 2. A. P. & D. La Rey & lands. at
3 1342 varas pass a point S 01 varas East from the
4 N.W. corner of said section No 159 at 1600 varas cross
5 a deep draw (N 45 E) at 1880 varas deep draw. (E) at
6 1900 varas a stone 1" x 2 1/2" and 2 1/4" high marked
7 W. L. F. C. N. 22. set on north bluff of deep draw.

8 Pence North at 1433 varas cross North line of sec.
9 No 212 at 1655 varas pass a point S 42 varas
10 west from the N.E. corner of said section No 212. at
11 1520 varas top of bluff on south bank of Rough
12 creek at 1590 varas cross Rough creek at 1900
13 varas a stone 2" x 6" and 18" high marked
14 W. L. F. C. N. 23.

15 Pence North at 1594 varas pass a point ~~300~~ varas
16 west from the N.W. corner of section No 210, at 1494 varas
17 cross N. line of section No 211, at 1900 varas a stone
18 in cedar brake 1" x 6" and 14" high, marked
19 W. L. F. C. N. 24. The above line crosses rough creek
20 at 205" varas. (N 75 W) at 600 varas recrosses same.
21 (N 75 E) at 700 varas deep draw. (E) at 1680 varas cross
22 deep draw. S 15 E. at 1820 varas over deep draw N. 61 E.

23 Pence North at 1535 varas pass a point 90 varas
24 East from N.W. corner of section 9 Block V at 1155
25 varas cross N. line of said section No 9. at 1900
26 varas a stone 3" x 15" and 15" high marked
27 W. L. F. C. N. 25.

28 Pence North at 701 varas cross the head of
29 a draw. (S 45 E) at 470 varas cross draw (S 60 E) at
30 1048 varas cross draw S 75 W, at 1343 varas cross road
31 S 75 W. at 1900 varas a stone 3" x 7" marked W. L. F. C.
32 N. 26.

27th Mile

28th Mile

29th Mile

30th Mile

1
2 ~~Thence North at 216 varas cross South line of section No 635~~
3 at 216 varas cross South line of section No 635
4 Block 97 H & T. Co. Ry & lands. at 1000 varas brakes of
5 Cottonwood Creek at 1635 varas cross Cottonwood Creek
6 (N 75 E) at 1900 varas a stone 5" x 10" and 15" high
7 marked W. L. F. C. N 27
8 Thence North at 18 varas cross draw (S 45 E) at 216
9 varas cross the South line of section No 636, Blk 97
10 889 varas west from the S.E. corner, at 415 varas
11 cross a deep draw (S 75 W) at 890 varas cross
12 draw (S. 60 E) at 1900 varas a stone 2" x 7" and 16" high
13 marked W. L. F. C. N. 28.
14 Thence North at 216 varas cross the South line
15 of section No 639 Block 97. at a point 884 varas
16 west from the S.E. corner of same. 740 varas cross
17 a draw (N. 20 E) at 1670 varas cross draw (N 30 E)
18 at 1900 varas a stone in South brakes of The Double
19 Mountain Park of the Brazos River, marked 3" x 6"
20 and 15" high marked W. L. F. C. N. 29.
21 Thence North at 216 varas cross South line of
22 section No 640 Block 97, at a point 909 varas west
23 from the S.E. corner of said section, at 580 varas
24 cross a deep Canyon (N 75 E) at 1560 varas a deep
25 draw (N 10 E) at 1900 varas a stone 4" x 5" and 20" high
26 60 varas South from main channel of the river,
27 marked W. L. F. C. N 30 N.W.C., from which a Cedar
28 8" bears S. 28 W 161,8 varas and a shelly limestone
29 mound (natural) about 20 feet in dia bears S. 29 1/2 W
30 162 to top of same.
31 Surveyed S. H. Lyone Chain
32 Sept 2nd to 6th 1857 S. V. Anderson Carriers



Field Notes of a Survey of
The North line of Fisher County

Beginning at a stone set for the north west corner
of Fisher County, which is 4" x 5" and 2.0" high. Marked
W. L. F. C. N. 30. N. V. C. From which a cedar 8" in dia bears
S. 28 W. 162, 8 varas, and mound of shelly limestone
(natural) bears S. 29 1/2 W. 162 varas to top of same.

Thence East at 934 varas cross East line of sec.
No 640 surveyed for the N. T. & C. Ry Co. at a point 216
varas south from the N.E. corner. at 1200 varas a stone
3" x 8" and 14" high marked N. L. F. C. E. 1.

Thence East at 260 varas west edge of channel of
Double Mountain Fork at 383 varas East edge of
same. course S 10 E, at 475 varas cross a creek (S. 60 W)
at 1181 varas pass a point 367 varas south from
the N. W. corner of section No 35 Block V, at 1206 varas
cross west line of said section No 35, at 1235 varas
cross a draw. S 15 E, at 1460 varas cross a draw, S 60 W,
at 1900 varas a stone 6" x 14" and 2.0" high marked
N. L. F. C. E. 2.

Thence East at 1000 varas a point 843 varas south
from the N. W. corner of sec No 46, at 1265 varas cross
west line of section No 36, at 1900 varas a stone
4" x 14" and 14" high set in rough cedar trunks.
marked N. L. F. C. E. 3.

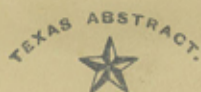
Thence East at 1326 varas west line of section No 37
at 1457 varas a point 520 varas north from S. W. corner
of same sec. at 1900 varas a stone 3" x 6" and 14" high
marked N. L. F. C. E. 4.

1" Mile

2" Mile

3" Mile

4" Mile



1
2
3
4
5
6
7
8
9
10
11
12
13
14
15
16
17
18
19
20
21
22
23
24
25
26
27
28
29
30
31
32

Thence East at 130 varas cross a road at 380
varas cross a deep draw (S. 30 E.) at 880 varas draw
(S. 10 E.) at 1210 varas a deep Cañon (S. 10 W.) at 1386 varas
west line of section 38, at 1396 varas a point 44
varas N. from S. W. corner of said section No 38, at 1566
varas cross S. line of 38, at 1660 varas cross a deep
Cañon, at 1703 a deep Cañon at 1900 varas a
Gypsum stone in deep Cañon, marked N. L. F. C. E. 5

5" Mile X

6" Mile X

7" Mile X

8" Mile X

9" Mile X

Thence East at 1800 varas a point 432 varas N.
from the N. W. corner of section No 30, at 1446 varas
cross west line of said section No 30, at 1900 varas
a stone 5" x 10" and 12" high marked N. L. F. C. E. 6.

Thence East at 260 varas cross a deep Cañon at
1274 varas pass a point 908 varas South from
the N. W. corner of section No 308, Block 2, H. & T. O. Ry.
lands, at 1584 varas cross west line of said sec
308, at 1900 varas, a stone 5" x 10" and 10" high
marked N. L. F. C. E. 7.

Thence East at 620 varas cross a deep Cañon (S)
at 780 varas Cañon (S. 60 E.) at 1200 varas draw, N. 30 E.
at 1565 varas west line of section No 309, at 1684 varas
pass a point 455 varas N. from S. W. corner of said
No 309, at 1900 varas a stone 2 x 12" and 15"
high marked N. L. F. C. E. 8.

Thence East at 360 varas cross a draw (N. 20 W.) at
1540 varas cross draw (S. 20 E.) at 1566 varas cross
S. line of section 309, at 1689 varas pass a point
21 varas south from the N. W. corner of section No 305,
at 1624 varas cross west line of said section No 305,
at 1770 varas cross draw (S) at 1900 varas a stone
2 x 10" and 16" high marked N. L. F. C. E. 9.



10" Mile

7 1/2" Mile

1 1/2" Mile

7 1/3" Mile

7 1/4" Mile

7 1/5" Mile

1
2
3
4
5
6
7
8
9
10
11
12
13
14
15
16
17
18
19
20
21
22
23
24
25
26
27
28
29
30
31
32

Thence East at 400 varas cross a creek. (N) at
1558 varas a point 497 varas S. from the N.W. corner
of section No 304, at 1684 varas pass west line of section
304, at 1900 varas a stone 2" x 10" and 14" high
marked N.L.F.C.E. 10.

Thence East at 1489 varas pass a point 973 varas
S. from the N.W. corner of section No 303, at 1700
varas cross west line of section No 303, at 1900
varas a stone 4" x 4" and 18" high marked
N.L.F.C.E. 11

Thence East at 400 varas cross Double Mountain
Fork of the Brazos (N. 400) at 485 varas cross draw
(S 20 W) at 700 varas East bluff of river at 1489 1761
varas cross west line of section No 302, at 1862 varas
pass a point 390 varas N from the S.W. corner of
said section No 302, at 1900 varas a stone 6" x 8"
and 14" high marked N.L.F.C.E. 12.

Thence East at 1882 varas cross west line of section
No 296. Passing a point at 1861 varas which is
86 varas S. from the N.E. corner of said section No
296, at 1900 varas a stone 2" x 10" and 15" high
marked N.L.F.C.E. 13.

Thence East at 1800 varas pass a point 562 varas
South from the N.W. corner of section No 298, at
1900 varas a stone 2" x 10" and 16" high from which
marked N.L.F.C.E. 14.

Thence East at 42 varas cross west line of section
No 248. at 1020 varas cross draw (N 30 E) at 1120 varas
cross draw (N) at 1485 varas a draw S 75 W, at
1900 varas a stone 2" x 12" and 20" high marked
N.L.F.C.E. 15.

1 Thence East at 560 varas cross a road (S 75 W) at
2 at 106 varas cross west line of section No 298 at
3 309 varas a point 811 varas North from the S. W. corner
4 of section No 298, at 960 varas a draw. (N 10 E) at 1900
5 varas a stone 2" x 5" and 10" high marked N. L. F. C. E. 16

16" Mile X

6 Thence East at 163 varas cross west line of section
7 No 299 at 248 varas a point 325 varas North from
8 S. W. corner of said sec, 299, at 1080 varas cross
9 draw. (N 20 E) at 1890 varas cross deep branch. (N 40 E)
10 at 1900 varas a stone marked N. L. F. C. E. 17.

17" Mile X

11 Thence East at 187 varas pass a point 150 varas
12 south from the N. W. corner of section 125 at 1900
13 varas a stone 3" x 12" and 17" high marked N. L. F.
14 C. N. 18.

18" Mile X

15 Thence East at 124 varas a point 627 varas south
16 from the N. W. corner of section No 126, at 286 varas cross
17 west line of said sec, 126 at 4040 varas cross head of a
18 draw. (S 60 E) at 1340 varas a draw. (N 45 E) at 1862 varas
19 a draw. (S 30 E) at 1900 varas a stone 3" x 8" and 18"
20 high marked N. L. F. C. E. 19.

49" Mile X

21 Thence East at 350 varas west line of section No 1
22 at 540 varas a point 736 varas N. from the S. W. corner
23 of said section No 1, at 1220 varas cross Cypress Creek
24 (N. 10 E) at 1900 varas a stone 2" x 10" and 18" high
25 marked N. L. F. C. E. 20.

20" Mile X

26 Thence East at 408 varas cross the west line of
27 section No 2. at 414 varas pass a point 260 varas
28 North from the S. W. corner at 1900 varas a stone
29 2" x 8" and 19" high marked N. L. F. C. E. 21.
30
31
32

27" Mile X



2.2" Mile

Thence East at 478 varas pass a point 216 varas South from the N.W. corner of 118, at 532 varas cross the west line of said section No 118, at 1110 varas cross draw (N 35 W) at 1160 varas across same draw, at 1210 cross same, at 1900 varas a stone 2" x 4" and 11" high marked N.L.F.C.E. 22.

2.3" Mile

Thence East at 471 varas pass a point 692 varas South from the N.W. corner of section No 117, at 542 varas cross west line of said section No 117, at 810 varas cross draw, at 1900 varas a stone 4" x 4" and 18" high marked N.L.F.C.E. 23.

2.4" Mile

Thence East at 606 varas pass a point on west line of section No 197 at 781 varas pass a point 667 varas North from the S.W. corner of section No 197, at 1900 varas a stone 2" x 8" and 18" high and marked N.L.F.C.E. 24.

2.5" Mile

Thence East at 670 varas Abilene road and E line of section No 197 at 720 varas pass a point 191 varas North from the N.E. corner of section No 198, at 1900 varas a stone 3" x 10" and 12" high and marked N.L.F.C.E. 25.

2.6" Mile

Thence East at 1680 varas cross the west line of league No 348 in name of Austin and Williams at a point 647 varas North from its S.W. corner, at 1900 varas a stone 3" x " and 18" high marked N.L.F.C.E. 26.

2.7" Mile

Thence East at 206 varas cross draw (N) at 1900 varas a stone 2 1/2" x 6" and 16" high marked N.L.F.C.E. 27.

28" Mile
29" Mile
30" Mile

Thence East at 373 varas cross the South line of League No 348. in Name of Austin and Williams at 1900 varas a stone 2 1/2" x 11" and 26" high marked N.L.F.C. E 28

Thence East at 400 varas cross a draw (or) at 1900 varas a stone 2" x 8" and 18" high marked N.L.F.C. E 29,

Thence East at 500 varas cross a draw (or) at 1900 varas. The N.W. corner of Jones County and the N.E. corner of Fishes County a stone 2" x 14" and 2 feet high marked N.L.F.C. E 30, N.E.C. F.C. and on other side N.W.L.T.C. N. 30, N.W.V.C. J.C.

Surveyed S. H. Lyon Chain
Sept 6" to 14" 1887, S. B. Anderson Carriers

The State of Texas
County of Fishes

J. P. Bagley Surveyor

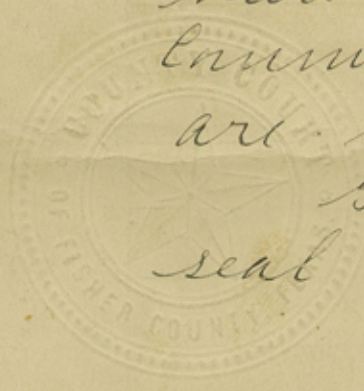
Appointed by the Commissioners Court of Fishes County to Survey and mark the boundary lines of said Fishes County do hereby certify that the foregoing notes of the West and North lines are true and correct and that all marks and boundaries are as described, both Natural and Artificial

Roby Texas Sept 19" 1887

J. P. Bagley
Surveyor

The State of Texas }
County of Fisher } J. W. S. Rector Clerk of the County
Court of Fisher County do hereby Certify
that the foregoing field notes of the West
and North lines of Fisher County have
been examined and approved by the
Commissioners Court of said County and
are now on Record in this office
Given under my hand and
seal of office this 30 day September 1887

W. S. Rector Clerk
County Court Fisher County
Texas



Fisher Co Bdry Line 3