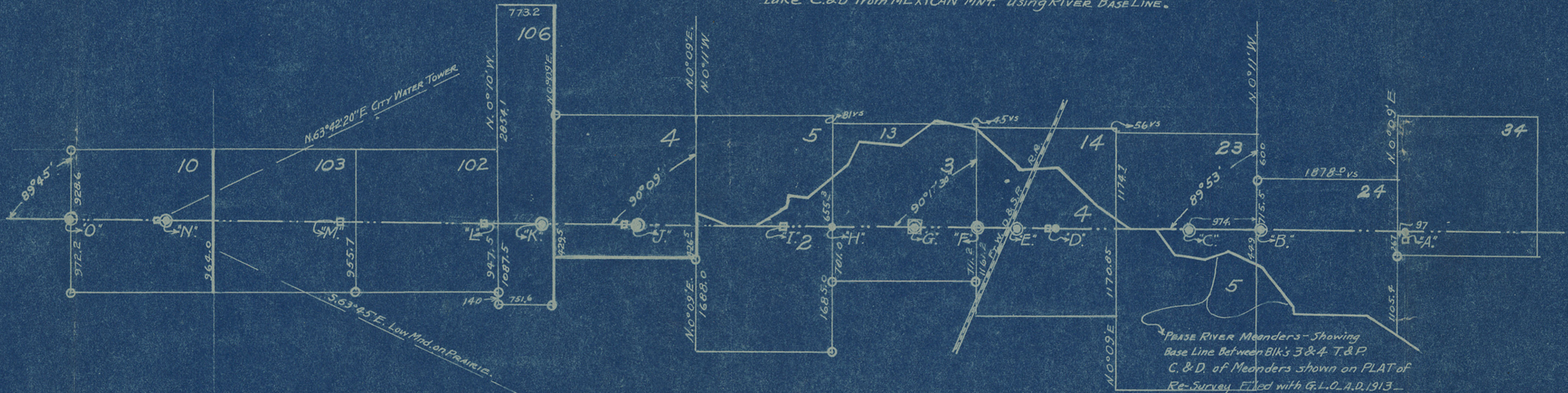


INDEX TO COUNTY LINE MARKERS

SEE LEGEND IN SE. CORNER OF THIS PLAT

- "A" • = 5' section of 2" pipe mkd. B. Faced Stone 4' high Mkd. N.W. on SE. M.C.
Quadrant bears S. 85 varas Quitaque Pk. brs. S. 1°26'E.
Small Knoll on Cap brs. S. 30°44'W. to Center (30°42' to E. edge)
Quitaque Water Tower brs. N. 9°50'W.
- "B" • = 32' E. of Cen. of Lane and 2' E. of Fence.
- "C" • = 974 vs. W. of Sec. Line. At point described by Crews as "at 1049".
- "D" • = 1/4" pipe mkd. B. on N. face - F. on S. on N. pt. of Ridge and 74 3/4 vs. E. of point described by Crews notes for B. Mi. 8.
- "E" • = At fence on E. side of Railway Right-of-Way.
- "F" • = In Section Line at fence and 4 vs. S. of Fence Corner at Cattle Guard.
- "G" • = In Fence line and by old large Stone mkd. B. F. at point described by Surveyor Crews for B. Mi. 9.
- "H" • = 6' Section 2" pipe mkd. B. on N. face, 10n S. in Sec. Line and at Co. L. N. edge of cultivated land.
- "I" • = Stone mkd. and located as described by Crews for B. Mi. 10.
- "J" • = Stone mkd. and located as described by Crews for B. Mi. 11 and @ is on high point in open 233 vs. E. of same.
- "K" • = On high point in open 16 vs. W. of fence and 243 vs. W. of Section line and about 143 vs. N. of Taylor's barn. Windmill on Cap. brs. S. 83°25'W.
- "L" • = Found Stone located as described by Crews for B. Mi. 12.
- "M" • = Found Stone mkd. and located as described by Crews for B. Mi. 13.
- "N" • = Found Stone pile located as described by Crews for point on Plains at Floyd Co. Mi. 9 + 1538. • placed to E. not disturbing the pile of stone. Bearings from pile of stone - Wallace windmill brs. S. 42°08'30" W.
- "O" • = In Section line at fence and 21 1/2 vs. N. of bolt for middle of W. line SEC. N° 10.



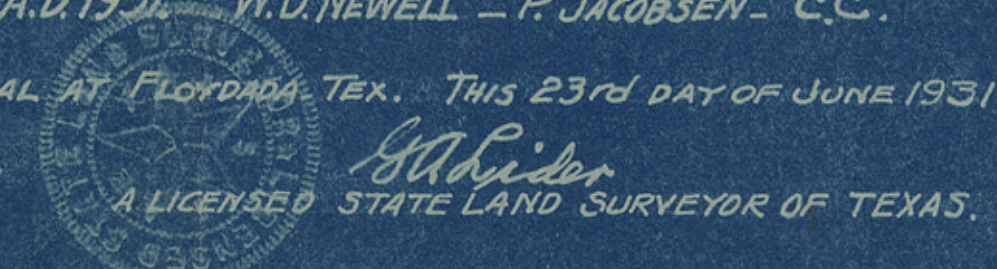
SECTIONS 5 to 20 Blk. 3 T. & P. inclusive, by agreed Judgement - FEDERAL COURT, Fall Term 1916 - AMARILLO - take C. & D. from MEXICAN MNT. using RIVER BASE LINE.

PEASE RIVER Meanders - Showing Base Line Between Blks 3 & 4. T. & P. C. & D. of Meanders shown on PLAT of Re-Survey Filed with G.L.O. A.D. 1913 - 20 vs. Allowed for Channel between Blks.

T.L. CREWS as Special Surveyor filed Report with G.L.O. also Floyd County in Aug-1892. defining the BRISCOE - FLOYD COUNTY LINE.

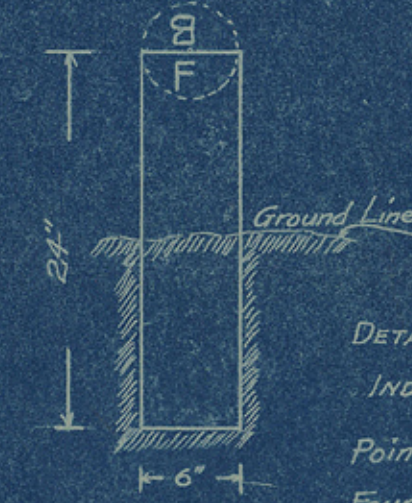
THIS PLAT AND FIELD WORK INDICATED - BY G. ALIDER
L.S.L.S. OF TEXAS - FOR BRISCOE COUNTY AND FURNISHED
THE GEN'L LAND OFFICE FOR CORRECTION OF STATE ABSTRACTS
AS AFFECTING THESE SECTIONS.

SURVEYED IN JUNE A.D. 1931 - W.D. NEWELL - P. JACOBSEN - C.C.
WITNESS MY HAND & SEAL AT FLOYDADA, TEX. THIS 23rd DAY OF JUNE 1931.



DISTRIBUTION OF COUNTY LINE SECTION ACREAGE.

Block	SECT.	BRISCOE		FLOYD		MOTLEY	
		Acreage	As Corrected	Acreage	As Corrected	Acreage	As Corrected
3 T & P	4	496.0	640.0	144.0	640.0		
3 T & P	34	551.0	640.0	4.5	640.0	84.5	
3 T & P	24	239.0	599.0	360.0	599.0		
3 T & P	23	441.0	514.4	73.4	514.4		
4 T & P	2	61.0	640.0	579.0	640.0		
4 T & P	3	402.0	640.0	238.0	640.0		
4 T & P	4	247.4	640.0	392.6	640.0		
4 T & P	5	4.5	640.0	634.5	640.0		
G & M	106	387.5	532.3	145.0	532.3		
G & M	102		640.0	320.0	640.0		
G & M	103	317.0	640.0	323.0	640.0		
B-5	10	314.0	640.0	326.0	640.0		



LEGEND

- DETAIL of 6"x24" Cylinder CONCRETE MARKER. INDICATED ON PLAT THUS •
- Points described in Crews notes of N. line FLOYD Co. Found, as indicated on PLAT THUS □
- Pipe & Brick Section Corners Found and used where indicated on PLAT THUS ○
- Marked Pipes in County Line THUS ●

W. Floyd Co Bdry Line

Plat of a part
of the County line
between BRISCOE
and FLOYD Counties.

Filed July 3rd 1931
for purpose of Correcting
Abstracts of Surveys shown
thereon -
J. H. Walker, Comm.
Clark

(See letter of Hon O. R. Tipps, C.)
Judge dated 6/24/31 - herewith

Abstracted 7-24-1931
R. B. Newcome

11

County 53497