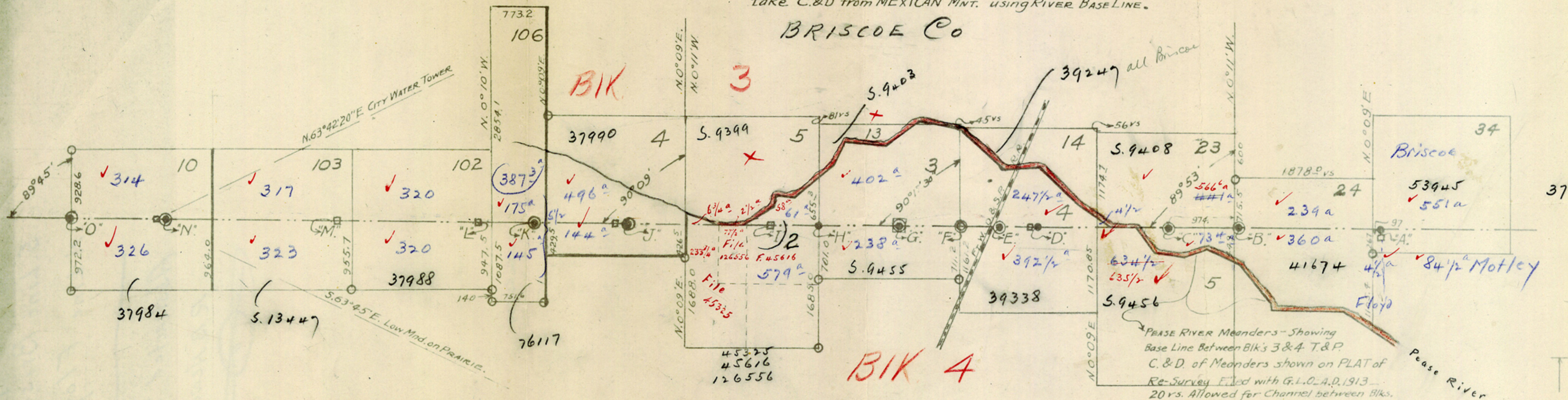


S. Line Briscoe

SECTIONS 5 to 28 Blk. 3 T. & P. inclusive, by agreed
Judgement - FEDERAL COURT, Fall Term 1916 - AMARILLO -
take C. & D from MEXICAN MNT. using RIVER BASELINE.

BRISCOE Co



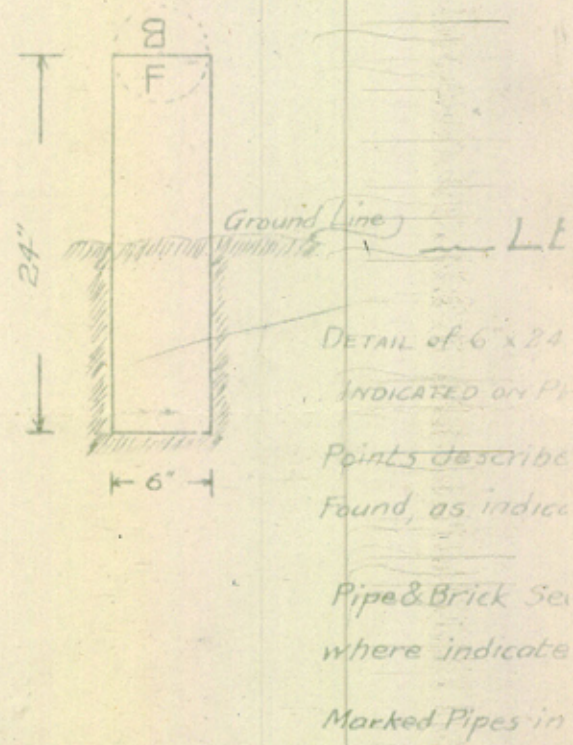
DISTRIBUTION OF COUNTY LINE SECTION ACREAGE.

Block	SECT.	BRISCOE Acreage	FLOYD Acreage	MOTLEY Acreage	Acreage of SEC. As Corrected -
3 T&P	4	496.0	144.0		640.0
3 T&P	34	551.0	4.5	84.5	640.0
3 T&P	24	239.0	360.0		599.0
3 T&P	23	441.0	73.4		514.4
4 T&P	2	61.0	579.0		640.0
4 T&P	3	402.0	238.0		640.0
4 T&P	4	247.4	392.6		640.0
4 T&P	5	4.5	634.5		640.0
G&M	106	387.3	145.0		532.3
G&M	102	320.0	320.0		640.0
G&M	103	317.0	323.0		640.0
B-5	10	314.0	326.0		640.0

FIELD WORK INDICATED BY G. ALIDER
FOR BRISCOE COUNTY AND FURNISHED
OFFICE FOR CORRECTION OF STATE ABSTRACTS
THESE SECTIONS.

DATE A.D. 1931 - W.D. NEWELL - P. JACOBSEN - C.C.
DEAL AT FLOYDADA, TEX. THIS 23RD DAY OF JUNE 1931.

G. Alider
A LICENSED STATE LAND SURVEYOR OF TEXAS.



XX/ Floyd Co. 8 Bdry Line 7

Part of

S. Line Briscoe ✓

N. Line Floyd-

Abstracted 7-24-31

R. B. Newcome



Counted 53499