

**We-D.L. REAVIS.**

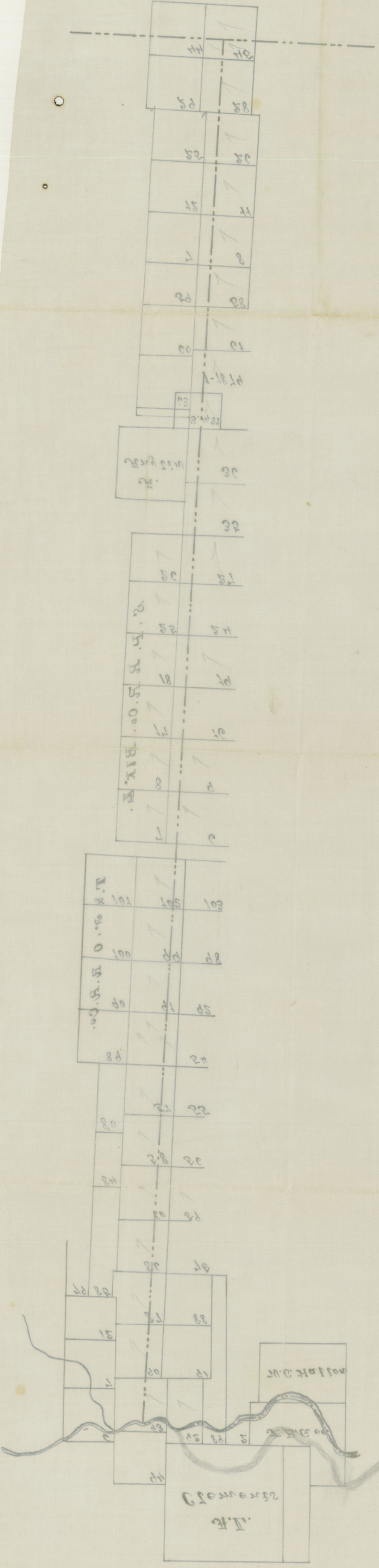
**& A. A. JEFF Do hereby**  
 certify that the foregoing Plat  
 is true & correct according to the  
 work done on the ground on the  
 12, 13, & 14 days of Jan. 1893.

**D.L. Reavis**

**A. A. JEFF.**

Board & Collier 64  
 Filed June 10/93

County 52515



W. W. WELFE,  
 D. T. BEAVER,  
 of the 13th day of June 1893.  
 Work done on the ground on the  
 12th day recorded according to the  
 certificate filed herein. Witness  
 my hand and seal this 13th day of June  
 1893.  
 W. W. WELFE, D. T. BEAVER.  
 Me-T. T. BEAVER.