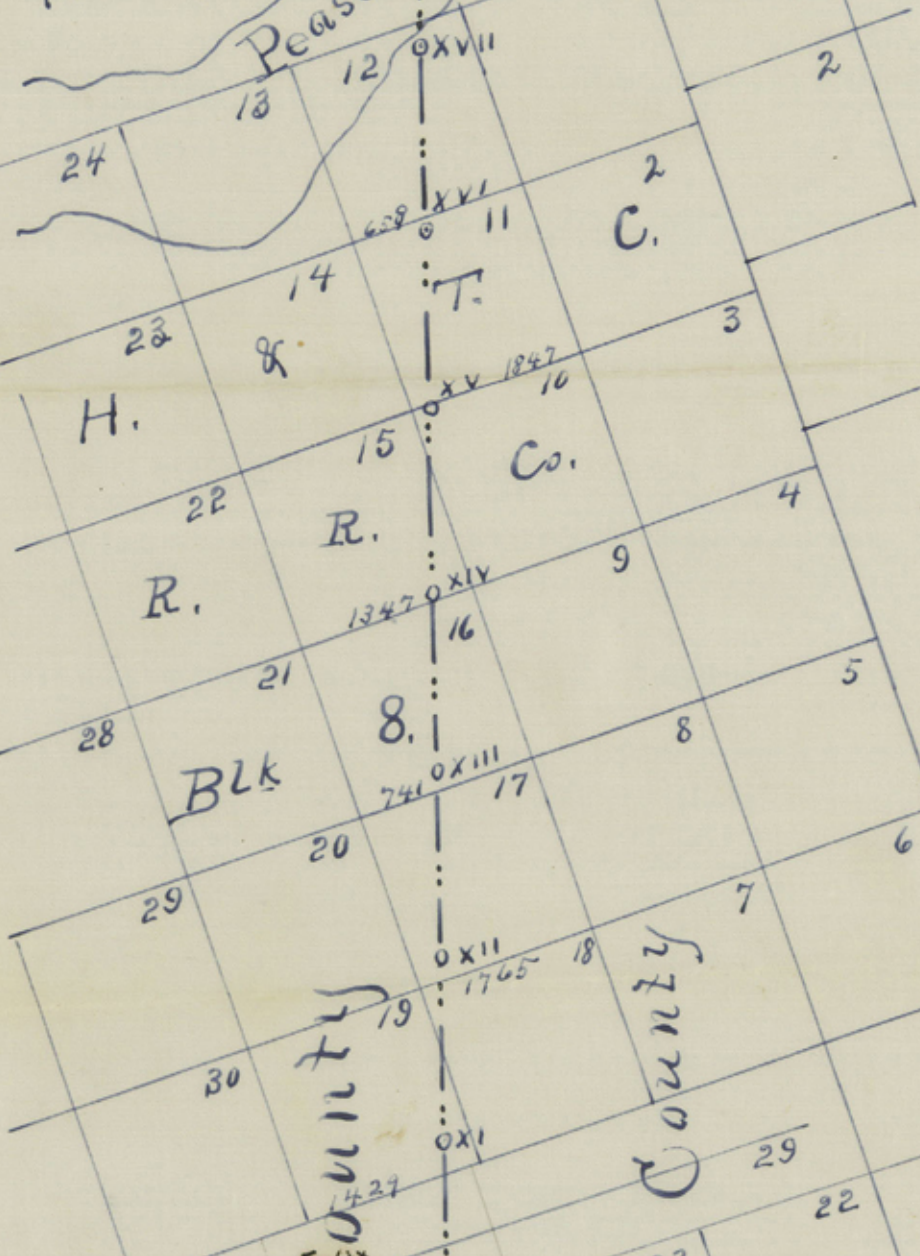


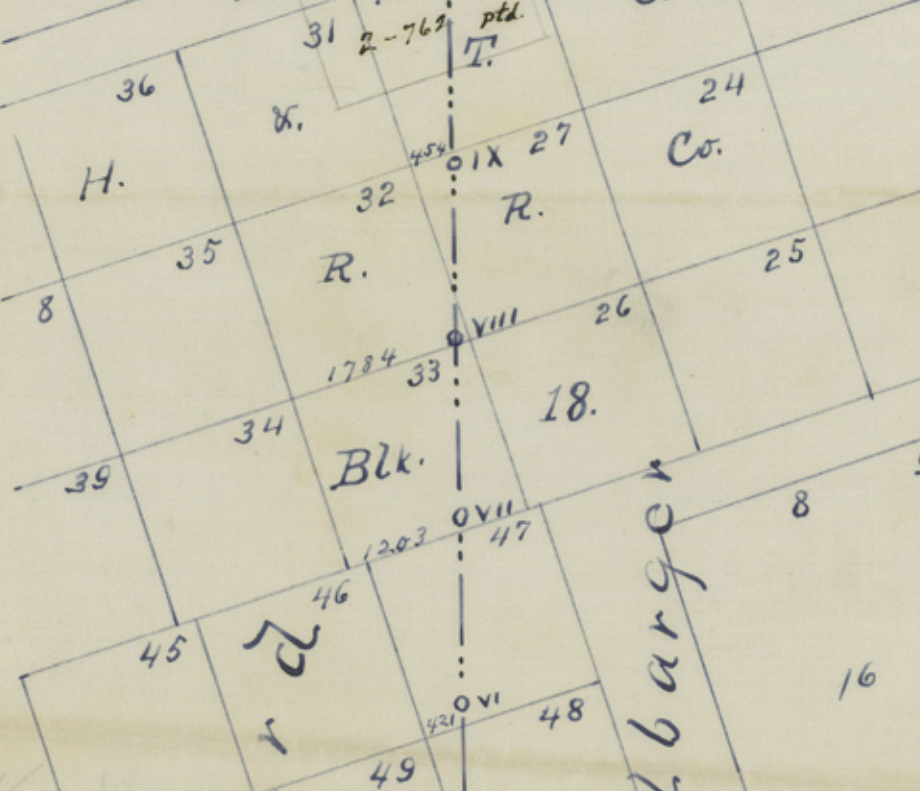
Hardeman Co.

Pease River

J.E. Cor
Ford Co.



Felix
Houston



S.W. Cor Wilbarger Co.

Baylor Co.

Handwritten notes on the left margin.

Handwritten notes on the right margin.

3/ Foard Co. Bdry Line



Counter 53517

12522 1/2 1/2 1/2

69

1 Report of a Survey of the County Line bet-
2 ween Milbarger and Ford Counties made by
3 order of the Commissioners Court of Milbarger
4 County at its special term July 7th 1893.

5 Begin at the established N.W. Corner of Baylor
6 County a Large Sand Stone Rock 3 feet x 3 feet
7 facing North and South and situated in the Valley
8 of South Beaver Creek marked K $\frac{3}{4}$ on E. B, N, W, on
9 the South side and $\frac{1}{3}$ W on the North side a
10 Large Hackberry tree Brs. N $25\frac{3}{4}$ E. 128 Vrs.
11 and another Brs. N $21\frac{1}{2}$ E 131 Vrs. and a Round
12 Lone Mound Brs. S $57\frac{3}{4}$ W, 212 Vrs. all of the above
13 Bearings are found at the Course and distance
14 called for but the trees are not marked. Thence North
15 at 375 Vrs. the South Bank of Beaver Creek at 1281
16 Vrs. cross. the South Line of Sec 64 Blk, 18, N, T, T, C,
17 R, R, Co 583, Vrs. from its S.E. Corner at 1900 $\frac{8}{10}$ Vrs.
18 a Sand Stone marked 1, W, on the E, side and F
19 on the west side

1 Thence North at 1367 Vrs. cross? Line of No 59
21 Blk 18- 2 Vrs. from its S.E. Corner at 1900 $\frac{8}{10}$ Vrs.
22 a Red Sand Stone marked 2 W on the E, side and F
23 on the West side

2 Thence North at 1453 Vrs. cross. the South Line of
25 Sec 55, 379 Vrs. from its SW corner at 1900 Vrs. a
26 Red Sand Stone marked 3 W on the E, side and F on
27 the West side

3 Thence North at 1539 Vrs. cross. the S, Line of Sec
29 54 Blk, 18- 740 Vrs. from its S.E. Cor at 1900 $\frac{8}{10}$
30 Vrs. a Red Sand Stone marked, 4, W, on the, E, side
31 and F on the West side

4 Thence North at 1425 Vrs. cross. the S, Line of Sec
33 49 Blk, 18, 159 Vrs. from its S.E. Corner at 1900 $\frac{8}{10}$
34 Vrs. a Red Sand Stone marked 5 W on the E, side

- 1 and ∇ on West Side
- 5-2 Thence North at 1711 Vrs Cross the S' Line of Sec
 3 47 Blk 18-421 Vrs. from its SW corner at 1900³/₁₀
 4 Vrs. a Red Sand Stone marked 6, W, on the E, side
 6 and ∇ on the West Side
- 6 Thence North at 1797 Vrs. Cross. the North Line of
 7 Sec 47- Blk, 18. at 1003. Vrs. from its, N, W, corner
 8 at 1900³/₁₀ Vrs a Red Sand Stone marked 7 W on the
 9 E. side and ∇ on the West Side.
- 7 Thence North at 1883. Vrs. Cross. the South Line of
 10 Sec 32 Blk, 18, 116. Vrs from its S, E, corner at 1900³/₁₀
 11 Vrs. a Red Sand Stone marked 8, W on the E Side
 12 and ∇ on the West
- 8 Thence North at 1900³/₁₀ Vrs. a Red Sand Stone
 14 marked 9, W, on the E, side and ∇ on the West Side
- 9 Thence North at 68 Vrs. cross the S. Line of Sec 28
 16 Blk 18- 454 Vrs. from its S, W, corner at 1900³/₁₀
 17 Vrs a Red Sand Stone marked 10, W, on the E. side
 18 and ∇ on the West Side.
- 10 Thence North at 154 Vrs. Cross the North Line of
 20 28- Blk - 18- 1035- Vrs. from its N, W, corner at 1900³/₁₀
 21 Vrs. a Red Sand Stone marked 11, W, on the E, side
 22 and ∇ on the West Side.
- 11 Thence North at 1604 Vrs. Cross the S. Line of Sec
 24 17 Blk, 8, 135- Vrs. from its S W cor at 1900³/₁₀ Vrs.
 25 a Red Sand Stone marked 12, W, on the E, side and
 26 ∇ on the West Side
- 12 Thence North at 1698 Vrs. Cross the S Line of Sec
 28 16 Blk 8' ∇ & ∇ C R R @ 741 Vrs. from its S, W, corner
 29 at 1900³/₁₀ Vrs. a Red Sand Stone marked 13, W, on
 30 the E. side and ∇ on the West Side
- 13 Thence North at 1792 Vrs. Cross the, S, Line of Sec
 32 15- Blk, 8, 1347 Vrs. from S, W, corner at 1900³/₁₀
 33 Vrs a Red Sand Stone marked 14, W, on the E,
 34

1 Side and ∇ on the West Side

14 2 Thence North at 1886 Vrs. Cross the South Line of
3 No 11 Blk. - 8 - 5 - 3. Vrs. from its S. W. Corner at 1900 $\frac{3}{10}$
4 Vrs. a Red Sand Stone Marked 15. W. on the E. Side
5 and ∇ on the West

15 6 Thence North at 1900 $\frac{3}{10}$ Vrs. a Red Sand Stone
7 Marked 16. W. on E. Side and ∇ on the West Side

16 8 Thence North at 80 Vrs. Cross the North Line of Sec
9 11 Blk. 8. - 65 - 9 Vrs. from its N. W. Corner at 1900 $\frac{3}{10}$
10 Vrs a Red Sand Stone 3 feet High Marked 17. W.
11 on the E. Side and ∇ on West Side. This Stone is
12 on the East Side of a Sandy high Bluff on the South
13 Bank of Pease River from which a Chidium Brs.
14 S $49\frac{3}{4}$ E. 25 Vrs. and 2 Chidiums 5" Diam Brs. N.
15 $54\frac{1}{2}$ W $12\frac{1}{2}$ Vrs. from the two Chidium trees the end
16 of a Red Ridge Brs. N. $73\frac{1}{2}$ W

17 17 Thence North at 40 Vrs. the South Bank of the River
18 on a high Bluff at 1131 Vrs. a point in the middle
19 of Pease River. The N. E. Corner of Fears County in
20 the West Line of Milbarger Corner. from which a
21 Cotton Wood Marked X. on the North Side Brs. N 54
22 38 W. 360 Vrs. and a forked Cotton wood Both
23 forego. marked on the North Bears N 31 58 W.
24 408 Vrs. Surveyed Aug 31" & Sept 1" 1893. Run
25 made on true Meridian the average magnetic V. A
26 $10^{\circ} 10'$ E. We R M Kenney and D L Reavis
27 Surveyors duly appointed by Commissioners Courts
28 of Milbarger and Fears Counties do hereby certify
29 that the foregoing Survey was made in the field
30 according to Law and that the Lines monuments
31 and distances with marks natural and artificial
32 are truly described with foregoing Plat and
33 Field Notes, Oct 17" 1893. (R M Kenney) Chain
34 R M Kenney Surveyor for Milbarger County }
D L Reavis Surveyor for Fears County } G D Douglas) Men

1 The State of Texas } I G W Thompson Clerk
 2 County of Foard } County Court in and for
 3 Foard County Texas do hereby certify that the
 4 foregoing is a true and correct copy of Field
 5 notes and Plat now on file in this office and
 6 Received in Volume 1 on Pages no 240 & 241
 7 Minutes of the Commissioners Court of Foard
 8 County Texas, Given under my hand and
 9 Seal of office at Crowell Texas this 18th day of
 10 November A.D. 1893.

11 G W Thompson Clerk
 12 County Foard County - Texas

13
14
15
16
17
18
19
20
21
22
23
24
25
26
27
28
29
30
31
32
33
34
 Copy

35
36
37
38
39
40
41
42
43
44
45
46
47
48
49
50
51
52
53
54
55
56
57
58
59
60
61
62
63
64
65
66
67
68
69
70
71
72
73
74
75
76
77
78
79
80
81
82
83
84
85
86
87
88
89
90
91
92
93
94
95
96
97
98
99
100
 Examined approved and
 applied
 Nov 23/93 G. W. Beaumont
 Filed Nov 23rd/93
 Board County
 East Boundary.