

N^o. 31

X

Field Notes of Co Line
Pria County

Filed March 6th 1882

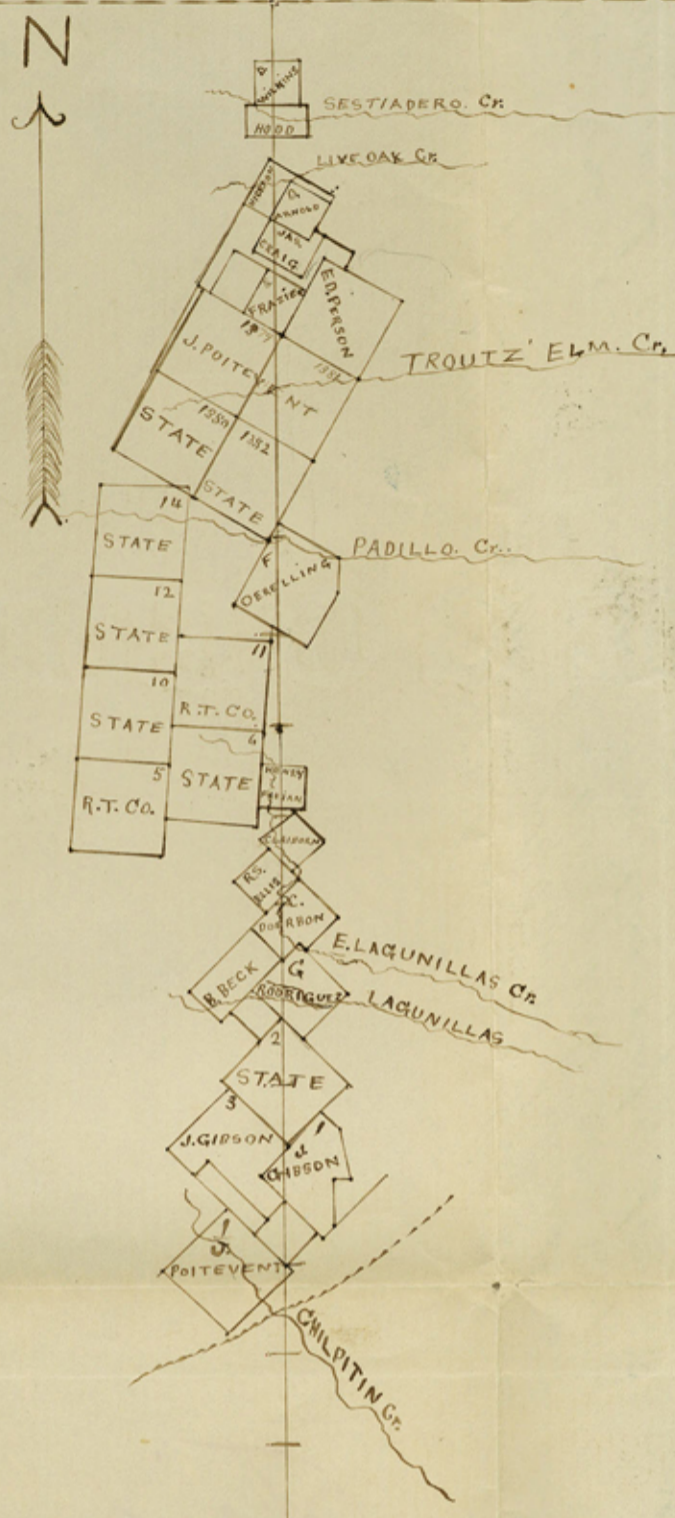
signed by Surveyor of Pria but
run conjointly with Surveyor of
Atascosa Co

for West line see Zavalla



FRIO COUNTY

ATASCOSA COUNTY



SCALE 4000 PER. IN.
VARIATION. 9° 45' E.

S.

4

~~20~~

20

Jos Co. Bldg. A 2a

20 W. D. my

[Handwritten signature]

Jos Co. Bldg.

Counter 53612

The State of Texas, Jno A Pranglin Clerk
 County of Frio, do hereby certify that the map
 or plat on the reverse hereof is a true copy from
 the records of the Commissioners Court of Frio County
 of a plat of the boundary line between Frio and
 Atascosa Counties Texas, and surveys adjacent to
 and upon said line returned by W. W. Haynes
 Surveyor of Frio County August term 1881 of
 said Commissioners Court and entered of record to-
 gether with Report + field notes accompanying the
 same

Given under my hand + seal of
 Office Feby 28th 1882

Jno A Pranglin
 CLK Co Court Frio Co TEX

Counter 53611

20

Counter 53612

~~29~~
This Co. Bdy. 2a

W. W. Haynes
This Co. Bdy.

The State of Texas, I Jno A Pranglin Clerk
County of Frio of the County Court of Frio County
do hereby certify that the map
or plat on the reverse hereof is a true copy from
the records of the Commissioners Court of Frio County
of a plat of the boundary line between Frio and
Atascosa Counties Texas, and surveys adjacent to
and upon said line returned by W. W. Haynes
Surveyor of Frio County August term 1881 of
said Commissioners Court and entered of record to-
gether with Report + field notes accompanying the
same

Given under my hand + seal of
Office Feby 28th 1882
Jno A Pranglin
Clerk of Court Frio Co TEX

Counter 53611

53

The State of Texas, In Commissioners Court
County of Frio, of Frio County, August-term 1881

W. W. Haynes Surveyor of Frio County in ac-
cordance with an order of the Commission-
ers Court of Frio County made and
entered on the 28th day of May A. D. 1881
did in obedience to said order proceed to
act in conjunction with the Surveyor of
Atascosa County on the 13th day of June
1881 in marking out and establishing
the boundary line between the Counties
of Frio and Atascosa and of his action
as aforesaid in the premises Reports as
follows that commencing at a post
set for the S. E. cor. of Medina County
and the N. E. cor. of Frio County
mkd on S. W. side F. and on N. W.
side n. on the E. side • from which
a blackjack 8 in dia brs N. 60° W. 9³/₄
vs mkd C. Blackjack 14 in dia brs
S. 27³/₄ West 19 vs mkd F. do 10 in
dia brs S. 31° E. 16 vs mkd A. Thence
S. 1187 vs intersects N. line of St.
Wilkins pre. Survey at 403 vs E. from
his N. W. cor at one mile 260 vs
Astraders Creek 1 mile 1434 vs
intersects N. E. line of Sur. N^o
at a hundred & Seventy varas S.
60^o E. from its N. W. cor 1 mile 1780
varas Past Lak Creek at two miles
1440 vs. Live Oak Creek at 4 miles

430 vs. Trout Elm 5 miles 1438 vs N. W.
co. Culling Sur. N^o 1336 vs E. 2 1/2 varas
6 miles S. E. co of State section N^o 1382
vs N. 61^o W. 22 1/2 vs. at 6 miles and 20
varas E. prong Lagunillas Creek 9 miles
1505 vs. across same Creek 9 miles
1690^{vs} intersect - N. W. line has Lobson
Sur. N^o 114, 530 vs S. 45^o W. from its N.
co. 9 miles 1765 - across E. prong
Lagunillas 10 miles 20 vs across
same prong 10 miles 615 vs across same
prong 10 miles 1885 - varas Slough 11
miles 700 vs Lagunillas Creek at 14
miles 200 vs E. co of J. Poitevent Sur
N^o 1 vs N. 31 1/2 E. 77 vs. 14 miles and
1000 vs. Phasantun and Friston
road at 14 miles 1295 vs. Chilputin^{Creek}
at 23 miles and 840 vs a small
Line Oak Creek 20 miles 700 vs
bed of San Miguel Creek 65 vs in
width 80 miles a post set for the S. E.
co. of this County and S. W. of Atascosa
Mkd xxx on N. side A on E. side
and F on the W. side and C. O. R. on
S. side from which a Coma Mott vs N.
17 1/2^o E. 248 vs. And I further state that
a post was set at the end of each mile
marked with the letter F. on the West
side and the letter A on the East side
Also marked on the North side to
correspond with the number of the

mile for which the post was set;
beginning at the post set for the N. E.
corner of Frio County & S. E. corner of
Medina County and terminating at
the post set for the S. E. corner of Frio
County & S. W. corner of Alameda County
Chain Meas. Henry Martin & James
Shaney. J. W. W. Haynes County
Surveyor of Frio County do hereby
certify that the above survey was made
in the field according to Law and
that the marks both natural and
artificial are truly described in the
foregoing field notes. Given under
my hand at Office this August 8th
A. D. 1881

J. W. W. Haynes
Co Sur. Frio Co.

The State of Texas,
County of Frio, I Jno A Pranglin
Clerk County Court of Frio County do hereby
certify that the above and foregoing Report
and copy of field Notes is a true copy
of the Report and field notes filed and
entered of record in Commissioners Court
of Frio County August Term A. D. 1881
Given under my hand and seal
of Office Feby 28th A. D. 1882
Jno A Pranglin
Clerk Co Court Frio Co Tex

13

Frio Co Bdry Line 31

Frio Co.

Frio & Alamosa

Field notes of Countyline

Filed March 6th 82.

W. H. Hask
Comm

Signed by Surveyor of Frio
Co. but run conjointly with
Surveyor Alamosa Co.

