

316

is Co. Eddy

(2)

~~3~~

Retrace of Portion  
of  
Fris - Atascosa Co. Line  
by

Will Hickey, Co. Sur. Fris Co.

1934

Contents.

- 1. Field notes - filed 6-19-34
  - 2. Sketches - filed 9-12-34
- Blucher

4 5/1

Pearson Tex  
Sept. 10, 1934.

1300

Mr. J. H. Walker:  
Gen. Land office  
Austin Tex.

Dear Mr. Walker: I am sending you  
a sketch of the fifteen miles of "Co" Line,  
as run by me last May. Giving the connections  
with survey, lines & corners. - Sketching only the  
surveys where connections were made.

I did attach to my report a complete  
set of field notes, giving the course &  
distances of these connections.

Hope you will find this sketch satis-  
factory, so you can dispose of the matter

Yours very truly

Will Hickey

(Surveyor for Grio Co.)

RECEIVED

SEP 12 1934

REFERRED TO MAP

Grio Co. Bdry. Lms # 318

CERTIFICATE

State of Texas

County of Frio

I, A. C. Sweeney Clerk County Court of Frio County Texas hereby certify that the foregoing is a true and correct copy of Field of Notes of Survey of County Line between Frio and Atascosa Counties, Texas, as the same appears of record in Vol. 3, pages 164-165 of the Minutes of County Court of Frio County, Texas.

Given under my hand and seal of office this 18 day of June 1934

*A C Sweeney*

Clerk Co. Ct. Frio Co. Texas.

Frio Co. Bdry. Line # 318

No. 318  
Retrace of a Portion  
of

Frisco - Atascosa Co Line

Filed June 19 - 1934

J. H. Walker  
Comm.

C. F. Blucher  
clerk.

Clerk Co. of Frisco Co. Texas.

of Court of Frisco County, Texas.

of same appears of record in Vol. 3, pages 164-165 of the Minutes  
of Frisco County Line between Frisco and Atascosa Counties, Texas,

certify that the foregoing is a true and correct copy of Field of Notes

I, A. C. Sweeney Clerk County Court of Frisco County Texas hereby

County of Frisco

State of Texas

CERTIFICATE

Counter 53620

21  
C

3

3

Recd 6/19/34 B

The Surveyor appointed by the County of Atascosa, having failed to appear at the time and place designated, to assist in surveying fifteen miles of the County Line between Frio and Atascosa Counties:

I, Will Hickey, Surveyor for Frio County, proceeded alone and did the work, on which work I submit the following report.

For a beginning I located the County Line as run by W. W. Haynes in the year 1881, by taking a connection given by Mr. Fountain of Atascosa Co. in his field notes to the P. H. Claiborne Sur. No. 1336 1/2 surveyed by him in the year 1883.

I then ran South, retracing the old "Line" finding many old trees marked with four hacks and several fore & aft trees, also verifying the connection as given by Mr. Haynes, continued for Eight and half miles on this end of line finding evidence of the old line for the entire distance.

I then returned to the point on the N.E. line of the Claiborne Sur. No. 1336 1/2 and run "North" finding as before many old hacked trees and verifying the given connections.

The following pages give in detail my findings.

While I found that errors were made in some of the original distances, I found no material error in any of the important connections.

Beginning at the N.E. corner of Frio and S.E. corner of Medina County: A "B.J" 10" diam. brs N. 59 W. 10 vrs Marked C This is the same corner as set by Mess. Cobb and Haass in the year 1912, and also the corner as set by W.W. Haynes in the year 1881. Thence South: 236 vrs.

N.E. corner of the Mrs. E. Owings Survey; "Live Oak" S. 53 W. 12 vrs X at 1200 vrs. the S.E. corner of the Owings Survey on the North line

of the D. Wilkins Survey. at 1 mile set a post. At 1 mile 281 vrs center of Siestiadero Creek. At 2 miles set a post. At 2 miles 18 vrs. "Post Oak Creek " At 2 miles 1584 vrs "Live Oak Creek " At 3 miles set a post. At 3 miles 1400 vrs pass 3 vrs "East" of Ivey George House At 3 miles 1700 vrs pass about 40 vrs "West" of the N.E. corner of the J. Pointevent Survey No. 1379. At 4 miles set a post. At 4 miles 598 vrs. "Troutz Elm" At 5 miles set a post. At 6 miles set a post near the "North" corner of the Orelling Survey No. 1336. At 6 miles 378 vrs Padia Creek, at this point in the Creek the N.E. corner of Survey No. 3 G. C & S. F. brs N. 61 W. 225 vrs. At 7 miles set a post. At 7 miles 400 vrs intersect the S.W. line of the Orelling Survey and the N.E.

Frio Co Bdry Line 31 B

line of the P. H. Claiborne Survey No. 1336 $\frac{1}{2}$  at a point S. 60 $\frac{1}{2}$  E. 300  
vrs from the N.W. corner of the said P. H. Claiborne Survey. At 8 miles  
set a post. at 9 miles set a post: 15 vrs north of an old "fore & aft "  
Mesquit. At 9 miles 300 vrs intersect the N.W. line of the P.H. Claiborne  
Survey No. 1128 at a point S. 45 W. 246 vrs. from its North corner. At  
9 miles 475 vrs. the "County Line" divides the House now occupied by  
Buck Jones. At 9 miles 1847 vrs. prong of Lagunillas. At 10 miles set a  
post. At 10 miles 139 vrs. intersect the N.W. line of the Chas. Derbon  
Sur. No. 114 at a point S. 45 W. 528 vrs from its North corner. At 10  
miles 209 vrs prong of Lagunillas. At 10 miles 370 vrs Same prong. At  
10 miles 972 vrs same Creek. At 11 miles set a post. At 11 miles 340 vrs  
Slough. At 11 miles 424 vrs Lagunillas Creek. At 11 miles 900 vrs in-  
tersect the N.E. line of the J. H. Gibson Sur. No. 2 "about" 100 vrs S  
45 E. from its north corner. At 12 miles set a post. At 12 miles 1600  
vrs pass 20 vrs "West" of the South corner of J. H. Gibson Sur. No. 2  
At 13. miles set a post. At 14 miles set a post. At 14 miles 600 vrs.  
pass "about" 40 vrs. West of the "East" corner of the J. Pointevent Survey  
No. 1. At 14 miles 1782 vrs. Chilipitin Creek. At 15 miles set a post.

(End)

All post were marked same as the original post. Survey completed  
May 10, 1934.

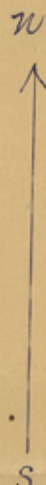
Will Hickey  
( Surveyor for Frio Co. )

Approved in open Court this the 15th day of June 1934 and ordered  
recorded in the Minutes of County Court and Certified Copy sent to  
Commissioner of General Land Office.

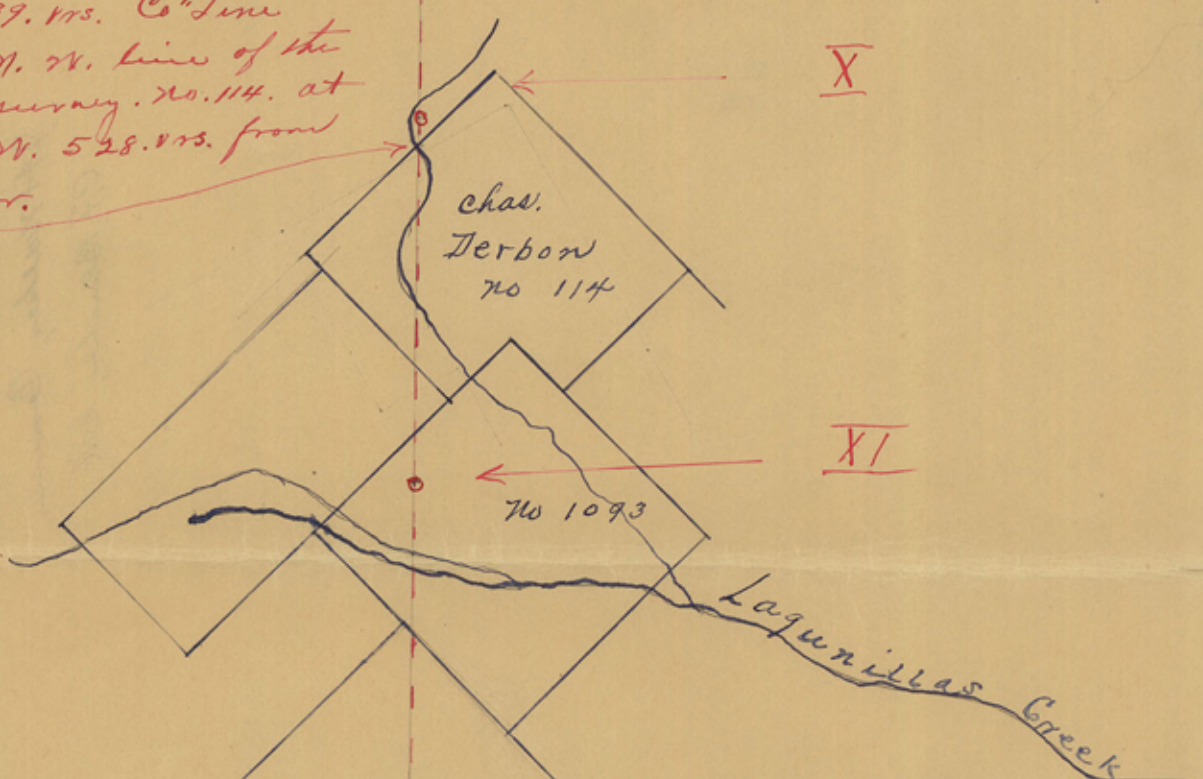
John L. Pranglin  
County Judge Frio Co. Texas.

Filed June 15, 1934. A. C. Sweeney County Clerk Frio Co. Texas.

Frio co. Edging Linc # 31 B



at 10 miles + 139. vrs. "Co" Line intersects the N. W. line of the Chas. Derbon survey no. 114. at a point S 45 W. 528. vrs. from the North corner.



X

XI

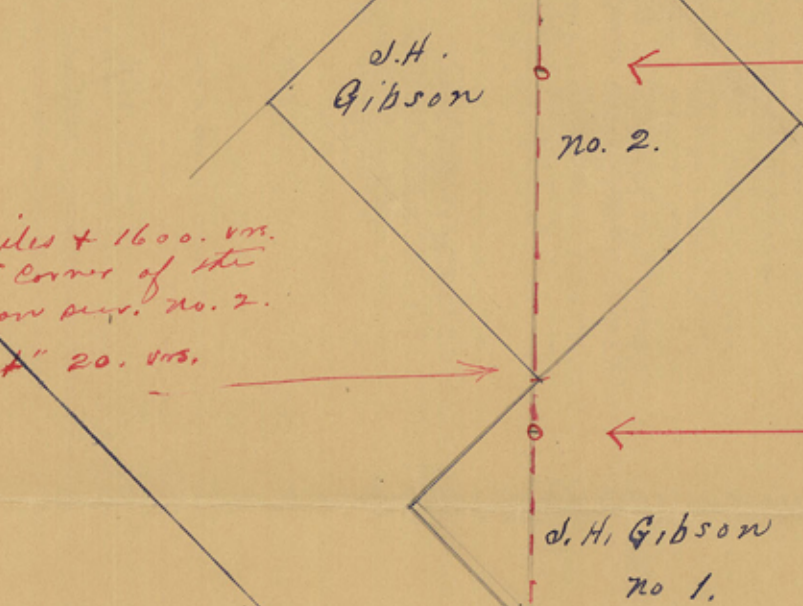
XII

XIII

XIV

XV

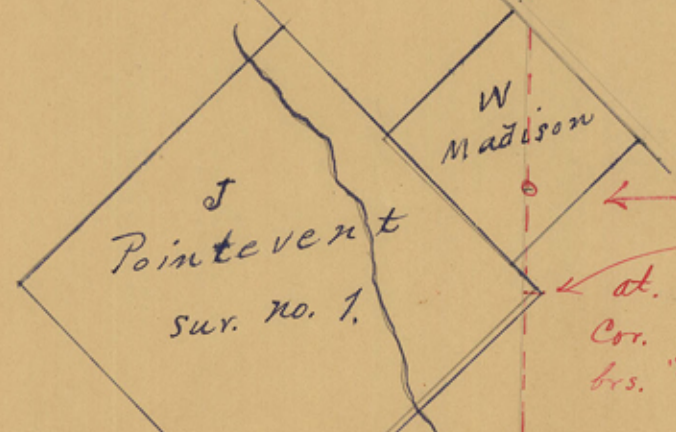
at 12 miles + 1600. vrs. the South Corner of the J. H. Gibson sur. no. 2. bears "East" 20. vrs.



J. H. Gibson no 1.

W Madison

at 14 miles + 600. vrs. the "East" Cor. of the J. Pointevent sur. no. 1. bears "East" 40. vrs.

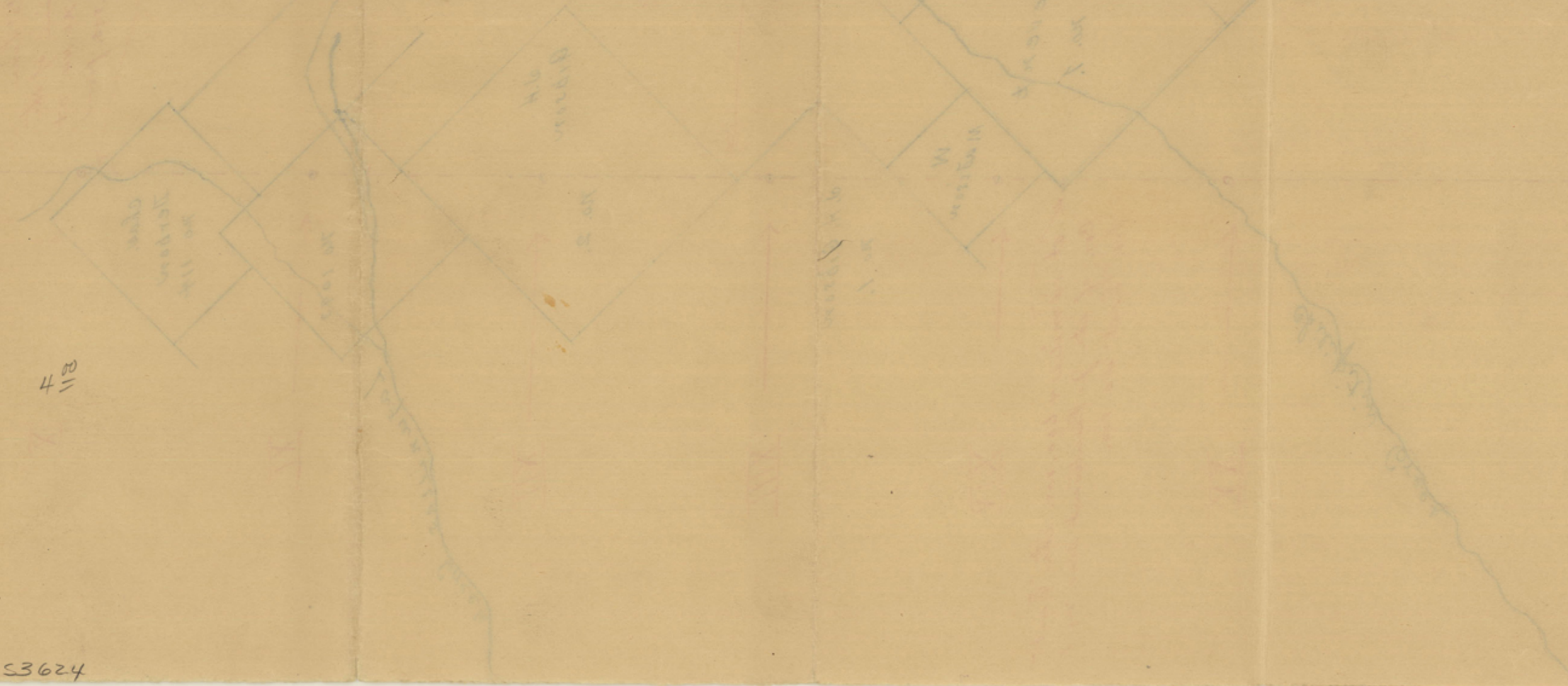


Chilipitins Creek

318  
Surveyor's Sketch (2)

Retrace of a Portion of  
Frio - Atascosa Co. Line

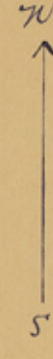
Filed Sept. 12th, 1934  
J.H. Walker, Comm.  
C.F. Blucher, Ck.



counter 53624

Frio Co. Survey Line # 318

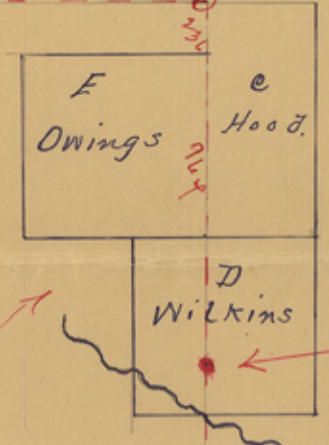




"Medina Co."

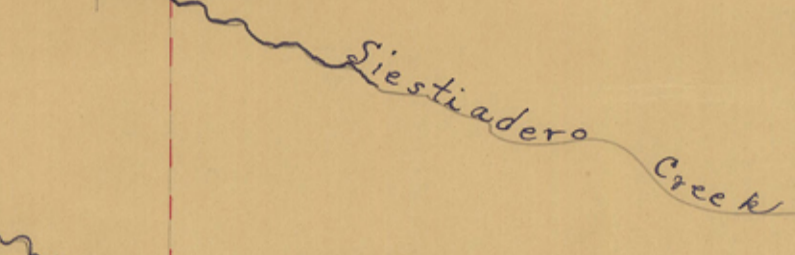
"Frio Co."

"Atascosa Co."

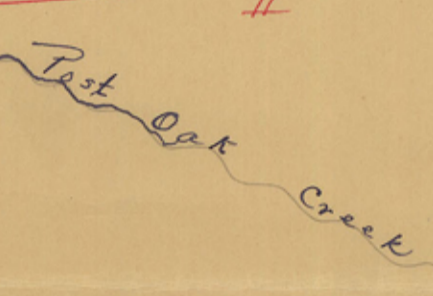


at 236 vrs. N.E. corner of E. Owings sur; at 1200. vrs. S.E. corner of same sur; at 1 mile 280. vrs. the Siesteadero creek.

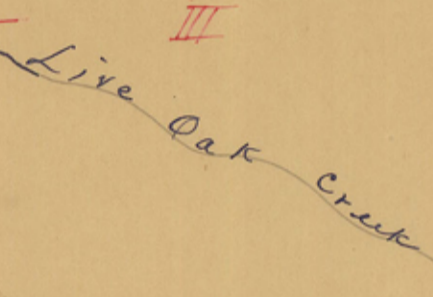
I Mile



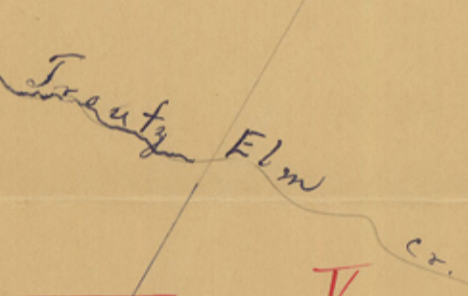
II



III



IV



V

J. Pointeont No 1381

G.C.&S.F. No. 3.

Padia Creek VI

at 6 miles 368. vrs. the N.E. corner of sur. No 2. G.C.&S.F. bear N. 61 1/2. 225. vrs.

F. Orelling No. 1336.

VII

at 7 miles 364 vrs. the "Co. Line" intersects the S.W. line of the Orelling survey and the N.E. line of the P.H. Claiborne sur. No. 1336 1/2 at a point S. 60 1/2 E. 300. vrs from the N.W. corner of the said Claiborne survey.

P.H. Claiborne No. 1336 1/2

VIII

H. Fabian

IX

The "Co. Line" intersects the N.W. line of the P.H. Claiborne sur. No. 1128. at a point S. 45 N. 246. vrs. from its North corner.

246. vrs.

P.H. Claiborne No. 1128.

X

Chas. Debon 114

Frio Co. Bdry. Line #318

Counter 53625