

Garza Co 3 Bdry. line (2)
**FIELDNOTES & SKETCH
OF
GARZA-KENT COUNTY LINE
BY A.L. HARRIS
RECEIVED AND FILED IN GENERAL
LAND OFFICE JANUARY 24, 1935**

*Court Decree with
Lynn-Garza Report*

*Revised and filed in General Land Office on January 24th, 1935
Platted on map Feb. 1936.*

— Abstracted 3-7-35. Vol. 57. —



LUBBOCK COUNTY

LUBBOCK, TEXAS

January 21st, 1935.

Hon. J.H. Walker, Commissioner GLO,
Austin, Texas.

Dear Sir:-

I am enclosing herewith my report of the survey of the Garza-Kent boundary line, which kindly file and notify me when your approval is completed.

After receiving your letter of Nov. 13th, relative to the North line of Scurry County, I was in Clairemont and went over what the records disclose about their old surveys, and it seems that Camp surveyed some lines for Kent about the time he did the lines for Scurry and that the Commissioner's court did not use them for the Land Office had sent them back for correction, then both Camp and B.C. Hardin were employed to either resurvey or make field notes acceptable to the land office, and these notes appear of record in Vol. 1 page 197 Commissioner's Court Minutes, Kent County; I have a copy of these field notes beginning at the NE corner of Scurry and west for the south line of Kent, I identified the SW corner of Kent as placed by them, and set the south end of the Garza-Kent line on the intersection with that line; this as you will note on the acreage division, gives Scurry County 453.5 acres of section 62, while the Assessor of Scurry county reports that he only assesses 269 acres in abstract 2386: this does not give the line its proper length, but if this Camp-Hardin line is the accepted line, then I went to it.

I was asking approval of the Scurry County Judge but he died suddenly, and do not know if they have another Judge yet or not; anyway this leaves them more land than they have had heretofore and that ought to satisfy them, to leave the line as marked.

Yours very truly,

A. L. Dornis

RECEIVED

JAN 24 1935

REFERRED TO MAP



LUBBOCK COUNTY

LUBBOCK, TEXAS

January 22nd, 1935.

Hon. J.H. Walker, Commissioner GLO,

Austin, Texas.

Dear Sir:-

When the Yoakum County Court approved my survey report of their North line, the question came up as to how to get the excess acreage allowable through a large number of sections in the northern part of Block D on the abstract records so that the county could benefit by assessing this excess, which is approximately 10 acres per section on 286 sections or a total of 2860 acres more than the original field notes reveal.

I would be glad to have you advise me what in your opinion is the best method of procedure in this matter, and I will then be glad to pass the information on to that Court.

Yours very truly,

A. L. Harris

RECEIVED

JAN 24 1935

REFERRED TO MAP



General Land Office

State of Texas

Austin

J. H. WALKER, COMMISSIONER
S. S. SAYERS, CHIEF CLERK

January 29, 1935

Mr. A. L. Harris, Surveyor
Lubbock, Texas

Dear Sir:

Your county line survey report for the line between Garza and Kent counties was received and filed in this department on January 24th.

I have examined these field notes and in general, they appear to be correct. I notice 2 clerical errors, as follows: at mile 25 the text calls for a concrete marker at plus 320 varas, while the map shows this distance as 220 varas; also, at mile 28 the text calls for a concrete market at plus 845 varas, while the map gives the distance as 725 varas; where correction is required, please authorize me to do what is necessary.

I do not find that the variation is given; while this may vary a little, of course, along the line, it is properly a part of your report, as required by law for all field notes. May I therefore, request that you give me the variation used at both ends of the line in running this boundary?

In view of the fact that there is nothing on file in this department showing a retrace of the Hardin and Camp North boundary line of Scurry county, I have nothing by which to check this connection between the Garza-Kent line and the Scurry county line. There is a little difference between the position given it by you and that shown on the official map. While it is true that this line as platted on the map, is only approximate, it is believed that the details of the connection with the Scurry county line should show; otherwise, Scurry county will have to be notified in order that they may check your work. For this reason, I would like for you to give me all the information which you can relative to the lower end of the Garza-Kent line.

If possible, I would like to have the distance in bearings to any of the Hardin-Camp county corners, as well as the angle of intersection between these 2 lines. Otherwise, I find this line correct, and as soon as I can get this additional information, your report will be ready to go to the abstract clerk.



General Land Office

State of Texas

Austin

J. H. WALKER, COMMISSIONER
S. S. SAYERS, CHIEF CLERK

-2-

In your letter of January 22nd you also refer to the matter of abstracting excess acreage in certain surveys along the North line of Yoakum county. There is no authority for correcting the acreage on the records of the Land Office, unless corrected field notes are submitted. If that is done, then the abstract can be corrected to conform, and the county assessor duly notified.

As you know, field notes may be filed here to show excess in a survey for the purpose of correcting acreage in the abstract, even tho such field notes would not be acceptable for a new patent in some cases.

Very truly yours,

Commissioner

Blucher:eb



W 370

LUBBOCK COUNTY
LUBBOCK, TEXAS

January 31st, 1935.

RECEIVED
FEB 4 1935
REFERRED TO [Signature]

Hon. J.H. Walker, Commissioner GLO

Austin, Texas.

Garza-Kent

Surveyor's Cert. of Correction

Dear Sir:-

In reply to yours of the 29th, inst, regarding the Garza-Kent boundary line survey, wishto report that in both instances the calls in miles 25 and 28 of report sent you, the text is correct, and the map incorrec ast o calls for concrete markers. Kindly change accordingly.

While I have needles in my Buff University Precise No. 1E transits they are practically worthless in this county due to the static electric ity caused by sand storms. On that line I began as noted in "Foreword" on transit line obtained by observation on the north star at elongation bearings read on wind mill towers several miles distance, and ran the line due south checking I believe twice from additional observations. I have house trailers equipped for cooking and sleeping quarters and so we stay right on the work and can check as the weather permits. I do not remember taking magnetic variation but it is around N9°E, a full degree less than 30 miles west up on the plains.

I will quote the last two miles of the Hardin-Camp survey of the Kent-Scurry line--22nd mile: From the 21st to the 22nd mile, West at 316 vs. East line of Sec. 62 Block 5, also the NW corner of sec. 41 Block 5- 763 south of said Ne and NW corners, at 1600 vs. Grape Creek and at 1900 vs. stone 3x30 inches marked Kent 22M (monument of stone around same) from which McKenza brs. N86°E, Mount Tate N63°E 2540 vs. 23rd Mile; From the 22nd mile to the south west corner of Kent County, West 316 vs. the East line of Sec. 63 Block 5, 713 vs. south of the NE corner, at 458 vs. the southwest corner of Kent county a flat stone 2x16x inches by 4½ feet, marked SW corner Kent Co.

This S_w corner stone is well identified being now ^{among} heavy mesquite trees and is 368.7 vs. due west of the corner as placed by me. By reputation these surveyors seem to liberal with calls and short on actual measurements, and you will notice they miscalled the distance north to the corner.

Yours very truly,

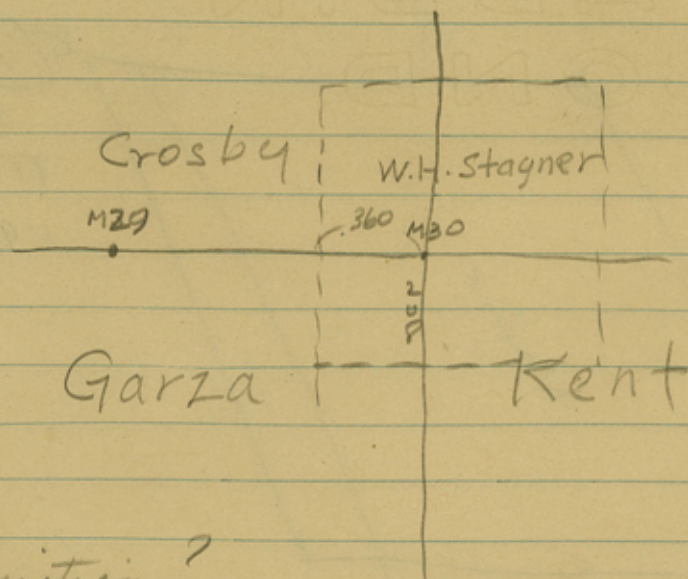
A. L. Harris

Received and filed in
General Land Office on
February 4th, 1935

J. H. Walker, Comm.
C. F. Blucher

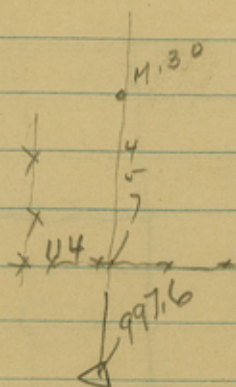
County 53684

A5

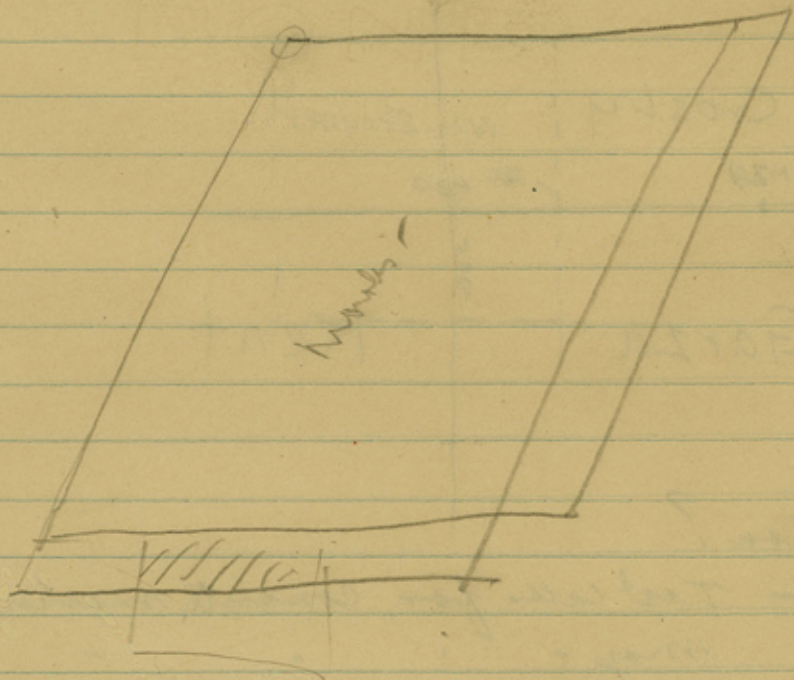
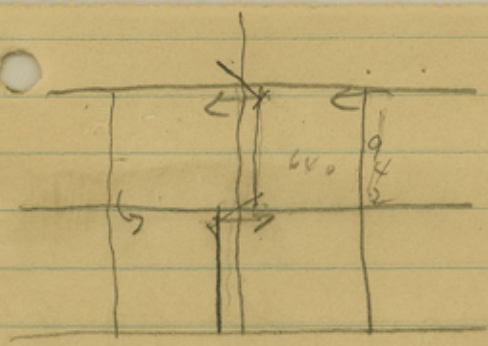


Variation?

at M25 - Test calls for concrete marker at +320 vs
 map " " " " +220 vs
 M28 - Test calls " " " at +845 vs
 map " " " " +725 vs



Explain how he determined position of
 N. line of survey as shown by Harding + Camp.



$$\begin{array}{r}
 8 \overline{) 1900} \\
 \underline{2375} \\
 1187.5 \\
 1198
 \end{array}$$

Nov. 11. 35.	1896	1900	14963
Nov. 12. 35.			
13. 35.			
25			
		153	

(27)

THE STATE OF TEXAS { In the County Court of GARZA
 *
COUNTY OF GARZA { County, Texas, Dec. Term, A.D. 1934.

In The Matter of Establishing the Garza and
Kent County Boundary Line.

This the 10th, day of December A.D. 1934, came on to
be considered the report, consistin of typewritten field notes
and blue ~~print map~~ print map of A.L. Farris, Surveyor, who heretofore
having been duly ~~employed~~ employed by said Counties to survey
and mark said boundary line, and the court having examined the
same, it is ordered by the court that said report be and is
hereby in all respects approved, and said report has been duly
filed for record in duplicate with the County Clerk of said
county.

W. L. Crow
County Judge Garza County, Tex.

The STATE OF TEXAS {
 *
COUNTY OF Garza { I, J. Lee Bowen, Clerk of the
County court of said county, do hereby certify that the above an
foregoing instrument in writing is a full, true and correct copy
of an order of the County Court of said County, approving the
report of A.L. Farris, Surveyor, in the matter of establishing
the true boundary line between Garza County and Kent
County: as same was filed for record the 10th, day of December
A.D. 1934, and recorded in Vol. 1 p 39 Minutes of County
Court of said county, and also remain on file in my office amon
the papers of said report.

Witness my hand and seal of office, in Post City Texas,
this the 10th, day of Dec. A.D. 1934.

J. Lee Bowen
Clerk County Court of
County, Texas. Garza
(seal)

THE STATE OF TEXAS
COUNTY OF Kent

I, W.T. Cathey, County Clerk of Kent

County, Texas, do hereby certify that the foregoing is a true correct copy of a typewritten and blue print map report of A.L. Harris, Surveyor, who was duly authorized to survey and mark the boundary line between Kent County and Garza County, together with its certificate of authentication, was filed for record in duplicate in my office this the 1st day of January A.D. 1935, and duly recorded the same day in Special County Line Volume No. 1 : one copy in the Clerk's Records and one copy in the Surveyors Records.

Witness my hand and the official seal, at my office in Clairemont Texas, this the 1st day of January A.D. 1935.

W.T. Cathey
County Clerk Kent County, Texas

Seal

18-1

Counter 53690

FOREWORD-

In Garza et al VS Lynn County et al, the Court set out that the North common corner of Garza and Kent Counties should be located at a point thirty miles easterly of the SE corner of Lubbock County as marked by J.B.Jones, and having been duly employed by both Garza and Crosby counties to survey their common line, I began at the said Jones corner and ran a line thirty miles easterly and placed a concrete marker in the W.H.Stagner survey at a point 360 varas East of its West line and 208 vs. north of its south line for the common corners of Crosby-Bickens-Garza and Kent Counties, and from this corner by observation on the polar star at elongation, I ran this line Due South as follows:

- 1 Beginning mile one at the above said common county corner, thence south at 208 cross the south line of said Stagner Survey, the north line of section 72 Block 2 at a point 579 vs. easterly of its NW corner, at 821.6 vs. cross fence, at 1855 fence line, in all 1901 vs, to the end of mile one.
- 2 Beginning mile two at the end of mile one, thence south at 254.4 vs fence line concrete marker set under fence, in the common line between sections 72 and 57 as marked, at 261 vs, fence line, at 1217.6 vs, fence line, in all 1901 vs, to the end of mile two.
- 3 Beginning mile three at the end of mile two, thence south at 61 vs, fence line, at 278 vs, fence line marking the boundary between sections 57 and 56, concrete marker set under fence line, located in blowed in sand and shinnery, at 1235.8 fence line, in all 1901 vs, to the end of mile three.
- 4 Beginning mile four at the end of mile three, thence south at 308 vs fence, marking the line between sections 56 and 41, concrete marker set in fence line, from county line west 73 vs fence line, 107 vs east bank of river bed, at 274 vs west bank of river bed, at 485 vs, 1½ inch iron pipe and stone marked NW 41, continueing south at 720 fence line on north bank of river bed, at 1210 vs south bank of river bed, at 1901 vs. the end of mile four, on an east-west high ridge.
- 5 Beginning mile five at the end of mile four, thence south at 116 vs cross deep ravine, at 333.5 vs, fence line marking the line between sections 39 and 41, 374.3 vs east of their west corner as marked, at 704 vs, concrete marker set on hill, at 1180 vs, ravine, at 1295 ravine, at 1615 ravine, in all 1901 vs, to the end of mile five.
- 6 Beginning mile six at the end of mile five, thence south at 334 vs the calculated line between sections 24 and 39, at 1285 vs fence line, at 1901 vs. the end of mile six.
- 7 Beginning mile seven at the end of mile six, thence south at 334 vs the calculated line between sections 18 and 24 at a point 231.5 vs east of their west corner, at 600 vs, set concrete marker, at 611 vs cross road, at 1000 vs down rocky hill, at 1299 vs fence line, at 1450 vs up rocky hill, at 1725 down rocky hill, in all 1901 vs to the end of mile seven.
- 8 Beginning mile eight at the end of mile seven, thence south at 100 vs cross road, at 660 road, at 700 vs set concrete marker, in all 1901 vs to the end of mile eight.
- 9 Beginning mile nine at the end of mile eight, thence south at 348 vs the line between sections 7 block 2 and 12 block 7, at a point 82.3 vs east of their west corner which is marked with iron pipe and stone and in high shinnery sage bush land, in all 1901 vs across sand-shinnery to the end of mile nine.

- 10 Beginning mile ten at the end of mile nine, thence south at 350 vs set concrete marker in section line, iron pipe and stone marked NE 22 bears west 32.7 vs, among mesquite trees, at 1528 vs, set sand stone about 10x15x30 inches on brow of hill overlooking river, stone marked Co. line on west side, from 1530 to 1650 down bluff, at 1812 vs. north bank of river bed, at 1901 vs end of mile ten in river bed.
- 11 Beginning mile eleven at the end of mile ten, thence south at 120 vs the south bank of river bed at 351 vs the section line between sections 35 and 22 at a point 18 vs west of their east corner as marked with iron pipe and stone, up slope 1901 vs, to the end of mile eleven.
- 12 Beginning mile twelve at the end of mile eleven, thence south at 353 vs line between sections 39 and 35, iron pipe and stone marked NE 39 is 69 vs east, at 430 ravine, 1330 ravine, in all 1901 vs to the end of mile twelve, in high mesquite in valley.
- 13 Beginning mile thirteen at the end of mile twelve, thence south at 353 vs the calculated line between sections 39 and 47 about 103 vs north of ravine, and in the breaks, at 1030 and 1471 vs cross ravines, in all 1901 vs, across very rough country, to the end of mile thirteen.
- 14 Beginning mile fourteen at the end of mile thirteen, thence south at 328 vs set concrete marker in north fence line of lane, at 339 vs line between sections 47 and 58 at a point 129.2 vs west of iron pipe and stone marked NE 58, at 350 fence line, in all 1901 vs up slope to the end of mile fourteen.
- 15 Beginning mile fifteen at the end of mile fourteen, thence south at 343.5 vs the line between sections 50 and 58 at a point 157.6 vs west of the SE corner of 58 and 53 vs west of the NE corner of section 50, as marked by iron pipe and stone, at 1827 vs cross fence, at 1901 vs the end of mile fifteen.
- 16 Beginning mile sixteen at the end of mile fifteen, thence south at 25 vs cross road, at 242.7 set B concrete marker under north fence line of highway, iron pipe marked 47-48-49 and 50 east 18.8 vs (this pipe has probably been moved northward from the center of highway) at 261.6 vs center line highway, about 10 vs west of the western end of the present pavement, at 272.4 vs the south fence line of highway, in all 1901 vs to the end of mile sixteen.
- 17 Beginning mile seventeen at the end of mile sixteen, thence south at 266.6 vs the calculated line between sections 33 and 48 at a point 55 vs east of their west corner, at about 650 vs down steep rocky hill, at about 1225 vs up rocky hill, at about 1700 vs down rocky hill and into river bottom, in all 1901 vs to end of mile seventeen.
- 18 Beginning mile eighteen at the end of mile seventeen, thence south at 271 vs east-west fence line, the calculated SW corner of section 33 is west 98.6 vs under fence line - no marker found - at 340 road, at 445 vs the calculated north line of R.A. Fox survey, at a point 229 vs east of its calculated NW corner, at 600 vs the north bank of river bed, at 1241 vs the south bank of river bed, at 1365 foot of cliff, at 1423 vs top of ledge rock south of river, at 1453 vs fence line, at 1395 the calculated line between the Fox and Holloway tracts at a point 225 vs east of their west calculated corner, stone mound under fence may be the corner as marked, in all 1901 vs to the end of mile eighteen, on hill.
- 19 Beginning mile nineteen at the end of mile eighteen, thence south at 10 vs rock ledge of steep drop, at 102 vs, road, at 174 vs, road, at 353.5 vs pass 221 vs east of iron pipe set at fence corner and marked NE74 B5, at 447.5 vs fence line marking the boundary between Callis and Holloway tracts, 221 vs east of iron pipe under north-south-east fence line presumably marking their west common corner, concrete marker set under fence, at 1080 vs ravine, at 1688 vs east-west fence line, at 1901 vs the end of mile nineteen.

- 20 Beginning mile twenty at the end of mile nineteen, thence south at 354 vs the south line of McGoethlin survey the north line of section 52, at 850 top hill, at 962 vs set concrete marker, at 1460 vs road, at 1901 vs the end of mile twenty.
- 21 Beginning mile twenty-one at the end of mile twenty, thence south at 300 vs, ravine, at 352 vs fence line, set concrete marker in fence line, iron pipe marked 52-53-72-73 under fence at north gate post is 204.8 vs west of county line, in all 1901 vs to the end of mile twenty-one.
- 22 Beginning mile twenty-two at the end of mile twenty-one, thence south at 352 vs the calculated line between sections 53 and 54, at 420 vs, gulch heading west about 100 vs, at 452 vs set concrete marker in cedar brakes, at 1475 concrete marker on top cap rock among cedars, at 1600 to 1750 vs down rock hill, in all 1901 vs, to the end of mile twenty-two, in valley.
- 23 Beginning mile twenty-three at the end of mile twenty-two, thence south 250 vs north bank of creek, at 352 vs the calculated line between sections 54 and 55, at 400 vs, the south bank of creek, at 777 to 887 vs up steep hill, 887 to 960 down rocky hill, at 1220 north bank of river bed, at 1680 vs the south bank of river bed, in all 1901 vs to the end of mile twenty-three, in a valley among large mesquite trees.
- 24 Beginning mile twenty-four at the end of mile twenty-three, thence south at 352 vs the calculated line between sections 55 and 56, at 880 vs, 1150, vs, 1445 vs, cross grape vine creek, at 1901 vs, the end of mile twenty-four, in valley among large mesquite trees.
- 25 Beginning mile twenty-five at the end of mile twenty-four, thence south at 320 vs concrete marker on east bank of ravine, at 323 vs, fence line, at 337 vs, pass 172.4 vs east of iron pipe, the west corner of sections 56 and 57 as marked, at 510 vs, foot of hill, at 558 top of stone ledge, 560 vs, to 958 vs, deep gorge, at 1875 vs, concrete marker in all 1901 vs, to the end of mile twenty-five.
- 26 Beginning mile twenty-six at the end of mile twenty-five, thence southdown hill to 337 vs, the calculated line between sections 57 and 58, at 1700 vs out of valley, in all 1901 vs, to the end of mile twenty-six.
- 27 Beginning mile twenty-seven at the end of mile twenty-six, thence south 324 vs set concrete marker, at 325 vs, fence line, iron pipe at fence corner bears west 157 vs, marked 58-59-66 and 67, at 462 vs down stone bluff, at 950 to 12 50 vs in bottom of grape vine creek, at 1870 vs cross stone hog-back bears N45°W, at 1901 vs, the end of mile twenty-seven in canyon, at foot of bluff to the west.
- 28 Beginning mile twenty-eight at the end of mile twenty-seven, thence south at 325 vs fence line marking the line between sections 59 and 60, section corner is west 149 vs under fence, iron pipe marker, at 450 up hill, 600 vs, down hill, at 820 vs, road, at 845 vs, concrete marker, at 1500 vs down hill, at 1660 vs, ravine, at 1901 vs, the end of mile.
- 29 Beginning mile twenty-nine at the end of mile twenty-eight thence south at 325 the calculated line between sections 60 and 61, at 985 vs ravine, 1110 and 1420 vs, ravines, at 1665 vs pass 139 vs east of fence corner, in all 1901 vs, to the end of mile twenty-nine.
- 30 Beginning mile thirty at the end of mile twenty-nine, thence south 444 vs, pass 138 vs east of set stone probably the west corner of sections 61 and 62, at 457 vs fence line intersected by fence from the north 114 vs west of county line, concrete marker set in fence line, at 997.6 vs A concrete county conner in the north line of Scurry County as marked for Kent county by surveyors Hardin and Camp, and recorded in Kent county.

GARZA-KENT BOUNDARY LINE REPORT

ACREAGE DIVISION

Sec.	Blk	Cert.	File	T.Ac	Garza County Abst. Ac.	Kent County Abst. Ad
W.H.Stagner			P-9466	160	13.3 (Crosby county 1230 45.5)	23.3 Dickens Co. 1047 77.9)
72	H&GNRY 2	9/1859	56849	699.8	192.5	1289 507.3
57	2	9/1852	S-5740	699.8	173.8	435 526.
56	2	9/1852	56830	699.8	164.8	1268 535.
41	2	9/1844	S-5732	699.8	147.44	24 552.4
39	2	9/1843	S-5731	699.8	114.8	25 585.
24	2	9/1835	56833	700	90.5	1270 609.5
18	2	10/2108	57409	692	65.5	1272 626.5
7	2	10/2103	S-5752	691.43	80.27	135 651.16
12	7	12/2440	F67578	640	17.	1259 623.
21	7	12/2445	S-6223	640	1.	148 639.
22	7	12/2445	11279	640	1070 632.	518 8.
35	7	12/2452	S-6230	640	814 630.5	142 9.5
39	7	11/2333	S-6111	640	813 519.5	125 20.5
47	7	11/2337	S-6115	640	812 604	124 36.
58	7	11/2342	59249	640	979 592	1314 48.
50	2	30/269A	59308	599	986 589.	10.
48	2	30/268	58882	554.4	978 7.6	1317 546.8
33	2	30/261R	S-7091	652.2	820 24.2	337 628.
R.A.Fox			P*9316	160	1216 38.	1049 122
A.J.Holloway			P-8407	158.4	795 37.4	990 121.
Henry Callis				56.2	41	15.2
J.T.McHothlin				160	28.5	131.5
52	5	6/1025	57923	640	1193 70	1214 570
53	5	6/1026	S-6067	640	809 67.5	119 572.5
54	5	6/1026	59299	640	989 65	1331 575
55	5	6/1027	S-6068	640	810 62	120 578
56	5	6/1027	9891	640	802 59.5	466 580.5
57	5	6/1028	S-6069	640	811 56.5	121 583.5
58	5	6/1028	9888	640	53.5	468 586.5

GARZA - KENT BOUNDARY LINE REPORT

ACREAGE DIVISION

#2

Sec.	Blk.	Cert.	File	T.Ac	Garza county Abst. Ac.	Kent county Abst Ac.
59	5	6/1029	S-6070	640	51;5	122 588.5
60	5	6/1029	9892	640	49	467 591
61	5	6/1030	S-6071	640	47	123 593
62	5	6/1030	61337	640	13.5	1381 173
					Scurry County	
					2386	453.5

I, A. L. Harris, Licensed State Land Surveyor of Lubbock County, Texas, do hereby certify that the foregoing described survey was actually made by me on the ground, according to law, on the dates of Oct. 15th, to Nov. 10th, 1934, with the chain carriers aforesaid, duly qualified and that all the lines, corners, boundaries and marks of the same, whether artificial or natural, are truly and correctly described and set forth in the foregoing plat and field notes of this report, including four typewritten pages and this sheet, and a blue print map approximately ten feet long.

T. H. Thomas, Jack Medley

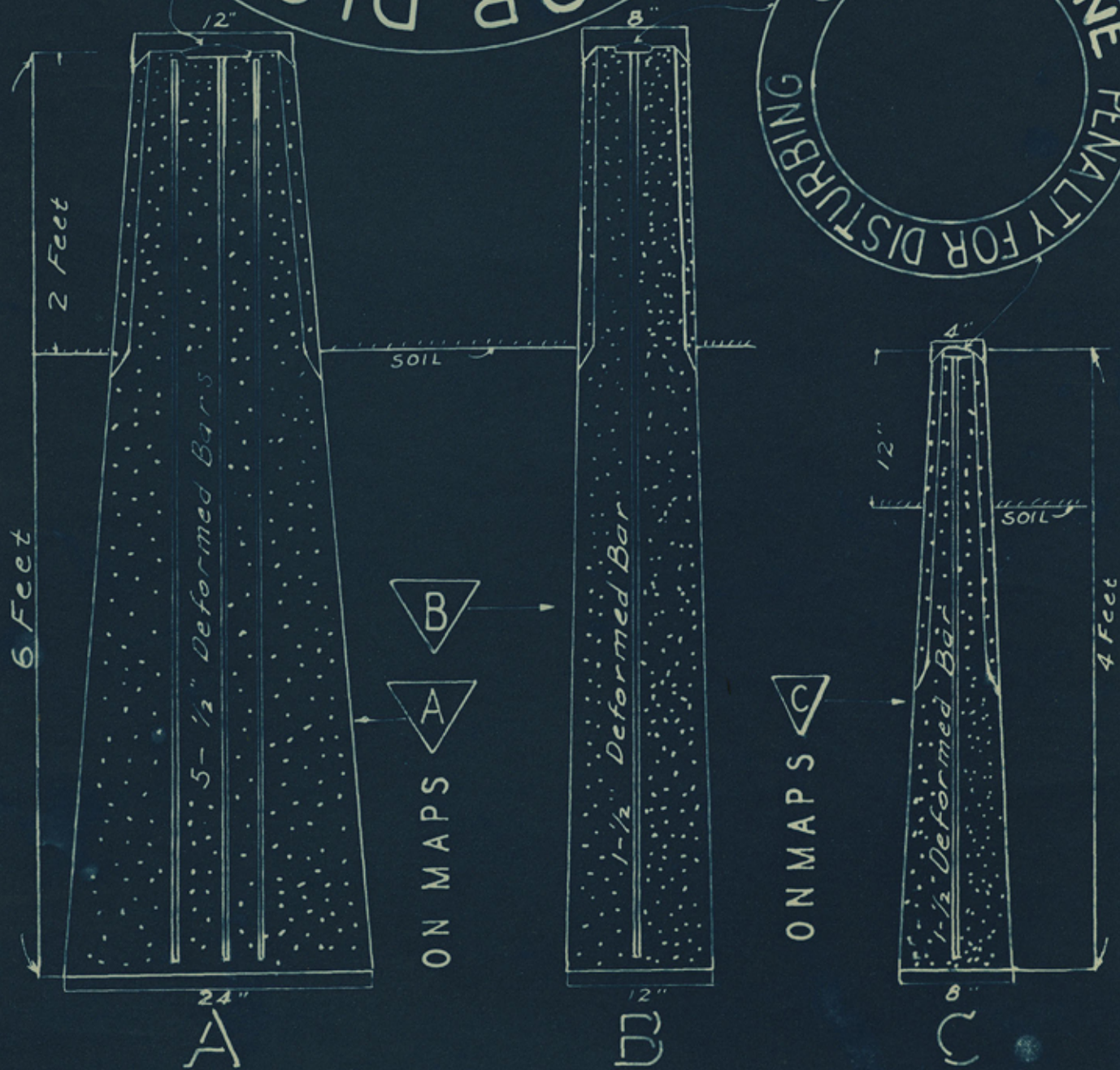
Chain Carriers.

A. L. Harris

Licensed State Land Surveyor.

Received and filed in General Land Office on Jan 24, 1935.

J. H. Walker, Comm.
C. F. Blucher, clk.



CONCRETE COUNTY LINE MARKERS

- A. FOR COUNTY CORNERS, NAMES TO BE SHOWN ON CAP
 - B. AT STATE HIGHWAY CROSSINGS
 - C. MILE END-COUNTY NAMES AND MILE NUMBER SHOWN
- CAPS ACTUAL SIZE
 CONCRETE MIX 1-2-3

A14



A. L. HARRIS
 LUBBOCK, TEXAS
 9-28-33

