

N<sup>o</sup> 33

Boundary line between  
the County of  
Goliad  
De Witt  
~~De Witt~~

③

---

Filed April 3<sup>rd</sup> 1885

---

---



State of Texas  
County of Goliad

May 17<sup>th</sup> 1884 Commenced to run the County line between the Counties of Goliad and De Witt and Goliad and Karns, By order of the County Commissioners Court, — Beginning at the 15 Mile Calletto Creek, at a point between 2 live Oaks one of them about 30 in in diam<sup>r</sup> Marked D.W. Br<sup>s</sup> S 16 1/2° W 5 Vrs, The other is dead and Br<sup>s</sup> N 16 1/2° E 5 Vrs, These trees stand on the South bank of the creek, and Br<sup>s</sup> from the Creek S 51° W 100 Vrs, Thence S 51° W at 1060 Vrs. the S.E. Cor<sup>r</sup> of the Ragdale Survey, at 1901 Vrs, a post and mound, Thence a L.O. 36 in in Diam<sup>r</sup> Mk<sup>d</sup> A Br<sup>s</sup> N 13 1/2° W 45 Vrs, at 3802 Vrs. a post & mound Thence a post Oak Mk<sup>d</sup> B Br<sup>s</sup> S 51° W 158 Vrs, at 4600 Vrs, the S.E. line of the Jose Santos Survey, at 5412 Vrs cross horseier Creek, at 5703 Vrs a post & mound, Thence a L.O. Mk<sup>d</sup> C, Br<sup>s</sup> S 85° W 27 Vrs, at 6830 cross the Jose Santos S. W. line. at 7614 Vrs a post & mound, Thence a p.o. Mk<sup>d</sup> D Br<sup>s</sup> N 59° E 11 Vrs, Another p.o. Mk<sup>d</sup> E Br<sup>s</sup> S 62° W 19 1/2 Vrs, at 9271 Vrs the N.E. Cor<sup>r</sup> of the Henry Peace Survey, at 9505 Vrs, a post and mound, Thence a p.o. Mk<sup>d</sup> F Br<sup>s</sup> S 20° W 14 Vrs, at 10305 Vrs the 15 Mile Calletto Creek, at 10396 Vrs the South line of the Gaudolupo College Survey. at 11406 a post & mound Thence a L.O. 20 in in Diam<sup>r</sup>. Mk<sup>d</sup> G Br<sup>s</sup> S 39 1/4° W 12 1/4 Vrs, at 12577 the N.E. line of the W.S. Hughes Survey at 13307 Vrs a post & mound, Thence a p.o. Mk<sup>d</sup> H Br<sup>s</sup> N 80° E 8 1/2 Vrs, at 15122 Vrs the Man-

Goliad Co Bdry Line 33  
R



1 nahuilla creek, at 15208 1/2 Vs. a post & mound  
2 Whence a L.O. 16 in diam. Mk. II Br. S 82 1/2 W  
3 102 1/2 Vs. at 17109 1/2 Vs. a post & mound Whence  
4 a L.O. Mk. II Br. S 31 E 27 1/4 Vs. at 17429  
5 Vs. Buck Creek, at 19010 1/2 Vs. a post & mound.  
6 Whence a L.O. Mk. J. Br. N 78 1/2 E 34 Vs. at  
7 20911 1/2 Vs. a post & mound. Whence a Musquit Mk. K  
8 Br. S 33 E 65 1/2 Vs. at 22081 Vs. Elm Creek,  
9 at 22812 1/2 Vs. a post & mound. Whence a Musquit  
10 Mk. L Br. S 23 E 38 Vs. at 24713 1/2 Vs. a  
11 post & mound. Whence a Musquit Mk. M. Br.  
12 S 51 W 32 1/2 Vs. at 25100 the Cabaza Creek,  
13 at 26614 1/2 Vs. a post & mound Whence a Musquit Mk.  
14 N Br. N 30 W 90 Vs. at 28172 1/2 Vs. the old  
15 Cor. of Dewitt & Kasno Counties Made by  
16 Smith & Bernard in A.D. 1848 at 28862  
17 Vs. Cross the Goliad & Helena road, at 30416  
18 Vs. a post & mound. Whence a Musquit Mk. P  
19 Br. N 83 1/2 W 268 Vs. at 31668 a Musquit  
20 Mk. K & G. J Br. S 20 E 9 1/2 Vs. at 32317 1/2 Vs.  
21 a post & mound Whence a Musquit Mk. Q Br.  
22 S 53 W 122 Vs. at 33357 1/2 Vs. Chicken Branch,  
23 at 34218 1/2 Vs. a post & mound. Whence a Musquit  
24 Mk. R Br. N 65 E 67 1/2 Vs. at 34835 Vs. a  
25 stake on the Bank of the San Antonio River,  
26 at 36119 Vs. a post & mound Whence a Musquit  
27 Mk. S Br. N 16 1/2 W 62 Vs. at 37699 Vs.  
28 Cross the old Mier and La Bichea road, at  
29 38020 Vs. a post & mound. Whence a L.O. 40 in in  
30 diam. Mk. II Br. S 5 W 35 Vs. at 38248 1/2 Vs.  
31 a L.O. Mk. K & G. at 39921 Vs. a post & mound  
32 in the open prairie, at 44822 1/2 Vs. a post & mound

Goliad Co Bdry Line #33

R  
County 53799



1 Whence a Musquit Mk<sup>o</sup>. V Brs<sup>o</sup> N63°W 207 1/2"  
2 at 42662 1/2 Vbs Salt Branch, At 43723 1/2 Vbs  
3 a post & Mound the intersection of the Navarette  
4 grant - At 45624 1/2 Vbs a post & Mound. Whence  
5 a L.O. Mk<sup>o</sup>. X Brs<sup>o</sup> S18 3/4° E 46 Vbs, at 47244  
6 Lords Peak, at 47525 Vbs, a post & mound. Whence  
7 a Musquit <sup>Mk<sup>o</sup></sup> Y Brs<sup>o</sup> N66°W 69 Vbs, at 48375 Vbs,  
8 Cross the S.W. line of the Navarette Grant, and  
9 at 49426 Vbs. a post & Mound, Whence a Musquit  
10 Mk<sup>o</sup>. Z Brs<sup>o</sup> N10° E 25 Vbs, at 51327 Vbs a post  
11 & Mound Whence a Musquit Mk<sup>o</sup>. K Brs<sup>o</sup> S70°W 75 Vbs  
12 at 53228 Vbs. a post & Mound. Whence a Musquit Mk<sup>o</sup>.  
13 X Brs<sup>o</sup> N30°W 35 Vbs, at 53328 Vbs a Musquit post  
14 5 feet long and 8 inches in diameter. Set in the  
15 Blanco Creek, down deep into the clay, from which  
16 a L.O. Mk<sup>o</sup>. G. Brs<sup>o</sup> S82°W 52 3/4 Vbs, Another L.O. Mk<sup>o</sup>.  
17 K Brs<sup>o</sup> N79°W. 64 Vbs, Another Mk<sup>o</sup>. C. O. C. 50 in  
18 in diam, Brs<sup>o</sup> S58° E 87 Vbs, Another Mk<sup>o</sup>. W. J. S.  
19 20 in in diam, Brs<sup>o</sup> S35° E 77 Vbs.

20 Done Friday May 23<sup>d</sup> A.D. 1884.

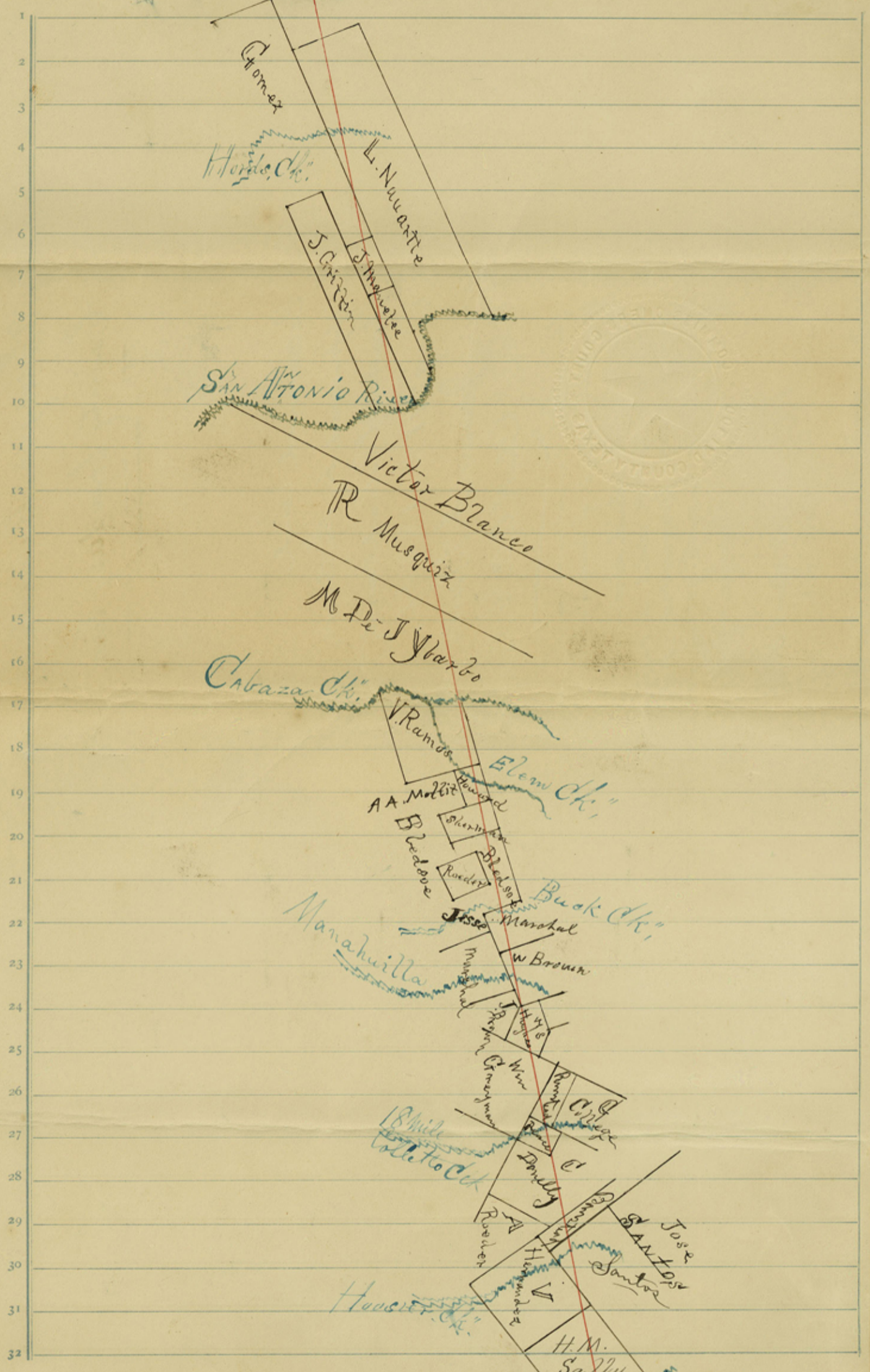
21 J. A. Flowers 3 Chain, C. O. Carstens Co, Surveyor  
22 J. Y. Bailey 3 Men, Goliad, Co, Tex.

23  
24 F. W. Haratt 3 Flag,  
25 R. G. Seal 3 Men,

26  
27 J. C. Carstens County Surveyor do Certify under my  
28 Oath of Office that the foregoing plat & field notes  
29 are correct and done according to law. And the Mts &  
30 bounds and Marks Natural & artificial are truly made  
31 and described above given at my Office this  
32 11<sup>th</sup> day of August A.D. 1884 -

J. C. Carstens  
Co. Surveyor





GoLand Co. Cdry. Line # 33

R<sup>3</sup>  
County 53801



33 / Golead & De Witt

3

Surveyor's Report  
County boundary line.

Examined and  
Approved by the Comd.  
Court of Golead County  
Aug. 11<sup>th</sup> 1884,  
James A. Burke  
Clark C. & G. Co.

The within corresponds with  
former report of Surveyor De  
Witt Co upon which abstract  
was corrected and a cer-  
tified copy forwarded the  
Comptroller March 3<sup>rd</sup> 1885  
Apr. 9<sup>th</sup> 1885. Beaumont.

Filed April 3<sup>rd</sup> 85  
D. N. Robinson  
Chf Clerk.

County 53802

R<sup>4</sup>